

POLICY STATEMENT

Section 26.1, 26.23 Objectives/Policy Statement

Franklin County, owner of Preston Airport has established a Disadvantaged Business Enterprise (DBE) Program in accordance with regulations of the U.S. Department of Transportation (DOT), 49 CFR Part 26. Franklin County has received Federal financial assistance from the Department of Transportation, and as a condition of receiving this assistance, Franklin County has signed an assurance that it will comply with 49 CFR Part 26.

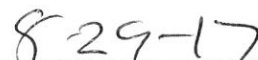
It is the policy of Franklin County to ensure that DBEs as defined in Part 26, have an equal opportunity to receive and participate in DOT-assisted contracts. It is also our policy:

1. To ensure nondiscrimination in the award and administration of DOT- assisted contracts;
2. To create a level playing field on which DBEs can compete fairly for DOT-assisted contracts;
3. To ensure that the DBE Program is narrowly tailored in accordance with applicable law;
4. To ensure that only firms that fully meet 49 CFR Part 26 eligibility standards are permitted to participate as DBEs;
5. To help remove barriers to the participation of DBEs in DOT assisted contracts;
6. To promote the use of DBEs in all types of federally-assisted contracts and procurement activities;
7. To assist the development of firms that can compete successfully in the market place outside the DBE Program; and
8. To provide appropriate flexibility to recipients of Federal financial assistance in establishing and providing opportunities for DBEs.

Shauna T. Geddes has been delegated as the DBE Liaison Officer. In that capacity, Shauna T. Geddes, County Clerk, is responsible for implementing all aspects of the DBE program. Implementation of the DBE program is accorded the same priority as compliance with all other legal obligations incurred by Franklin County in its financial assistance agreements with the Department of Transportation.

Franklin County has disseminated this policy statement to the County Commissioners as well as the Airport Advisory Board and all of the components of our organization. We have distributed this statement to DBE and non-DBE business communities that perform work for us on DOT-assisted contracts. The distribution was accomplished by hard mail, email and telephone/fax.


[Signature of Recipient's Chief Executive Officer]


Date

SUBPART A – GENERAL REQUIREMENTS

Section 26.1 Objectives

The objectives are found in the policy statement on the first page of this program.

Section 26.3 Applicability

Franklin County is the recipient of Federal airport funds authorized by 49 U.S.C. 47101, *et seq.*

Section 26.5 Definitions

Franklin County will use terms in this program that have the meaning defined in Section 26.5.

Section 26.7 Non-discrimination Requirements

Franklin County will never exclude any person from participation in, deny any person the benefits of, or otherwise discriminate against anyone in connection with the award and performance of any contract covered by 49 CFR Part 26 on the basis of race, color, sex, or national origin.

In administering its DBE program, Franklin County will not, directly or through contractual or other arrangements, use criteria or methods of administration that have the effect of defeating or substantially impairing accomplishment of the objectives of the DBE program with respect to individuals of a particular race, color, sex, or national origin.

Section 26.11 Record Keeping Requirements

Reporting to DOT: 26.11

(b) You must continue to provide data about your DBE Program to the Department as directed by DOT operating administrations.

We will report DBE participation to DOT/FAA as follows:

We will transmit to FAA annually on December 1, the "Uniform Report of DBE Awards or Commitments and Payments" form, found in Appendix B to this part. We will also report the DBE contractor firm information either on the FAA DBE Contractor's Form or other similar format. We will begin using the revised Uniform Report of DBE Awards or Commitments and Payments for reporting FY 2017 reports due December 1, 2017 via the dbE-Connect system.

Bidders List: 26.11(c)

Franklin County will create and maintain a bidders list. The purpose of the list is to provide as accurate data as possible about the universe of DBE and non-DBE contractors and subcontractors who seek to work on our DOT-assisted contracts for use in helping to set our overall goals. The bidders list will include the name, address, DBE and non-DBE status, age of firm, and annual gross receipts of firms.

We will collect this information in the following ways: Local contractors found by census information, Idaho DBE directory, past contractors from previous projects at the airport through survey. See Attachment 3 in Appendices for Bidder's List.

Section 26.13 Federal Financial Assistance Agreement

Franklin County has signed the following assurances, applicable to all DOT-assisted contracts and their administration:

Assurance: 26.13(a) - Each financial assistance agreement Franklin County signs with a DOT operating administration (or a primary recipient) will include the following assurance:

Franklin County shall not discriminate on the basis of race, color, national origin, or sex in the award and performance of any DOT-assisted contract or in the administration of its DBE program or the requirements of 49 CFR part 26. Franklin County shall take all necessary and reasonable steps under 49 CFR part 26 to ensure nondiscrimination in the award and administration of DOT-assisted contracts. Franklin County's DBE program, as required by 49 CFR part 26 and as approved by DOT, is incorporated by reference in this agreement. Implementation of this program is a legal obligation and failure to carry out its terms shall be treated as a violation of this agreement. Upon notification to Franklin County of its failure to carry out its approved program, the Department may impose sanctions as provided for under 49 CFR part 26 and may, in appropriate cases, refer the matter for enforcement under 18 U.S.C. 1001 and/or the Program Fraud Civil Remedies Act of 1986 (31 U.S.C. 3801 *et seq.*).

Contract Assurance: 26.13b – Franklin County will ensure that the following clause is included in each contract we sign with a contractor and each subcontract the prime contractor signs with a subcontractor:

The contractor, sub recipient or subcontractor shall not discriminate on the basis of race, color, national origin, or sex in the performance of this contract. The contractor shall carry out applicable requirements of 49 CFR part 26 in the award and administration of DOT-assisted contracts. Failure by the contractor to carry out these requirements is a material breach of this contract, which may result in the termination of this contract or such other remedy as Franklin County deems appropriate, which may include, but is not limited to: (1) Withholding monthly progress payments; (2) Assessing sanctions; (3) Liquidated damages; and/or (4) Disqualifying the contractor from future bidding as non-responsible.

SUBPART B - ADMINISTRATIVE REQUIREMENTS

Section 26.21 DBE Program Updates

Franklin County is required to have a DBE program meeting the requirements of this part as it will receive grants for airport planning or development and will award prime contracts, cumulative total value of which exceeds \$250,000 in FAA funds in a federal fiscal year. We are not eligible to receive DOT financial assistance unless DOT has approved our DBE program and we are in compliance with it and this part. We will continue to carry out our program until all funds from DOT financial assistance have been expended. We do not have to submit regular updates of our program, as long as we remain in compliance. However, we will submit significant changes in the program for approval.

Section 26.23 Policy Statement

The Policy Statement is elaborated on the first page of this DBE Program.

Section 26.25 DBE Liaison Officer (DBELO)

We have designated the following individual as our DBE Liaison Officer:

Shauna T. Geddes
County Clerk
Franklin County
39 West Oneida
Preston, ID 83263
208-852-1090
stgeddes@plmw.com

In that capacity, the DBELO is responsible for implementing all aspects of the DBE program and ensuring that Franklin County complies with all provision of 49 CFR Part 26. The DBELO has direct, independent access to the Chairman of the Board of County Commissioners concerning DBE program matters. An organization chart displaying the DBELO's position in the organization is found in Attachment 2 to this program.

The DBELO is responsible for developing, implementing and monitoring the DBE program, in coordination with other appropriate officials. The DBELO has a staff of 3 to assist in the administration of the program. The duties and responsibilities include the following:

1. Gathers and reports statistical data and other information as required by DOT.
2. Reviews third party contracts and purchase requisitions for compliance with this program.
3. Works with all departments to set overall annual goals.
4. Ensures that bid notices and requests for proposals are available to DBEs in a timely manner.

5. Identifies contracts and procurements so that DBE goals are included in solicitations (both race-neutral methods and contract specific goals) and monitors results.
6. Analyzes Franklin County's progress toward attainment and identifies ways to improve progress.
7. Participates in pre-bid meetings.
8. Advises the CEO\governing body on DBE matters and achievement.
9. Chairs the DBE Advisory Committee.
10. Determine contractor compliance with good faith efforts.
11. Provides DBEs with information and assistance in preparing bids, obtaining bonding and insurance.
12. Plans and participates in DBE training seminars.
13. Acts as liaison to the Uniform Certification Process.
14. Provides outreach to DBEs and community organizations to advise them of opportunities.
15. Maintains the agency's updated directory on certified DBEs.

Section 26.27 DBE Financial Institutions

It is the policy of Franklin County to investigate the full extent of services offered by financial institutions owned and controlled by socially and economically disadvantaged individuals in the community, to make reasonable efforts to use these institutions, and to encourage prime contractors on DOT-assisted contracts to make use of these institutions. In Idaho, the only financial institution to assist DBEs is the Small Business Administration. There are none owned or controlled by DBEs. Franklin County will investigate annually to see if more become available.

Section 26.29 Prompt Payment Mechanisms

Franklin County has established, as part of its DBE Program, a contract clause to require prime contractors to pay subcontractors for satisfactory performance of their contracts no later than 30 days from receipt of each payment you make to the prime contractor.

We will ensure prompt and full payment of retainage from the prime contractor to the subcontractor within 30 days after the subcontractor's work is satisfactorily completed. We will use one of the following methods to comply with this requirement:

- (3) Hold retainage from prime contractors and provide for prompt and regular incremental acceptances of portions of the prime contract, pay retainage to prime contractors based on these acceptances, and require a contract clause obligating the prime contractor to pay all retainage owed to the subcontractor for satisfactory completion of the accepted work within 30 days after your payment to the prime contractor.

Franklin County will consider a subcontractor's work is satisfactorily completed when all the tasks called for in the subcontract have been accomplished and documented as required by Franklin County. When Franklin County has made an incremental acceptance of a portion of a prime contract, the work of a subcontractor covered by that acceptance is deemed to be satisfactorily completed.

Franklin County will provide appropriate means to enforce the requirements of this section. These means include:

Franklin County will include the following clause in each DOT-assisted prime contract:

The prime contractor agrees to pay each subcontractor under this prime contract for satisfactory performance of its contract no later than 20 days from the receipt of each payment the prime contractor receives from Franklin County. The prime contractor agrees further to return retainage payments to each subcontractor within 20 days after the subcontractors work is satisfactorily completed. Any delay or postponement of payment from the above referenced timeframe may occur only for good cause following written approval of Franklin County. This clause applies to both DBE and non-DBE subcontractors.

Franklin County has also established, as part of our DBE program, the following mechanisms to ensure prompt payment:

- (1) A contract clause that requires prime contractors to include in their subcontracts language providing that prime contractors and subcontractors will use appropriate alternative dispute resolution mechanisms to resolve payment disputes. You may specify the nature of such mechanisms.
- (2) A contract clause providing that the prime contractor will not be reimbursed for work performed by subcontractors unless and until the prime contractor ensures that the subcontractors are promptly paid for the work they have performed.
- (3) Other mechanisms, consistent with this part and applicable state and local law, to ensure that DBEs and other contractors are fully and promptly paid.

Monitoring Payments to DBEs

We will require prime contractors to maintain records and documents of payments to DBEs for three years following the performance of the contract. These records will be made available for inspection upon request by any authorized representative of Franklin County or DOT. This reporting requirement also extends to any certified DBE subcontractor.

We will perform interim audits of contract payments to DBEs. The audit will review payments to DBE subcontractors to ensure that the actual amount paid to DBE subcontractors equals or exceeds the dollar amounts stated in the schedule of DBE participation.

Section 26.31 Directory

Franklin County uses the State of Idaho DBE directory, maintained by the State.

The directory lists the firm's name, address, phone number, and the type of work the firm has been certified to perform as a DBE. In addition, the directory lists each type of work for which a firm is eligible to be certified by using the most specific NAICS code available to describe each type of work.

The Idaho UCP revises the Directory annually. We make the Directory available as follows: Idaho Transportation Department, 3311 W. State Street - P.O. Box 7129 Boise, ID 83707-1129 - (208) 334-8000. The Directory may be found at <https://itd.dbesystem.com/>.

Section 26.33 Over-concentration

Franklin County has not identified that over-concentration exists in the types of work that DBEs perform.

Section 26.35 Business Development Programs

Franklin County has not established a business development program.

Section 26.37 Monitoring and Enforcement Mechanisms

Franklin County will take the following monitoring and enforcement mechanisms to ensure compliance with 49 CFR Part 26.

1. We will bring to the attention of the Department of Transportation any false, fraudulent, or dishonest conduct in connection with the program, so that DOT can take the steps (e.g., referral to the Department of Justice for criminal prosecution, referral to the DOT Inspector General, action under suspension and debarment or Program Fraud and Civil Penalties rules) provided in 26.107.
2. We will implement similar action under our own legal authorities, including responsibility determinations in future contracts. Attachment 1 lists the regulation, provisions, and contract remedies available to us in the events of non-compliance with the DBE regulation by a participant in our DBE Program.
3. We will implement a monitoring and enforcement mechanism to ensure that work committed to DBEs at contract award or subsequently (i.e., as the result of modification to the contract) is actually performed by the DBEs to which the work was committed.
4. We will implement a monitoring and enforcement mechanism that will include written certification that we have reviewed contracting records and monitored work sites for this purpose. This will be accomplished when monitoring contract performance at the time of close-out review.
5. We will implement a mechanism that will provide for a running tally of actual DBE attainments (e.g., payment actually made to DBE firms), including a means of comparing these attainments to commitments. In our reports of DBE participation to DOT, we will show both commitments and attainments, as required by the DOT uniform reporting form.

Section 26.39 Fostering small business participation.

Franklin County has created a Small Business element to structure contracting requirements to facilitate competition by small business concerns, taking all reasonable steps to eliminate obstacles to their participation, including unnecessary and unjustified bundling of contract requirements that may preclude small business participation in procurements as prime contractors or subcontractors.

Franklin County's small business element is incorporated as Attachment 10 to this DBE Program. We will actively implement the program elements to foster small business participation; doing so is a requirement of good faith implementation of our DBE program.

SUBPART C – GOALS, GOOD FAITH EFFORTS, AND COUNTING

Section 26.43 Set-asides or Quotas

Franklin County does not use quotas in any way in the administration of this DBE program.

Section 26.45 Overall Goals

Franklin County will establish an overall DBE goal covering a three-year federal fiscal year period if we anticipate awarding DOT/FAA funded prime contracts the cumulative total value of which exceeds \$250,000 during any one or more of the reporting fiscal years within the three-year goal period. In accordance with Section 26.45(f) Franklin County will submit its Overall Three-year DBE Goal to FAA by August 1st as required by the established schedule below.

Airport Type	Region	Date Due (Goal Period)	Next Goal Due (Goal Period)
Non-Primary (GAs, Relievers and State DOTs)	New England, Northwest Mountain, & Southern	August 1, 2014 (2015/2016/2017)	August 1, 2017 (2018/2019/2020)

The DBE goals will be established in accordance with the 2-step process as specified in 49 CFR Part 26.45. If Franklin County does not anticipate awarding DOT/FAA funded prime contracts the cumulative total value of which exceeds \$250,000 during any of the years within the three-year reporting period, we will not develop an overall goal; however, this DBE Program will remain in effect and Franklin County will seek to fulfill the objectives outlined in 49 CFR Part 26.1.

(c) Step 1. The first step is to determine the relative availability of DBEs in the market area, "base figure". We will use Idaho State DBE Directory and Census Bureau Data, as well as a Bidder's List as a method to determine our base figure. The second step is to adjust the "base figure" percentage from Step 1 so that it reflects as accurately as possible the DBE participation the recipient would expect in the absence of

discrimination based on past participation, a disparity study and/or information about barriers to entry to past competitiveness of DBEs on Contracts.

If we use a bidders list, we will do the following: Determine the number of DBEs that have bid or quoted (successful and unsuccessful) on your DOT-assisted prime contracts or subcontracts in the past three years. Determine the number of all businesses that have bid or quoted (successful and unsuccessful) on prime or subcontracts in the same time period. Divide the number of DBE bidders and quoters by the number of all businesses to derive a base figure for the relative availability of DBEs in your market. When using this approach, we will establish a mechanism (documented in our goal submission) to directly capture data on DBE and non-DBE prime and subcontractors that submitted bids or quotes on our DOT-assisted contracts.

Any methodology we choose will be based on demonstrable evidence of local market conditions and be designed to ultimately attain a goal that is rationally related to the relative availability of DBEs in our market. We understand that the exclusive use of a list of prequalified contractors or plan holders, or a bidders list that does not comply with the requirements of paragraph (c)(2) of this section (above), is not an acceptable alternative means of determining the availability of DBEs.

(d) Step 2. Once we have calculated a base figure, we will examine all of the evidence available in our jurisdiction to determine what adjustment, if any, is needed to the base figure to arrive at our overall goal. If the evidence does not suggest an adjustment is necessary, then no adjustment shall be made.

26.45 (g)(1) In establishing the overall goal, Franklin County will provide for consultation and publication. This includes consultation with minority, women's and general contractor groups, community organizations, and other officials or organizations which could be expected to have information concerning the availability of disadvantaged and non-disadvantaged businesses, the effects of discrimination on opportunities for DBEs, and Franklin County's efforts to establish a level playing field for the participation of DBEs. The consultation will include a scheduled, direct, interactive exchange (e.g., a face-to-face meeting, video conference, teleconference) with as many interested stakeholders as possible focused on obtaining information relevant to Franklin County's goal setting process, and it will occur before we are required to submit our goal methodology to the operating administration for review pursuant to paragraph (f) of this section. We will document in our goal submission the consultation process that we engaged in. Notwithstanding paragraph (f)(4) of this section, we will not implement our proposed goal until we have complied with this requirement.

In addition, Franklin County will publish a notice announcing our proposed overall goal before submission to the operating administration on August 1st. The notice will be posted on our official internet web site and may be posted in any other sources (e.g., minority-focused media, trade association publications). If the proposed goal changes following review by the operating administration, the revised goal will be posted on our official internet web site. We will inform the public that the proposed overall goal and its rationale are available for inspection during normal business hours at our principal office and that Franklin County and

DOT/FAA will accept comments on the goals for 30 days from the date of the notice. Notice of the comment period will include the addresses to which comments may be sent (including offices and websites) where the proposal may be reviewed. **The public comment period will not extend the August 1st deadline.**

Our Overall Three-Year DBE Goal submission to DOT/FAA will include a summary of information and comments received, if any, during this public participation process and our responses.

We will begin using our overall goal on October 1 of the reporting period, unless we have received other instructions from DOT.

Section 26.45 (e) - Project Goals

If we establish a goal on a project basis, we will begin using our goal by the time of the first solicitation for a DOT-assisted contract for the project.

Section 26.45(f) - Prior Operating Administration Concurrent

Franklin County understands that we are not required to obtain prior operating administration concurrence with our overall goal. However, if the operating administration's review suggests that our overall goal has not been correctly calculated or that our method for calculating goals is inadequate, the operating administration may, after consulting with us, adjust our overall goal or require that we do so. The adjusted overall goal is binding. In evaluating the adequacy or soundness of the methodology used to derive the overall goal, the U.S. DOT operating administration will be guided by the goal setting principles and best practices identified by the Department in guidance issued pursuant to § 26.9.

A description of the methodology to calculate the overall goal and the goal calculations can be found in Attachment 5 to this program.

Section 26.47 Failure to meet overall goals.

Franklin County will maintain an approved DBE Program and overall DBE goal, if applicable as well as administer our DBE Program in good faith to be considered to be in compliance with this part.

If Franklin County awards and commitments shown on our Uniform Report of Awards or Commitments and Payments at the end of any fiscal year are less than the overall goal applicable to that fiscal year, we will do the following in order to be regarded by the Department as implementing your DBE Program in good faith:

- (1) Analyze in detail the reasons for the difference between the overall goal and our awards and commitments in that fiscal year;
- (2) Establish specific steps and milestones to correct the problems we have identified in our analysis and to enable us to meet fully your goal for the new fiscal year;

(3) Franklin County will prepare, within 90 days of the end of the fiscal year, the analysis and corrective actions developed under paragraph (c)(1) and (2) of this section. We will retain copy of analysis and corrective actions in records for a minimum of three years, and will make it available to FAA upon request.

Section 26.49 (e) How are overall goals established for transit vehicle manufacturers?

There are, nor will there be, any transit vehicles uses or purchases.

Section 26.51(a-c) Breakout of Estimated Race-Neutral & Race-Conscious Participation

(a) Franklin County will meet the maximum feasible portion of its overall goal by using race-neutral means of facilitating race-neutral DBE participation. Race-neutral DBE participation includes any time a DBE wins a prime contract through customary competitive procurement procedures or is awarded a subcontract on a prime contract that does not carry a DBE contract goal.

Race-neutral means include, but are not limited to the following:

- (1) Arranging solicitations, times for the presentation of bids, quantities, specifications, and delivery schedules in ways that facilitate participation by DBEs and other small businesses and by making contracts more accessible to small businesses, by means such as those provided under §26.39 of this part.
- (2) Providing assistance in overcoming limitations such as inability to obtain bonding or financing (e.g., by such means as simplifying the bonding process, reducing bonding requirements, eliminating the impact of surety costs from bids, and providing services to help DBEs, and other small businesses, obtain bonding and financing);
- (3) Providing technical assistance and other services;
- (4) Carrying out information and communications programs on contracting procedures and specific contract opportunities (e.g., ensuring the inclusion of DBEs, and other small businesses, on recipient mailing lists for bidders; ensuring the dissemination to bidders on prime contracts of lists of potential subcontractors; provision of information in languages other than English, where appropriate);
- (5) Implementing a supportive services program to develop and improve immediate and long-term business management, record keeping, and financial and accounting capability for DBEs and other small businesses;

- (6) Providing services to help DBEs, and other small businesses, improve long-term development, increase opportunities to participate in a variety of kinds of work, handle increasingly significant projects, and achieve eventual self-sufficiency;
- (7) Establishing a program to assist new, start-up firms, particularly in fields in which DBE participation has historically been low;
- (8) Ensuring distribution of your DBE directory, through print and electronic means, to the widest feasible universe of potential prime contractors; and
- (9) Assisting DBEs, and other small businesses, to develop their capability to utilize emerging technology and conduct business through electronic media.

The breakout of estimated race-neutral and race-conscious participation can be found in Attachment 6 to this program.

Franklin County does not intend to use any race-conscious means of obtaining DBE participation other than contract goals, if possible. To date, we have not used race conscious means as they have not been available in the area.

Section 26.51(d-g) Contract Goals

Franklin County will arrange solicitations, times for the presentation of bids, quantities, specifications, and delivery schedules in ways that facilitate participation by DBEs and other small businesses and by making contracts more accessible to small businesses, by means such as those provided under § 26.39.

If our approved projection under paragraph (c) of this section estimates that we can meet our entire overall goal for a given year through race-neutral means, we will implement our program without setting contract goals during that year, unless it becomes necessary in order meet our overall goal.

We will establish contract goals only on those DOT-assisted contracts that have subcontracting possibilities. We need not establish a contract goal on every such contract, and the size of contract goals will be adapted to the circumstances of each such contract (e.g., type and location of work, availability of DBEs to perform the particular type of work).

We will express our contract goals as a percentage of the total amount of a DOT-assisted contract by race neutral means.

Section 26.53 Good Faith Efforts Procedures

Demonstration of good faith efforts (26.53(a) & (c))

The obligation of the bidder/offeror is to make good faith efforts. The bidder/offeror can demonstrate that it has done so either by meeting the contract goal or documenting good faith efforts. Examples of good faith efforts are found in Appendix A to Part 26.

Shauna Geddes, County Clerk, 39 West Oneida, Preston, ID 83263, 208-852-1090, stgeddes@plmw.com, is responsible for determining whether a bidder/offeror who has not met the contract goal has documented sufficient good faith efforts to be regarded as Responsive.

We will ensure that all information is complete and accurate and adequately documents the bidder/offeror's good faith efforts before we commit to the performance of the contract by the bidder/offeror.

Information to be submitted (26.53(b))

In our solicitations for DOT/FAA-assisted contracts for which a contract goal has been established, we will require the following:

- (1) Award of the contract will be conditioned on meeting the requirements of this section;
- (2) All bidders or offerors will be required to submit the following information to the recipient, at the time provided in paragraph (b)(3) of this section:
 - (i) The names and addresses of DBE firms that will participate in the contract;
 - (ii) A description of the work that each DBE will perform. To count toward meeting a goal, each DBE firm must be certified in a NAICS code applicable to the kind of work the firm would perform on the contract;
 - (iii) The dollar amount of the participation of each DBE firm participating;
 - (iv) Written documentation of the bidder/offeror's commitment to use a DBE subcontractor whose participation it submits to meet a contract goal; and
 - (v) Written confirmation from each listed DBE firm that it is participating in the contract in the kind and amount of work provided in the prime contractor's commitment.
 - (vi) If the contract goal is not met, evidence of good faith efforts (see Appendix A of this part). The documentation of good faith efforts must include copies of each DBE and non-DBE subcontractor quote submitted to the bidder when a non-DBE subcontractor was selected over a DBE for work on the contract; and
- (3) We will require that the bidder/offeror present the information required by paragraph (b)(2) of this section:

Under sealed bid procedures, as a matter of responsiveness, or with initial proposals, under contract negotiation procedures;

- (4) Provided that, in a negotiated procurement, including a design-build procurement, the bidder/offeror may make a contractually binding commitment to meet the goal at the time of bid submission or the presentation of initial proposals but provide the information required by paragraph (b)(2) of this section before the final selection for the contract is made by the recipient.

Administrative reconsideration (26.53(d))

Within seven (7) business of being informed by Franklin County that it is not responsive because it has not documented sufficient good faith efforts, a bidder/offeror may request administrative reconsideration. Bidder/offerors should make this request in writing to the following reconsideration official: Vic A. Pearson, Franklin County Prosecuting Attorney, 39 West Oneida, Preston, ID 83263, 208-852-9119, vicp@fcidaho.us. The reconsideration official will not have played any role in the original determination that the bidder/offeror did not document sufficient good faith efforts.

As part of this reconsideration, the bidder/offeror will have the opportunity to provide written documentation or argument concerning the issue of whether it met the goal or made adequate good faith efforts to do so. The bidder/offeror will have the opportunity to meet in person with our reconsideration official to discuss the issue of whether it met the goal or made adequate good faith efforts to do. We will send the bidder/offeror a written decision on reconsideration, explaining the basis for finding that the bidder did or did not meet the goal or make adequate good faith efforts to do so. The result of the reconsideration process is not administratively appealable to the Department of Transportation.

Good Faith Efforts procedures in situations when there are contract goals (26.53(f)(g))

We will include in each prime contract a provision stating:

The contractor shall utilize the specific DBEs listed to perform the work and supply the materials for which each is listed unless the contractor obtains your written consent as provided in this paragraph 26.53(f); and

That, unless our consent is provided under this paragraph 26.53(f), the contractor shall not be entitled to any payment for work or material unless it is performed or supplied by the listed DBE.

We will require the contractor that is awarded the contract to make available upon request a copy of all DBE subcontracts. The subcontractor shall ensure that all subcontracts or an agreement with DBEs to supply labor or materials require that the subcontract and all lower tier subcontractors be performed in accordance with this part's provisions.

In this situation, we will require the prime contractor to obtain our prior approval of the substitute DBE and to provide copies of new or amended subcontracts, or documentation of good faith efforts.

We will require that a prime contractor not terminate a DBE subcontractor listed in response to paragraph (b)(2) of this section (or an approved substitute DBE firm) without our prior written consent. This includes, but not limited to, instances in which a prime contractor seeks to perform work originally designated for a DBE subcontractor with its own forces or those of an affiliate, a non-DBE firm, or with another DBE firm.

We will provide such written consent only if we agree, for reasons stated in our concurrence document, that the prime contractor has good cause to terminate the DBE firm. For purposes of this paragraph, good cause includes the following circumstances:

- (1) The listed DBE subcontractor fails or refuses to execute a written contract;
- (2) The listed DBE subcontractor fails or refuses to perform the work of its subcontract in a way consistent with normal industry standards. Provided however, that good cause does not exist if the failure or refusal of the DBE subcontractor to perform its work on the subcontract results from the bad faith or discriminatory action of the prime contractor;
- (3) The listed DBE subcontractor fails or refuses to meet the prime contractor's reasonable, non-discriminatory bond requirements.
- (4) The listed DBE subcontractor becomes bankrupt, insolvent, or exhibits credit unworthiness;
- (5) The listed DBE subcontractor is ineligible to work on public works projects because of suspension and debarment proceedings pursuant to 2 CFR Parts 180, 215 and 1,200 or applicable state law;
- (6) We have determined that the listed DBE subcontractor is not a responsible contractor;
- (7) The listed DBE subcontractor voluntarily withdraws from the project and provides to us written notice of its withdrawal;
- (8) The listed DBE is ineligible to receive DBE credit for the type of work required;
- (9) A DBE owner dies or becomes disabled with the result that the listed DBE contractor is unable to complete its work on the contract;
- (10) Other documented good cause that we have determined compels the termination of the DBE subcontractor. Provided, that good cause does not exist if the prime contractor seeks to terminate a DBE it relied upon to obtain the contract so that the prime contractor can self-perform the work for which the DBE contractor was engaged or so that the prime contractor can substitute another DBE or non-DBE contractor after contract award.

Before transmitting to us its request to terminate and/or substitute a DBE subcontractor, the prime contractor must give notice in writing to the DBE subcontractor, with a copy to us, of its intent to request to terminate and/or substitute, and the reason for the request.

The prime contractor must give the DBE five days to respond to the prime contractor's notice and advise us and the contractor of the reasons, if any, why it objects to the proposed termination of its subcontract and why we should not approve the prime contractor's action. If required in a particular case as a matter of public necessity (*e.g.*, safety), we may provide a response period shorter than five days.

In addition to post-award terminations, the provisions of this section apply to pre-award deletions of or substitutions for DBE firms put forward by offerors in negotiated procurements.

Franklin County will require a contractor to make good faith efforts to replace a DBE that is terminated or has otherwise failed to complete its work on a contract with another certified

DBE. These good faith efforts shall be directed at finding another DBE to perform at least the same amount of work under the contract as the DBE that was terminated, to the extent needed to meet the contract goal that we established for the procurement. The good faith efforts shall be documented by the contractor. If we request documentation from the contractor under this provision, the contractor shall submit the documentation to us within 7 days, which may be extended for an additional 7 days if necessary at the request of the contractor, and the recipient shall provide a written determination to the contractor stating whether or not good faith efforts have been demonstrated.

We will include in each prime contract the contract clause required by § 26.13(b) stating that failure by the contractor to carry out the requirements of this part is a material breach of the contract and may result in the termination of the contract or such other remedies set forth in that section that we deem appropriate if the prime contractor fails to comply with the requirements of this section.

If the contractor fails or refuses to comply in the time specified, our contracting office will issue an order stopping all or part of payment/work until satisfactory action has been taken. If the contractor still fails to comply, the contracting officer may issue a termination for default proceeding.

Sample Bid Specification:

The requirements of 49 CFR Part 26, Regulations of the U.S. Department of Transportation, apply to this contract. It is the policy of Franklin County to practice nondiscrimination based on race, color, sex, or national origin in the award or performance of this contract. All firms qualifying under this solicitation are encouraged to submit bids/proposals. Award of this contract will be conditioned upon satisfying the requirements of this bid specification. These requirements apply to all bidders/offers, including those who qualify as a DBE. A DBE contract goal of 0.13 percent as determined in the goal calculation Attachment 5 has been established for this contract. The bidder/offeror shall make good faith efforts, as defined in Appendix A, 49 CFR Part 26 (attachment 1), to meet the contract goal for DBE participation in the performance of this contract.

The bidder/offeror will be required to submit the following information: (1) the names and addresses of DBE firms that will participate in the contract; (2) a description of the work that each DBE firm will perform. To count toward meeting a goal, each DBE firm must be certified in a NAICS code applicable to the kind of work the firm would perform on the contract; (3) the dollar amount of the participation of each DBE firm participating; (4) Written documentation of the bidder/offeror's commitment to use a DBE subcontractor whose participation it submits to meet the contract goal; and (5) Written confirmation from each listed DBE firm that it is participating in the contract in the kind and amount of work provided in the prime contractor's commitment; (6) if the contract goal is not met, evidence of good faith efforts.

Section 26.55 Counting DBE Participation

We will count DBE participation toward overall and contract goals as provided in 49 CFR 26.55. We will not count the participation of a DBE subcontract toward a contractor's final compliance with its DBE obligations on a contract until the amount being counted has actually been paid to the DBE.

If the firm is not currently certified as a DBE in accordance with the standards of subpart D of this part at the time of the execution of the contract, we will not count the firm's participation toward any DBE goals, except as provided for in 26.87(j).

SUBPART D – CERTIFICATION STANDARDS

Section 26.61 – 26.73 Certification Process

Franklin County will use the certification standards of Subpart D of Part 26 to determine the eligibility of firms to participate as DBEs in DOT-assisted contracts. To be certified as a DBE, a firm must meet all certification eligibility standards. We will make our certification decisions based on the facts as a whole.

For information about the certification process or to apply for certification, firms should contact:

Idaho Transportation Department DBE Program
3311 W. State Street
PO Box 7129
Boise, ID 83707-1129
(208) 334-8000
<https://itd/dbesystem.com/?TN=itd>

Our certification application forms and documentation requirements are found in Attachment 8 to this program.

SUBPART E – CERTIFICATION PROCEDURES

Section 26.81 Unified Certification Programs

Franklin County is the member of a Unified Certification Program (UCP) administered by the State of Idaho. The UCP will meet all of the requirements of this section. See Attachment 9.

SUBPART F – COMPLIANCE AND ENFORCEMENT

Section 26.109 Information, Confidentiality, Cooperation and intimidation or retaliation

We will safeguard from disclosure to third parties information that may reasonably be regarded as confidential business information, consistent with Federal, state, and local law.

Notwithstanding any provision of Federal or state law, we will not release any information that may reasonably be construed as confidential business information to any third party without the written consent of the firm that submitted the information. This includes applications for DBE certification and supporting information. However, we will transmit this information to DOT in any certification appeal proceeding under § 26.89 of this part or to any other state to which the individual's firm has applied for certification under § 26.85 of this part.

All participants in the Department's DBE program (including, but not limited to, recipients, DBE firms and applicants for DBE certification, complainants and appellants, and contractors using DBE firms to meet contract goals) are required to cooperate fully and promptly with DOT and recipient compliance reviews, certification reviews, investigations, and other requests for information. Failure to do so shall be a ground for appropriate action against the party involved (e.g., with respect to recipients, a finding of noncompliance; with respect to DBE firms, denial of certification or removal of eligibility and/or suspension and debarment; with respect to a complainant or appellant, dismissal of the complaint or appeal; with respect to a contractor which uses DBE firms to meet goals, findings of non-responsibility for future contracts and/or suspension and debarment).

Franklin County, contractor, or any other participant in the program will not intimidate, threaten, coerce, or discriminate against any individual or firm for the purpose of interfering with any right or privilege secured by this part or because the individual or firm has made a complaint, testified, assisted, or participated in any manner in an investigation, proceeding, or hearing under this part. If we violate this prohibition, we are in noncompliance with this part.

ATTACHMENTS

- Attachment 1 Regulations: 49 CFR Part 26 or website link
- Attachment 2 Organizational Chart
- Attachment 3 Bidder's List Collection Form
- Attachment 4 DBE Directory or link to DBE Directory
- Attachment 5 Overall Goal Calculations
- Attachment 6 Demonstration of Good Faith Efforts or Good Faith Effort Plan - Forms 1 & 2
- Attachment 7 DBE Monitoring and Enforcement Mechanisms
- Attachment 8 DBE Certification Application Form
- Attachment 9 State's UCP Agreement
- Attachment 10 Small Business Element Program

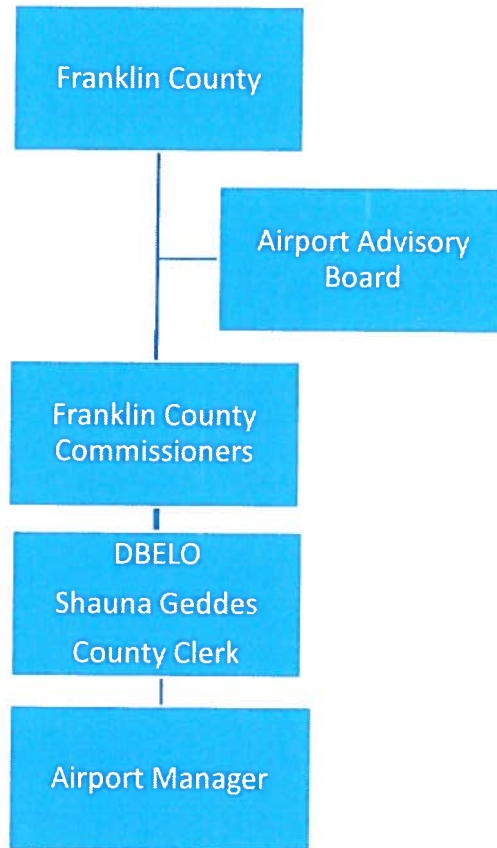
ATTACHMENT 1

Regulations: 49 CFR Part 26, or link to website

https://www.ecfr.gov/cgi-bin/text-idx?tpl=/ecfrbrowse/Title49/49cfr26_main_02.tpl

ATTACHMENT 2

Organizational Chart



ATTACHMENT 3
Bidder's List Collection Form

(SAMPLE BIDDERS LIST COLLECTION FORM)

Firm Name	Firm Address/ Phone #	DBE or Non-DBE Status (verify via State's UCP Directory)	Age of Firm	Annual Gross Receipts
			<input type="checkbox"/> Less than 1 year <input type="checkbox"/> 1- 3 years <input type="checkbox"/> 4-7 years <input type="checkbox"/> 8-10 years <input type="checkbox"/> More than 10 years	<input type="checkbox"/> Less than \$500K <input type="checkbox"/> \$500K - \$1 million <input type="checkbox"/> \$1-2 million <input type="checkbox"/> \$2-5 million <input type="checkbox"/> Greater than \$5 million
			<input type="checkbox"/> Less than 1 year <input type="checkbox"/> 1- 3 years <input type="checkbox"/> 4-7 years <input type="checkbox"/> 8-10 years <input type="checkbox"/> More than 10 years	<input type="checkbox"/> Less than \$500K <input type="checkbox"/> \$500K - \$1 million <input type="checkbox"/> \$1-2 million <input type="checkbox"/> \$2-5 million <input type="checkbox"/> Greater than \$5 million
			<input type="checkbox"/> Less than 1 year <input type="checkbox"/> 1- 3 years <input type="checkbox"/> 4-7 years <input type="checkbox"/> 8-10 years <input type="checkbox"/> More than 10 years	<input type="checkbox"/> Less than \$500K <input type="checkbox"/> \$500K - \$1 million <input type="checkbox"/> \$1-2 million <input type="checkbox"/> \$2-5 million <input type="checkbox"/> Greater than \$5 million
			<input type="checkbox"/> Less than 1 year <input type="checkbox"/> 1- 3 years <input type="checkbox"/> 4-7 years <input type="checkbox"/> 8-10 years <input type="checkbox"/> More than 10 years	<input type="checkbox"/> Less than \$500K <input type="checkbox"/> \$500K - \$1 million <input type="checkbox"/> \$1-2 million <input type="checkbox"/> \$2-5 million <input type="checkbox"/> Greater than \$5 million
			<input type="checkbox"/> Less than 1 year <input type="checkbox"/> 1- 3 years <input type="checkbox"/> 4-7 years <input type="checkbox"/> 8-10 years <input type="checkbox"/> More than 10 years	<input type="checkbox"/> Less than \$500K <input type="checkbox"/> \$500K - \$1 million <input type="checkbox"/> \$1-2 million <input type="checkbox"/> \$2-5 million <input type="checkbox"/> Greater than \$5 million
			<input type="checkbox"/> Less than 1 year <input type="checkbox"/> 1- 3 years <input type="checkbox"/> 4-7 years <input type="checkbox"/> 8-10 years <input type="checkbox"/> More than 10 years	<input type="checkbox"/> Less than \$500K <input type="checkbox"/> \$500K - \$1 million <input type="checkbox"/> \$1-2 million <input type="checkbox"/> \$2-5 million <input type="checkbox"/> Greater than \$5 million

Contractor	Phone	Address	Contact	Email	NAICS Code	Date Interested	Date Contacted	Interactive Exchange
McDonald Excavating	360-719-1051	2719 Main St. Washougal, WA 98671	Ryan McDonald	ryan@mcdonaldexcavating.nc.com	238910			teleconference & email
Boswell Paving	208-884-1050	1651 W. Jarvis Ct. Meridian, ID 83642	Melynda Boswell	boswellaosolutions@gmail.com	237310			teleconference & email
North Star Enterprises	509-891-0892	2411 Sunrise Lane Liberty Lake, WA 99019	Stephanie Simpkins	stephanie@northse.com	237310			teleconference & email
Wharton Asphalt Mountain West Precast	406-254-9571 435-239-7000	3692 Pa Hollow Trail Billings, MT 59106 1047 W. 600 N., #1 Brigham City, UT 84302	Thomas Costello	whartonasphalt@retzero.net	237310, 238910			teleconference & email
TA Dibble Excavation	208-344-3004	1200 Lake Hazel Lane Boise, ID 83705	Matt Wilson	matt@mwprecast.com	238910			teleconference & email
Richard Gerhardt Peacepipe Construction	208-212-8505 208-522-6625	341 Filer Avenue West Twin Falls, ID 83301 PO Box 205 Roberts, ID 83444	Betty Dibble	betty@tadibble.com	238910			teleconference & email
			Richard Gerhardt	regcontracting@gmail.com	238910			teleconference & email
			Brian Anderson	peacepipe02@gmail.com	238910			teleconference & email

ATTACHMENT 4

Idaho DBE Directory Web Link

<https://itd.dbesystem.com/?TN=itd>

ATTACHMENT 5

Section 26.45: Overall DBE Three-Year Goal Methodology

Attachment 5 – Goal Methodology is attached separately

ATTACHMENT 6

Demonstration of Good Faith Efforts - Forms 1 & 2

[Forms 1 and 2 should be provided as part of the solicitation documents.]

FORM 1: DISADVANTAGED BUSINESS ENTERPRISE (DBE) UTILIZATION

The undersigned bidder/offeror has satisfied the requirements of the bid specification in the following manner (please check the appropriate space):

_____ The bidder/offeror is committed to a minimum of _____ % DBE utilization on this contract.

_____ The bidder/offeror (if unable to meet the DBE goal of _____ %) is committed to a minimum of _____ % DBE utilization on this contract and should submit documentation demonstrating good faith efforts.

Name of bidder/offeror's firm: _____

State Registration No. _____

By _____
(Signature) Title

FORM 2: LETTER OF INTENT

Name of bidder/offeror's firm: _____

Address: _____

City: _____ State: _____ Zip: _____

Name of DBE firm: _____

Address: _____

City: _____ State: _____ Zip: _____

Telephone: _____

Description of work to be performed by DBE firm:

The bidder/offeror is committed to utilizing the above-named DBE firm for the work described above.
The estimated dollar value of this work is \$ _____.

Affirmation

The above-named DBE firm affirms that it will perform the portion of the contract for the estimated dollar value as stated above and that the firm is DBE certified to perform the specific trades.

By _____
(Signature)

Date: _____

(Title)

If the bidder/offeror does not receive award of the prime contract, any and all representations in this Letter of Intent and Affirmation shall be null and void.

Submit this page for each DBE subcontractor.

ATTACHMENT 7

DBE Monitoring and Enforcement Mechanisms

Franklin County has available several remedies to enforce the DBE requirements contained in its contracts, including, but not limited to, the following:

1. Breach of contract action, pursuant to the terms of the contract;
2. Breach of contract action, pursuant to Idaho State Code;

In addition, the Federal government has available several enforcement mechanisms that it may apply to firms participating in the DBE problem, including, but not limited to, the following:

1. Suspension or debarment proceedings pursuant to 49 CFR Part 26
2. Enforcement action pursuant to 49 CFR Part 31
3. Prosecution pursuant to 18 USC 1001.

ATTACHMENT 8
DBE Certification Application Form



UNIFORM CERTIFICATION APPLICATION
DISADVANTAGED BUSINESS ENTERPRISE (DBE) /
AIRPORT CONCESSION DISADVANTAGED BUSINESS ENTERPRISE (ACDBE)
49 C.F.R. Parts 23 and 26

Roadmap for Applicants

1. Should I apply?

You may be eligible to participate in the DBE/ACDBE program if:

- The firm is a for-profit business that performs or seeks to perform transportation related work (or a concession activity) for a recipient of Federal Transit Administration, Federal Highway Administration, or Federal Aviation Administration funds.
- The firm is at least 51% owned by a socially and economically disadvantaged individual(s) who also controls it.
- The firm's disadvantaged owners are U.S. citizens or lawfully admitted permanent residents of the U.S.
- The firm meets the Small Business Administration's size standard and does not exceed \$23.98 million in gross annual receipts for DBE (\$56.42 million for ACDBEs). (Other size standards apply for ACDBE that are banks/financial institutions, car rental companies, pay telephone firms, and automobile dealers.)

2. How do I apply?

First time applicants for DBE certification must complete and submit this certification application and related material to the certifying agency in your home state and participate in an on-site interview conducted by that agency. The attached document checklist can help you locate the items you need to submit to the agency with your completed application. If you fail to submit the required documents, your application may be delayed and/or denied. Firms already certified as a DBE do not have to complete this form, but may be asked by certifying agencies outside of your home state to provide a copy of your initial application form, supporting documents, and any other information you submitted to your home state to obtain certification or to any other state related to your certification.

3. Where can I send my application? [INSERT UCP PARTICIPATING MEMBER CONTACT INFORMATION]

4. Who will contact me about my application and what are the eligibility standards?

The DBE and ACDBE Programs require that all U.S. Department of Transportation (DOT) recipients of federal assistance participate in a statewide Unified Certification Program (UCP). The UCP is a one-stop certification program that eliminates the need for your firm to obtain certification from multiple certifying agencies within your state. The UCP is responsible for certifying firms and maintaining a database of certified DBEs and ACDBEs for DOT grantees, pursuant to the eligibility standards found in 49 C.F.R. Parts 23 and 26.

5. Where can I find more information?

U.S. DOT—<https://www.civilrights.dot.gov/> (This site provides useful links to the rules and regulations governing the DBE/ACDBE program, questions and answers, and other pertinent information)

SBA—Small Business Size Standards matched to the North American Industry Classification System (NAICS): <http://www.census.gov/eos/www/naics/> and <http://www.sba.gov/content/table-small-business-size-standards>.

In collecting the information requested by this form, the Department of Transportation (Department) complies with the provisions of the Federal Freedom of Information and Privacy Acts (5 U.S.C. 552 and 552a). The Privacy Act provides comprehensive protections for your personal information. This includes how information is collected, used, disclosed, stored, and discarded. Your information will not be disclosed to third parties without your consent. The information collected will be used solely to determine your firm's eligibility to participate in the Department's Disadvantaged Business Enterprise Program as defined in 49 CFR §26.5 and the Airport Concession Disadvantaged Business Enterprise Program as defined in 49 CFR §23.3. You may review DOT's complete Privacy Act Statement in the Federal Register published on April 11, 2000 (65 FR 19477).

Under 49 C.F.R. §26.107, dated February 2, 1999 and January 28, 2011, if at any time, the Department or a recipient has reason to believe that any person or firm has willfully and knowingly provided incorrect information or made false statements, the Department may initiate suspension or debarment proceedings against the person or firm under 2 CFR Parts 180 and 1200, Nonprocurement Suspension and Department, take enforcement action under 49 C.F.R. Part 31, Program Fraud and Civil Remedies, and/or refer the matter to the Department of Justice for criminal prosecution under 18 U.S.C. 1001, which prohibits false statements in Federal programs.



**INSTRUCTIONS FOR COMPLETING THE
DISADVANTAGED BUSINESS ENTERPRISE (DBE)
AIRPORT CONCESSIONS DISADVANTAGED BUSINESS ENTERPRISE (ACDBE)
UNIFORM CERTIFICATION APPLICATION**

NOTE: All participating firms must be for-profit enterprises. If your firm is not for profit, then you do NOT qualify for the DBE/ACDBE program and should not complete this application. If you require additional space for any question in this application, please attach additional sheets or copies as needed, taking care to indicate on each attached sheet/copy the section and number of this application to which it refers.

Section 1: CERTIFICATION INFORMATION

A. Basic Contact Information

- (1) Enter the contact name and title of the person completing this application and the person who will serve as your firm's contact for this application.
- (2) Enter the legal name of your firm, as indicated in your firm's Articles of Incorporation or charter.
- (3) Enter the primary phone number of your firm.
- (4) Enter a secondary phone number, if any.
- (5) Enter your firm's fax number, if any.
- (6) Enter the contact person's email address.
- (7) Enter your firm's website addresses, if any.
- (8) Enter the street address of the firm where its offices are physically located (not a P.O. Box).
- (9) Enter the mailing address of your firm, if it is different from your firm's street address.

B. Prior/Other Certifications and Applications

- (10) Check the appropriate box indicating whether your firm is currently certified in the DBE/ACDBE programs, and provide the name of the certifying agency that certified your firm. List the dates of any site visits conducted by your home state and any other states or UCP members. Also provide the names of state/UCP members that conducted the review.
- (11) Indicate whether your firm or any of the persons listed has ever been denied certification as a DBE, 8(a), or Small Disadvantaged Business (SDB) firm, or state and local MBE/WBE firm. Indicate if the firm has ever been decertified from one of these programs. Indicate if the application was withdrawn or whether the firm was debarred, suspended, or otherwise had its bidding privileges denied or restricted by any state or local agency, or Federal entity. If your answer is yes, identify the name of the agency, and explain fully the nature of the action in the space provided. Indicate if you have ever appealed this decision to the Department and if so, attach a copy of USDOT's final agency decision(s).

Section 2: GENERAL INFORMATION

A. Business profile:

- (1) Give a concise description of the firm's primary activities, the product(s) or services the company provides, or type of construction. If your company offers more than one product/service, list primary product or service first (attach additional sheets if necessary). This description may be used in our UCP online directory if you are certified as a DBE.

- (2) If you know the appropriate NAICS Code for the line(s) of work you identified in your business profile, enter the codes in the space provided.
- (3) State the date on which your firm was established as stated in your firm's Articles of Incorporation or charter.
- (4) State the date each person became a firm owner.
- (5) Check the appropriate box describing the manner in which you and each other owner acquired ownership of your firm. If you checked "Other," explain in the space provided.
- (6) Check the appropriate box that indicates whether your firm is "for profit." **If you checked "No," then you do NOT qualify for the DBE/ACDBE program** and should not complete this application. All participating firms must be for-profit enterprises. If the firm is a for profit enterprise, provide the Federal Tax ID number as stated on your firm's Federal tax return.
- (7) Check the appropriate box that describes the type of legal business structure of your firm, as indicated in your firm's Articles of Incorporation or similar document. Identify all joint venture partners if applicable. If you checked "Other," briefly explain in the space provided.
- (8) Indicate in the spaces provided how many employees your firm has, specifying the number of employees who work on a full-time, part-time, and seasonal basis. Attach a list of employees, their job titles, and dates of employment, to your application.
- (9) Specify the firm's gross receipts for each of the past three years, as stated in your firm's filed Federal tax returns. You must submit complete copies of the firm's Federal tax returns for each year. If there are any affiliates or subsidiaries of the applicant firm or owners, you must provide these firms' gross receipts and submit complete copies of these firm(s) Federal tax returns. Affiliation is defined in 49 C.F.R. §26.5 and 13 C.F.R. Part 121.

B. Relationships and Dealings with Other Businesses

- (1) Check the appropriate box that indicates whether your firm is co-located at any of its business locations, or whether your firm shares a telephone number(s), a post office box, any office space, a yard, warehouse, other facilities, any equipment, financing, or any office staff and/or employees with any other business, organization or entity of any kind. If you answered "Yes," then specify the name of the other firm(s) and fully explain the nature of your relationship with these other businesses by identifying the business or person with whom you have any formal, informal, written, or



oral agreement. Provide an explanation of any items shared with other firms in the space provided.

- (2) Check the appropriate box indicating whether any other firm currently has or had an ownership interest in your firm at present or at any time in the past. If you checked yes, please explain.
- (3) Check the appropriate box that indicates whether at present or at any time in the past your firm:
 - (a) ever existed under different ownership, a different type of ownership, or a different name;
 - (b) existed as a subsidiary of any other firm;
 - (c) existed as a partnership in which one or more of the partners are/were other firms;
 - (d) owned any percentage of any other firm; and
 - (e) had any subsidiaries of its own.
- (f) served as a subcontractor with another firm constituting more than 25% of your firm's receipts.

If you answered "Yes" to any of the questions in (3)(a-f), you may be asked to explain the arrangement in detail.

Section 3: MAJORITY OWNER INFORMATION

Identify all individuals or holding companies with any ownership interest in your firm, providing the information requested below (if your firm has more than one owner, provide completed copies of this section for each owner):

A. Identify the majority owner of the firm holding 51% or more ownership interest

- (1) Enter the full name of the owner.
- (2) Enter his/her title or position within your firm.
- (3) Give his/her home phone number.
- (4) Enter his/her home (street) address.
- (5) Indicate this owner's gender.
- (6) Identify the owner's ethnic group membership. If you checked "Other," specify this owner's ethnic group/identity not otherwise listed.
- (7) Check the appropriate box to indicate whether this owner is a U.S. citizen or a lawfully admitted permanent resident. If this owner is neither a U.S. citizen nor a lawfully admitted permanent resident of the U.S., then this owner is NOT eligible for certification as a DBE owner.
- (8) Enter the number of years during which this owner has been an owner of your firm.
- (9) Indicate the percentage of the total ownership this person holds and the date acquired, including (if appropriate), the class of stock owned.
- (10) Indicate the dollar value of this owner's initial investment to acquire an ownership interest in your firm, broken down by cash, real estate, equipment, and/or other investment. Describe how you acquired your business and attach documentation substantiating this investment.

B. Additional Owner Information

- (1) Describe the familial relationship of this owner to each other owner of your firm and employees.
- (2) Indicate whether this owner performs a management or supervisory function for any other business. If you

checked "Yes," state the name of the other business and this owner's function/title held in that business.

- (3) (a) Check the appropriate box that indicates whether this owner owns or works for any other firm(s) that has any relationship with your firm. If you checked "Yes," identify the name of the other business, the nature of the business relationship, and the owner's function at the firm.
 - (b) If the owner works for any other firm, non-profit organization, or is engaged in any other activity more than 10 hours per week, please identify this activity.
- (4) (a) Provide the personal net worth of the owner applying for certification in the space provided. Complete and attach the accompanying "Personal Net Worth Statement for DBE/ACDBE Program Eligibility" with your application. Note, complete this section and accompanying statement only for each owner applying for DBE qualification (i.e., for each owner claiming to be socially and economically disadvantaged).
- (b) Check the appropriate box that indicates whether any trust has been created for the benefit of the disadvantaged owner(s). If you answered "Yes," you may be asked to provide a copy of the trust instrument.
- (5) Check the appropriate to indicate whether any of your immediate family members, managers, or employees, own, manage, or are associated with another company. Immediate family member is defined in 49 C.F.R. §26.5. If you answered "Yes," provide the name of each person, your relationship to them, the name of the company, the type of business, and whether they own or manage the company.

Section 4: CONTROL

A. Identify the firm's Officers and Board of Directors

- (1) In the space provided, state the name, title, date of appointment, ethnicity, and gender of each officer.
- (2) In the space provided, state the name, title, date of appointment, ethnicity, and gender of each individual serving on your firm's Board of Directors.
- (3) Check the appropriate box to indicate whether any of your firm's officers and/or directors listed above performs a management or supervisory function for any other business. If you answered "Yes," identify each person by name, his/her title, the name of the other business in which s/he is involved, and his/her function performed in that other business.
- (4) Check the appropriate box that indicates whether any of your firm's officers and/or directors listed above own or work for any other firm(s) that has a relationship with your firm. (e.g., ownership interest, shared office space, financial investments, equipment leases, personnel sharing, etc.) If you answered "Yes," identify the name of the firm, the individual's name, and the nature of his/her business relationship with that other firm.



B. Duties of Owners, Officers, Directors, Managers and Key Personnel

(1), (2) Specify the roles of the majority and minority owners, directors, officers, and managers, and key personnel who control the functions listed for the business. Submit résumés for each owner and non-owner identified below. State the name of the individual, title, race and gender and percentage ownership if any. Circle the frequency of each person's involvement as follows: "always, frequently, seldom, or never" in each area.

Indicate whether any of the persons listed in this section perform a management or supervisory function for any other business. Identify the person, business, and their title/function. Identify if any of the persons listed above own or work for any other firm(s) that has a relationship with this firm (e.g. ownership interest, shared office space, financial investment, equipment, leases, personnel sharing, etc.) If you answered "Yes," describe the nature of his/her business relationship with that other firm.

C. Inventory: Indicate firm inventory in these categories:

(1) Equipment and Vehicles

State the make and model, and current dollar value of each piece of equipment and motor vehicle held and/or used by your firm. Indicate whether each piece is either owned or leased by your firm or owner, whether it is used as collateral, and where this item is stored.

(2) Office Space

State the street address of each office space held and/or used by your firm. Indicate whether your firm or owner owns or leases the office space and the current dollar value of that property or its lease.

(3) Storage Space

State the street address of each storage space held and/or used by your firm. Indicate whether your firm or owner owns or leases the storage space and the current dollar value of that property or its lease. Provide a signed lease agreement for each property.

D. Does your firm rely on any other firm for management functions or employee payroll?

Check the appropriate box that indicates whether your firm relies on any other firm for management functions or for employee payroll. If you answered "Yes," you may be asked to explain the nature of that reliance and the extent to which the other firm carries out such functions.

E. Financial / Banking Information

Banking Information. State the name, City and State of your firm's bank. In the space provided, identify the persons able to sign checks on this account. Provide bank authorization and signature cards

Bonding Information. State your firm's bonding limits (in dollars), specifying both the aggregate and project limits.

F. Sources, amounts, and purposes of money loaned to your firm, including the names of persons or firms guaranteeing the loan.

State the name and address of each source, the name of person securing the loan, original dollar amount and the current balance of each loan, and the purpose for which each loan was made to your firm. Provide copies of signed loan agreements and security agreements

G. Contributions or transfers of assets to/from your firm and to/from any of its owners or another individual over the past two years:

Indicate in the spaces provided, the type of contribution or asset that was transferred, its current dollar value, the person or firm from whom it was transferred, the person or firm to whom it was transferred, the relationship between the two persons and/or firms, and the date of the transfer.

H. Current licenses/permits held by any owner or employee of your firm.

List the name of each person in your firm who holds a professional license or permit, the type of permit or license, the expiration date of the permit or license, and issuing State of the license or permit. Attach copies of licenses, license renewal forms, permits, and haul authority forms.

I. Largest contracts completed by your firm in the past three years, if any.

List the name of each owner or contractor for each contract, the name and location of the projects under each contract, the type of work performed on each contract, and the dollar value of each contract.

J. Largest active jobs on which your firm is currently working.

For each active job listed, state the name of the prime contractor and the project number, the location, the type of work performed, the project start date, the anticipated completion date, and the dollar value of the contract.

AIRPORT CONCESSION (ACDBE) APPLICANTS

Identify the concession space, address and location at the airport, the value of the property or lease, and fees/lease payments paid to the airport. Provide information concerning any other airport concession businesses the applicant firm or any affiliate owns and/or operates, including name, location, type of concession, and start date of the concession enterprise.

AFFIDAVIT & SIGNATURE

The Affidavit of Certification must accompany your application for certification. Carefully read the attached affidavit in its entirety. Fill in the required information for each blank space, and sign and date the affidavit in the presence of a Notary Public, who must then notarize the form.

Section 1: CERTIFICATION INFORMATION



A. Basic Contact Information

(1) Contact person and Title: _____ (2) Legal name of firm: _____

(3) Phone #: (____) _____ - _____ (4) Other Phone #: (____) _____ - _____ (5) Fax #: (____) _____ - _____

(6) E-mail: _____ (7) Firm Websites: _____

(8) Street address of firm (No P.O. Box): _____ City: _____ County/Parish: _____ State: _____ Zip: _____

(9) Mailing address of firm (if different): _____ City: _____ County/Parish: _____ State: _____ Zip: _____

B. Prior/Other Certifications and Applications

(10) Is your firm currently certified for any of the following U.S. DOT programs?

☐ DBE ☐ ACDBE Names of certifying agencies: _____

⊗ If you are certified in your home state as a DBE/ACDBE, you do not have to complete this application for other states. Ask your state UCP about the interstate certification process.

List the dates of any site visits conducted by your home state and any other states or UCP members:

Date ____/____/____ State/UCP Member: _____ Date ____/____/____ State/UCP Member: _____

(11) Indicate whether the firm or any persons listed in this application have ever been:

(a) Denied certification or decertified as a DBE, ACDBE, 8(a), SDB, MBE/WBE firm? ☐ Yes ☐ No

(b) Withdrawn an application for these programs, or debarred or suspended or otherwise had bidding privileges denied or restricted by any state or local agency, or Federal entity? ☐ Yes ☐ No

If yes, explain the nature of the action. (If you appealed the decision to DOT or another agency, attach a copy of the decision,

Section 2: GENERAL INFORMATION

A. Business Profile: (1) Give a concise description of the firm's primary activities and the product(s) or service(s) it provides. If your company offers more than one product/service, list the primary product or service first. Please use additional paper if necessary. This description may be used in our database and the UCP online directory if you are certified as a DBE or ACDBE.

(2) Applicable NAICS Codes for this line of work include: _____

(3) This firm was established on ____/____/____ (4) I/We have owned this firm since: ____/____/____

(5) Method of acquisition (Check all that apply):

- ☐ Started new business ☐ Bought existing business ☐ Inherited business ☐ Secured concession
☐ Merger or consolidation ☐ Other (explain) _____



(6) Is your firm "for profit"? ☐ Yes ☐ No → **⊗ STOP!** If your firm is NOT for-profit, then you do NOT qualify for this program and should not fill out this application.
Federal Tax ID# _____

(7) Type of Legal Business Structure: (check all that apply):

- ☐ Sole Proprietorship ☐ Limited Liability Partnership
☐ Partnership ☐ Corporation
☐ Limited Liability Company ☐ Joint Venture (Identify all JV partners _____)
☐ Applying as an ACDBE ☐ Other, Describe _____

(8) Number of employees: Full-time _____ Part-time _____ Seasonal _____ Total _____
(Provide a list of employees, their job titles, and dates of employment, to your application).

(9) Specify the firm's gross receipts for the last 3 years. (Submit complete copies of the firm's Federal tax returns for each year. If there are affiliates or subsidiaries of the applicant firm or owners, you must submit complete copies of these firms' Federal tax returns).

Year _____	Gross Receipts of Applicant Firm \$ _____	Gross Receipts of Affiliate Firms \$ _____
Year _____	Gross Receipts of Applicant Firm \$ _____	Gross Receipts of Affiliate Firms \$ _____
Year _____	Gross Receipts of Applicant Firm \$ _____	Gross Receipts of Affiliate Firms \$ _____

B. Relationships and Dealings with Other Businesses

(1) Is your firm co-located at any of its business locations, or does it share a telephone number, P.O. Box, office or storage space, yard, warehouse, facilities, equipment, inventory, financing, office staff, and/or employees with any other business, organization, or entity? ☐ Yes ☐ No

If Yes, explain the nature of your relationship with these other businesses by identifying the business or person with whom you have any formal, informal, written, or oral agreement. Also detail the items shared.

(2) Has any other firm had an ownership interest in your firm at present or at any time in the past?

☐ Yes ☐ No If Yes, explain _____

(3) At present, or at any time in the past, has your firm:

- (a) Ever existed under different ownership, a different type of ownership, or a different name? ☐ Yes ☐ No
(b) Existed as a subsidiary of any other firm? ☐ Yes ☐ No
(c) Existed as a partnership in which one or more of the partners are/were other firms? ☐ Yes ☐ No
(d) Owned any percentage of any other firm? ☐ Yes ☐ No
(e) Had any subsidiaries? ☐ Yes ☐ No
(f) Served as a subcontractor with another firm constituting more than 25% of your firm's receipts? ☐ Yes ☐ No

(If you answered "Yes" to any of the questions in (2) and/or (3)(a)-(f), you may be asked to provide further details and explain whether the arrangement continues).



Section 3: MAJORITY OWNER INFORMATION

A. Identify the majority owner of the firm holding 51% or more ownership interest.

(1) Full Name: _____	(2) Title: _____	(3) Home Phone #: () _____ - _____	
(4) Home Address (Street and Number): _____	City: _____	State: _____	Zip: _____ - _____

(5) Gender: ☐ Male ☐ Female

(6) Ethnic group membership (Check all that apply):

- ☐ Black ☐ Hispanic
☐ Asian Pacific ☐ Native American
☐ Subcontinent Asian
☐ Other (specify) _____

(7) U.S. Citizenship:

- ☐ U.S. Citizen
☐ Lawfully Admitted Permanent Resident

(8) Number of years as owner: _____

(9) Percentage owned: _____ %

Class of stock owned: _____

Date acquired _____

(10) Initial investment to acquire ownership interest in firm:	Type	Dollar Value
	Cash	\$ _____
	Real Estate	\$ _____
	Equipment	\$ _____
	Other	\$ _____

Describe how you acquired your business:

- ☐ Started business myself
☐ It was a gift from: _____
☐ I bought it from: _____
☐ I inherited it from: _____
☐ Other _____

(Attach documentation substantiating your investment)

B. Additional Owner Information

(1) Describe familial relationship to other owners and employees:

(2) Does this owner perform a management or supervisory function for any other business? ☐ Yes ☐ No

If Yes, identify: Name of Business: _____ Function/Title: _____

(3)(a) Does this owner own or work for any other firm(s) that has a relationship with this firm? (e.g., ownership interest, shared office space, financial investments, equipment, leases, personnel sharing, etc.) ☐ Yes ☐ No

Identify the name of the business, and the nature of the relationship, and the owner's function at the firm:

(b) Does this owner work for any other firm, non-profit organization, or is engaged in any other activity more than 10 hours per week? If yes, identify this activity: _____

(4)(a) What is the personal net worth of this disadvantaged owner applying for certification ? \$ _____

(b) Has any trust been created for the benefit of this disadvantaged owner(s)? ☐ Yes ☐ No

(If Yes, you may be asked to provide a copy of the trust instrument).

(5) Do any of your immediate family members, managers, or employees own, manage, or are associated with another company? ☐ Yes ☐ No If Yes, provide their name, relationship, company, type of business, and indicate whether they own or manage the company: (Please attach extra sheets, if needed): _____



Section 3: OWNER INFORMATION, Cont'd.

A. Identify all individuals, firms, or holding companies that hold LESS THAN 51% ownership interest in the firm (*Attach separate sheets for each additional owner*)

(1) Full Name:	(2) Title:	(3) Home Phone #:
_____	_____	() _____ - _____
(4) Home Address (Street and Number):	City:	State:
_____	_____	_____ - _____
Zip:	_____	

(5) Gender: ☐ Male ☐ Female

(6) Ethnic group membership (*Check all that apply*)

- ☐ Black ☐ Hispanic
☐ Asian Pacific ☐ Native American
☐ Subcontinent Asian
☐ Other (*specify*) _____

(7) U.S. Citizenship:

- ☐ U.S. Citizen
☐ Lawfully Admitted Permanent Resident

(8) Number of years as owner: _____

(9) Percentage owned: _____ %

Class of stock owned: _____

Date acquired _____

(10) Initial investment to acquire ownership interest in firm:	Type	Dollar Value
	Cash	\$ _____
	Real Estate	\$ _____
	Equipment	\$ _____
	Other	\$ _____

Describe how you acquired your business:

- ☐ Started business myself
☐ It was a gift from: _____
☐ I bought it from: _____
☐ I inherited it from: _____
☐ Other _____

(*Attach documentation substantiating your investment*)

B. Additional Owner Information

(1) Describe familial relationship to other owners and employees:

(2) Does this owner perform a management or supervisory function for any other business? ☐ Yes ☐ No

If Yes, identify: Name of Business: _____ Function/Title: _____

(3)(a) Does this owner own or work for any other firm(s) that has a relationship with this firm? (*e.g., ownership interest, shared office space, financial investments, equipment, leases, personnel sharing, etc.*) ☐ Yes ☐ No

Identify the name of the business, and the nature of the relationship, and the owner's function at the firm:

(b) Does this owner work for any other firm, non-profit organization, or is engaged in any other activity more than 10 hours per week? If yes, identify this activity: _____

(4)(a) What is the personal net worth of this disadvantaged owner applying for certification? \$ _____

(b) Has any trust been created for the benefit of this disadvantaged owner(s)? ☐ Yes ☐ No

(*If Yes, you may be asked to provide a copy of the trust instrument*).

(5) Do any of your immediate family members, managers, or employees own, manage, or are associated with another company? ☐ Yes ☐ No If Yes, provide their name, relationship, company, type of business, and indicate whether they own or manage: (*Please attach extra sheets, if needed*): _____

Section 4: CONTROL



A. Identify your firm's Officers and Board of Directors *(If additional space is required, attach a separate sheet):*

	Name	Title	Date Appointed	Ethnicity	Gender
(1) Officers of the Company	(a)				
	(b)				
	(c)				
	(d)				
(2) Board of Directors	(a)				
	(b)				
	(c)				
	(d)				

(3) Do any of the persons listed above perform a management or supervisory function for any other business?
☐ Yes ☐ No If Yes, identify for each:

Person: _____ Title: _____
 Business: _____ Function: _____

Person: _____ Title: _____
 Business: _____ Function: _____

(4) Do any of the persons listed in section A above own or work for any other firm(s) that has a relationship with this firm? *(e.g., ownership interest, shared office space, financial investments, equipment, leases, personnel sharing, etc.)*
☐ Yes ☐ No If Yes, identify for each:

Firm Name: _____ Person: _____
 Nature of Business Relationship: _____

B. Duties of Owners, Officers, Directors, Managers, and Key Personnel

1. (Identify your firm's management personnel who control your firm in the following areas (Attach separate sheets as needed).)

A = Always F = Frequently	S = Seldom N = Never	Majority Owner (51% or more)				Minority Owner (49% or less)			
		Name: _____		Title: _____		Name: _____		Title: _____	
		Percent Owned: _____				Percent Owned: _____			
Sets policy for company direction/scope of operations		A <input type="checkbox"/>	F <input type="checkbox"/>	S <input type="checkbox"/>	N <input type="checkbox"/>	A <input type="checkbox"/>	F <input type="checkbox"/>	S <input type="checkbox"/>	N <input type="checkbox"/>
Bidding and estimating		A <input type="checkbox"/>	F <input type="checkbox"/>	S <input type="checkbox"/>	N <input type="checkbox"/>	A <input type="checkbox"/>	F <input type="checkbox"/>	S <input type="checkbox"/>	N <input type="checkbox"/>
Major purchasing decisions		A <input type="checkbox"/>	F <input type="checkbox"/>	S <input type="checkbox"/>	N <input type="checkbox"/>	A <input type="checkbox"/>	F <input type="checkbox"/>	S <input type="checkbox"/>	N <input type="checkbox"/>
Marketing and sales		A <input type="checkbox"/>	F <input type="checkbox"/>	S <input type="checkbox"/>	N <input type="checkbox"/>	A <input type="checkbox"/>	F <input type="checkbox"/>	S <input type="checkbox"/>	N <input type="checkbox"/>
Supervises field operations		A <input type="checkbox"/>	F <input type="checkbox"/>	S <input type="checkbox"/>	N <input type="checkbox"/>	A <input type="checkbox"/>	F <input type="checkbox"/>	S <input type="checkbox"/>	N <input type="checkbox"/>
Attend bid opening and lettings		A <input type="checkbox"/>	F <input type="checkbox"/>	S <input type="checkbox"/>	N <input type="checkbox"/>	A <input type="checkbox"/>	F <input type="checkbox"/>	S <input type="checkbox"/>	N <input type="checkbox"/>
Perform office management (billing, accounts receivable/payable, etc.)		A <input type="checkbox"/>	F <input type="checkbox"/>	S <input type="checkbox"/>	N <input type="checkbox"/>	A <input type="checkbox"/>	F <input type="checkbox"/>	S <input type="checkbox"/>	N <input type="checkbox"/>
Hires and fires management staff		A <input type="checkbox"/>	F <input type="checkbox"/>	S <input type="checkbox"/>	N <input type="checkbox"/>	A <input type="checkbox"/>	F <input type="checkbox"/>	S <input type="checkbox"/>	N <input type="checkbox"/>
Hire and fire field staff or crew		A <input type="checkbox"/>	F <input type="checkbox"/>	S <input type="checkbox"/>	N <input type="checkbox"/>	A <input type="checkbox"/>	F <input type="checkbox"/>	S <input type="checkbox"/>	N <input type="checkbox"/>
Designates profits spending or investment		A <input type="checkbox"/>	F <input type="checkbox"/>	S <input type="checkbox"/>	N <input type="checkbox"/>	A <input type="checkbox"/>	F <input type="checkbox"/>	S <input type="checkbox"/>	N <input type="checkbox"/>
Obligates business by contract/credit		A <input type="checkbox"/>	F <input type="checkbox"/>	S <input type="checkbox"/>	N <input type="checkbox"/>	A <input type="checkbox"/>	F <input type="checkbox"/>	S <input type="checkbox"/>	N <input type="checkbox"/>
Purchase equipment		A <input type="checkbox"/>	F <input type="checkbox"/>	S <input type="checkbox"/>	N <input type="checkbox"/>	A <input type="checkbox"/>	F <input type="checkbox"/>	S <input type="checkbox"/>	N <input type="checkbox"/>
Signs business checks		A <input type="checkbox"/>	F <input type="checkbox"/>	S <input type="checkbox"/>	N <input type="checkbox"/>	A <input type="checkbox"/>	F <input type="checkbox"/>	S <input type="checkbox"/>	N <input type="checkbox"/>

2. Complete for all Officers, Directors, Managers, and Key Personnel who control the following functions for the firm. (Attach separate sheets as needed).

A = Always S = Seldom F = Frequently N = Never	Officer/Director/Manager/Key Personnel				Officer/Director/Manager/ Key Personnel			
	Name: _____ Title: _____ Race and Gender: _____ Percent Owned: _____				Name: _____ Title: _____ Race and Gender: _____ Percent Owned: _____			
Sets policy for company direction/scope of operations	A <input type="checkbox"/>	F <input type="checkbox"/>	S <input type="checkbox"/>	N <input type="checkbox"/>	A <input type="checkbox"/>	F <input type="checkbox"/>	S <input type="checkbox"/>	N <input type="checkbox"/>
Bidding and estimating	A <input type="checkbox"/>	F <input type="checkbox"/>	S <input type="checkbox"/>	N <input type="checkbox"/>	A <input type="checkbox"/>	F <input type="checkbox"/>	S <input type="checkbox"/>	N <input type="checkbox"/>
Major purchasing decisions	A <input type="checkbox"/>	F <input type="checkbox"/>	S <input type="checkbox"/>	N <input type="checkbox"/>	A <input type="checkbox"/>	F <input type="checkbox"/>	S <input type="checkbox"/>	N <input type="checkbox"/>
Marketing and sales	A <input type="checkbox"/>	F <input type="checkbox"/>	S <input type="checkbox"/>	N <input type="checkbox"/>	A <input type="checkbox"/>	F <input type="checkbox"/>	S <input type="checkbox"/>	N <input type="checkbox"/>
Supervises field operations	A <input type="checkbox"/>	F <input type="checkbox"/>	S <input type="checkbox"/>	N <input type="checkbox"/>	A <input type="checkbox"/>	F <input type="checkbox"/>	S <input type="checkbox"/>	N <input type="checkbox"/>
Attend bid opening and lettings	A <input type="checkbox"/>	F <input type="checkbox"/>	S <input type="checkbox"/>	N <input type="checkbox"/>	A <input type="checkbox"/>	F <input type="checkbox"/>	S <input type="checkbox"/>	N <input type="checkbox"/>
Perform office management (billing, accounts receivable/payable, etc.)	A <input type="checkbox"/>	F <input type="checkbox"/>	S <input type="checkbox"/>	N <input type="checkbox"/>	A <input type="checkbox"/>	F <input type="checkbox"/>	S <input type="checkbox"/>	N <input type="checkbox"/>
Hires and fires management staff	A <input type="checkbox"/>	F <input type="checkbox"/>	S <input type="checkbox"/>	N <input type="checkbox"/>	A <input type="checkbox"/>	F <input type="checkbox"/>	S <input type="checkbox"/>	N <input type="checkbox"/>
Hire and fire field staff or crew	A <input type="checkbox"/>	F <input type="checkbox"/>	S <input type="checkbox"/>	N <input type="checkbox"/>	A <input type="checkbox"/>	F <input type="checkbox"/>	S <input type="checkbox"/>	N <input type="checkbox"/>
Designates profits spending or investment	A <input type="checkbox"/>	F <input type="checkbox"/>	S <input type="checkbox"/>	N <input type="checkbox"/>	A <input type="checkbox"/>	F <input type="checkbox"/>	S <input type="checkbox"/>	N <input type="checkbox"/>
Obligates business by contract/credit	A <input type="checkbox"/>	F <input type="checkbox"/>	S <input type="checkbox"/>	N <input type="checkbox"/>	A <input type="checkbox"/>	F <input type="checkbox"/>	S <input type="checkbox"/>	N <input type="checkbox"/>
Purchase equipment	A <input type="checkbox"/>	F <input type="checkbox"/>	S <input type="checkbox"/>	N <input type="checkbox"/>	A <input type="checkbox"/>	F <input type="checkbox"/>	S <input type="checkbox"/>	N <input type="checkbox"/>
Signs business checks	A <input type="checkbox"/>	F <input type="checkbox"/>	S <input type="checkbox"/>	N <input type="checkbox"/>	A <input type="checkbox"/>	F <input type="checkbox"/>	S <input type="checkbox"/>	N <input type="checkbox"/>

Do any of the persons listed in B1 or B2 perform a management or supervisory function for any other business? If Yes, identify the person, the business, and their title/function: _____

Do any of the persons listed above own or work for any other firm(s) that has a relationship with this firm? (e.g., ownership interest, shared office space, financial investments, equipment, leases, personnel sharing, etc.) If Yes, describe the nature of the business relationship: _____

C. Inventory: Indicate your firm's inventory in the following categories (Please attach additional sheets if needed):

1. Equipment and Vehicles

Make and Model	Current Value	Owned or Leased by Firm or Owner?	Used as collateral?	Where is item stored?
1. _____				
2. _____				
3. _____				
4. _____				
5. _____				
6. _____				
7. _____				
8. _____				
9. _____				

2. Office Space

Street Address	Owned or Leased by Firm or Owner?	Current Value of Property or Lease



3. Storage Space *(Provide signed lease agreements for the properties listed)*

Street Address

**Owned or Leased by
Firm or Owner?**

Current Value of Property or Lease

D. Does your firm rely on any other firm for management functions or employee payroll? ☐ Yes ☐ No

E. Financial/Banking Information *(Provide bank authorization and signature cards)*

Name of bank: _____ City and State: _____

The following individuals are able to sign checks on this account: _____

Name of bank: _____ City and State: _____

The following individuals are able to sign checks on this account: _____

Bonding Information: If you have bonding capacity, identify the firm's bonding aggregate and project limits:

Aggregate limit \$ _____ Project limit \$ _____

F. Identify all sources, amounts, and purposes of money loaned to your firm including from financial institutions. Identify whether you the owner and any other person or firm loaned money to the applicant DBE/ACDBE. Include the names of any persons or firms guaranteeing the loan, if other than the listed owner.
(Provide copies of signed loan agreements and security agreements).

Name of Source	Address of Source	Name of Person Guaranteeing the Loan	Original Amount	Current Balance	Purpose of Loan
1.	_____	_____	_____	_____	_____
2.	_____	_____	_____	_____	_____
3.	_____	_____	_____	_____	_____

G. List all contributions or transfers of assets to/from your firm and to/from any of its owners or another individual over the past two years *(Attach additional sheets if needed):*

Contribution/Asset	Dollar Value	From Whom Transferred	To Whom Transferred	Relationship	Date of Transfer
1.	_____	_____	_____	_____	_____
2.	_____	_____	_____	_____	_____
3.	_____	_____	_____	_____	_____

H. List current licenses/permits held by any owner and/or employee of your firm
(e.g. contractor, engineer, architect, etc.)(Attach additional sheets if needed):

Name of License/Permit Holder	Type of License/Permit	Expiration Date	State
1.	_____	_____	_____
2.	_____	_____	_____
3.	_____	_____	_____



I. List the three largest contracts completed by your firm in the past three years, if any:

	Name of Owner/Contractor	Name/Location of Project	Type of Work Performed	Dollar Value of Contract
1.				
2.				
3.				

J. List the three largest active jobs on which your firm is currently working:

	Name of Prime Contractor and Project Number	Location of Project	Type of Work	Project Start Date	Anticipated Completion Date	Dollar Value of Contract
1.						
2.						
3.						

AIRPORT CONCESSION (ACDBE) APPLICANTS ONLY MUST COMPLETE THIS SECTION

Identify the following information concerning the ACDBE applicant firm:

<u>Concession Space</u>	<u>Address / Location at Airport</u>	<u>Value of Property or Lease</u>	<u>Fees/Lease Payments Paid to the Airport</u>

Provide information concerning any other airport concession businesses the applicant firm or any affiliate owns and/or operates, including name, location, type of concession, and start date of concession

<u>Name of Concession</u>	<u>Location</u>	<u>Type of Concession</u>	<u>Start Date of Concession</u>



AFFIDAVIT OF CERTIFICATION

This form must be signed and notarized for each owner upon which disadvantaged status is relied.

A MATERIAL OR FALSE STATEMENT OR OMISSION MADE IN CONNECTION WITH THIS APPLICATION IS SUFFICIENT CAUSE FOR DENIAL OF CERTIFICATION, REVOCATION OF A PRIOR APPROVAL, INITIATION OF SUSPENSION OR DEBARMENT PROCEEDINGS, AND MAY SUBJECT THE PERSON AND/OR ENTITY MAKING THE FALSE STATEMENT TO ANY AND ALL CIVIL AND CRIMINAL PENALTIES AVAILABLE PURSUANT TO APPLICABLE FEDERAL AND STATE LAW.

I _____ (full name printed),
swear or affirm under penalty of law that I am
_____ (title) of the applicant firm

_____ and that I
have read and understood all of the questions in this
application and that all of the foregoing information and
statements submitted in this application and its attachments
and supporting documents are true and correct to the best of
my knowledge, and that all responses to the questions are full
and complete, omitting no material information. The responses
include all material information necessary to fully and
accurately identify and explain the operations, capabilities and
pertinent history of the named firm as well as the ownership,
control, and affiliations thereof.

I recognize that the information submitted in this application is
for the purpose of inducing certification approval by a
government agency. I understand that a government agency
may, by means it deems appropriate, determine the accuracy
and truth of the statements in the application, and I authorize
such agency to contact any entity named in the application, and
the named firm's bonding companies, banking institutions,
credit agencies, contractors, clients, and other certifying
agencies for the purpose of verifying the information supplied
and determining the named firm's eligibility.

I agree to submit to government audit, examination and review
of books, records, documents and files, in whatever form they
exist, of the named firm and its affiliates, inspection of its
places(s) of business and equipment, and to permit interviews
of its principals, agents, and employees. I understand that
refusal to permit such inquiries shall be grounds for denial of
certification.

If awarded a contract, subcontract, concession lease or
sublease, I agree to promptly and directly provide the prime
contractor, if any, and the Department, recipient agency, or
federal funding agency on an ongoing basis, current, complete
and accurate information regarding (1) work performed on the
project; (2) payments; and (3) proposed changes, if any, to the
foregoing arrangements.

I agree to provide written notice to the recipient agency or
Unified Certification Program of any material change in the
information contained in the original application within 30
calendar days of such change (e.g., ownership changes,
address/telephone number, personal net worth exceeding \$1.32
million, etc.).

I acknowledge and agree that any misrepresentations in this
application or in records pertaining to a contract or subcontract
will be grounds for terminating any contract or subcontract
which may be awarded; denial or revocation of certification;
suspension and debarment; and for initiating action under
federal and/or state law concerning false statement, fraud or
other applicable offenses.

I certify that I am a socially and economically disadvantaged
individual who is an owner of the above-referenced firm seeking
certification as a Disadvantaged Business Enterprise or Airport
Concession Disadvantaged Business Enterprise. In support of my
application, I certify that I am a member of one or more of the
following groups, and that I have held myself out as a member of
the group(s): (Check all that apply):

- ☐ Female ☐ Black American ☐ Hispanic American
☐ Native American ☐ Asian-Pacific American
☐ Subcontinent Asian American ☐ Other (specify) _____

I certify that I am socially disadvantaged because I have been
subjected to racial or ethnic prejudice or cultural bias, or have
suffered the effects of discrimination, because of my identity
as a member of one or more of the groups identified above,
without regard to my individual qualities.

I further certify that my personal net worth does not exceed
\$1.32 million, and that I am economically disadvantaged
because my ability to compete in the free enterprise system has
been impaired due to diminished capital and credit
opportunities as compared to others in the same or similar line
of business who are not socially and economically
disadvantaged.

I declare under penalty of perjury that the information
provided in this application and supporting documents is true
and correct.

Signature _____
(DBE/ACDBE Applicant) (Date) _____

NOTARY CERTIFICATE



UNIFORM CERTIFICATION APPLICATION SUPPORTING DOCUMENTS CHECKLIST

In order to complete your application for DBE or ACDBE certification, you must attach copies of all of the following **REQUIRED** documents. A failure to supply any information requested by the UCP may result in your firm denied DBE/ACDBE certification.

Required Documents for All Applicants

- ☐ Résumés (that include places of employment with corresponding dates), for all owners, officers, and key personnel of the applicant firm
- ☐ Personal Net Worth Statement for each socially and economically disadvantaged owners comprising 51% or more of the ownership percentage of the applicant firm.
- ☐ Personal Federal tax returns for the past 3 years, if applicable, for each disadvantaged owner
- ☐ Federal tax returns (and requests for extensions) filed by the firm and its affiliates with related schedules, for the past 3 years.
- ☐ Documented proof of contributions used to acquire ownership for each owner (e.g., both sides of cancelled checks)
- ☐ Signed loan and security agreements, and bonding forms
- ☐ List of equipment and/or vehicles owned and leased including VIN numbers, copy of titles, proof of ownership, insurance cards for each vehicle.
- ☐ Title(s), registration certificate(s), and U.S. DOT numbers for each truck owned or operated by your firm
- ☐ Licenses, license renewal forms, permits, and haul authority forms
- ☐ Descriptions of all real estate (including office/storage space, etc.) owned/leased by your firm and documented proof of ownership/signed leases
- ☐ Documented proof of any transfers of assets to/from your firm and/or to/from any of its owners over the past 2 years
- ☐ DBE/ACDBE and SBA 8(a), SDB, MBE/WBE certifications, denials, and/or decertifications, if applicable; and any U.S. DOT appeal decisions on these actions.
- ☐ Bank authorization and signatory cards
- ☐ Schedule of salaries (or other remuneration) paid to all officers, managers, owners, and/or directors of the firm
- ☐ List of all employees, job titles, and dates of employment.
- ☐ Proof of warehouse/storage facility ownership or lease arrangements

Partnership or Joint Venture

- ☐ Original and any amended Partnership or Joint Venture Agreements

Corporation or LLC

- ☐ Official Articles of Incorporation (signed by the state official)
- ☐ Both sides of all corporate stock certificates and your firm's stock transfer ledger
- ☐ Shareholders' Agreement(s)
- ☐ Minutes of all stockholders and board of directors meetings

- ☐ Corporate by-laws and any amendments
- ☐ Corporate bank resolution and bank signature cards
- ☐ Official Certificate of Formation and Operating Agreement with any amendments (for LLCs)

Optional Documents to Be Provided on Request

The UCP to which you are applying may require the submission of the following documents. If requested to provide these document, you must supply them with your application or at the on-site visit.

- ☐ Proof of citizenship
- ☐ Insurance agreements for each truck owned or operated by your firm
- ☐ Audited financial statements (if available)
- ☐ Personal Federal Tax returns for the past 3 years, if applicable, for other disadvantaged owners of the firm.
- ☐ Trust agreements held by any owner claiming disadvantaged status
- ☐ Year-end balance sheets and income statements for the past 3 years (or life of firm, if less than three years)

Suppliers

- ☐ List of product lines carried and list of distribution equipment owned and/or leased

ATTACHMENT 9
Idaho's UCP/MOU Agreements

STATEMENT OF AGREEMENT Idaho Unified Certification Program

The Unified Certification Program process developed and implemented by the Idaho Transportation Department for the State of Idaho has been reviewed by this agency. We recognized this program as the authorizing process for certification, recertification and decertification of firms in the Disadvantaged Business Enterprise Program for the State of Idaho as required by 49 CFR Part 26.81.

BY: ELLOTT LARSEN, COUNTY CLERK

DATE: 8-31-01

AGENCY: FRANKLIN COUNTY

ADDRESS: 39 W. ONEIDA, PRESTON, IDAHO 83263

PHONE: 208-852-1090

Preston report

RETURN STATEMENT OF AGREEMENT BY AUGUST 31,2001

**TO: Julie Caldwell
Bureau Of Civil Rights
Idaho Transportation Department
P.O. Box 7129
Boise, Idaho 83703-1129**

RECEIVED

SEP 01 2001

**ITD
CIVIL RIGHTS**

ATTACHMENT 10
Small Business Element

FOSTERING SMALL BUSINESS PARTICIPATION

DBE program regulations, CFR § 26.39, that became effective on February 28, 2011, require that a DBE program must include an element to structure contracting requirements to facilitate competition by small business concerns, taking reasonable steps to eliminate obstacles to their participation, including unnecessary and unjustified bundling of contract requirements that may preclude small business participation in procurements as prime contractors or subcontractors.

For purpose of Preston Airport's Small Business Element; a small business is defined as a company and/or firm in whom annual revenue does not exceed \$250,000.00.

Prime contracts and subcontracts are available to small businesses as a result of the Airport Improvement Program. The Preston Airport believes that it is currently meeting the objectives of its construction contracting activities by ensuring that a reasonable number of prime contracts and subcontracts are of a size that small businesses, including DBEs, can reasonably perform. Quantities, specifications, and delivery schedules are arranged to facilitate small business participation. Large contracts are divided into multiple bid schedules and bid items to make it easier to define portions of the work to subcontract. The Preston Airport will put into place monitoring of consultant-design projects for possible small business participation and encouraging use of small businesses in projects. The Preston Airport seeks ways to include all available contractors in its contracts; this may include bundling or unbundling jobs or limiting the size of its contracts so that smaller businesses may be awarded contracts. In some cases jobs usually performed by subcontractors can be performed as an unbundled contract as a prime contract, especially if the outcome of the overall project will not be effected by the unbundled contracting opportunity.

The Preston Airport provides opportunities for small businesses in contracts awarded using simplified procedures subject to the requirements of applicable Federal, state and local requirements. Through small business outreach, the Preston Airport with the assistance of the State Department of Transportation DBE program will assist small firms to become a prime and in growing their business to eventually compete on larger contracts. The Preston Airport will maintain a contact list comprised of businesses, partners and economic development contacts established through various educational opportunities and affiliations. Through this contact list, the Preston Airport will be able to communicate to small businesses about upcoming contracting and subcontracting opportunities.

The Preston Airport will maintain contacts with the Small Business Administration, area economic development companies and associations, the State Department of Labor and the Department of Commerce in order to offer small businesses assistance in various business growing services. These partnerships will be instrumental in allowing small businesses to grow and learn more about becoming larger companies and being able to bid larger jobs at the Preston Airport.

In addition to the above strategies, the Preston Airport will when possible:

- In multi-year design-build contracts or other large contracts (*e.g.*, for “megaprojects”) require bidders on the prime contract to specify elements of the contract or specific subcontracts that are of a size that small businesses, including DBEs, can reasonably perform.
- On prime contracts not having DBE contract goals, require the prime contractor to provide subcontracting opportunities of a size that small businesses, including DBEs, can reasonably perform, rather than self-performing all the work involved.
- Identify alternative acquisition strategies and structuring procurements to facilitate the ability of consortia or joint ventures consisting of small businesses, including DBEs, to compete for and perform prime contracts.

The DBE Liaison Officer, Shauna Geddes, will keep a record of the DBE/Small Business participation on FAA assisted projects in accordance with this DBE Plan.

The Preston Airport will implement this Small Business Element when able.

Assurances

1. assurance that the program is authorized under state law;
2. assurance that certified DBEs that meet the size criteria established under the program are presumptively eligible to participate in the program;
3. assurance that there are no geographic preferences or limitations imposed on any federally assisted procurement included in the program;
4. assurance that there are no limits on the number of contracts awarded to firms participating in the program but that every effort will be made to avoid creating barriers to the use of new, emerging, or untried businesses; and
5. assurance that aggressive steps will be taken to encourage those minority and women owned firms that are eligible for DBE certification to become certified.
6. assurance that the program is open to small businesses regardless of their location (i.e., that there is no local or other geographic preference