

Spec Sheet MWS715

Short Description

- > IP55 protection
- > Warewashing cabinet machine
- > AISI 304 Stainless Steel construction
- > 20 washing programs customizable in all parameters (time, washing pressure, wash/rinse cycles)
- > Multiwasher system to wash different types of objects
- > Tailor made trolleys designed on objects specifications
- > Touch Screen Controller and emergency button switch
- > High Pressure Washing Pump, up to 200 PSI
- > Washing temperature up to 176 °F
- > Rinsing temperature up to 194 °F

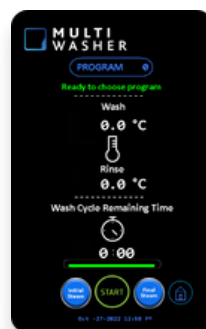


Options

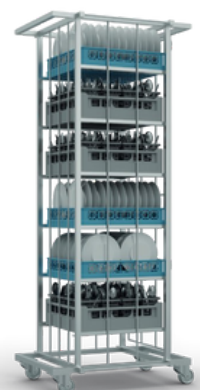
- | | | |
|-------------------------------|------------------------------------|----------------------------|
| > SPINNING DRYER SYSTEM | > AUTOMATIC WATER TANK REPLACEMENT | > EXTRA HMI |
| > DIAPHRAGM RINSE DOSING PUMP | > QUIMICAL LEVEL DETECTION | > REINFORCEMENT PLATE KIT |
| > PRESSURE VARIATION SYSTEM | > STEAM HEATING | > CUSTOMIZED INTERNAL CAGE |
| > EXTERNAL FILTER SYSTEM | > EXTRA DOOR | > KIT CATERING |



Multi Products Washing



Up to 20 Personalized Programs



Tailor-Made Trolleys



Data Sheet

MWS715

TECHNICAL FEATURES

VOLTAGE/FLA/FREQUENCY
TOTAL POWER [HP]
TOTAL POWER (WITH INVERTER) [HP]
NET WEIGHT [lbs]
GROSS WEIGHT [lbs]
EXTERNAL MEASURES (WxDxH)[INCHES]
INTERNAL MEASURES (WxDxH)[INCHES]

ELECTRIC

208-240V 132.9A | 440-480V 62.2A 3PH 60Hz
65
89.5
4300
5950
101" x 83 1/2" x 112 1/8"
47 1/4" x 47 1/4" x 84"

WASHING DATA

TANK [Gal] 132
TANK HEATING POWER [HP] 43
TANK FILLING TIME [43 PSI PRESSURE] [min] 30
WASH PUMP POWER [HP] 20.4
TANK WASH TEMPERATURE [°F] 120-176
WASHING PRESSURE [PSI] 200
WASH PUMP FLOW [Gal/min] 113

RINSE DATA

BOILER VOLUME [Gal] 5.3
BOILER HEATING POWER [HP] 24.5
RINSE PUMP POWER [HP] 0.59
RINSE TEMPERATURE [°F] 194
RINSE PRESSURE [PSI] 43
RINSE PUMP FLOW [Gal] 4.22
WATER CONSUMPTION BY CYCLE (30s RINSE)[Gal] 2.11

SPINNING DATA

ROTARY BASKET MOTOR POWER [HP] 1
SPINNING SPEED VARIABLE

EXHAUST DATA

EXHAUST MOTOR POWER [HP] 0.6
STEAM EXHAUST FLOW [cfm] 825

Standard Features

MWS715

OVERVIEW:

> Benchmark shows that under standard scenarios of correct equipment application/use, it is possible to save up to:

- 2/3 less water;
- 70% less detergent;
- 50% energy usage;



> Wash cycle up to 176 °F



> Rinse cycle up to 194 °F

> Dual heat rinse boosters

> Pump and spray nozzle system up to 200 PSI



> Integrated rinse pump system

> Internal water filter system



> Double insulated cabinet for heat and sound



> Ergonomic door handle

> Intuitive 7" touch screen



> User friendly and upgradable interface

> Predefined or fully customizable cleaning cycle parameters

> Remote monitoring and service

> Automatic chemical dosing



> Industrial chemical pumps for detergent & rinse aid (rinse aid - optional)

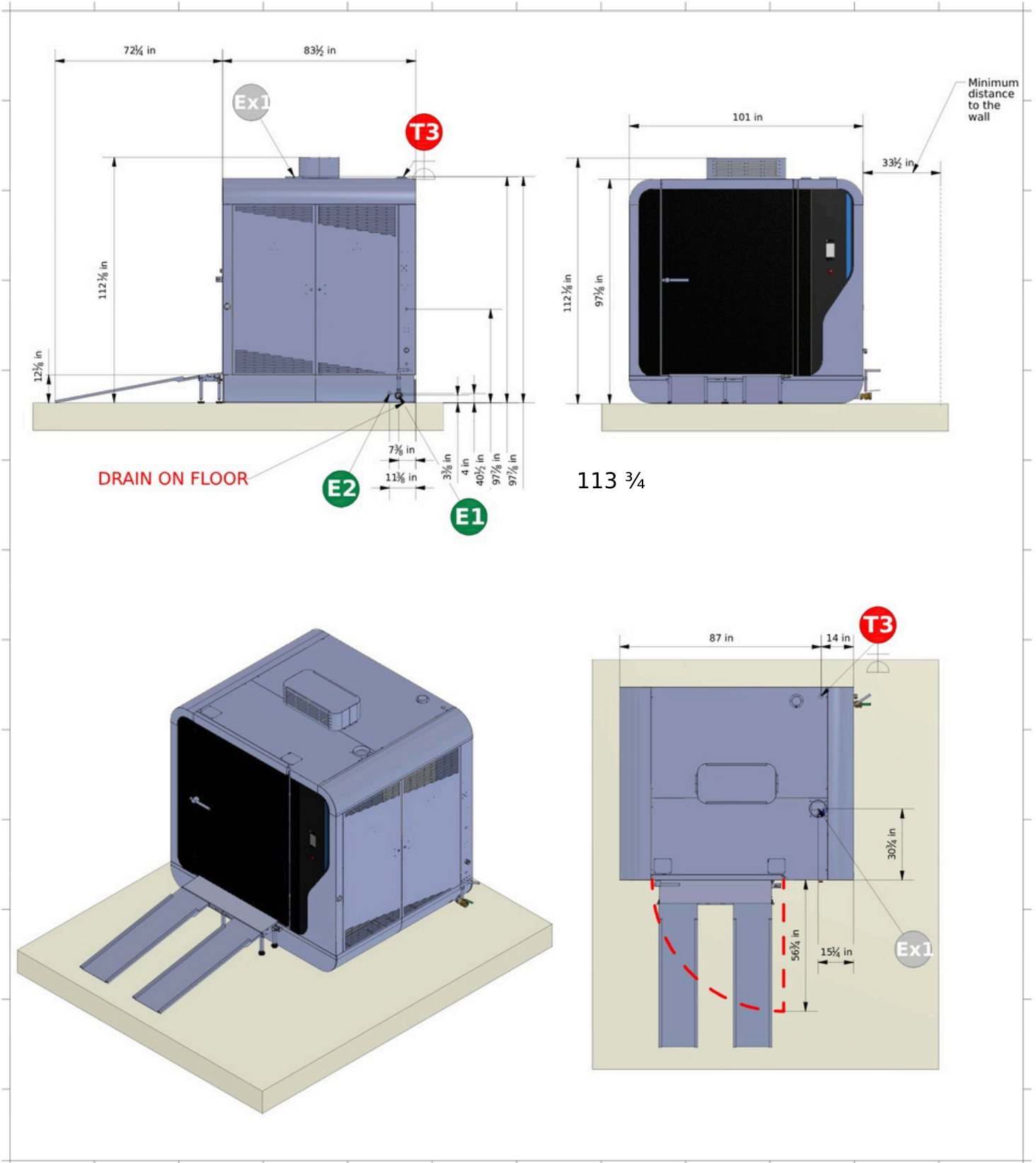
> Emergency stop switch



> Two easily removable doors for convenient access to components for service

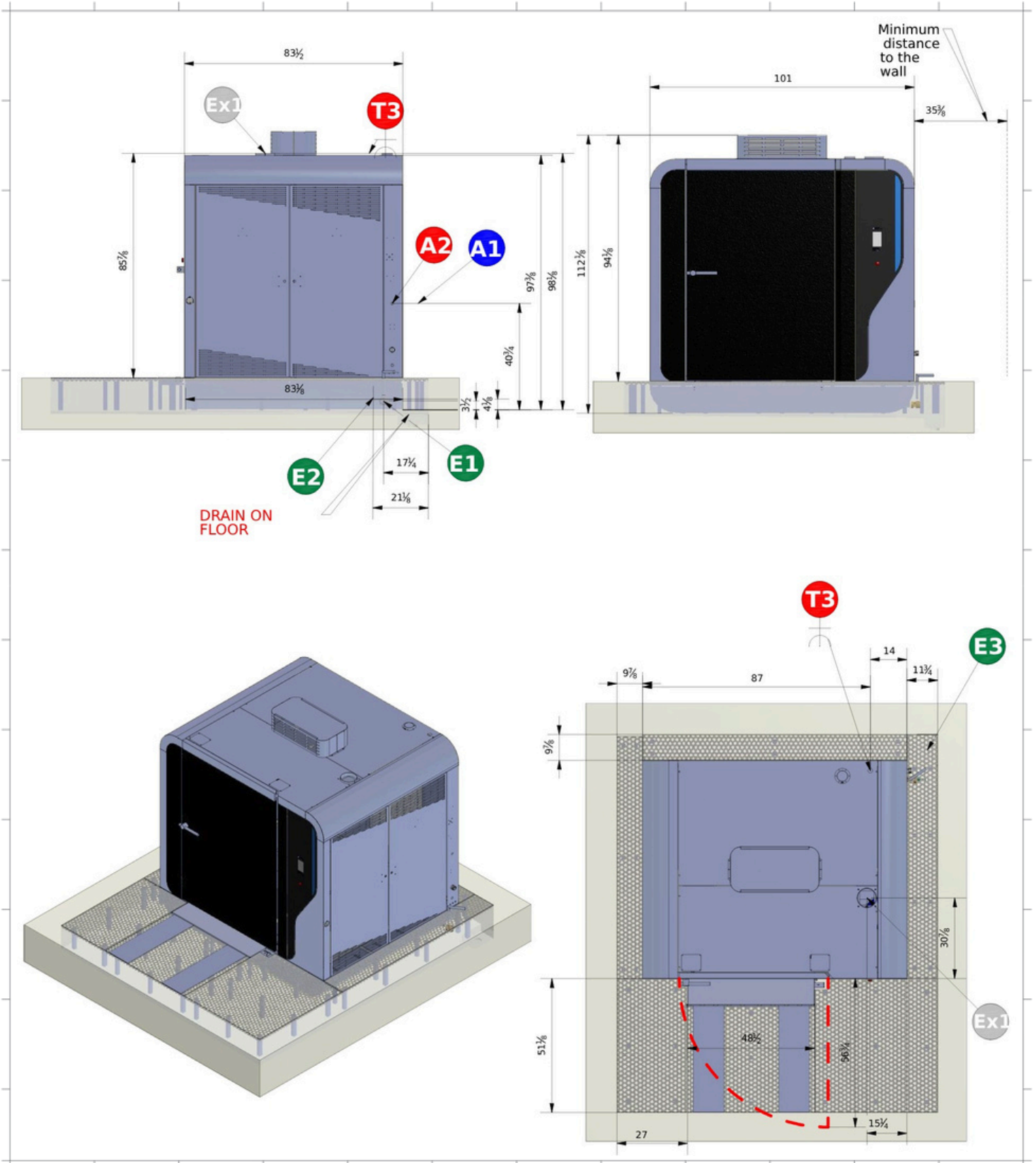


MWS715 - on floor





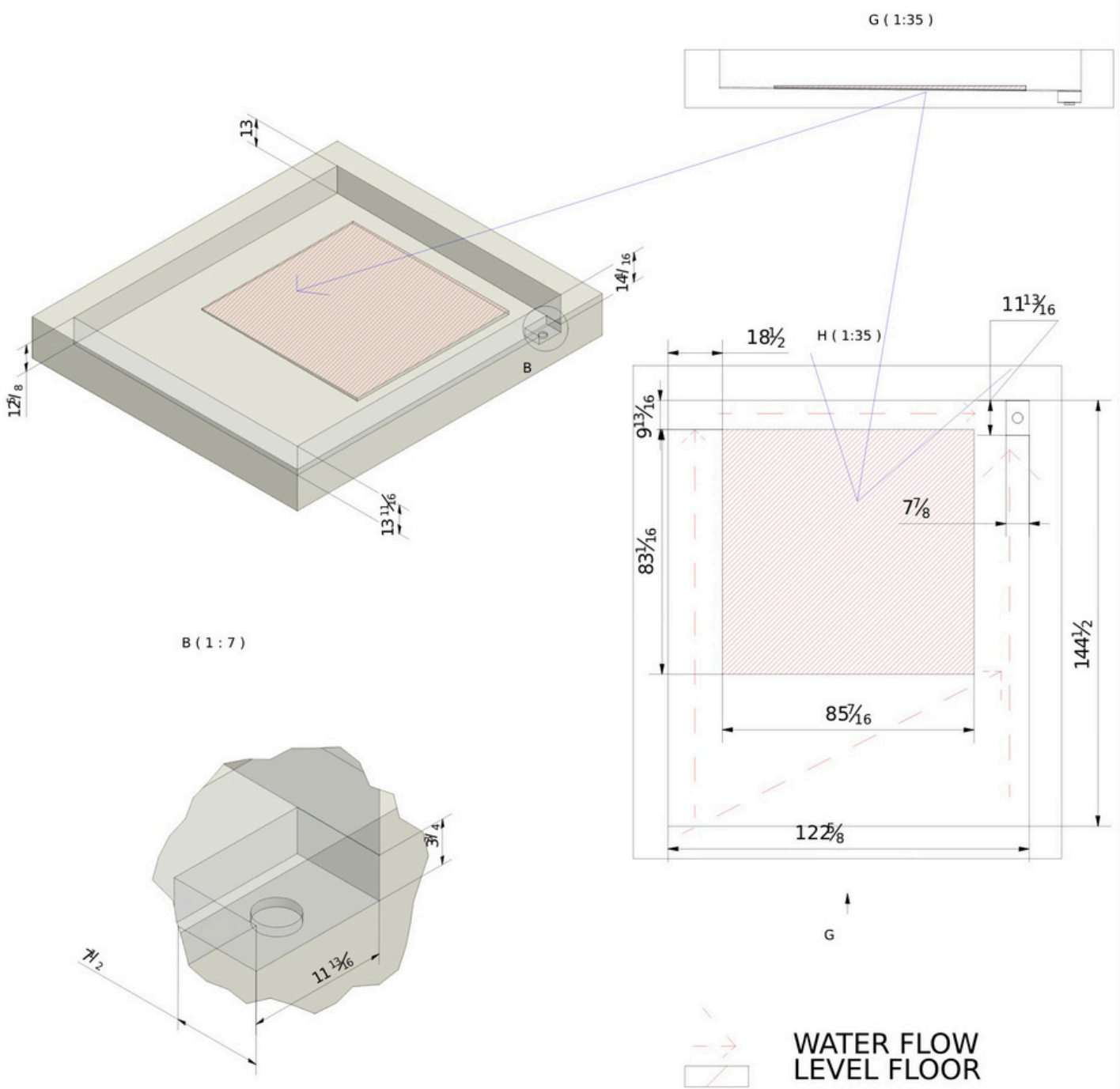
MWS715 - under floor






MWS715 - under floor

**NOTE: CONSTRUCTION AND PLUMBING
WORK AT THE CUSTOMER EXPENSE**



MWS715 - table

TABLE	DESCRIPTION	HEIGHT
A1	Hose connection to clean the equipment/: 3/4"	39" 3/4
A2	Hot Water Inlet: 3/4" 140°F Water hardness: 5 to 10°FH Particles less than: 50μ Inlet Pressure: 2 to 3 Bar	39" 3/4
E1	Drain Pipe: 2" Minimum flow: 26US gal/min Temperature up to: 194°F	3" 1/8
E2	Drain Pipe: 1" 5/8	3" 7/8
Ex1	Exhaustion pipe: 7"1/8 - 825 cfm	97"
T3 	208-240V 3P+ PE End of Cable 9ft 3x50 + PE with fuse class J 150A + differential breaker 30mA Class F	104" 5/8
	440-480V 3P+ PE End of Cable 9ft 3x25 + PE with fuse class J 80A+ differential breaker 30mA Class F	104" 5/8

 **MULTI
WASHER**

somengil.com

SOMENGIL

331-979-2013

info@zayyden.com