

Spec Sheet MWS300

Short Description

- > IP55 protection
- > Warewashing cabinet machine
- > AISI 304 Stainless Steel construction
- > 20 washing programs customizable in all parameters (time, washing pressure, wash/rinse cycles)
- > Multiwasher system to wash different types of objects
- > Tailor made trolleys designed on objects specifications
- > Touch Screen Controller and emergency button switch
- > High Pressure Washing Pump, up to 180 PSI
- > Washing temperature up to 176 °F
- > Rinsing temperature up to 194 °F

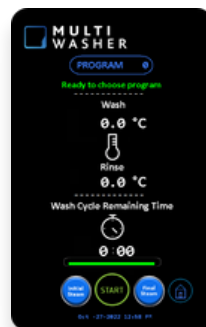


Options

- | | | |
|-------------------------------|------------------------------------|----------------------------|
| > SPINNING DRYER SYSTEM | > AUTOMATIC WATER TANK REPLACEMENT | > EXTRA HMI |
| > DIAPHRAGM RINSE DOSING PUMP | > QUIMICAL LEVEL DETECTION | > REINFORCEMENT PLATE KIT |
| > PRESSURE VARIATION SYSTEM | > STEAM HEATING | > CUSTOMIZED INTERNAL CAGE |
| > EXTERNAL FILTER SYSTEM | > EXTRA DOOR | > KIT CATERING |



Multi Products Washing



Up to 20 Personalized Programs



Tailor-Made Trolleys



Data Sheet

MWS300

TECHNICAL FEATURES

	ELECTRIC
VOLTAGE/FLA/FREQUENCY	208-240V 90.7A 440-480V 42.5A 3PH 60Hz
TOTAL POWER [HP]	41.1
TOTAL POWER (WITH INVERTER) [HP]	57.4
NET WEIGHT [lbs]	2735
GROSS WEIGHT [lbs]	3725
EXTERNAL MEASURES (WxDxH)[INCHES]	72 5/8" x 55 1/8" x 105 1/2"
INTERNAL MEASURES (WxDxH)[INCHES]	31 1/2" x 26 3/4" x 78"

WASHING DATA

TANK [Gal]	53
TANK HEATING POWER [HP]	16.3
TANK FILLING TIME [43 PSI PRESSURE] [min]	13
WASH PUMP POWER [HP]	15
TANK WASH TEMPERATURE [°F]	120-176
WASHING PRESSURE [PSI]	180
WASH PUMP FLOW [Gal/min]	100

RINSE DATA

BOILER VOLUME [Gal]	5.3
BOILER HEATING POWER [HP]	24.5
RINSE PUMP POWER [HP]	0.59
RINSE TEMPERATURE [°F]	194
RINSE PRESSURE [PSI]	43
RINSE PUMP FLOW [Gal]	4.22
WATER CONSUMPTION BY CYCLE (30s RINSE)[Gal]	2.11

SPINNING DATA

ROTARY BASKET MOTOR POWER [HP]	1
SPINNING SPEED	VARIABLE

EXHAUST DATA

EXHAUST MOTOR POWER [HP]	0.6
STEAM EXHAUST FLOW [cfm]	825

Standard Features

MWS300

OVERVIEW:

> Benchmark shows that under standard scenarios of correct equipment application/use, it is possible to save up to:

- 2/3 less water;
- 70% less detergent;
- 50% energy usage;



> Wash cycle up to 176 °F



> Rinse cycle up to 194 °F

> Dual heat rinse boosters

> Pump and spray nozzle system up to 180 PSI



> Integrated rinse pump system

> Internal water filter system

> AISI Stainless steel construction

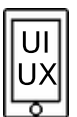


> Double insulated cabinet for heat and sound



> Ergonomic door handle

> Intuitive 7" touch screen



> User friendly and upgradable interface

> Predefined or fully customizable cleaning cycle parameters

> Remote monitoring and service

> Automatic chemical dosing



> Industrial chemical pumps for detergent & rinse aid (rinse aid - optional)

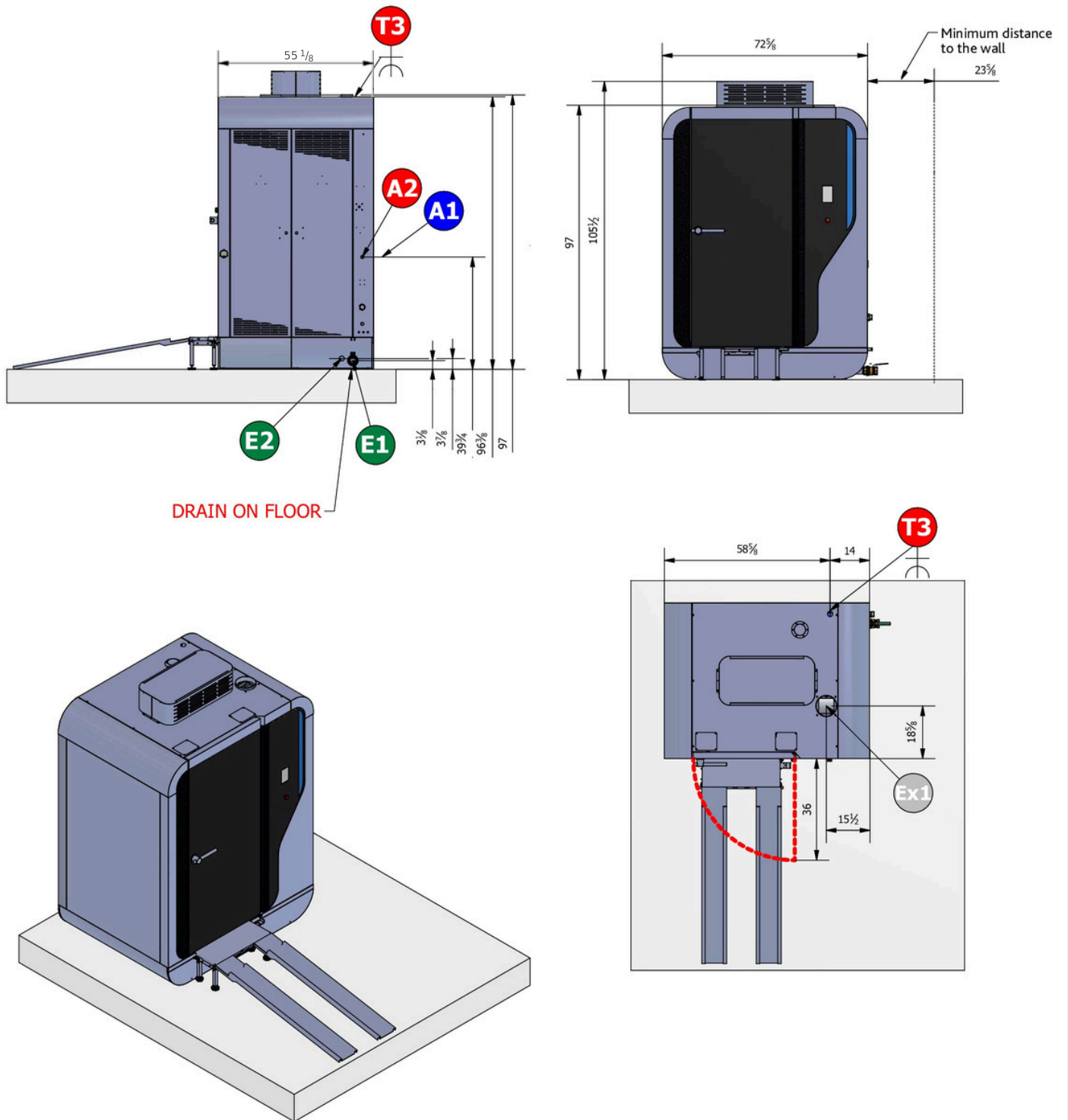
> Emergency stop switch



> Two easily removable doors for convenient access to components for service

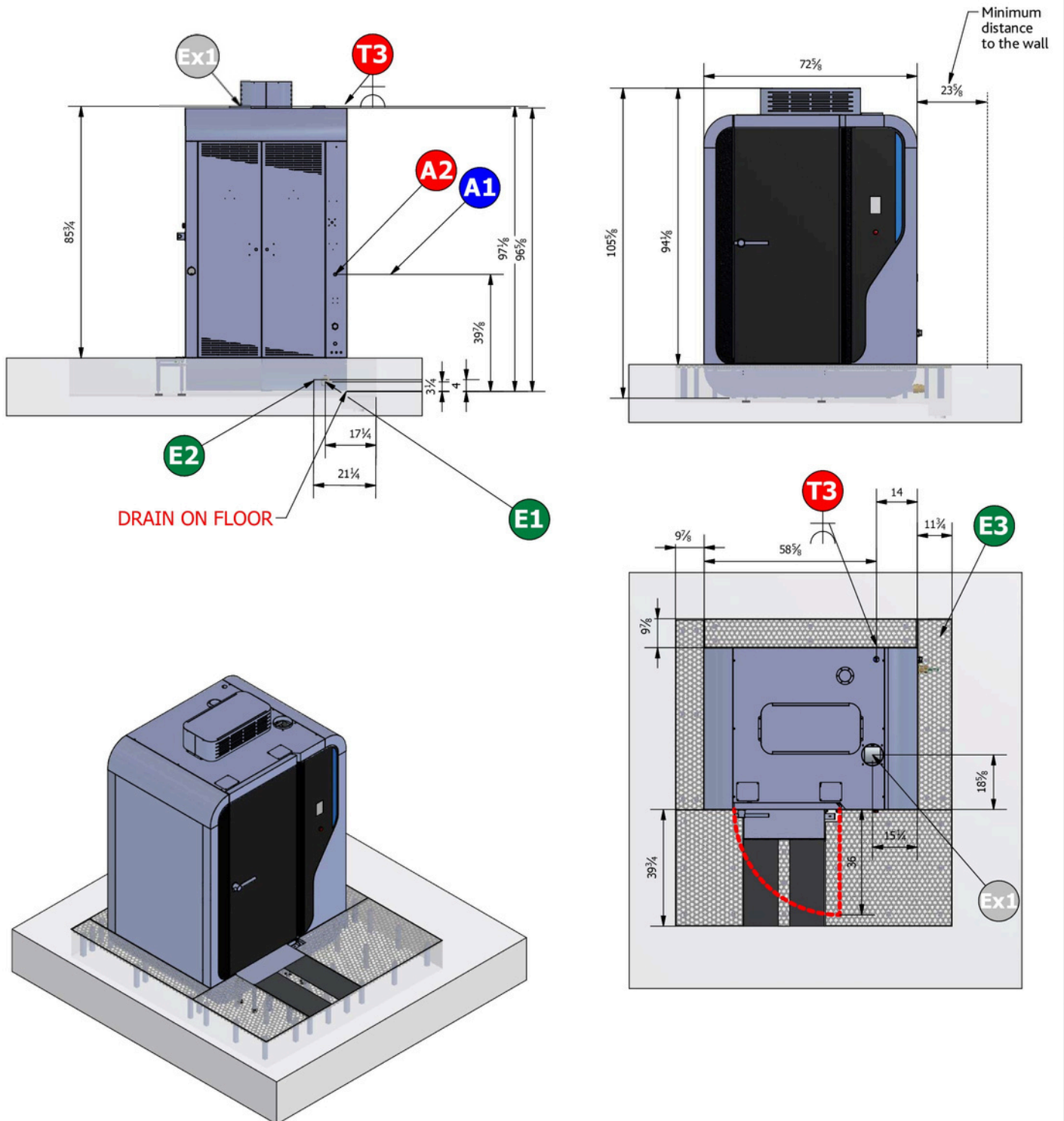


MWS300 - on floor





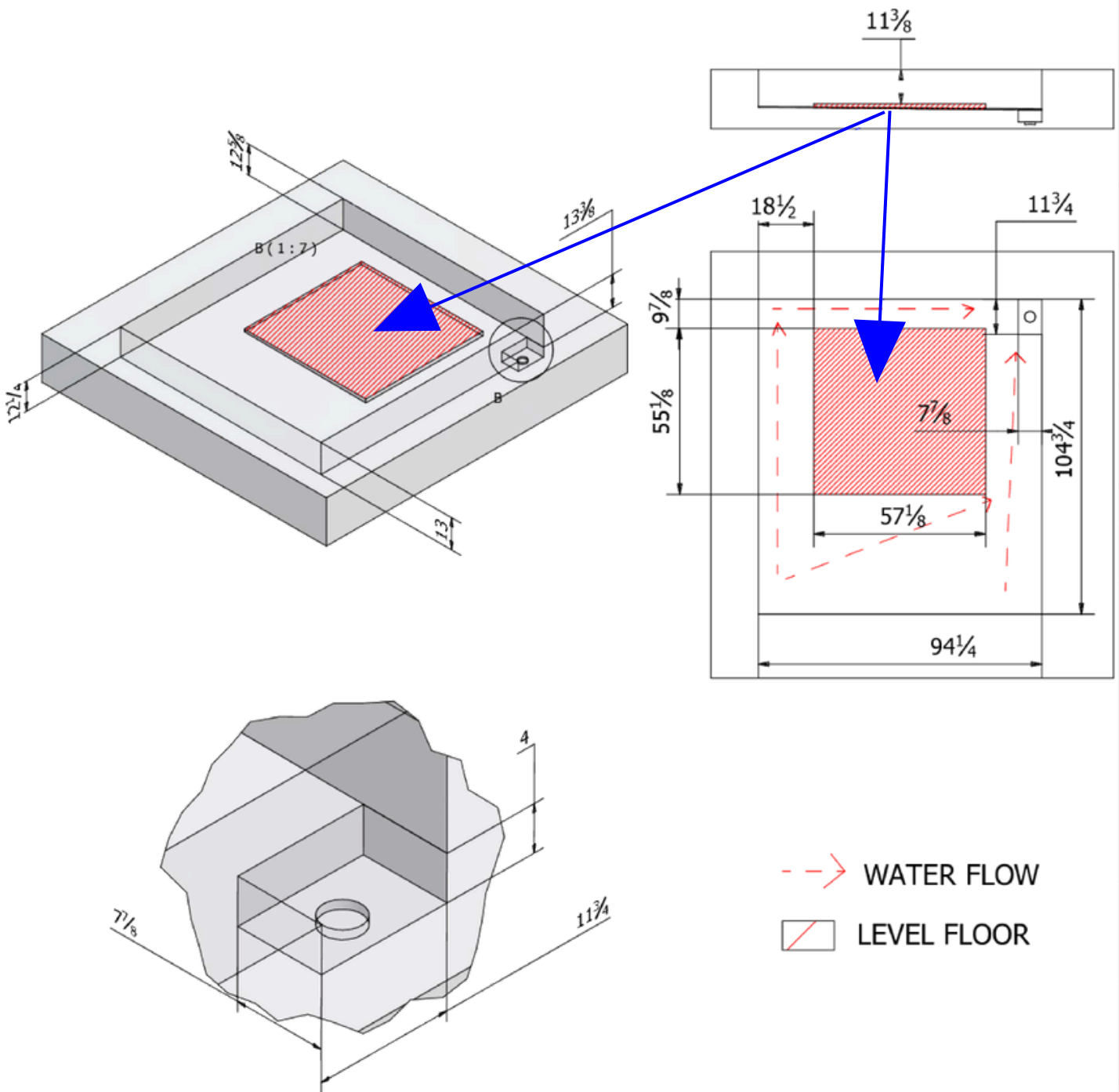
MWS300 - under floor






MWS300 - under floor

**NOTE: CONSTRUCTION AND PLUMBING
WORK AT THE CUSTOMER EXPENSE**





MWS300 - table

TABLE	DESCRIPTION	HEIGHT
A1	Hose connection to clean the equipment: 3/4"	39" 3/4
A2	Hot Water Inlet: 3/4" 140°F Water hardness: 5 to 10°FH Particles less than: 50µ Inlet Pressure: 2 to 3 Bar	39" 3/4
E1	Drain Pipe: 2" Minimum flow: 26US gal/min Temperature up to: 194°F	3" 1/8
E2	Drain Pipe: 1" 5/8	3" 7/8
Ex1	Exhaustion pipe: 7"1/8 - 825 cfm	97"
T3 	208-240V 3P+ PE End of Cable 9ft 3x35 + PE with fuse class J 100A + differential breaker 30mA Class F	96" 3/8
	440-480V 3P+ PE End of Cable 9ft 3x16 + PE with fuse class J 50A + differential breaker 30mA Class F	96" 3/8

 **MULTI
WASHER**

somengil.com

SOMENGIL

331-979-2013

info@zayyden.com