

PROJECT CARIBOU

Campaign Summary

The Challenge

The vast landscape of Alaska and Yukon Territory is both breathtaking and heartbreaking. Majestic mountains, endless skies, and shimmering Northern Lights conceal a deeper darkness that many never see. Across Alaska and Northern Canada, hundreds of small villages—most with fewer than 1,000 people—remain largely untouched by the life-changing power of the Gospel. Many have no established evangelical church, no regular Bible study, and no full-time ministry worker. The isolation here is not only geographical, but also deeply spiritual. Rates of depression, substance abuse, suicide, and family brokenness are heartbreakingly high.

In regional “hub” communities—towns like Dillingham, Kotzebue, and Bethel—small churches and faithful pastors shine as lights in the darkness. Yet they long for partners who can help them carry hope to surrounding villages.

SEND North exists to multiply those lights so that every village—no matter how remote—might experience the transforming love of Christ.

The Vision: Project Caribou

Mirroring the movement of caribou—who endure some of the harshest conditions in the North by drawing strength from the herd—Project Caribou is a bold initiative to establish ministry hubs in key northern communities strategically positioned near the most isolated villages. From each hub, missionary teams will partner with local churches to disciple youth, strengthen families, and extend a faithful Gospel presence into villages that are often isolated from the Body of Christ.



Each hub team will include:

- Long-term leaders providing stability and strategy
- Youth and family workers investing in the next generation
- Co-vocational workers creating natural connections in the community
- Short-term missionaries gaining hands-on ministry experience

Together, these teams will mobilize God's people, engage the unreached, and establish reproducing churches.

Our goal is to launch three hubs by 2030, beginning in Dillingham, Alaska.

How Project Caribou Works

Each ministry hub serves as a stable base of operations—a place where missionaries can live among the community, build trust, and anchor long-term ministry. From this foundation, teams receive ongoing mentorship and hands-on training, helping short-term workers mature into seasoned, long-term missionaries who understand the hard realities of northern life and ministry.

These hubs naturally become centers of encouragement and partnership for local churches, offering support to pastors and lay leaders who often feel isolated and stretched thin. Working side by side, missionaries and local believers extend ministry outward—traveling to nearby villages, visiting families, discipling youth, and carrying the hope of Christ into places where very few vibrant, Gospel-proclaiming churches exist.

Each hub has direct access to **8-10 surrounding villages, representing thousands of people** who may have little or no permanent Gospel witness.

Over time, the hub becomes a catalyst—nurturing new indigenous leaders, strengthening families, and establishing reproducing ministries that take root in the community itself. The impact multiplies as local believers begin reaching their own neighboring villages,

SEND North has demonstrated the effectiveness of this type of ministry model throughout our history—in places like Glenallen, Naknek, and Galena.

Financial Support Needed

Project Caribou requires a catalytic investment of **\$1.5 million** that will establish three permanent hubs equipped to reach over 25 villages. This investment includes:

- **Hub Housing** – \$370,000 per hub for property purchase or long-term lease for our short-term missionaries staying less than a year. This is a critical investment as proximity and presence is necessary for long-term engagement; yet the high cost and limited supply of housing is a barrier to gospel outreach.
- **Ministry Vehicles & Transport** – \$43,500 per hub (vehicle purchase & shipping).
- **Missionary Care & Leadership Visits** – \$8,500 per hub.
- **Vision & Scouting Trips** – \$13,000 combined to explore future hub sites and assess the spiritual climate and opportunities for gospel engagement.

SEND North has already committed **\$450,000** toward this effort. We are inviting partners like you to help raise the remaining **\$1,050,000** to bring this vision to life.

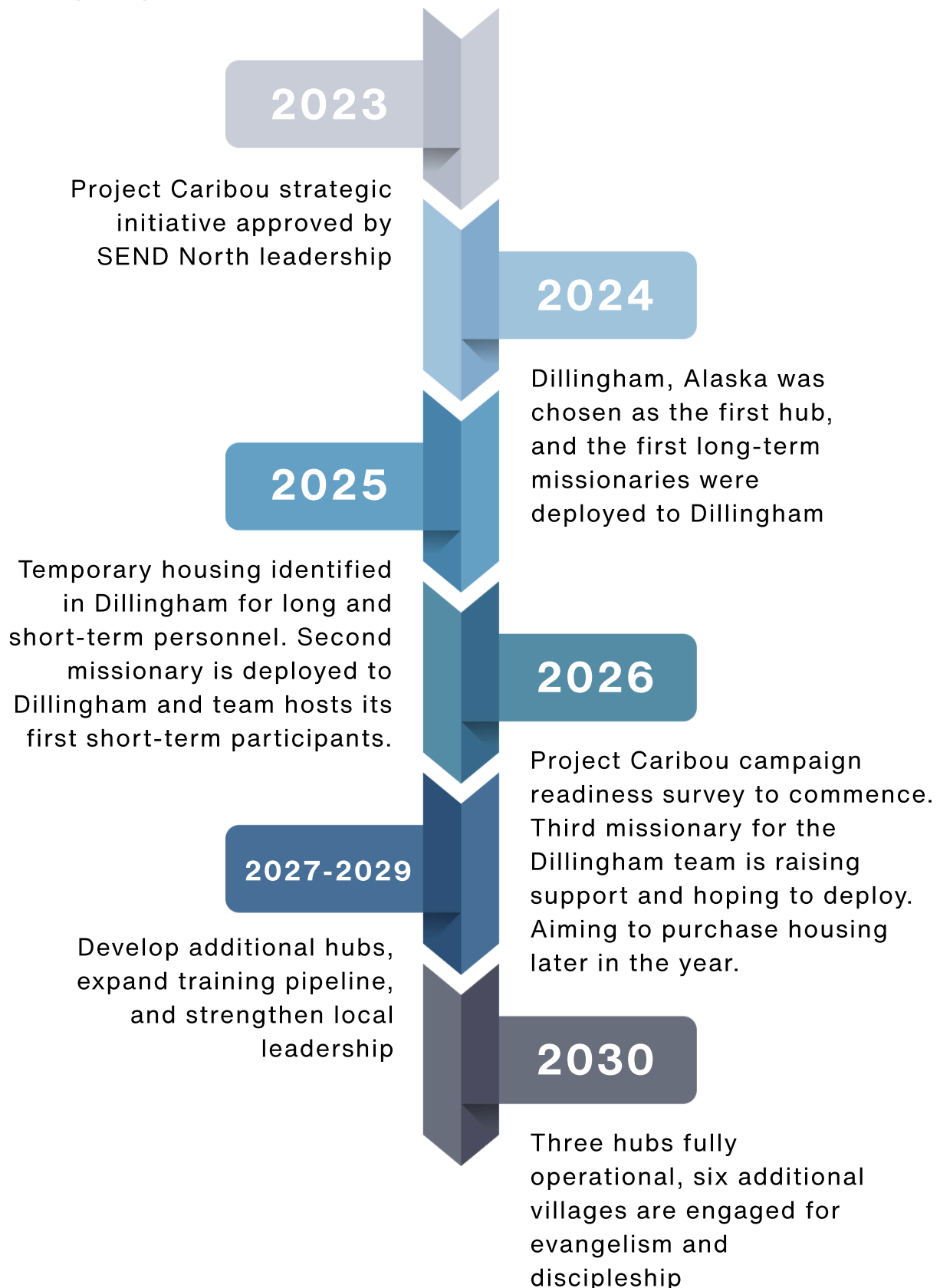
Why This Matters

Without workers living in the villages, the church struggles to grow, and people remain trapped in cycles of despair. With Project Caribou, we are providing resources and teams to strengthen the church and extend hope to remote and isolated communities.

By giving to Project Caribou, you are:

- Extending the reach of the Gospel into spiritually dark places
- Strengthening indigenous believers and local churches
- Raising up the next generation of missionaries
- Making a lasting difference for youth, families, and entire communities struggling to break the cycle of despair and hopelessness

Timeline





Project Caribou is not just a project—it's a movement of hope into some of the most unreached places in North America. We are seeking kingdom partners who will pray, give, and champion this vision.

As a friend and partner of SEND North, we invite you to help us reach our goal to bring the light of Christ to the villages of the North.

By investing in Project Caribou, you can impact lives and communities for eternity. Your contribution, no matter the size, will make an incredible difference. For those wishing to leave a legacy, SEND North offers naming opportunities for gifts of extraordinary generosity.

Get Involved

To join us or for more information, please contact our Director of Partnerships, Steven Hall, at shall@send.org or (907)320.0158.

In the vast beauty of the North, light and darkness stand side by side. Together, we can ensure that the light wins. Your partnership in Project Caribou will place missionaries where they are needed most, equip local believers to lead, and open doors for the Gospel in places where it has rarely been heard.

Will you join us?

About SEND International

SEND International is an interdenominational, multinational Christian mission organization with missionaries in more than 30 areas of Asia, Europe, Eurasia, and North America. Our mission is to mobilize God's people and engage the unreached in order to establish reproducing churches.

For more than 80 years, SEND International has been on the frontlines of sending workers cross-culturally from around the world to proclaim the gospel of Jesus and be His presence, demonstrating His love, mercy, and grace in some of the hardest places. Our core activities include church planting, discipleship, personal/small group evangelism, theological education, leadership development, and tentmaking.