

BANK GUIDE

SWEDBANK

1

ELIGIBILITY

- Remote opening is available only if you have a Latvian-issued ID But in person if one has a temporary resident permit.
- 16 years of age
- Have eID



2

COST

- €1.70/mo (includes debit card + 10 payments to other banks)
- 200- 250€ initial cost for verification of documents issued out of Latvia, and is non-refundable.)



3

AVAILABILITY

- Wide branch and ATM network across Latvia and the Baltic
- Have a branch at Kuldigas iela 25A Ventspils, LV-3601
- Got an ATM right across the University at the shop Citro, Tobago and around the city



4

PERKS

- Easy-to-use mobile app, student-friendly account, a Good reputation and customer-friendly customer service
- They also offer ISIC which is internationally recognized and offers lots of discounts



5

INFO LINKS

- <https://www.swedbank.lv/private/d2d/accounts/becomeOurCustomer?language=ENG>
- <https://www.swedbank.lv/private/d2d/accounts/pricingAgreement?language=ENG>
- <https://www.swedbank.lv/private/pricelist>



BANK GUIDE

SEB BANK

1

ELIGIBILITY

- Remote opening is available only if you have a Latvian-issued ID, but in person if one has a temporary resident permit.
- Free daily plan for clients 7-25years old



2

COST

- €3/mo for daily plan
- 250 - 350€ initial cost for verification of documents issued out of Latvia, and is non-refundable.)
- 15€/mo service fee for people holding ID issued outside EEA, with some exceptions



3

AVAILABILITY

- No local branch, but the nearest branch is in Liepaja.
- Got an ATM right across the University at the shop Citro, Tobago, etc



4

PERKS

- Daily plan is free until age 26
- Cash withdrawal up to €750/mo free at SEB ATMs in the Baltics and Swedbank ATMs in Latvia
- SEPA transfers ≤ €15k are executed instantly where supported



5

INFO LINKS

- <https://www.seb.lv/en/private/become-customer/become-customer?>
- <https://www.seb.lv/en/changes-seb-price-list-2022-september-1>



BANK GUIDE

CITADELE

1

ELIGIBILITY

- Remote opening is available only if you have a Latvian-issued ID But in person if one has a temporary resident permit.
- Have an eID and enrolled in a Latvian University



2

COST

- €2.70/mo But free for ages 7-21.
- 200- 350€ initial cost for verification of documents issued out of Latvia, and is non-refundable.)
- Free instant SEPA transactions



3

AVAILABILITY

- Wide branch and ATM network across Latvia and the Baltic
- Branch not found in Ventspils, but in Liepaja
- Got an ATM right across the University at the shop Citro



4

PERKS

- Offers cashback and discounts for card usage.
- Flexible packages and accounts for youth and students.
- Free Instant transfers



5

INFO LINKS

- <https://www.citadele.lv/en/private/customer/>
- https://www.citadele.lv/storage/app/pdf/public/lv/main_01_06_2025_en.pdf
- <https://www.citadele.lv/en/private/fees/?category=accounts&table=account-opening>



BANK GUIDE

LUMINOR

1

ELIGIBILITY

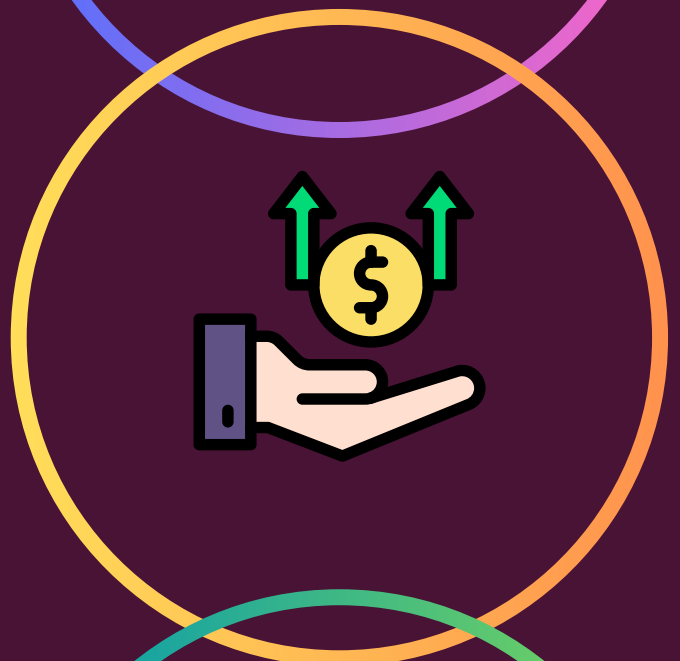
- Remote opening is available only if you have a Latvian-issued ID But in person if one has a temporary resident permit.
- 16 years of age
- Have eID and enrolled in a Latvian University



2

COST

- €2.70/mo But free for ages 7-21.
- 200- 350€ initial cost for verification of documents issued out of Latvia, and is non-refundable.)
- Free instant SEPA transactions



3

AVAILABILITY

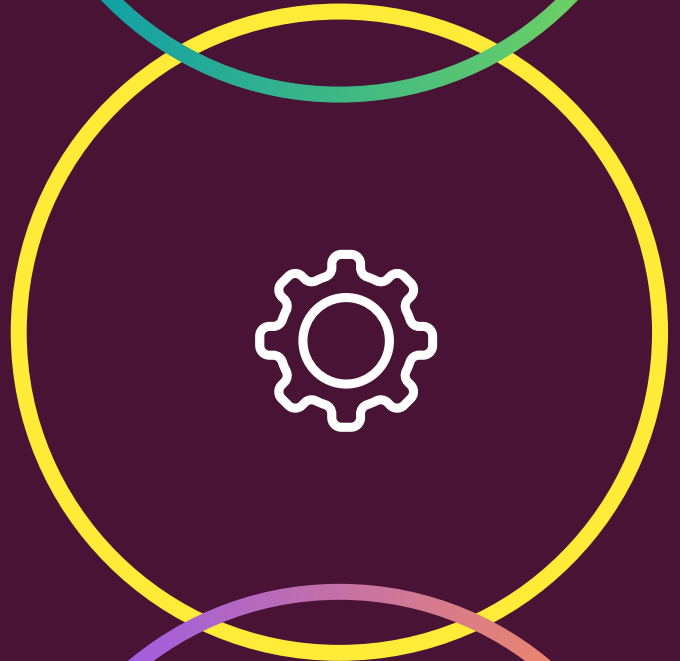
- Branch not found in Ventspils
- Luminor customers in Latvia can also withdraw at Citadele/SEB/Swedbank ATMs under Luminor's shared free-cash policy



4

PERKS

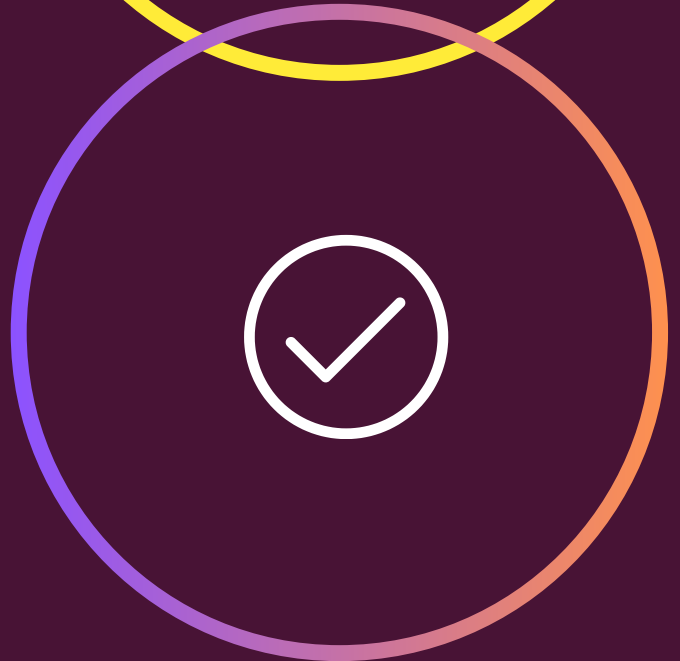
- Supports Apple/Google Pay; remote debit-card setup and standard mobile/online banking.
- Outgoing SEPA Instant up to €50k, incoming up to €100k (24/7)



5

INFO LINKS

- <https://www.luminor.lv/en/news/price-list-changes-private-customers-early-2025>
- https://www.luminor.lv/sites/default/files/pricelist_pdf/pricelist_private_20250701_20261231_en.pdf



BANK GUIDE

BluOr Bank

1

ELIGIBILITY

- Remote opening is available only if you have a Latvian-issued ID but in person if one has a temporary resident permit.
- Free for LV/EU/EEA/UK/CH with a valid passport



2

COST

- Free €500/mo ATM withdrawals then fees (depends on card tier)
- 200- 250€ initial cost for verification of documents issued out of Latvia, and is non-refundable.)



3

AVAILABILITY

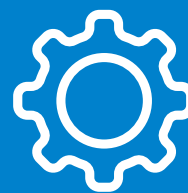
- No branch in Ventspils
- Uses other banks' ATMs with BluOr cards¹
- Remote onboarding available for LV/EU/EEA/UK/CH residents (video/e-signature), so you can start from Ventspils



4

PERKS

- Open an account remotely if you're from LV/EU/EEA/UK/CH; helpful for students not in Latvia
- Personal account supports instant payments and currency exchange in-app/online



5

OTHERS

- <https://www.bluorbank.lv/latvija/en/remote-identification>
- <https://www.bluorbank.lv/latvija/en/pricelist?>



BANK GUIDE

Revolut

1

ELIGIBILITY

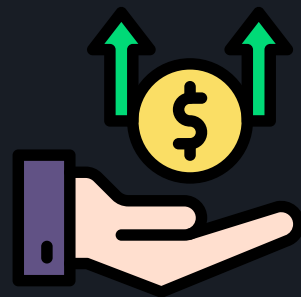
- Fully app-based digital onboarding.
- A mobile number
- A valid form of identification (e.g., passport, national ID card, or driving licence)
- A valid email address
- Personal details, including your current address



2

COST

- Plan-based, but the basic plan is free.
- No verification cost
- 7€ card delivery fee



3

AVAILABILITY

- Fully online
- Good for students or travelers who need multi-currency, instant EUR transfers, and quick setup without a branch.



4

PERKS

- Instant euro transfers
- Hold/exchange 25–30+ currencies, hence you spend in local currencies when traveling



5

INFO LINKS

- <https://www.revolut.com/>



BANK GUIDE

Other options

1

WISE

- Open an account in the app
- Wise card works at local ATMs with 2 free withdrawals up to €200/mo, then fees.
- Instant transfer



2

PAYSERA

- App account + Visa card from the app
- SEPA Instant transfers 24/7
- Up to 30 free SEPA transfers/month for private clients in SEPA countries; then small fees.



3

N26

- Fully mobile bank available to Latvian residents
- free/paid plans
- Instant EUR transfers
- Apple/Google Pay



4

MONESE

- Quick in-app signup
- Multi-currency account with IBAN
- Good for spending/travel



5

INFO LINKS

- <https://wise.com/>
- <https://www.paysera.lv/v2/lv-LV/paysera-konts>
- <https://n26.com/en-eu>
- <https://www.monese.com/?lng=en>

