



COMPUADOPT®

Providing Technology Access and Education
To Underserved Youth

**ACCESS
OPPORTUNITY**
CONNECTING
COMMUNITIES
2020 ANNUAL REPORT



TABLE OF CONTENTS

| | |
|---------|--|
| 2 | Message from the Board Chair and the CEO |
| 3 | Highlights of 2020 |
| 4 | Impact and Reach |
| 5 | Program Spotlight |
| 6 | The Power of Partnerships |
| 7 | Board Spotlight |
| 8 | Environmental Sustainability |
| 9 | Up Ahead |
| 10 - 17 | Acknowledgments |
| 18 | Financials |

MESSAGE FROM THE CEO AND BOARD CHAIR

Dear Friends,

Stratospheric growth, remarkable generosity, outstanding commitment, and a veritable roller-coaster of opportunity. These statements only begin to touch on what 2020 meant for Comp-U-Dopt. While we must acknowledge the devastating impact that the pandemic has had on our world, we must also recognize the unprecedented opportunity it presented our organization. In 2020 we were able to leverage our 13 years of experience in closing the digital divide and serve nearly 20,000 families by the close of the year, ten times more than we served in 2019.

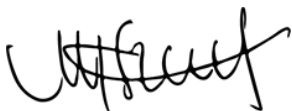
The cost efficiency and replicability of our computer distribution model also allowed us to realize our dream of national expansion, growing from service in Houston and Galveston to reach ten cities across the United States. We are now proudly delivering technology access and education in Chicago, Covington, Corpus Christi, Dallas, Fort Worth, Galveston, Houston, Los Angeles, Washington D.C., and New Orleans. With the recognition of our success in national media, including being featured on Jimmy Fallon and the Today Show, we are continuing expansion to locations like Lake Charles, Long Island, and communities in the Eagle Ford and Permian Basin.

While our geographic growth was tremendous and incredibly exciting, we also re-engineered all of our education programs. With the option to be run virtually, they still maintain the same high engagement experience we know our students love. Students become astronauts, creating their own planets in augmented reality and "de-tech-tives" who solve an art heist while still building the same high-demand skills aligned to careers and industries that offer opportunities to participate in the economic mainstream.

The icing on the proverbial cake was the realization of our capital campaign project in Houston, a dream three years in the making. We cannot wait to welcome students back into our new TC Energy Tech Hub classroom as soon as it is safe to do so.

2020 offered many challenges and opportunities, but as we enter 2021, we are filled with passion, motivation, and excitement to continue to work with individuals like you to deliver a digital equity solution which solves the digital divide. You have been a critical part of our success. Our donors, community partners, and champions enable our pursuit of a brighter future for all youth, regardless of their economic situation. We hope you know that in what was a difficult time for many, your support, generosity, and commitment to your community provided a ray of light for the many families served.

Thank you for your support.



Megan Steckly
CEO



John T. Campbell
Board Chair

A DEFINING YEAR

NAVIGATING COVID-19

Although we have been providing technology access and education since 2007, COVID-19 provided us an opportunity to scale our computer distribution program and serve more youth and families than ever before.

At a time of uncertainty, with the world locked down, we responded the only way we know how-to serve. We quickly evaluated our resources and how we could effectively scale to not only serve the Houston area but the entire country.

As we look back over 2020, we would like to share some of the accomplishments we are most proud of:

- Expanded our geographic footprint to include 10 cities
- Re-engineered our computer distribution program model to be more responsive and efficient and meet the needs of families during the pandemic
- Obtained Cisco accreditation and launched a new education program leveraging internationally recognized curriculum
- Grew our partnerships and expanded our reach
- Raised both the quality of our program delivery and the devices we give out
- Redeveloped our elementary and high-school education programs to run virtually
- Provided access to technology to over 20,000 households across the US





2020 REACH

6 states

California
Illinois
Kentucky
Louisiana
Texas
District of Columbia



In 2020 we expanded our reach to serve more youth and families than ever before.

10 cities

Chicago
Corpus Christi
Covington
Dallas
Forth Worth
Galveston
Houston
Los Angeles
New Orleans
Washington, D.C.



2020 IMPACT

My son's birthday is July 12th. I told his dad, I'm going to try to get one of these computers and we can wrap it up for his birthday because it will allow him to do his schoolwork and we can't afford one.

He has been getting phone calls from teachers because he wasn't able to do his work from home during the quarantine. We told the school, you have to understand, not everyone has a computer. Without a computer, you can forget it. Schoolwork is just not going to happen. They're already three steps behind and this just throws them back 10 more. It's not fair, that just because we can't afford a computer he's behind.

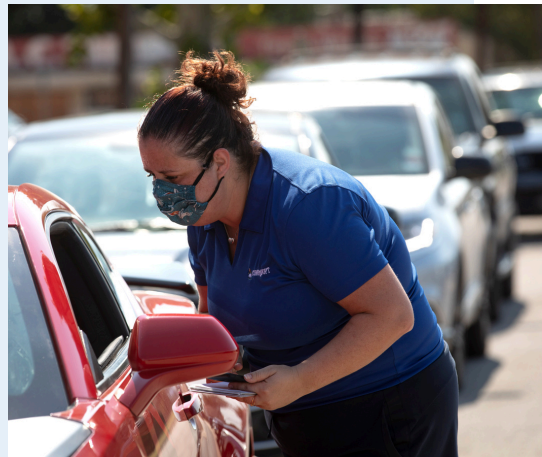
We're very very grateful for this. He's going to be so excited. His summer school program starts on Monday so we're going to wrap this up tonight and give it to him early for his birthday tomorrow (Sunday) so he has it ready for school.

We wouldn't have been able to give him anything for his birthday this year if it wasn't for this. Thank you so much.

--Computer Recipient



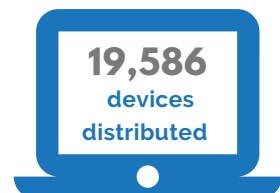
PROGRAM SPOTLIGHT: DRIVE-THRU COMPUTER DISTRIBUTIONS



An unprecedented number of youth and families were served through our drive thru computer distribution program in 2020.

Since our inception we have been distributing reconditioned corporate computers to families without access to devices at home. Device access, like many other disparities, was highlighted by the COVID-19 pandemic. In response to the pandemic, we shifted our model to accommodate a drive-thru distribution. This shift allowed us to serve the community while following CDC guidelines, stringent safety protocols, and social distancing. As always, all computers distributed were free for the recipient and included 2-years of free tech support.

Access to devices provides more than just an opportunity for e-learning. It helps the success and future of the whole family. With a computer in the home, parents can search for jobs and pay bills online. Family members can attend telehealth appointments. Relatives can be together, virtually, for the holidays. The ultimate benefit of technology access is the facilitation of connection.





THE POWER OF PARTNERSHIPS

Vistra, TXU Energy, and Dynegy power Comp-U-Dopt's programs
across Dallas, Fort Worth, and Chicago

There is no doubt that 2020 was a challenging year for everyone, especially when it came to internet connectivity and access to online learning opportunities for students across the nation. Now, more than ever, technology is at the forefront of everything we do, and yet access to technology continues to be a challenge for 46 percent of low-income households. As we faced the COVID-19 pandemic, we became even more focused on our intentions to bridge the digital divide and build the future we believe in – to eliminate limited access to computers, facilitate growth in technical and digital literacy skills, and support the future of youth in our communities.

Gratefully, our partnership with Vistra – a leading, Fortune 275 integrated retail electricity and power generation company – and its family of companies, including electricity providers TXU Energy and Dynegy, were instrumental in helping Comp-U-Dopt exceed our goals in 2020. Through a commitment to support equity in education and provide critical online learning resources to those in need, Vistra proudly donated \$230,000 to fund nearly 2,000 refurbished, free-of-charge laptops for families without a computer for the 2020-2021 school year in Chicago, Dallas, and Fort Worth. With the support of all of our partners in 2020, Comp-U-Dopt donated over 19,000 laptops and computers to families in underserved communities across the nation.

"Vistra recognizes that the pandemic has disproportionately impacted low-income Americans, including those with school-age children for whom buying the bare essentials is challenging enough – to say nothing of bridging the digital divide. The need to do so is pressing: students without a computer are at risk of losing months of educational opportunity compared to peers with the proper equipment," said Curt Morgan, Vistra chief executive officer and Comp-U-Dopt board of directors' member. "Comp-U-Dopt's innovative programs helps ensure those children do not fall behind and are positioned for success despite the obstacles. We're proud to support their work and look forward to continuing to do so well into the future."

Comp-U-Dopt's partnerships help provide students and families with access to technology, STEM training to see a new path forward, and motivation to discover and explore different industries and careers. In addition, Comp-U-Dopt and its partners are proud to support sustainability best practices by refurbishing laptops, keeping them out of landfills, and giving them a second life.

Together, with our partners, we unite around one thing – building a future we can believe in, where all students have equal access to technology and education. We are grateful and thankful to work with partners, like Vistra, TXU Energy, and Dynegy, who live by our mission statement and are helping to effect change with a deep-seated sense of purpose.

WHY I CHOOSE TO SERVE



Kimberly Penn serves as president at both Professor Drones and Webtropolis and chief strategist of Women and Drones. Penn brands herself as a tech maven and founded a boutique technology consulting firm (Webtropolis) 28 years ago. In addition, Penn has earned several local, state, and national teaching awards at the collegiate level. She also serves on Comp-U-Dopt's National Board of Directors and as Co-Chair of the Houston and Galveston Advisory Board.

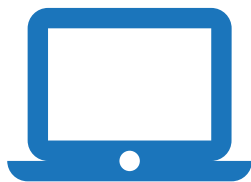
"I became familiar with Comp-U-Dopt through an intern that was involved with Comp-U-Dopt. When I learned more about the organization, I thought it was a game-changer for getting devices in the hands of kids," said Penn. "The mission is deliberate and impactful".

With 46% of low-income households lacking access to a computer at home, many youth have fallen further behind in school due to the COVID-19 pandemic. As a lifelong learner, Penn understands the importance of technology access, education, and connectivity, particularly for youth, "Technology is not a luxury, it is an absolute necessity".

A trailblazer for women and children, Penn brings her knowledge and expertise to our organization, helping to bridge the digital divide. We are so thankful for our board members and their unwavering support and dedication to our mission.

SINCE 2007:

students have gained confidence in technology through participation in technology access or education programs

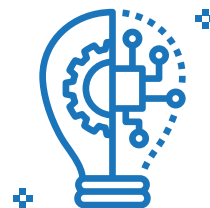


35,093

youth and families have received free, refurbished devices and 2-years of technology support

107,598

hours of technology education have helped expand opportunities for youth served





331 TONS OF EQUIPMENT

Each year 6.9 million tons of e-waste are produced in the US and 80% of e-waste ends up in landfills, leaching toxic metals into the environment.

Since Comp-U-Dopt was founded in 2007, we have kept over **331** tons of waste out of those landfills through our programs and recycling partnerships. In 2020 alone we recycled or reused over **211** tons of equipment.

By receiving donated retired equipment, refurbishing it, and giving it a second life in the home of a student or family, we have created a unique and innovative loop for improved environmental sustainability while giving youth the tools they need for a brighter future.

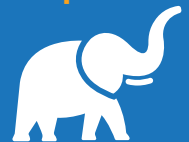
To learn more about how to donate equipment, visit us at www.compudopt.org/donate.

331 TONS IS THE EQUIVALENT OF:

236.4
cars



165.5
elephants



More than an entire Boeing 747!





UP AHEAD

2021 and beyond



Complete our program offerings to firmly address all three legs of digital divide to promote digital equity

To provide affordable and sustainable connectivity solutions direct to our program recipients.



Broaden our program offerings for opportunity youth

To further serve youth aged 16-24 who are not in school and not employed and offer these students alternative pathways to college and/or the economic mainstream through internationally recognized training curriculums. This is a demographic group which has ballooned as a result of COVID 19 - from 5M nationally to 18M estimated now across the country.



Continue to expand our geographic reach

To address the lack of a sustainable solution to the digital divide with the goal of ensuring that all students, regardless of location, have access to the tools they need to be successful



Advance our distribution and program delivery model

To include service to rural communities and provide access to hardware, connectivity, and digital literacy programs which upskill communities and lead to brighter futures and opportunities.



Deepen our impact and connection in our existing locations

To ensure a pathway for students to become future innovators through high quality, engaging, hands-on technology education programming for k-12 youth and continuing to innovate and enhance program engagement.

DONOR HONOR ROLL

Comp-U-Dopt is grateful to the individuals, corporations, foundations, and organizations who invest in our mission each year. We would like to acknowledge the following benefactors for their support.

\$200,000+

A Houston Philanthropic Family
Moody Foundation
New Harbor Capital
Management LP
Thrive Chicago
Vistra Energy

\$100,000 - \$199,999

A Better Chicago
Anonymous
Anonymous
City of Houston
The Guill Family Foundation
LyondellBasell
Reliant, an NRG Company
TC Energy
Why Not Foundation

\$25,000 - \$99,999

Anonymous
Anonymous
The Benevity Community Impact
Fund
The Brown Foundation
CenterPoint Energy
City Year Chicago
Communities Foundation of Texas
Crown Castle
Crown Family Philanthropies
Deshaun Watson Foundation
The Elkins Foundation
Exelon Generation

Galveston County Recovery Fund
Julian Grace Foundation
Greater Houston Community Foundation
Hess Corporation
HP
Jake and Nina Kamin Foundation
Jenny McCauley
MHA Labs
Morgan Stanley
Northwest Side Housing Center
PepsiCo Foundation
The Permanent Endowment Fund
Pin Oak Corpus Christi
Player's Coalition
Robert R. McCormick Foundations
Rockwell Fund
Schwab Charitable
Solar Turbines
Southwestern Energy
Timken Foundation of Canton

\$10,000 - \$24,999

Bay Ltd
Brit Insurance
Chris Brown
Carlyn Burton
Callon

THANK
YOU

PHILANTHROPIC
SUPPORTERS

DONOR HONOR ROLL

\$10,000 - \$24,999 cont.

John and Neda Campbell
Marian and Paul Cones
Andrew Delaney Foundation
David and Kate Dell'Osso
Rod Desroches
Virginia Dominiguez
Gallery Furniture
Gelb Family Foundation
Cynthia Guill
Scott and Mimi Harlan
H-E-B
The Houston Foundation
JP Morgan Chase
Harris and Eliza Kempner Fund
The Dorothy and Jim Kronzer
Foundation
Amber and CW McCullagh
Midstream Texas Operating LLC
Morales Memorial Foundation
Curt and Teresa Morgan
John and Talina Osha
Osha Bergman Watanabe &
Burton LLP
Ryan Palmer Foundation
TEGNA Foundation
Triple E Charitable Foundation
United Way of Lake County
Vectren Foundation, Inc.
Veritex Community Bank
Verizon
Walgreens Boots Alliance, Inc.
Chrissy Wilson
Cyvia and Melvyn Wolff Family
Foundation

\$5,000 - \$9,999

alliantgroup
Andrus Peat
Apache Industrial Services

Aspen Technology, Inc.
Johnson Bademosi
Buzz and Lisa Baker Giving Fund
Bracewell
Kevin Brady
Bob Candito
Chevron
Stephanie Don
Samuel Galambos
Julie Geisen Scheper
Genesis Energy L.P.
Anand Gomes
Matthew Grove
Albert & Ethel Herzstein Charitable
Foundation
Hillcrest Foundation
Robert Iglesias
Latham & Watkins. LLP
McCormack Baron Management, Inc.
Patrick McGannon
National Christian Foundation
Paysafe
Debbie Roff
Softchoice
Peggy Christman and James Sonnier
Technocycle
The Texas Springs Cypress Chapter
of the Links, Inc.
Willens Family Foundation

THANK
YOU

PHILANTHROPIC
SUPPORTERS

DONOR HONOR ROLL

\$1,000 - \$4,999

Jeffry Abrams
Glen Adams
AES Drilling Fluids
Alaska Community Foundation
Amegy Bank
American First National Bank
Mark Anderson
Anonymous
Greg Arbogast
Jessica Avila
Susan Baker
Adeeb Barqawi
Scott Besselman
Chase Bice
Mario Blenda
Patrick and Susan Blough
Charitable Fund
Brett Bresser
Stacy Burgess
Sandra Burley
Emily Buzzelli
Benjamin Caldwell
Steven Canner
Fernan Carpio
Thomas Chen
Chicago Learning Exchange
Jordan Chrysafidis
Steve and Lynne Clark
Flaherty Collins
Tony Coonrod
Corporate Community Relations
Council
Covenant Baptist Church
Mark Cowie
Delta Energy Consultants, LLC
The Diaz Family Fund
DocuSign
Jackie Doty
Dupre Interests LLC

First Baptist Church Cool Learning
Experience
Force PSI
Shawn Foster
Norton Rose Fulbright
Terry Gardner
Roy-Michael Gibson
Joan Glatman
Jennifer Gonzales
Google
Michael Green
Diane Gresko
The GoodCoin Foundation
Angie Halderman
Lee Hall
Halliburton (HAL)
Edward Harder
Harris County Department of
Education (HCDE)
Stephanie and Robert Harrison
Family Fund
The Harry S. & Isabel C. Cameron
Foundation
Hazard Family Foundation
Lisa H. Helper
Sara Hinkley
Ron and Kim Hinson
Huff Family Foundation
ImpactAssets
Kanika Johnson
Robert Johnson
Gregory Jordan
Kent Keith

THANK
YOU

PHILANTHROPIC
SUPPORTERS

DONOR HONOR ROLL

\$1,000 - \$4,999 cont.

| | |
|-----------------------------------|--------------------------------|
| Brad Kellett | Charles and Teri Steckly |
| Christina L. Kluth | Matthew Steele |
| Nathanael Koch | Patience R. Stern |
| Demetri Koutrouvelis | Wesley L. Story |
| Corey Leonard | Suhl Giving Fund |
| Jo Ann Levine | Catherine Syrett |
| Elaine Loiselle | Target |
| Paul Longstreth | Mark and Gerladine Tarini |
| Magnolia Oil & Gas | Tenaris |
| Daniel Mason | John and Helen Thaeler |
| Julie and Ryan Mayo | Aaron and Heidi Thiese |
| Vince McDermott | Trace Midstream Partners, LLC |
| Sarah Menendez | Anne Tucker |
| Microsoft | John Turner |
| David Miller | Twitter |
| Bruce and Janet Misamore | Ulterra |
| Jenny A. Moore | Ashlee Veit |
| Anne C. Lewis and David K. Morris | Sara Watts |
| Anne Nelson | The Diana and Conrad Weil, Jr. |
| Penelope Nelson | Family Foundation |
| Rathole Drilling Inc. | Sanford and Leslie G. Weiner |
| Michael Reade | Grant Fund |
| Greg Respivo | Nola Weinstein |
| Rhineland Foundation | Wellbenders |
| Kate E. Rickel | Brian and Suzanne Williams |
| Bryan P. Ritchey | Colleen Williams |
| Ronnie Robinett | Marvin Wilson |
| David Rosenberg | Zach Wood |
| Alexia Roy | Mark Young |
| Barbara Sasser | |
| Sasser Family Foundation Inc. | |
| Tracie Schmitt | |
| Karolyn Sexton | |
| Farrukh Shamsi | |
| Shell Oil Company Foundation | |
| David Shire | |
| Larry and Marsha Smith | |
| McKool Smith | |
| Scott Sparvero | |

THANK
YOU

PHILANTHROPIC
SUPPORTERS

DONOR HONOR ROLL

\$250 - \$999

Leontine Alkema
David Allen
Anonymous
Marie Arcos
George Behr
Scott Bends
Daniel Bish
Rochelle Bloom
Bill and Pam Boyar
BP Foundation
Jamie Brewer
Susan Bright
Diane Brown
Grant Brown
Bryan Bruner
Raymond Burek
Roberta Burroughs
Brittany Busby
Linda Calles
Iowany Castiblanco
Silver Castillo
Carla Chance
Susan Charba
Jennifer Chao
Jereann Chaney
Catherine Christen
Catherine Cockrell
Chiara Combs
Joanne Crossland
David Contreras
Glynn Crump
Jeff Davis
Douglas Dawson
Augustus DeAngelo
Colin Alexander Dempsey
Matthew Dempsey
Walter Dempsey
Anna Domask
Denise DuBard
Martha Candace DuFour
Kaia and Brian Dutler

Elizabeth Ellis
Matthew Ellsworth
Daniel Erklauer
Jason Fajkus
Jodi Fernandez
Eric Flemming
FlexSteel Pipe
Teri Fontenot
Richard Fowler
Nancy and Steve Frank
Freud-Willis Family Fund
Amelia Friedman
Garrett Gadbois
Elizabeth Garcia
Eric Goldman
Greater Horizons
Nichole and Ryan Gurney
Tom Haggard
Brad Hainer
Veronica Hannan
Pattie and Sam Harrison
Xvonne Hart
Daniel Hassert
Caris Hatfield
Isaac Hausman
Scott Hempling
Trey Hendrickson
Taysom Hill
Kathleen Hilterman
Mary Hoffman
Jeff Homer
Joseph Horzepa

THANK
YOU

PHILANTHROPIC
SUPPORTERS

DONOR HONOR ROLL

\$250 - \$999 cont.

Art and Laurie Huffman

James Hurst

Sharon Inkeles

Inspire Smiles

Rachel Zack Ishikawa

IVG Energy

Joanne Jablow Yunich

Stephanie Josephson

Holger Justwan

Kathleen Kelley

Trenton Kelley

Garrety Kelly

Michael Kennedy

Ray and Connie Kingsbury

Gary Krueger

Ed and Missy Kuklenski Gift Fund

William LaFuze

R E Laplante

Adam Levinson

Peter Lichtenthal

Amy Lindsey

Jill Lueders

Victoria Maldonado

Jacob Malikkal

Michael Mangan

David Maurer

Michael McGinity

Sari Meltzer

Georgette Michko

Kelly Millhaem

Mingori Charitable Fund

Tapan Modi

Bryce Moffett

Sundas Mohi

Dianne Moore

Fatima Morales

Robyn Moscowitz Narro

Matt Mullenweg

Sarah Alyssa Mueller

Federico Naranjo Jr.

Michael Navolio Jr.

Cynthia Neal

Need Computer Help

Netflix

Mark Newell

Shayne Newell

Emmanuel Olivier

Stephanie Page

Heidi Pan

Panther Fluids Management

Amanda Parnell

Thu Phan

Noey Perez

Lisa and Dennis Petito

Pamela Pierce

Daisy Puente

David Pruner

rand* construction corporation

Charles Randall

William D. Rea

Christy Reed

Veena Reddy

Katie Register

Phillip Ribbeck

Terri Rich

Carol Robinson

Ellen and Steven Robinson Giving Fund

David Rodee

Collin Rose

Phillip Ross

Summer Rudd

Marian Sanders

Consuelo Santana

THANK
YOU

PHILANTHROPIC
SUPPORTERS

DONOR HONOR ROLL

\$250 - \$999 cont.

Eitel Schmidt
Tracie Schmitt
Halie Shah
Jane Sloan
Dean Smith
Ken Smith
Jaclyn Smulofsky
Mike Spinks
Jessica Stafford
Stage 3 Separation
Caroline Starry
Tim Stefl
Stellar Drilling Fluids
Bill Stephenson
John Suehiro
Triscilla Taylor
Richard Thompson
Patrick Timmons
Sharon Timmons
Ron Trahan
Jeremiah Traxler
Lee Train
Trinity Environmental Services
Payson and Susie Tucker
Laurie Tuzo
Janice L. Van Derbur

Flor Vergara
Leslie Vickrey
Josh Wagner
Susan Waldman
Darcy Walker
Matthew Waters
Waukegan to College
Carter White
Richard Whitney
Ann Williams
Barbara Williams
The Williams Companies, Inc
Rick Wilson
Ryan Wolf
Greg Wolfe
Christopher Worthen
Melea Yaslovitz
Alicia Zha
Peter Zwart

THANK YOU

PHILANTHROPIC SUPPORTERS

PARTNER HONOR ROLL

Partnerships with community-based organizations are critical to our ability to mobilize and serve, particularly in 2020. Comp-U-Dopt is proud to have partnered with the following organizations:

| | |
|---|---|
| 10th Ward-Chicago | Parent University |
| AFTRR | Repurpose |
| Aldine Independent School District | RISE |
| Alief Independent School District | SIM National |
| ATEN | SoLA I CAN Foundation |
| Austin Coming Together | Something Good in Englewood |
| Boys and Girls Club of Lake County | Spring Branch Independent School District |
| Bright Star Community Outreach | Texas City Independent School District |
| Chicago Cares | UCAN Academy |
| Chicago Public Schools | Urban Strategies |
| City Colleges of Chicago | Waukegan Community Unit School District #60 |
| City of Chicago - Department of Family and Support Services | The Webby Awards |
| City of Dallas | West Dallas Multiservice Center |
| City of Houston | WFAA |
| City of New Orleans | YMCA of Greater Houston |
| Clear Creek Independent School District | YMCA of Metropolitan Chicago |
| Communities in Schools | YMCA of Metropolitan Dallas |
| Covington Connected | YMCA of Rock River Valley |
| CRED | |
| DC Public Schools | |
| Enlace | |
| Galveston Independent School District | |
| Genesys Works | |
| Girls Empowerment Network | |
| Girls Inc. | |
| Head Start | |
| Heart of the City | |
| Houston Independent School District | |
| iEducate | |
| KIPP Texas | |
| Latinas Progressando | |
| MLK Jr Community Center | |
| NOLA Code | |
| Northwest Side Housing Center | |
| Odyssey Academy | |
| Orleans Parish School District | |

THANK
YOU

COLLABORATIVE
PARTNERS

2020 FINANCIALS

2020 STATEMENT OF ACTIVITIES

REVENUE

| | |
|--------------------|--------------|
| Contributions | \$7,913,873. |
| Fundraising events | \$180,101 |
| Other income | \$28,270 |

| | |
|----------------------------------|--------------------|
| TOTAL SUPPORT AND REVENUE | \$8,122,244 |
|----------------------------------|--------------------|

EXPENSES

| | |
|---------------------|-------------|
| Program Services | \$6,197,062 |
| Supporting Services | \$441,849 |

| | |
|-----------------------|--------------------|
| TOTAL EXPENSES | \$6,638,911 |
|-----------------------|--------------------|

2020 STATEMENT OF FINANCIAL POSITION

ASSETS

| | |
|--|-------------|
| <u>Total Cash & Cash Equivalents</u> | \$1,457,232 |
|--|-------------|

Fixed Assets

| | |
|--------------------------|-------------|
| Land and building | \$1,500,000 |
| Building improvements | \$995,366 |
| Vehicles | \$99,377 |
| Accumulated depreciation | (\$130,330) |

| | |
|---------------------------|--------------------|
| Total fixed assets | \$2,464,413 |
|---------------------------|--------------------|

| | |
|---------------------|--------------------|
| TOTAL ASSETS | \$3,921,645 |
|---------------------|--------------------|

LIABILITIES AND NET ASSETS

Liabilities

Current Liabilities

| | |
|---------------------------------------|-------------|
| Accounts payable and accrued expenses | \$128,793 |
| PPP loan | \$120,200 |
| Current portion of long-term debt | \$1,142,665 |

| | |
|----------------------------------|--------------------|
| Total current liabilities | \$1,391,658 |
|----------------------------------|--------------------|

| | |
|--------------------------------------|---|
| Long-term debt, less current portion | - |
|--------------------------------------|---|

| | |
|--------------------------|--------------------|
| Total liabilities | \$1,391,658 |
|--------------------------|--------------------|

Net Assets

| | |
|----------------------------|-------------|
| With donor restrictions | \$144,146 |
| Without donor restrictions | \$2,385,841 |

| | |
|-------------------------|--------------------|
| Total net assets | \$2,529,987 |
|-------------------------|--------------------|

| | |
|---|--------------------|
| TOTAL LIABILITIES AND NET ASSETS | \$3,921,645 |
|---|--------------------|

BOARD OF DIRECTORS

OFFICERS

John Osha, President and Founder
Global Chair, Osha Bergman Watanabe &
Burton LLP

John Campbell, Chair
COO, Sierra Resources

Brian Williams, Vice-Chair
Former Project Manager, BP

Sarah Menendez, Secretary
Senior Litigation Counsel, BMC Software

Chrissy Wilson, Treasurer
Partner, Desroches Partners

MEMBERS

Varun Babbili
Principal, White Deer Energy

Carlyn Burton
Partner, Osha Bergman Watanabe & Burton LLP

Angie Halderman
Vice President, Business Development and
Channel Sales, Docusign

Scott Harlan
Managing Partner, Rockland Capital

Art Huffman
Retired CIO, Halliburton

Jenny McCauley
Senior Vice President, Southwestern Energy

Curt Morgan
CEO, Vistra Corp

Kimberly Penn
President and CEO, Webtropolis

Laurie Tuzo
Retired, JP Morgan Chase

Bruce Misamore, Emeritus Member
Retired CFO, Yukos Oil

Larry Smith, Emeritus Member
Senior Vice President, Wealth Enhancement Group

LOCATIONS

National Headquarters

1602 Airline Drive, Houston, TX 77009
(281) 572-0419
info@compudopt.org

Galveston, TX

4116 Avenue N 1/2, Galveston, TX 77550
(409) 515-1198
info@compudopt.org

Chicago and Northern Illinois

1414 Brook Drive, Downers Grove, IL 60515
(630) 376-6558
info@compudopt.org

Houston, TX

1602 Airline Drive, Houston, TX 77009
(281) 572-0419
info@compudopt.org