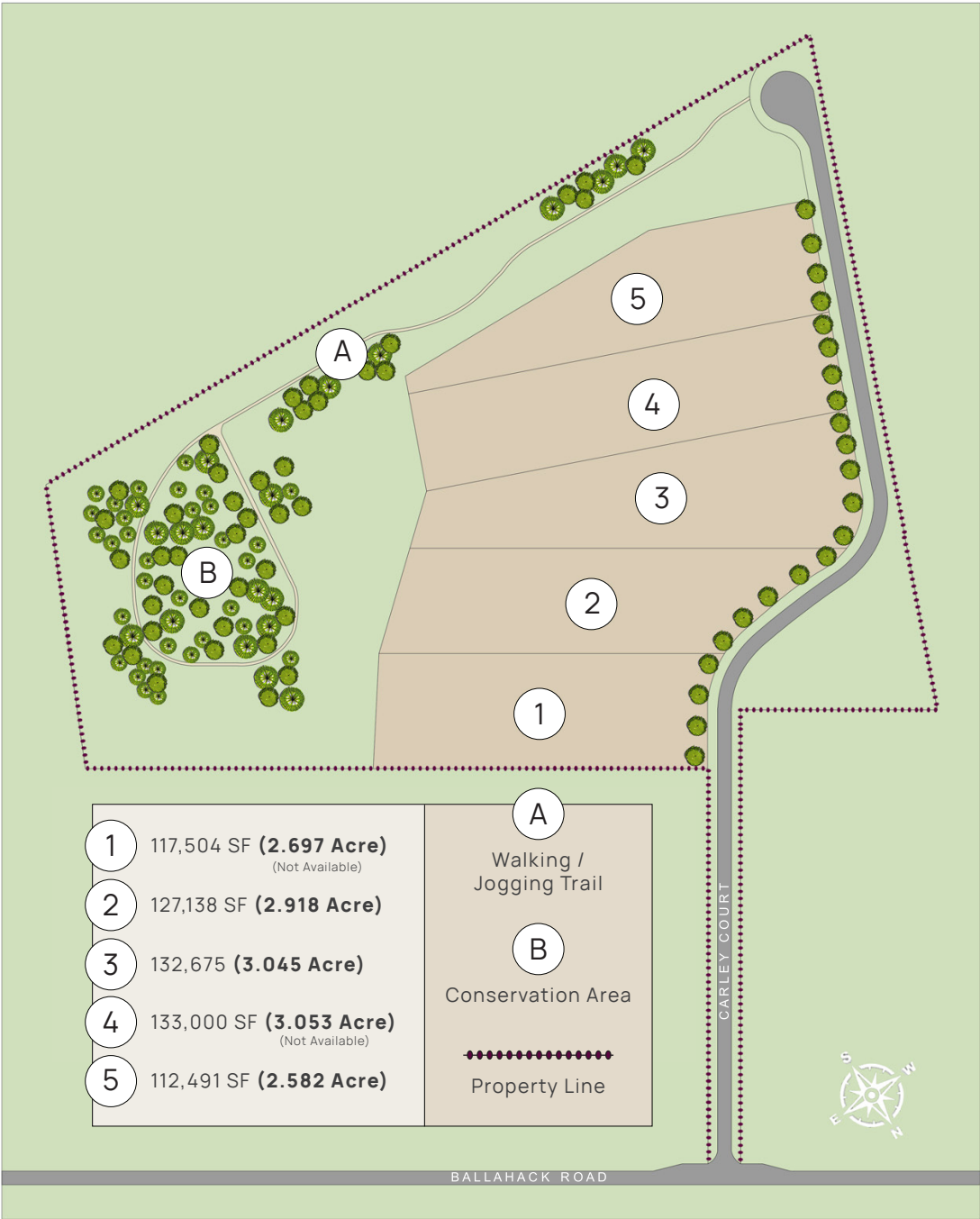


THE TOWPATH

4 BEDS • 3 BATHS • 2,400 SQFT



www.kmcashconstruction.com



JULIE | FISH
REAL ESTATE
757-305-8007
Julie@MyAgentJulieFish.com
MyAgentJulieFish.com

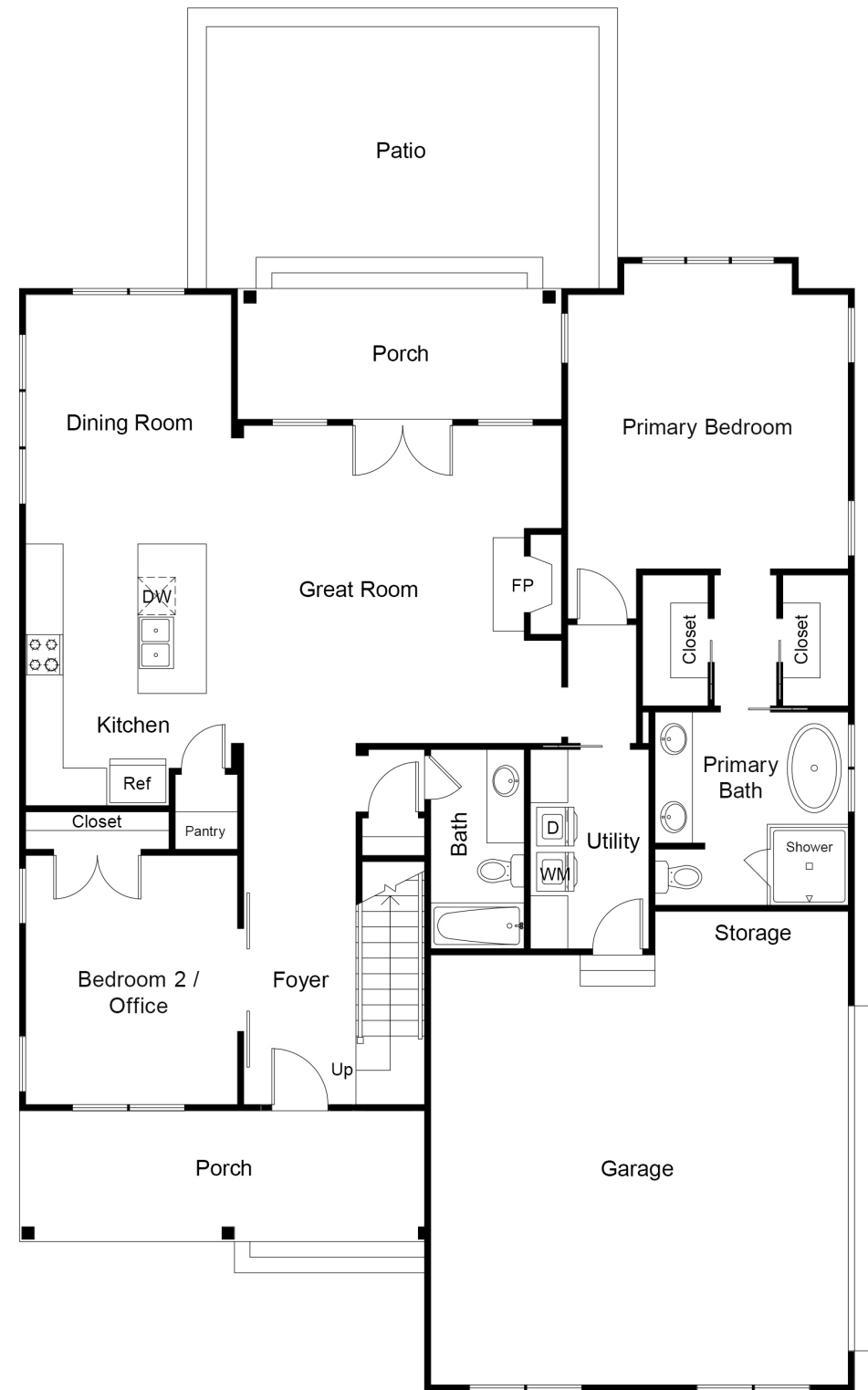
BERKSHIRE HATHAWAY
HOMESERVICES
RW TOWNE REALTY

137 Mt Pleasant Rd, Chesapeake, VA 23322 • Office: 757-436-3636

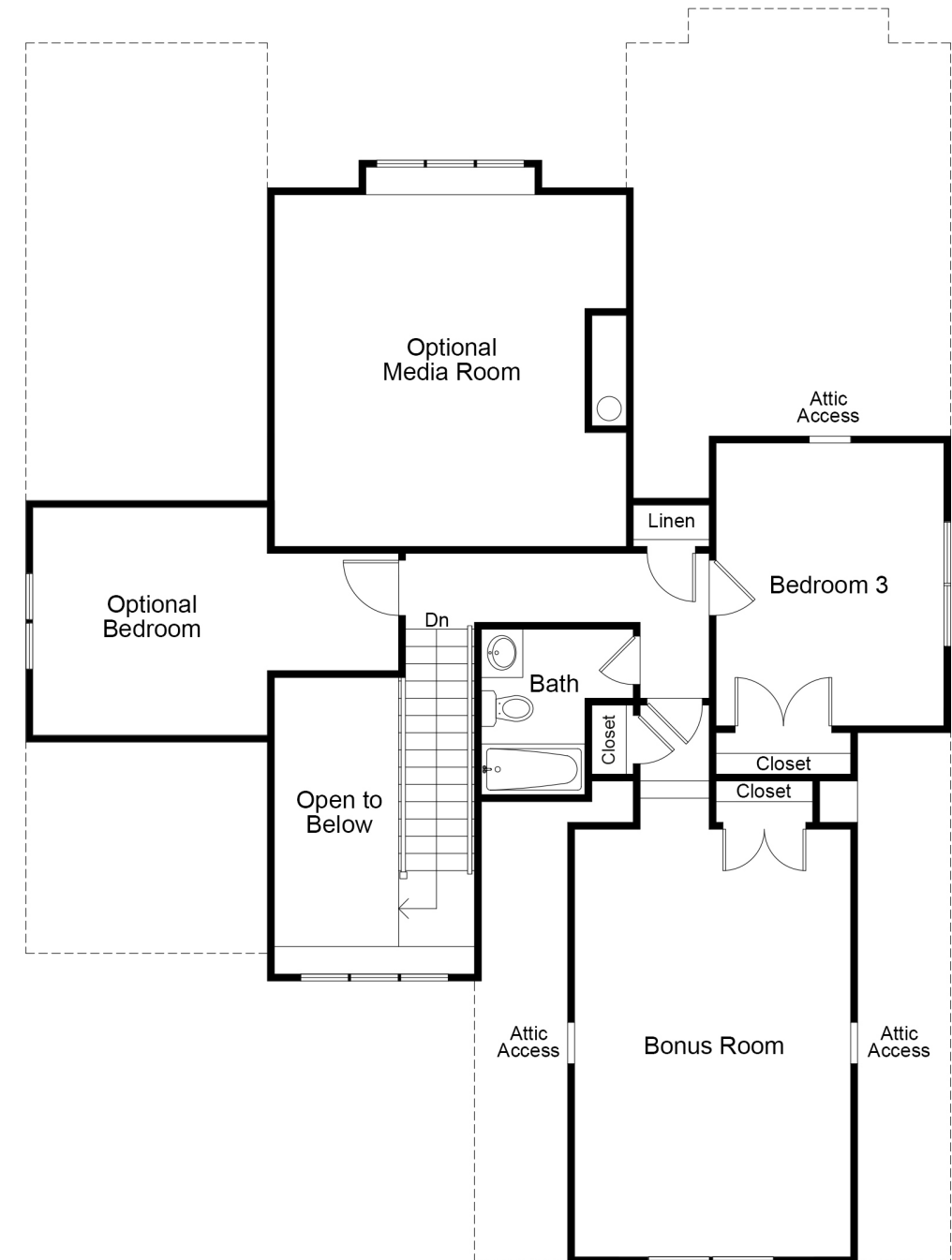
Exclusive Agent Representing the Seller. All information is believed to be accurate but is not warranted and is solely a guide to prospective purchasers who should satisfy themselves by inspection or otherwise as to the correctness of this information. ©2025 BH Affiliates, LLC. An independently owned and operated franchise of Berkshire Hathaway HomeServices, LLC. Berkshire Hathaway HomeServices and the Berkshire Hathaway HomeServices symbol are registered service marks of Columbia Insurance Company, a Berkshire Hathaway affiliate. Equal Housing Opportunity. Berkshire Hathaway HomeServices/RW Towne Realty is an affiliate of TowneBank and licensed in the states of Virginia and North Carolina.



THE TOWPATH PLAN



FIRST FLOOR



SECOND FLOOR

