

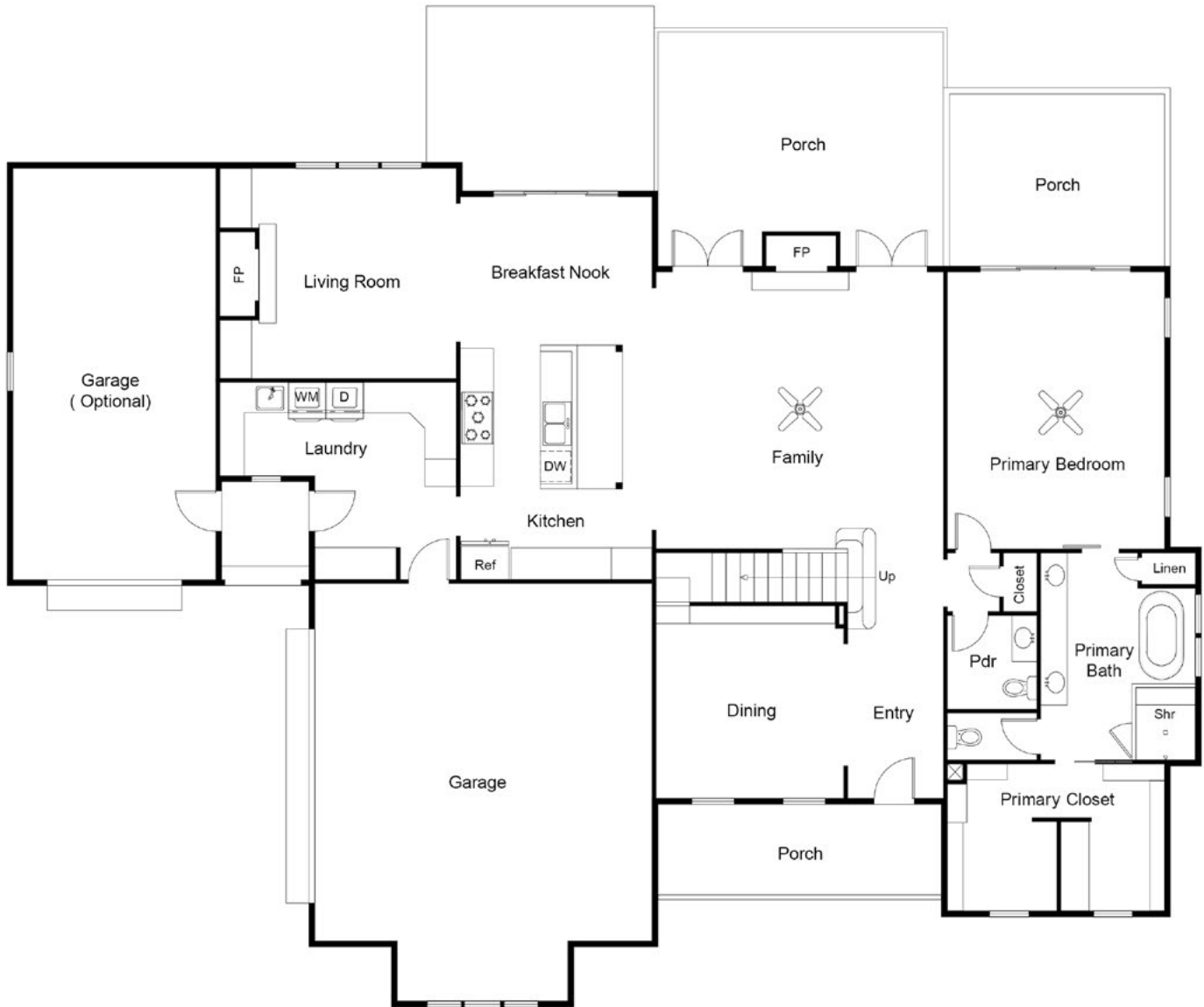
# THE GRASSFIELD

5 BEDS • 3.5 BATHS • 3,300 SQFT



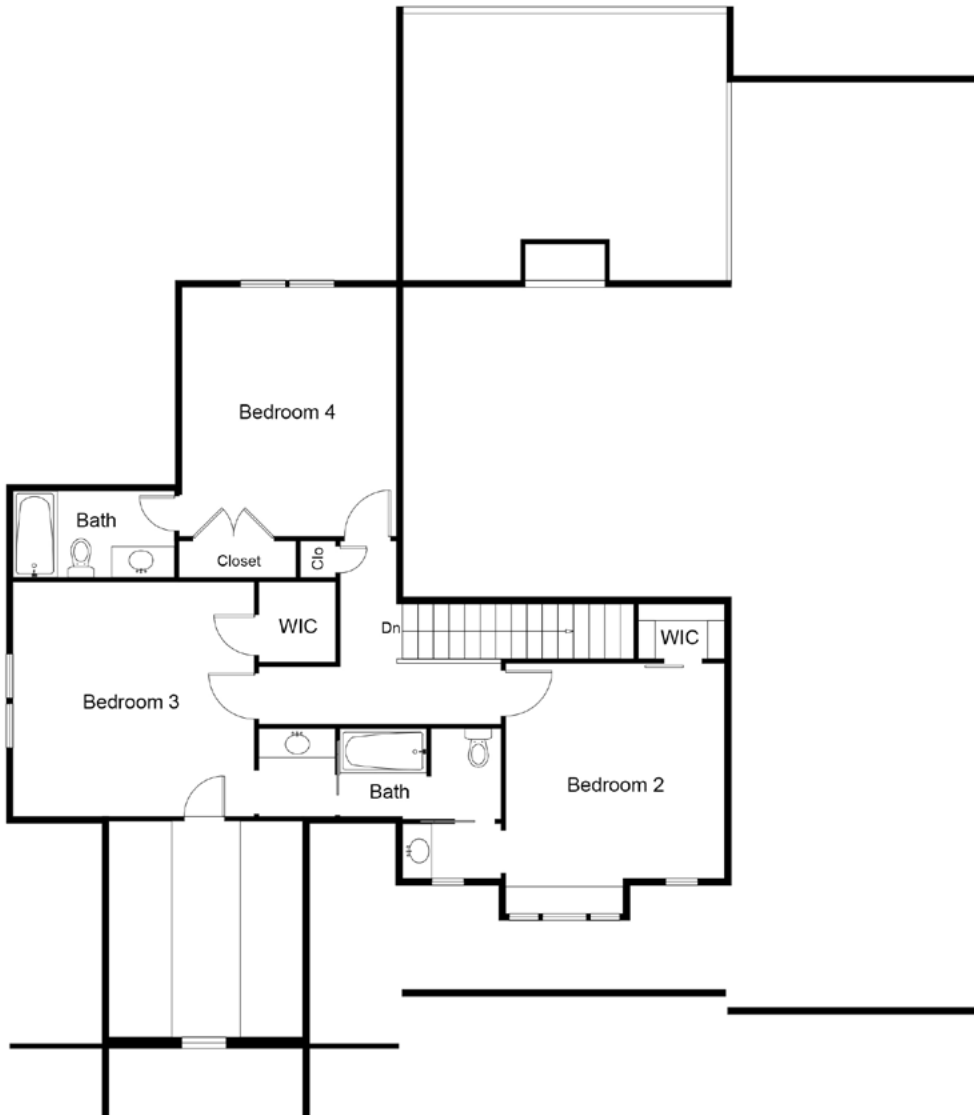
**BALLAHACK**  
— ESTATES —

# THE GRASSFIELD PLAN

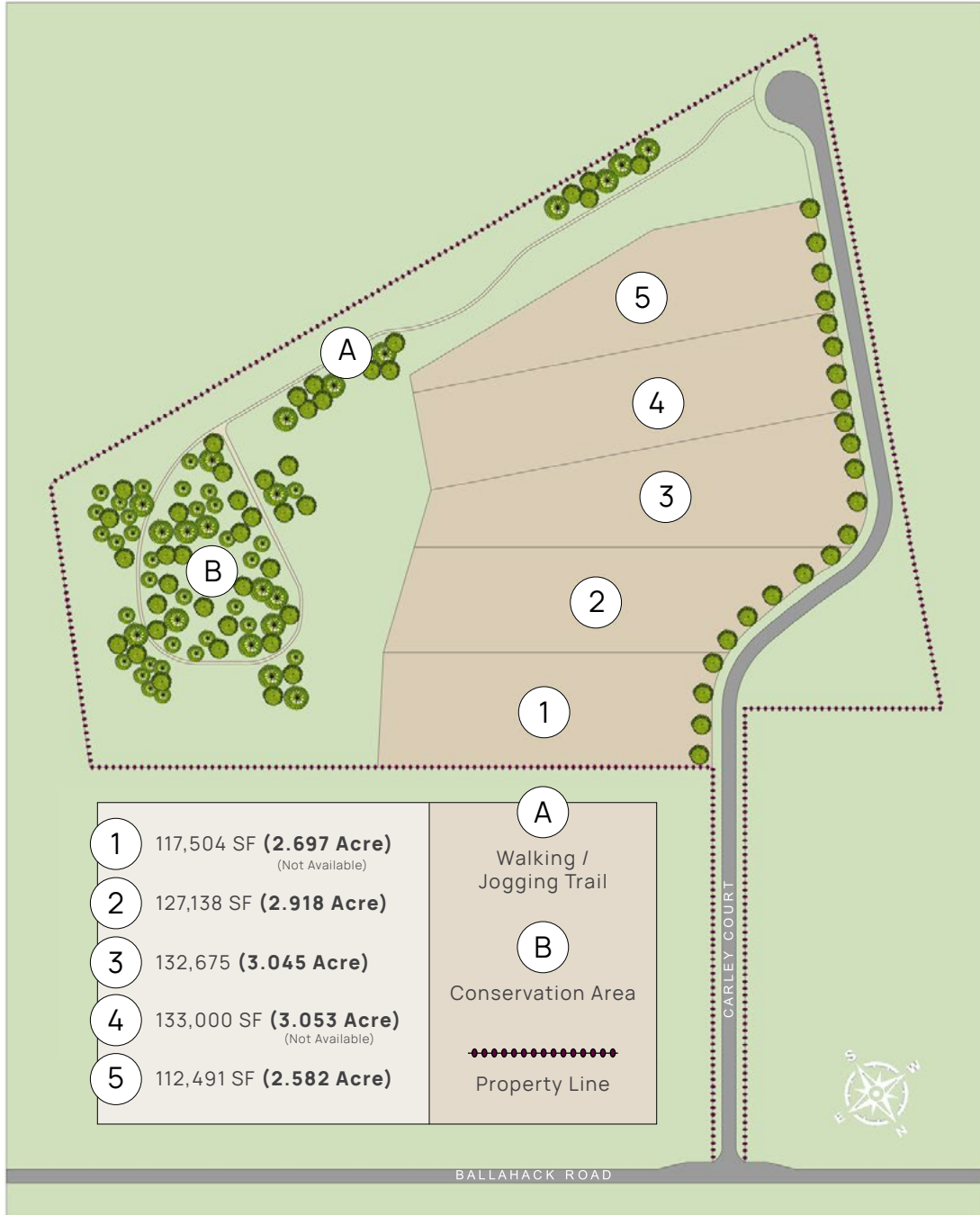


## FIRST FLOOR

# THE GRASSFIELD PLAN



## SECOND FLOOR



www.kmcashconstruction.com



**JULIE | FISH**

REAL ESTATE

757-305-8007

Julie@MyAgentJulieFish.com

MyAgentJulieFish.com

**BERKSHIRE  
HATHAWAY**  
HOMESERVICES

RW TOWNE  
REALTY

137 Mt Pleasant Rd, Chesapeake, VA 23322 • Office: 757-436-3636

Exclusive Agent Representing the Seller. All information is believed to be accurate but is not warranted and is solely a guide to prospective purchasers who should satisfy themselves by inspection or otherwise as to the correctness of this information. ©2026 BHH Affiliates, LLC. An independently owned and operated franchise of BHH Affiliates, LLC. Berkshire Hathaway HomeServices and the Berkshire Hathaway HomeServices symbol are registered service marks of Columbia Insurance Company, a Berkshire Hathaway affiliate. Equal Housing Opportunity. Berkshire Hathaway HomeServices RW Towne Realty is an affiliate of TowneBank and licensed in the states of Virginia and North Carolina.

