

# THE ALBEMARLE

4 BEDS • 3.5 BATHS • 2,700 SQFT



www.kmcashconstruction.com



**JULIE | FISH**

REAL ESTATE

757-305-8007

Julie@MyAgentJulieFish.com

MyAgentJulieFish.com

**BERKSHIRE  
HATHAWAY  
HOMESERVICES**

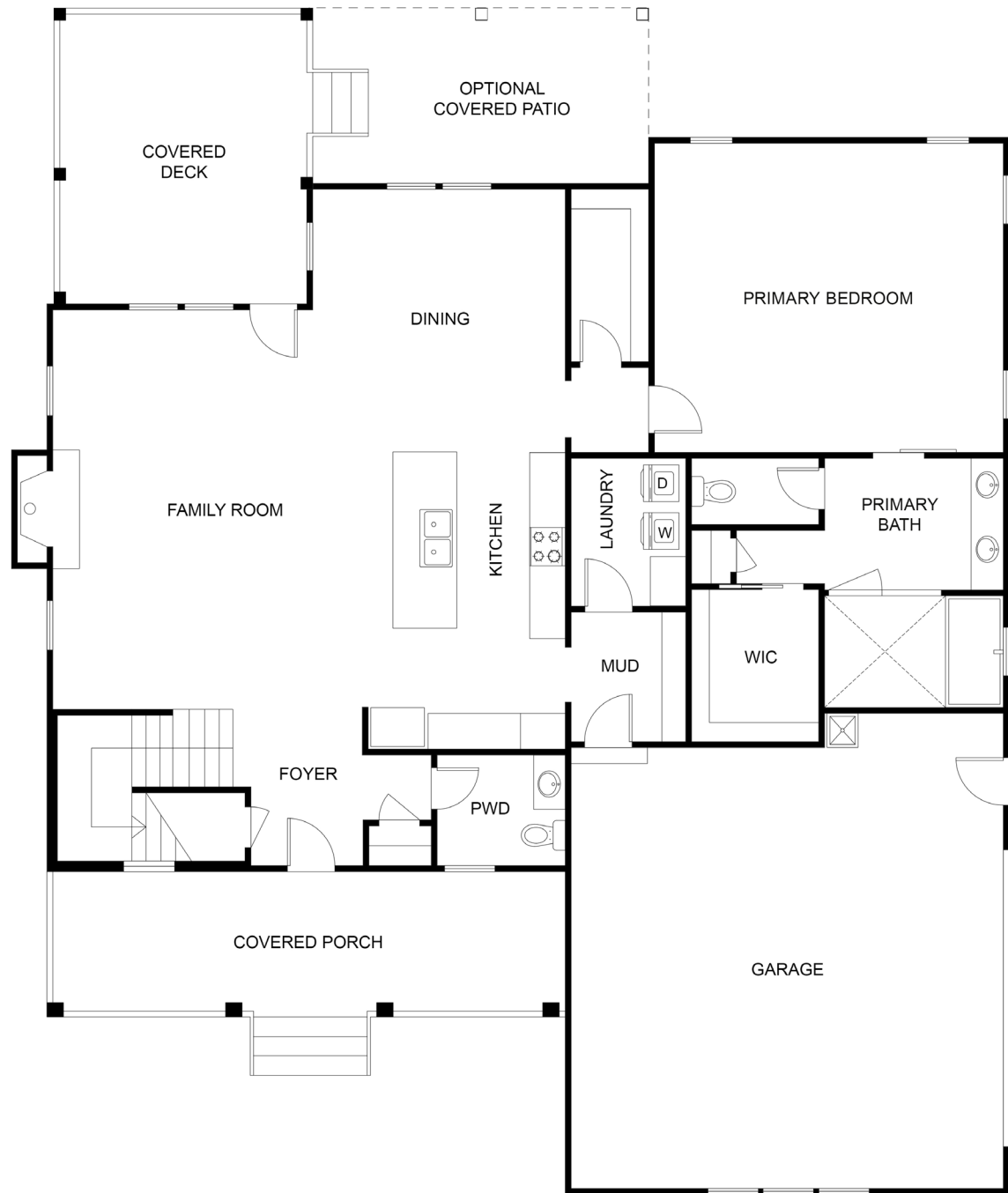
RW TOWNE  
REALTY

137 Mt Pleasant Rd, Chesapeake, VA 23322 • Office: 757-436-3636

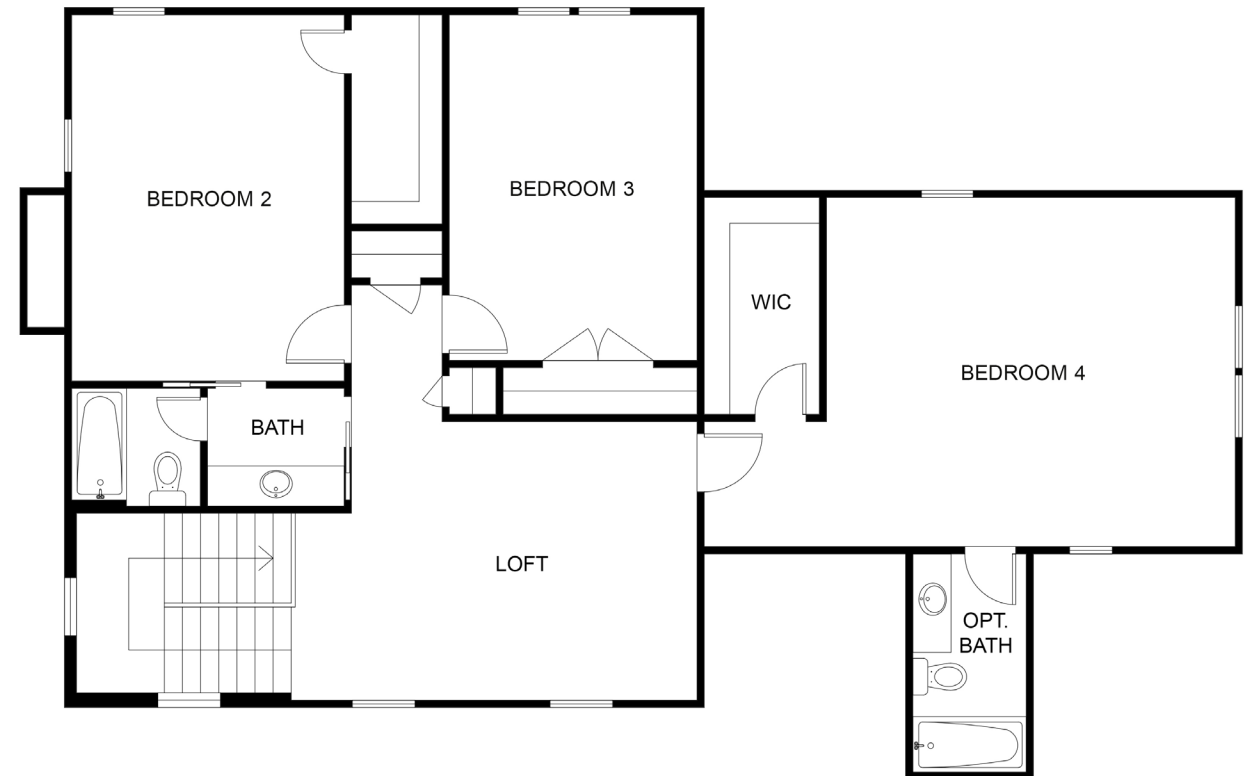
Exclusive Agent Representing the Seller. All information is believed to be accurate but is not warranted and is solely a guide to prospective purchasers who should satisfy themselves by inspection or otherwise as to the correctness of this information. ©2025 BH Affiliates, LLC. An independently owned and operated franchise of Berkshire Hathaway HomeServices, LLC. Berkshire Hathaway HomeServices and the Berkshire Hathaway HomeServices symbol are registered service marks of Columbia Insurance Company, a Berkshire Hathaway affiliate. Equal Housing Opportunity. Berkshire Hathaway HomeServices/RW Towne Realty is an affiliate of TowneBank and licensed in the states of Virginia and North Carolina.



# THE ALBEMARLE PLAN



FIRST FLOOR



SECOND FLOOR

