



CAPABILITY STATEMENT



OUR MISSION

“CHS Group is committed to innovation and excellence.

We strive to consistently provide reliable, amicable, professional service to our valued clients and customers.”

CHS is a group of companies with a particular focus on the renewables and construction sectors and capacity to service any domestic, commercial or industrial inquiry.

Founded in 1962, our family-run company has offices throughout Western Victoria and employs a highly experienced workforce of more than 140 people.

We never forget the past and acknowledge the former generations of mentors and how lucky we are to have been taught to be safe, be fair and always be neat in the work you do. We are very proud to have trained over 150 apprentices throughout the journey.

Our size and our diversified offering make us uniquely positioned to deliver many large scale projects both locally and interstate as the **principal contractor** from commencement through to completion and maintenance.

We value our client relationships first and foremost and view them as fundamental to our continued success and growth as a company. Reliable communication, consistent quality-oriented results, dependable service and acting with integrity are our key drivers in ensuring a successful outcome for our clients.

Timothy J Hopper
Managing Director

KEY COMPETENCIES

	expertise across a broad range of fields		our team like culture and community mindedness
	focus on high quality results.		being “on time and on budget”
	leadership within the industry		forming strong customer relationships
	our commitment to safety		local knowledge, national experience

A DIVERSIFIED & CAPABLE GROUP

We are highly versatile in our capabilities, offering a diverse array of services with many in-house products and plant at our disposal. With over 50 years in business, our technical knowledge and depth of experience within our workforce mean that we are regarded as reliable and competent experts in many fields.



CONTENTS

WHO WE ARE - 3
HISTORY & GROWTH - 5
OUR STRUCTURE - 7
OUR PEOPLE - 9
COMMUNITY - 11
HEALTH & SAFETY - 13
OUR CLIENTS - 15
DIVISIONS - 16-47

LOCAL KNOWLEDGE - NATIONAL EXPERIENCE

As locals, we know Western Victoria like the back of our hand yet our business knows no bounds operationally. Over the course of our existence we have confidently operated throughout Australia delivering large scale projects for multi-national clients. We are down-to-earth enough to look after the smallest residential enquiries yet fully equipped to take on major industrial projects Australia wide.



Cec Hopper, founder

Cecil "Cec" Hopper was the son of a Welsh migrant Ted Hopper. Both Ted and Cec were electricians.

Cec began his own business in 1962 as "Cec Hopper". A local builder, Mr Arthur Sutherland, lent Cec some money to start his business at a time when borrowing money was very difficult.

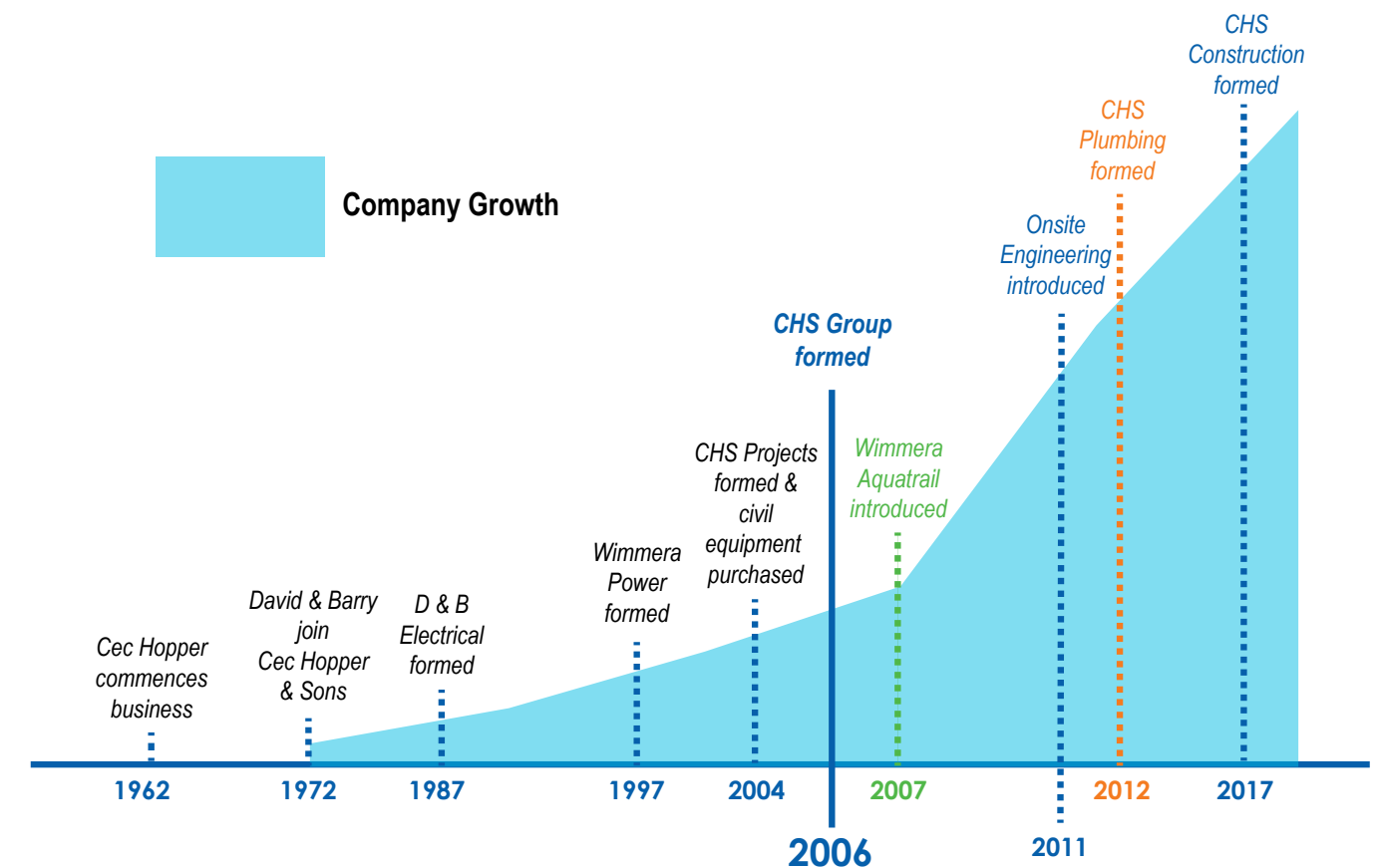
Cec originally travelled to and from job sites by bicycle, with a trailer attached. It was very physical work which included mounting poles. In today's

times, this would be unthinkable without a crane and a truck!

The catalyst for Cec's business came when residents in the area were required to switch from DC to the AC power.

Cec's main clients at the time were Noske Flour Mills, local farmers, Horsham residents, the shire council and the water board.

Cec Hopper in his early years engaged as an electrician working for Noske Flour Mills



David Hopper
former Managing Director

David commenced with the business in 1962 as a 14 year old apprentice to his

father Cecil. David did his electrical training by correspondence through RMIT finishing his training at Horsham Tech.

In partnership with his brother Barry, he took over the running of Cec Hopper and Sons in 1987. During this time, David oversaw the delivery of large scale water treatment projects throughout Australia and witnessed transformative leaps in electrical technologies. He has enjoyed seeing CHS prosper and grow thanks to committed and hard working staff and family.



Barry Hopper
Director

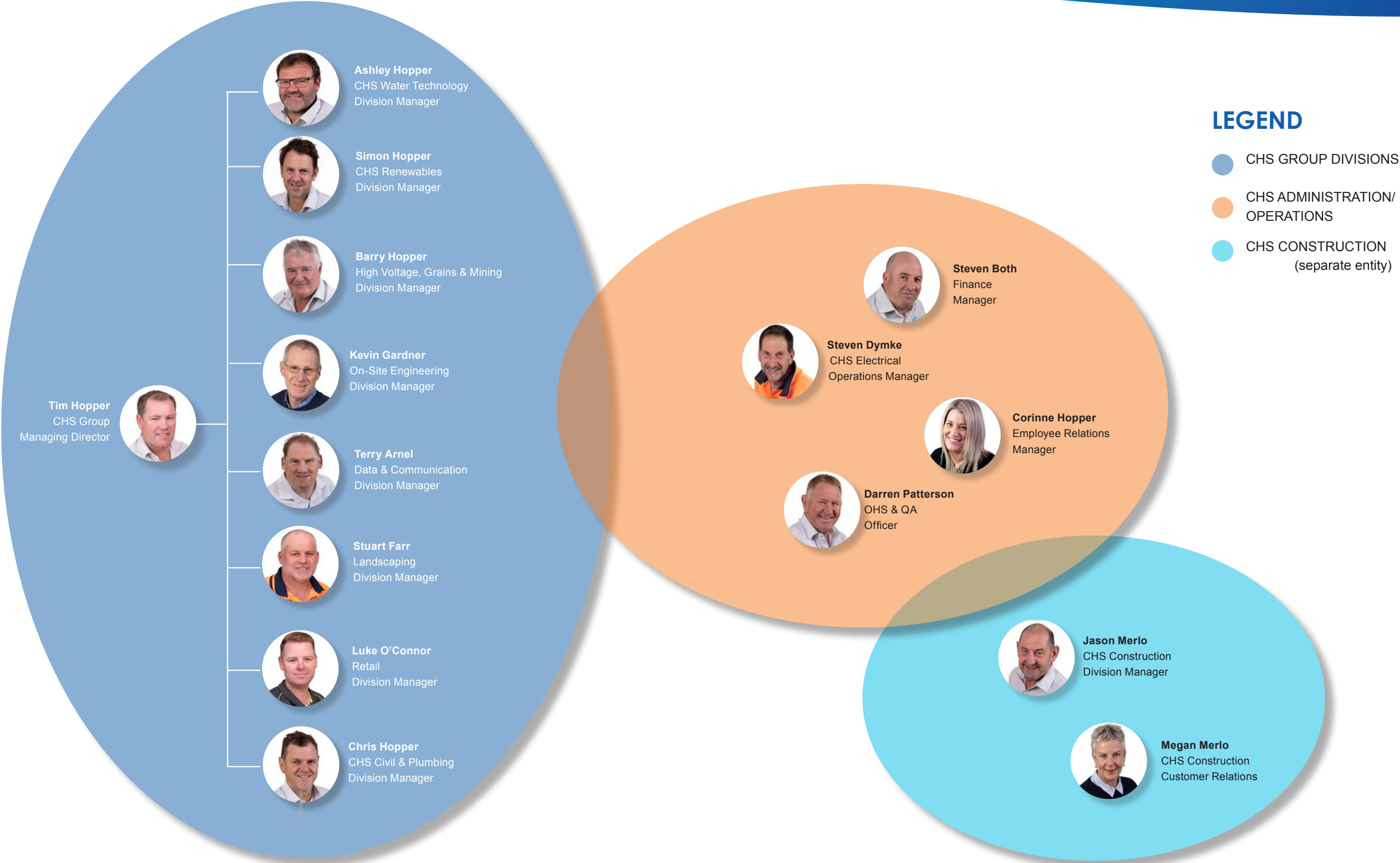
Barry has been both managing director and chairman of CHS Group board and has been with the business for

50 years. He is currently division manager for two specialised electrical divisions: High Voltage and Grain.

He is an A-Grade electrician and a qualified linesman and High Voltage terminator. Barry takes great satisfaction in using his specialist skills to deliver projects that require delicacy, precision and thoroughness for CHS's valued clients. Working alongside Cec and David and seeing the business expand has been very rewarding. He is also enjoying seeing another generation of family running the business.



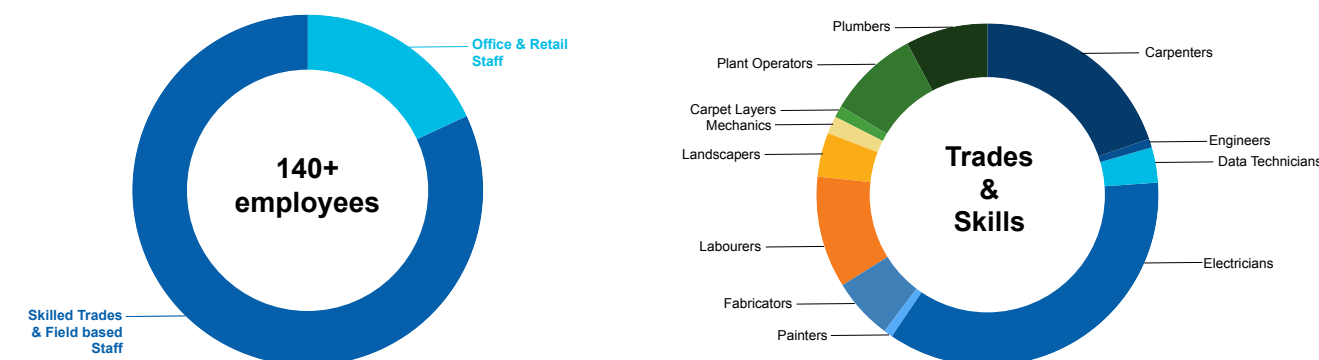
A “FAMILY” OF SPECIALISTS



LEGEND

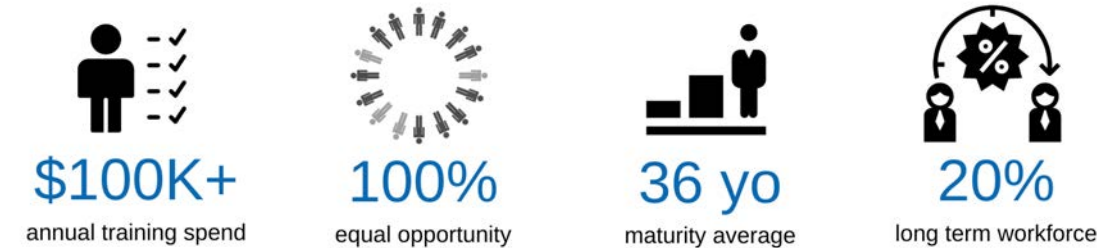
- CHS GROUP DIVISIONS
- CHS ADMINISTRATION/ OPERATIONS
- CHS CONSTRUCTION (separate entity)

OUR SKILL SETS



Our trade based skills dominate our business structure.

Within our operations, we have one of the most diverse suites of skills you could anticipate to deliver projects from the ground up.



We are extremely proud of our staff and our longstanding relationships with them. We currently employ a diverse group of over 140 staff many of them remaining loyal to us throughout their careers. We also recognise the importance of nurturing new talent, and since the company's inception more than 50 years ago, have employed and supported over 150 apprentices.

A strong advocate for equal opportunity in male-dominated sectors, we employ a considerable number of women inclusive of a female board member and formerly a female tradesperson. Currently 9% of our workforce is female.

Diversity is an important feature of our workplace and we espouse the value of the skilled migrant scheme. Over the years we have employed a number of international employees from India, Africa, UK, New Zealand, Europe and South America.

We believe many of these sought after characteristics within our workforce are what help to make us successful in our projects and business activities. We very much look forward to the opportunity of demonstrating their talents on your next project.

"I have been with CHS Group for over 40 years now. They have been very supportive and encouraging employers. I enjoy the trust they place in me to get the job done."

STEVEN DYMKE, Operations Manager



RON KLEMM AWARD

Ron Klemm became a CHS Group employee in 2007 when we acquired Wimmera Aquatrail. Prior to this, we regularly engaged Ron through his own earthworks business. He was a fantastic Jack of All Trades with particular prowess with pumps. Ron was a true “people person”, regularly cracking jokes and always had a smile on his face. He looked after everyone whether they were his fellow employees, suppliers or customers and strove to deliver a quality experience every time. Ron was also an outstanding community contributor having donated many volunteer hours to Quantong Cricket Club. Sadly, in February 2018 he passed away after a long battle with cancer.

To honour Ron’s outstanding qualities, we have established an employee service award in his name. Each year, based on selection criteria, the team at CHS nominate a staff member whose work philosophy is in line with Ron Klemm’s values, personality, work ethics and customer service and acknowledge their contribution with a trophy.



COMMUNITY SERVICE & SPONSORSHIP

We value our community and our contributions to it. Our key staff alone **volunteer more than 5,000 hours** of their time to community service annually. We also **donate upwards of \$50,000** back into our local communities each year. As a sporting family with a history steeped in cricket, we place a high value on the benefits of recreation and sportsmanship and we gladly sponsor many sporting clubs in the region to promulgate these benefits.




5000+
volunteer hours p.a.



Ararat Tennis Club
Brittany Laskaj - Show Jumping
Homers Cricket Club
Horsham Cricket Association
Horsham East Rotary - Art Fair
Horsham East Rotary Club
Horsham Football Netball Club
Horsham Golf Club
(Eagle Member)
Horsham Greyhounds

Horsham Homing Pigeons
Horsham Little Athletics
Horsham Town Hall
(Patron)
Horsham Racing Club
Horsham Regional Swimming
Pools (Gold Sponsor)
Horsham Table Tennis Centre
Horsham Town Hall
Kalkee Football Netball Club

Laharum Football Netball Club
Murtoa Racing Club
Riding for the Disabled
Wimmera Base Hospital
(500 Club)
Wimmera Legacy



It does not matter what you call it, WHS, HSE, OHS, **safe workplace practices underpin all of what we do**. In all of our activities, whether office based or out at site, we keep safety top of mind with regards to how it affects our employees, those around us and also the effect we might have on the environment. At CHS, **we abide by the OHS Act 2004 (VIC) and follow the OHS Regulations 2017 (VIC)** as well as the corresponding compliance codes. As a contractor who operates across Australia, we have a firm understanding of WHS obligations both state-wide and national.



12.1

LTI frequency rate

Within our company we have appointed an experienced **OHS officer** who has worked in safety related positions for more than 30 years and chairs a dynamic **Health and Safety committee**. To ensure our employees are keeping

abreast of current practices and legislation, we engage **nationally recognised training** organisations (RTOs) to train them.

CHS Group's Integrated Management System (IMS) comprises three disciplines; safety, quality and environment all of which have been **certified by Equal Assurance since 2010**. Equal Assurance is well known within Australia for auditing and assurance services and is a world-wide grouping of independent management practices and accredited partners. Equal Assurance are also **endorsed by JASANZ, the government-appointed accreditation body** for Australia and New Zealand responsible for providing accreditation of conformity assessment bodies (CABs) specifically in the fields of certification and inspection.

Our company's HSEQ practices, managed by our dedicated personnel along with the external involvement of Equal Assurance and RTOs, give us great confidence that we meet our obligations and client expectations. For any concerns or queries regarding health, safety or quality matters please speak to our dedicated officer, Darren Patterson on (03) 5381 6400.



Darren Patterson
OHS & QA
Officer



Quality & OHS Certified Company

Licence Number Q0180



CHS is committed to conducting all of our work in an **environmentally sensitive** manner. We review every aspect of our activities within the context of our Integrated Management System to ensure environmental objectives are met and company policies are followed.

"...we have found their materials and their labour services to be exceptional, as well as their ability to get jobs completed in a timely fashion. The employees were professional, organised and pleasant to work with and we look forward to keeping the same relationship in future."

SHANNON WILLIAMSON
MAMMOET

A SELECTION OF OUR CLIENTS





CHS Renewable Energy has worked on wind farm projects from earthing & HV underground/overhead reticulation to the connection of the nacelle for almost 20 years.

We have a solid reputation as professionals in this sector and continue to deliver full-scale projects throughout Victoria and beyond.

Of note is our capacity to supply labour, plant and services, safely and economically, from our base in Western Victoria, a region where significant investment and rapid growth in renewables is occurring.

For more information regarding our capabilities or to request a meeting please contact Barry or Tim Hopper on (03) 5381 6400 or e-mail admin@chsgroup.com.au



Barry Hopper
Wind
High Voltage, Grains & Mining
Division Manager



Tim Hopper
Wind & CHS Group
Managing Director



WHAT WE DO

Temporary Site Establishment	Office & Warehouse Construction
WTG Earthing	Fibre Optic Cabling
Terminal Station Construction	Fibre Optic Termination & Testing
Low & High Voltage Work	SCADA & Comms. configuration
Landscaping & Industrial Piping	Full ECC & MCC
FOB Testing	Potable Water Supply



Temporary service establishment

Electricity, Water and Sewage

Building Walkways

Electrical Generator connection

Water Main Extension

Sewage pump out throughout

Potable water supply

WTG Earthing

Installation of foundation earthing

FOB Testing

Flexibility to meet the fluctuation of pour dates

Terminal Station Construction

Concrete

Earthing System

Electrical Installation


HVO


(High Voltage Operator)

- Process and liaison with authority
- Supply of certified HVO

Electrical

- Installation
- Testing (IR, VLF, Point to Point, Phase Rotation)
- Electrical Servicing Work

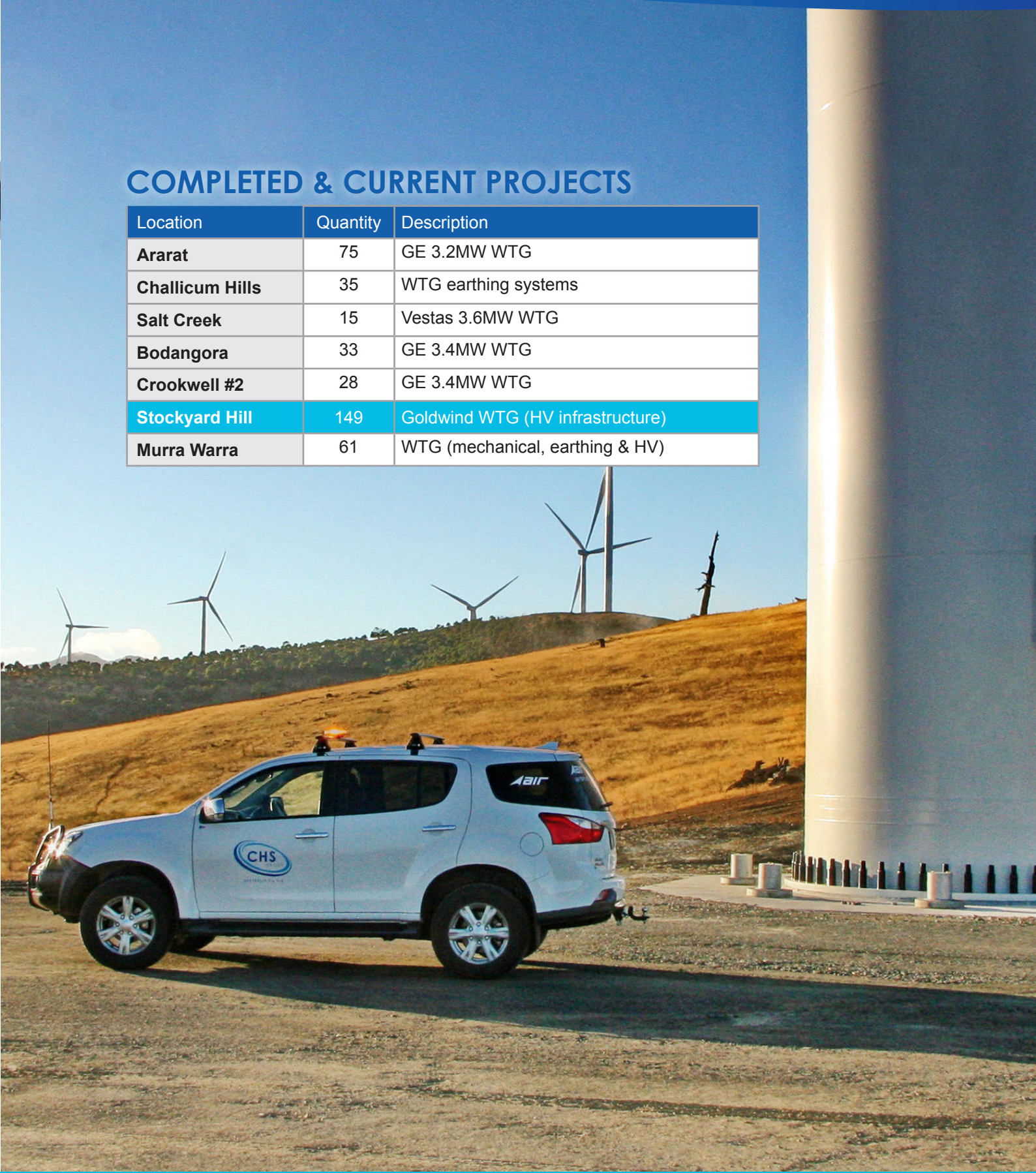



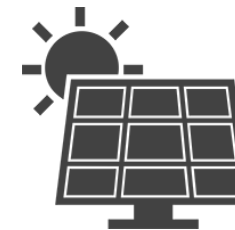





COMPLETED & CURRENT PROJECTS

Location	Quantity	Description
Ararat	75	GE 3.2MW WTG
Challicum Hills	35	WTG earthing systems
Salt Creek	15	Vestas 3.6MW WTG
Bodangora	33	GE 3.4MW WTG
Crookwell #2	28	GE 3.4MW WTG
Stockyard Hill	149	Goldwind WTG (HV infrastructure)
Murra Warra	61	WTG (mechanical, earthing & HV)





COMPLETED & CURRENT PROJECTS

Location	Description
Rainbow	Bureau of Meteorology 20KW System
Ocean Grove	Design & Installation 80KW System City of Greater Geelong
Horsham	Kalkee Road Community Hub 40KW system
Horsham	Wimmera Cancer Centre 20KW system
Warracknabeal	Rural North West Health Hospital 20KW system
Minyip	Dunmunkle Lodge Aged Care 30KW system

Solar Energy services have been a fundamental part of our business since 2010 in order to cater to the high consumer demand for alternative energy sources. Our team of qualified and accredited installers supply and service systems from residential through to industrial size setups.

We source our systems worldwide to ensure you are getting the highest quality components, the

latest technological efficiencies and the best value in a system. On top of this, we add our first class maintenance and support service.

We design and supply systems of any size and our technicians conduct the entire installation. Over the past ten years, **we have designed and installed more than 750 solar systems throughout Victoria and South Australia.**

Whether you are looking to reduce your energy expenses or go completely off-grid with a remote power solution, CHS Solar can help. Contact Simon Hopper on (03) 5381 6400 or e-mail admin@chsgroup.com.au for a free assessment.



Simon Hopper
CHS RENEWABLE
Director

WHAT WE DO

Solar farm mechanical & wiring	Domestic systems
Remote monitoring	Installation upgrades
Agri-business solutions	Commercial systems
Off grid solar supply	Energy retailer & inspection liaison
System maintenance	Power bill analysis





Electrical contractors since 1962, we have a solid reputation in this sector and continue to see electrical services as a hallmark of our business achievements and central to our activities.

Close to 85% of our work is commercially based, balanced by domestic clients and industrial projects. In addition to general electrical work, we take pride in providing specialised electrical services in data & communication, high voltage and other sector-specific work in renewables, grains and mining. Our skill sets have been finetuned for these industries to provide superior technical expertise.

We are established contractors for the water industry, local government, utility companies, hospitals, retail outlets and shopping centres. We also enjoy servicing the needs of our domestic customers in both renewable and conventional electrical work.

Heading up our electrical division is our most senior and experienced electrician, Steve Dymke, who has been with the business for over 40 years. Steve manages a team of six electricians and when required assigns them to complete the necessary electrical work for our other divisions such as civil, plumbing or landscaping. This is

a considerable timesaver for our clients to have all their required tradespeople managed from within the one company.

Quality controlled workmanship is assured with all relevant documentation and drawings submitted to the client at the end of each job.

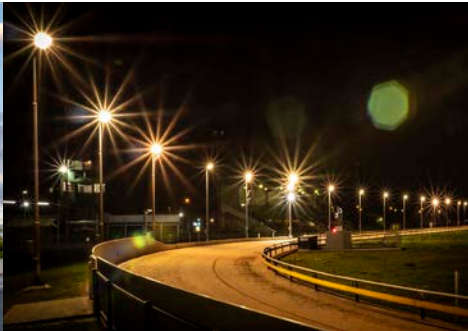
Call 1800 554 488 to speak with Steve for assistance with your next project.



Steve Dymke
CHS Electrical
Horsham Operations

COMPLETED & CURRENT PROJECTS

Client	Description
Target	Horsham Target centre
Horsham Greyhound Club	Track lighting
GWMWater	Rupanyup septic system all electrical
Horsham Rural City Council	Town hall & airconditioning council chambers
RETPRO	Horsham Plaza all electrical services
Best & Less	New Horsham shop wiring fitout



Since 1997 CHS Group has been operating in the specialised field of High Voltage (HV). The HV division is led by highly experienced and authorised HV Linesman and A Grade electrician Barry Hopper who leads an expert team of 10 people.

CHS Group can provide maintenance and service upgrades for power authorities and private customers in the Western district and respond to zone and terminal substation faults. We can also

provide additional staff during peak periods such as bushfires and storms. We have a fully equipped service vehicle, an 18 metre elevated work platform certified for live work as well as miniature elevated work platforms.

Our staff are highly trained and can deliver HV switching, substation installation, testing and commissioning and all overhead power line and infrastructure maintenance.

Call Barry Hopper for further information on (03) 5381 6400 or e-mail admin@chsgroup.com.au



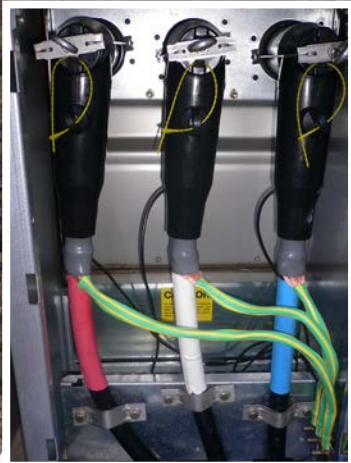
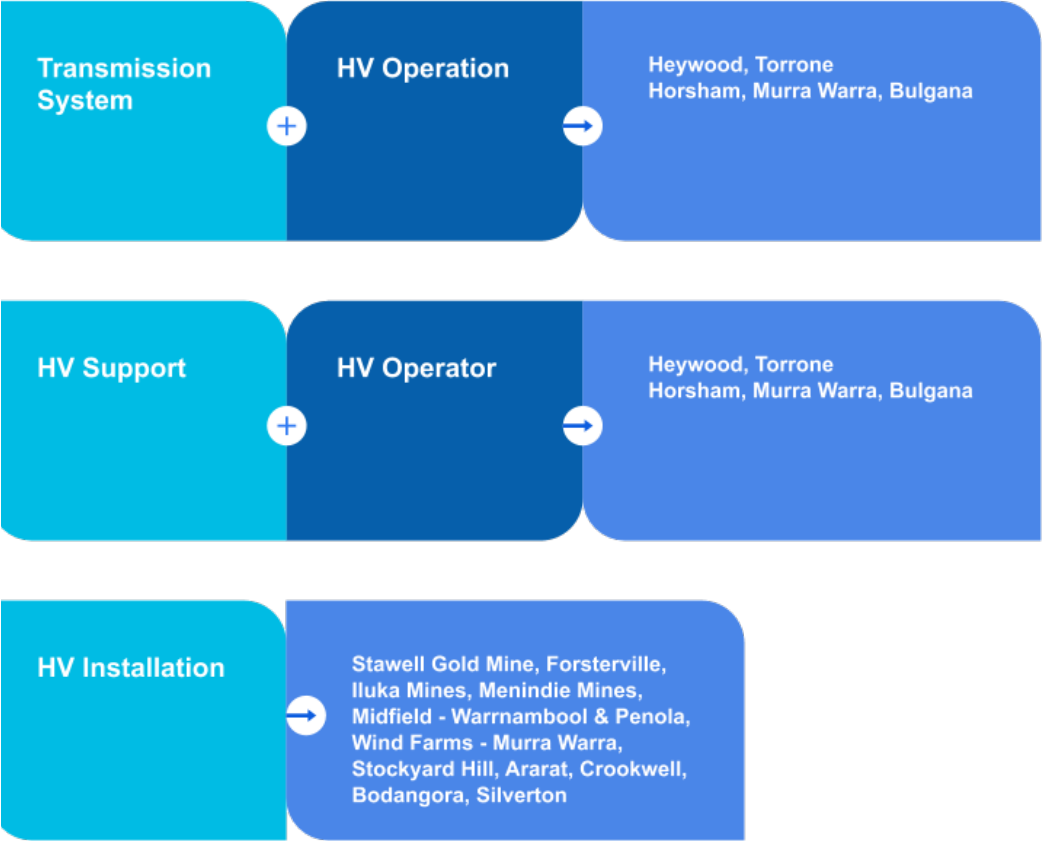
Barry Hopper
High Voltage, Grains & Mining
Division Manager

WHAT WE DO

High Voltage Operation	Maintenance, repairs & alterations
HV Process Documentation	24 hour commercial callout service
VESI compliance	Switching programs
HV Testing	HV Jointing



PAST & CURRENT PROJECTS



SPECIALISED EQUIPMENT

Mobile Test Van
60KV VLF Tester
10K Megger
Ductor Tester
HV Switching Apparel



DATA & COMMUNICATION



Data & Communication has been a core part of CHS Group for more than 25 years. The division has developed significant expertise across a broad range of technologies and is the designated agent for key industry service providers in the region. Our total service area extends from the south-west to the north-west of Victoria and includes 24-7 on-call services to select clients.

We are proficient in all areas of data network cabling, telephone system installation, CCTV and security systems, wireless NBN,

wireless emergency services networks and 5G installations. Routine service maintenance is available for all our installations as well as reactive maintenance in the event of unexpected outages.

Our division is committed to keeping abreast of cutting edge advances in data and communication and as an ISO certified company, we ensure our technicians remain fully trained and competent across the data and communication sector we support. With a single point of contact and our breadth of in-house expertise,

we can deliver solutions for our clients from design through to turn-key completion inclusive of licensing compliance and full ongoing service and support.

Call division manager Terry Arnel today for a tailor-made solution on 1800 554 448 or e-mail admin@chsgroup.com.au



Terry Arnel
Data & Communication
Division Manager

WHAT WE DO

Telephone Systems & Data Networking	CCTV and Intruder Detection Security Systems
Swipe card and other access control systems	Public Address Systems
Nurse Call systems	Hearing augmentation systems
Fire Detection & Occupant warning systems	Emergency Warning & Intercom
NBN Broadband & Wireless Communication	MATV, TV and all AV system installations

AUTHORISED SERVICE PROVIDER FOR



SAMSUNG



COMPLETED & CURRENT PROJECTS

Client	Project
Ericsson	Fixed Wireless NBN transmission network
Visionstream	Emergency Alerting Services Transmission Network
Spirit Telecom	5G Network in Horsham
Downer - Murra Warra Wind Farm	Terminate & Test Fibre Optics between Turbines
Kane Constructions	Horsham Performing Arts Centre
Nicholson Construction	Ararat Performing Arts Centre





CHS Group has been working in the metals and mining sector since 2004. Clients of note include Iluka and Navarre Minerals for whom we have managed multi-year projects in rare earths and gold.

The skill depth of our staff across our divisions and our capacity to deliver both plant and labour requirements within a 24 hour shift cycle, make us the sensible choice when resourcing a project.

Our head office is also **conveniently located in the centre of some of Victoria's largest mineral deposits** reducing the need to fly in and fly out technicians and tradespeople.

We can assist with all phases of your project from initial temporary site establishment, civil works, electrical, data and construction needs through to ongoing maintenance and environmental

rehabilitation requirements.

Call Division Manager Barry Hopper for further information on (03) 5381 6400 or e-mail admin@chsgroup.com.au



Barry Hopper
High Voltage, Grains & Mining
Division Manager

WHAT WE DO

HV Work & Process documentation	24hr maintenance and shutdowns
LV Work	PLC & Scada interfacing
Civil & Infrastructure	Provision of Trade Services & Shift Coverage
Data & Communication	Instrumentation servicing
Building works	Landscaping & land rehabilitation





CHS Group has an established track record as a trusted electrical contractor for the Australian grain industry. Our founder Cec Hopper first started servicing and supporting the needs of local grain industry while working for Noske Flour Mills in the 1950s. Since then we have worked with companies such as GrainCorp and Ridley to support them during complex project work and with ongoing seasonal and routine maintenance.

Located in the heart of Victoria's wheat belt, **we are in tune with the responsibilities and time critical nature of grain receival and processing facilities** and our experience brings a higher level of expertise and responsiveness specific to the industry.

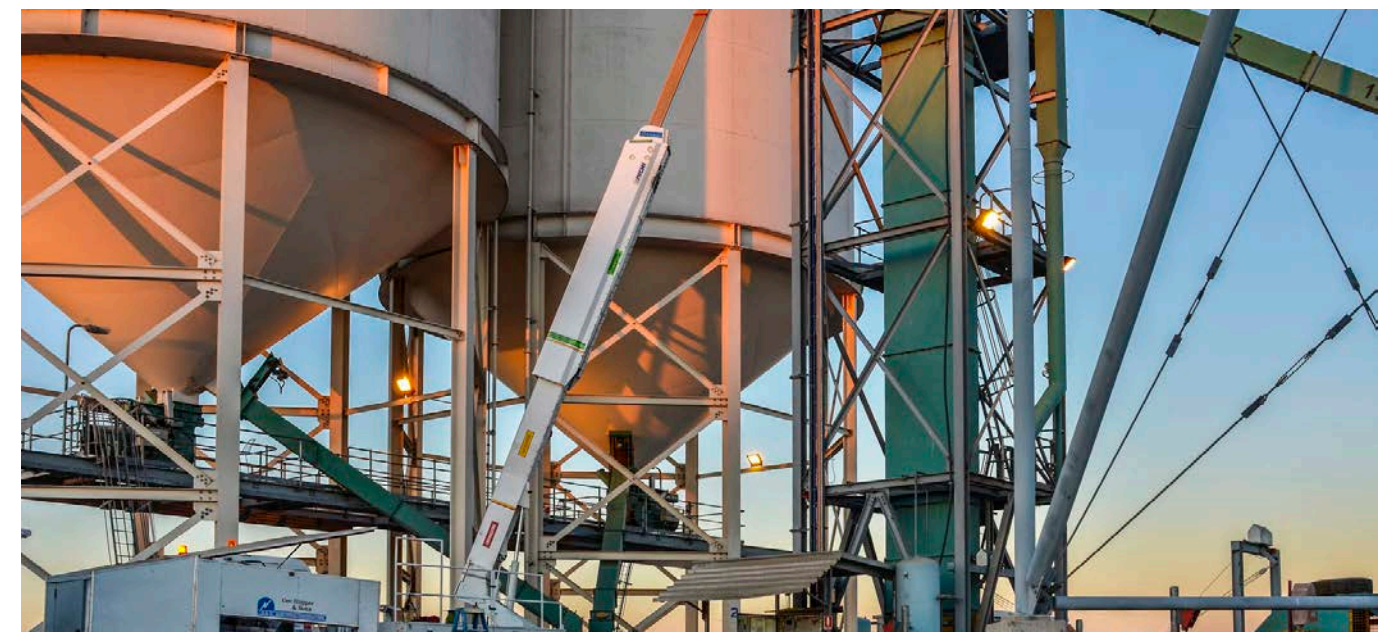
We have supplied and maintained up-to-the-minute technology to keep facilities and their machinery running like clockwork and their personnel safe. We have also tailor made

additional systems when required.

Call Division Manager Barry Hopper for further information on 1800 554 488 or e-mail admin@chsgroup.com.au

WHAT WE DO

Critical Safety Device Installation	24hr maintenance and shutdowns
Pre-Harvest & routine maintenance	Scada interfacing
Instrumentation calibration	Instrumentation servicing
PLC integration	Automation & remote monitoring
Switchboard design & modification	Security & alarm systems



CIVIL & PLUMBING



Our Civil & Plumbing division can competently deliver projects in all areas of hydraulic plumbing and civil services. The division is led by Chris Hopper who manages a team of 25 civil & plumbing employees inclusive of landscapers at Wimmera Aquatrail.

Our staff are certified in Civil Construction, hold Dial Before You Dig certification and are accredited services locators. We also hold Telstra accreditation and

supply qualified spotters and plant operators.

Our **interactive project management system** allows us to resource and monitor all of our projects efficiently within a quality and safety focussed framework whilst keeping our clients fully informed at every stage of a project.

We have a large fleet of company-owned plant and equipment including large diameter

drill bits, compactors and vacuum excavators.

Chris Hopper and his team will be pleased to assist with any of your civil or plumbing queries. Please contact Chris on (03) 5381 6400 or e-mail admin@chsgroup.com.au for further information.



Chris Hopper
CHS Civil & Plumbing
Division Manager

WHAT WE DO

Civil Construction	Damage Prevention Services
Service Location	Surveying, GPS Plotting & Drafting
Vacuum Systems	Concrete Scanning
Directional Boring	Acoustic Locating
Water Pipeline Installations	Confined Space & Dig Free Works
Fire Services Installation	Sewer Installations
Gas Installations	Residential Development



SPECIALISED EQUIPMENT

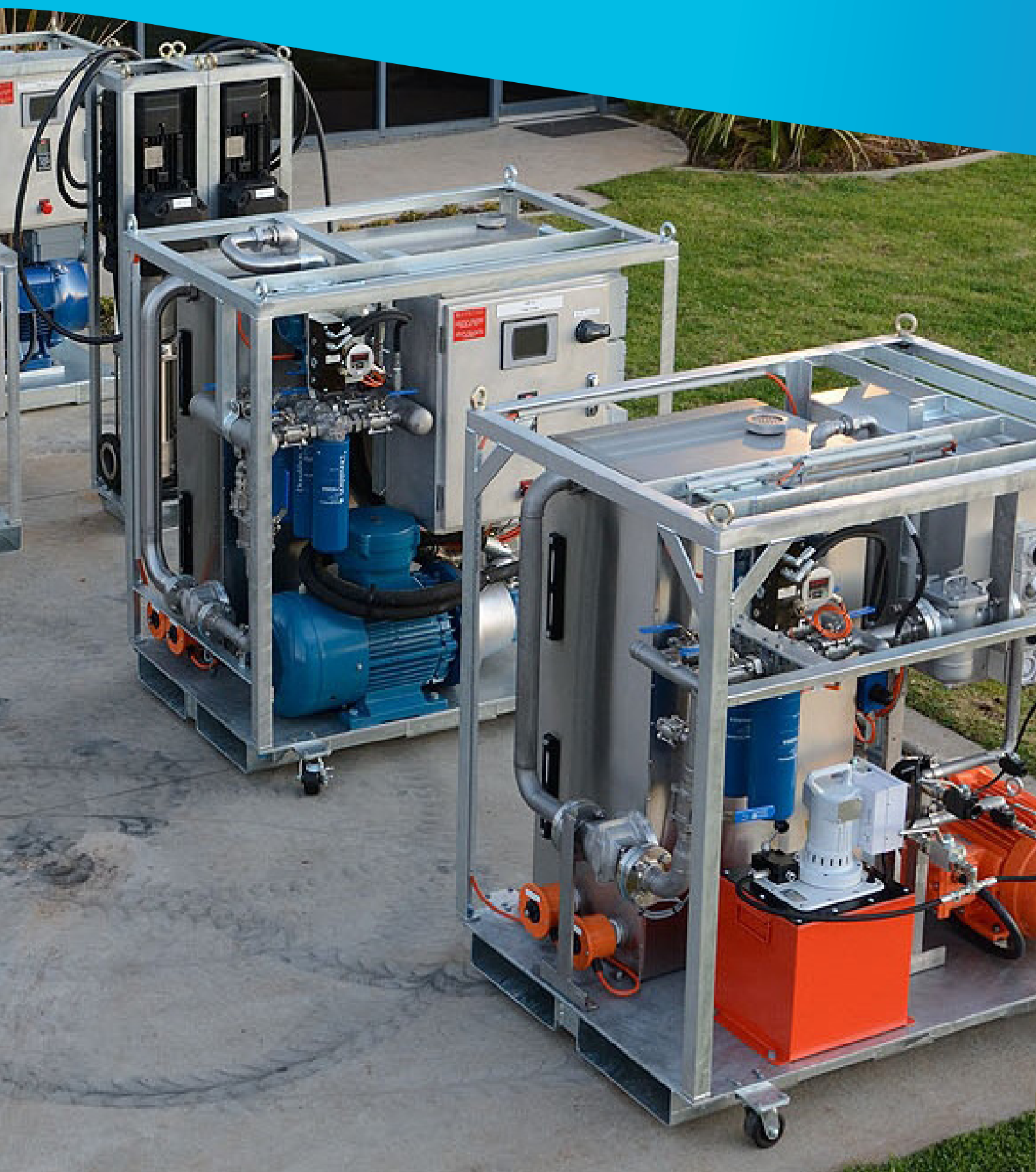
- Rock Breaker
- Vacuum Excavator
- 150MM Drill with 2000m diameter and depth to 8M
- Ground Compaction Plate
- Directional Drills



COMPLETED & CURRENT PROJECTS

Location	Project
Murra Warra Wind Farm	Construction of High Voltage yard
Horsham	Wimmera River Walk Estate
Western Victoria	PowerCor all civil requirements
Western Victoria	GWMWater Pipeline Project

WATER TECHNOLOGY



Water is a precious resource and legislation requires industry to utilise water in a responsible, efficient and environmentally sensitive manner. Australia endures challenging climatic conditions and variable water quality. Based in the Wimmera, CHS Group understands these challenges intimately and consequently, we have been supplying water treatment solutions to our clients for many years.

Whether it is a large-scale DAFF installation or a smaller scale instrumentation skid, we are involved in all stages of the design, manufacture and installation of these systems including ongoing maintenance and remote

monitoring using our proprietary AirApp software. With ready in-house access to a capable team of electrical, civil and engineering experts we can streamline delivery for our clients and see you operational in as little as a week. Our in-house designed plant is also able to run off the grid using a combination of renewable energy sources thanks to our renewables expertise.

Our clients are diverse and include GrainCorp, GWMWater, Coliban Water, Wannon Water, Johnson Asahi, AGT Foods, JK Milling, Origin Energy and Edmonds Engineering.

Our Water Technology division comprises 25 staff including an engineer, instrumentation technicians, application specialists, electricians and labourers. Ash Hopper is the division manager, an A Grade electrician with core skills in project management, estimating, OHS and AutoCAD designing. For further information on our water technology services please call Ash on 1800 554 448 or e-mail admin@chsgroup.com.au



Ash Hopper
Water Technology
Division Manager



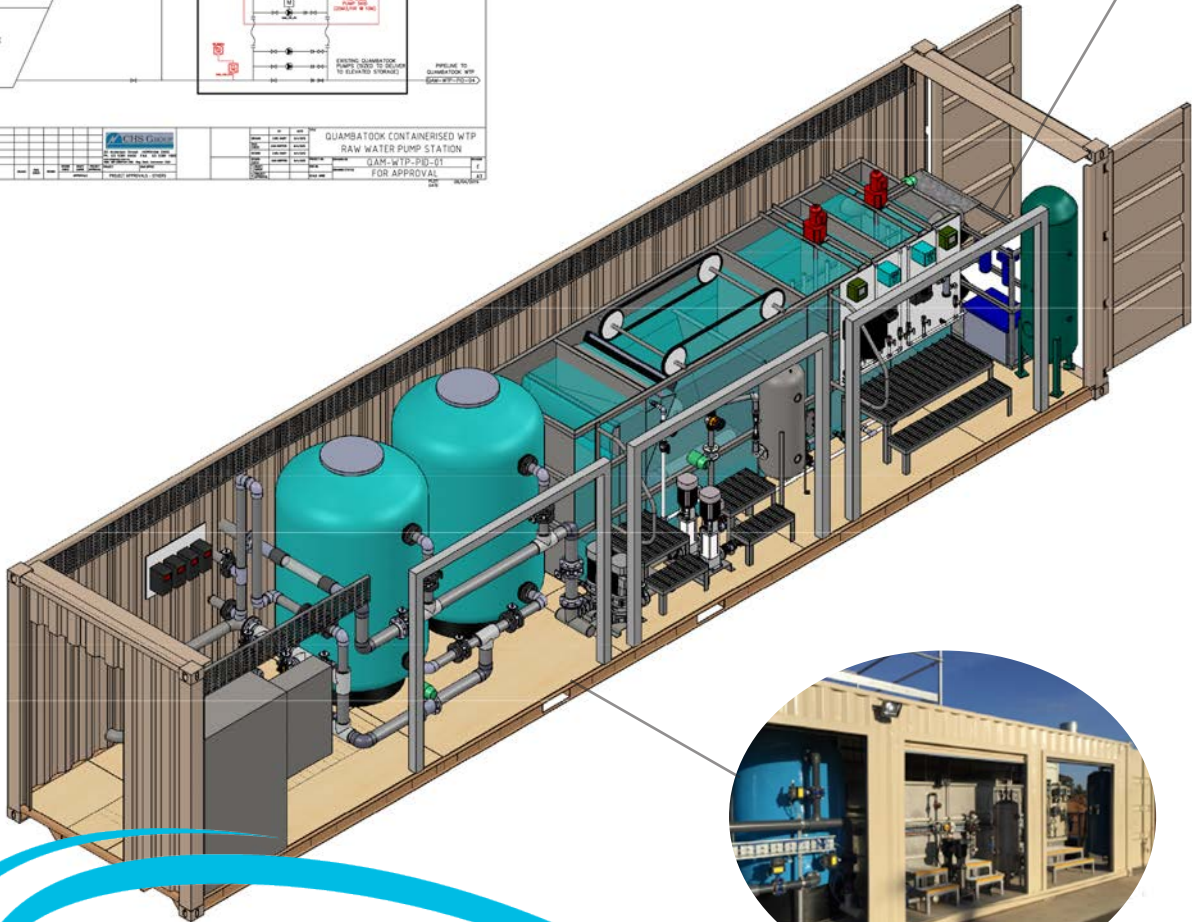
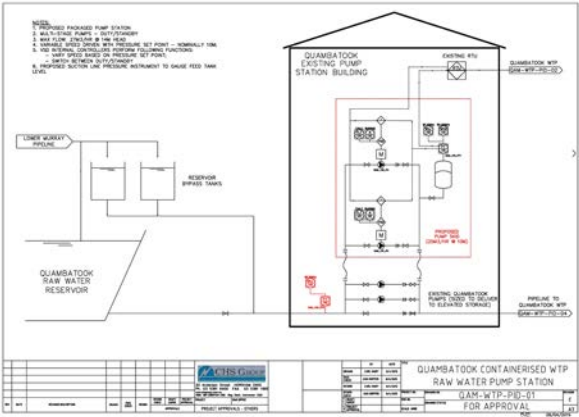
**AUSTRALIAN
WATER**
ASSOCIATION



**CEC HOPPER
& SONS**
ELECTRICAL CONTRACTORS
REC 1222

BESPOKE DESIGN PROJECTS

One Package Water Treatment Plant designed for GWMWater's Quambatook facility



KEY FEATURES

- Produces high quality drinking water from raw water
- Includes CHS proprietary AirApp remote monitoring
- Installed, tested & commissioned in as little as one week

WHAT WE DO	
Water Treatment Plant Design	Chemical Dosing Units
CAD drawing & machine safety	Scada interfacing
Thermal Imaging	Instrumentation skids & servicing
Telemetry	Automation & remote monitoring
Machine safety	Fault Finding



COMPLETED & CURRENT PROJECTS

Location	Project
Horsham	Water Meter Replacement Program
Quambatook	DAFF
Warracknabeal & St Arnaud	WTP



Onsite Engineering has been a part of our business since 2011 and is renowned for producing many fine examples of custom-built engineering for clients. We are specialists in stainless steel fabrication, aluminium welding and general engineering.

This division is headed up by Kevin Gardner who is a qualified maintenance fitter with stainless steel pipe welding and fluid power certificates. Kevin has significant experience supplying services to the water treatment and food production industries and the mining sector. His division is well resourced and his

team can competently tackle many industry specific projects. Within the team there are seven full time fabricators and a part time fitter and turner.

Onsite Engineering has a modern workshop with a guillotine and a pan brake to 3mm capacity and a CNC Plasma cutting system up to 20mm plate. There is also a machine shop with milling machines and lathes up to 3m between centres.

Working closely with our water technology division, Onsite Engineering is part of the design team for many water treatment

facility projects. A notable example of this collaboration is a containerised water treatment plant built for GWMWater.

Our team is passionate about what they do and will deliver your project to the exact specifications whether it is a CAD drawing or a hand drawn sketch. Please give Kevin and the team a call on (03) 5381 6400 for a quote on your next engineering project.



Kevin Gardner
ONSITE ENGINEERING
Divisional Manager

WHAT WE DO

Welding	Access walkways
Stainless Steel Fabrication	Custom fabrications
Piping systems	Plasma and laser cutting
Sheet Metal Fabrication	Water industry engineering



ONSITE
ENGINEERING
SERVICES



CHS Construction Pty Ltd was founded in 2017 when CHS Group and Merlo Building Contractors partnered to acquire Kimpton Builders, a Horsham based building contractor. CHS Construction is managed by director Jason Merlo and employs more than 30 people. We have offices across Western Victoria and our service area covers over 500 square kilometres from Mildura to Hamilton.

Our primary aim is to deliver an excellent customer experience. For us, this means providing a host of trades under the one roof to assure quality workmanship and a smooth-running, stressless

construction project for our clients. **The combined expertise of CHS Group's civil and electrical services along with our talented team of builders and allied trades allow us to tackle any project from the ground up with ease:** new homes and offices, property services, maintenance, renovations, extensions and insurance repairs.

We are a member of the Master Builders Association of Victoria and a registered building practitioner. Our business is recommended by many satisfied clients and we have a longstanding contract delivering building and maintenance works

for the Property Services division of the Department of Health and Human Services.

We are proud of our achievements to date and enjoy delivering quality services to government departments and the wider community.

For all construction enquiries, please call us direct on 1800 554 488 or email admin@kimptonbuilders.com.au



Jason Merlo
CHS CONSTRUCTION
Director

WHAT WE DO

New Dwellings	Commercial Buildings
Renovations	Property Upgrades
Amenity Installations	Property Maintenance
Aged Care Fit-outs	Disability Upgrades
In-House Colour Consultations	Insurance Repairs





LANDSCAPING



Wimmera Aquatrail is our dedicated landscaping division as well as a retail nursery and landscaping supplies centre for the general public. The business was founded in 1987 and became part of CHS Group in 2007.

Landscaping is led by Stuart Farr who has been with the business for 10 years and has a Cert III in Landscaping Construction. Stuart manages a team of four staff members and can handle any project from a small domestic irrigation repair through to large scale grounds redevelopment or new landscape design.

Some notable projects delivered by the landscaping division include Horsham College & Horsham Special School, Edenhope and

Warracknabeal hospitals and Dimboola, Nhill and Ararat football ovals. The team also often work hand in hand with our civil division for large, industrial projects. Call Stuart via our head office on 1800 55 44 88 for your next project, big or small.



Stuart Farr
Landscaping
Wimmera Aquatrail

The retail nursery stocks an immense array of indoor and outdoor plants, turf, advanced trees, pumps, pressure washers, ponds and filtration systems, garden features and landscaping materials; the list is endless and up to the minute in garden design trends.

Luke O'Connor is head of the retail division of Wimmera Aquatrail. Luke has a Cert III in Horticulture/ Turf Management and manages a staff of 10 employees. The team is passionate and knowledgeable and strive to provide you with everything you need to have a thriving garden and beautiful setting at home or for your office surrounds.

Please call Luke and the team on (03) 5382 0473 or simply call into the nursery at 2 Apricot Avenue, Horsham and we will be only too happy to assist.



Luke O'Connor
Retail Manager
Wimmera Aquatrail

WHAT WE DO

Landscaping	Site rehabilitation
Irrigation systems	Paving & Decking
Pumping systems & service	Clean fill
Retail and wholesale nursery	Pressure washing
Road bases	Sports ground returfing



