

LET THEM COME... AND LET US MAKE CLEAR THE WAY.



We invite you to join this movement of faith and generosity: to pray, to give, and to share in creating a space that embodies who we are and what we believe. Together, we can make sure St. Paul's remains a place of warm welcome, lively community, and transformative mission for decades to come.

Pray with us: *"God, what do you want to do through me, to make all welcome?"*

Every gift is an act of faith and an opportunity to help others experience God's grace.



LET THEM COME

A Vision of Welcome,
Accessibility, and Belonging



"Let the children come to me...for it is to
such as these that the kingdom of heaven belongs."
~Matthew 19:14

60 Years of Welcome

In 1966, St. Paul's was birthed by 19 people gathered in a living room. A year later, 61 founding members chartered a new United Methodist Church, and the congregation moved their worship services to Peebles Fire Hall. In 1969, they built a building of their own - a place that would welcome hundreds to "care and dare to reach out."



For nearly sixty years, St. Paul's has been a community where everyone belongs. We've gathered for worship and sent people out in service, building relationships, nurturing faith and offering compassion to our neighbors.

Our story is one of welcome, faith, and purpose.



Now, it's time to ensure that our physical space reflects the heart of our mission - so that our welcome may continue to grow for another 60 years.

**A place where all can come,
belong, and be transformed
by God's grace.**



Milestones of Faith

1966-1967 — A Dream Becomes a Church

Nineteen people gather in a living room; by year's end, sixty-one charter members sign St. Paul's charter. Worship begins in the Peebles Fire Hall — humble, hopeful, and full of heart.

1970s — Growing in Faith and Service

A childcare and preschool open to serve local families. The "Chapel in the Woods" and education spaces expand our ministry footprint.

1990s — Caring and Daring to Reach Out

A generation of mission-minded members extends St. Paul's ministries locally and abroad.

2010s — Expanding the Welcome

Interfaith Friendship Dinners, new worship expressions, and partnerships with *The Nyadire Connection* deepen our witness beyond our walls.

Today — Preparing for What's Next

Sixty years later, we continue to live our mission: welcoming all people, nurturing faith, and working for justice and peace. Through our "Let Them Come" Campaign, we're renewing this building to embody that welcome for generations to come.

1969 — A Home on Ferguson Road

The first church building rises — a gift from the Western Pennsylvania Conference. Wooden beams still frame the sanctuary today, reminders of faith built to last.

1980s — Building to Serve

New sanctuary, classrooms, and parking expand our reach. St. Paul's helps launch *North Hills Community Outreach* and shelters flood victims in 1986. Faith finds action in every corner.

2000s — Building for Ministry

The Christian Life Center and expanded sanctuary open, welcoming worshippers, youth, and community groups. *Kidz Korner* and *No Mission Impossible Club* nurture the youngest disciples.

2020s - Growing Healthy & Whole

Developing mental health ministries, spiritual formation opportunities, and community partnerships strengthen whole-community wellness.

“ At St. Paul's, I feel affirmed, loved, befriended, accepted, educated, and inspired to give back. — Anne ”

The Values that Guide Us

This project is not just about updating a building, it's about living our values more fully. Each improvement removes barriers and opens doors, allowing our mission to flourish in new ways.

Accessibility & Welcome

Our church must be a place where everyone, regardless of ability, age, or circumstance, can enter freely, move comfortably, and participate fully in the life of the church.

- A new full-service elevator will connect every floor of our building.
- Reconfigured parking and new entrances will make arrival easier and safer.
- Restroom renovations and improved interior navigation will ensure dignity and ease for all.
- A new hospitality center and café space will create a meaningful connection the moment people walk through our doors.



Hospitality is at the heart of who we are, and our building should say, "You belong here."

Safety & Security

Our ministries need spaces that are safe, secure and visible. We safeguard our community not out of fear, but out of love and responsibility for those entrusted to our care.

- Upgraded fire, communication, and access systems will provide safety and peace of mind.
- Improved sight lines and secure entries will protect children and staff during the week.
- A new reception area will offer welcome and visibility for all who enter.

Sustainability & Stewardship

We are called to care for creation and use our resources wisely. Every system we upgrade, from heating and air to lighting and insulation, reduces waste and energy use while extending the life of our building.

- New HVAC and efficient lighting will lower costs and environmental impact.
- Resurfaced parking and drainage improvements will protect our property for decades to come.
- Updated finishes and materials will reflect beauty, function, and care.



Vibrancy of Space

The life of St. Paul's is vibrant! Worship is alive, ministries are growing, and new faces appear every week. Our building should mirror the energy and joy of our ministries, and our space reflect the warmth of our people.

- The sanctuary and chapel will be updated with new lighting, sound, and accessibility features for worship leaders and musicians.
- Wesley Hall and classrooms will be redesigned for flexible use, with climate control and updated finishes.
- Outdoor gathering spaces will provide room for connection, picnics, and worship under open skies.



Our Vision: A Place for Belonging

We envision a **barrier-free, fully accessible sacred space** where:

- Children are nurtured in safety and joy.
- Visitors find a sense of belonging the moment they arrive.
- Worship engages both in-person and online with excellence.
- Creation is honored through responsible stewardship.
- Every person can come just as they are and leave transformed.
- Our congregation is sent out in ministry beyond our walls.
- Community partnerships strengthen as we serve and share generously.



“ Our child grew up at St Paul's and people care and support them just like when they were small. It's the only church they don't feel judged by. – Amy ”



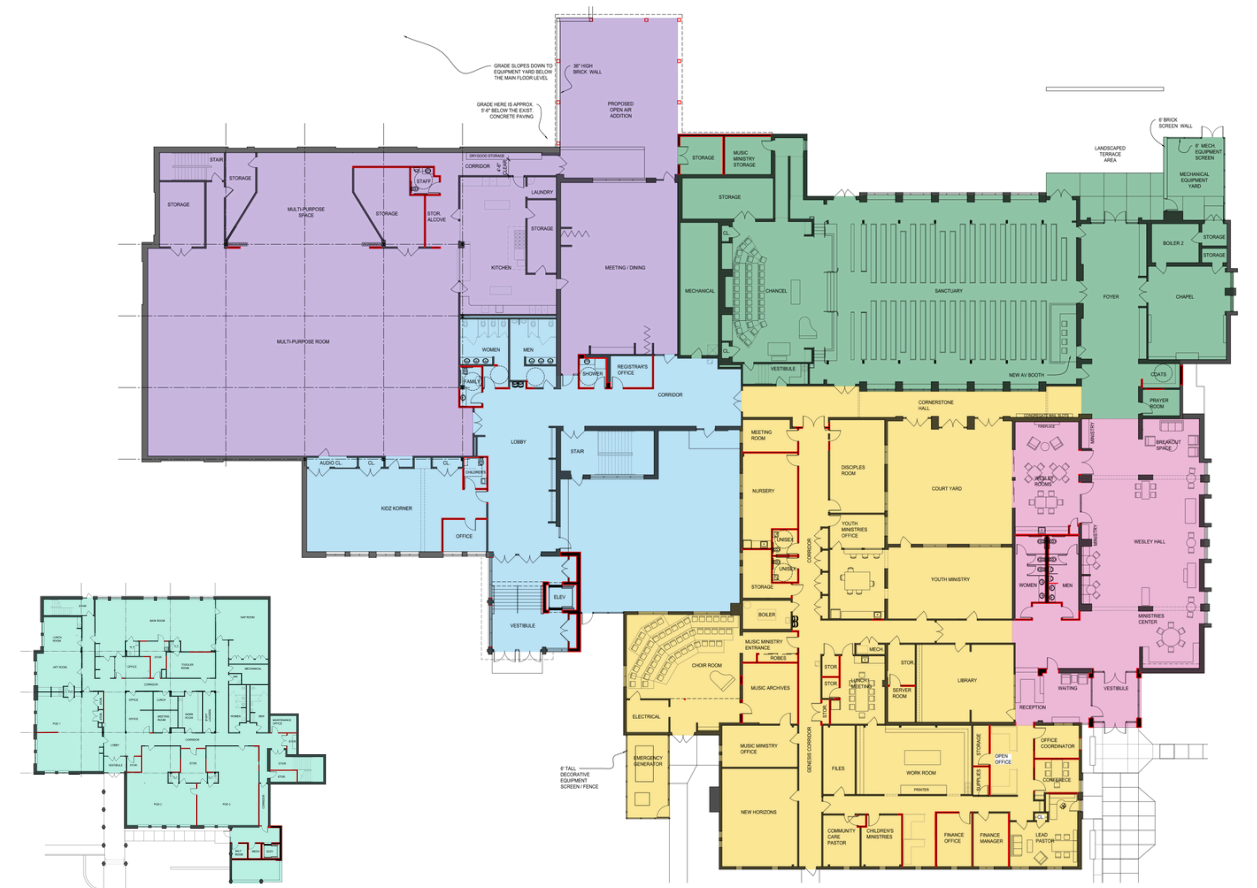
Building for the Next Generation

Those who came before us built this church with faith and sacrifice. Now, it's our turn to ensure that the next generation inherits a church as vibrant and welcoming as its people.

Building plans include:

- Updated and efficient lighting.
- Improved security and fire safety systems.
- Modernized HVAC and airflow handling.
- Updated finishes throughout.

“ We desire for our kids to have strong faith-based connections in an active ministry with approachable adults to turn to when big questions and worries arise. I know we have that here. – Danielle ”



First Impressions: Exterior & Wesley Hall

Approximately \$2.1 M

- Parking lot resurfacing with industrial-grade drive lanes and improved drainage.
- New, accessible main entrance with secure reception desk.
- Interior renovations in Wesley Hall and the Wesley Rooms.
- Updated & expanded restrooms to meet ADA code.
- New road sign and interior and exterior directional signage.



Renewed Worship Spaces: Sanctuary & Chapel

Approximately \$1.3 M

- Updated lighting, sound and video capabilities in sanctuary
- Sanctuary platform reconfiguration, adding railings and space for musicians.
- Additional dedicated storage for handbells and worship supplies
- Renovated tech booth.
- Improved climate control in both sanctuary and chapel.
- Reconfiguration of chapel storage and space for additional columbarium installations.



Updated Mission & Ministry Spaces: Genesis Hallway & Classrooms

Approximately \$1.2 M

- Upstairs nursery space with adjacent toddler room, accessible to sanctuary and restrooms
- Reconfigured music wing, adding more rehearsal and storage space
- New single-stall restrooms
- Multiple added storage closets along hallway
- Church office suite adapted to current needs



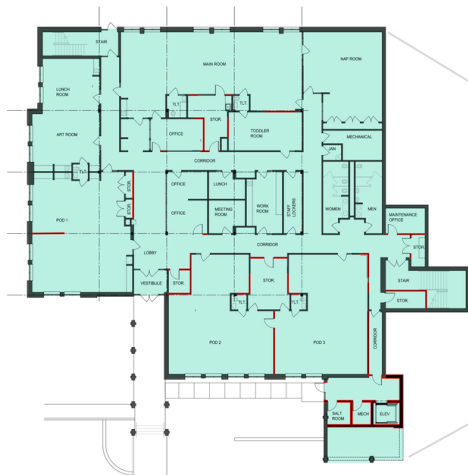
“After moving here we felt isolated without our family or friends. Gratefully, we found St. Paul's which provided us with an opportunity to worship and grow in our faith while also connecting us with an incredibly welcoming community. We have formed wonderful friendships that have been and continue to be such a blessing to me and my family. – Amanda



”

Accessibility & Security: Community Life Center & Childcare Approximately \$2.4 M

- Full-service elevator to provide interior accessible access to all floors.
- Enclosing of CLC entrance, creating secure and weather-proof entry.
- Lower-level sidewalk access to elevator at Preschool/Childcare entrance.
- Installation of building-wide security and alert systems.



(Downstairs Preschool/Childcare areas)

- Renovation of children's areas for improved security and updated finishes.
- Updated children's restrooms.
- Improved access & functionality of storage areas

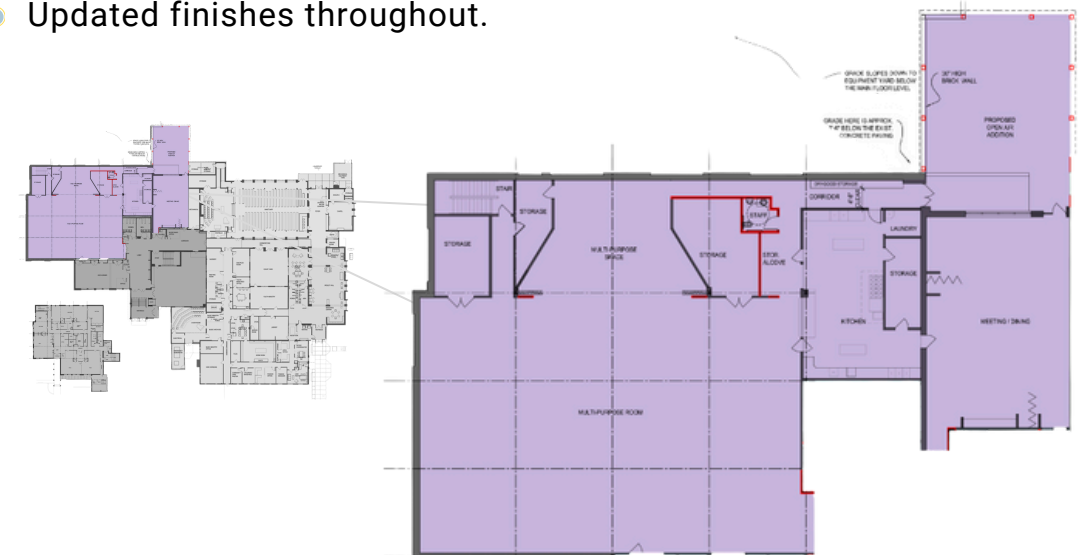


“ Cassie loves coming to St Paul's for dinner and events! And she always invites friends along. ”



Enhanced Fellowship & Community Spaces: Dining, Kitchen & Fellowship Hall Approximately \$800,000

- Kitchen updates.
- Relocation of Kidz Korner offices for director accessibility to families.
- Restroom updates, including child and staff restrooms for Kidz Korner and family restroom in CLC lobby.
- Expansion of storage space for tables, chairs, and large equipment.
- Reconfiguration of stage area to create multiuse flex space.
- Addition of outside covered space for picnics and outside learning.
- Updated finishes throughout.



This is more than construction, it's continuation. It's our way of saying:

LET THEM COME.