

MACSEP small oily water separators

The MACSEP range of small oily water separators have been designed as “plug and play” solutions for industries where oil contaminated stormwater or wastewater is an issue. They are delivered with all the components required for operation, and you simply connect into the application.



Particular attention has been paid to meeting the requirements of the New Zealand power generation and distribution industries, especially for treating oil contaminated stormwater which collects in transformer bunded areas at substations and small power stations.

Sizes available: 1,500, 3,000, 4,500, 6,000 & 10,000 litres/hour

The MACSEP range of small oily water separators have three levels of protection to prevent oil entering the environment in the case of a major oil spillage:

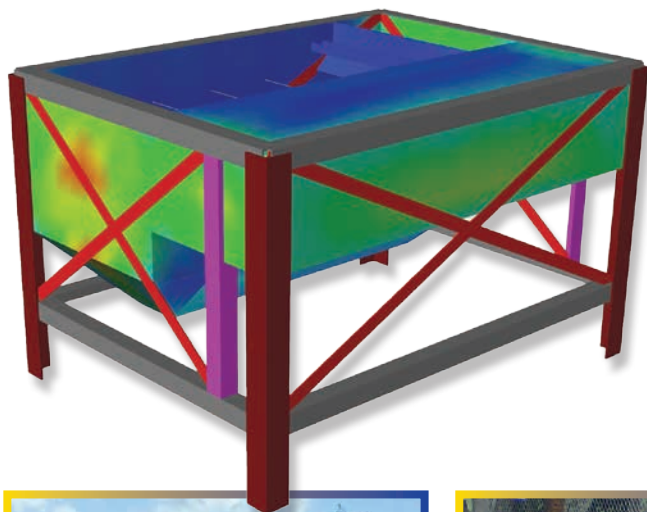
1. A high level sensor in the waste oil tank provides an alarm signal and shuts down the oil separator transfer pump.
2. A high level overflow drain allows oil to drain back to the pump chamber/containment tank.
3. A relay is included in the oil separator control system which accepts an alarm signal from the client's SCADA to shut down the oil separator transfer pump.

All units are supplied complete with a slow speed helical rotor pump, stainless steel control panel with comprehensive alarms and float switches.

**Certified to
meet NZ seismic
conditions**



Specialists in Oil Water Separation



Each model is designed using SolidWorks for accuracy & seismically modelled to ensure they meet NZ conditions.



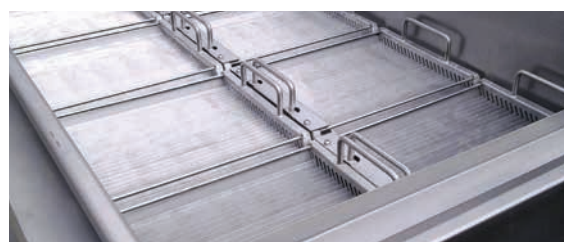
- 304 stainless steel construction (316 SS optional)
- Removable stainless steel plate packs
- Hinged and lockable lids
- Integral waste oil tank including a high level switch
- Slow speed Mono helical rotor pumpset including anti-condensation heater and marine epoxy paint system
- 304 SS IP65 control cubicle including auto internal lighting, hour meter, anti-condensation heater
- Control system indication & alarms including; pump run, pump fail, oil tank high level, sump high level, plant not ready
- Pump sump/catch tank level switches (3)
- Supplied pre-wired & pre-plumbed
- 50 year design life
- Certified to meet NZ seismic conditions
- 2 year mechanical warranty

Construction materials

The standard material of construction for the oily water separator and control panel is 304/2B stainless steel. If the oil separator is to be located in a corrosive environment (eg location subject to wind blown sea spray or geothermal activity) or subject to high chlorides in the influent then an alternative grade of stainless steel such as SS 316 or SS 2205 should be considered.

Industry applications

- Power generation and distribution
- Refineries, terminals, tank farms
- Service stations
- Small and large workshops
- Bus and coach depots
- Vehicle, earthmoving equipment washdown
- Stormwater runoff



View of removable Plate Packs.

Ancillaries

- Full bore swing check type foot valve in 316 SS
- Purpose designed strainer (in 316 SS) to go with the above foot valves
- Two piece float switch bracket (negates the need to enter confined spaces)
- Reinforced UV and fuel resistant hose and fittings for flexible connections to the MACSEP oily water separator
- Slow speed helical rotor or diaphragm pumps
- Ball type and lever type float switches
- Electronic level switches (ultrasonic, guided radar etc)

MACSEP small oily water separators - size range

Model	Design Flow Rate	No. of Plate Packs
MACSEP-1500	1500 l/h	2
MACSEP-3000	3000 l/h	4
MACSEP-4500	4500 l/h	6
MACSEP-6000	6000 l/h	8

The MACSEP-10000 has a design flow rate of 10,000 l/h and 10 larger plate packs

MACSEP Limited

PO Box 185 Whangaparaoa 0943, Auckland, New Zealand
 Phone: +64 9 424 3719 Mobile +64 274 514 044
 Email: info@macsep.co.nz Web: www.macsep.co.nz