

SPECIFICATIONS

		N6+	N6H
Distance Measurement			
Reflector Range		5000m*1	
Reflectorless*2 Range		1000m or 1500m	
Accuracy	Reflector	$\pm(2+2\text{ppm} \times D)\text{mm}$	
	Reflectorless	$\pm(3+2\text{ppm} \times D)\text{mm}$	
Measuring Interval	With Reflector	Fine < 0.3s, Tracking < 0.1s	
	Without Reflector	0.3s-3s*3	
Others	EDM Type	Coaxial	
	Minimum Reading	0.1mm	
	Unit	Meter/ US.Feet/ Int.Feet/ Feet-inch	
Angle Measurement			
Accuracy		2" or 5"	
Reading System		Absolute Encoding	
Circle Diameter		79mm	
Minimum Increment		1"/5"	
Detection Method		Horizontal: Dual, Vertical: Dual	
Telescope			
Image		Erect	
Tube Length		154mm	
Effective Aperture		45mm (EDM:50MM)	
Magnification		30x	
Field of View		1°30'	
Minimum Focus Distance		1.2m	
Resolving Power		3"	
Tilt Sensor			
System		Dual Axis Liquid-Electric	
Working Range		$\pm 4'$	
Accuracy		1"	
Communications			
Communication Ports		USB Port	
Data Interface		USB Stick, Bluetooth	
Effective Range of Bluetooth		10m	
Plummet			
Laser Plummet		$\pm 1.5\text{mm}$ at 1.5m	
Optical Plummet (Optional)		Erect Image	
Magnification		3 X	
Focusing Range		0.5m~ ∞	
Field of View		5°	
Auto Height			
Working Range		-	0.5-3m
Min. Reading		-	1mm
Accuracy		-	$\pm 1.5\text{mm}$
Guide Light			
Type		LED	
Wavelength		Red 635nm/ Green 590nm	
Effective Range		200m	
Power			
Type		Rechargeable Lithium battery	
Voltage		7.4V DC, 5000mAh	
Operating Time		16 Hours*4	
Level Vials			
Plate Vial		30"/2mm	
Circular Vial		8"/2mm	
Others			
Dust and Water Protection		IP55	
Display		Dual Side, LCD 6 Lines	
Keyboard		Alphanumeric 24 Keys	
Operating Temperature		-20°C ~ +50°C	
Atmosphere Correction		Manual Input, Auto Correction	
Earth Curvature Correction		Manual Input, Auto Correction	
Prism Constant		Manual Input, Auto Correction	
Dimension		190mm x 195mm x 335mm	
Weight (approx..)		5.5kg	

Note: all information above is subject to change without any prior notice.

STANDARD PACKING LIST

Main unit	1x
Lens cover	1x
Battery holder	1x
Battery LB-01	2x
Tools pouch	1x
Manual	1x
Charger LC-10	1x
Reflective sheet	1x
Carry case	1x
Belt	2x

- *1. Good Conditions: good visibility about 20km, overcast, no scintillation.
 *2. Under Kodak Gray (90%). Measuring distance may vary depending on targets and the conditions.
 *3. Measuring time may vary depending on measure distance and conditions. For the initial measurement, it may take a longer time.
 *4. Battery life specification at 25°C . It might be shorter in low temperature or if the battery is old.

OPTIONAL ACCESSORIES



ATS-2 Wooden Tripod
 NLS-15 Prism Pole
 TK21T Prism Set

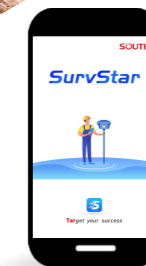
SOUTH
 Target your success

N6 Series

Best-Selling Total Station



- 2" / 5" Accuracy
- Long-Range Prism (5000m) and Non-Prism (1000m/1500m) EDM
- Trigger Key, Hot key for faster operation
- Cable-Free Connection by Wireless Bluetooth or USB Stick
- Bigger internal memory, Save 96000 data block
- Longer operation Time up to 10 hours per battery



Version: N6 series 1.0

SOUTH
 Target your success

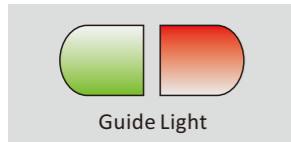
SOUTH SURVEYING & MAPPING TECHNOLOGY CO., LTD.
 E-mail: mail@southsurvey.com
 http://www.southinstrument.com

You Local Authorized Dealer

What is new for N6 series

Outstanding Performance and Versatile Functions

Red/Green Guide Light



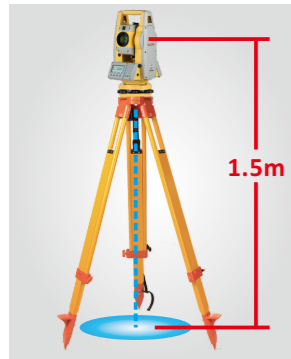
Guide Light

- Red and green guide light is built into the EDM as a standard feature.



- The guide light is extremely visible and easy to get into the correct direction line, enhancing the work sufficiency of stake out in the range of 200m.

Auto Height



- Get the instrument height by a simple button press.
- Save time and cost by accurate measurement.
- No more mistakes from manual operations.
- Not necessary to take extra accessory, e.g. tape.

Greater Battery Capacity



- New seat charger, more convenient charging
- 10 hours to 16 hours, extra long battery life



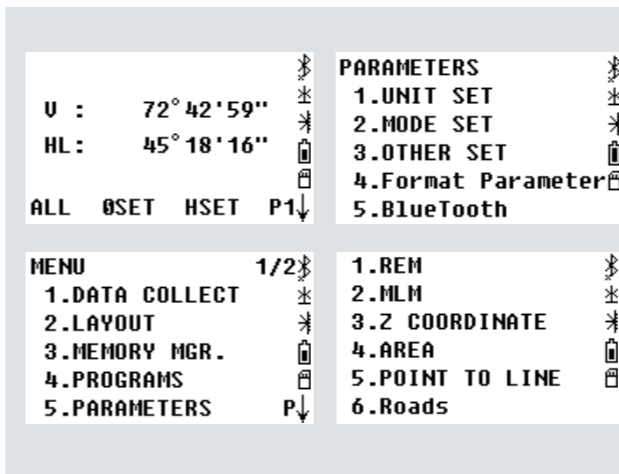
Easy-to-use Onboard System

New tool-bar design on the side of screen, which helps you check the status of your N6 series Total Station in real-time.

Choose N6 series to meet your topographic needs as a superior mates. It offers a clear-to-view onboard system by it's easy-to-use but powerful programs.

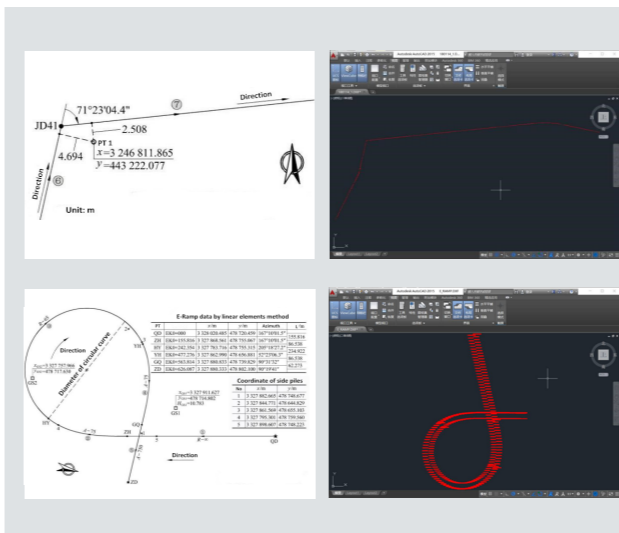
Such as:

- ▶ Offset: angle, distance, column offset
- ▶ Point to Line: to calculate the coordinate of occupied point based on a known point and line
- ▶ COGO: calculation of coordinate geometry



Optimized Road Program

The optimized road program offers a smart solution for road designing, editing and laying out. The new road program will calculate the horizontal and vertical curve in arbitrary geometric curved algorithm.

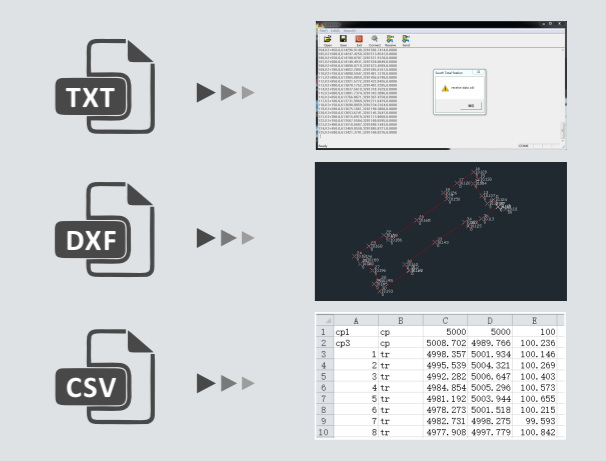


New Hot Key Functions and BT Data Transfer

12 number key, 12 short path directly enter the application, less operation steps and higher efficiency.

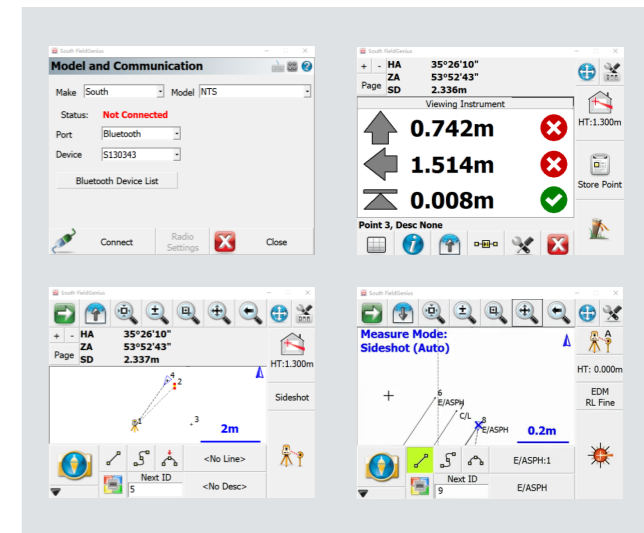
Cable free data transfer work with transfer software, one key export to USB stick, generate TXT, CSV, DXF files.

7 STN Setup	8 BS by XYZ	9 BS by Angle
4 Resection	5 Create new job	6 Select XYZ call file
1 Memory manage	2 View meas file	3 View XYZ file
0 Stake Out	• Tilt	- Data



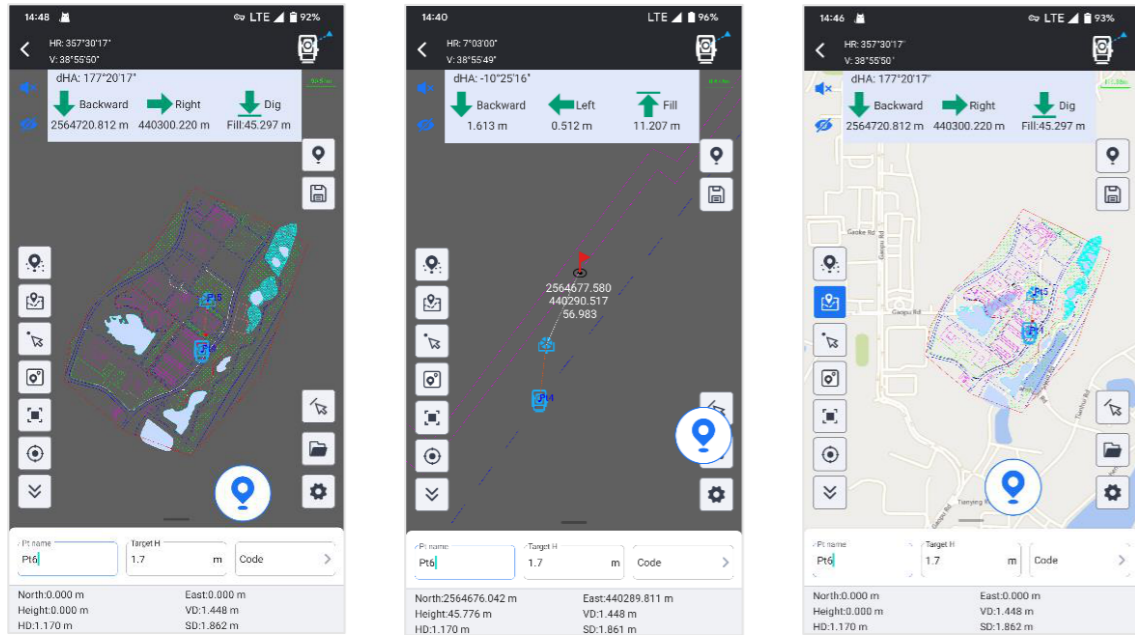
Work on Data Collector

After added the Bluetooth module on N6 series, you will have more possibilities to extend the applications on Total Station. With open source commands, you are easy to establish the communications between the N6 series and other software you wish to use.



Total Station Module of SurvStar App: Four Main Features to Give You More Power & Freedom

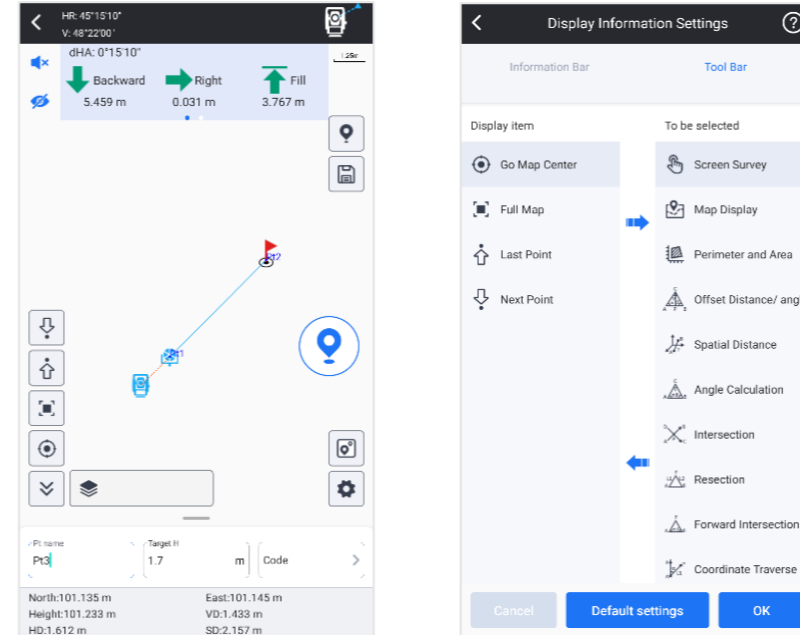
CAD Stakeout: Increasing Productivity & Decreasing Error



CAD Stakeout allows you to import CAD basemap and stakeout it, without input point coordinates one by one.

When you need, you can connect to your local online map and overlap it to CAD basemap, to increase the precision of your job.

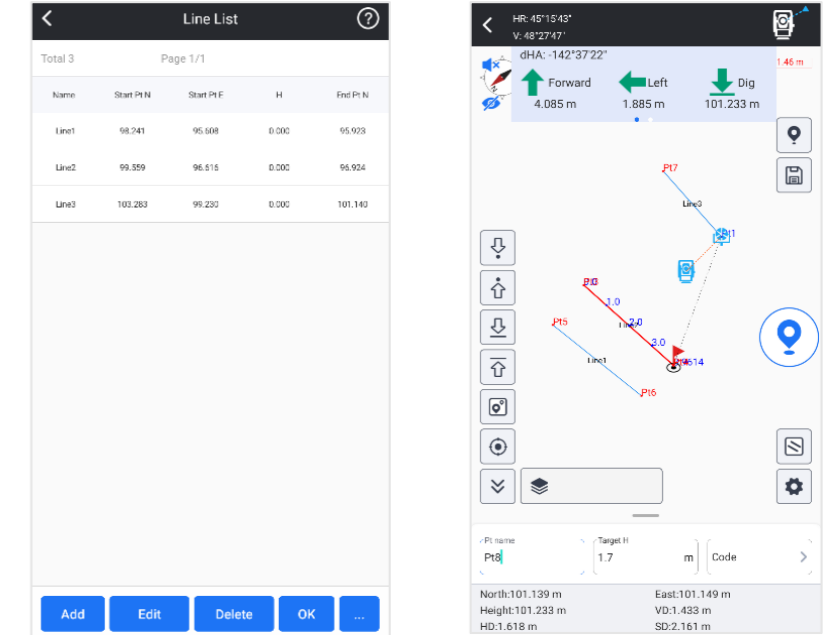
Point Survey & Stakeout: More Ease and Convenience



With graphic display, now it is easy to you to observe the relation between occupied point and target points. It will help you to make less mistakes when measuring many points.

The stakeout program screen displays information more completely, indicates target points more intuitively, your workflow will be smoother than before.

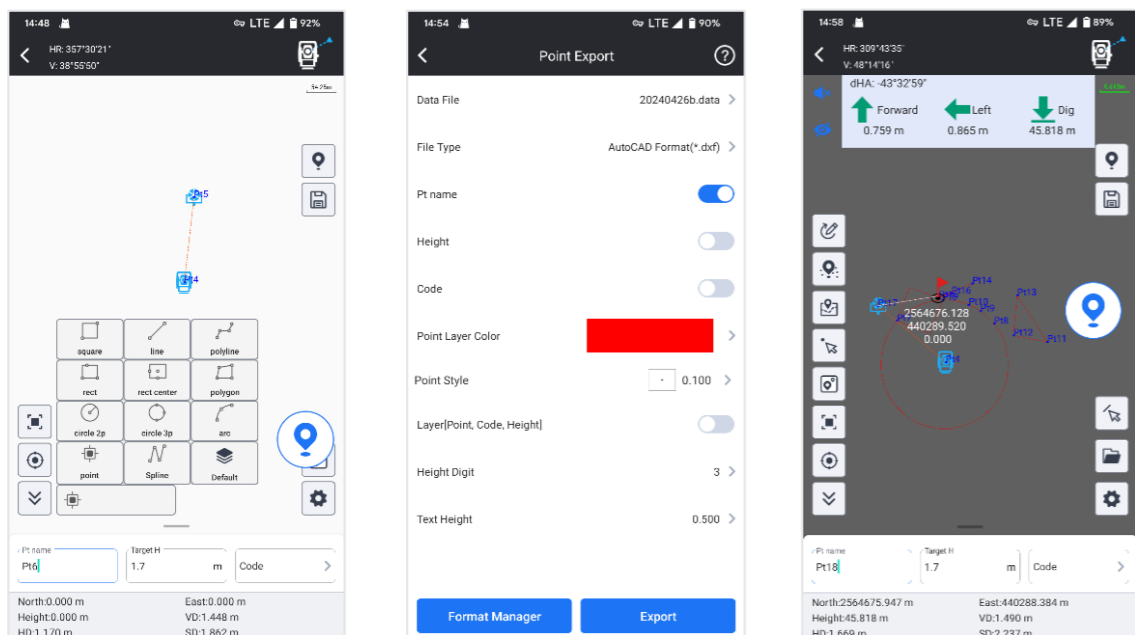
Line Stakeout: Smarter than Traditional Way



User is allowed to manually choose points from library, line will be formed by program automatically. Then user input interval distance, setout points will be calculated out and displayed on screen.

This function is suitable for road or other objective that is containing lines.

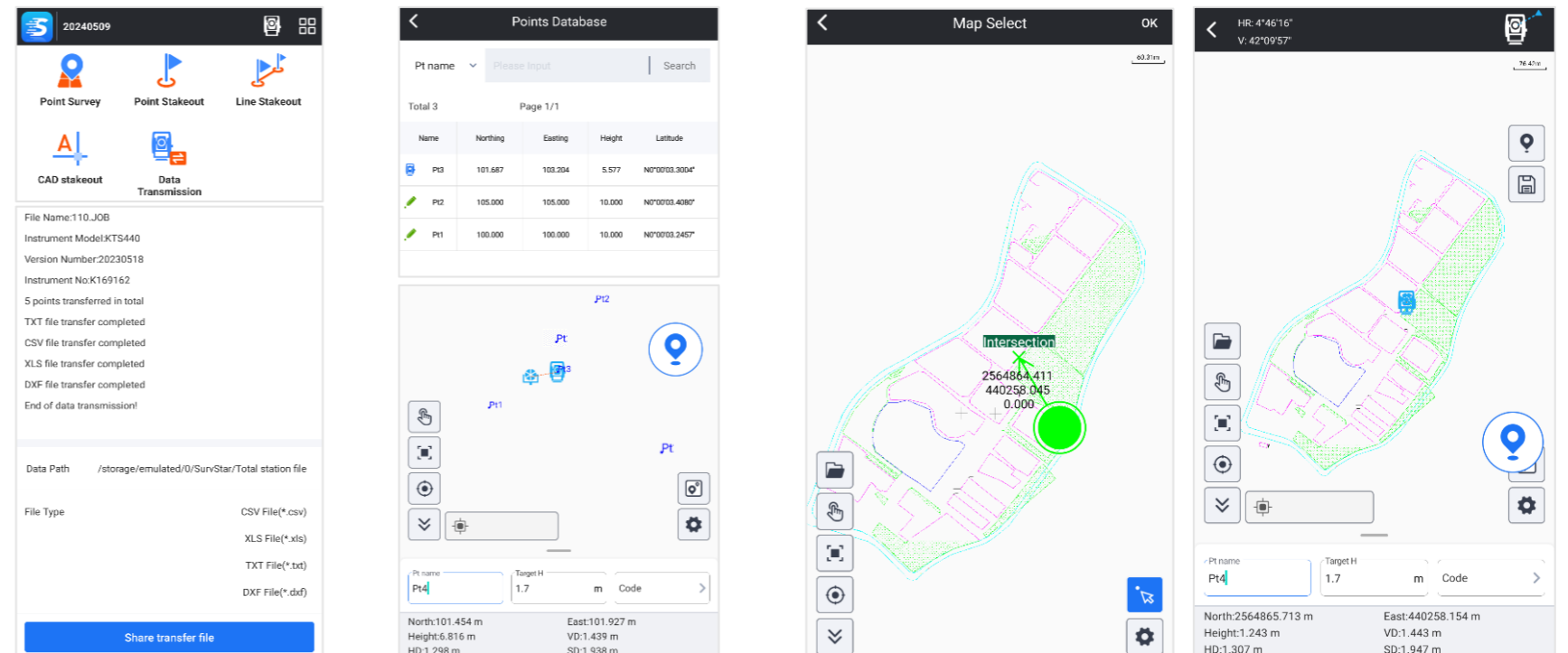
Measure & Draw: Save Time in Both Field work and Indoor Work



User is allowed to draw line, polygon, circle...up to 11 kinds of graphic, while measuring target points. No need to manually draw draft map anymore.

User is allowed to manage different objectives as different layers. The draft map can be saved and output in CAD format, and to be used in indoor works.

Other Features: More Innovation, No Limitation



Download & Share (.csv, .dxf, .txt, .xls)

Resection

Set Occupied Point from CAD basemap or Graphic Map

Other Modules of SurvStar App: GNSS, Marine Survey, 3D Laser Scanner...