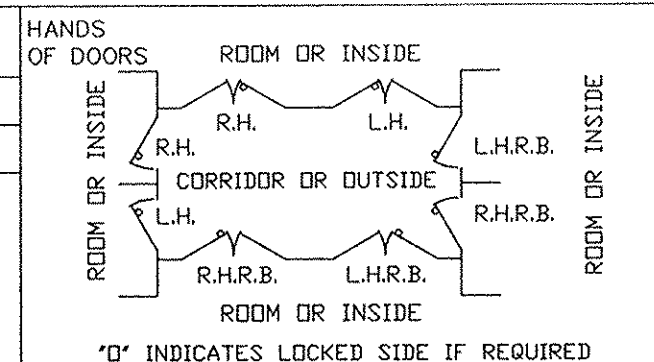


QUAN.	MARK NO	HAND	LOCATION		EXISTING WALL OPNG		FRAME OPNG		DOOR SIZE		DOOR ELEV	SECTIONS				REMARKS
			HINGE SIDE	STOP SIDE	WIDTH	HEIGHT	WIDTH	HEIGHT	WIDTH	HEIGHT		HINGE	STRIKE	HEAD	SILL	
1 PR	1	LHRB ACTIVE	EXTERIOR	INTERIOR	101 1/4'	122 1/2'	96 1/4'	120"	47 7/8'	95 1/8'	A	1 / 7	2	3 / 8	4 / 9	SEE SHT 2 & 3 FOR DETAILS



- NOTES:
- DESIGN PRESSURE: 6 PSI STATIC EQUIVALENT PRESSURE W/ 100% REBOUND
 - FIRE RATING: NONE
 - FINISH: STD GREY PRIMER
 - HARDWARE BY PDI:
 - (2) PR SH-460 6 WAY ADJUST HINGES x USP FINISH
 - (1) SH-153CF 2 PT HORIZONTAL HARDWARE LEVER x LEVER TRIM x US32D FINISH (LESS CYL) @ ACTIVE DOOR FUNCTION: SIM TO 08 CLASSROOM
 - (1) YALE #4400 DOOR CLOSER x PA x ALUM FIN @ ACTIVE DOOR
 - (1) SH-154RB 2 PT VERTICAL HARDWARE LEVER x NO EXT TRIM x US32D FINISH FUNCTION: PASSAGE @ INACTIVE DOOR
 - (1) PDI H-280W WEATHERSTRIP x STAIN STL
 - (2) PDI H-344 SILL SWEEPS x USP FINISH
 - (1) PEMKO #196A THRESHOLD x ALUM FINISH
 - (1) PEMKO #2548A THRESHOLD x ALUM FINISH
 - HARDWARE BY OTHERS:
 - (1) RIM KEY CYLINDER SHIP TO PDI FOR FACTORY INSTALLATION
 - (1) ANY HARDWARE NOT LISTED ABOVE

IMPORTANT NOTE:
 WALL MUST BE CAPABLE OF SUPPORTING THE FOLLOWING LOADS:
 SEATING LOADS
 AT JAMBS 144 LBS/IN
 AT TRANSOM BAR ENDS 15,912 LBS
 AT TOP AND BTM STIFF 1,206 LBS
 UNSEATING LOADS
 AT TRANSOM BAR ENDS 10,881 LBS
 AT REBOUND BARS 6,912 LBS
 FLOOR/SILL EMBED MUST BE CAPABLE OF SUPPORTING:
 15,454 LBS SEATING
 15,454 LBS UNSEATING
 AT THE BTM VERT BOLT

FRAME INSTALLATION

- PROPERLY BRACE AND SUPPORT FRAME DURING INSTALLATION.
- JAMBS MUST BE PLUMB.
- HEAD MUST BE LEVEL.
- ALL DIMENSIONS TO BE WITHIN 1/16".
- DIAGONAL DIMENSIONS TO BE TO BE WITHIN 1/8".

FRAME TO BE FACTORY FIT AND ASSEMBLED THEN SHIPPED KNOCKED DOWN FOR FIELD REASSEMBLY

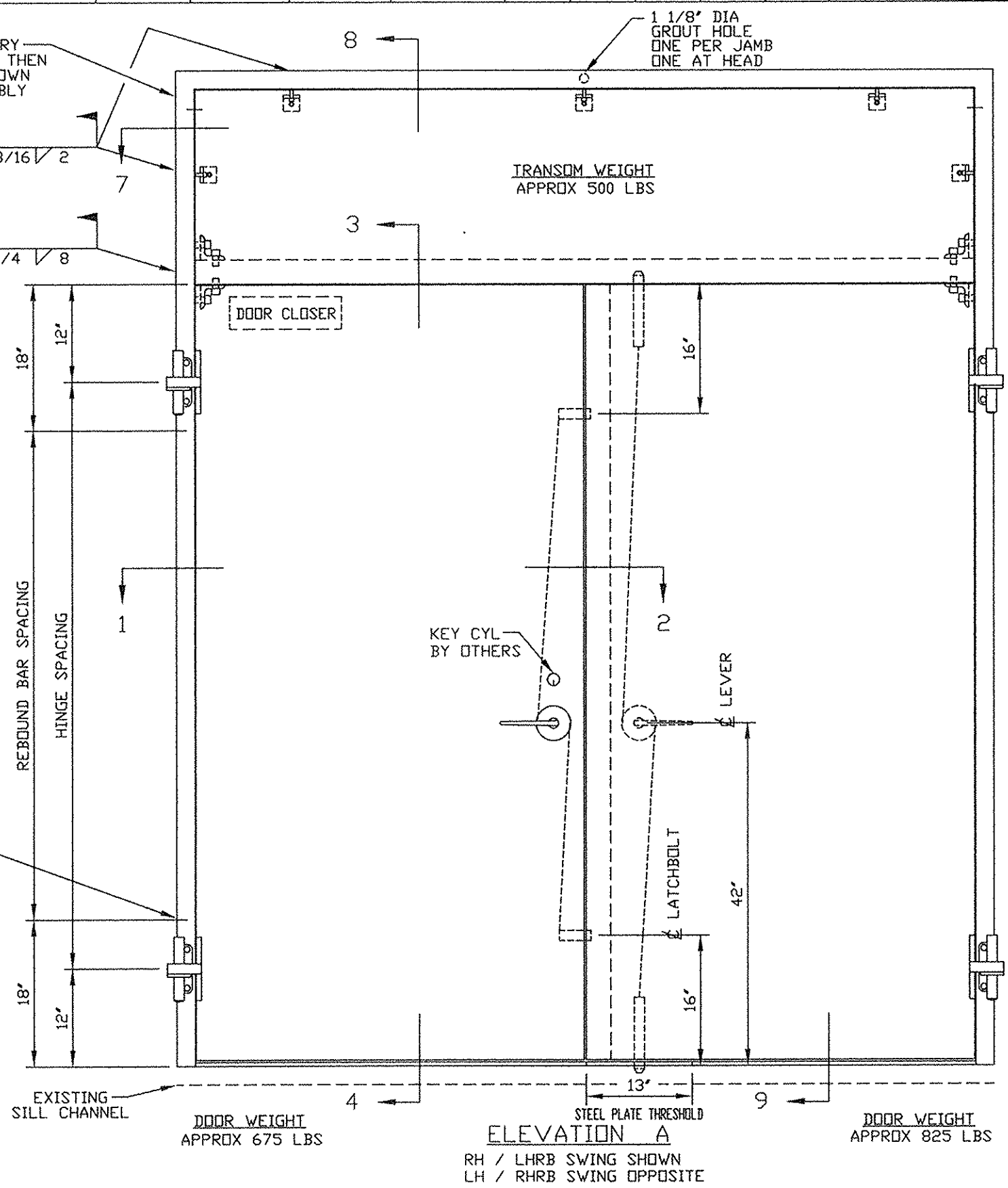
TYP BOTH SIDES
 4 PLACES AT EACH CLIP ANGLE (5) PLCS
 3/16" / 2

TYP BOTH SIDES
 4 PLACES CAULK CONT AFTER WELDING
 1/4" / 8

TYP BOTH SIDES
 4 PLACES AT EACH REBOUND BAR (4) PLACES
 3/16" / 6

NOTICE
 THIS IS A CONFIDENTIAL DISCLOSURE LOANED BY PROTECTIVE DOOR IND. SUBJECT TO THE CONDITIONS THAT IT AND THE INFORMATION EMBODIED THEREIN SHALL BE USED ONLY FOR RECORD AND REFERENCE PURPOSES, SHALL NOT BE USED OR CAUSED TO BE USED IN ANYWAY PREJUDICIAL TO THE INTEREST OF THIS COMPANY, SHALL NOT BE REPRODUCED OR COPIED IN WHOLE OR IN PART, AND SHALL BE RETURNED UPON REQUEST.

GENERAL CONDITIONS
 P.D.I. WILL NOT BE LIABLE FOR ANY ERRORS OCCURRING TO OTHER TRADES THROUGH THE USE OF THIS DRAWING.
 CONTRACTOR TO CHECK ALL DIMENSIONS AT JOB AS P.D.I. ASSUMES NO RESPONSIBILITY FOR GENERAL BUILDING DIMENSIONS.



DATE	MK	DESCRIPTION	BY

REVISIONS

CUSTOMER:

PROJECT:



PROTECTIVE DOOR INDUSTRIES
 HARVEY, ILLINOIS 60426

TITLE DB-10 PAIR W/ TRANSOM
 BLAST RESISTANT DOOR AND FRAME

DWG BY	MF	CHKD BY	
DATE	7/20/17	DATE	
SCALE		QA	
DWG NO.	2297-17	SHT NO.	1

PLOT SCALE 1=4
2297-1

MASTER