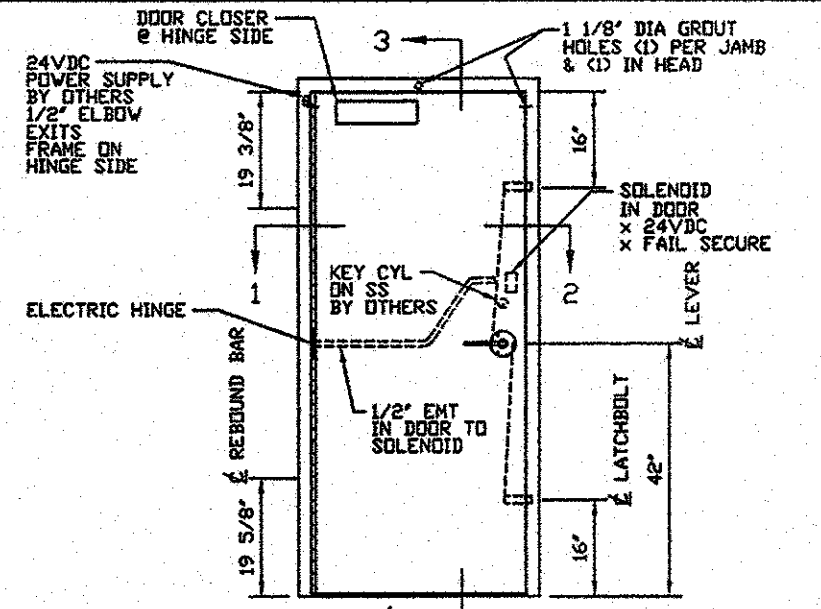
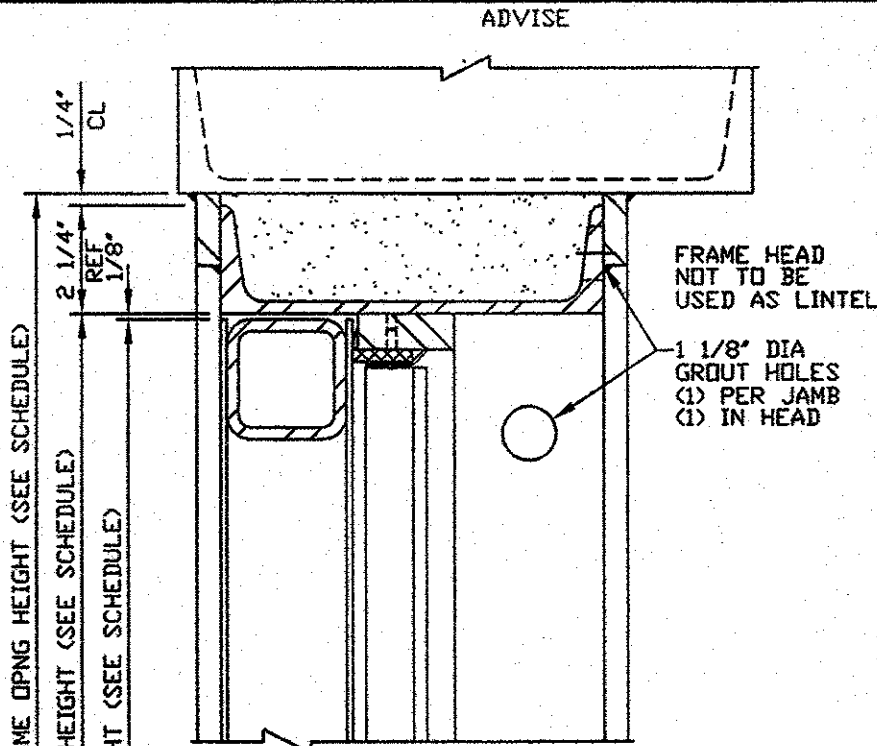
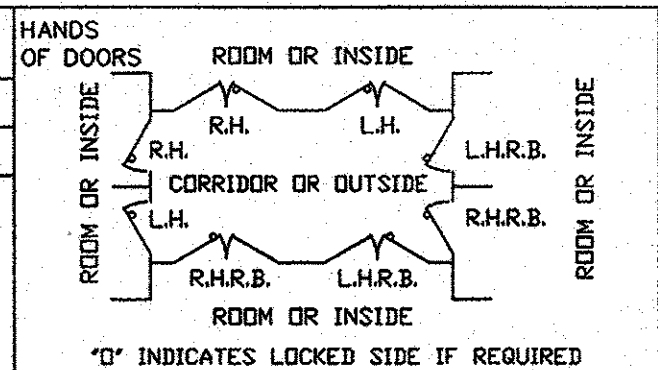
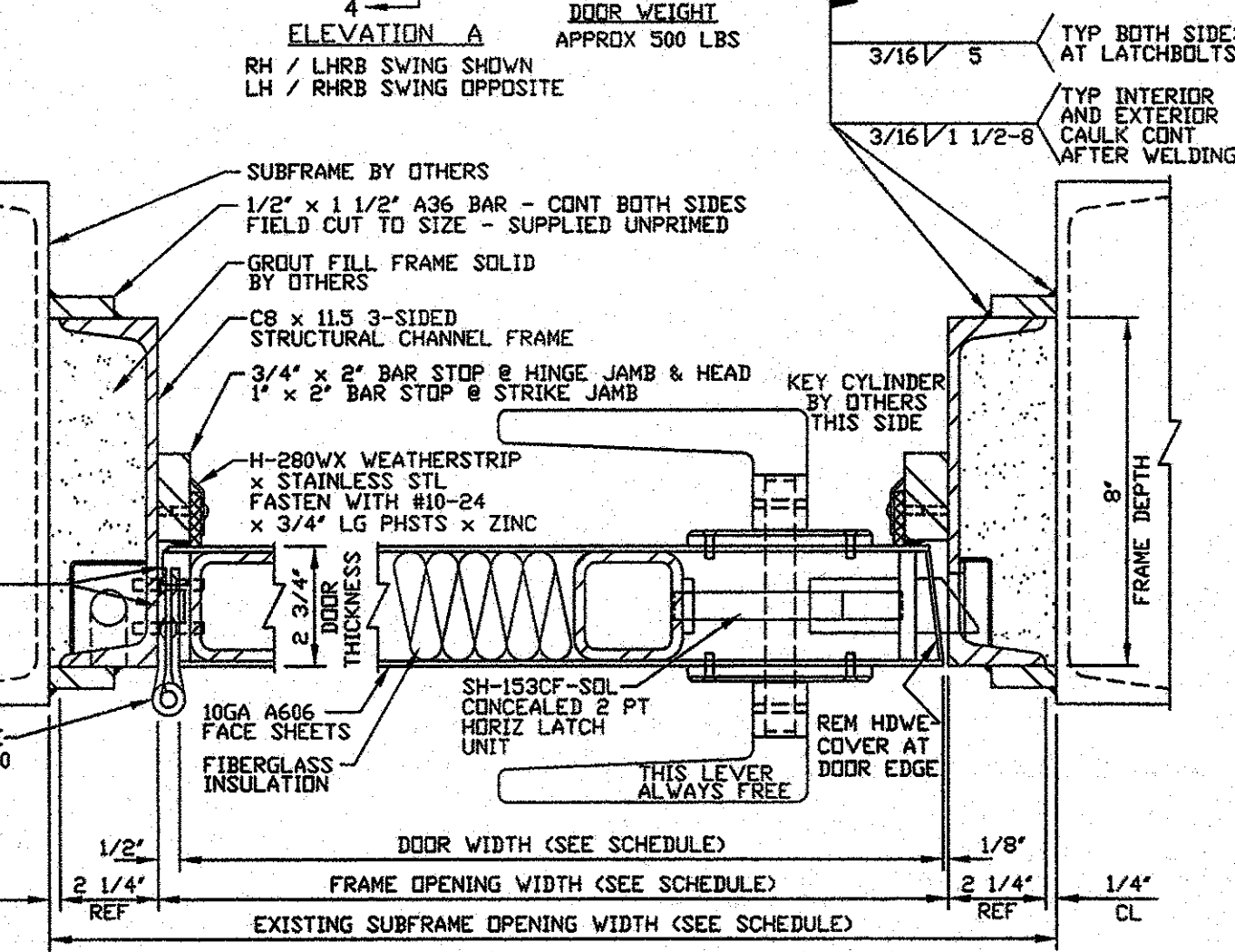
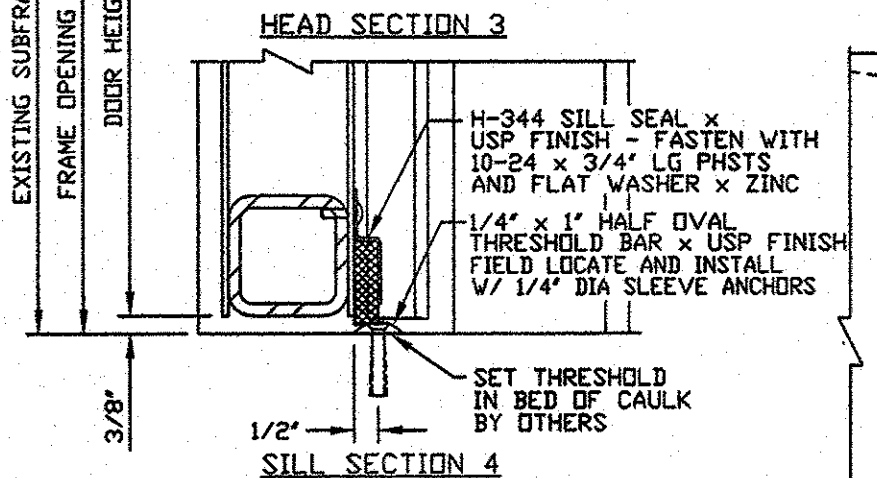


QUAN.	MARK NO	HAND	LOCATION		EXISTING WALL OPNG		FRAME OPNG		DOOR SIZE		DOOR ELEV	SECTIONS				REMARKS
			HINGE SIDE	STOP SIDE	WIDTH	HEIGHT	WIDTH	HEIGHT	WIDTH	HEIGHT		HINGE	STRIKE	HEAD	SILL	
1 SGL	106d	LH	A10 TEST CELL		41'	82 1/2'	36'	80'	35 3/8'	79 1/2'	A	1	2	3	4	
2 SGLS	106b 106c	RH	A10 TEST CELL		41'	86 1/2'	36'	84'	35 3/8'	83 1/2'	A	1	2	3	4	



IMPORTANT NOTE:
WALL MUST BE CAPABLE OF SUPPORTING THE FOLLOWING LOADS:
SEATING LOADS
AT JAMBS 144 LBS/IN
AT LATCHBOLT PLATES 5,058 LBS
AT TOP AND BTM STIFF 936 LBS
UNSEATING LOADS
AT LATCHBOLTS 6,048 LBS
AT CONT HINGE 144 LBS/IN

- FRAME INSTALLATION**
1. PROPERLY BRACE AND SUPPORT FRAME DURING INSTALLATION.
 2. JAMBS MUST BE PLUMB.
 3. HEAD MUST BE LEVEL.
 4. ALL DIMENSIONS TO BE WITHIN 1/16".
 5. DIAGONAL DIMENSIONS TO BE TO BE WITHIN 1/8".



NOTICE
THIS IS A CONFIDENTIAL DISCLOSURE LOANED BY PROTECTIVE DOOR IND. SUBJECT TO THE CONDITIONS THAT IT AND THE INFORMATION EMBODIED THEREIN SHALL BE USED ONLY FOR RECORD AND REFERENCE PURPOSES, SHALL NOT BE USED OR CAUSED TO BE USED IN ANYWAY PREJUDICIAL TO THE INTEREST OF THIS COMPANY, SHALL NOT BE REPRODUCED OR COPIED IN WHOLE OR IN PART, AND SHALL BE RETURNED UPON REQUEST.

GENERAL CONDITIONS
P.D.I. WILL NOT BE LIABLE FOR ANY ERRORS OCCURRING TO OTHER TRADES THROUGH THE USE OF THIS DRAWING.
CONTRACTOR TO CHECK ALL DIMENSIONS AT JOB AS P.D.I. ASSUMES NO RESPONSIBILITY FOR GENERAL BUILDING DIMENSIONS.

- NOTES:**
1. DESIGN PRESSURE: 8.0 PSI STATIC EQUIVALENT PRESSURE W/ 100% REBOUND
 2. FIRE RATING: UL 1 1/2 HR - B LABEL
 3. ACOUSTICAL RATING: 40 STC
 4. FINISH: STD GREY PRIMER
 5. HARDWARE BY PDI:
 - (1) CONTINUOUS HINGE x DOOR HEIGHT 8GA LEAVES x 3/8" DIA SS PIN x 6" OPEN WIDTH x SS FINISH
 - (1) ELECTRIC HINGE - HAGER #BB1199 5" x 5" x US32D FINISH x ETW
 - (1) SH-153CF-SOL 2 PT HORIZONTAL HARDWARE LEVER x LEVER TRIM x US32D FINISH x 24VDC x (LESS CYL)
 6. HARDWARE BY OTHERS:
 - (1) YALE #4400 DOOR CLOSER x REG ARM x ALUM FIN
 - (1) PDI H-280WX WEATHERSTRIP x SS FINISH
 - (1) PDI H-344 SILL SWEEP x USP FINISH
 - (1) PDI HALF OVAL THRESHOLD BAR x USP FIN
- FUNCTION: SIM TO STOREROOM
POWER SUPPLY TO SOLENOID UNLOCKS EXTERIOR SS LEVER
SOLENOID FAIL SECURE - HS LEVER ALWAYS FREE

DATE	MK	DESCRIPTION	BY

REVISIONS

CUSTOMER:
PROJECT:

PROTECTIVE DOOR INDUSTRIES
HARVEY, ILLINOIS 60426

TITLE: DB-10 SGL BLAST RESISTANT DOOR AND FRAME

DWG BY	MF	CHKD BY	
DATE	12/10/15	DATE	
SCALE		QA	
DWG NO.	2190-15	SHT NO.	1

PLOT SCALE 1=4
2190-1

MASTER