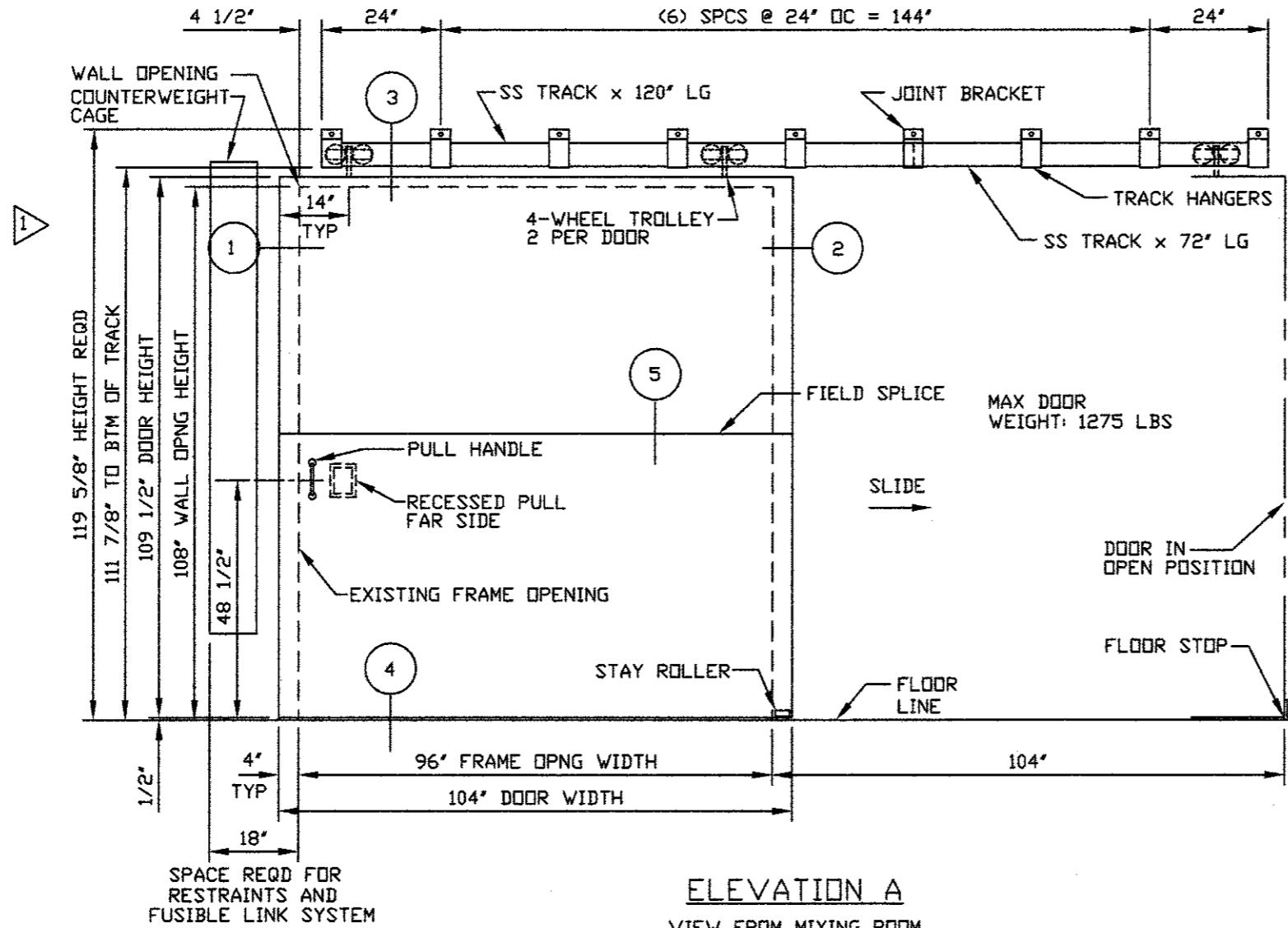
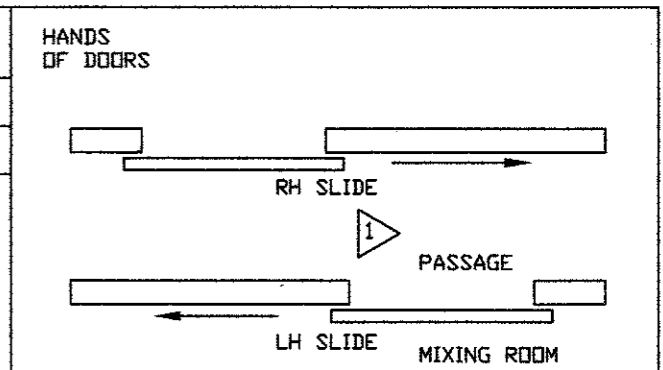


QUAN.	MARK NO	HAND	LOCATION		EXISTING WALL OPNG		FRAME OPNG		DOOR SIZE		DOOR ELEV	SECTIONS				REMARKS
			WALL SIDE	HDWE SIDE	WIDTH	HEIGHT	WIDTH	HEIGHT	WIDTH	HEIGHT		LEAD	TRAIL	HEAD	SILL	
1	9	LH	PASSAGE	MIXING ROOM	96"	108"	NA	NA	104"	109 1/2"	A	1	2	3	4	



- NOTES:**
- DESIGN PRESSURE: 100 PSF STATIC EQUIVALENT PRESSURE W/ 100% REBOUND
 - FINISH: KEM KROMIK GREY PRIMER
 - FIRE RATING: NONE
 - NON-COMBUSTIBLE CONSTRUCTION DOOR CONSTRUCTION SIMILAR TO SWING DOORS WHICH PASSED UL 3 HR "A" LABEL FIRE TEST
 - TYPE 304 STAINLESS STEEL MATERIAL WILL BE USED FOR NON-SPARKING SPECIFICATION REQUIREMENT
 - HARDWARE PER OPENING:
 - (1) PAIR 4-WHEEL TROLLEYS WITH 7/8" DIA PENDANT AND WHEELS x STAINLESS STEEL
 - (2) BOX TRACK x STAIN STL
 - (8) TRACK HANGER BRKTS x USP FINISH
 - (1) JOINT HANGER BRKT X USP FINISH
 - (1) #131 PULL HANDLE x STAIN STL
 - (1) #470-P1 RECESSED PULL x FINISH PAINTED
 - (1) STAY ROLLER x FINISH PAINTED
 - (1) FLOOR STOP x STAIN STL
 - (1) SET PRESSURE RESTRAINTS x STAIN STL x MILL FINISH
 - (1) SET PEMKO 18100CNB WEATHERSTRIP x ALUM

SEE DWG 1970-3 FOR SELF-CLOSING DEVICE DETAILS

2/1/12	1	PER APPROVED DWGS	MF
DATE	MK	DESCRIPTION	BY

REVISIONS

CUSTOMER:	
PROJECT:	

PROTECTIVE DOOR INDUSTRIES
HARVEY, ILLINOIS 60426

TITLE DB-100 SLIDING DOOR ELEVATION

DWG BY	MF	CHKD BY	
DATE	12/16/11	DATE	
SCALE		QA	
DWG NO.	1970-11	SHT NO.	1

NOTICE
THIS IS A CONFIDENTIAL DISCLOSURE LOANED BY PROTECTIVE DOOR IND. SUBJECT TO THE CONDITIONS THAT IT AND THE INFORMATION EMBODIED THEREIN SHALL BE USED ONLY FOR RECORD AND REFERENCE PURPOSES, SHALL NOT BE USED OR CAUSED TO BE USED IN ANYWAY PREJUDICIAL TO THE INTEREST OF THIS COMPANY, SHALL NOT BE REPRODUCED OR COPIED IN WHOLE OR IN PART, AND SHALL BE RETURNED UPON REQUEST.

GENERAL CONDITIONS
P.D.I. WILL NOT BE LIABLE FOR ANY ERRORS OCCURRING TO OTHER TRADES THROUGH THE USE OF THIS DRAWING. CONTRACTOR TO CHECK ALL DIMENSIONS AT JOB AS P.D.I. ASSUMES NO RESPONSIBILITY FOR GENERAL BUILDING DIMENSIONS.

RH SLIDE SHOWN
(1) REQD LH SLIDE OPPOSITE

IMPORTANT NOTE:
WALL AND FRAME MUST BE CAPABLE OF SUPPORTING 37 LB/IN IN THE SEATING AND UNSEATING DIRECTION

PLOT SCALE 1=4
1970-1

MASTER