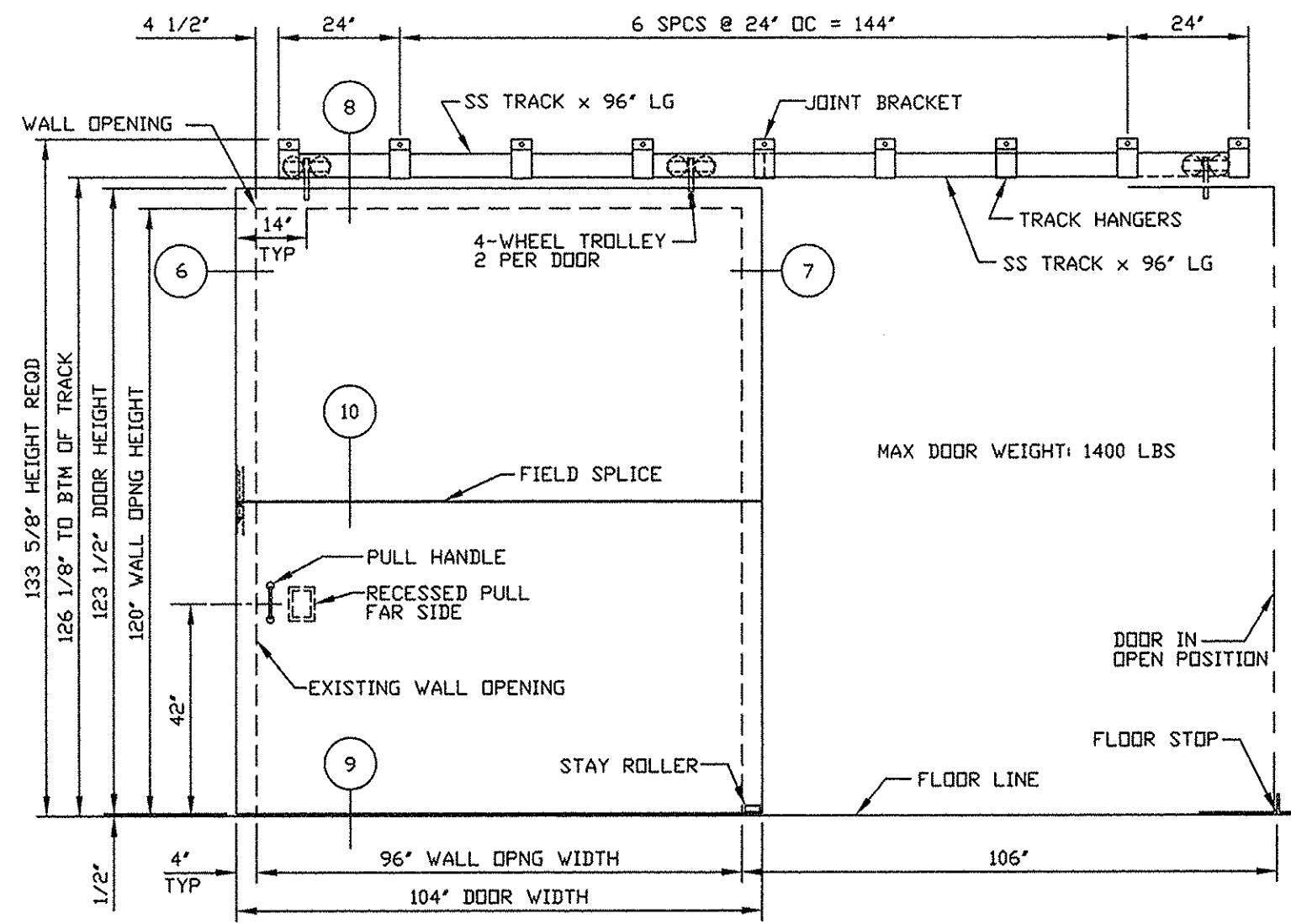
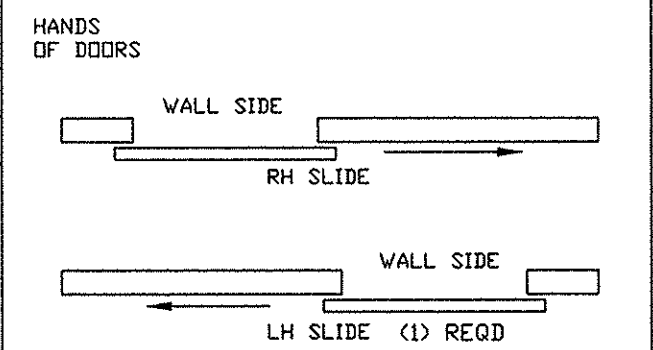


QUAN.	MARK NO	HAND	LOCATION		EXISTING WALL OPNG		FRAME OPNG		DOOR SIZE		DOOR ELEV	SECTIONS				REMARKS
			HDWE SIDE	WALL SIDE	WIDTH	HEIGHT	WIDTH	HEIGHT	WIDTH	HEIGHT		LEAD	TRAIL	HEAD	SILL	
1	402	LH	INK WAREHOUSE		96'	120'	NA	NA	104'	123 1/2'	B	6	7	8	9	SPLICE SECT 10
				ADVISE												




- NOTES:
- DESIGN PRESSURE: 130 PSF STATIC EQUIVALENT PRESSURE W/ 100% REBOUND
 - FINISH: STD GREY PRIMER
 - FIRE RATING: NONE
 - TYPE 304 STAINLESS STEEL MATERIAL WILL BE USED FOR NON-SPARKING SPECIFICATION REQUIREMENT
 - HARDWARE PER OPENING:
 - (1) PAIR SERIES 2000 4-WHEEL TROLLEYS WITH 7/8" DIA PENDANT AND WHEELS x STAINLESS STEEL
 - (2) SERIES 2000 BOX TRACK x STAIN STL
 - (8) SERIES 2000 #SWS TRACK HANGER BRKTS x USP FINISH
 - (1) SERIES 2000 #SWS-LJ JOINT HANGER BRKT x USP FINISH
 - (1) ROCKWOOD #131 PULL HANDLE x STAIN STL
 - (1) #470-P1 RECESSED PULL x FINISH PAINTED
 - (1) STAY ROLLER x USP FINISH
 - (1) FLOOR STOP x USP FINISH
 - (1) SET PRESSURE RESTRAINTS x STAIN STL x MILL FINISH
 - (1) SET PEMKO #18175CP WEATHERSTRIP - 3 PCS
- SEE DWG 2125-4 FOR PNEUMATIC OPERATOR DETAILS

DATE	MK	DESCRIPTION	BY
REVISIONS			

CUSTOMER:

PROJECT:


 PROTECTIVE DOOR INDUSTRIES
 HARVEY, ILLINOIS 60426

TITLE DB-100 SLIDING DOOR ELEVATION

DWG BY	MF	CHKD BY	
DATE	6/13/14	DATE	
SCALE		QA	
DWG NO.	2125-14	SHT NO.	2

ELEVATION B

RH SLIDE SHOWN
 (1) REQD LH SLIDE OPPOSITE
 RESTRAINTS NOT SHOWN FOR CLARITY

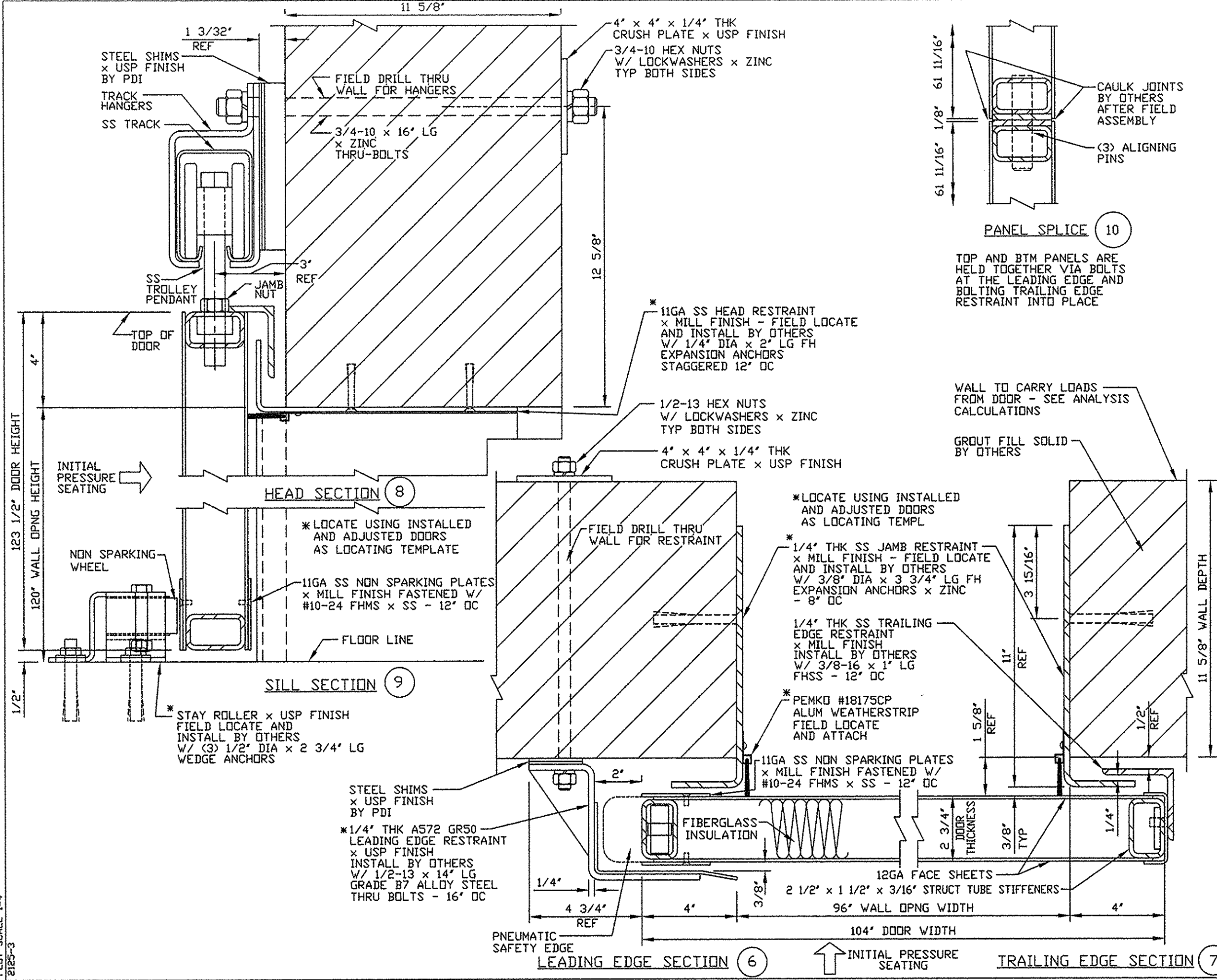
IMPORTANT NOTE:
 WALL AND FRAME MUST BE CAPABLE OF SUPPORTING 48 LB/IN IN THE SEATING AND UNSEATING DIRECTION

NOTICE
 THIS IS A CONFIDENTIAL DISCLOSURE LOANED BY PROTECTIVE DOOR IND. SUBJECT TO THE CONDITIONS THAT IT AND THE INFORMATION EMBODIED THEREIN SHALL BE USED ONLY FOR RECORD AND REFERENCE PURPOSES, SHALL NOT BE USED OR CAUSED TO BE USED IN ANYWAY PREJUDICIAL TO THE INTEREST OF THIS COMPANY, SHALL NOT BE REPRODUCED OR COPIED IN WHOLE OR IN PART, AND SHALL BE RETURNED UPON REQUEST.

GENERAL CONDITIONS
 P.D.I. WILL NOT BE LIABLE FOR ANY ERRORS OCCURRING TO OTHER TRADES THROUGH THE USE OF THIS DRAWING.
 CONTRACTOR TO CHECK ALL DIMENSIONS AT JOB AS P.D.I. ASSUMES NO RESPONSIBILITY FOR GENERAL BUILDING DIMENSIONS.

PLOT SCALE 1/4"=1'-0"
2125-C

MASTER



NOTES:
1. SEE DRAWING 2125-2

NOTICE
THIS IS A CONFIDENTIAL DISCLOSURE LOANED BY PROTECTIVE DOOR IND. SUBJECT TO THE CONDITIONS THAT IT AND THE INFORMATION EMBODIED THEREIN SHALL BE USED ONLY FOR RECORD AND REFERENCE PURPOSES, SHALL NOT BE USED OR CAUSED TO BE USED IN ANYWAY PREJUDICIAL TO THE INTEREST OF THIS COMPANY, SHALL NOT BE REPRODUCED OR COPIED IN WHOLE OR IN PART, AND SHALL BE RETURNED UPON REQUEST.

GENERAL CONDITIONS
P.D.I. WILL NOT BE LIABLE FOR ANY ERRORS OCCURRING TO OTHER TRADES THROUGH THE USE OF THIS DRAWING. CONTRACTOR TO CHECK ALL DIMENSIONS AT JOB AS P.D.I. ASSUMES NO RESPONSIBILITY FOR GENERAL BUILDING DIMENSIONS.

DATE	MK	DESCRIPTION	BY

REVISIONS

CUSTOMER:

PROJECT:

PROTECTIVE DOOR INDUSTRIES
HARVEY, ILLINOIS 60426

TITLE DB-100 SLIDING DOOR DETAILS

DWG BY	MF	CHKD BY	
DATE	6/13/14	DATE	
SCALE	QA	DWG NO.	2125-14
		SHT NO.	3

MASTER

PLOT SCALE 1=4
2125-3