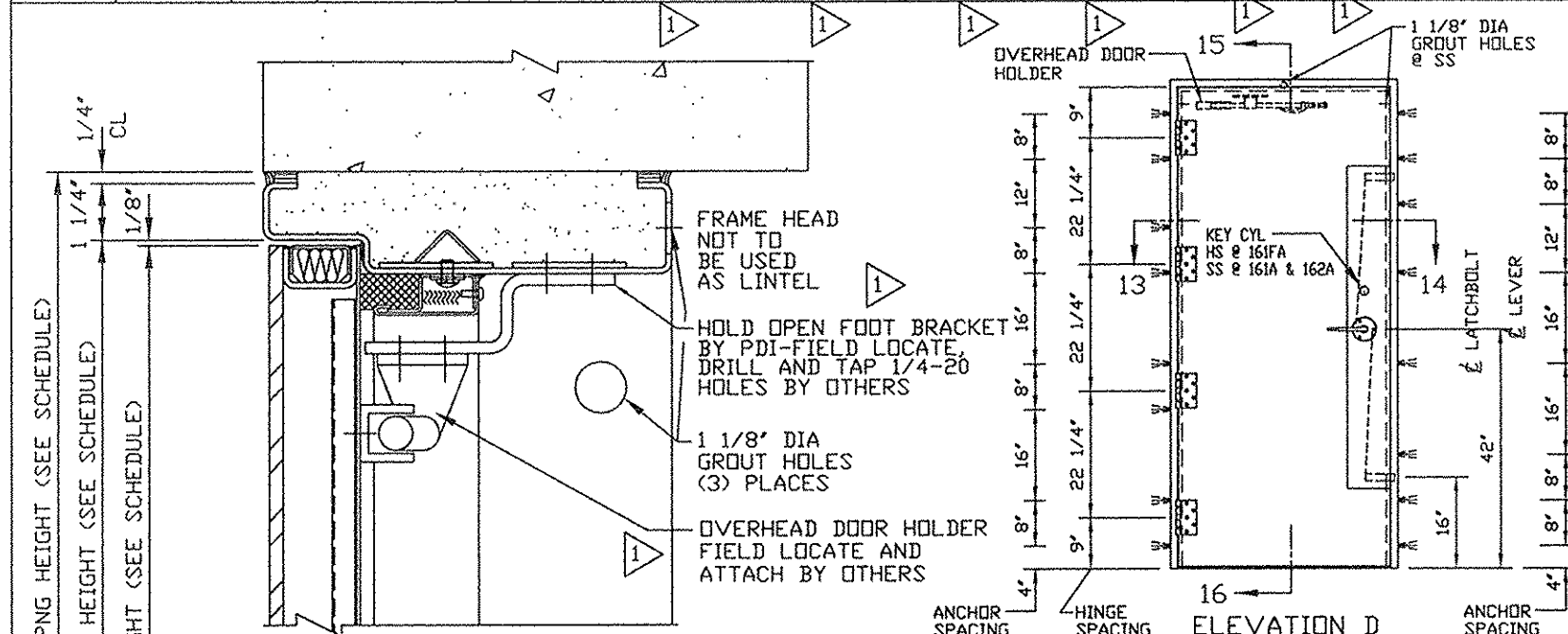
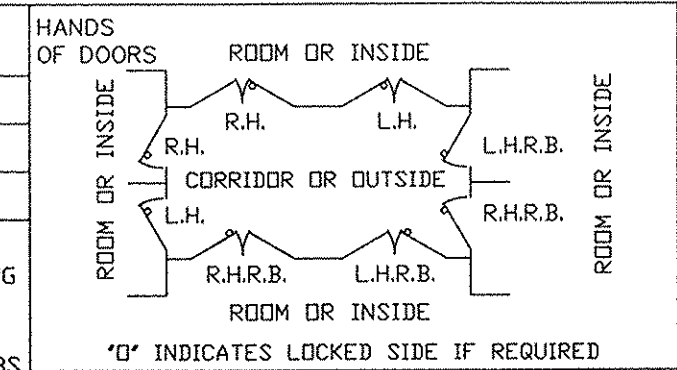


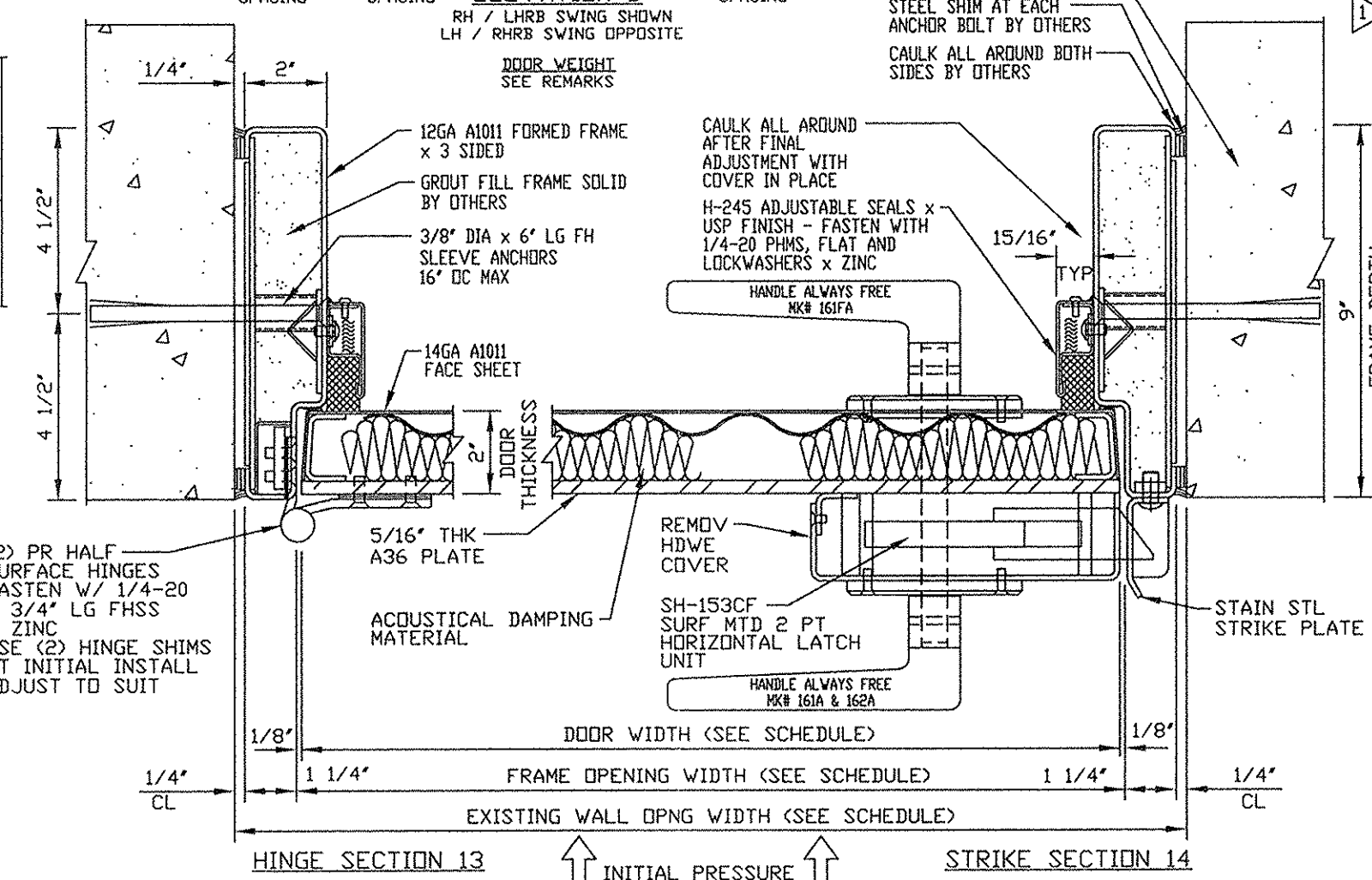
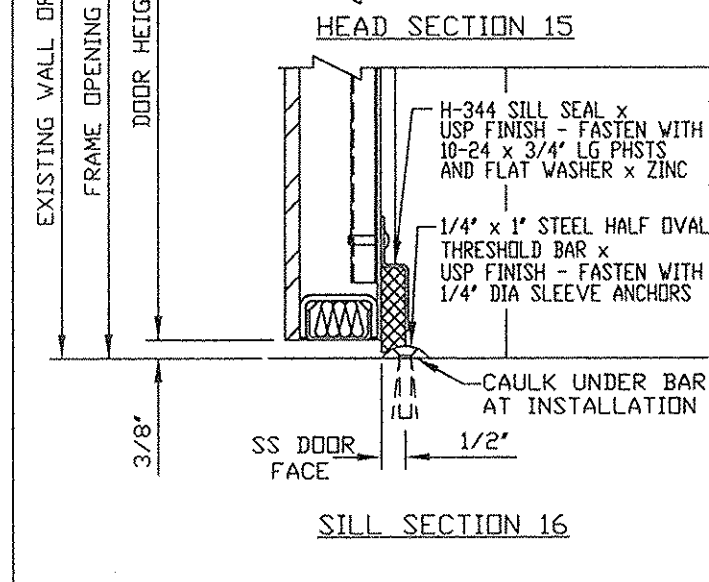
QUAN.	MARK NO	HAND	LOCATION		EXISTING WALL OPNG		FRAME OPNG		DOOR SIZE		DOOR ELEV	SECTIONS				REMARKS
			HINGE SIDE	STOP SIDE	WIDTH	HEIGHT	WIDTH	HEIGHT	WIDTH	HEIGHT		HINGE	STRIKE	HEAD	SILL	
1 SGL	161A	RH	LASER LAB 161	CORRIDOR C105	48"	83 1/4"	45"	81 3/4"	44 3/4"	81 1/4"	D	13	14	15	16	APPROX 550 LBS
1 SGL	161FA	LHRB	FUTURE USE 161C	COMPRESSOR 161F	42 1/2"	86 1/4"	39 1/2"	84 3/4"	39 1/4"	84 1/4"	D	13	14	15	16	APPROX 475 LBS
1 SGL	162A	LH	PLASMA LAB 162	CORRIDOR C102	39"	84 3/4"	36"	83 1/4"	35 3/4"	82 3/4"	D	13	14	15	16	APPROX 450 LBS



IMPORTANT NOTE:
WALL MUST BE CAPABLE OF SUPPORTING THE FOLLOWING LOADS:
SEATING LOADS
AT JAMBS 48 LBS/IN
AT TOP AND BTM STIFF 1,035 LBS
UNSEATING LOADS
AT LATCHBOLT 1,928 LBS
AT HINGES 1,012 LBS

FRAME INSTALLATION
1. PROPERLY BRACE AND SUPPORT FRAME DURING INSTALLATION
2. JAMBS MUST BE PLUMB
3. HEAD MUST BE LEVEL
4. ALL DIMENSIONS TO BE WITHIN 1/16"
5. DIAGONAL DIMENSIONS TO BE TO BE WITHIN 1/8"

- NOTES:**
- DESIGN PRESSURE: 2.0 PSI STATIC EQUIVALENT SEATING PRESSURE WITH 100% REBOUND FROM THE HINGE SIDE LOAD
 - 45 STC ACOUSTICAL RATING
 - FIRE RATING: NONE
 - FINISH: STD GREY PRIMER
 - HARDWARE BY PDI: (PER OPENING) SET 1.1 (2 PR) BB1163 6" x 5 3/8" x .203" HALF SURFACE HINGES x USP FINISH x MODIFIED LEVER x LEVER TRIM x US32D FINISH x SPECIAL MORTISED KEY CYLINDER FUNCTION: SIM TO 08 CLASSROOM
 - (1) GLYNN JOHNSON HOLD OPEN DEVICE #794H - US26D FINISH - MK# 162A
 - (1) GLYNN JOHNSON HOLD OPEN DEVICE #795H - US26D FINISH - MK# 161A & 161FA
 - (1) SET PDI H-245 ADJUST SEALS x USP FIN
 - (1) PDI H-344 SILL SWEEP x USP FINISH
 - (1) PDI HALF OVAL THRESHOLD BAR x USP FIN
 - HARDWARE BY OTHERS:
 - (1) REMOVABLE KEY CYLINDER CORE
 - (1) ANY HARDWARE NOT LISTED ABOVE



NOTICE
THIS IS A CONFIDENTIAL DISCLOSURE LOANED BY PROTECTIVE DOOR IND. SUBJECT TO THE CONDITIONS THAT IT AND THE INFORMATION EMBODIED THEREIN SHALL BE USED ONLY FOR RECORD AND REFERENCE PURPOSES, SHALL NOT BE USED OR CAUSED TO BE USED IN ANYWAY PREJUDICIAL TO THE INTEREST OF THIS COMPANY, SHALL NOT BE REPRODUCED OR COPIED IN WHOLE OR IN PART, AND SHALL BE RETURNED UPON REQUEST.

GENERAL CONDITIONS
P.D.I. WILL NOT BE LIABLE FOR ANY ERRORS OCCURRING TO OTHER TRADES THROUGH THE USE OF THIS DRAWING.
CONTRACTOR TO CHECK ALL DIMENSIONS AT JOB AS P.D.I. ASSUMES NO RESPONSIBILITY FOR GENERAL BUILDING DIMENSIONS.

DATE	MK	DESCRIPTION	BY
8/7/17	1	PER RETURNED APPROVAL DWG	MF

REVISIONS
CUSTOMER:
PROJECT:

PROTECTIVE DOOR INDUSTRIES
HARVEY, ILLINOIS 60426

TITLE	
DB-48L SGL BLAST RESISTANT DOOR AND FRAME	
DWG BY MF	CHKD BY
DATE 2/3/17	DATE
SCALE	QA
DWG NO. 2264-17	SHT NO. 4

PLOT SCALE 1=4
2264-4

MASTER