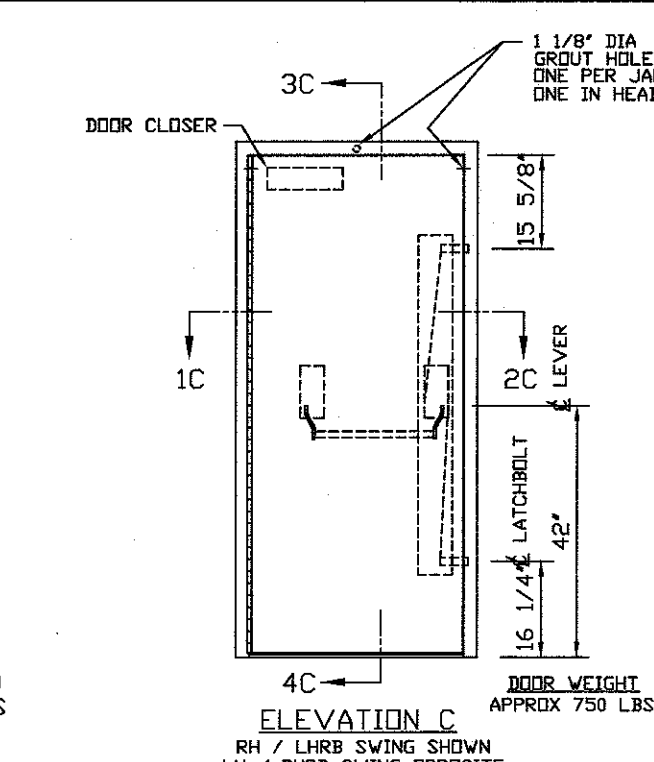
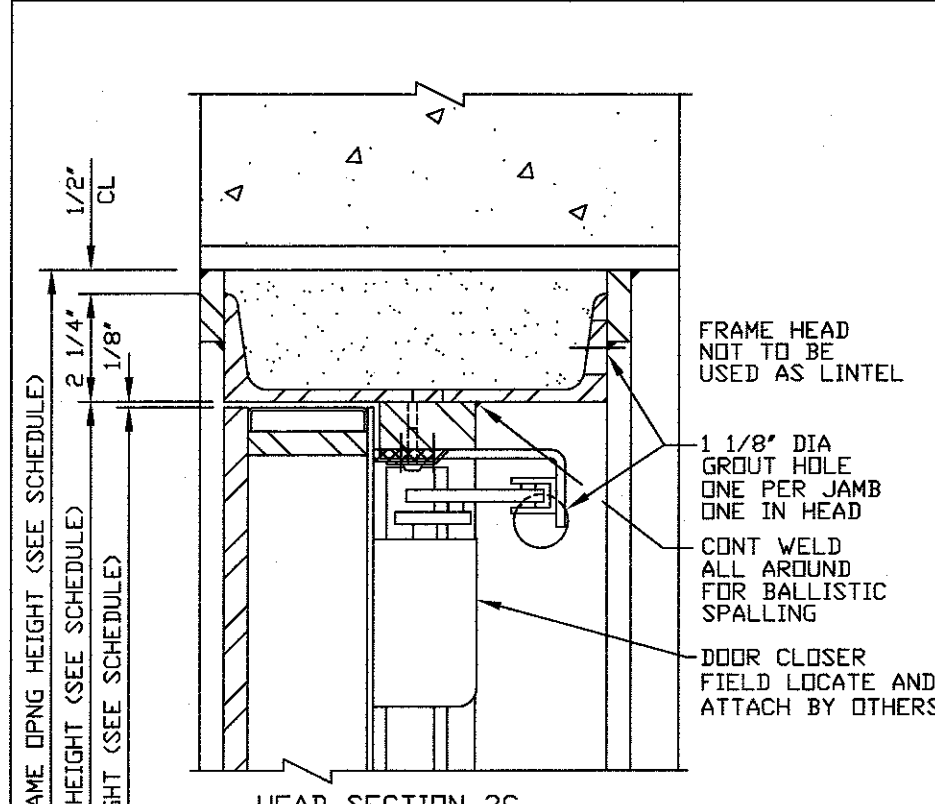
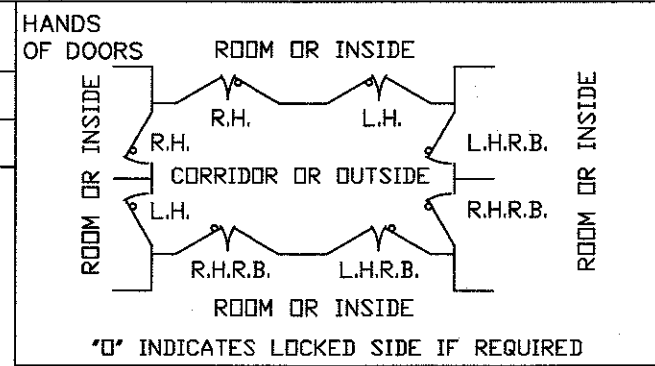
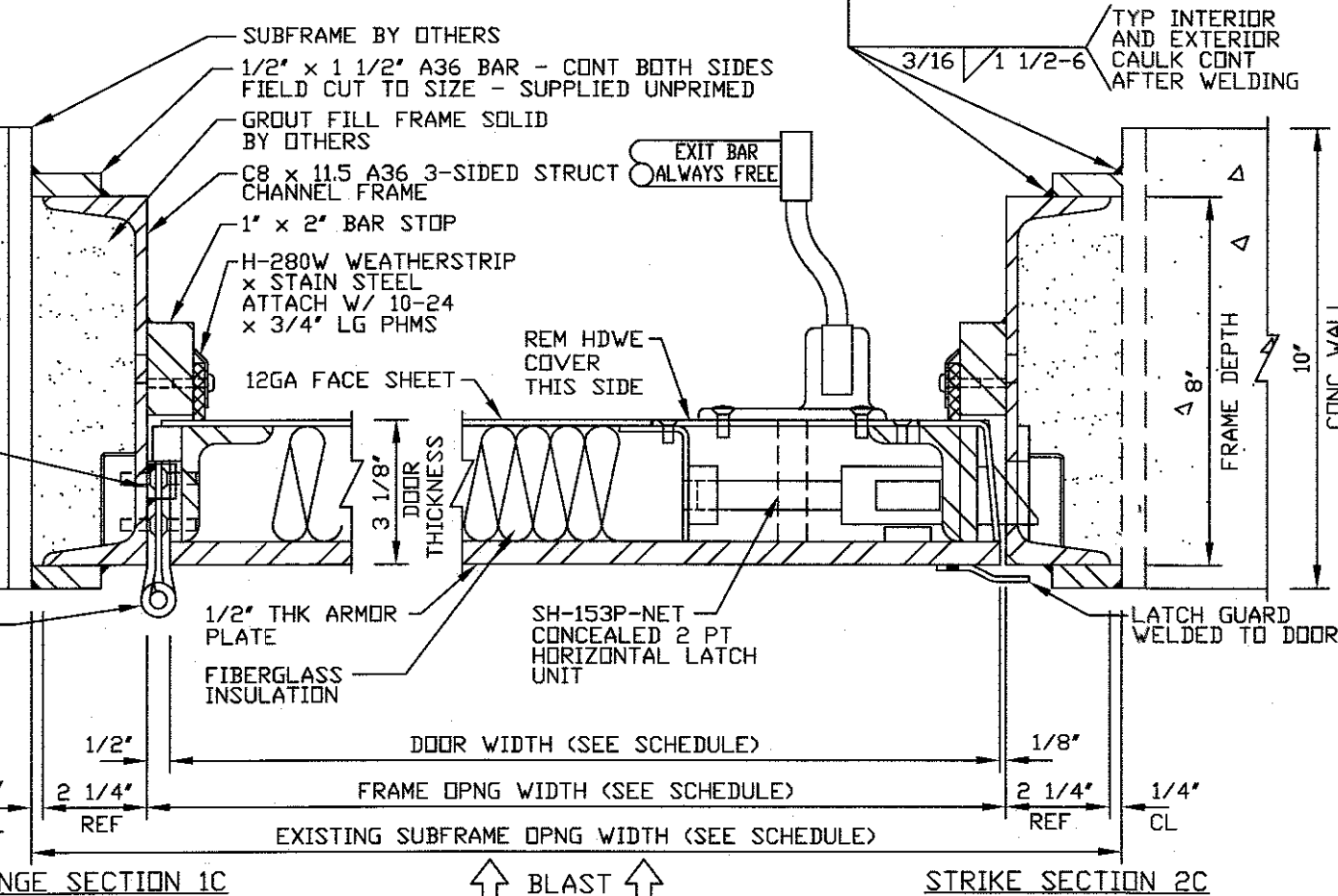
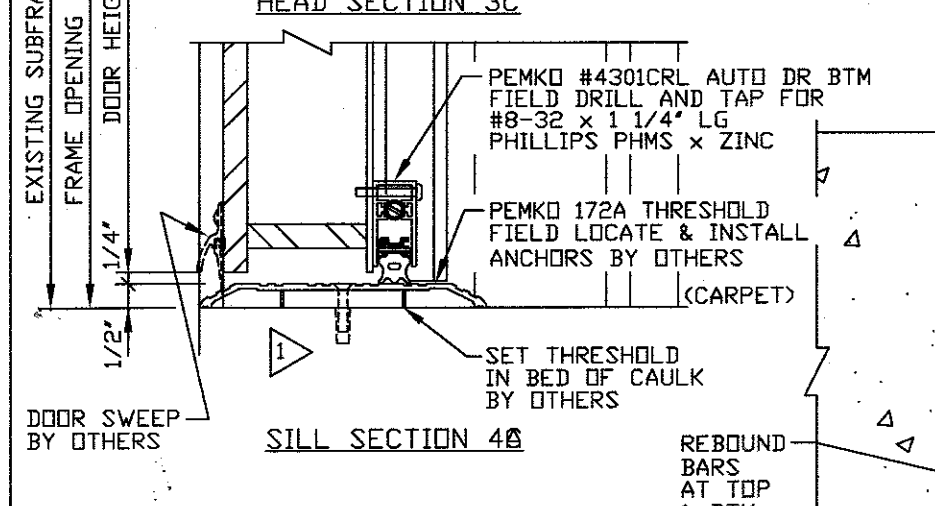


QUAN.	MARK NO	HAND	LOCATION		EXISTING WALL OPNG		FRAME OPNG		DOOR SIZE		DOOR ELEV	SECTIONS				REMARKS		
			HINGE SIDE	STOP SIDE	WIDTH	HEIGHT	WIDTH	HEIGHT	WIDTH	HEIGHT		HINGE	STRIKE	HEAD	SILL			
1	SGL		103-1	RHRB	EXTERIOR	CORR 103	43'	86 3/4'	38'	84'	37 3/8'	83 1/8'	C	1C	2C	3C	4C	



- HARDWARE BY PDI:**
- (1) CONTINUOUS HINGE x DOOR HEIGHT 8GA LEAVES x 3/8" DIA SS PIN x 6" OPEN WIDTH x SS FINISH
 - (1) SH-153P-NET 2 PT HORIZONTAL HARDWARE EXIT BAR TRIM ONLY x US32D FINISH FUNCTION: EXIT ONLY - PASSAGE
 - (1) YALE #4400 CLOSER x PA x ALUM FINISH x HD RIGID ARM
 - (1) PDI STEEL LATCH GUARD x USP FINISH
 - (1) PDI H-280W WEATHERSTRIP x STAIN STEEL
 - (1) PEMKO #4301CRL AUTO DOOR BTM
 - (1) PEMKO #172A THRESHOLD x ALUM
- HARDWARE BY OTHERS:**
- (1) SURFACE MOUNTED MAGNETIC SWITCH
 - (1) DOOR SWEEP WITH RAIN DRIP
- ANY HARDWARE NOT LISTED ABOVE



- NOTES:**
- DESIGN PRESSURE: $P_r = 19.77$ PSI SEATING PRESSURE FOR 16.65 MSEC W/ REBOUND AS CALCULATED
 - TORNADIC DESIGN PRESSURE: 2.19 PSI STATIC UNSEATING (SUCTION) PRESSURE
 - MISSILE DESIGN: STD 2x4 WEIGHING 15 LBS IMPACT VELOCITY = 100 MPH ANGLE OF INCIDENCE = 0 DEGREES IMPACT AT CENTER OF DOOR
 - BALLISTIC DESIGN: UL752, LEVEL 4, HPR
 - FIRE RATING: NONE
 - FINISH: PDI STD GREY PRIMER

IMPORTANT NOTE:
WALL MUST BE CAPABLE OF SUPPORTING THE FOLLOWING LOADS:

SEATING DIRECTION
AT JAMBS CONT 297 LBS/IN
AT HEAD CONT 199 LBS/IN
AT BTM OF JAMBS 3,703 LBS

UNSEATING DIRECTION
AT LATCHBOLTS 12,651 LBS
AT REBOUND BARS 2,861 LBS
AT CONTINUOUS HINGE 235 LBS/IN

DATE	MK	DESCRIPTION	BY
8/24/18	1	PER RETURNED DWG	MF

REVISIONS

CUSTOMER:

PROJECT:

PROTECTIVE DOOR INDUSTRIES
HARVEY, ILLINOIS 60426

TITLE			
DB-XB SINGLE BLAST RESISTANT DOOR AND FRAME			
DWG BY	MF	CHKD BY	
DATE	7/5/18	DATE	
SCALE		QA	
DWG NO.	2344-18	SHT NO.	3

NOTICE

THIS IS A CONFIDENTIAL DISCLOSURE LOANED BY PROTECTIVE DOOR IND. SUBJECT TO THE CONDITIONS THAT IT AND THE INFORMATION EMBODIED THEREIN SHALL BE USED ONLY FOR RECORD AND REFERENCE PURPOSES, SHALL NOT BE USED OR CAUSED TO BE USED IN ANYWAY PREJUDICIAL TO THE INTEREST OF THIS COMPANY, SHALL NOT BE REPRODUCED OR COPIED IN WHOLE OR IN PART, AND SHALL BE RETURNED UPON REQUEST.

GENERAL CONDITIONS

P.D.I. WILL NOT BE LIABLE FOR ANY ERRORS OCCURRING TO OTHER TRADES THROUGH THE USE OF THIS DRAWING.
CONTRACTOR TO CHECK ALL DIMENSIONS AT JOB AS P.D.I. ASSUMES NO RESPONSIBILITY FOR GENERAL BUILDING DIMENSIONS.

PLOT SCALE 1=4
2344-3