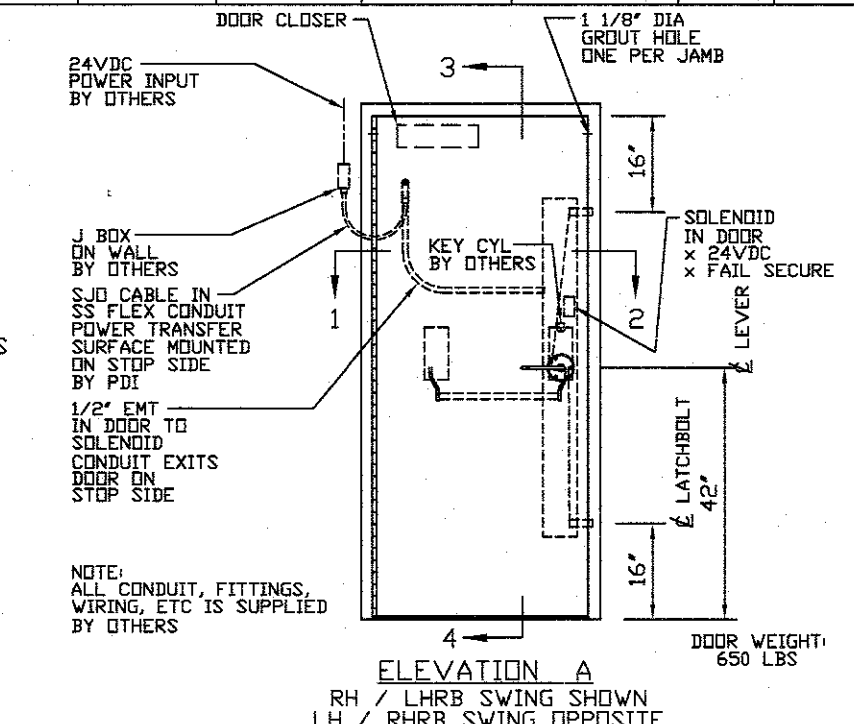
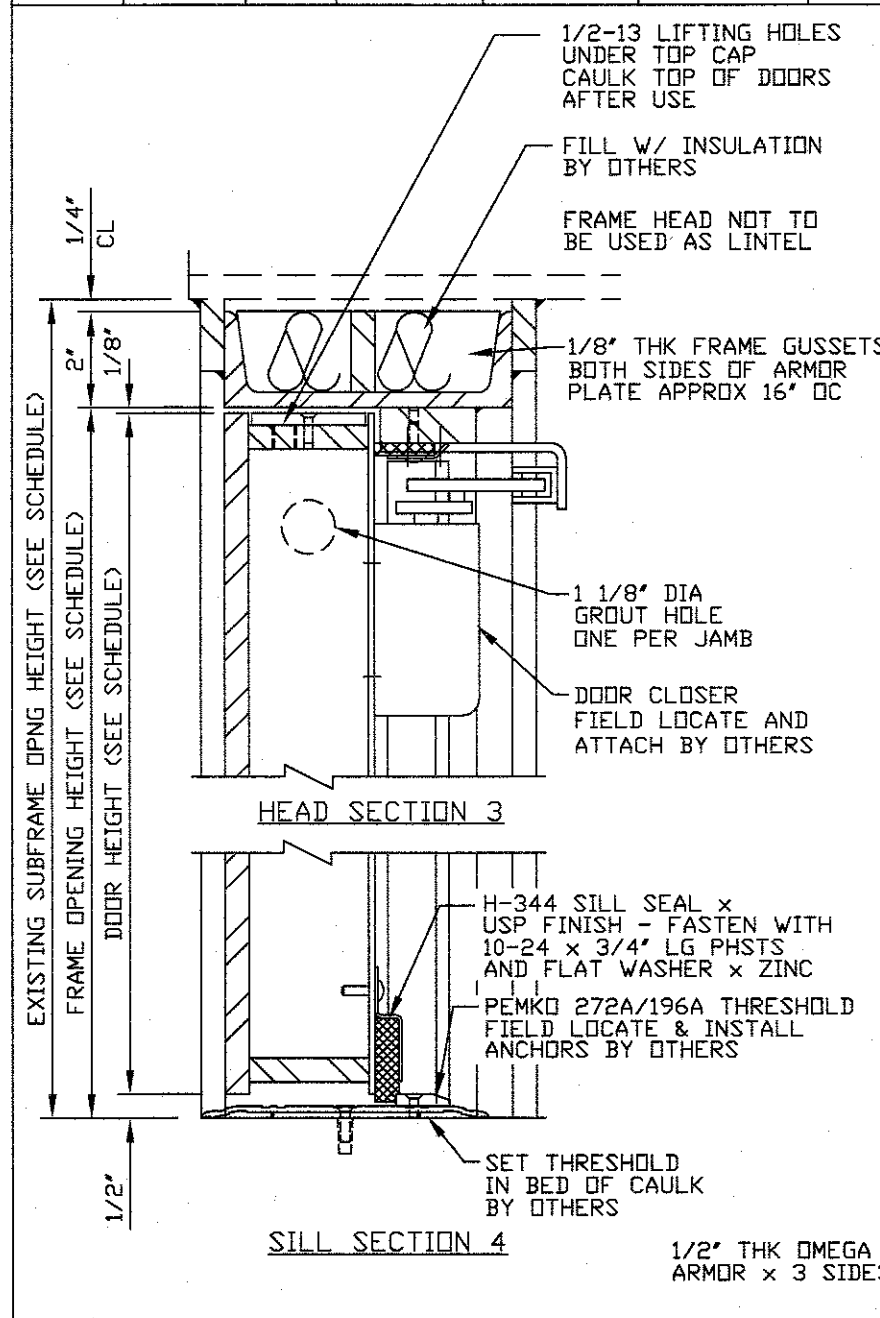
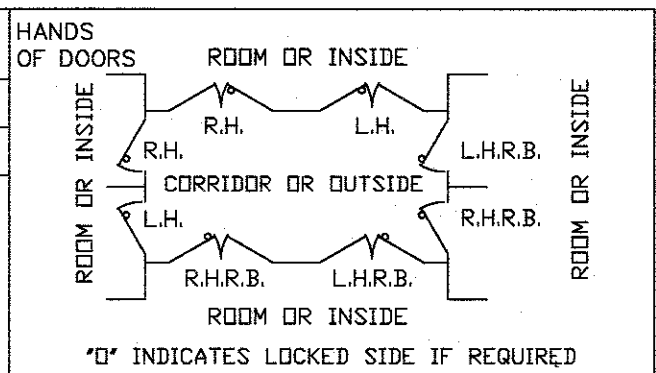


QUAN.	MARK NO	HAND	LOCATION		EXISTING WALL OPNG		FRAME OPNG		DOOR SIZE		DOOR ELEV	SECTIONS				REMARKS	
			HINGE SIDE	STOP SIDE	WIDTH	HEIGHT	WIDTH	HEIGHT	WIDTH	HEIGHT		HINGE	STRIKE	HEAD	SILL		
1	SGL	G01A	RHRB	EXTERIOR	VEST G01	40 1/2"	86 1/4"	36"	84"	35 3/8"	83 3/8"	A	1	2	3	4	



IMPORTANT NOTE:
WALL MUST BE CAPABLE OF SUPPORTING 245 LB/IN PER JAMB IN THE SEATING DIRECTION AND UNSEATING LOADS AS FOLLOWS:
AT LATCHBOLTS 7,326 LBS
AT CONTINUOUS HINGE 137 LBS/IN

FRAME INSTALLATION

- PROPERLY BRACE AND SUPPORT FRAME DURING INSTALLATION.
- JAMBS MUST BE PLUMB.
- HEAD MUST BE LEVEL.
- ALL DIMENSIONS TO BE WITHIN 1/16".
- DIAGONAL DIMENSIONS TO BE TO BE WITHIN 1/8".

6. HARDWARE BY OTHERS:

- MORTISED KEY CYLINDER SHIP TO PDI FOR FACTORY INSTALLATION IF POSSIBLE
- CARD KEY READER
- DOOR STOP

ANY HARDWARE NOT LISTED ABOVE

NOTES:

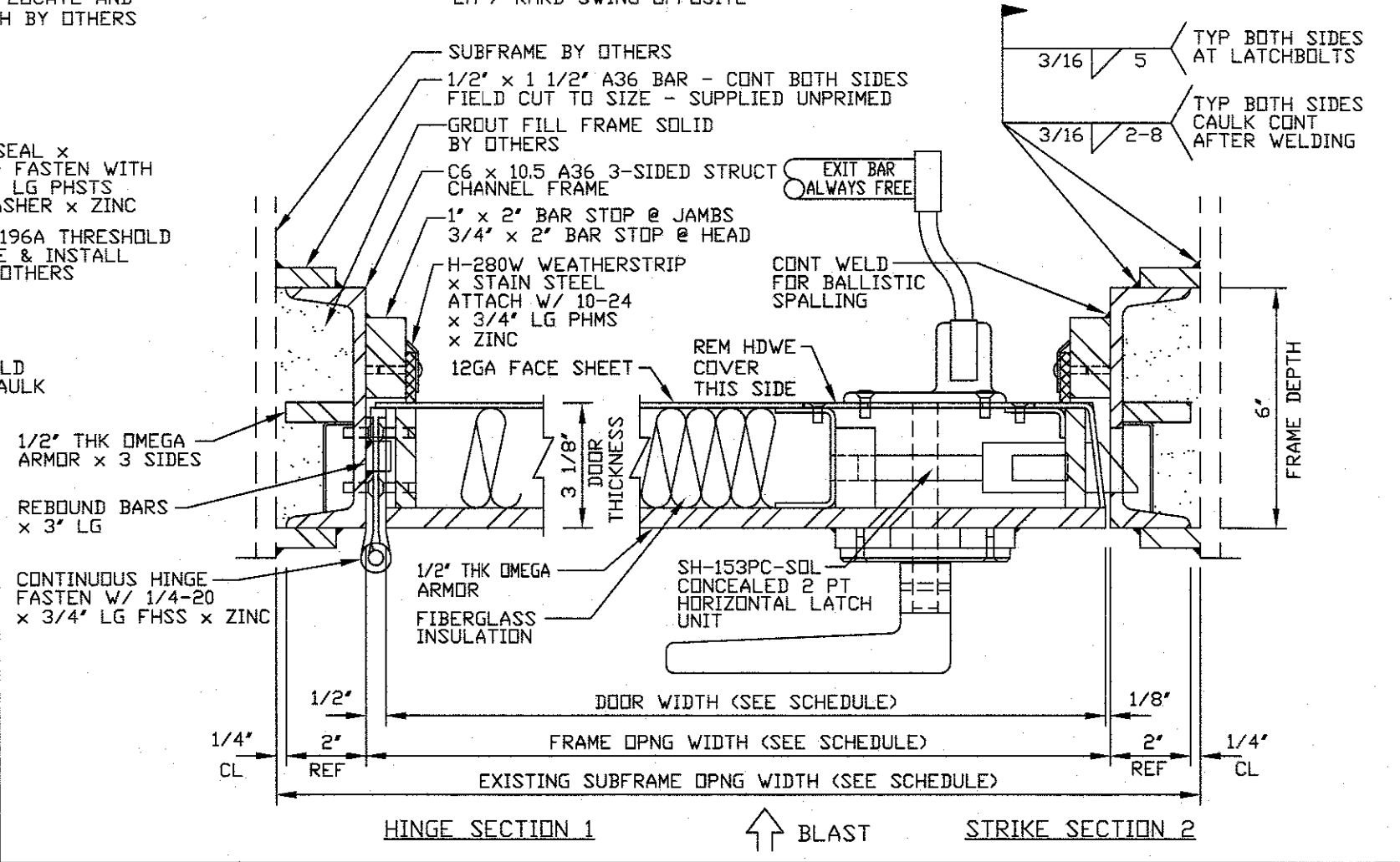
- DESIGN PRESSURE: 14.23 PSI PEAK REFLECTIVE (Pr) SEATING PRESSURE FOR 23.12 MILLISECONDS
- BALLISTIC DESIGN CERTIFICATION: BALLISTIC LEVEL: UL752, LEVEL 4, HPR OR NIJ LEVEL III
PDI WILL FABRICATE THIS UNIT UTILIZING STEELS TESTED TO THE BALLISTIC LEVEL SHOWN. THIS UNIT WILL NOT BEAR AN ACTUAL BALLISTIC LABEL. SEE CATALOG DATA CD-10
- FIRE RATING: NONE
- FINISH: STD GREY PRIMER
- HARDWARE BY PDI:
 - CONTINUOUS HINGE x DOOR HEIGHT 8GA LEAVES x 3/8" DIA PIN x 7" OPEN WIDTH x STN STL x BRUSHED FINISH
 - SH-153PC-SOL 2 PT HORIZONTAL HARDWARE LEVER x EXIT BAR TRIM x US32D FINISH x 24VDC x (LESS CYL)
FUNCTION: BHMA 09 SIM TO STOREROOM POWER SUPPLY TO SOLENOID UNLOCKS EXTERIOR LEVER - SOLENOID FAIL SECURE - EXIT BAR ALWAYS FREE
 - YALE #PR4400 CLOSER x PA x ALUM FINISH
 - PDI H-280W WEATHERSTRIP x STAIN STEEL
 - PDI H-344 SILL SWEEP x USP FINISH
 - PEMKO #272A/196A THRESHOLD x ALUM
 - ARMORED POWER TRANSFER

NOTICE

THIS IS A CONFIDENTIAL DISCLOSURE LOANED BY PROTECTIVE DOOR IND. SUBJECT TO THE CONDITIONS THAT IT AND THE INFORMATION EMBODIED THEREIN SHALL BE USED ONLY FOR RECORD AND REFERENCE PURPOSES, SHALL NOT BE USED OR CAUSED TO BE USED IN ANYWAY PREJUDICIAL TO THE INTEREST OF THIS COMPANY, SHALL NOT BE REPRODUCED OR COPIED IN WHOLE OR IN PART, AND SHALL BE RETURNED UPON REQUEST.

GENERAL CONDITIONS

P.D.I. WILL NOT BE LIABLE FOR ANY ERRORS OCCURRING TO OTHER TRADES THROUGH THE USE OF THIS DRAWING. CONTRACTOR TO CHECK ALL DIMENSIONS AT JOB AS P.D.I. ASSUMES NO RESPONSIBILITY FOR GENERAL BUILDING DIMENSIONS.



DATE	MK	DESCRIPTION	BY
REVISIONS			
CUSTOMER:			
PROJECT:			
PROTECTIVE DOOR INDUSTRIES HARVEY, ILLINOIS 60426			
TITLE DB-XB FLUSH BLAST RESISTANT DOOR AND FRAME			
DWG BY	MF	CHKD BY	
DATE	5/21/20	DATE	
SCALE		QA	
DWG NO.	2438-20	SHT NO.	1

PLOT SCALE 1/4" = 1'-0"

MASTER