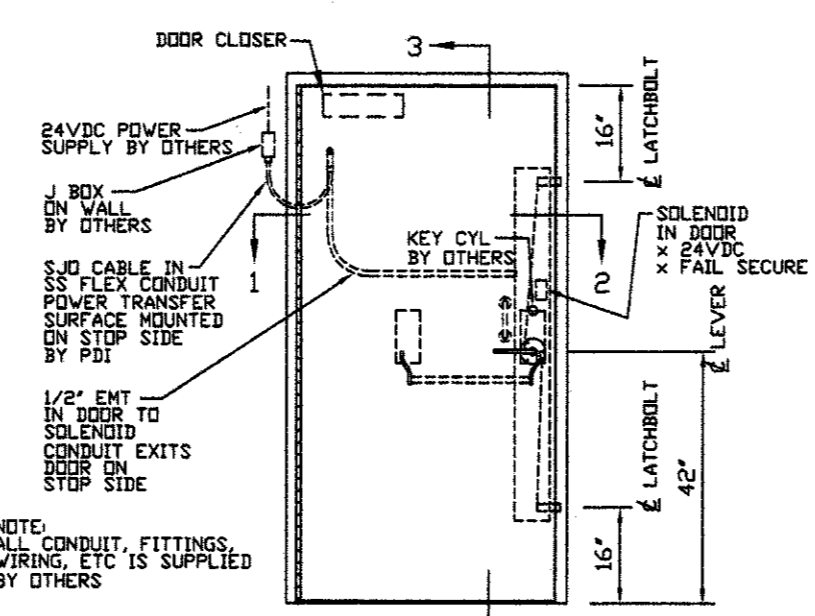
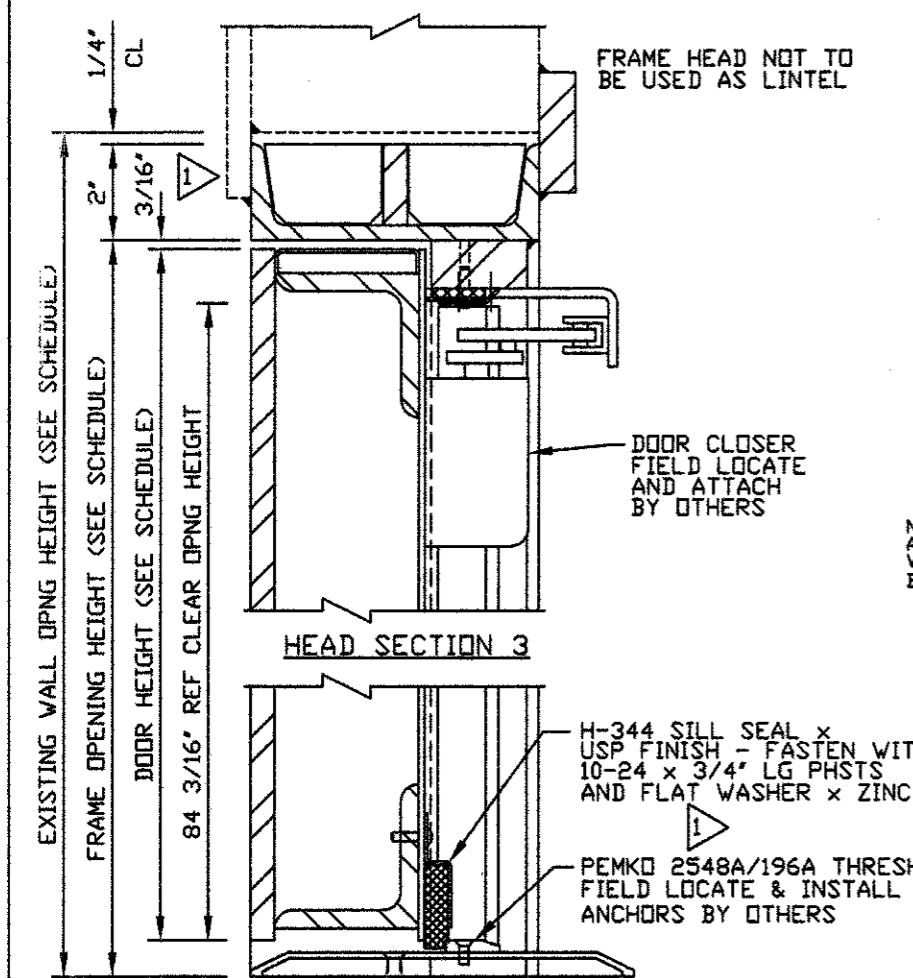
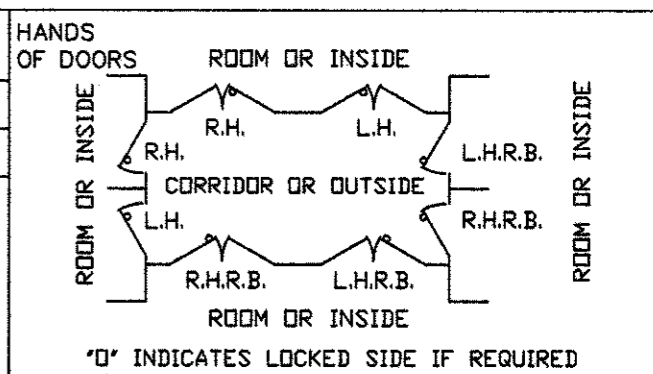


QUAN.	MARK NO	HAND	LOCATION		EXISTING WALL OPNG		FRAME OPNG		DOOR SIZE		DOOR ELEV	SECTIONS				REMARKS	
			HINGE SIDE	STOP SIDE	WIDTH	HEIGHT	WIDTH	HEIGHT	WIDTH	HEIGHT		HINGE	STRIKE	HEAD	SILL		
1	SGL	1	RHRB	EXTERIOR	INTERIOR	47 1/2"	88 1/2"	43"	86 1/4"	42 5/16"	85 5/16"	A	1	2	3	4	

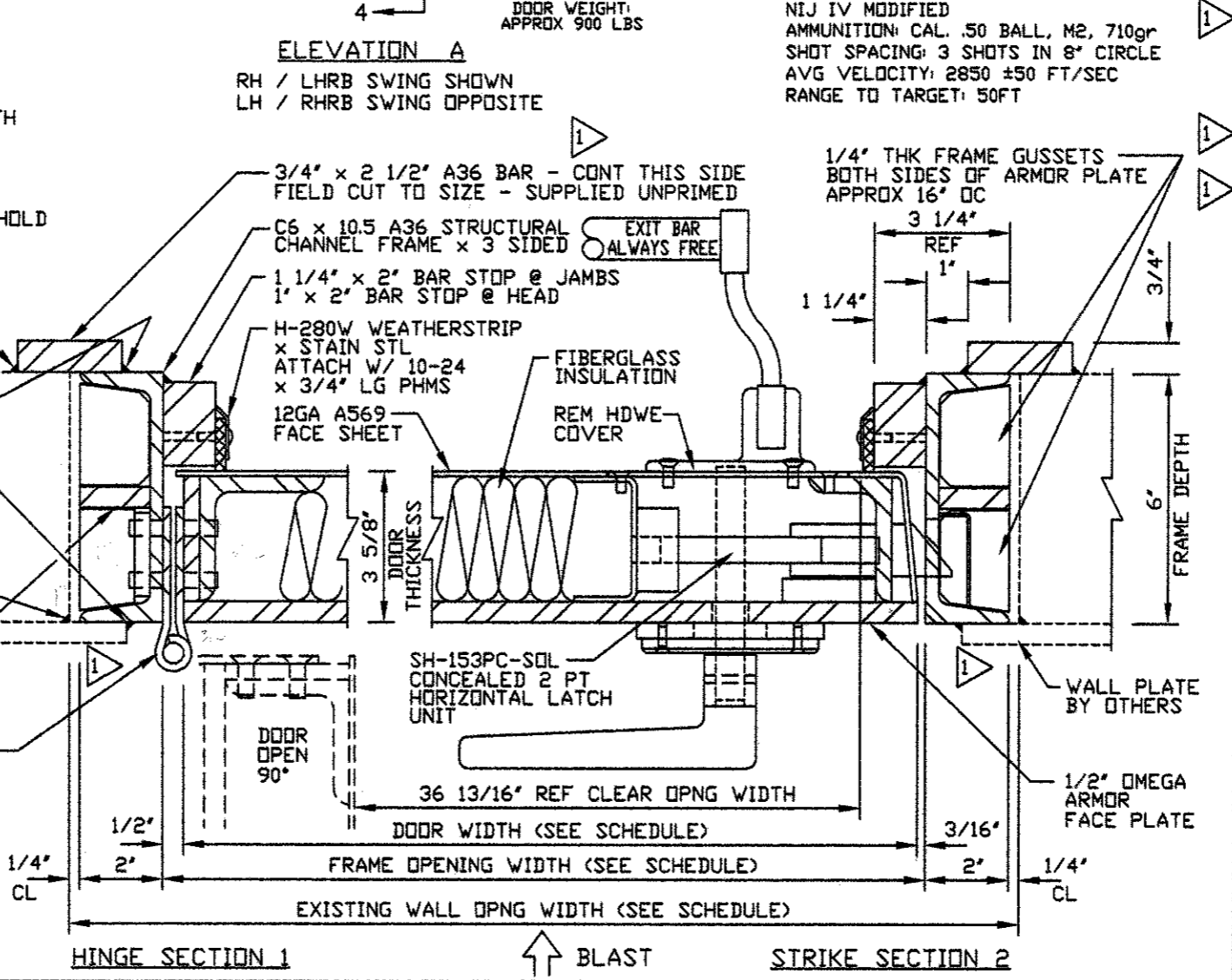
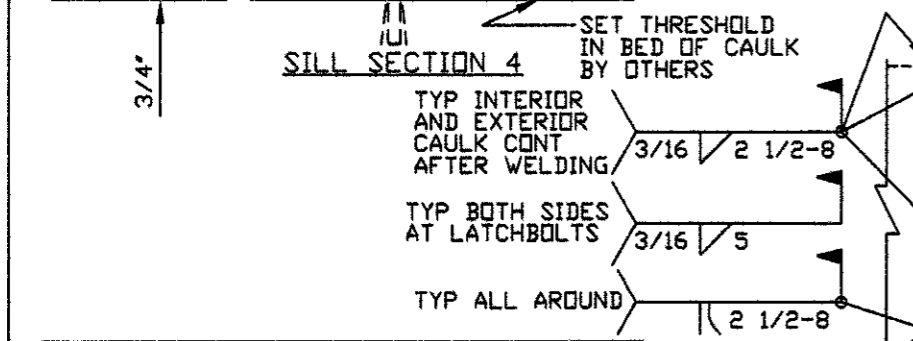


IMPORTANT NOTE:
WALL MUST BE CAPABLE OF SUPPORTING LOADS AS FOLLOWS:
SEATING LOADS
353 LBS/IN MAX CONTINUOUS ON JAMBS
5,097 LBS MAX CONCENTRATED AT TOP & BTM OF EACH JAMB
UNSEATING LOADS
135 LBS/IN MAX CONT ON HINGE JAMB
1,857 LBS MAX CONCENTRATED AT TOP & BTM OF HINGE JAMB
7,632 LBS MAX CONCENTRATED AT EACH LATCHBOLT

FRAME INSTALLATION

1. PROPERLY BRACE AND SUPPORT FRAME DURING INSTALLATION
2. JAMBS MUST BE PLUMB
3. HEAD MUST BE LEVEL
4. ALL DIMENSIONS TO BE WITHIN 1/16"
5. DIAGONAL DIMENSIONS TO BE TO BE WITHIN 1/8"

BALLISTIC LEVEL:
NIJ IV MODIFIED
AMMUNITION: CAL. .50 BALL, M2, 710gr
SHOT SPACING: 3 SHOTS IN 8" CIRCLE
AVG VELOCITY: 2850 ±50 FT/SEC
RANGE TO TARGET: 50FT



NOTICE
THIS IS A CONFIDENTIAL DISCLOSURE LOANED BY PROTECTIVE DOOR IND. SUBJECT TO THE CONDITIONS THAT IT AND THE INFORMATION EMBODIED THEREIN SHALL BE USED ONLY FOR RECORD AND REFERENCE PURPOSES, SHALL NOT BE USED OR CAUSED TO BE USED IN ANYWAY PREJUDICIAL TO THE INTEREST OF THIS COMPANY, SHALL NOT BE REPRODUCED OR COPIED IN WHOLE OR IN PART, AND SHALL BE RETURNED UPON REQUEST.

GENERAL CONDITIONS
P.D.I. WILL NOT BE LIABLE FOR ANY ERRORS OCCURRING TO OTHER TRADES THROUGH THE USE OF THIS DRAWING.
CONTRACTOR TO CHECK ALL DIMENSIONS AT JOB AS P.D.I. ASSUMES NO RESPONSIBILITY FOR GENERAL BUILDING DIMENSIONS.

- NOTES:**
1. DESIGN PRESSURE:
16 PSI PEAK REFLECTIVE SEATING PRESSURE FOR 50 MSEC W/ REBOUND AS CALCULATED
 2. BALLISTIC CERTIFICATION: PDI WILL FABRICATE THESE UNITS UTILIZING STEELS TESTED TO THE BALLISTIC LEVEL SHOWN
 3. FIRE RATING: NONE
 4. FINISH: STD GREY PRIMER
 5. HARDWARE BY PDI:
 - (1) CONTINUOUS HINGE x DOOR HEIGHT 8GA LEAVES x 3/8" DIA PIN x 7" OPEN WIDTH x STN STL x BRUSHED FINISH
 - (1) SH-153PC-SQL 2 PT HORIZONTAL HARDWARE LEVER x EXIT BAR TRIM x US32D FINISH x 24VDC x (LESS CYL)
FUNCTION: BHMA 09 SIM TO STOREROOM POWER SUPPLY TO SOLENOID UNLOCKS EXTERIOR LEVER
SOLENOID FAIL SECURE - EXIT BAR ALWAYS FREE
 - (1) RECTIFIER 24VAC TO 24VDC
 - (1) BEST #1E74-C4-RP3-626 MORT CYL HOUSING
 - (1) YALE #406 DOOR CLOSER x PA x ALUM FIN x HD RIGID ARM
 - (1) ROCKWOOD #131 PULL HANDLE x US32D FINISH
 - (1) PDI H-280W WEATHERSTRIP x STAIN STL
 - (1) PDI H-344 SILL SWEEP x USP FINISH
 - (1) PEMKO #2548A/196A THRESHOLD x ALUM
 - (1) ARMORED POWER TRANSFER
 6. HARDWARE BY OTHERS:
 - (1) BEST 7 PIN REM CORE, (1) CARD KEY READER
 - (1) ANY HARDWARE NOT LISTED ABOVE

DATE	MK	DESCRIPTION	BY
9/26/13	1	PER APPROVAL EMAILS	MF

REVISIONS

CUSTOMER:

PROJECT:

PROTECTIVE DOOR INDUSTRIES
HARVEY, ILLINOIS 60426

TITLE DB-XB SGL FLUSH BLAST RESISTANT DOOR AND FRAME			
DWG BY	MF	CHKD BY	
DATE	9/10/13	DATE	
SCALE		QA	
DWG NO.	2070-13	SHT NO.	1

PLOT SCALE 1/4" = 1'-0"

MASTER