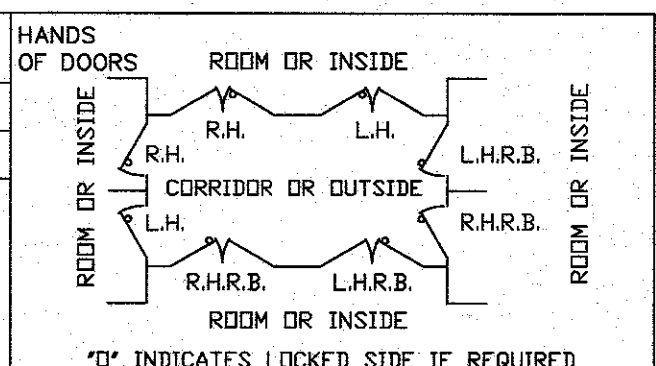


| QUAN. | MARK NO | HAND | LOCATION | | EXISTING WALL OPNG | | FRAME OPNG | | DOOR SIZE | | DOOR ELEV | SECTIONS | | | | REMARKS |
|-------|---------|------|------------|-----------|--------------------|---------|------------|--------|-----------|---------|-----------|----------|--------|------|------|---------|
| | | | HINGE SIDE | STOP SIDE | WIDTH | HEIGHT | WIDTH | HEIGHT | WIDTH | HEIGHT | | HINGE | STRIKE | HEAD | SILL | |
| 1 | SGL | | | | 40 1/2" | 86 1/4" | 36" | 84" | 35 1/2" | 83 3/8" | A | 1 | 2 | 3 | 4 | |



- NOTES:**
- DESIGN PRESSURE: 100 PSF MAX STATIC EQUIVALENT PRESSURE WITH 100% REBOUND
 - FIRE RATING: UL 3 HOUR A FIRE LABEL
 - BALLISTIC LEVEL: UL LEVEL 3 SPSA .44 MAGNUM, 240 GR, 1350-1485 FPS, 3 SHOTS SPACED ON 4 1/2" TRIANGLE, 0° OBLIQUITY
 - FINISH: STD GREY PRIMER
 - HARDWARE BY PDI:
 - (1) CONTINUOUS HINGE-11GA STAIN STEEL LEAVES x 1/4" DIA STAIN STL PIN x BRUSHED FINISH
 - (1) CORBIN #ML2055 MORTISED LOCKSET x LWA LEVER TRIM x US32D FINISH
 FUNCTION: CLASSROOM
 (MODIFIED TO RESIST PRESSURE - SS LATCHBOLT)
 - (1) YALE #4400 DOOR CLOSER x PA x ALUM FIN
 - (2) FRAME SILENCERS
 - (1) PEMKO #270A THRESHOLD x ALUM
 - HARDWARE BY OTHERS:
 - (1) MORTISED KEY CYLINDER
 ALL OTHER HARDWARE NOT LISTED ABOVE.
- NOTE:**
ALL HARDWARE SHOWN ON THIS DRAWING IS FOR REFERENCE ONLY
ACTUAL SIZES WILL VARY

| DATE | MK | DESCRIPTION | BY |
|------|----|-------------|----|
| | | | |

REVISIONS

CUSTOMER:
PROJECT:

PROTECTIVE DOOR INDUSTRIES
HARVEY, ILLINOIS 60426

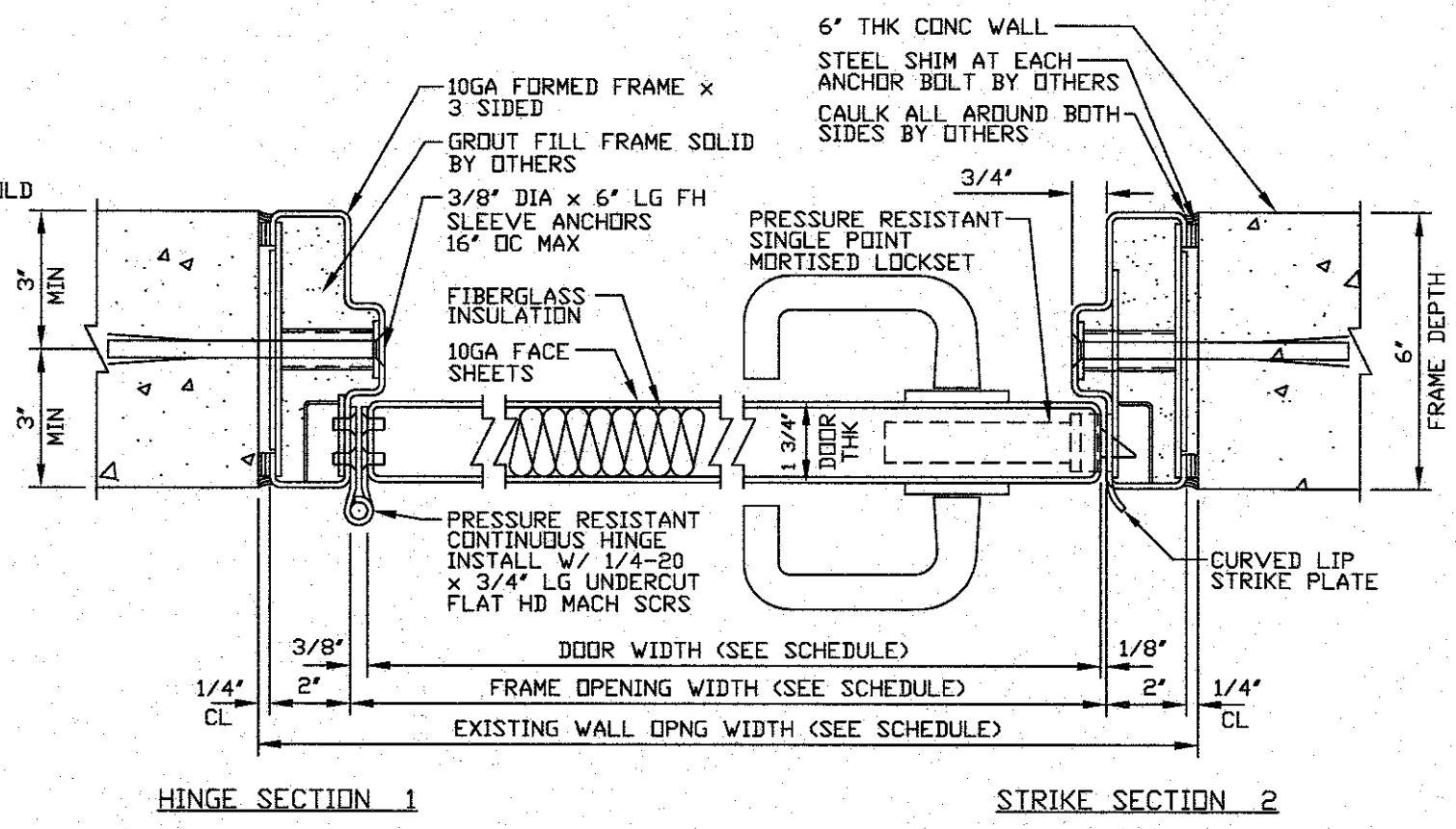
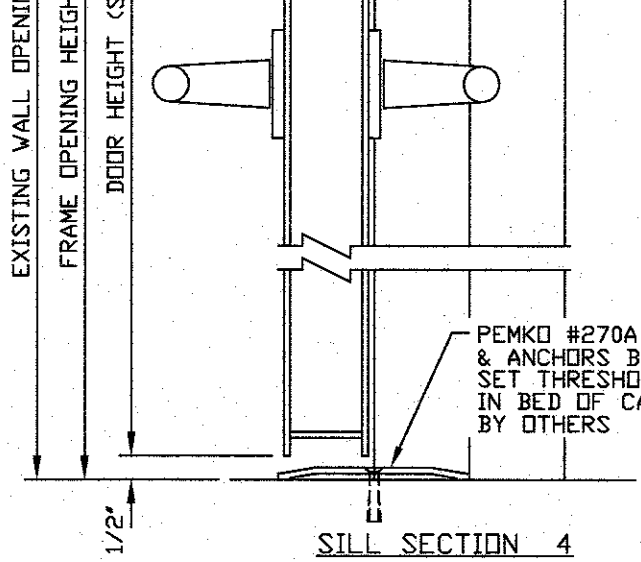
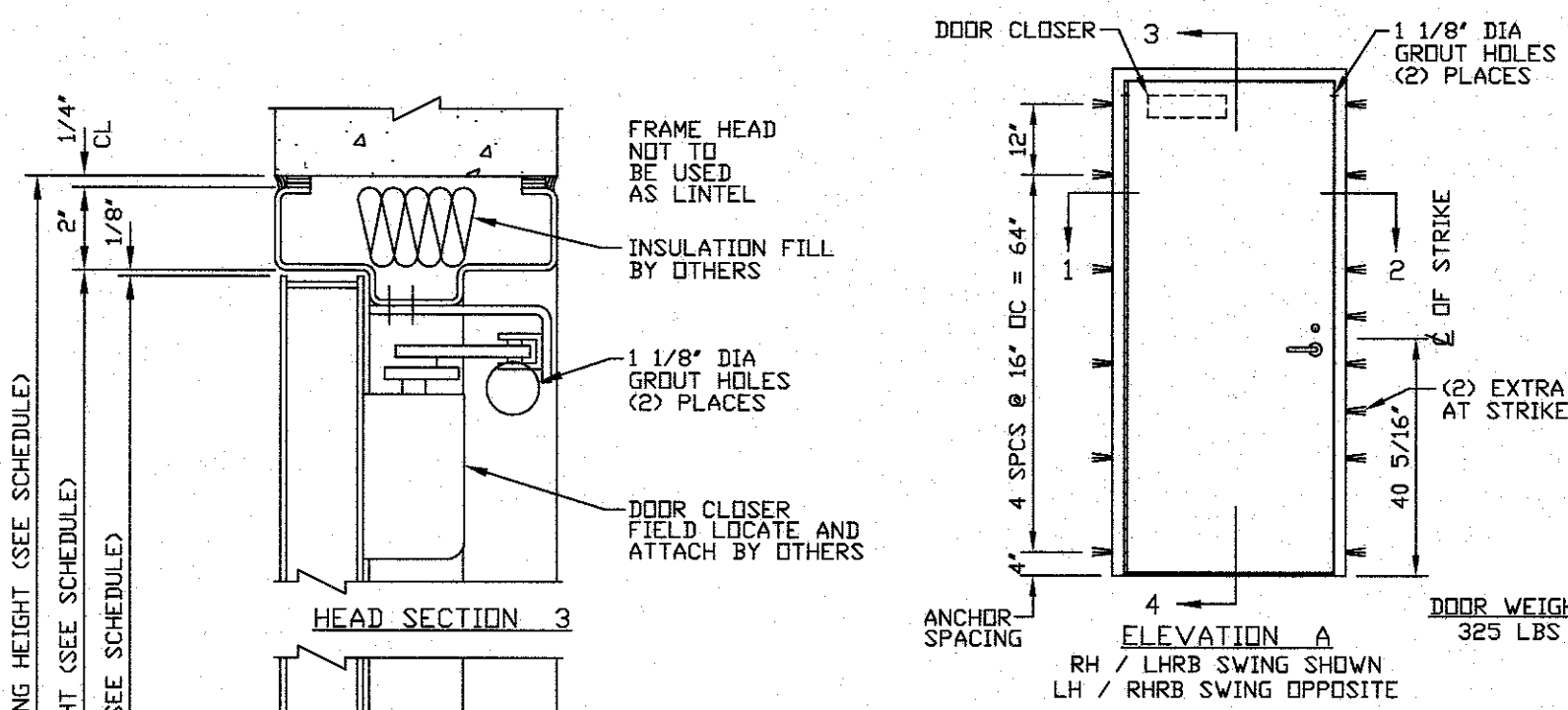
TITLE DB-100B SINGLE BLAST RESISTANT DOOR AND FRAME

| | |
|---------|---------|
| DWG BY | CHKD BY |
| DATE | DATE |
| SCALE | QA |
| DWG NO. | SHT NO. |

IMPORTANT NOTE:
WALL MUST BE CAPABLE OF SUPPORTING 14 LB/IN PER JAMB IN THE SEATING AND UNSEATING DIRECTION WITH A CONCENTRATED LOAD AT THE LATCHBOLT OF 1,252 LBS IN THE UNSEATING DIRECTION.

- FRAME INSTALLATION**
- PROPERLY BRACE AND SUPPORT FRAME DURING INSTALLATION.
 - JAMBS MUST BE PLUMB.
 - HEAD MUST BE LEVEL.
 - ALL DIMENSIONS TO BE WITHIN 1/16".
 - DIAGONAL DIMENSIONS TO BE TO BE WITHIN 1/8".

BALLISTIC CERTIFICATION:
PDI WILL FABRICATE THIS UNIT UTILIZING STEEL TESTED TO THE BALLISTIC LEVEL SHOWN - THIS UNIT WILL NOT BEAR A UL752 BALLISTIC LABEL



NOTICE
THIS IS A CONFIDENTIAL DISCLOSURE LOANED BY PROTECTIVE DOOR IND. SUBJECT TO THE CONDITIONS THAT IT AND THE INFORMATION EMBODIED THEREIN SHALL BE USED ONLY FOR RECORD AND REFERENCE PURPOSES, SHALL NOT BE USED OR CAUSED TO BE USED IN ANYWAY PREJUDICIAL TO THE INTEREST OF THIS COMPANY, SHALL NOT BE REPRODUCED OR COPIED IN WHOLE OR IN PART, AND SHALL BE RETURNED UPON REQUEST.

GENERAL CONDITIONS
P.D.I. WILL NOT BE LIABLE FOR ANY ERRORS OCCURRING TO OTHER TRADES THROUGH THE USE OF THIS DRAWING.
CONTRACTOR TO CHECK ALL DIMENSIONS AT JOB AS P.D.I. ASSUMES NO RESPONSIBILITY FOR GENERAL BUILDING DIMENSIONS.

PLOT SCALE 1=4