

Care System Levicare Q140

LeviCare Hoist Q140

PKLC-01

Main product features:

- adjustable boom length;
- various installation possibilities depending on the architectural conditions of the room;
- possibility to adjust the hoist to small, restrictive areas;
- maximum user weight 140 kg and 180 degrees turning capacity;
- the lightest wall mounted hoist available on the market;
- the possibility to move the hoist to bases installed in other rooms;
- minimum interference in the structure of the building;
- mains or battery powered;
- equipped with a special safety feature preventing from slipping out of the base.

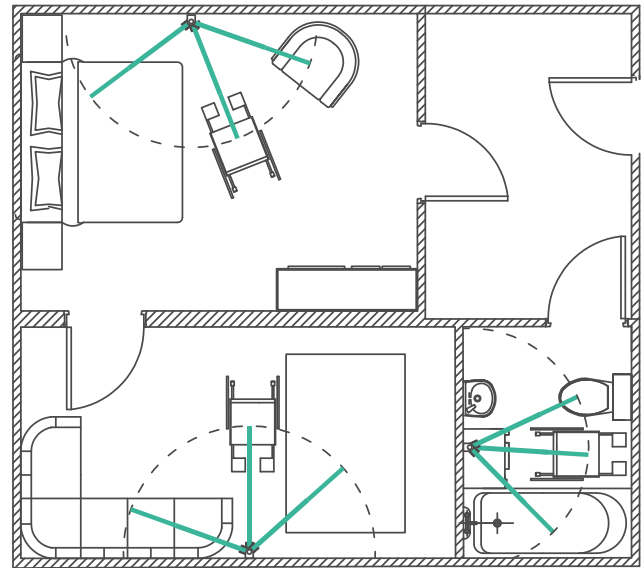


Q140 System components:



The use of LeviCare Q140:

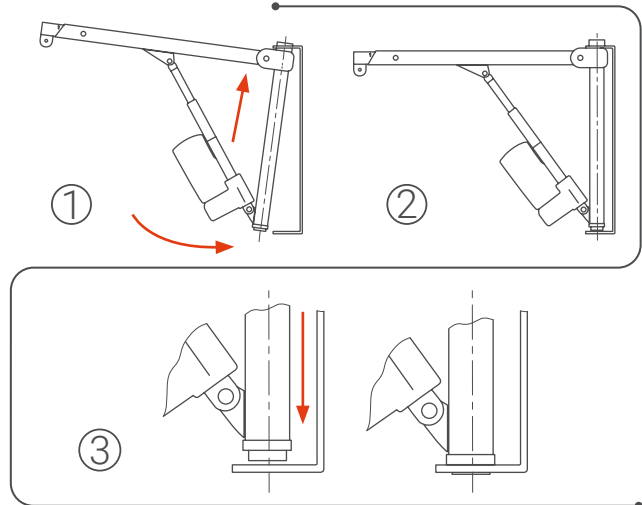
The LeviCare Q140 is a versatile system which can be adapted to any room. Innovative way of installation allows to use one hoist with many bases. The device can be used as a transport, bath, toilet or pool hoist. Q140 hoists are a common solution to transfer in harbours or at the stables to enable the transfer of people to horses, kayaks, boats, sailboats or motorboats.



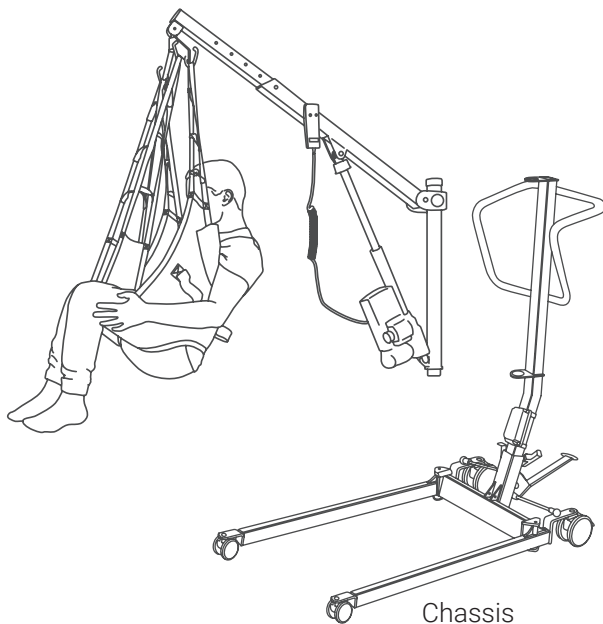
Installation options:

Installation of the LeviCare Q140 hoist is carried out by qualified specialists to ensure functionality and safety of use. Prior to the installation, the architectural conditions of the rooms and the strength of the walls and ceilings are checked. One of the installation options is selected based on the customer's needs and the conditions of the room. This means that the Q140 can be installed in any room and meets the needs of both the person with a disability and the carer.

The LeviCare Q140 can also be installed on a chassis.



Installation methods for the LeviCare Q140 hoist:



Chassis
LCQ140-R

LeviActive wall frame
LA-RM

Wall base
APLC-04

Floor pole
APLC-06

Floor - ceiling
pole
APLC-05

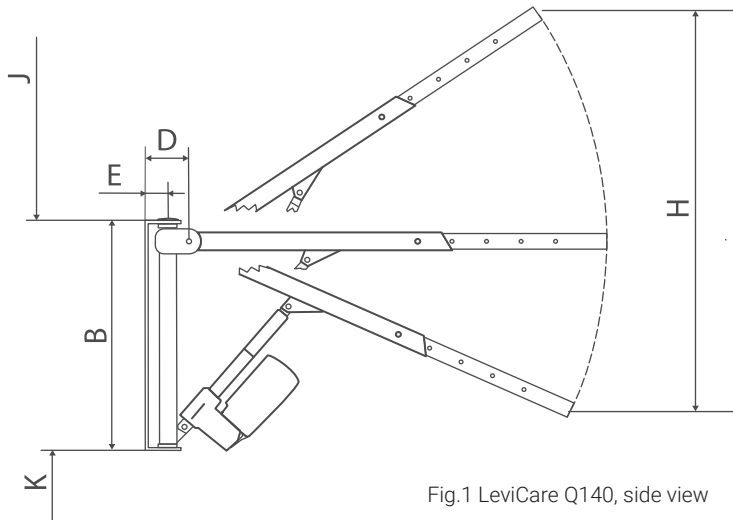


Fig.1 LeviCare Q140, side view

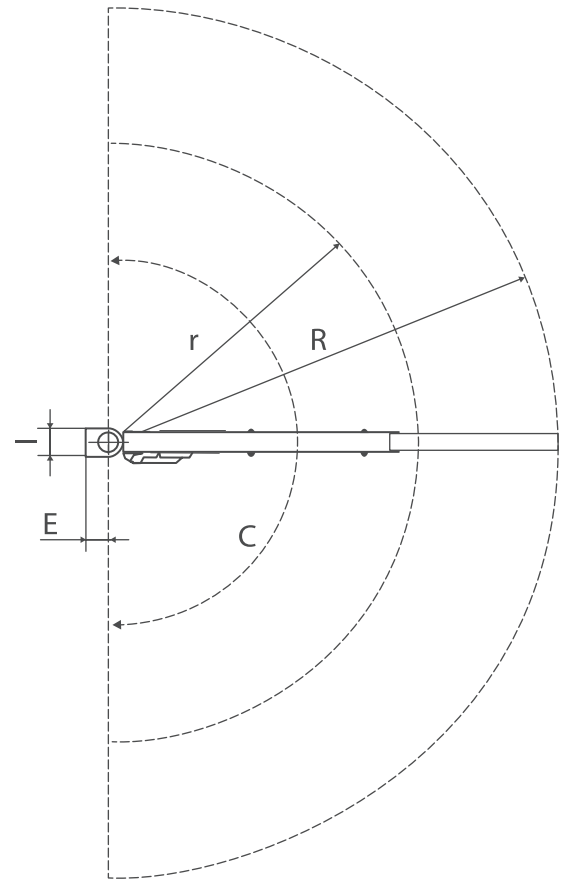


Fig. 2 LeviCare Q140 top view

Dimensions (Fig.1,2)

R - Lifting arm / boom radius	920 mm- 1340 mm 36.2- 52.7 inch
B - Overall height	735 mm/ 28.9 inch
C - Rotation radius	0° – 180°
D - The distance between the horizontal pivot and a wall	125 mm / 4.9 inch
E - The distance between the vertical pivot and a wall	65 mm / 2.5 inch
H - Lifting range	1130mm / 44.4 inch
I - Base width	80 mm / 3.15 inch
J - Minimum fixing distance from the ceiling	670 mm / 26.4 inch
K - Standard base mounting height	850 mm / 33.5 inch
Overall weight (not incl. base, spreader and sling)	12,5 kg / 27.5 lbs
Maximum load capacity	140 kg / 308.6 lbs
Force required to operate remote control	≤5N
Noise level	≤44dB

Electrical specification

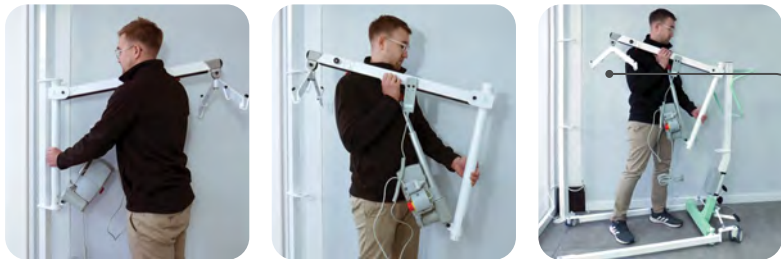
Power supply to the control box	230V AC, 50Hz, 1000mA
Power supply out of the control box	24V DC, 100VA (Max)
Actuator power supply	24V DC
Maximum power consumption (actuator)	7A
Q140 battery	2,2Ah; 24V
Ingress Protection (IP) Rating of Q140 battery	IP66
Ingress Protection (IP) Rating of the control box	IP66
Ingress Protection (IP) Rating of the actuator	IP66
Ingress Protection (IP) Rating of the remote control	IP66
Operating cycle	10% or 1 minute of continuous operation followed by a 9 minute break



Chassis

LCQ140-R

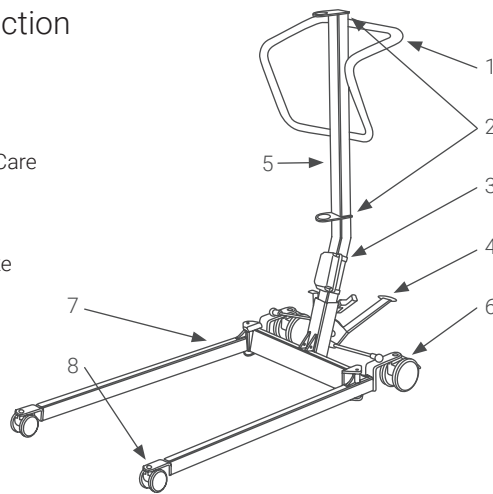
The chassis together with the battery power supply allows for the LeviCare Q140 hoist to be used as a mobile hoist. It consists of two detachable elements: a mast and the chassis. Attaching the Q140 hoist to a chassis is extremely simple and the high quality components of the chassis allow for easy transfer. The chassis has adjustable legs spreading, which ensures trouble-free access under a wheelchair, a bathtub, an armchair or a bed. This is ideal for trips away from home. The maximum load capacity for the Q140 Hoist in the chassis is 110 kg.



Maximum load capacity of the chassis is 110 kg.

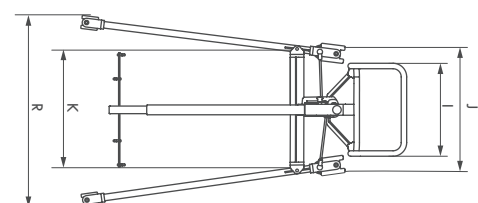
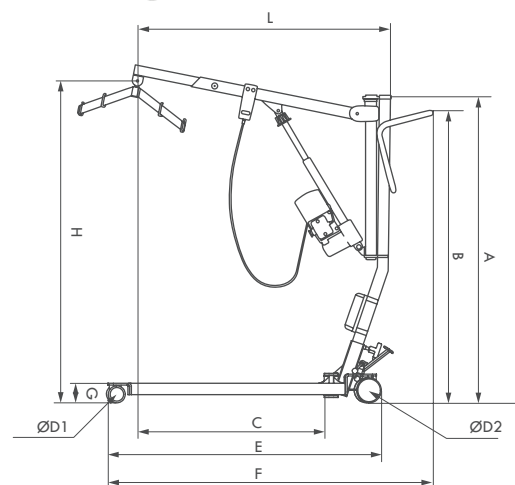
Chassis construction

1. Push handle
2. Attachment point for LeviCare Q140 hoist
3. Battery pack for LeviCare Q140 hoist
4. Foot pedal
5. Chassis mast
6. Rear castor with brake
7. Base legs
8. Front castor



CHASSIS DIMENSIONS

A – device height	1400 mm / 55.1 inch
B – push handle height	980 – 1310 mm / 38.5 – 51.5 inch
C – range of operating depth	550 – 750 mm / 21.6 – 29.5 inch
E – base length	1200 mm / 47.2 inch
F – device length	1510 mm / 59.4 inch
G – legs height	88 mm / 3.5 inch
H – lifting range	1020 – 1880 mm / 40.1 - 74.0 inch
I – push handle width	522 mm / 20.5
J – device width	630 mm / 24.8
K – inner working area width	530 mm / 20.8 inch
L – boom length in the mast	900 – 1080 mm / 35.4 – 42.5 inch
R – legs spacing range	620 – 1080 mm / 24.4 – 42.5 inch
Ø D1 – castor diameter, front	75 mm / 2.9 inch
Ø D2 – castor diameter, back	100 mm / 3.9 inch
Total weight (without the hoist)	29 kg / 63.9 lbs
Maximum load capacity	110 kg / 242.5 lbs



Accessories



Flat spreader bar

APLC-01

A standard flat (four-point) spreader bar for the hoist enables the transfer of a disabled person in a sitting position. It can be used with any type of sling.



Side spreader bar

APLC-02

A side spreader bar (four-point) increases the comfort and flexibility of the lifted person, especially for obese people. It enables transfer in a sitting or semi-lying position. Can be used with any type of sling. Available in different sizes.



Eight-point spreader bar

APLC-03

The eight-point spreader bar allows to lift the user in the supine position only. Requires a special eight-point sling for lifting in the lying position.



Rotation lock

LA-B-Q140

A side spreader bar (four-point) increases the comfort and flexibility of the lifted person, especially for obese people. It enables transfer in a sitting or semi-lying position. Can be used with any type of sling. Available in different sizes.



Q140 Adapter

APLC-08

Improves turning ability and increases the range of the Q140 hoist by adding an additional axle of turnover.



Battery LeviCare Q140 (external)

APLC-10

An external battery allows the Q140 hoist to be used without connecting to the main power supply.



LeviCare scales

APLC-07

A device that weighs the user during lifting. Compatible with the Q140 hoist and any spreader bar.

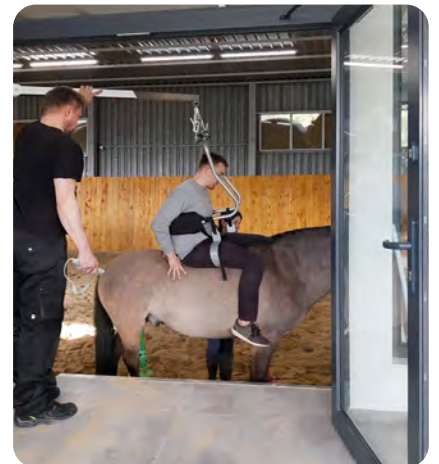


LeviActive

PKLC-A (excl. Q140 hoist)

LeviActive as an accessory for the LeviCare Q140 boom is the perfect addition and supplement for those who plan to do non-weight bearing exercises at home or in a physiotherapy clinic.

Finished projects



Mobile hoists

LeviCare mobile hoist J160/J190

J160/190-M/E

The main advantages of a mobile hoist:

- different versions of devices dedicated to different applications;
- replaceable batteries;
- wide lifting range, including the possibility of lifting from the floor level;
- no interference in the structure of the building;
- exchangeable spreader bars and accessories;
- control via intuitive remote control;
- battery powered (charged from the mains);
- easy to store and transport (possible to fold).



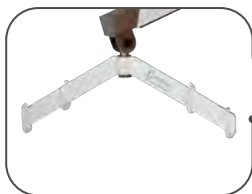
Possibility to dismantle the hoist for transport



Comfortable bar



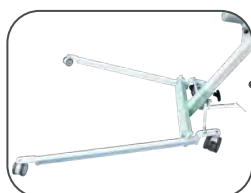
The hoist is operated by a handy remote control or a control panel on the control box



exchangeable spreader bars



Replaceable batteries



Leg spread adjustments (electric or manual)



Electrical leg spreading via remote control



Best quality braked castor

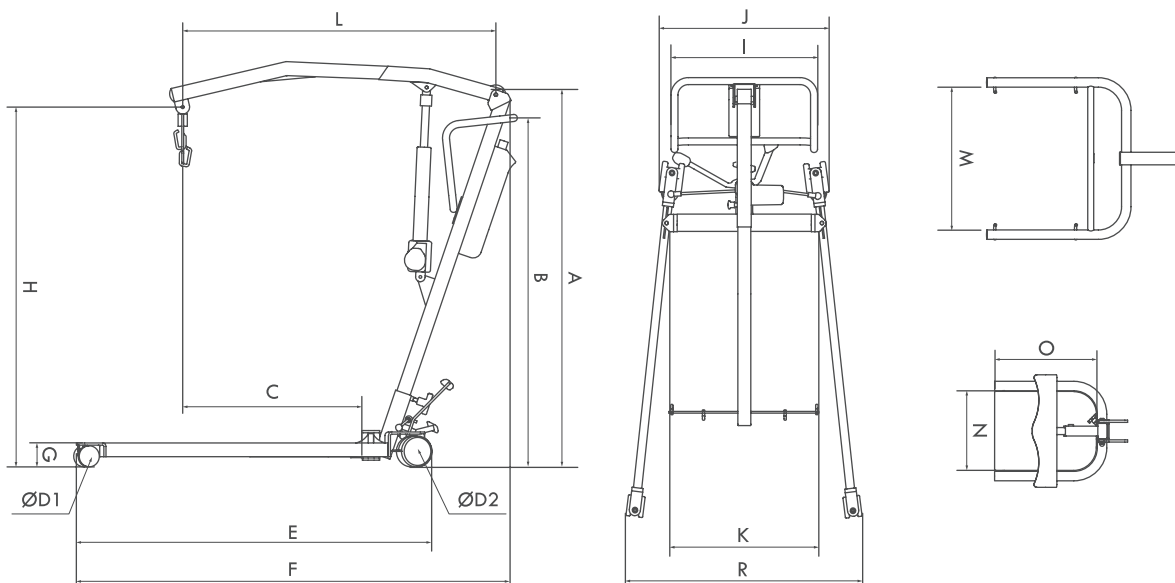


Mobile hoist dimensions

A – device height	1300 mm / 51.2 inch
B – push handle height	850 – 1170 mm / 33.5 – 46 inch
C ^P – range of operating depth (b. for lifting)	590 mm / 23.2 inch
C ^I – range of operating depth (b. for upright positioning)	480 mm / 18.9 inch
E – base length	1190 mm / 46.8 inch
F – device length	1510 mm / 59.4 inch
G – legs height	88 mm / 3.5 inch
H ^P – lifting range (b. for lifting)	795 – 2065 mm / 31.2 – 81.3 inch
H ^I – lifting range (b. for upright positioning)	985 – 2060 mm / 38.8 – 81.1 inch
I – push handle width	520 mm / 20.5 inch
J – device width	630 mm / 24.8 inch
K – inner working area width	530 mm / 20.9 inch
L ^P – Boom length in the mast (b. for lifting)	1060 mm / 41.7 inch
L ^I – Boom length in the mast (b. for upright positioning)	950 mm / 37.4 inch
M – inner area for raising upright	505 mm / 19.9 inch
N – platform for raising upright width	360 mm / 14.2 inch
O – platform for raising upright depth	360 mm / 14.2 inch
P – shin support height	385 mm / 325 mm / 15.1 / 12.8 inch
R – legs spreading range (mechanical/electrical leg spreading)	620 – 1110/620 – 1220 mm 24.4 – 43.7 / 24.4 – 48 inch
Ø D1 – castor diameter, front	75 mm / 2.9 inch
Ø D2 – castor diameter, back	100 mm / 3.9 inch
Total weight (without without a spreader bar and a sling)	38 – 39 kg / 83.7 – 85.9 lbs
Maximum load capacity	160/190 kg / 352.7 – 418.8 lbs
Noise level	≤44dB

Electrical data

Charger	Input: 100 - 240V AC, 50/60Hz Output: 28.8V DC, 1500mA
Battery	24V DC
IP Protection: control box	IP66
IP Protection: actuator (upper/ bottom)	IP66/IP54
IP Protection: manual control unit	IP66
Operating cycle	10%max 2min ON/ 18min OFF
Operating when loaded (lifting, lowering)	60 cycles in a full lifting range and a load of 130kg
Average lifting / lowering time	38 s
Average leg spreading time	~2 s





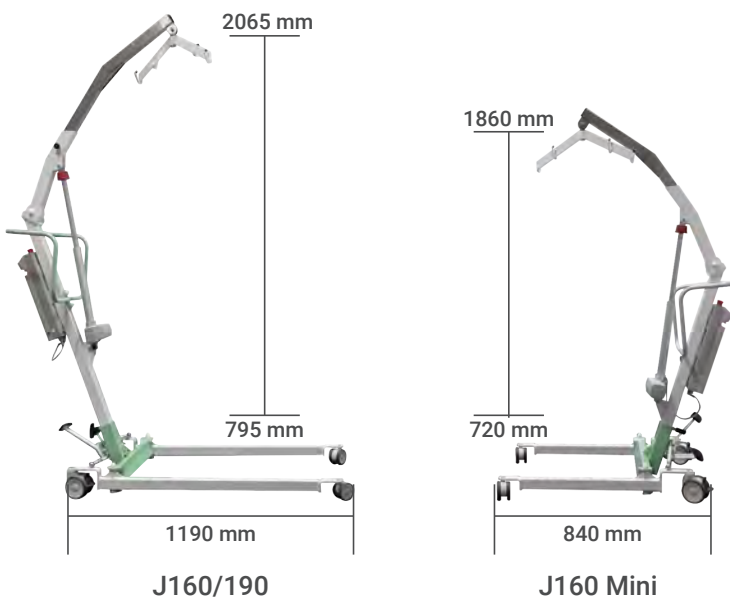
LeviCare Mobile Hoist J160 Mini

J160-M/E-MINI

The LeviCare J160 Mini has all the advantages of the J160/190, but with the difference of its compact dimensions. Dedicated to users with limited living space. It is perfect for areas where limited space does not allow for free manoeuvring of a standard size hoist.



Lifting range in comparison with LeviCare J160/190:

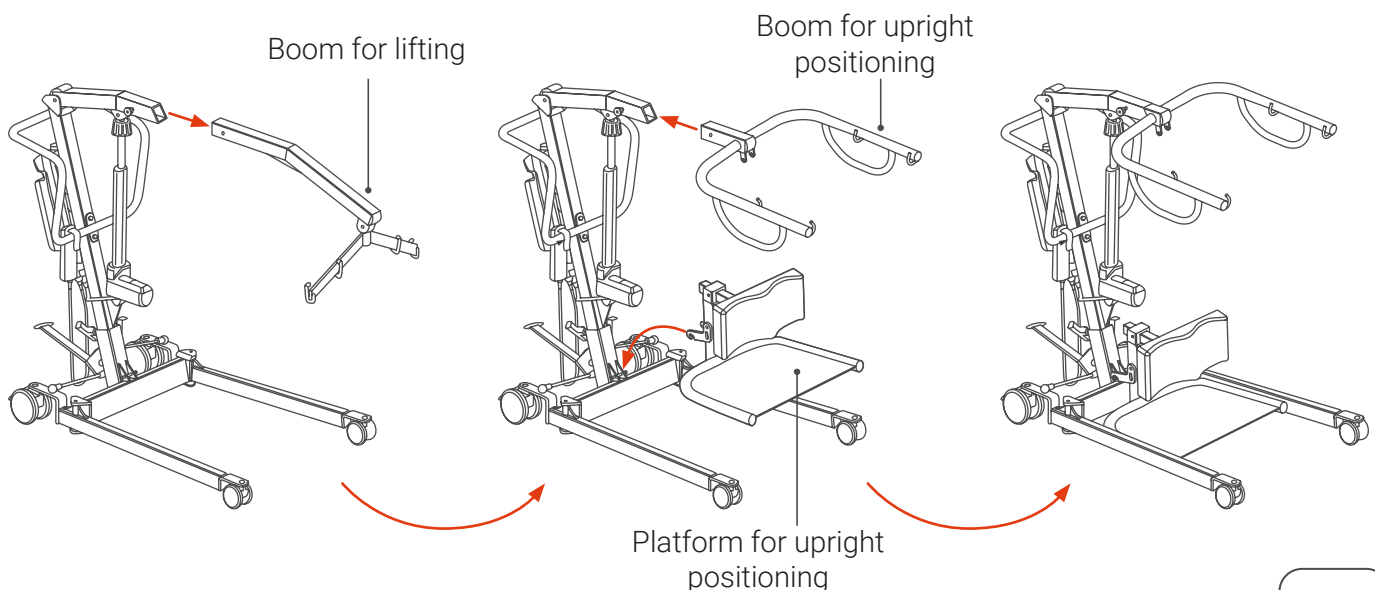


Electrical leg spreading via remote control



Operated by remote control or panel on the control box

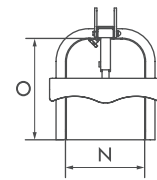
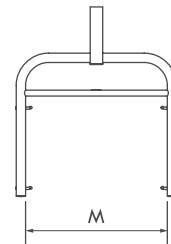
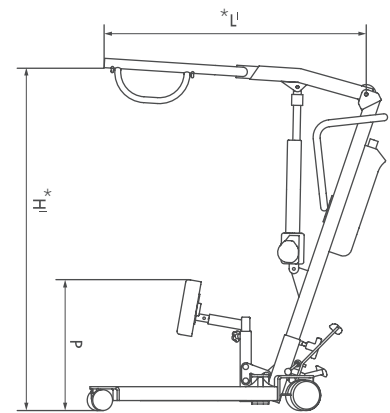
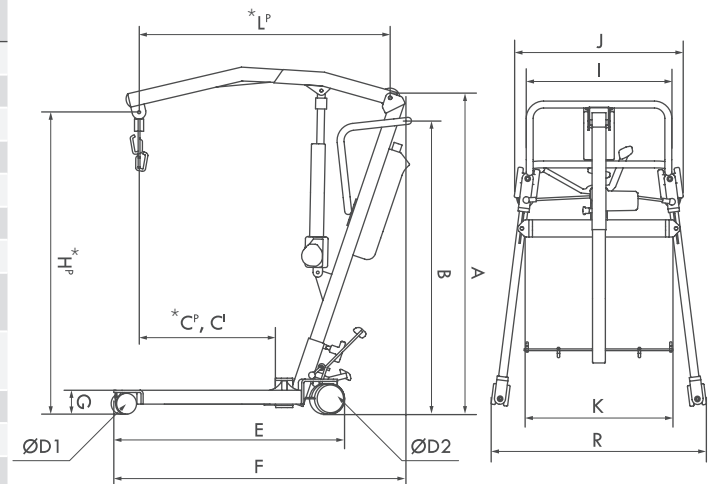
The modular design of the Mini hoist, but also the J160/190, makes it easy to convert the hoist into a stand aid.





MOBILE HOIST DIMENSIONS

A – device height	1170 mm / 46.0 inch
B – push handle height	1060 mm / 41.7 inch
*C ^P – range of operating depth	470 mm / 18.5 inch
*C ^I – range of operating depth	460 mm / 18.1 inch
E – base length	850 mm / 33.46 inch
F – device length	1170 mm / 46.0 inch
G – legs height	87 mm / 3.4 inch
*H ^P – lifting range	720 – 1860 mm / 28.3 – 73.2 inch
*H ^I – lifting range	905 – 1900 mm / 35.6 – 74.8 inch
I – push handle width	525 mm / 20.6 inch
J – device width	640 mm / 25.2 inch
K – inner working area width	530 mm / 20.8 inch
*L ^P – Boom length	940 mm / 37.0 inch
*L ^I – Boom length	950 mm / 37.4 inch
M – inner area of Boom for raising upright	500 mm / 19.6 inch
N – platform for upright positioning width	280 mm / 11.0 inch
O – platform for upright positioning depth	360 mm / 14.17 inch
P – shin support height	420 – 570 mm / 16.5 – 22.4 inch
R – legs spreading range (mechanical/electrical leg spreading)	920 / 1030 mm / 36.2 – 40.5 inch
Ø D1 – castor diameter, front	75 mm / 2.9 inch
Ø D2 – castor diameter, back	100 mm / 3.9 inch
Total weight without Boom	33,3 kg / 73.4 inch
Maximum load capacity	160 kg / 352.7 inch



ELECTRICAL DATA

Charger	Input: 230V 50Hz Output: 29,4V DC, 1A
Battery	24V DC
IP Protection: control box	IP66
IP Protection: actuator (upper/ bottom)	IP66/ IP66
IP Protection: manual control unit	IP66
Operating cycle	10% max 2min ON/ 18min OFF
Operating when loaded (lifting, lowering)	60 cycles in a full lifting range and a load of 80 kg
Average lifting / lowering time	38 s
Average leg spreading time	~2 s

*C^P, L^P, H^P - dimensions of the J160 Mini with Boom for lifting.

*C^I, L^I, H^I - dimensions of the J160 Mini with Boom for upright positioning.



Accessories



Flat spreader bar

APLC-01

A standard flat (four-point) spreader bar for the hoist enables the transfer of a disabled person in a sitting position. It can be used with any type of sling.



Side spreader bar

APLC-02

A side spreader bar (four-point) increases the comfort and flexibility of the lifted person, especially for obese people. It enables transfer in a sitting or semi-lying position. Can be used with any type of sling. Available in different sizes.



Eight-point spreader bar

APLC-03

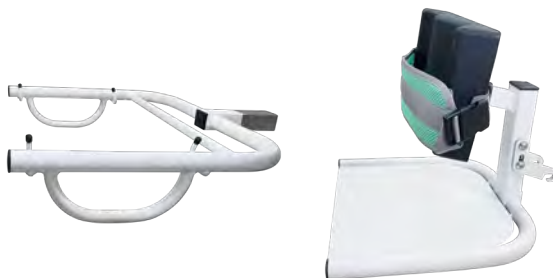
The eight-point spreader bar allows to lift the user in the supine position only. Requires a special eight-point sling for lifting in the lying position.



Battery LeviCare J160/J190/Compact (Battery Box)

BAT-4000-005

Extra battery, quick disassembly / assembly.



Boom and platform for upright positioning

APLC-13

The kit can be quickly fitted to a hoist in order to get the function of upright positioning of a person with a disability (to be fitted on the J160/190 or J160 Mini).



Battery charging station for LeviCare mobile hoist J160/J190/Compact

TBC2-2019-001

A docking station allows to charge the battery when disconnected from the hoist.



LeviCare scales

APLC-07

A device that weighs the user during lifting. Compatible with the Q140 hoist and any spreader bar.



LeviCare Mobile Hoist Compact

PJC

The LeviCare Compact is the newest mobile hoist. Similar in size to the J160 Mini, it is lighter in weight, has a reduced width, a wider legs spacing and a lithium-ion battery. The lithium-ion battery charges faster and has a longer service life.



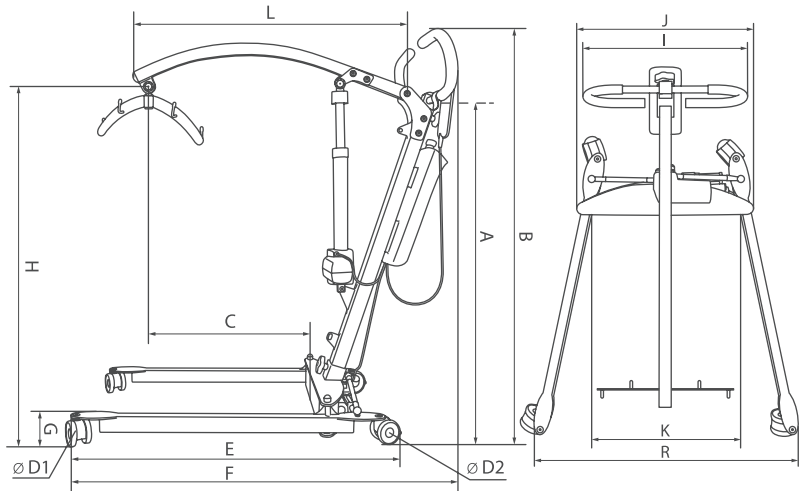
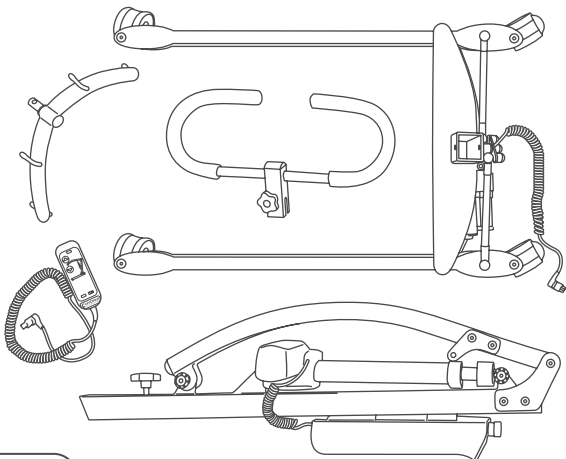
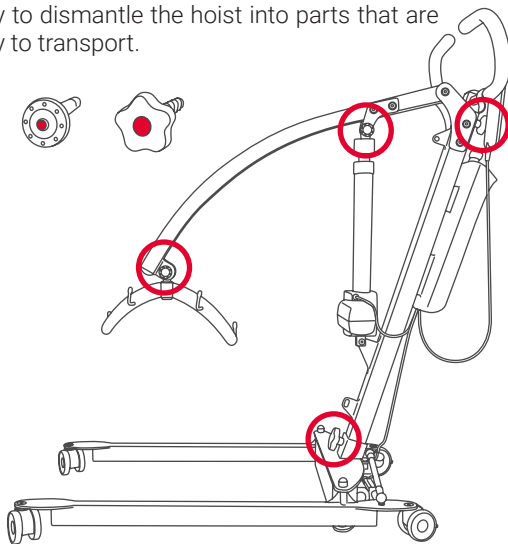
Comfortable handle for easy manoeuvring



Operated by remote control or panel on the control box



The use of mounting pins and knobs makes it easy to dismantle the hoist into parts that are easy to transport.



MOBILE HOIST DIMENSIONS

A – device height (without push handle)	1140 mm / 44.8 inch
B – device height (with push handle)	1280 mm / 50.4 inch
C – range of operating depth	270 – 560 mm / 10.6 – 22.0 inch
E – base length	960 mm / 37.8 inch
F – device length	1210 mm / 47.6 inch
G – legs height	86 mm / 3.4 inch
H – lifting range	600 – 1760 mm / 23.6 – 69.3 inch
I – push handle width	530 mm / 20.8 inch
J – device width	572 mm / 22.5 inch
K – inner working area width	480 mm / 18.9 inch
L – Boom length	910 mm / 35.8 inch
R – max legs spreading range	1020 mm / 40.1 inch
Ø D – castor diameter	75 mm / 2.9 inch
Total weight (without a spreader bar and a sling)	31 kg / 68.3 lbs
Maximum load capacity	120 kg / 264.5 lbs





CONTACT DETAILS:

TLC Medical Supply Inc.

Tel: 613-258-3344

**Email: inquires@tlcmedicalsupply.ca &
mario@tlcmedicalsupply.ca**