

snake 2815 compact



DESCRIPTION OF THE TECHNICAL FEATURES:

BASE FRAME

High-quality tubular steel and steel sheet framework, bolted to the truck chassis. The frame is equipped with four outriggers, the front two of which are mounted on hydraulically extending stabiliser-bearing arms with vertical descent enclosed end sections. Two enclosed vertical descent stabiliser are fitted on the rear. The frame is completed with a non-slip aluminium work platform with side access ladder and any optional features requested. The work platform's aluminium panelling continues over the two sides, to protect the machine's basic equipment. During transportation, these protective side panels also act as anti-intrusion bars.

ARM-BEARING TURRET

High-quality steel sheet mounted on the rotation thrust ball bearing with a worm screw system. The turret is rotated by a hydraulic motor coupled to a worm screw which engages with a crown incorporated into the frame.

STANDARD PANTOGRAPH UNIT

The system used to lift the work arm consists of two pairs of bars, both the same length, which are driven by a hydraulic jack at the base and a connecting rod transmission between the two pairs of bars. The combination of the same bar length and lever transmission between the two systems allows the operator's platform to perform vertical manoeuvres. This lifting feature means obstacles at work heights of over 11 m can be manoeuvred round.

OPERATOR'S ARM

Featuring hydraulic telescopic extension and chain transmission, the operator's arm is built of press-formed and welded high-yield strength steel sheet.

For increased protection, it houses the hydraulic extension cylinder and the trunking for the hydraulic lines running to the operator's platform.

OPERATOR'S PLATFORM

Built entirely of aluminium and fitted with two spacious side gateways to facilitate the operators' access. The gateways are protected with a drop-down safety bar.



OIL&STEEL SPA

Via Verdi 22
41018 San Cesario Sul Panaro
Modena - Italy

Soggetta a direzione e coordinamento
di PM Group spa società a socio unico
Registro imprese di Modena R.E.A. n. 282202
Tel. +39 059 936811 Fax +39 059 936413

CAP. SOC. i.v. 362.400,00 €
C.F./P.IVA 02313650364
www.oilsteel.com - info@oilsteel.com

OPERATOR'S PLATFORM LEVELLING

Implemented by a hydraulic pantograph system, the operator's platform contains two timed cylinders which can be reset manually in the horizontal condition.

CONTROLS

Equipment fitted with a fully hydraulic control and monitoring system. Stabilisation: via two hydraulic distributors located on the frame. The first RH distributor allows five manoeuvres, and can move the four outriggers and perform the RH outrigger extension. The other distributor, also located under the floor on the left-hand side (driver's side) has three levers for controlling the two LH outriggers and LH outrigger opening. Superstructure: built in duplicate for the two work posts and allows several manoeuvres to be performed at once:

- on the base frame, the operator can control the machine in emergency conditions using the distributor levers
- on the operator's platform, the operator can use the levers connected to the hydraulic distributor, in addition to the various enabling and alarm signal lights, the emergency stop button and the engine start button.

STANDARD SAFETY DEVICES

- Locks for safety belts on platform
- Anti-collision device that prevents the superstructure hitting the truck cab
- Arm lock when machine is not stabilised
- Stabiliser lock when machine is open
- Self-locking device on rotation unit
- Use and maintenance manual
- Momentum limiter
- Hand pump for emergency lowering
- Max. pressure valve on hydraulic circuit
- Thermal protection devices on electrical system
- Lock valves on all cylinders

ACCESSORIES FITTED AS STANDARD

- Truck engine start/stop control on both ground control post and platform control post
- Fasteners for safety belts
- Internal trunking (in arms)
- Light alloy rear-end floor cover
- Two-man platform, dim. 1700X700Xh1100 mm
- Two safety belts
- Hour meter (connected to power takeoffs) mounted on vehicle dashboard
- The aluminium bodywork is shaped to protect the devices fitted on it.
- Power take-off engaged buzzer
- Self-locking device activated on rotation
- Device (on truck dashboard) to signal outriggers not in resting position
- Outrigger/boom interlock
- Use and maintenance manual
- Hand pump for emergency lowering
- Document compartment on platform
- 220 V AC single-phase electric power socket on platform
- Priority of controls on platform



- Metal guard for ground control console.
- Thermal protection devices on electrical system
- Emergency button with engine stop
- Hydraulic platform rotation
- Yellow rotating lamp mounted on truck cab
- Power take-off engaged signal light (on truck dashboard)
- Overcentre lock valves on all cylinders
- Pressure relief valves on the hydraulic system

"SNAKE2815 COMPACT" TECHNICAL AND SALES INFORMATION SHEET

Max. working height	27.80 m
Max. working outreach	14.50 m
Operator's platform	Aluminium, dim.:1700x700xh1100
Maximum capacity	230 kg, including 2 people
Control type	Hydraulic:
Rotation range	360°, non-continuous
Platform rotation	90° R + 90° L
Stabilisation	n. 2 front H-shaped outriggers + 2 enclosed rear stabilisers
Minimum GVW	6.00 tons

DIMENSIONS WITH MACHINE MOUNTED ON A MITSUBISHI CANTER 6 TON 3350 WHEELBASE TRUCK

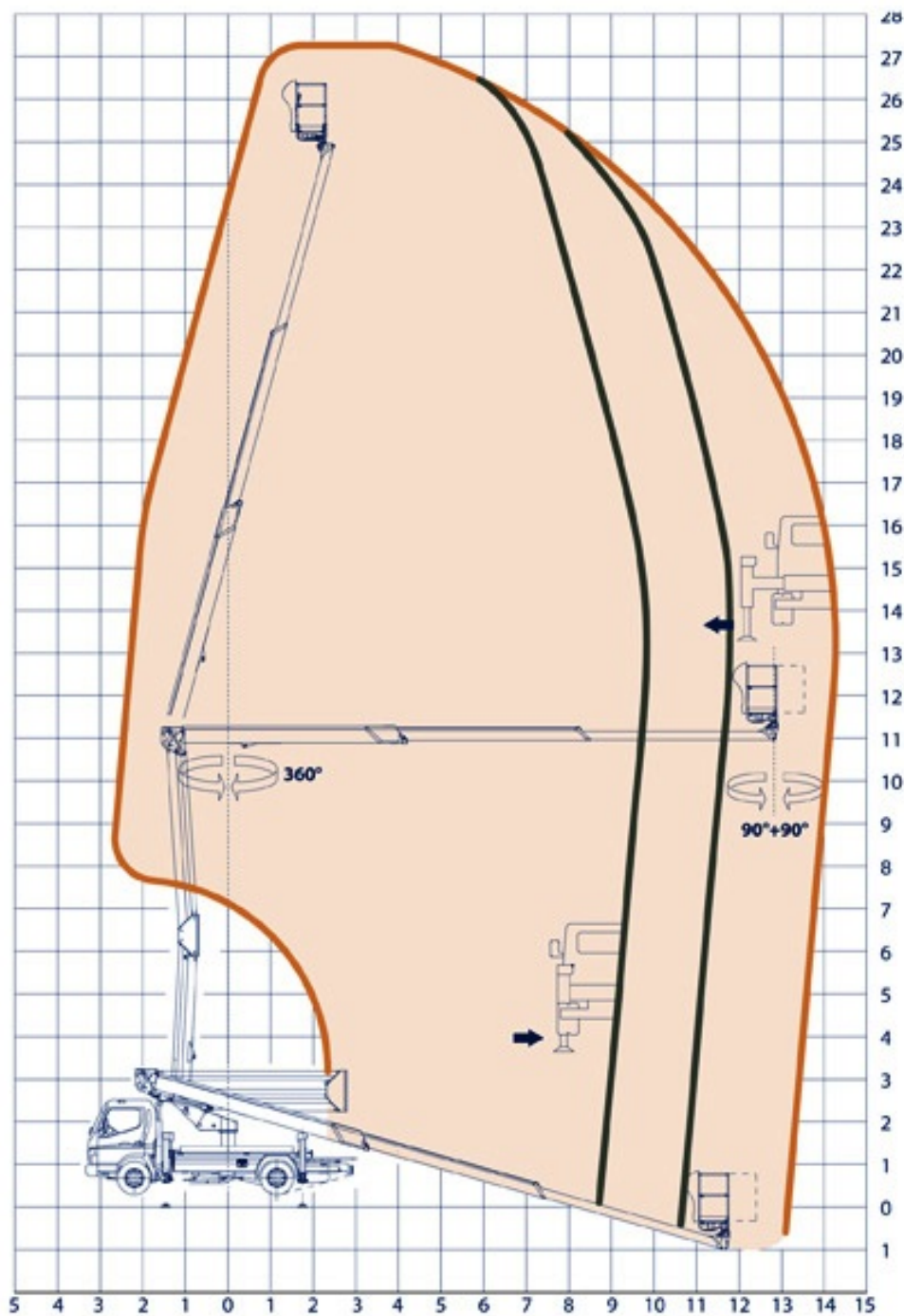
Machine length	6900 mm
Machine width	2200 mm
Machine height	2920 mm

OPTIONALS AVAILABLE ON REQUEST

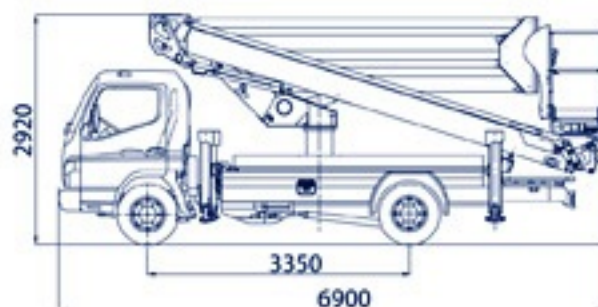
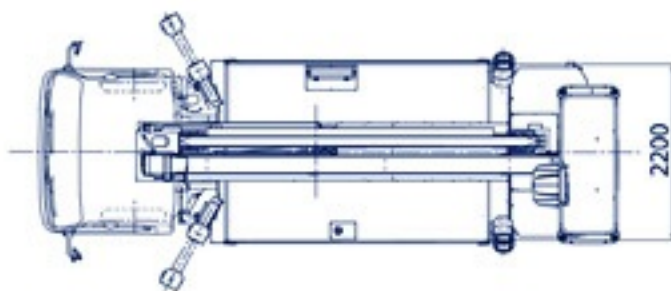
12 V AC single-phase electric power socket on platform
 60W spotlight on platform powered by batteries including 12 V outlet
 Anemometer – wind gauge
 Custom stickers on boom (customer logo-send .jpg file)
 Drop-leaf side panels on 1 side (RH) h 200mm
 Electric pump for emergency lowering
 Heat exchanger
 Extra paintwork for truck cab
 Non-standard paintwork (RAL 9016 white)
 Non-standard paintwork for cold climate (RAL 9016 white)
 Paintwork for cold climate (RAL 9016 white)
 Fibreglass platform instead of standard version, dim. 700 x 1400 x h 1100mm
 Fibreglass platform instead of standard version, dim. 700 x 1400 x h 1100mm with 1000 V insulated
 Yellow rotating lamp with magnetic fixture
 Junction protection
 Port traffic cones
 Platform waxing for sea transport



OPERATING AREA AND GEOMETRICAL FIGURES



230 kg



OIL&STEEL SPA

Via Verdi 22
41018 San Cesario Sul Panaro
Modena - Italy

Soggetta a direzione e coordinamento
di PM Group spa società a socio unico
Registro imprese di Modena R.E.A. n. 282202
Tel. +39 059 936811 Fax +39 059 936413

CAP. SOC. i.v. 362.400,00 €
C.F./P.IVA 02313650364

www.oilsteel.com - info@oilsteel.com