



Breiwark 2027

Kreatiewe gilet

Voorkoms: 50% · Werksgehalte: 50%



Vereistes

- 'n Heuplengte, moulose kreatiewe gilet.
- Kreatief beteken hier om 'n gilet skeppend te brei wat nuut en innoverend is.
- Artikel mag nie ouer as twee jaar wees nie.
- Enige garingdikte vesels, patroonsteke en kombinasies van patroonsteke asook verskillende kleurvariasies kan gebruik word.

Wenke

- Daar kan splete in die synate wees en as die gilet se voor- en agterpante slegs op die skouers heg, is een of ander geskikte vasmaker langs die sye nodig.
- 'n Gilet word altyd oor 'n ander kledingstuk gedra daarom moet die halslyn nie te hoog wees nie. Maak gebruik van enige geskikte vorm halslyn.
- Waak teen te veel verskillende effekte wat 'n te deurmekaar indruk kan skep.
- Spanning gaan belangrik wees aangesien daar met verskillende diktes garing, vesels en patroonsteke gebrei gaan word.
- Beplan en toets eers elke tipe sorgvuldig sodat die artikel 'n netjiese spanning sal behou.
- Tooisels en borduurwerk is binne perke toelaatbaar en mag nie die breiwark oorheers nie.
- Kreatief sluit in onder andere – strepe, crazy patchwork ensovoorts.

Aanbieding

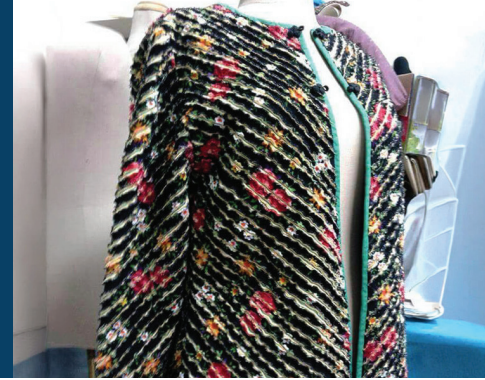
- In 'n deursigtige plastieksak en as volg gemerk: BREIWERK, jou naam, tak, area en provinsie.
- Heg kaartjie aan die artikel met 'n hekeldraad.
- Geen hakspelde asb.



Knitwear 2027

Creative gilet

Appearance: 50% · Quality of work: 50%



Requirements

- A hip length, sleeveless creatively knitted gilet.
- 'Creative' in this instance means a gilet knitted in new
- Article may not be older than and innovative ways. two years.
- Yarn of any thickness and fibre, pattern stitches or any combination of pattern stitches as well as colour combinations can be used.

Tips

- There can be slits in the side seams and if the front and back parts are only joined on the shoulders, a suitable fastener will be needed on the sides.
- As gilets are always worn over another garment, the neckline must not be too high. It can have suitable form of neckline.
- Guard against the use of too many different effects that may result in creating a confusing muddled up appearance.
- Tension will be important as yarns of different thickness and textures are used together with different pattern stitches.
- Plan and test every stitch carefully so that a neat and even tension can be maintained.
- Accessories and embroidery can be used sparingly but may not dominate the knitting.
- 'Creative' includes amongst others - stripes, crazy patch work etc.

Tips

- In a clear plastic bag marked as follows: KNITWEAR: your name, branch, area and province.
- Attached the card to the article with a crochet thread.
- Please do not use safety pins.