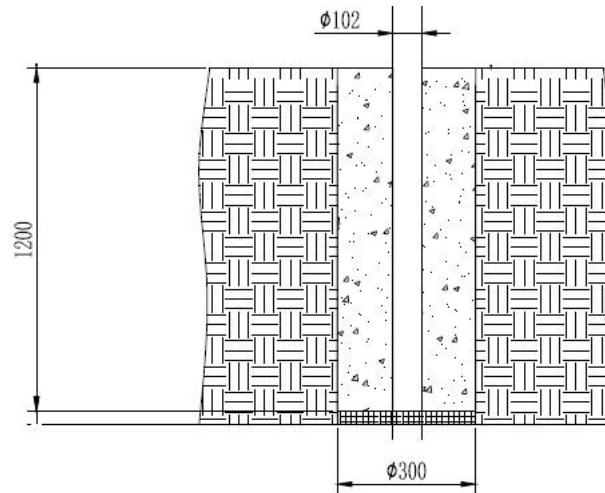


## Pole Mount PM4 install guide.

### Installing post.



Post should be installed in a hole at a minimum of 1200mm x 300mm. If depth cannot be reached, hole should be widened to accommodate additional cement. Pole so have at least 1250mm above the surface with a recommendation of 1300-1400mm. Orientation is not important and pole should be bolt end down.

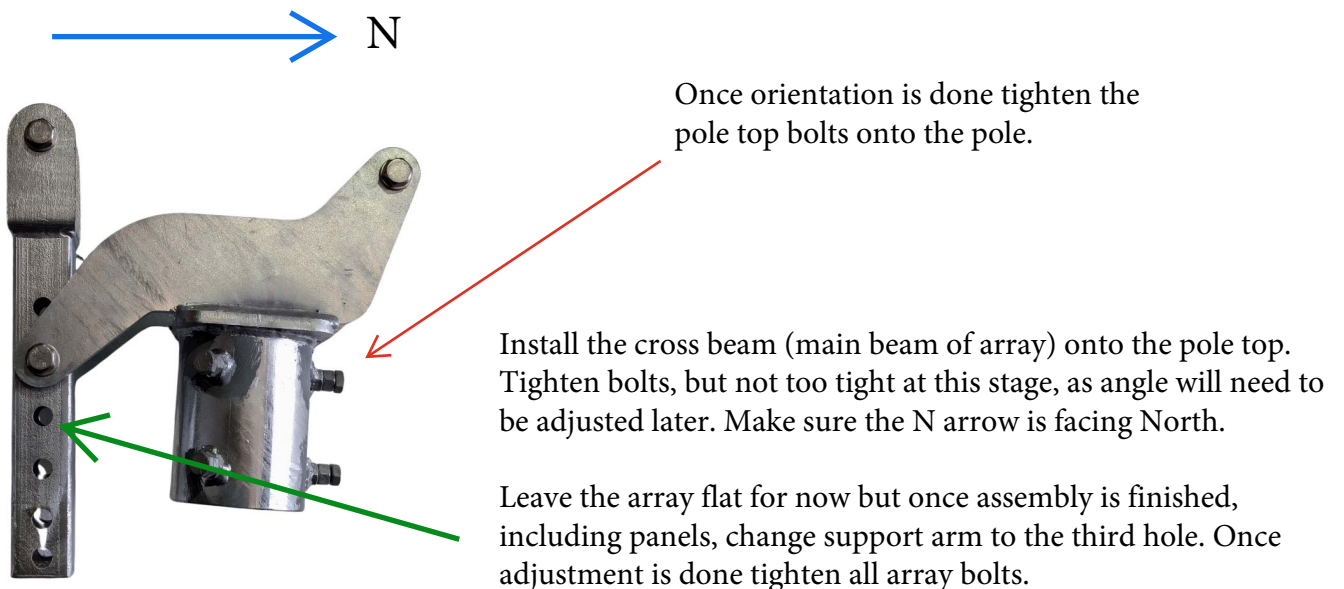
A spirit level should be used to make sure pole is straight during installation.

**\*In medium to hard ground a 4-panel system should be a minimum of 8-9 bags of rapid set. In softer ground hole should be 1300mm x 325mm and be 9-10 bags of rapid set.**

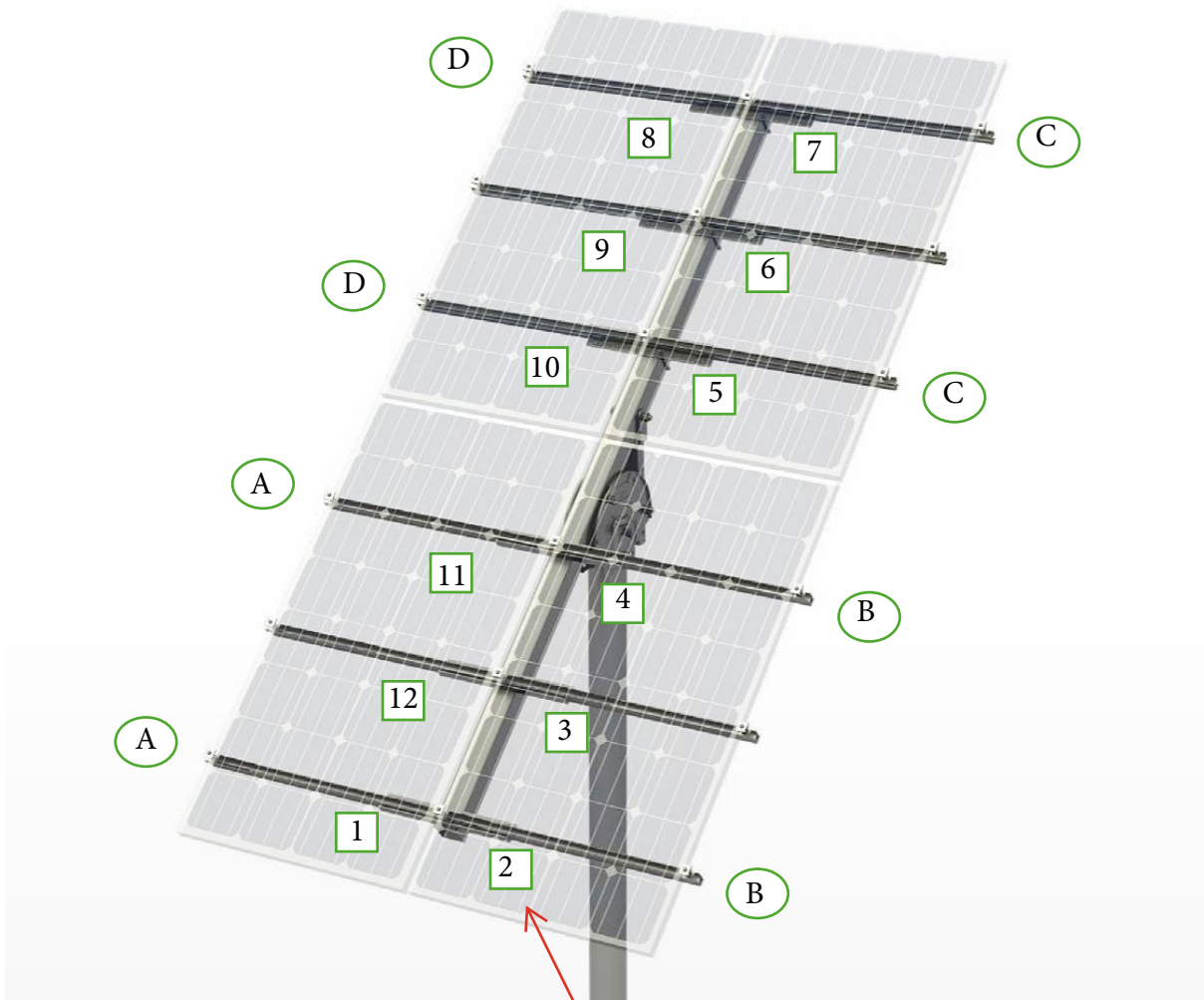
**\*\*If site is very sandy soft ground please contact Solar Water Pumps for an installation recommendation.**

### Pole top and cross beam.

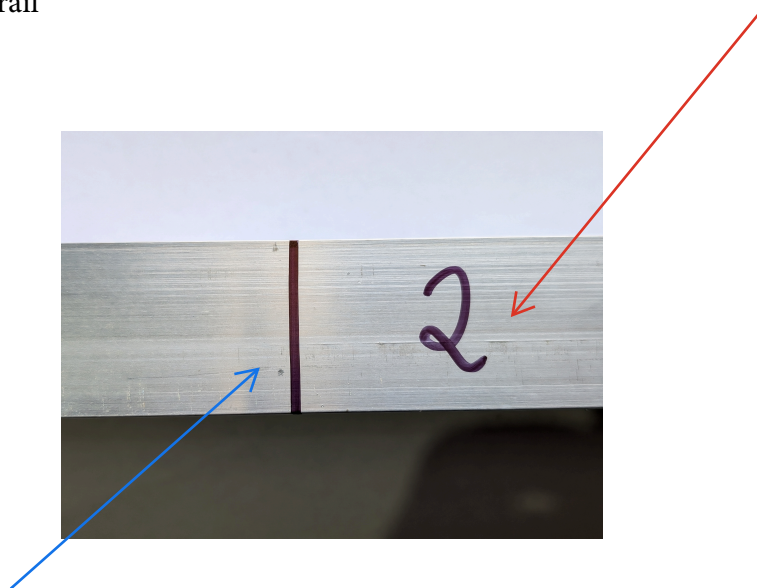
Once rapid set has dried to manufactures specification you can install the pole top and cross beam. Pole top is installed with the adjustable arm on the South side of the array with the open-end facing North.



## Array numbering and lettering



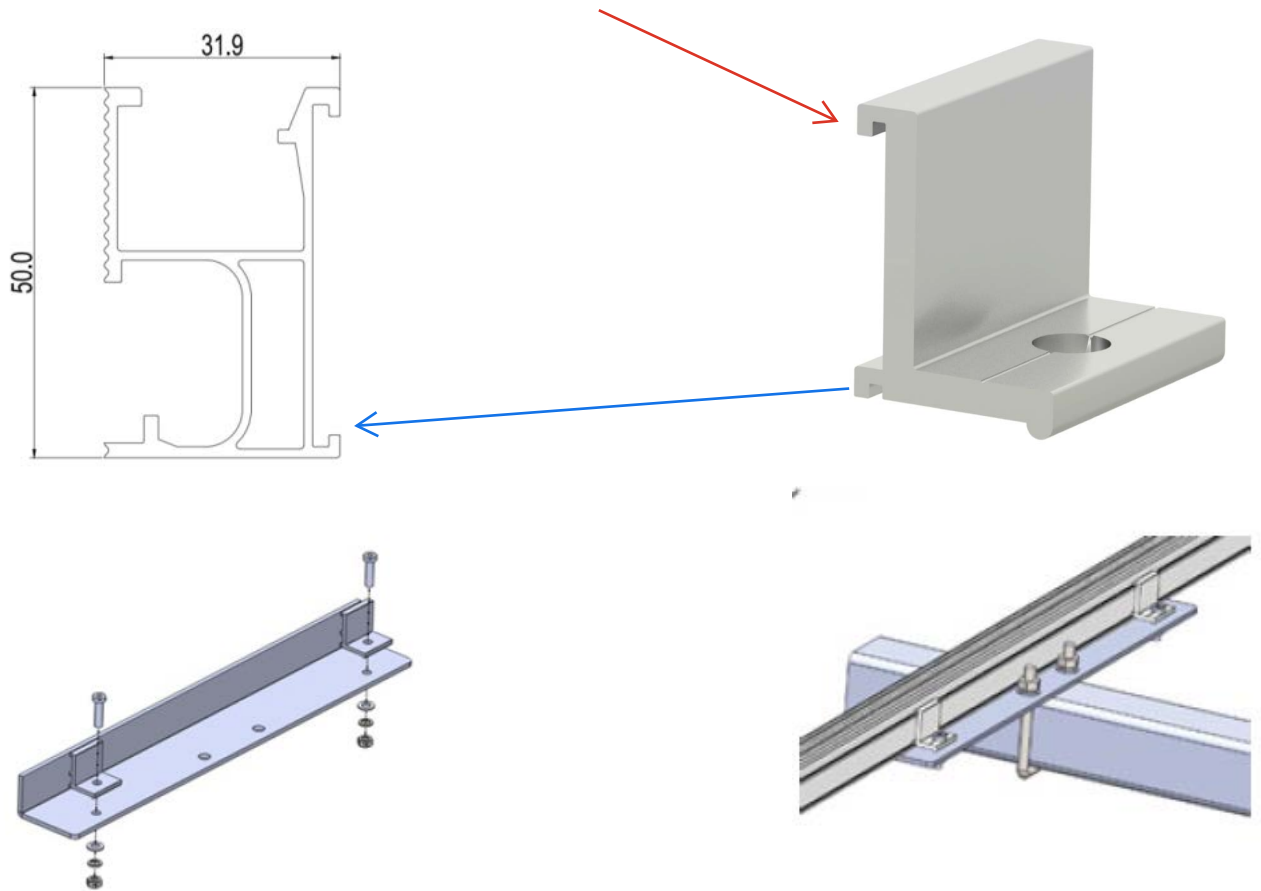
Brackets (Lintels) will be numbered sequentially, match up with corresponding numbers on the rail



Line up edge of bracket with line marked on underside of the rail.

Attach rail to bracket with the cross connector clamps. Bottom teeth of the clamp will attach to the bottom fixing point on the rail. Once marks are lined up tighten clamps securely.

\*please note top point of the clamp does not attach.



## Panel installation

Line up first panel A with white marks on panel lining up with black marks on rail.

All letters should be facing away from the pole (outwards) on the array.

Attach outer clamps. Clamps will click into place as per image on the next page. Panel should sit on the S/S earthing bracket. Tighten clamp until it holds the panel, don't tighten too much as some adjustment may be required.

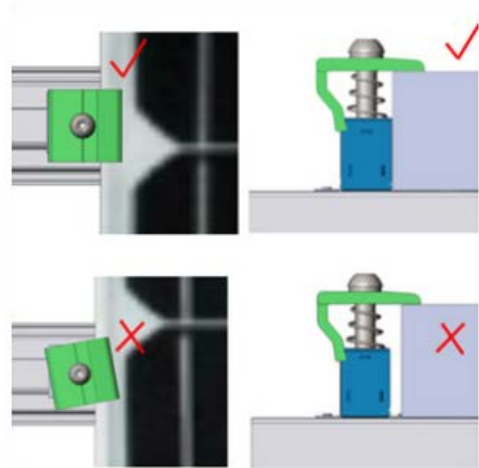
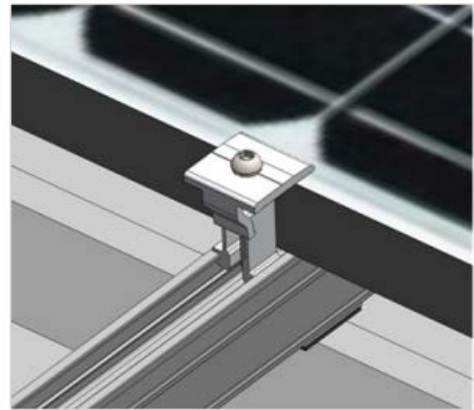
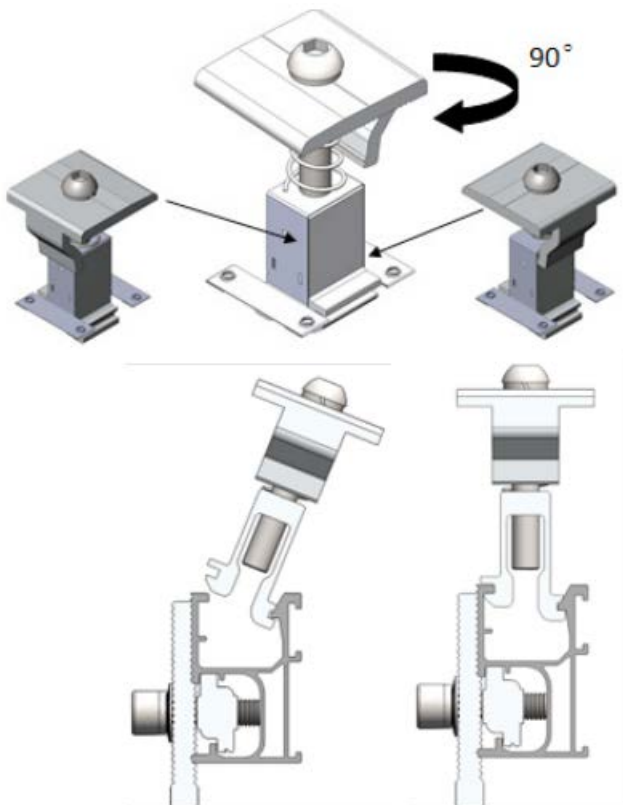
Install clamps to other side of panel (middle of array). Panel B can the be lined up and installed as per panel A.

Repeat the process with panels C&D. As a rule of thumb there should be around 20mm between top and bottom panels.

**\*Please note, panel positioning may need to be slightly adjusted as rail does flex and main cross bar may twist which can put the markings out by a few mm. Panels should be adjusted to have the bottom/top and side edges lining up to the eye, and pushed up tight against all clamps.**

Once panels are correctly in position tighten all clamps onto the panels. The recommended torque is 14-16NM for the end clamps and 16-18NM for middle clamps. If the clamp begins to twist your are likely over tightening.

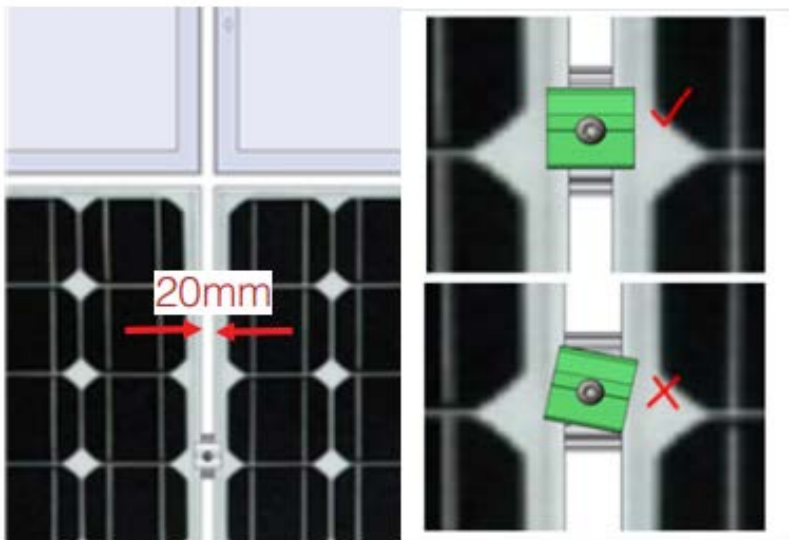
## Universal Clamp installation.



Click clamp in as shown in image.

Orientate top of clamp to suit end or middle clamping position.

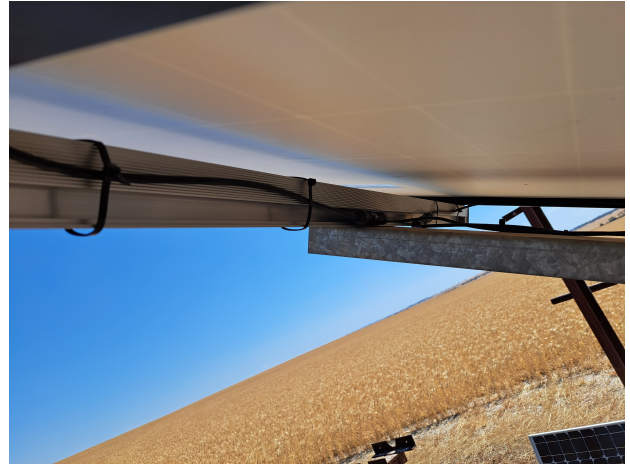
*\*Image for illustration purposes only as rail and connecting clamp set up show a roof mount.*



Once all clamps are secure you can begin to wire up the array.

You will have been provided with enough cable ties to secure the cables neat underneath the panels. There is no set way to do this but cables should not be bent, stretched or be too tight. Attach them to either the aluminium or galvanised sections of the frame.

\*images are for illustration purposes only and your array may differ from the ones shown.



Your array should now be complete and you are ready to adjust the angle and finish tightening.