



Class III Limestone

## Cortona

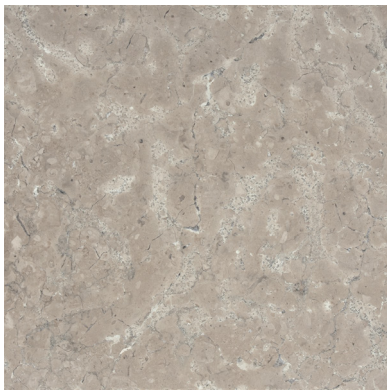
### Available Finishes



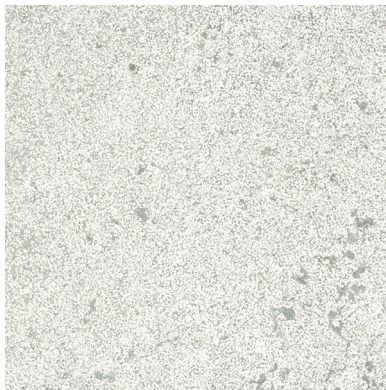
Brushed



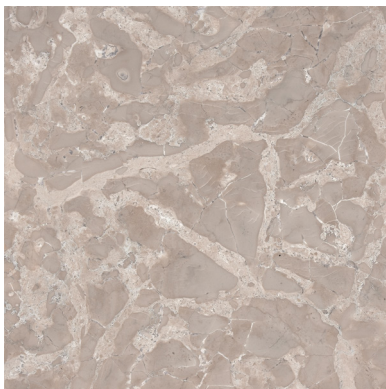
Bush Hammered



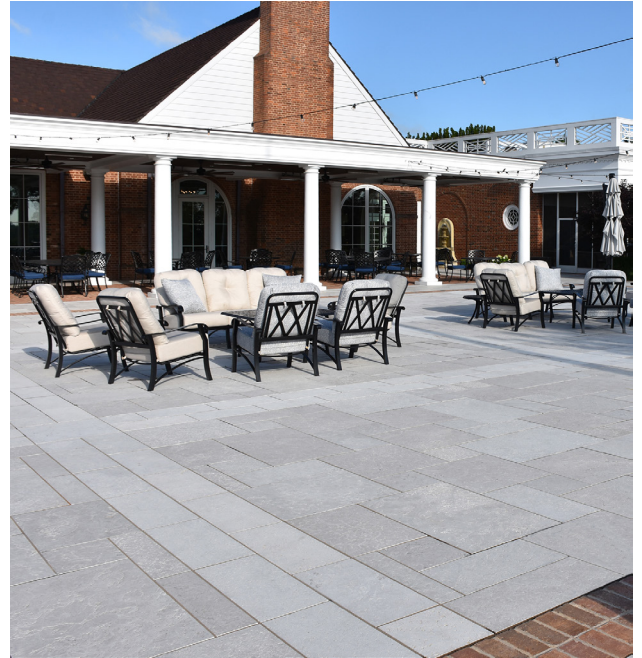
Honed



Machine Sandblasted



Polished



### Description

**Cortona** is a marble-like limestone featuring a sophisticated blend of taupe, cream, and light gray marbling. Its elegant coloration complements a wide range of design palettes. This unique stone offers versatility in color and texture through various finishes. With its combination of beauty and adaptability, **Cortona** is well-suited to elevate any architectural project.

### Physical Test Results

Absorption by Weight	0.25%
Compressive Strength	16,610 PSI
Modules of Rupture	1,790 PSI
Flexural Strength	1,450 PSI
Density	168 lb/ft <sup>3</sup>

### Applications

Residential	Commerical
Interior	Exterior
Horizontal	Vertical

Printed reproductions are provided for reference only and may not accurately represent natural stone colors or characteristics.