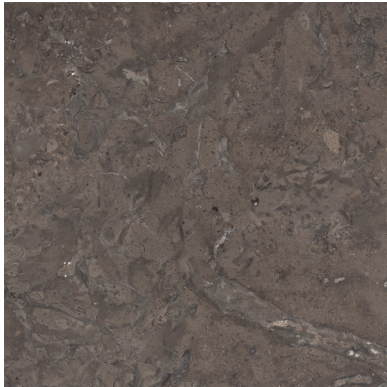




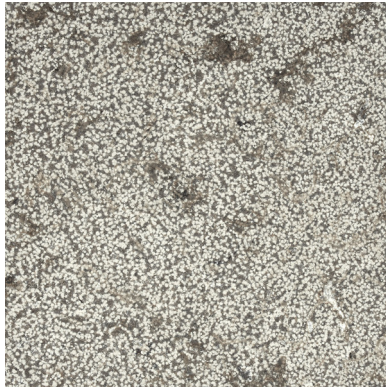
○ Class III Limestone

Sierra Umber

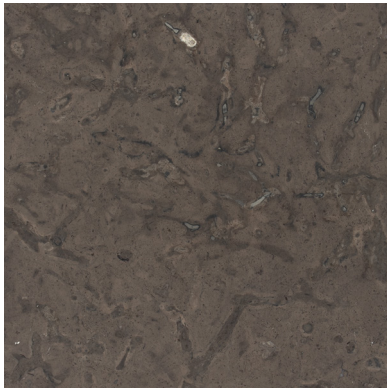
Available Finishes



Brushed



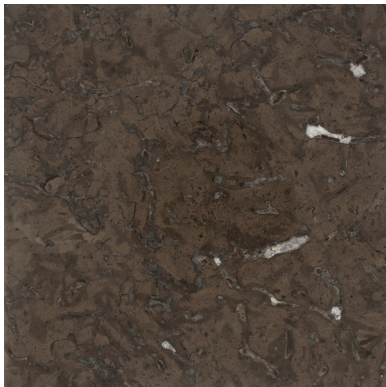
Bush Hammered



Honed



Machine Sandblasted



Polished



Description

Rich chocolate-gray tones and classic marble veining give **Sierra Umber** a distinctive, upscale appearance. Known for its high density and low absorption rate, this versatile stone performs as beautifully as it looks. Available in a range of nishes, it offers striking variations in both color and texture to suit any design vision.

Physical Test Results

Absorption	0.08%
Specific Gravity	2.7
Density	168.6 lb/ft ³
Compressive Strength	16,548 PSI
Modules of Rupture	1,852 PSI
Flexural Strength	1,411 PSI
Coefficient of Friction	30.7

Applications

Residential	Commerical
Interior	Exterior
Horizontal	Vertical

Printed reproductions are provided for reference only and may not accurately represent natural stone colors or characteristics.