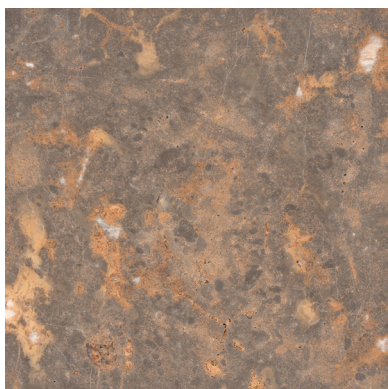




Class III Limestone

Aurelia

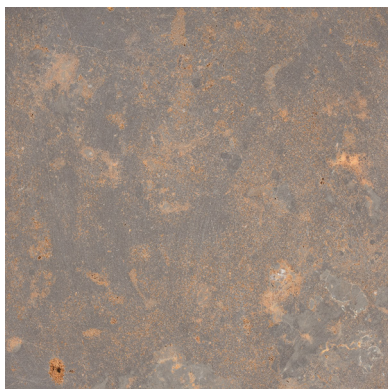
Available Finishes



Brushed



Bush Hammered



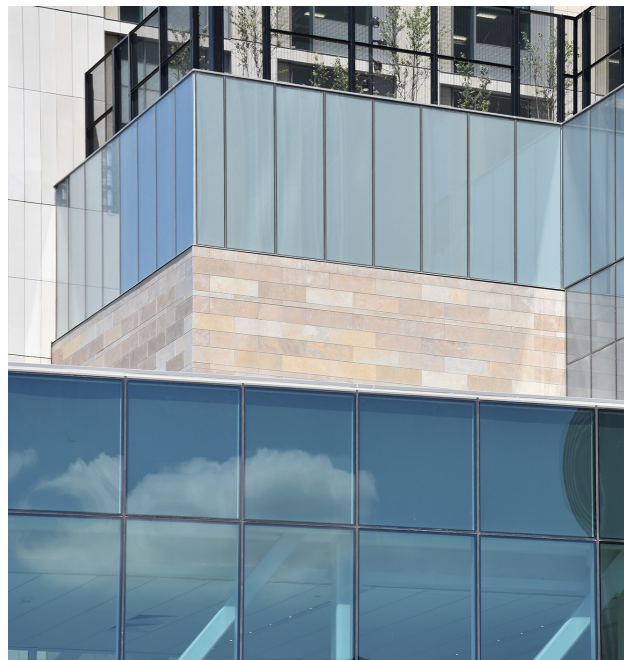
Honed



Machine Sandblasted



Polished



Description

With its warm blend of gold and cream tones, **Aurelia** is a distinctive limestone that adds timeless character to any space. Celebrated for its natural beauty and strength, this elegant stone is a favorite in both residential and commercial designs. Its durability and reneled color make it a versatile and enduring choice for projects of all kinds.

Physical Test Results

Absorption	1.20%
Bulk Specific Gravity	2.7
Weight	167.0 lb/ft ³
Compressive Strength	22,200 PSI
Modulus of Rupture	1,940 PSI
Flexural Strength	1,782 PSI
SRI Value	47

Applications

Residential	Commerical
Interior	Exterior
Horizontal	Vertical

Printed reproductions are provided for reference only and may not accurately represent natural stone colors or characteristics.