

DATA SERIES ICON DATA VINYL

RECOMMENDED APPLICATIONS



DATA CENTRES SERVER ROOMS

SYSTEM NAME

Icon Data Vinyl Heavy Grade 1000LBS (4.5kN)

DESCRIPTION

Icon Data Vinyl is a finished system designed for Computer and Data Centre environments. It can be used for mapping and distributing cabling, data and other electrical services in the sub-floor.

The Icon Data Vinyl system has a Dissipative Anti-static 0.08in Vinyl surface finish. The Vinyl protects against voltage shorts that can occur with electrical equipment and creates an electrostatic discharge to help prevent buildup of the static electricity which could damage equipment.

COMPLIANT STANDARDS

CISCA 2007
ISO9239-1-2003
EN12825-2001
DIN4102-1-1998

CORE Cementitious Compound

FINISH Gerflor Mipolam Robust EL7 Dissipative Anti-static 2mm Vinyl surface finish.

CONSTRUCTION

The panels consist of a hardened steel top and bottom sheet plate with corrosion resistant protection, inside and out, encapsulating a structural cementitious core.

TOLERANCE

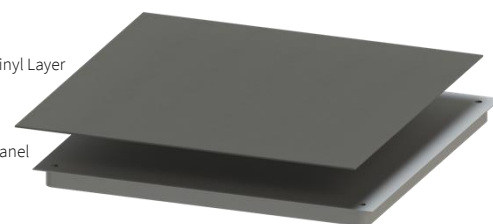
±0.001in and a flatness tolerance of ±0.02in measured on a diagonal across the top of the panel

CONNECTION

The panel is gravity held on top of the stringer assembly.

SIZE 24in x 24in

DEPTH 1.4in



PERFORMANCE TO STANDARDS GUIDE PER CISCA STANDARD 2007

Load Level	Panel (kg)	System (kg/m ² at 17.7in FFH)
1000LBS (4.5kN) Heavy Grade	14.5	48.1
STATIC PERFORMANCE (kN)		
Concentrated	Impact	Ultimate
1000LBS (4.5kN)	150LBS (68.4kg)	6500LBS (28.91kN)
DYNAMIC PERFORMANCE (kN) - Passes		
10 passes (wheel size 3in x 1.2in)	10,000 passes (wheel size 6in x 2in)	Uniform (kN/m ²)
800LBS 6 (3.6kN)	670LBS (3.0kN)	23.3
Safety Factor: Panels must provide a minimum safety factor of five (5) times the uniform load specified above in accordance with CISCA Standard ICC-ES.		



PEDESTAL SIZE

4in x 4in base plate

PEDESTAL CONSTRUCTION

Hot dipped galvanised steel pedestal base, head and rod. Finished with an ABS locating gasket.

PEDESTAL LOCKING

The pedestals will be provided with an adjusting and locking nut to maintain the assembly at a selected height, which requires a deliberate action to change the height setting, and which prevents vibration displacement.

PEDESTAL FINISH

Hot dipped galvanized finish.

PEDESTAL CONNECTION

The panel is gravity held on top of the stringer assembly.

PEDESTAL FINISHED FLOOR HEIGHT (FFH)

The finished floor height of the access floor is measured from the sub floor to the top surface of the installed access floor.

STRINGER SIZE

1.2in x 0.08in x 0.05in x 24in

STRINGER CONSTRUCTION

Rectangular steel welded tube with 0.06in sponge rubber foam.

STRINGER FINISH

Hot dipped galvanized finish.

STRINGER CONNECTION

The stringer is screw fixed to the pedestal head.

ICON Data Vinyl Colour Hub



PLATINUM (0002)



IVORY (0003)



CLAY (0004)



STEEL (0005)



HONEY (0006)



PEWTER (0013)



WHITE (0103)



STORM (0112)



GREEN (0306)

*Colours are subject to availability and minimum order quantities may apply.