

# MODULEFORM

## SKI CHALET



# MODULEFORM

## Building specification:

Dimension (LxWxH): 920x430x400 cm

Surface: 39,55 m<sup>2</sup>

Usable area: 35,10 m<sup>2</sup>

## Functional layout:

Living room

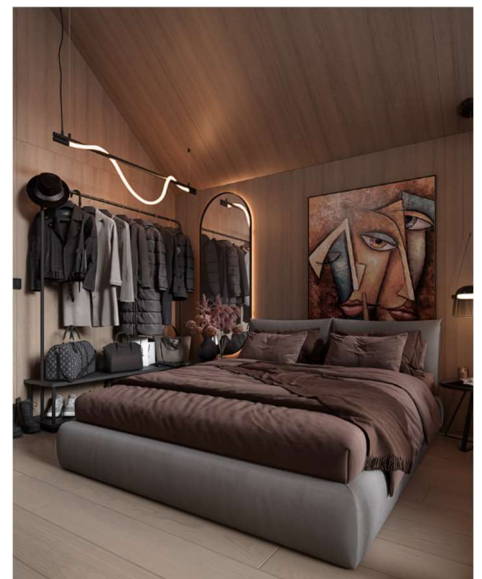
Kitchen

Bedroom

Bathroom

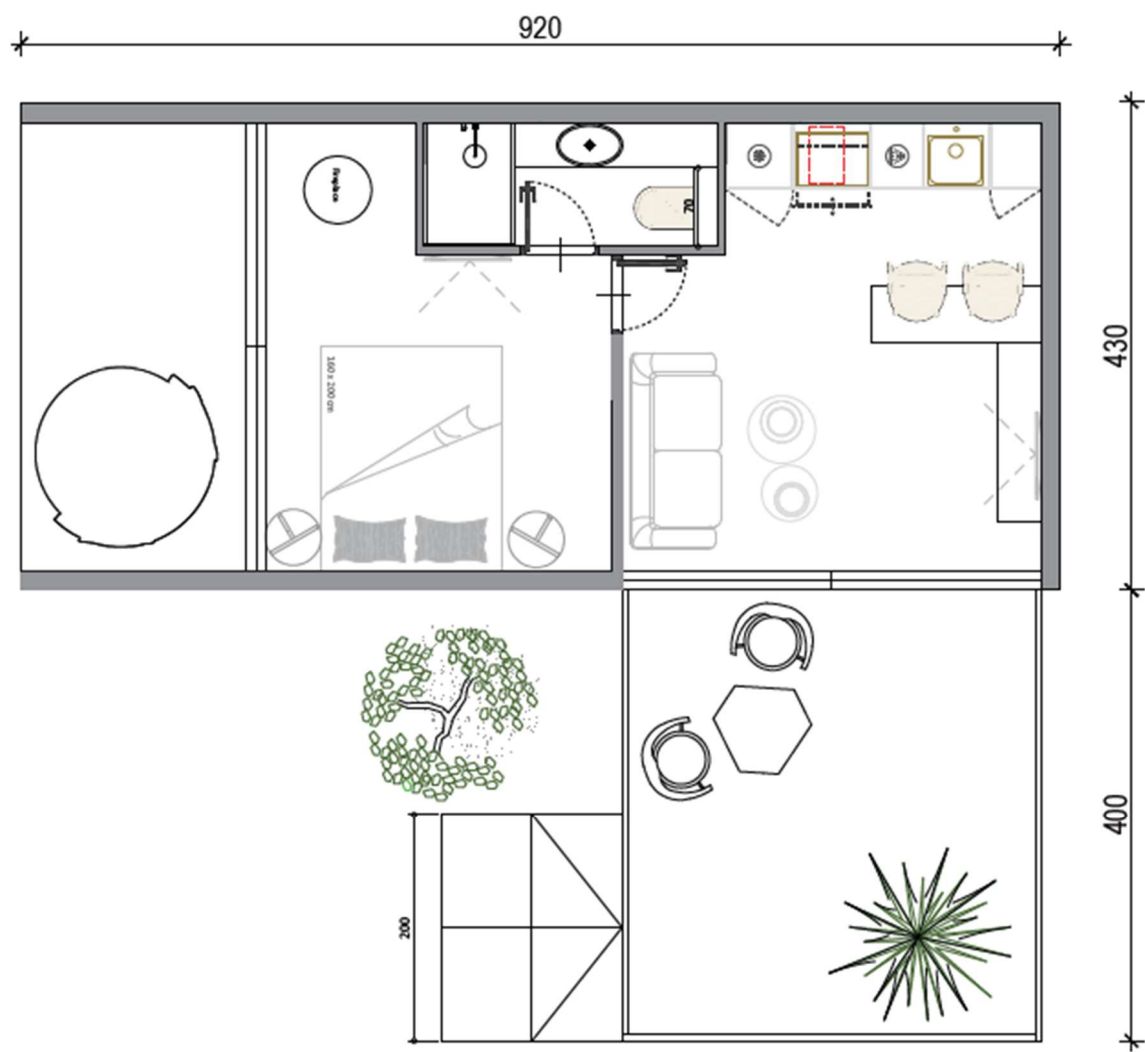
Terrace: 370x400 cm

EXTERIOR	Construction	Steel construction, aluminum substructure
	Facade	Ventilated facade system covered with HPL exterior panels
	Roof	Solid roof panels covered with HPL exterior panels
	Thermal insulation	Natural cellulose 0.038 W /mK
	Glass openings	Aluminum profiles with thermal block $U_w \leq 1,0$ W/m <sup>2</sup> K
INTERIOR	Terrace	Covered terrace with sliding doors
	Walls	Wooden boards
	Ceilings	Wooden boards
	Floors	LVT flooring
	Furniture	Fully equipped, ready to move in
INSTALLATIONS	Bathroom	Fully equipped
	Electrical installation	Modular type light switches, complete with mounting box, bracket and frame.
	Water and sewage installation	With automatic fuses and FID switch. Light switches, sockets and lighting.
	Ventilation system	Natural air recovery; Air conditioner
	Heating system	Electric floor heating with thermostat

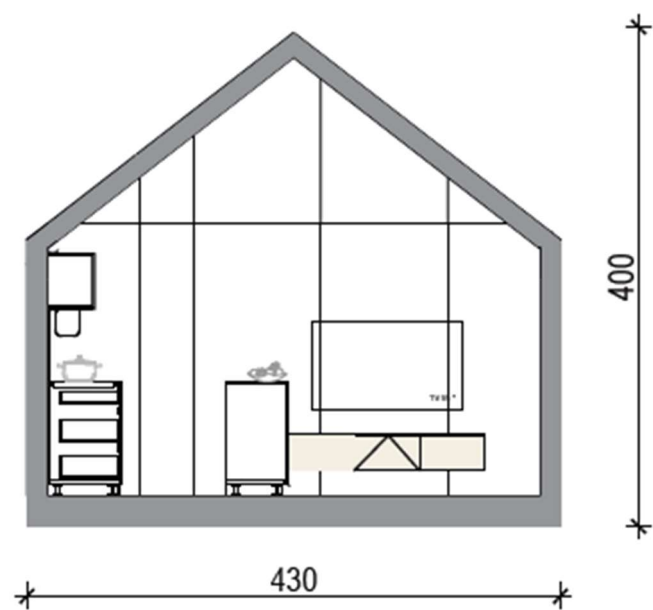


# MODULEFORM

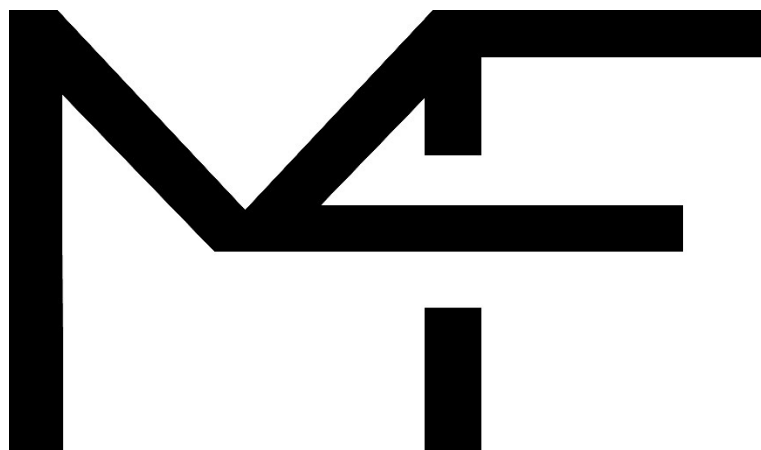
Layout:



Section:



# MODULEFORM



## CUSTOM MODULAR BUILDINGS

### Contact:

[module@moduleform.com](mailto:module@moduleform.com)

+385 49 342 439

Lepajci 5

49000 Krapina

Croatia

The contents of this conceptual design and its attachments is privileged and intended only for the use of the individual or entity to whom it is addressed. It may contain confidential or legally privileged information. If you have received it by mistake, please notify us immediately by email reply and delete it from your system. If you are not the intended recipient you are notified that disclosing, copying, distributing or taking action in reliance on the contents of this communication is strictly prohibited and may be unlawful. We reserve copyright to this material. Copying both in whole and in part is forbidden without written permission from MODULEFORM.