



DRY AGED

Beef





What is Dry Aging?

Dry aging is the process when you take a piece of meat (preferably bone in) and put it into a controlled open-air environment to go through a flavor transformation. By exposing the meat to air, moisture is pulled out and the natural enzymes in the meat break the muscles down slowly over time, resulting in a more tender texture and intense flavor profile.

When beef is dry-aged, there are three basic changes that occur to its structure:

- **Moisture loss** is a major factor. A dry aged piece of beef can lose up to around 30 percent of its initial volume in water loss, which concentrates its flavor. A great deal of this moisture loss occurs in the outer layers of the meat, some of which get so desiccated that they must be trimmed before cooking. Thus the larger the piece of meat you start with (and the lower the surface area to volume ratio), the better your yield will be.
- **Tenderization** occurs when enzymes naturally present in the meat act to break down some of the tougher muscle fibers and connective tissues. A well aged steak should be noticeably more tender than a fresh steak.
- **Flavor change** is caused by numerous processes, including enzymatic and bacterial action. Properly dry-aged meat will develop deeply beefy, nutty, and almost cheese-like aromas.

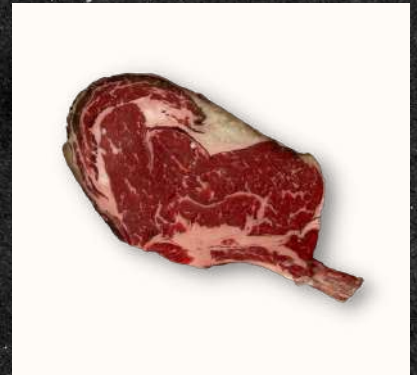


DRY-AGED STRIP STEAKS

ITEM #	DESCRIPTION	PACK SIZE
008013	BEEF STRIPLOIN BONE IN D/AGE ANGUS	10/16 OZ
007789	BEEF STRIPLOIN BONE IN D/AGE ANGUS	9/18 OZ
007794	BEEF STRIPLOIN BONE IN D/AGE ANGUS	8/20 OZ
017912	BEEF STRIPLOIN BONE IN D/AGE PRIME	10/16-18 OZ
910127	BEEF STRIPLOIN BONE IN D/AGE PRIME	8/20 OZ
007888	BEEF STRIPLOIN PUB D/AGE ANGUS	30/5 OZ
008016	BEEF STRIPLOIN BONELESS D/AGE CHOICE	16/10 OZ
009456	BEEF STRIPLOIN BONELESS D/AGE ANGUS	14/12 OZ
008012	BEEF STRIPLOIN BONELESS D/AGE ANGUS	12/14 OZ
871571	BEEF STRIPLOIN BONELESS D/AGE ANGUS	10/16 OZ
009459	BEEF STRIPLOIN BONELESS D/AGE ANGUS	8/20 OZ
820516	BEEF STRIPLOIN BONELESS D/AGE PRIME	16/10 OZ
820519	BEEF STRIPLOIN BONELESS D/AGE PRIME	12/14 OZ
820515	BEEF STRIPLOIN BONELESS D/AGE PRIME	10/16 OZ
400103	BEEF STRIPLOIN BONELESS D/AGE PRIME	8/20 OZ

DRY-AGED RIBEYE STEAKS

ITEM #	DESCRIPTION	PACK SIZE
871622	BEEF RIBEYE STEAK BONE/IN D/AGE ANGUS	10/18 OZ
871630	BEEF RIBEYE STEAK BONE/IN D/AGE ANGUS	8/20 OZ
871645	BEEF RIBEYE STEAK BONE/IN D/AGE PRIME	6/30 OZ
961063	BEEF RIBEYE STEAK BONELESS D/AGE PRIME	10/18 OZ
871676	BEEF RIBEYE STEAK COWBOY D/AGE ANGUS	10/16-18 OZ
871674	BEEF RIBEYE STEAK COWBOY D/AGE ANGUS	8/20 OZ
871738	BEEF RIBEYE STEAK COWBOY D/AGE ANGUS	4/40 OZ
871668	BEEF RIBEYE STEAK COWBOY D/AGE PRIME	8/16-18 OZ
871669	BEEF RIBEYE STEAK COWBOY D/AGE PRIME	8/20 OZ
780119	BEEF RIBEYE STEAK TOMAHAWK FRENCHED LONG BONE D/AGE	7/24 OZ
780186	BEEF RIBEYESTEAK TOMAHAWK FRENCHED LONG BONE D/AGE	6/27-29 OZ
780189	BEEF RIBEYE STEAK TOMAHAWK FRENCHED LONG BONE D/AGE	4/48 OZ
222103	BEEF RIBEYE STEAK TOMAHAWK FRENCHED D/AGE PRIME	6/28 OZ
022103	BEEF RIBEYE STEAK TOMAHAWK FRENCHED D/AGE WAGYU	1/10-12 OZ



DRY-AGED T-BONE & PORTERHOUSE

ITEM#	DESCRIPTION	PACK SIZE
871707	BEEF T-BONE STEAK D/AGE ANGUS	7/20 OZ
871696	BEEF PORTERHOUSE STEAK D/AGE ANGUS	8/20 OZ
871697	BEEF PORTERHOUSE STEAK D/AGE ANGUS	8/22 OZ
009864	BEEF PORTERHOUSE STEAK D/AGE ANGUS	7/24 OZ
871686	BEEF PORTERHOUSE STEAK D/AGE ANGUS	5/38 OZ
871701	BEEF PORTERHOUSE STEAK D/AGE PRIME	4/42 OZ

DRY-AGED PRIMALS

ITEM#	DESCRIPTION	PACK SIZE
001790	BEEF STRIPLOIN 1X1 D/AGE CHOICE	1/10 LBA
091042	BEEF STRIPLOIN 179 D/AGE CHOICE	1/22 LBA
090933	BEEF STRIPLOIN 0X1 D/AGE PRIME	1/12 LBA
090958	BEEF STRIPLOIN 179 D/AGE PRIME	1/16 LBA
871113	BEEF RIBEYE 15/UP D/AGE ANGUS	1/10-12 LB
821522	BEEF EXPORT RIB D/AGE ANGUS	1/18-20 LBA
009906	BEEF EXPORT LONG BONE D/AGE ANGUS	1/20 LBA
851521	BEEF EXPORT RIB D/AGE END TO END	1/11-14 LB
780188	BEEF RIBEYE 17/UP D/AGED PRIME	1/15 LB
870865	BEEF EXPORT RIB 20/DN D/AGE PRIME	1/19 LBA
009907	BEEF EXPORT RIB LONGBONE D/AGE PRIME	1/20 LBA
022103	BEEF TOMAHAWK LONG BONE D/AGE WAGYU	1/10-12 LB
090970	BEEF SHORT LOIN 0X1 D/AGE ANGUS	1/18-20 LB
090932	BEEF SHORT LOIN 2X3 D/AGE PRIME	1/30 LB

NOTES



www.driscollfoods.com