

OPERATOR

Operators Save Up to \$250!



FEATURED PRODUCTS

May 1–August 31, 2026

| Smithfield READY TO EAT BACON: STRIPS | | | | |
|----------------------------------------------|-----------------------------------------------------------|--------|-------|-------|
| ITEM CODE | PRODUCT DESCRIPTION | \$/CS | CASES | TOTAL |
| 873024 | SMITHFIELD SELECT PLATINUM FULLY COOKED BACON 18/22 STYLE | \$5.00 | | |
| 873054 | SMITHFIELD SELECT PLATINUM FULLY COOKED BACON 14/18 STYLE | \$5.00 | | |

| Smithfield FRESH BREAKFAST SAUSAGE | | | | |
|-------------------------------------------|--------------------------------------------------------------------------------------------|--------|-------|-------|
| ITEM CODE | PRODUCT DESCRIPTION | \$/CS | CASES | TOTAL |
| 840204 | SMITHFIELD GROUND CHORIZO ROLL, ALL NATURAL, 4/2.5 LB ROLLS, 10 LB CASE, FROZEN *NEW ITEM* | \$5.00 | | |

| Smithfield SMOKED BONELESS HAM | | | | |
|---------------------------------------|------------------------------------------------------------------------------------------------|--------|-------|-------|
| ITEM CODE | PRODUCT DESCRIPTION | \$/CS | CASES | TOTAL |
| 961800 | SMITHFIELD CARVEMASTER APPLEWOOD HAM WITH NATURAL JUICES, GOLD MEDAL, 2/7.65 LB, RANDOM WEIGHT | \$5.00 | | |
| 932924 | SMITHFIELD FLAT HAM, BRONZE MEDAL, HAM AND WATER, 2/11LB, RANDOM WEIGHT | \$5.00 | | |

| Smithfield SMOKED SAUSAGE | | | | |
|----------------------------------|---------------------------------------------------------|--------|-------|-------|
| ITEM CODE | PRODUCT DESCRIPTION | \$/CS | CASES | TOTAL |
| 009058 | SMITHFIELD KIELBASA, GOLD MEDAL, 5/1, 6", 10 LB, FROZEN | \$5.00 | | |

| Smithfield SPECIALTY CUT | | | | |
|---------------------------------|-----------------------------------------------------------------------------|--------|-------|-------|
| ITEM CODE | PRODUCT DESCRIPTION | \$/CS | CASES | TOTAL |
| 090407 | SMITHFIELD CANADIAN HAM, GOLD MEDAL, 95% FAT FREE, 4/3.85 LB, RANDOM WEIGHT | \$5.00 | | |

| Margherita NO CHAR PEPPERONI | | | | |
|-------------------------------------|--------------------------------------------------------------------------|--------|-------|-------|
| ITEM CODE | PRODUCT DESCRIPTION | \$/CS | CASES | TOTAL |
| 092013 | MARGHERITA PEPPERONI, SLICED, 14-16 COUNT, 2/5 LB | \$2.00 | | |
| 840214 | MARGHERITA DICED PEPPERONI, GAS FLUSHED, FROZEN, 2/5 LB BAGS, 10 LB CASE | \$2.00 | | |

| Smithfield FULLY COOKED BREAKFAST SAUSAGE PATTIES | | | | |
|----------------------------------------------------------|---------------------------------------------------------------------------------------------------------------------------|--------|-------|-------|
| ITEM CODE | PRODUCT DESCRIPTION | \$/CS | CASES | TOTAL |
| 871014 | SMITHFIELD PRE COOKED PORK SAUSAGE PATTIES, SILVER MEDAL, CHILD NUTRITION LABELED, 2OZ PATTIES, 1 BAG, 10 LB CASE, FROZEN | \$2.00 | | |
| 404600 | SMITHFIELD PRE COOKED PORK SAUSAGE PATTIES, SILVER MEDAL, 2 OZ PATTIES, 1 BAG, 10 LB CASE, FROZEN | \$2.00 | | |

| Smithfield FULLY COOKED BREAKFAST SAUSAGE LINKS | | | | |
|--------------------------------------------------------|-------------------------------------------------------------------------------------|--------|-------|-------|
| ITEM CODE | PRODUCT DESCRIPTION | \$/CS | CASES | TOTAL |
| 871005 | SMITHFIELD FULLY COOKED SKINLESS SAUSAGE LINK, SILVER MEDAL, 20/1 LB, 10 LB, FROZEN | \$3.00 | | |

► NEW ITEM!

OPERATOR

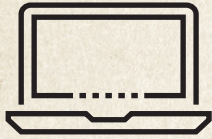
FEATURED PRODUCTS

Operators Save Up to \$250!



May 1–August 31, 2026

REDEEM THIS REBATE IN 10 MINUTES OR LESS! SUBMIT ALL THE FORMS ONLINE VIA RAPIDREBATE.NET!



STEP 1

Log on to
RapidRebate.net



STEP 2

Add product info
& upload invoices



STEP 3

Submit &
check status

INSTRUCTIONS FOR SUBMITTING THIS REBATE:

| | |
|---|-----------------------------------------------------------------------------------------------------------------------------------------------------|
| 1 | Use the grids on the front and back of this page to indicate the number of cases of each product code purchased during the eligible period. |
| 2 | Put the total number of cases purchased in the boxes below. |
| 3 | Put the total \$ amount of the requested rebate in the boxes below. |
| 4 | Complete the contact info (below) and segment info (right) and mail the form, along with required printout/invoice copies, to the address at right. |

Terms and Conditions:
Offer limited to foodservice operators only. Chain operators must participate as single units. Contracted chain and bid accounts cannot participate. This coupon may be redeemed for a minimum of \$20 up to \$250 per individual foodservice operator. Submit this rebate with copies of distributor invoices or distributor printouts verifying valid products were purchased between May 1–August 31, 2026. DISTRIBUTOR PRINTOUTS OR INVOICES MUST INCLUDE THE FOLLOWING OPERATOR INFORMATION: Operator Name, Product Purchased, Number of Cases Purchased, Date the Product was Purchased, Invoice Number and Physical Address. Operators must fill out rebate coupon themselves. Distributor tracking reports do not qualify. Bulk redemptions by distributors and/or DSRs are not allowed. Request must be postmarked no later than September 30, 2026. Offer not redeemable in conjunction with any other offer. Operators may submit more than once until the maximum dollar amount is met; however, the initial submission must meet the minimum requirement of \$20. Allow 10–12 weeks for delivery. Incomplete or incorrect submissions will delay payment. Void where restricted, prohibited or banned.

PLEASE MAIL THIS COUPON WITH COPIES OF DISTRIBUTOR INVOICES TO:

SMITHFIELD CULINARY
STACKED FOR SUCCESS COUPON REDEMPTION
PO BOX 552
TRAVERSE CITY, MI 49685

REBATE QUESTIONS? CALL 1-877-570-5504

Smithfield



NOW SUBMIT YOUR REBATES ONLINE AT WWW.RAPIDREBATE.NET

COUPON CODE: SFS260PR

PLEASE CHECK THE MARKET SEGMENT YOUR OPERATION/TYPE OF RESTAURANT BELONGS IN:

Are you a new Smithfield Culinary customer
or a current Smithfield Culinary customer

COMMERCIAL

- Full Service
- Casual Theme
- Family
- Upscale/Fine Dining
- C-Store
- Hotel/Motel/Resort

OWNERSHIP

- Independent
- Local/Regional Chain
- National Chain

NON-COMMERCIAL

- College/University
- Elementary/Secondary School
- Business & Industry
- Recreational/Entertainment
- Transportation Foodservice
- Military/Correctional

OWNERSHIP

- Contract Management
- Self-Operated

Number of meals served per day:

_____ Breakfast _____ Lunch _____ Dinner

Approximate dollar volume annual food/beverage purchases: _____

MAXIMUM PAYOUT IS \$250 / MINIMUM PAYOUT IS \$20

| | | | | | |
|--------------|----------|-------------|--------------|----------|-------------|
| # of \$1 CS: | X \$1/CS | = Total \$: | # of \$4 CS: | X \$4/CS | = Total \$: |
| # of \$2 CS: | X \$2/CS | = Total \$: | # of \$5 CS: | X \$5/CS | = Total \$: |
| # of \$3 CS: | X \$3/CS | = Total \$: | # of \$8 CS: | X \$8/CS | = Total \$: |

CHECK WILL BE MAILED TO THE ADDRESS SHOWN BELOW (PLEASE PRINT)

| | | | |
|--------------------|--|---------------|------|
| OPERATION NAME: | | CONTACT NAME: | |
| E-MAIL ADDRESS: | | | |
| OPERATION ADDRESS: | | | |
| CITY: | | STATE: | ZIP: |
| TELEPHONE NUMBER: | | FAX NUMBER: | |
| DISTRIBUTOR: | | DSR NAME: | |

YOU CAN ALSO SUBMIT OFFER FORM AND COPIES OF INVOICES ONLINE AT WWW.RAPIDREBATE.NET

FOR MORE INFORMATION ON SMITHFIELD CULINARY PRODUCTS, PROMOTIONS, RECIPES OR MARKETING MATERIALS,

CONTACT YOUR SMITHFIELD CULINARY REPRESENTATIVE/BROKER OR CALL 1-888-327-6526 WWW.SMITHFIELD CULINARY.COM/STACKED