

### FEATURED PRODUCTS

May 1–August 31, 2026

Smithfield <b>READY TO EAT BACON: STRIPS</b>				
ITEM CODE	PRODUCT DESCRIPTION	\$/CS	CASES	TOTAL
873024	SMITHFIELD SELECT PLATINUM FULLY COOKED BACON 18/22 STYLE	\$5.00		
873054	SMITHFIELD SELECT PLATINUM FULLY COOKED BACON 14/18 STYLE	\$5.00		

Smithfield <b>SMOKED BONELESS HAM</b>				
ITEM CODE	PRODUCT DESCRIPTION	\$/CS	CASES	TOTAL
961800	SMITHFIELD CARVEMASTER APPLEWOOD HAM WITH NATURAL JUICES, GOLD MEDAL, 2/7.65 LB, RANDOM WEIGHT	\$5.00		
932924	SMITHFIELD FLAT HAM, BRONZE MEDAL, HAM AND WATER, 2/11LB, RANDOM WEIGHT	\$5.00		

Smithfield <b>SPECIALTY CUT</b>				
ITEM CODE	PRODUCT DESCRIPTION	\$/CS	CASES	TOTAL
090407	SMITHFIELD CANADIAN HAM, GOLD MEDAL, 95% FAT FREE, 4/3.85 LB, RANDOM WEIGHT	\$5.00		

Smithfield <b>FRESH BREAKFAST SAUSAGE</b>				
ITEM CODE	PRODUCT DESCRIPTION	\$/CS	CASES	TOTAL
840204	SMITHFIELD GROUND CHORIZO ROLL, ALL NATURAL, 4/2.5 LB ROLLS, 10 LB CASE, FROZEN *NEW ITEM*	\$5.00		

Smithfield <b>SMOKED SAUSAGE</b>				
ITEM CODE	PRODUCT DESCRIPTION	\$/CS	CASES	TOTAL
009058	SMITHFIELD KIELBASA, GOLD MEDAL, 5/1, 6", 10 LB, FROZEN	\$5.00		

Margherita <b>NO CHAR PEPPERONI</b>				
ITEM CODE	PRODUCT DESCRIPTION	\$/CS	CASES	TOTAL
092013	MARGHERITA PEPPERONI, SLICED, 14-16 COUNT, 2/5 LB	\$2.00		
840214	MARGHERITA DICED PEPPERONI, GAS FLUSHED, FROZEN, 2/5 LB BAGS, 10 LB CASE	\$2.00		

Smithfield <b>FULLY COOKED BREAKFAST SAUSAGE PATTIES</b>				
ITEM CODE	PRODUCT DESCRIPTION	\$/CS	CASES	TOTAL
871014	SMITHFIELD PRE COOKED PORK SAUSAGE PATTIES, SILVER MEDAL, CHILD NUTRITION LABELED, 2OZ PATTIES, 1 BAG, 10 LB CASE, FROZEN	\$2.00		
404600	SMITHFIELD PRE COOKED PORK SAUSAGE PATTIES, SILVER MEDAL, 2 OZ PATTIES, 1 BAG, 10 LB CASE, FROZEN	\$2.00		

Smithfield <b>FULLY COOKED BREAKFAST SAUSAGE LINKS</b>				
ITEM CODE	PRODUCT DESCRIPTION	\$/CS	CASES	TOTAL
871005	SMITHFIELD FULLY COOKED SKINLESS SAUSAGE LINK, SILVER MEDAL, 20/1 LB, 10 LB, FROZEN	\$3.00		

**REDEEM THIS REBATE IN 10 MINUTES OR LESS! SUBMIT ALL THE FORMS ONLINE VIA RAPIDREBATE.NET!**



### STEP 1

Log on to RapidRebate.net



### STEP 2

Add product info & upload invoices



### STEP 3

Submit & check status

#### INSTRUCTIONS FOR SUBMITTING THIS REBATE:

1	Use the grids on the front and back of this page to indicate the number of cases of each product code purchased during the eligible period.
2	Put the total number of cases purchased in the boxes below.
3	Put the total \$ amount of the requested rebate in the boxes below.
4	Complete the contact info (below) and mail the form, along with required printout/invoice copies, to the address at right.

#### Terms and Conditions:

Offer limited to verified sales to individual foodservice operators (sales to contracted chain and bid accounts or redistributors do not qualify). Only individual DSRs are eligible, and only one offer per DSR will be honored. Please make requests for no less than \$20 and no more than the maximum payout of \$500 per DSR. Payouts will not be issued unless a completed W-9 is on file and payout will only be issued directly to the DSR. Requests must be postmarked no later than September 30, 2026. Allow 10–12 weeks for delivery. This offer is good only on the products listed and is not valid in conjunction with any other Smithfield Culinary Rebate offer. Void where restricted, prohibited or banned.

#### IMPORTANT!

If this is your first rebate submission, or you have not yet completed and submitted a W-9, you can find that form here: <https://www.irs.gov/pub/irs-pdf/w9.pdf>

Note: you only have to complete and submit (to [marketingfs@smithfield.com](mailto:marketingfs@smithfield.com)) this form one time.

PLEASE ATTACH DISTRIBUTOR INVOICE COPIES OR INDIVIDUAL DSR PRINTOUTS, INCLUDING YOUR SALESPERSON NAME OR ID, FOR PRODUCTS SOLD FROM MAY 1–AUGUST 31, 2026 TO THIS FORM AND SEND TO:

SMITHFIELD CULINARY  
STACKED FOR SUCCESS COUPON REDEMPTION  
PO BOX 552  
TRAVERSE CITY, MI 49685

REBATE QUESTIONS? CALL 1-877-570-5504



NOW SUBMIT YOUR REBATES ONLINE AT [WWW.RAPI-REBATE.NET](http://WWW.RAPI-REBATE.NET)

#### MAXIMUM PAYOUT IS \$500 / MINIMUM PAYOUT IS \$20

# of \$1 CS:	X \$1/CS	= Total \$:	# of \$4 CS:	X \$4/CS	= Total \$:
# of \$2 CS:	X \$2/CS	= Total \$:	# of \$5 CS:	X \$5/CS	= Total \$:
# of \$3 CS:	X \$3/CS	= Total \$:	# of \$8 CS:	X \$8/CS	= Total \$:

**COUPON CODE: SFS26DSR**

#### CHECK WILL BE MAILED TO THE ADDRESS SHOWN BELOW (PLEASE PRINT)

DISTRIBUTOR NAME:		
ISSUE CHECK TO (DSR NAME):		
E-MAIL ADDRESS:		
DSR'S HOME ADDRESS:		
CITY:	STATE:	ZIP:
DSM:	DSR'S HOME TELEPHONE NUMBER:	

YOU CAN ALSO SUBMIT OFFER FORM AND COPIES OF INVOICES ONLINE AT [WWW.RAPIDREBATE.NET](http://WWW.RAPIDREBATE.NET)  
FOR MORE INFORMATION ON SMITHFIELD CULINARY PRODUCTS, PROMOTIONS, RECIPES OR MARKETING MATERIALS,  
CONTACT YOUR SMITHFIELD CULINARY REPRESENTATIVE/BROKER OR CALL 1-888-327-6526 [WWW.SMITHFIELDCULINARY.COM/STACKED](http://WWW.SMITHFIELDCULINARY.COM/STACKED)

# OPERATOR

Operators Save Up to \$250!



## FEATURED PRODUCTS

May 1–August 31, 2026

Smithfield <b>READY TO EAT BACON: STRIPS</b>				
ITEM CODE	PRODUCT DESCRIPTION	\$/CS	CASES	TOTAL
873024	SMITHFIELD SELECT PLATINUM FULLY COOKED BACON 18/22 STYLE	\$5.00		
873054	SMITHFIELD SELECT PLATINUM FULLY COOKED BACON 14/18 STYLE	\$5.00		

Smithfield <b>SMOKED BONELESS HAM</b>				
ITEM CODE	PRODUCT DESCRIPTION	\$/CS	CASES	TOTAL
961800	SMITHFIELD CARVEMASTER APPLEWOOD HAM WITH NATURAL JUICES, GOLD MEDAL, 2/7.65 LB, RANDOM WEIGHT	\$5.00		
932924	SMITHFIELD FLAT HAM, BRONZE MEDAL, HAM AND WATER, 2/11LB, RANDOM WEIGHT	\$5.00		

Smithfield <b>SPECIALTY CUT</b>				
ITEM CODE	PRODUCT DESCRIPTION	\$/CS	CASES	TOTAL
"+" & )	SMITHFIELD CANADIAN HAM, GOLD MEDAL, 95% FAT FREE, 4/3.85 LB, RANDOM WEIGHT	\$5.00		

Smithfield <b>FRESH BREAKFAST SAUSAGE</b>				
ITEM CODE	PRODUCT DESCRIPTION	\$/CS	CASES	TOTAL
* & S' &	SMITHFIELD GROUND CHORIZO ROLL, ALL NATURAL, 4/2.5 LB ROLLS, 10 LB CASE, FROZEN *NEW ITEM*	\$5.00		

Smithfield <b>SMOKED SAUSAGE</b>				
ITEM CODE	PRODUCT DESCRIPTION	\$/CS	CASES	TOTAL
" " + ' * *	SMITHFIELD KIELBASA, GOLD MEDAL, 5/1, 6", 10 LB, FROZEN	\$5.00		

Margherita <b>NO CHAR PEPPERONI</b>				
ITEM CODE	PRODUCT DESCRIPTION	\$/CS	CASES	TOTAL
" + S' # %	MARGHERITA PEPPERONI, SLICED, 14-16 COUNT, 2/5 LB	\$2.00		
* & S # &	MARGHERITA DICED PEPPERONI, GAS FLUSHED, FROZEN, 2/5 LB BAGS, 10 LB CASE	\$2.00		

Smithfield <b>FULLY COOKED BREAKFAST SAUSAGE PATTIES</b>				
ITEM CODE	PRODUCT DESCRIPTION	\$/CS	CASES	TOTAL
*) # # &	SMITHFIELD PRE COOKED PORK SAUSAGE PATTIES, SILVER MEDAL, CHILD NUTRITION LABELED, 2OZ PATTIES, 1 BAG, 10 LB CASE, FROZEN	\$2.00		
& & " "	SMITHFIELD PRE COOKED PORK SAUSAGE PATTIES, SILVER MEDAL, 2 OZ PATTIES, 1 BAG, 10 LB CASE, FROZEN	\$2.00		

Smithfield <b>FULLY COOKED BREAKFAST SAUSAGE LINKS</b>				
ITEM CODE	PRODUCT DESCRIPTION	\$/CS	CASES	TOTAL
*) # " "	SMITHFIELD FULLY COOKED SKINLESS SAUSAGE LINK, SILVER MEDAL, 20/1 LB, 10 LB, FROZEN	\$3.00		

► NEW ITEM!

# OPERATOR

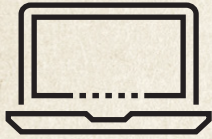
## FEATURED PRODUCTS

# Operators Save Up to \$250!



May 1–August 31, 2026

**REDEEM THIS REBATE IN 10 MINUTES OR LESS! SUBMIT ALL THE FORMS ONLINE VIA RAPIDREBATE.NET!**



### STEP 1

Log on to  
RapidRebate.net



### STEP 2

Add product info  
& upload invoices



### STEP 3

Submit &  
check status

#### INSTRUCTIONS FOR SUBMITTING THIS REBATE:

1	Use the grids on the front and back of this page to indicate the number of cases of each product code purchased during the eligible period.
2	Put the total number of cases purchased in the boxes below.
3	Put the total \$ amount of the requested rebate in the boxes below.
4	Complete the contact info (below) and segment info (right) and mail the form, along with required printout/invoice copies, to the address at right.

#### Terms and Conditions:

Offer limited to foodservice operators only. Chain operators must participate as single units. Contracted chain and bid accounts cannot participate. This coupon may be redeemed for a minimum of \$20 up to \$250 per individual foodservice operator. Submit this rebate with copies of distributor invoices or distributor printouts verifying valid products were purchased between May 1–August 31, 2026. DISTRIBUTOR PRINTOUTS OR INVOICES MUST INCLUDE THE FOLLOWING OPERATOR INFORMATION: Operator Name, Product Purchased, Number of Cases Purchased, Date the Product was Purchased, Invoice Number and Physical Address. Operators must fill out rebate coupon themselves. Distributor tracking reports do not qualify. Bulk redemptions by distributors and/or DSRs are not allowed. Request must be postmarked no later than September 30, 2026. Offer not redeemable in conjunction with any other offer. Operators may submit more than once until the maximum dollar amount is met; however, the initial submission must meet the minimum requirement of \$20. Allow 10–12 weeks for delivery. Incomplete or incorrect submissions will delay payment. Void where restricted, prohibited or banned.

PLEASE MAIL THIS COUPON WITH COPIES OF DISTRIBUTOR INVOICES TO:

SMITHFIELD CULINARY  
STACKED FOR SUCCESS COUPON REDEMPTION  
PO BOX 552  
TRAVERSE CITY, MI 49685

REBATE QUESTIONS? CALL 1-877-570-5504

Smithfield



NOW SUBMIT YOUR REBATES ONLINE AT WWW.RAPIDREBATE.NET

#### MAXIMUM PAYOUT IS \$250 / MINIMUM PAYOUT IS \$20

# of \$1 CS:	X \$1/CS	= Total \$:	# of \$4 CS:	X \$4/CS	= Total \$:
# of \$2 CS:	X \$2/CS	= Total \$:	# of \$5 CS:	X \$5/CS	= Total \$:
# of \$3 CS:	X \$3/CS	= Total \$:	# of \$8 CS:	X \$8/CS	= Total \$:

#### CHECK WILL BE MAILED TO THE ADDRESS SHOWN BELOW (PLEASE PRINT)

OPERATION NAME:		CONTACT NAME:	
E-MAIL ADDRESS:			
OPERATION ADDRESS:			
CITY:		STATE:	ZIP:
TELEPHONE NUMBER:		FAX NUMBER:	
DISTRIBUTOR:		DSR NAME:	

**COUPON CODE: SFS260PR**

PLEASE CHECK THE MARKET SEGMENT YOUR OPERATION/TYPE OF RESTAURANT BELONGS IN:

Are you a new Smithfield Culinary customer   
or a current Smithfield Culinary customer

#### COMMERCIAL

- Full Service  
 Casual Theme  
 Family  
 Upscale/Fine Dining  
 C-Store  
 Hotel/Motel/Resort

#### NON-COMMERCIAL

- College/University  
 Elementary/Secondary School  
 Business & Industry  
 Recreational/Entertainment  
 Transportation Foodservice  
 Military/Correctional

#### OWNERSHIP

- Independent  
 Local/Regional Chain  
 National Chain

#### OWNERSHIP

- Contract Management  
 Self-Operated

Number of meals served per day:

\_\_\_\_\_ Breakfast \_\_\_\_\_ Lunch \_\_\_\_\_ Dinner

Approximate dollar volume annual food/beverage purchases: \_\_\_\_\_

YOU CAN ALSO SUBMIT OFFER FORM AND COPIES OF INVOICES ONLINE AT WWW.RAPIDREBATE.NET

FOR MORE INFORMATION ON SMITHFIELD CULINARY PRODUCTS, PROMOTIONS, RECIPES OR MARKETING MATERIALS,

CONTACT YOUR SMITHFIELD CULINARY REPRESENTATIVE/BROKER OR CALL 1-888-327-6526 WWW.SMITHFIELD CULINARY.COM/STACKED