



# RETAIL READY





# RETAIL READY CONTENTS

2

DAIRY

5

MEAT  
ALTERNATIVES

6

GRAINS &  
PASTA

8

BREAKFAST

9

BREAD

10

SPICES,  
CONDIMENTS,  
SAUCES &  
DRESSINGS

13

CANNED  
VEGETABLES

14

TRUFFLE  
PRODUCTS

15

PANTRY  
ESSENTIALS

19

FROZEN  
GOODS

21

SNACK  
FOODS

23

DESSERTS

25

NON-FOODS

26

BEVERAGES

# DAIRY

## CHEESE

---



**CHEESE AMERICAN  
YELLOW SINGLES**  
BONGARDS  
12/12 OZ, #033083



**MOZZARELLA  
SLICED**  
GREAT LAKES  
6/1.5 LB, #030531



**MOZZARELLA  
FRESH SLICED**  
BELGIOIOSO  
8/1 LB, #030607



**MOZZARELLA  
PEARLINI 2.5 OZ**  
BELGIOIOSO  
12/8 OZ, #030620



**BURRATA CHEESE**  
2-4 OZ  
BELGIOIOSO  
6/8 OZ #031247



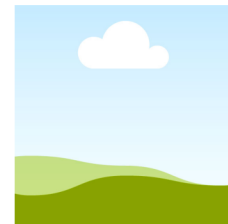
**CHEESE MOZZARELLA  
BUFFALO BALL**  
LUPARA  
12/7 OZ #521210



**WHITE CHEDDAR  
SLICED MILD**  
GREAT LAKES  
6/1.5 LB, #031131



**WHITE CHEDDAR  
SLICED**  
CABOT  
4/2.5 LB, #031028



**AMERICAN  
SWISS CHEESE  
SLICED**  
BONGARDS  
4/5 LB, #681608



**SWISS CHEESE  
SLICED**  
ALTO  
8/1.5 LB #034407



**SWISS CHEESE  
SLICED RDF**  
ALPINE LACE  
8/1.5 LB #031014



**CHEESE  
MOZZARELLA  
LOAF WM**  
GALBANI  
8/5 LBA, #35008

## CHEESE

---



**MOZZARELLA  
CHEESE  
SHREDDED WM  
GALBANI**  
6/5 LB, #31022



**CHEESE BRIE  
PLAIN  
PRESIDENT**  
2/2 LB, #030207



**CHEESE BRIE  
SPREAD  
PRESIDENT**  
2/3.25 LB #030232



**CHEESE CREAM  
TEMPTEE**  
12/8 OZ #41211



**CREAM CHEESE  
SOFT  
PHILADELPHIA**  
12/8 OZ, #41202



**CHEESE  
MANCHEGO  
CURADO WHEELS**  
PRESIDENT  
2/6.6 LB, #3208



**PROVOLONE  
CHEESE  
GALBANI**  
3/12 LBA, #31017



**RICOTTA CHEESE  
WM  
GALBANI**  
6/3 LB, #35014



**GOAT HONEY  
CHEESE  
CELEBRITY**  
6/10.5 OZ, #030341

# DAIRY

## YOGURT

---



**YOGURT GREEK  
BLUEBERRY FFR  
CHOBANI**  
12/5.3 OZ #082149



**YOGURT GREEK  
PLAIN FFR  
CHOBANI**  
12/5.3 OZ #082160



**YOGURT GREEK  
POMEGRANATE FFR  
CHOBANI**  
12/5.3 OZ #082167



**YOGURT GREEK PEACH  
FFR  
CHOBANI**  
12/5.3 OZ #82147



**YOGURT GREEK  
VANILLA FFR  
CHOBANI**  
12/5.3 OZ #82148



**YOGURT GREEK  
VANILLA  
CHOBANI**  
12/4 OZ #082164



**YOGURT GREEK  
STRAWBERRY  
CHOBANI**  
12/4 OZ, #082162



**YOGURT GREEK  
BLUEBERRY  
CHOBANI**  
12/4 OZ, #082163



**DANIMALS  
STRAWBERRY  
DANNON YOGURT**  
48/4 OZ #041012



**DANIMALS STRAW  
BANANA  
DANNON YOGURT**  
48/4 OZ #041011



**DANIMALS VANILLA  
DANNON YOGURT**  
48/4 OZ #041010



**VARIETY  
RASPBERRY PEACH  
YOPLAIT YOGURT**  
48/4 OZ #061264



**STRAWBERRY  
GOGURT  
YOPLAIT YOGURT**  
96/2 OZ #071268



**STRAWBERRY  
BANANA BASH  
YOPLAIT YOGURT**  
48/4 OZ #915194



**YOGURT ACTIVIA  
STRAWBERRY  
DANNON**  
24/4 OZ #001974



**ACTIVIA MIXED  
BERRY  
DANNON YOGURT**  
24/4 OZ #001975

# DAIRY

## BUTTER, MILK & CREAMERS

---

<b>Item#</b>	<b>Description</b>	<b>Pack Size</b>	<b>Brand</b>
012400	BUTTER WHIPPED SALTED	12 / 8 OZ	BREAKSTONE
310315	CREAM WHIPPED TOPPING REAL	12 / 15 OZ	REDDI WHIP
102551	CREAMER COFFEE POWDER	12/16 OZ	COFFEEMATE
061208	CREAMER LIQUID HAZELNUT	6 / 16 OZ	COFFEEMATE
061222	HALF & HALF UHT	12 / 32 OZ	PACKER
61612	HALF & HALF	12/1 QT	CREAM O LAND
061207	MILK 1% UHT	6 / 1/2 GAL	CROWLEY
001325	MILK 2% ASEPTIC RDF	12 / 32 OZ	NATREL
064402	MILK CHOCOLATE QUIK ULTRA	12 / 14 OZ	NESQUIK
061205	MILK WHOLE UHT	6 / 1/2 GAL	PACKER
061213	MILK SKIM UHT	6/1/2 GAL	CROWLEY

## DAIRY ALTERNATIVES

---

<b>Item#</b>	<b>Description</b>	<b>Pack Size</b>	<b>Brand</b>
891201	CREAMER COFFEE NON DAIRY	12 / 32 OZ	RICHS
063229	MILK ALMOND ORIGINAL	6/32 OZ	SILK
001333	MILK ALMOND ORIGINAL SWT	6/64 OZ	ALMOND BREEZE
063220	MILK ALMOND UNSWEETENED	12 / 32 OZ	ALMOND BREEZE
432230	MILK ALMOND UNSWEETENED	6/32 OZ	CALIFIA FARMS
063221	MILK ALMOND VANILLA	12 / 32 OZ	ALMOND BREEZE
063227	MILK COCONUT OGC	12/32 OZ	SO DELICIOUS
001533	MILK OAT ORIGINAL	6 / 52 OZ	PLANET OAT
036216	MILK SOY UNSWEETENED OGC	6/32 OZ	SILK

# MEAT ALTERNATIVES



**BRAT SWEET  
ITALIAN VEGAN  
BEYOND MEAT**  
50/3.52 OZ #111720



**SAUSAGE PLANT  
BASED HOT  
BEYOND MEAT**  
8/14 OZ #111715



**MEAT MEATLESS BEYOND  
BURGER GROUND**  
BEYOND MEAT 6/2 LB  
#111718



**BURGER MEATLESS  
PATTIES**  
BEYOND MEAT 40/4 OZ  
#878309



# GRAINS

## GRAINS, RICE & MORE

---



**TRI COLOR QUINOA  
PRE-COOKED  
ROLAND**  
6/1 KG #551217



**QUINOA WHITE  
ROLAND**  
12 / 12 OZ #551216



**RICE NOODLES THIN  
A TASTE OF THAI**  
6/1 LB #561360



**VERMICELLI  
NOODLE RICE  
ROLAND**  
12/8.8 OZ #172470



**RICE BLACK ITALIAN  
UNCLE BENS**  
6/17.6 OZ #130020



**RICE ARBORIO  
RISOTTO  
AMBROSIA**  
12/35 OZ #691840



**RICE YELLOW  
GOYA**  
18/14 OZ #421801



**RICE & RED BEANS  
GOYA**  
24 / 8 OZ #422401



**RICE BROWN WGR  
INSTANT  
MINUTE**  
12/14 OZ #422513



**RICE LONG GRAIN AND  
WILD  
PRODUCER**  
6 / 36 OZ #422004



**POLENTA YELLOW  
QUICK COOK  
ROLAND**  
12/8.8 OZ, #205049



**COUSCOUS  
ISRAELI  
ROLAND**  
4/5 lb, #421005

# PASTA



**PASTA EGG  
PAPPARDELLE  
DECECCO**  
12 / 8.8 OZ #371027



**PASTA FETTUCCINE  
NEST  
DECECCO**  
12 / 8.8 OZ #372096



**PASTA PENNE RIGATE  
DECECCO**  
12/1 LBS #371220



**PASTA ELBOW  
MACARONI GF  
BARILLA**  
8/12 OZ #371106



**WAVY LASAGNA  
BARILLA**  
12 / 16 OZ #372089



**PASTA MEZZI  
RIGATONI  
BARILLA**  
12/16 OZ #371256



**PASTA ORZO  
BARILLA**  
16/16 OZ #372084



**PASTA CAMPANELLE  
BARILLA**  
12/16 OZ #372010



**PASTA PENNE  
BARILLA**  
12/16 OZ #372086



**PASTA ROTINI WGR  
BARILLA**  
8/16 OZ #371109



**PASTA PENNE WGR  
BARILLA**  
8/16 OZ #371060



**ORZO GREEK  
KONTOS  
12/16 OZ #372023**

# BREAKFAST

## COLD CEREAL

---



**KIX  
CEREAL**  
GENERAL MILLS  
4/25 OZ, #174101



**CHEX  
CEREAL**  
GENERAL MILLS  
10/14 OZ, #261410



**CRISPY RICE BOXED  
KRASDALE CEREAL**  
12/12 OZ, #174960



**CORN FLAKES**  
KRASDALE  
12/18 OZ, #175016

## HOT CEREAL

---



**CEREAL OATMEAL**  
QUAKER  
12/42 OZ #264201



**CEREAL OATMEAL**  
QUAKER  
12/42 OZ #264209



**OATMEAL INSTANT  
VARIETY**  
QUAKER  
12/15.1 OZ #261219



**OATMEAL IRISH**  
MCANN  
12/28 OZ, #264615

## GRAB N' GO

---



**POPTART BROWN  
SUGAR CINNAMON  
FROSTED**  
KELLOGGS  
72/2 CT #110220



**POP TART  
BLUEBERRY FROSTED**  
KELLOGGS  
72/2 CT #110217



**POP TART STRAW  
FROSTED**  
KELLOGGS  
72/3.5 OZ, #110219



**POPTART BROWN  
SUGAR WGR 12/10**  
KELLOGGS  
12/10 CT #110224



**POPTART  
STRAWBERRY WGR**  
KELLOGGS  
12/10 CT #110225

# BREAD

## FROZEN BREAD

---



**DOUGH EMPANADA  
DISCS 7**  
GOYA  
24/20 OZ #931008



**DOUGH EMPANADA  
WHITE 5**  
GOYA  
24/14 OZ# 931004



**FLATBREAD  
SOUTHWESTERN  
KONTOS**  
12/10 BC #931205



**FLATBREAD MINI  
PRE-GRILLED  
KONTOS**  
10/17 OZ #932516



**PITA POCKET  
WHEAT 6"**  
TOUFAYAN  
12/6 CT #931202



**PITA POCKET  
WHITE 6"**  
TOUFAYAN  
12/6 CT #931211

## FRESH BREAD

---



**ROCKLAND BAGEL  
PLAIN 1/6 CT #120165**  
CINNAMON RAISIN 1/6 CT #120175



**BREAD CINNAMON RAISIN  
SLICED**  
ROCKLAND  
1/LOAF #120146



**BREAD GARLIC**  
ROCKLAND  
1/LOAF #120339



**ROCKLAND PULLMAN  
WHEAT 1/LOAF #120078**  
WHITE 1/LOAF #120072



**BUN  
HAMBURGER**  
ROCKLAND  
1/DOZ #120240



**ROLL HOT DOG  
BUN**  
ROCKLAND  
1/DOZ #120183



**BREAD PB  
ROSEMARY OLIVE  
OIL**  
LA BREA  
12/18 OZ #120264

# SPICES

## SPICES & SEASONINGS



**ADOBO W/O PEPPER**  
GOYA  
12/28 OZ #920575



**ADOBO WITH PEPPER**  
GOYA  
12/28 OZ #920571



**SAZON ORIGINAL**  
GOYA  
24/12 ENVL #920572



**SOFRITO RED JARS**  
GOYA  
24/12 OZ #920520



**ORIGINAL RANCH MIX**  
HIDDEN VALLEY  
18 / 3.2 OZ #161801



**COARSE SEA SALT**  
ROLAND  
12/26.5 OZ, #432002



**SEA SALT GRINDER**  
MCCORMICK  
36/2.12 OZ #438003



**SALT SEASONED**  
LAWRYS  
12/16 OZ, #481307



**PEPPER BLACK GROUND**  
MCCORMICK  
6/18 OZ #481382



**PEPPERCORN BLACK GRINDER**  
MCCORMICK  
6/1.2 OZ #384812



**ONION GRANULATED**  
MCCORMICK  
6/18 OZ #481311



**CHILI POWDER DARK**  
EMERALD  
4/6 LB #481331



**GARLIC DARK**  
MCCORMICK  
6/21 OZ #485066



**MAGGI SEASONING**  
NESTLE  
6/27 OZ #211201



**BLACKENED REDFISH**  
MAGIC  
MAGIC SEASONING,  
4/24 OZ #481357



**SEASONING MOJITO LIME**  
MCCORMICK  
6/27 OZ #481446



**SEASONING GARLIC & HERB**  
MCCORMICK  
6/20 OZ, #522078



**SEASONING BBQ GRILL MATES**  
MCCORMICK  
6/27 OZ, #481422



**SEASONING STEAK MONTREAL**  
MCCORMICK  
6/29 OZ #481269



**SEASONING CHICKEN MONTREAL**  
MCCORMICK  
6/23 OZ #481271

# CONDIMENTS & SAUCES

## STEAK SAUCE & BBQ SAUCE

---



**STEAK SAUCE**  
A1  
12/10 OZ #461001



**STEAK SAUCE**  
PETER LUGER  
12/12.6 OZ #462409



**SAUCE BBQ RETAIL**  
PARADE  
12/18 OZ #790415



**HONEY BARBECUE**  
KRAFT SAUCE  
12/18 CT #870451

## HOT SAUCE

---



**SAUCE HOT**  
TAPTIO  
24/5 OZ #416316



**SAUCE RED HOT**  
EL YUCATECO  
12/4 OZ #160998



**SAUCE SWEET CHILI**  
MAE PLOY  
12/32 OZ #463008



**SAUCE TABASCO**  
TABASCO  
12/5 OZ #462408

## KETCHUP

---



**KETCHUP SQUEEZE BTL**  
HUNTS  
12/20 OZ #302406



**KETCHUP CLEAR BOTTLE**  
HEINZ  
#302801 16/14 OZ  
#300403 30/20 OZ



**KETCHUP BOTTLE USD**  
RED GOLD  
#303023, 25/20 OZ

## MAYO & MUSTARD

---



**MAYONNAISE**  
SQUEEZE BOTTLE  
HELLMANN'S  
12/11.5 OZ #250507



**MUSTARD GREY**  
POUPON SQ  
GREY POUPON  
12/10 OZ #324805



**MUSTARD**  
YELLOW SQUEEZE  
FRENCH'S  
12/12 OZ #790407

# DRESSINGS

## DRESSINGS

---



**DRESSING BALSAMIC  
VINAIGRETTE**  
KENS 6/32 OZ #310436



**DRESSING BLUE  
CHEESE**  
KENS 6/32 OZ #310437



**DRESSING CULINARY  
CAESAR KENS**  
6/32 OZ #310438



**DRESSING GOLDEN  
ITALIAN KENS**  
6/32 OZ #310435

---



**DRESSING SUPREME  
THOUSAND ISLAND**  
KENS 6/32 OZ, #160580



**DRESSING RANCH LITE  
KENS**  
6/32 OZ #160469



**DRESSING ROBUSTO ITALIAN  
WISHBONE**  
12/8 OZ #161209



**DRESSING ITALIAN  
WISHBONE**  
12/8 OZ #851580

---



**DRESSING RANCH  
WISHBONE**  
12/8 OZ #161210



**DRESSING 1000 ISLAND  
WISHBONE**  
12/8 OZ #161214



**DRESSING BLUE CHEESE  
WISHBONE**  
12/8 OZ #161204



**DRESSING HONEY MUSTARD  
KENS**  
6/32 OZ #310428

# CANNED VEGETABLES



**BEANS BAKED**  
BATHCELORS  
12/14.8 OZ #481884



**BLACK BEANS**  
FURMANO  
6/#10 #530706



**BLACK BEANS LRS**  
GOYA  
24/15.5 OZ #920596



**GARBANZO BEAN**  
GOYA  
24/15.5 OZ #920597



**BEANS PINK**  
GOYA  
LRS, 24/15.5 OZ, #920595  
24/15.5 OZ, #532404



**PINTO BEANS LRS,**  
GOYA  
24/15.5 OZ #920598



**PIGEON GREEN LRS,**  
GOYA  
24/15 OZ #983250



**CANNELLINI BEAN WHITE**  
GOYA  
24/15.5 OZ #983650



**GARBANZO BEAN**  
FURMANO  
24/15.5 OZ, #073859



**CAPER CAPOTES,**  
DEL DESTINO  
6/32 OZ #031116



**CHILIS GREEN**  
DICED  
ORTEGA  
12 / 26 OZ #390619



**CORN WHOLE**  
KERNEL SWEET  
GREEN GIANT  
24/ 15.3 OZ #530777



# TRUFFLE PRODUCTS

## SAUCE & PEELINGS

---



**TRUFFLE PEELINGS  
TUBER INDICUM  
SUMMER  
URBANI  
#350686, 6/11 OZ**



**TRUFFLE PEELINGS  
BLACK  
URBANI  
#350678, 6/7 OZ**



**SAUCE BLACK  
TRUFFLE &  
MUSHROOM  
URBANI  
#105667, 6/6.35 OZ**

## OIL

---



**WHITE TRUFFLE OIL  
DALLESANDRO  
#350641, 1/1 OZ**



**WHITE TRUFFLE OIL  
PONS  
#350615, 6/8.5 OZ**



**WHITE TRUFFLE OIL  
ROLAND  
#350614, 6/8.4 OZ**

# PANTRY ESSENTIALS

## BROTHS

---



**BROTH CHICKEN**  
COLLEGE INN  
24 / 14 OZ  
#232402



**BROTH BEEF LRS**  
COLLEGE INN  
24 / 14 OZ  
#232403



**BROTH VEGETABLE**  
SWANSON  
12/32 OZ #25873

## GRAVIES

---



**GRAVY MASTER**  
GRAVY MASTER  
12 / 32 OZ #872220



**GRAVY TURKEY**  
**BASE**  
TRIO  
8 / 20 OZ #231209

## OILS & VINEGAR

---



**VINEGAR SHERRY**  
ROLAND  
12/25.4 OZ #551203



**COOKING SAUTE & GRILL**  
PAM SPRAY  
6 / 17 OZ #351203



**OIL GRAPESEED**  
GRAPEOLA  
12 / 1 LT #551289



**OIL VEGETABLE**  
WESSON  
4/1 GAL #350631

## TOMATO PRODUCTS

---



**TOMATO PASTE**  
HUNTS  
HUNTS  
24 / 12 OZ #522402



**TOMATO SAUCE**  
GOYA  
48 / 8 OZ #524802



**TOMATO SAUCE**  
FURMAN  
12 / 15 OZ #522505



**TOMATOES STEWED**  
LRS  
FURMANO  
12 / 14.5 OZ #521282

# PANTRY ESSENTIALS

## PICKLES

---



**GARLIC DILL SPEAR**  
HARVEST PICKLE  
12 / 32 OZ #391545



**HORSERADISH SPEAR**  
PATRIOT PICKLE  
12 / 32 OZ #391550



**HOT AND ZESTY CHIP**  
HARVEST PICKLE  
12 / 32 OZ # 391549



**GARLIC DILL CHIPS KOSH**  
HARVEST PICKLE  
12 / 32 OZ #391546



**KOSHER DILL WHOLE**  
HARVEST PICKLE  
12/32 OZ #391547



**PICKLE SWEET CANDIED CHIPS**  
PATRIOT PICKLE  
12 / 32 OZ # 391576



**PICKLE GREEN HALF SOUR**  
HARVEST  
12 / 32 OZ # 391548

## MISC.

---



**BEEFARONI**  
CHEF BOYARDEE  
12/7.5 OZ #531209



**CORNED BEEF HASH**  
HORMEL  
12/14 OZ #730613



**SPAM**  
REDUCED SALT  
12/12 OZ #039242



**ONION CRISPY FRIED**  
FRESH GOURMET  
6 / 24 OZ #340683



**TURKEY BACON**  
SMOKED SLICED  
GODSHALLS  
12/12 OZ #780111



**BOLOGNA BEEF**  
SLICED  
6/1 LB #780127



**COTTO SALAMI**  
SLICED  
12/12 OZ #780182

# PANTRY ESSENTIALS

## NUTS & DRIED FRUIT

---



**PEANUTS DRY ROASTED SLT  
FISHER**  
3/32 OZ #342555



**PEANUTS DRY ROASTED SALTED  
PLANTERS**  
6/52 OZ #341214



**RAISINS SEEDLESS NATURAL  
KRASDALE**  
24/15 OZ #790500

## BAKING INGREDIENTS

---



**CHIPS MINI  
HERSHEY**  
12 / 12 OZ # 111214



**CHIPS SEMI SWEET  
HERSHEY**  
12 / 12 OZ # 111210



**MIX BROWNIE  
DOUBLE CHOCOLATE  
DUNCAN HINES**  
12 / 17.6OZ # 121203

## PEANUT BUTTER, JAMS, JELLIES & HONEY

---



**PEANUT BUTTER CREAMY  
SKIPPY**  
12 / 16.3 OZ #241203



**PEANUT BUTTER NATURAL  
JIF**  
12 / 16 OZ #241214



**STRAWBERRY JELLY SQUEEZE  
WELCJ**  
12/20 OZ, #241210



**STRAWBERRY JELLY SQUEEZE  
SMUCKERS**  
12/20 OZ, #241235



**GRAPE JELLY SQUEEZE  
SMUCKERS JAM**  
12/20 OZ, #241236



**EXTRA HOT HONEY  
MIKES HOT HONEY**  
#415265, 4/24 OZ



**HONEY HOT  
MIKES HOT HONEY**  
#415268, 6/12 OZ



**HONEY HOT MINI  
MIKES HOT HONEY**  
#415266, 12/1.4 OZ



**JELLY GRAPE  
PACKER**  
#370407, 12/10 OZ

# PANTRY ESSENTIALS

## SUGARS, SWEETENERS & SYRUPS

---



**SUGAR GRANULATED DOMINO**  
24/1 LB, # 492406



**SPLENDA SUGAR SUBSTITUTE SPLENDA**  
8/9.7 OZ #491202



**SYRUP PANCAKE SGF RDC SMUCKERS**  
12/14.5 OZ, #381007

## ASSORTED ITEMS

---

ITEM #	DESCRIPTION	PACK SIZE	Brand	CATEGORY
150626	BEANS GREEN CUT	18/16 OZ	PACKER	CANNED GOODS
172430	BEANS RED KIDNEY	24/14 OZ	PACKER	CANNED GOODS
391203	CAPER NON-PAREIL	6/32 OZ	PACKER	CANNED GOODS
192409	TUNA CHUNK LITE RETAIL	24/12 OZ	BUMBLE BEE	CANNED SEAFOOD
531519	ENTREE CHICKEN W/RICE & VEG	12:7.5 OZ	CHEF BOY	CANNED ENTREE
471243	SOUP CHICKEN NOODLE	12:50 OZ	CAMPBELLS	CANNED SOUPS
471234	SOUP TOMATO CONDENSED	12:50 OZ	CAMPBELLS	CANNED SOUPS
471272	SOUP MUSHROOM CREAM OF	24:10.5 OZ	HARVEST	CANNED SOUPS
471273	SOUP CREAM OF CHICKEN	24:10.5 OZ	VENICE MAID	CANNED SOUPS
900368	SOUP BEEF NOODLE CUP	6:2.25 OZ	NISSIN	CANNED SOUPS
232406	GRAVY CHICKEN	24 / 10.5 OZ	SAVORY FARM	GRAVIES
924807	MUFFIN CORN IW	72/1.8 OZ	MUFFINTOWN	IW DESSERTS
924811	MUFFIN CORN IW	24/4 OZ	SARA LEE	IW DESSERTS
924823	MUFFIN IW WGR CHOC CHIP RDF	96/2 OZ	MUFFINTOWN	IW DESSERTS
931470	WAFFLE BELGIAN SWEET IW	24/3.53 OZ	EURO PASTRY	IW DESSERTS
340673	DUMPLING WRAPPER THIN	16/14 OZ	CHEF ONE	MISC GROCERY

# FROZEN

## FROZEN BAKED GOODS

---



**CORN MUFFIN IW**  
CHEF PIERRE  
24/4 OZ #924811



**DANISH ASST IW 3OZ T&S**  
CHEF PIERRE  
24/3 OZ #922399



**MUFFIN BLUEBERRY IW**  
CHEF PIERRE  
24/4 OZ # 910048



**MUFFIN BLUEBERRY CRUMB**  
DAVIDS  
12 / 6 OZ #921133



**MUFFIN BANANA IW RDF**  
MUFFINTOWN  
96/2 OZ #924822



**MUFFIN BRAN WW IW**  
MUFFINTOWN  
96/2 OZ #909482



**MUFFIN IW WGR BLUEBERRY RDF**  
MUFFINTOWN  
96/2 OZ #924825



**MUFFIN WGR CHOC CHIP IW**  
MUFFINTOWN 48/3.6 OZ  
#924834



**MUFFIN CHOC CHIP IW 4OZ**  
OTIS SPUNKMEYER  
24/4 OZ #920628



**MUFFIN CORN IW**  
OTIS SPUNKMEYER  
24/4 OZ #920627



**MUFFIN IW CHOC CHOC CHIP**  
OTIS SPUNKMEYER  
24/4 OZ #920630



**LOAF WGR MINI CORNBREAD IW**  
MUFFIN TOWN  
72/2 OZ #924819



**IW PLAIN GTF**  
UDIS BAGEL  
72/2 OZ #960634



**GTF IW BLUEBERRY**  
UDIS MUFFIN  
36/3 OZ #960649



**BAGEL WGR IW**  
LENDERS  
72/2 OZ #010416



**GTF IW DBL CHOC**  
UDIS MUFFIN  
36/3 OZ #960650

# FROZEN

## FROZEN VEGETABLES & FRUIT

---



**CORN & BLACK BEANS  
ROASTED  
SIMPLOT,  
6/2.5 LB #883114**



**POTATO HALVES RST  
BABY W/HERBS  
SIMPLOT,  
6/2.5 LB #479156**



**POTATO ROASTED  
RED W/ ROSEMARY  
SIMPLOT  
6/2.5 LB #831501**



**PEPPER ONION  
BLEND FLAMEROAST  
SIMPLOT  
6/2.5 LB #833088**



**VEG MONACO BLEND  
SIMPLOT  
8/3 LB #700231**



**VEGGIE BLEND  
MONTEREY  
SIMPLOT  
8/3 LB #941508**



**VEGGIE BLEND  
SONOMOA  
SIMPLOT  
8/3 LB #941500**



**VEGGIE BLEND  
TUSCAN  
SIMPLOT  
8/3 LB #700231**



**VEG BLEND  
MIREPOIX DICED  
FRZN  
SIMPLOT  
12/2 LB #099589**



**ACAI PURE ORIGINAL  
ACAI EXOTIC  
15/14 OZ #854163**

## FROZEN ENTREES

---



**PIEROGIES ONION  
POTATO  
MRS. T'S  
12/12 CT #949032**

# SNACK FOODS

## SNACKS & CHIPS

---



**APPLESAUCE  
MOTT'S**  
12/24 OZ #221202



**HUMMUS CLASSIC W.  
PRETZEL  
SABRA**  
12/4.56 OZ #61675



**CHOCOLATE INSTANT  
PUDDING  
JELLO**  
24/3.9 OZ #80602



**PUDDING VANILLA FFR  
SNACK PACK**  
12/4 PCK #411234



**CHIPS LSS COOLER  
RANCH DORITOS  
FRITO LAY**  
64/1.75 EA #443613



**CHIPS POTATO  
RUFFLES BULK  
FRITO LAY**  
8/16 OZ #440601



**CHIPS LSS POTATO  
VARIETY PK  
MISS VICKI**  
60/1.375 EA #443614



**BISCUITS ASSORTED  
CARRS**  
12/7.05 OZ #152535



**PRINGLES SOUR  
CREAM & ONION**  
12/1.4 OZ #441048



**PRINGLES  
CHEDDAR**  
12/1.4 OZ #441050



**PRINGLES  
ORIGINAL**  
12/1.4 OZ #441043



# DESSERTS

## CANDY

---



**CANDY GUMMY BEARS**  
HARIBO  
12/5 OZ #134413



**CANDY PEACHES**  
HARIBO  
12/5 OZ #134400



**CANDY MILKY WAY BARS**  
MARS  
36/2.05 OZ,  
#134409



**CANDY PEANUT BUTTER CUPS**  
REESES  
1/36 CT #134506

## INDIVIDUALLY WRAPPED TREATS

---



**FTD IW CHOC CHIP**  
UDIS COOKIE  
36/1.7 OZ #960651



**CHOCOLATE CHUNK T&S**  
DAVIDS COOKIE  
32/4 OZ #921029



**GTF IW CHOC CHIP**  
DAVIDS COOKIE  
24/3 OZ #921022



**BROWNIE SUSTAINABLE PERUVIAN CHOCOLATE**  
SWEET STREET  
48/2.88 OZ #920109



**MARSHMALLOW MANIFESTO BAR**  
SWEET STREET  
40/2.1 OZ #160578



**COOKIE IW CHOC CHUNK MANIFESTO**  
SWEET STREET  
48/3.02 OZ #160581

# MOJO™

## DESSERTS

ARTISANAL CHOCOLATE MOUSSE  
*made in small batches by a Belgian Chef in New York*

*Fresh and  
Simple*

*NO Artificial  
Ingredients*

*Naturally  
Delicious*



#236542  
6/3 OZ



# NON-FOODS

## CLEANING PRODUCTS

---



**CLEANER GLASS  
WINDEX**  
12/32 OZ #035832



**WINDEX W/ VINEGAR  
S.C. JOHNSON**  
8/23 OZ # 035837



**DISINFECTANT  
SANITIZER  
FANTASTIK**  
8/38 OZ, #501725



**WIPES DISINFECTING  
LYSOL**  
6/80 CT, #600612

---



**TOWEL ROLL WHITE  
DECOR**  
30/ROLLS #713001



**BLEACH 6.25%  
PURE BRIGHT 6/1 GAL**  
#770607



**FURNITURE POLISH  
AEROSOL  
DELTA**  
12/9 OZ #501640



**OVEN CLEANER  
AEROSOL  
DELTA**  
12/12 OZ #501602

---



**DETERGENT DISH  
LIQUID  
JOY**  
8/38 OZ #770625



**DETERGENT DISH  
LIQUID  
DAWN**  
8/38 OZ #721228



**DETERGENT DISH  
ANTIBACTERIAL  
PALMOLIVE**  
9/20 OZ #771226



**DETERGENT DISH  
LIQUID  
JOY**  
8/38 OZ, #770625

# BEVERAGES

## BAR SUPPLIES

---



**MIX BLOODY MARY**  
MRS T  
6/1 LT #130409



**MIX BANANA FROZEN**  
ISLAND OASIS  
12/32 OZ #252121



**MIX ICE CREAM**  
**FROZEN**  
ISLAND OASIS  
12/32 OZ #252113



**MIX PINA COLADA**  
ISLAND OASIS  
12/32 OZ #252115

---



**MIX RASPBERRY**  
**FROZEN**  
ISLAND OASIS  
12/32 OZ #252119



**MIX STRAWBERRY**  
**FROZEN**  
ISLAND OASIS  
12/32 OZ #252116



**BLACKBERRY PUREE**  
BOIRON 6/2.2 LB  
#845106



**MANGO PUREE**  
BOIRON  
6/2.2 LB #845014

---



**WHITE PEACH**  
**PUREE**  
BOIRON  
6/2.2 LB #845105



**RASPBERRY PUREE**  
BOIRON  
6/2.2 LB #845030



**PASSION FRUIT**  
**PUREE**  
BOIRON  
6/2.2 LB #845103

# BEVERAGES

<b>Item#</b>	<b>Description</b>	<b>Pack Size</b>	<b>Brands</b>
511211	COFFEE CLASSIC ROAST	6 / 11 OZ	FOLGER
252484	ICED TEA LEMON	30/6.3 OZ	FOLGERS
252489	ICED TEA LEMON DIET	24 / 16 OZ	SNAPPLE
252485	ICED TEA PEACH	24 / 11.5 OZ	SNAPPLE
252495	ICED TEA PEACH DIET	24 / 16 OZ	SNAPPLE
252487	ICED TEA RASPBERRY	24 / 16 OZ	SNAPPLE
251002	JUICE APPLE	24 / 16 OZ	SNAPPLE
253253	JUICE APPLE JJP	24 / 10 OZ	TROPICANA
252520	JUICE APPLE LEMON GINGER	12 / 32 OZ	MOTTS
252523	JUICE COCONUT HYDRATE	24/5.5 OZ	MOTTS
254807	JUICE CRANBERRY COCKTAIL	6/16 OZ	PURE GREEN
253252	JUICE CRANBERRY COCKTAIL	24 / 10 OZ	TROPICANA
252525	JUICE GINGERADE PURE	8 / 64 OZ	OCEAN SPRA
253250	JUICE LEMON	6/16 OZ	PURE GREEN
253256	JUICE LEMON	12 / 32 OZ	PACKER
132028	JUICE LEMON FROZEN	8 / 48 OZ	REAL
132026	JUICE LIME FROZEN	6 / 1 QT	LAMBETH
250700	JUICE ORANGE FRESH	12 / 32 OZ	PACKER
254602	JUICE TOMATO	12/46 OZ	RUBY KIST
252524	JUICE WAKE UP CALL	12 / 46 OZ	SACRAMENTO
415205	KOMBUCHA GINGER LEMON	12/16 OZ	HEALTH ADE
415206	KOMBUCHA ORANGE CARROT GINGER	12/16 OZ	HEALTH ADE
415203	KOMBUCHA POMEGRANATE	12/16 OZ	HEALTH ADE
415204	KOMBUCHA ROSE BUBBLY	12/16 OZ	HEALTH ADE

# BEVERAGES

<b>ITEM#</b>	<b>DESCRIPTION</b>	<b>PACK SIZE</b>	<b>BRAND</b>
241242	SODA CLASSIC COKE	24 / 20 OZ	COCA COLA
271004	SODA COCA COLA CANS COKE	12 / 12 OZ	COCA COLA
250634	SODA COKE	8 / 2 LT	COCA COLA
252060	SODA COKE MEXICAN	24 / 335 ML	COCA COLA
251284	SODA COLA	24 / 12 OZ	C&C
251286	SODA CREME	24 / 12 OZ	C&C
241243	SODA DIET COKE	24 / 20 OZ	COCA COLA
250635	SODA DIET COKE	8 / 2 LT	COCA COLA
271005	SODA DIET COKE CANS	12 / 12 OZ	COCA COLA
281018	SODA GINGER ALE GLASS BOTTLE	24/10 OZ	CANADA DRY
251296	SODA ORANGE CANS	24 / 12 OZ	C&C
251251	SODA ORANGE N CREAM BOTTLES	24 / 12 OZ	STEWARTS
251235	SODA ROOT BEER	24 / 12 OZ	STEWARTS
251297	SODA ROOT BEER	24 / 12 OZ	C&C
250636	SODA SPRITE	8 / 2 LT	COCA COLA
251259	SODA SPRITE	24 / 20 OZ	COCA COLA
271006	SODA SPRITE DIET ZERO	12 / 12 OZ	COCA-COLA
251253	SODA SPRITE GLASS BOTTLE	24 / 8 OZ	COCA COLA
252061	SODA SPRITE MEXICAN	24 / 335 ML	SPRITE
271007	SODA SPRITE SODA CANS	12 / 12 OZ	COCA COLA
510689	TEA ENGLISH TEATIME	6/20 CT	AHMAD
252490	TEA ICED LEMON	24/20 OZ	SNAPPLE
252492	TEA ICED PEACH	24/20 OZ	SNAPPLE
582423	WATER SPARKLING LIMONATA	24/330 ML	SAN PELLEGRINO
252048	WATER SPARKLING RASPBERRY LIME	24/12 OZ	SPINDRIFT