



# pizzeria

MENU GUIDE



# contents

- 1 THE BASICS
- 2 THE SAUCE
- 3 THE CHEESE
- 4 THE TOPPINGS
- 6 THE MEATS
- 8 WINGS & TENDERS
- 10 BREADS & SIDES
- 11 PASTA
- 12 THE APPS
- 13 THE ENTREES
- 14 COFFEE & DESSERT
- 15 TAKEOUT ESSENTIALS



# THE basics

## THE DOUGH

201001	FLOUR ALL PURPOSE	GOLD MEDAL	1/25 LB
205032	FLOUR DOUBLE ZERO	CAPUTO	1/55 LB
205018	FLOUR DOUBLE ZERO	CAPUTO	10/1 KILO
205010	FLOUR HI GLUTEN ALL TRUMP	GOLD MEDAL	1/50 LB
205004	FLOUR HI GLUTEN BALANCER	PILLSBURY	1/50 LB
205019	FLOUR PATENT BAKER'S BEST	PILLSBURY	1/50 LB
432003	SEA SALT FINE	ROLAND	12/26.5 OZ
082207	YEAST INSTANT DRY	FLEISCHMAN	20/1 LB

## OILS & VINEGARS

350648	OIL COOKING LA PADELLA	CORTO	1/10 LTR
350650	OIL OLIVE EXTRA VIRGIN	CORTO	1/10 LTR
350649	OIL OLIVE X-VIR 51% CANOLA 49%	CORTO	1/10 LTR
351013	OIL SESAME 100% PURE	DEL DESTINO	10/56 OZ
350614	TRUFFLE OIL WHITE	ROLAND	6/8.4 OZ
350641	TRUFFLE OIL WHITE PLASTIC	DALLEANDR	1/1 GAL
550417	VINEGAR RED WINE	ROLAND	4/5 LITER
551203	VINEGAR SHERRY	ROLAND	12/25.4 OZ
550509	VINEGAR BALSAMIC	ROLAND	2/5 LT
551213	VINEGAR WHITE WINE	ROLAND	12/16.9 OZ

## FROZEN DOUGH & CRUST

893402	PIZZA DOUGH BALL 10 OZ	LOSURDO	36/10 OZ
893403	PIZZA DOUGH BALL 20 OZ	LOSURDO	20/20 OZ
934803	PIZZA DOUGH 7 SHEETED	RICH'S	96/5.5 OZ
471532	PIZZA DOUGH 12X16 SHEETED	RICH'S	22/24 OZ
471664	PIZZA DOUGH 16 ROUND OVEN RISING	RICH'S	20/29.5 OZ
471528	PIZZA DOUGH 16 ROUND SHEETED	RICH'S	20/26 OZ
931803	PIZZA DOUGH BALL 9OZ	RICH'S	48/9 OZ
471545	PIZZA DOUGH BALL 26OZ	RICH'S	20/26 OZ
471537	PIZZA CRUST 7 PB RAISED EDGE	RICH'S	48/4.7 OZ
960653	PIZZA CRUST 10 PB GTF	RICH'S	20/5.1 OZ
471527	PIZZA CRUST 10 PARB THIN	ULTRA THIN	50/10
471552	PIZZA CRUST 10 PB RAISED EDGE	RICH'S	20/10
471526	PIZZA CRUST 12 PB GTF	UDI'S	20/9.7 OZ
471522	PIZZA CRUST 12 THIN PARB	ULTRA THIN	50/12
471540	PIZZA CRUST 16 PB RAISED EDGE	RICH'S	10/22.5 OZ
471500	PIZZA CRUST 16 PB TRADITIONAL	RICH'S	14/18OZ
471539	PIZZA CRUST PB 12X16	RICH'S	16/17 OZ
125698	CAULIFLOWER PIZZA CRUST GTF 10"	CAULIPOWER	4/6 CT
125699	CAULIFLOWER PIZZA CRUST GTF 12"	CAULIPOWER	24/9 OZ

## SPICES & HERBS

481412	BAY LEAVES WHOLE	EMERALD	6/1 LB
481310	GARLIC GRANULATED	MCCORMICK	6/26 OZ
485066	GARLIC POWDER	MCCORMICK	6/21 OZ
481311	ONION GRANULATED	MCCORMICK	6/18 OZ
485070	ONION POWDER	MCCORMICK	6/20 OZ
481401	OREGANO LEAVES	MCCORMICK	3/1.5 LB
481011	PAPRIKA	MCCORMICK	3/5.25 LB
109741	PEPPER RED CRUSHED	MCCORMICK	6/13 OZ
481333	PEPPER BLACK WHOLE	EMERALD	4/5 LB
480425	PEPPERCORNS GREEN BRINE	ROLAND	24/8.82 OZ
481258	MARJORAM	EMERALD	4/1 LB
480101	SAFFRON FROM SPAIN	AMBROSIA	1/1 OZ
482172	THYME GROUND	EMERALD	12/11 OZ

# THE SAUCE



## A LITTLE DRIZZLE

### BALSAMIC GLAZE

FIG BALSAMIC GLAZE | #400684 | ROLAND | 6/12.9 OZ

### PESTO

BASIL PESTO NO NUTS BULK | #940200 | ARMANINO | 1/38 LB2  
 PESTO BASIL SAUCE NO NUTS | #940201 | ARMANINO | 6/30 OZ  
 PESTO ROASTED RED BELL PEPPER | #940202 | ARMANINO | 3/30 OZ

### CHEESE SAUCE

WHITE CHEESE SAUCE | #330217 | LAND O LAKES | 2/7 LB

## FROM SCRATCH

520610	TOMATO CRUSHED SUPER TERESA	RED GOLD/TERESA	6/#10
520625	TOMATO DICED IN JUICE	FULL RED	6/#10
520602	TOMATO GROUND 7/11	STAN 7/11	6/#10
520673	TOMATO GROUND MAGIC	TOMATO MAGIC	6/#10
520669	TOMATO ITALIAN PEELED WHOLE	CENTO	6/10 LB
520601	TOMATO ITALIAN WHOLE PEELED	CARMELINA	6/91 OZ
520633	TOMATO PASTE FULL RED	FULL RED	6/#10
520604	TOMATO PUREE	FULL RED	6/#10
520609	TOMATO PUREE	SUZY BELL	6/#10
520612	TOMATO PLUM WHOLE ALTA CUCINA	ALTA CUCINA	6/#10
852706	TOMATO ROASTED RED USA	WHITE TOQUE	4/2.5 LB
520617	TOMATO STRIP FILETTO POMODORO	SAPORITO	6/#10
520603	TOMATO STRIPS 74-40	74-40	6/#10
031119	TOMATO SUNDRIED HALVES	DEL DESTINO	4/5 LB
520668	TOMATO WHOLE PEELED	LAVALLE	6/#10
521203	TOMATO WHOLE PEELED ITALIAN	CIAO	6/#10 CAN
520664	TOMATO WHOLE PEELED VALOR	VALOROSO	6/#10

## PREPARED

520671	AL DENTE U/P PASTA SAUCE	AL DENTE	6/#10
520634	MARINARA SAUCE	FULL RED	6/#10
520620	PIZZA SAUCE	FULL RED	6/#10
520662	PIZZA SAUCE PIZZOLA	PIZZAIOLO	6/10 LB
520640	PIZZA SAUCE SAPORITO	SAPORITO	6/#10
520658	SAUCE SPAGHETTI TRATTORIA	TRATTORIA	6/#10
520618	TOMATO SAUCE FULL RED	FULL RED	6/#10
940332	PIZZA SAUCE JERSEY TOMATOES	DON PEPINO	6/#10

## SAUCING GUIDE

PIZZA SIZE	16 INCH	14 INCH	12 INCH	10 INCH	7 INCH
SAUCE	6 OUNCES	5 OUNCES	4 OUNCES	2 OUNCES	1.5 OUNCES

# THE cheese

## MOZZARELLA

030303	CHEESE MOZZARELLA CURD PLATINUM	BELGIOIOSO	2/20 LB
030636	CHEESE MOZZARELLA THIN SLICED LOG	BELGIOIOSO	8/1 LB
030650	CHEESE MOZZARELLA CILIEGINE	NONNA'S	2/3 LB
030610	CHEESE MOZZARELLA FRESH 1LB	NONNA'S	2/3 LB
031370	CHEESE MOZZARELLA FRESH LOAF	NONNA'S	2/5 LB
030607	CHEESE MOZZARELLA FRESH SLICED	BELGIOIOSO	8/1 LB
030666	CHEESE MOZZARELLA LOAF FRESH	BELGIOIOSO	2/5 LB
035007	CHEESE MOZZARELLA LOAF WM	DRAGONE	8/6 LB
031348	CHEESE MOZZARELLA OVOLINI 4OZ	NONNA'S	2/3 LB
030620	CHEESE MOZZARELLA PEARLS FRESH	BELGIOIOSO	12/8 OZ
031405	CHEESE MOZZARELLA SHREDDED	LAND O LAKES	4/5 LB
034416	CHEESE MOZZARELLA SHREDDED WM	SAPUTO GOLD	6/5 LB
031256	CHEESE BURRATA 2 OZ.PIECES	BELGIOIOSO	6/8 OZ
031247	CHEESE BURRATA 2-4OZ	BELGIOIOSO	6/8 OZ

*new!*

430244	CHEESE MOZZARELLA LOAF WM	PATRIA	8/6 LB
430254	CHEESE MOZZ DICED 50/50 NY	PATRIA	4/5 LB
430234	CHEESE MOZZ SHRED 50/50 NY	PATRIA	4/5 LB
430274	CHEESE MOZZARELLA LOAF PS	PATRIA	8/6 LB
430284	CHEESE MOZZARELLA SHRED PS	PATRIA	4/5 LB
430214	CHEESE MOZZARELLA SHRED WM	PATRIA	4/5 LB

## PARMESAN & RICOTTA

031036	CHEESE PARMESAN SHAVED	BELGIOIOSO	4/5 LB
035023	CHEESE RICOTTA SALATA	ZERTO	4/7 LB
030604	CHEESE RICOTTA WHOLE MILK	PACKER	6/3 LB

## MORE CHEESE

030302	CHEESE BLEND SALAD SHAVED	BELGIOIOSO	2/5 LB
031502	CHEESE BLUE CRUMBLD	STELLA	4/5 LB
030207	CHEESE BRIE PLAIN	PRESIDENT	2/2 LB
031406	CHEESE CHEDDAR MILD SHREDDED	LAND O LAKES	4/5 LB
033509	CHEESE FETA CRUMBLES	STELLA	4/2.5 LB
030559	CHEESE FONTINA	BELGIOIOSO	2/6 LB
031124	CHEESE FONTINA DANISH	ST CLEMENS	1/15 LB
031210	CHEESE GOAT LOG	CELEBRITY	2/2.2 LB
030217	CHEESE GORGONZOLA CRUMBLE	BELGIOIOSO	4/5 LB
030405	CHEESE GOUDA LOAF	AMMERLANDER	4/6.5 LB
030203	CHEESE GOUDA SMOKED LOG	DUTCH MILL	4/6 LB
030233	CHEESE GRUYERE LOAF	AMMERLANDER	2/6.5 LB
030204	CHEESE GRUYERE SWISS	MIFROMA	2/6 LB
030243	CHEESE MANCHEGO	DON JUAN	2/7 LB
031025	CHEESE MASCARPONE	BELGIOIOSO	6/1 LB
031036	CHEESE PROVOLONE HALVES	BELGIOIOSO	2/6 LB



# THE TOPPINGS



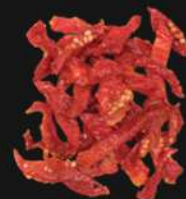
fire roasted  
red peppers  
Roland 6/88.2 oz., #391210  
12/28 oz, #391202



whole sweet  
peppadews, mild  
Peppadew, 2/#10  
item #860384



roasted red  
pepper strips  
Roland, 6/#10  
item #391209



sundried tomato  
strips  
Del Destino, 4/5 lb  
item #031117



red & green sweet  
pepper strips  
B&G, 4/1 gal  
item #390606



hot cherry  
peppers sliced  
Cosmos, 4/1 gal  
item #390421



sweet cherry  
peppers  
Cosmos, 4/1 gal  
item #390443



grilled mixed  
vegetables  
White Toque, 4/2.2 lb  
item #942429



flame roasted  
peppers & onions  
Simplot, 6/2.5 lb  
#833088



artichoke hearts  
quartered  
Ruby 6/3 kg  
item #530603



artichoke hearts  
Roland, 6/88 oz  
item #530591



banana ring  
peppers  
Casa Diva, 4/1 gal  
item #031114



pepperoncini  
sliced  
Del Destino, 2/1 gal  
item #390410



pepperoncini  
Del Destino, 4/1 gal  
item #390430



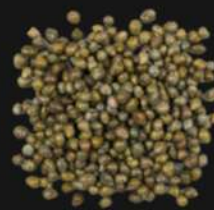
sliced jalapenos  
Casa Diva, 6/#10  
item #390602



caper berry  
Del Destino, 6/64 oz  
item #391206



caper capote  
Del Destino, 6/32 oz  
item #031116



caper non-pariel  
Packer, 6/32 oz  
item #391203



castelvetrano  
olives  
Frutto, 2/4.4 lb  
item #360629



olives black  
pitted  
Packer, 6/10#  
item #360603



olives black  
sliced  
Packer, 6/10#  
item #360604



country pitted  
olives  
Roland, 6/2 kg  
item #362404



olives green  
pitted  
Silano, 1/8.8 lb  
item #090473

# PROTEIN

**ANCHOVIES** 031047 | ANCHOVIES FLAT FILLETS IN SOY OIL | WHITE CROWN | 24/28 OZ

**BACON**  
 008200 | BACON 14/18 LAYOUT | HATFIELD | 1/15 LB  
 008148 | BACON APPLEWOOD SMOKED | HATFIELD | 1/15 LB  
 400302 | BACON BITS 1/4" SMOKED FLAVOR | SMITHFIELD | 2/5 LB  
 008243 | BACON SLICED SLAB THICK | HATFIELD | 1/15 LBA  
 400300 | BACON TOPPING 1/2" COOKED | HORMEL | 2/5 LB

**BEEF**  
 007930 | BEEF SANDWICH RIBEYE MARINATED | B&M MEATS | 20/8 OZ  
 150470 | BEEF SLICES SAVORY SANDWICH | EMERALD | 27/6 OZ  
 150474 | BEEF SLICES ULTIMATE | EMERALD | 20/8 OZ

**CHICKEN**  
 091009 | CHICKEN BREAST BONELESS CLIP BAG | MOUNTAIRE | 4/10 LB  
 410350 | CHICKEN BREAST BRD FILLET | GARIMARK | 2/5 LB  
 411100 | CHICKEN BREAST BREADED 944 | TYSON | 40/4 OZ  
 410522 | CHICKEN BREAST FILLET GRILLED | TYSON | 2/5 LB  
 400134 | CHICKEN BREAST FILLET GRILLED | TYSON | 40/4 OZ  
 410520 | CHICKEN BREAST FILLET ITALIAN | TYSON | 34/4.7 OZ  
 410305 | CHICKEN BREAST FILLET ITALIAN BRD FC | GARIMARK | 2/5 LB  
 410527 | CHICKEN BREAST GOLDEN CRISP CKD | TYSON | 46/3.5 OZ  
 410524 | CHICKEN BREAST STRIPS GRILLED CKD | TYSON | 2/5 LB  
 091235 | CHICKEN PULLED BBQ | HORMEL | 2/5 LB  
 822001 | CHICKEN PULLED WHITE DARK COOKED | TYSON | 2/5 LB  
 150473 | CHICKEN SLICES MARINATED | EMERALD | 20/8 OZ  
 150471 | CHICKEN SLICES MARINATED | EMERALD | 40/4 OZ

**CHORIZO**  
 030395 | CHORIZO DRIED | VOLPI | 3/48 OZ  
 009502 | CHORIZO SAUSAGE LINK SMOKED | ARNOLD | 14/2.5 LB

**PEPPERONI**  
 918003 | PEPPERONI SLICED | NONNA'S | 1/10 LB  
 918002 | PEPPERONI SLICED CUP & CHAR | SWISS AMERICAN | 1/10 LB  
 091809 | PEPPERONI GRANDE 4 CT | HORMEL | 4/5.5 LB  
 092001 | PEPPERONI SLICED FOR PIZZA 16CT | HORMEL | 2/5 LB  
 090541 | PEPPERONI SLICED BULK | FARMLAND | 1/10 LB

**PORK**  
 891806 | PORK CARNITAS COOKED | HORMEL | 6/5 LB  
 091229 | PORK PULLED BBQ IN SAUCE | HORMEL | 2/5 LB  
 091228 | PORK PULLED BBQ NO SAUCE | HORMEL | 2/5 LB  
 091804 | PORK ROLL FRESH | HATFIELD | 3/6-7 LB

**SAUSAGE**  
 918001 | SAUSAGE ITALIAN CRUMBLES FC | NONNA'S | 2/5 LB  
 918005 | SAUSAGE SWEET ITALIAN SLICED FC | NONNA'S | 2/5 LB  
 870604 | SAUSAGE ITALIAN COOKED FOR PIZZA | HORMEL | 2/5 LB

# FRESH VEGETABLES

107490 | ARTICHOKE FRESH | 1/20 LB  
 109882 | BABY ARUGULA | 1/3 LB  
 750900 | BROCCOLI RABE | 1/20 CT  
 751091 | CAULIFLOWER | 1/12 CT  
 751244 | EGGPLANT | 1/18 CT  
 752572 | FRISEE ITALIAN | 1/3 LB  
 109901 | MUSHROOM SLICED | 1/10 LB  
 109855 | PEPPER JALAPENO | 1/40 LB  
 109703 | PEPPER LONG HOT GREEN | 1/20 LB  
 751466 | PEPPER RED | 1/5 LB  
 751467 | RED ONION | 1/5 LB  
 109736 | SPINACH CLIPPED/CLEANED | 4/2.5 LB  
 109826 | TOMATO BEEFSTEAK TRAYED | 1/18-27 CT  
 755555 | TOMATO MIX HEIRLOOM CHERRY | 12/PT



THE  
**toppings**

**PLANT-BASED**

**CHORIZO CRUMBLES FC**

VEGETARIAN # 918006 | NONNA'S | 2/5 LB

# ITALIAN MEATS

## PANCHETTA

PANCETTA SMALL HALF, FRATELLI  
BERETTA #141505, 4/3 LB

PANCETTA DICED, FRATELLI BERETTA  
#141508, 1/10 LB

---

## PASTRAMI

PASTRAMI FULL NAVEL,  
BROOKLYN #090769, 5/5-6 LBA

---

## PROSCIUTTO

PROSCIUTTO ITALIANO 14MTH,  
SILANO #090562, 1/15 LBA

PROSCIUTTO ITALIANO IMPORT  
BOSCHI #231461, 1/13 LB

PROSCIUTTO DI PARMA 14MTH,  
BOSCHI #231459, 1/16.5 LB

PROSCIUTTO SLICED, FRATELLI  
BERETTA #141525, 10/1 LB

---

## SALAMI

GENOA SALAMI, DILUSSO  
#918211, 4/8.5 LBA

GENOA SALAMI, MAGNIFICO  
#091801, 4/5.5 LB

BEEF SALAMI, HATFIELD  
#936018, 2/7 LBA



# THE meats





# DELI MEATS

## HAM

---

HAM CURE 81 BONELESS  
#091220, 4/8-9 LBA, HORMEL

HAM CVF COOKED 39% AI  
#093604, 2/11 LBA, HATFIELD

HAM SMOKED FLEUR DI LIS  
#091265, 2/12.5 LB. HORMEL

## TURKEY

---

TURKEY BREAST BROWNED  
#099109, 2/8.5 LB BUTTERBALL

TURKEY BREAST, FIRE BRAISED  
#009860, 2/5-77 LBA, HORMEL

TURKEY BREAST NATURALLY ROAST  
#413315, 2/8.5 LB, JUST PERFECT

TURKEY BREAST OIL BRAISED FC  
#009811, 2/9.25 LB, MICHIGAN TURKEY

TURKEY BREAST OVEN BROWNED  
#009450, 2/8.5 LBA, MICHIGAN TURKEY

TURKEY BREAST, OVEN ROASTED FC  
#009498, 2/10 LBA, MICHIGAN TURKEY

TURKEY BREAST, OVEN ROASTED LRS  
#009813, 4/4.8 LBA, GOLDEN LEG

TURKEY BREAST ROAST AND SERVE  
#918216, 2/9 LBA, JUST PERFECT

TURKEY BREAST, WHITE SKINLESS  
#090910, 2/10 LBA, CAROLINA

TURKEY HAM, SMOKED DELUXE  
#806045, 2/7.5 LBA, CAROLINA

# THE WINGS

## & TENDERS

### WINGS

094005	CHICKEN WINGS IQF RAW LARGE	TYSON	6/5 LB
410416	CHICKEN WINGS DISJOINTED CVP	MOUNTAIRE	4/10 LB
410422	CHICKEN WINGS JUMBO BRD FC	TYSON	3/5 LB
821507	CHICKEN WINGS SMALL DISJOINTED	MOUNTAIRE	4/10 LB
094010	CHICKEN WINGS STEAMED SECTIONS	OK FOODS	2/5 LB
094002	CHICKEN WINGS JUMBO DISJOINTED	PACKER	4/10 LB

### TENDERS

410093	CHICKEN BREAST CHUNK FRITTER FC	TYSON	1/10 LB
410301	CHICKEN BREAST FRITTER CHUNK	GARIMARK	2/5 LB
410032	CHICKEN BREAST TENDER FRITTER	TYSON	2/5 LB
821009	CHICKEN TENDER BRANDYWINE	TYSON	2/5 LB
410408	CHICKEN TENDER BREADED W/RIB MEAT	TYSON	2/5 LB
410590	CHICKEN TENDER FRITTER FC	TYSON	1/10 LB
410542	CHICKEN TENDER FRITTER HOMESTYLE	TYSON	2/5 LB
410593	CHICKEN TENDER FRITTER NAE	TYSON	80/2 OZ
410023	CHICKEN TENDER PREMIUM W/RIB MEAT	TYSON	2/5 LB
410443	CHICKEN TENDERLOIN FRITTER	OK FOODS	2/5 LB
009724	CHICKEN TENDERS CVP FRESH	MOUNTAIRE	4/10 LB



# get saucy

## WING SAUCE

460420	SAUCE BBQ CANNONBALL	KENS	4/1 GAL
160512	SAUCE BBQ ORIGINAL	SWEETBABY	4/1 GAL
160962	SAUCE BOOM BOOM	KENS	4/1 GAL
410404	SAUCE HOT PLASTIC FRANK'S	FRANK'S	4/1 GAL
390454	SAUCE HOT LOUISIANA	TRAPPEY'S	4/1 GAL
160540	SAUCE JAMAICAN JERK WING	SWEETBABY	4/64 OZ
160572	SAUCE MANGO HABANERO	SWEETBABY	4/64 OZ
162630	SAUCE TERIYAKI SWEET	SWEETBABY	4/64 OZ
390457	SAUCE BUFFALO WING COMPLETE	TRAPPEY'S	4/1 GAL
461206	SAUCE BUFFALO WING W/ BTR	FRANKS	4/1 GAL
160518	SAUCE WING BUFFALO	SWEETBABY	4/1 GAL
160096	SAUCE WING GARLIC PARMESAN	SWEETBABY	4/64 OZ

## DRESSING

166003	DRESSING BALSAMIC VIN PC	KENS	60/1.5 OZ
160955	DRESSING BALSAMIC VINEGAR	KENS	4/1 GAL
160777	DRESSING BUTTERMILK RANCH	KENS	4/1 GAL
162025	DRESSING CAESAR PC	KENS	60/1.5 OZ
160510	DRESSING CAESAR TABLESIDE 814	KENS	4/1 GAL
160956	DRESSING CREAMY CAESAR	KENS	4/1 GAL
162032	DRESSING CREAMY FRENCH PC	KENS	60/1.5 OZ
160493	DRESSING GOLDEN ITALIAN PC	KENS	60/1.5 OZ
160055	DRESSING HOMESTYLE RANCH	KENS	100/1.5 OZ
160061	DRESSING HONEY DIJON	KENS	60/1.5 OZ
160468	DRESSING HONEY MUSTARD	KENS	4/1 GAL
160038	DRESSING HONEY MUSTARD	KENS	100/1 OZ
162027	DRESSING ITALIAN FFR PC	KENS	60/1.5 OZ
162021	DRESSING ITALIAN LITE PC	KENS	60/1.5 OZ
160500	DRESSING RASPB VING FFR	KENS	60/1.5 OZ
160417	DRESSING RUSSIAN DELUXE	KENS	4/1 GAL
162020	DRESSING THSD ISLAND DELUX	KENS	60/1.5 OZ

## DIPPING SAUCE

166064	SAUCE HONEY MUSTARD	KEN'S	4/1 GAL
160039	DRESSING BLUE CHEESE CUPS	KEN'S	100/1.5 OZ
162026	DRESSING BLUE CHEESE DELUX	KEN'S	60/1.5 OZ
160084	DRESSING RANCH CUPS	KEN'S	100/1 OZ
160776	DRESSING RANCH	KEN'S	4/1 GAL
160070	DRESSING RANCH LITE	KEN'S	100/1.5 OZ
162023	DRESSING RANCH PC	KEN'S	60/1.5 OZ



**RIBEEZ**  
**PORK WING, FULLY COOKED**  
**#091238, 1/11 LB**



## BREADS

120292	BAGUETTE PB FRENCH DEMI	TRIBECA	1/60 CT
965113	BUN BRIOCHE CRAB CAKE 2.25OZ	LE BUS	96/2.25 OZ
920755	BUN BRIOCHE UNSLI RND ROLL T&S	LE BUS	72/3.4OZ
960684	BUN HOT DOG BRIOCHE T&S	LE BUS	72/3OZ
960562	ROLL CIABATTA RUSTIC HERO	TRIBECA	60/3.9 OZ
932643	ROLL KAISER MEDIUM 3.75"	COSTANZO'S	6/12 CT
932647	ROLL SUB WHITE 8" SLICED	COSTANZO	1/48 CT
932708	LOAF BREAD CIABATTA 12.75" - 15.5"	TRIBECA	15/16.6 OZ
965112	LOAF BRIOCHE SLICE 3/4"	LE BUS	5/EA
120293	BREAD FOCACCIA 14-15.5"L 21.3OZ	TRIBECA	14/22.4 OZ
120295	BREAD FOCACCIA HERB 1/4 SHEET	TRIBECA	14/22.4 OZ

## FLATBREAD

831812	FLATBREAD 5X14" OVEN FIRED	ITALCRUST	24/5.3 OZ
681138	FLATBREAD CRUST 12X5	DAMASCUS	4/12 CT
012075	FLATBREAD OVAL 12X5	RICH	48/4.8 OZ
931228	FLATBREAD HERB PB SQUARE	RICH	120/3.3 OZ

## BREADSTICKS

731254	BREADSTICKS GARLIC 6"	MARZETTI	1/12.5 LB
942582	BREADSTICK GARLIC 7" T&S	ALL ROUND	120/1.75 OZ
866067	BREADSTICK CHEESE STUFFED WGR	SCHWAN	200/2.1 OZ

## WRAPS

940106	WRAP 6 VARIETY 12"	EMERALD FARMS	6/12 CT
940103	WRAP PESTO HERB GARLIC 12"	EMERALD FARMS	6/12 CT
940107	WRAP PLAIN GTF 10"	EMERALD FARMS	10/10 CT
940104	WRAP SPINACH 12"	EMERALD FARMS	6/12 CT
940105	WRAP SUN DRIED TOMATO 12"	EMERALD FARMS	6/12 CT
940101	WRAP WHITE FLOUR 12"	EMERALD FARMS	6/12 CT
940102	WRAP WHOLE WHEAT 12"	EMERALD FARMS	6/12 CT

## RICE & GRAINS

420606	COUSCOUS	ROYAL	1/10 LB
421015	COUSCOUS ISRAELI TOASTED	AMBROSIA	4/5 LB
031111	FARRO ITALIAN PEARLED	AGRIBOSCO	12/1 LB
205046	POLENTA	ROLAND	4/5 LB
205049	POLENTA MED QUICK COOK	ROLAND	12/8.8 OZ

# bread & sides



# pasta



cavatappi

DeCecco, 4/5 lb  
#370180



egg pappardelle

DeCecco, 12/8.8 oz  
#371027



elbow

DeCecco, 20/1 lb  
#371097



farfalle

DeCecco, 4/5 lb  
#370174



fettucini

DeCecco  
#372113, 4/5 lb | Nest #372096, 12/8.8 oz



fusilli

DeCecco, 4/5 lb  
#371030



fusilli

Luigi Vitel, 20/1 lb  
#372124



linguine 1/4

Severino, 1/10 lb  
#371332



linguine #7

DeCecco, 4/5 lb  
#370173



mezza rigatoni

DeCecco, 4/5 lb  
#370178



orecchiette

DeCecco, 4/5 lb  
#372088



penne rigate

DeCecco, 4/5 lb  
#370175



rigatoni

DeCecco, 12/1 lb  
#371114



spaghetti

DeCecco, 4/5 lb  
#370177



jumbo cheese ravioli

Bruno, 100/1.2 oz  
#860233



butternut squash ravioli

Talluto, 2/4 lb  
#681292



burrata rustico ravioli

Talluto, 112/1.2 oz  
#371273



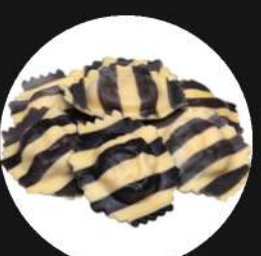
lobster ravioli

Sevirol, 2/2.5 lb  
#731301



maine lobster ravioli

Rana, 2/3 lb  
#371266



striped lobster ravioli

Joseph's, 2/3 lb  
#371305



grilled vegetable ravioli

Joseph's, 2/3 lb  
#037129

# ravioli



**BREADED BROCCOLI CHEDDAR BITES**  
#801603, 6/2.5 LB



**MAC & CHEESE WEDGES**  
#801601, 6/3 LB



**BREADED MUSHROOM**  
#801602, 6/2.5 LB



**CORN R'BZ BATTERED APPETIZER**  
#801645, 4/4 LB



**BREADED ZUCCHINI STICKS**  
#861010, 6/2 LB



**BREADED DILL PICKLE SPEARS**  
#801614, 4/4 LB



**BATTERED CAULIFLOWER**  
#801502, 6/48 OZ



**BREADED CHEDDAR CHEESE CURDS**  
#801638, 2/5 LB



**TEMPURA BATTERED PICKLE CHIPS**  
#700287, 4/2 LB



**TOASTED GREEN BEANS**  
#994996, 6/2 LB

## MOZZARELLA STICKS

801500	MOZZARELLA STICK BIG 4.75 IN	BIG MOZZ	6/2 LB
861003	MOZZARELLA STICK BREADED ITALIAN	STARTING LINE	6/2 LB
801513	MOZZARELLA STICK ITALIAN BREADED	ANCHOR	6/4 LB
801703	MOZZARELLA STICK TRUFFLER	MAD MUTZ	50/1.75 OZ
801708	MOZZARELLA STICK CHIMICHURRI	MAD MUTZ	50/1.75 OZ
801712	MOZZARELLA STICK HOT HONEY	MAD MUTZ	50/1.75 OZ
801701	MOZZARELLA STICK CACIO PEPE	MAD MUTZ	50/1.75 OZ
801704	MOZZARELLA STICK JALAPENO POPPER	MAD MUTZ	50/1.75 OZ

## ONIONS RINGS

890274	ONION RING 3/8 BATTERED OVEN	MOORES	6/2.5 LB
700382	ONION RING 5/8 BATTERED BEER	ALE HOUSE	4/2.5 lb
700299	ONION RING 5/8 JERSEY SHORE	CAVENDISH	6/2.5 LB
801615	ONION RING 5/8" BRD GOURMET	TANTALIZER	8/2 LB
890269	ONION RING 5/8" BREW CITY ZTF	BREW CITY	6/2.5 LB
700386	ONION RING BATTERED 3/8	PACKER	4/2.5 lb
930433	ONION RING BEER BATTERED	GOLDEN CRISP	6/2.5 LB
190967	ONION RING BRD EXTRUDED	PACKER	8/2 LB
700383	ONION RING GOURMET BREADED 5/8	PACKER	4/2.5 LB

## FRIES

833030	FRIES 1/4" SHOESTRING COATED	6/4.5 LB	LAMB WESTON
833006	FRIES 1/4" SHOESTRING COLOSSAL	6/4.5 LB	LAMBWESTON
833142	FRIES 1/4" SHOESTRING SKIN ON	6/4.5 LB	LAMBWESTON
700266	FRIES 3/8 PXL SURECRISP COATED	6/5 LB	MCCAIN
833027	FRIES 3/8 SC COLOSSAL CRISP	6/5 LB	LAMB WESTON
833154	FRIES 3/8 SC INCREDICRISP	6/5LB	MCCAIN
949003	FRIES 3/8 SC OVATIONS RS	6/5 LB	MCCAIN
700186	FRIES 3/8 SC SUPREME	6/5 LB	LAMB WESTON
833165	FRIES 3/8" SC BATTERED	6/4.5 LB	SNOWFLAKE
833052	FRIES 3/8" STRAIGHT SKIN ON	6/5 LB	STEALTH
833168	FRIES 3/8" SWEET POTATO SC	5/3 LB	LAMBWESTON
832995	FRIES 5/16 SURE CRISP SKIN-ON	6/5 LB	MCCAIN
700288	FRIES POTATO DIPPERS	6/4 LB	LAMB WESTON
700264	FRIES SEASONED SPIRALS CURLY	6/4 LB	MCCAIN
833145	FRIES STEAK CUT 3/8X3/4 XL	6/5 LB	MCCAIN
833114	FRIES STEAK XL 3/4X3/8" FANCY	6/5 LB	LAMB WESTON
530674	FRIES SWEET 1/4X1/2 PLATTER	5/3 LB	LAMB WESTON
833157	FRIES SWEET 3/8" XL POTATO	6/2.5 LB	MCCAIN
833064	FRIES SWEET POTATO 5/16" THIN	6/2.5 LB	MCCAIN
800255	FRIES WAFFLE SEASONED	6/4.5 LB	LAMB WESTON
409557	FRIES WAFFLE SWEET POTATO	6/2.5 LB	MCCAIN
833067	FRIES WAFFLE(CROSSTRAX) SEASON	6/4.5 LB	MCCAIN
700229	FRIES WEDGE 8-CUT SKIN ON	6/5 LB	MCCAIN

# THE apps

# THE entrees



## POULTRY

091009	CHICKEN BREAST BONELESS CVP FRESH	4/10 LB	MOUNTAIRE
009745	CHICKEN BREAST FIRE BRAISED 4OZ FROZEN	2/5 LBA	HORMEL
410054	CHICKEN BREAST 4OZ IQF MARINATED	1/10 LB	TYSON
191010	CHICKEN BREAST BLACK LABEL FROZEN	4/10 LB	MOUNTAIRE
410048	CHICKEN BREAST 5OZ IQF	1/10 LB	TYSON
009332	CHICKEN THIGHS BNLS FIRE BRAISED	1/9 LBA	HORMEL
009643	CHICKEN THIGHS BNLS SKINLESS FRESH	1/40 LBA	MOUNTAIRE

## PORK

870519	PORK BUTT BONE IN 2/BAG	6/7#AVG	PACKER
870526	PORK BUTT BONELESS FRESH	3/2/PC	PACKER
008370	PORK RACK CHOP PREMIUM RESERVE	12/14 OZ	DRISCOLL
870514	PORK LOIN CHOPS BONE IN CENTER CUT	20/4 OZ	DRISCOLL
008364	PORK LOIN BONE/IN (CRYO)	4/18/22 LB	HATFIELD
017815	PORK SHANKS (OSSO/BUCCO) FRZ	2/8 CT	HATFIELD
008372	PORK SHOULDER BONE IN	1/40 LB	HATFIELD

## VEAL

963025	VEAL CUBES FOR STEW FROZEN	2/5 LB	CATELLI
963037	VEAL GROUND FINE FROZEN	5/2 LB	CATELLI
963029	VEAL LEG CUTLET	40/4 OZ	CATELLI
870335	VEAL LOIN TRIMMED 4X4	2/10 LBA	CATELLI
415706	VEAL PATTY BREADED	40/4 OZ	CATELLI
009851	VEAL TOP ROUND CAP OFF	2/5 LBA	CATELLI
009706	VEAL TOP ROUND CUTLET	40/4 OZ	CATELLI

## MEATBALLS

413350	MEATBALL BEEF CKD	320/.5 OZ	NONNA'S
413355	MEATBALL ALL BEEF CKD	160/1 oz	NONNA'S
413340	MEATBALL ALL BEEF CKD	80/2 OZ	NONNA'S
413360	MEATBALL BEEF & PORK CKD	160/1 OZ	NONNA'S
413365	MEATBALL BEEF & PORK CKD	80/2 OZ	NONNA'S
413331	MEATBALL CHICKEN & BEEF	160/1 OZ	BUONA VITA
413310	MEATBALLS CHICKEN & BEEF LRS	320/.5 OZ	BUONA VITA
413332	MEATBALL CHICKEN & BEEF	320/.5 OZ	BUONA VITA
413353	MEATBALLS BEEF & LAMB BAKED	2/5 LB	BUONA VITA
731282	MEATBALLS MINI (WEDDING) BAKED	1/10 LB	BUONA VITA

## FRESH SEAFOOD

300369	ARCTIC CHAR FILLET	1/10 LBA	FISHERY
025501	BRONZINO FILLET SK/ON	1/10 LB	FISHERY
109291	CHILEAN SEA BASS FLT SK ON	1/10 LB	FISHERY
025452	HALIBUT FILLET FRESH SKIN ON	1/10 LBA	FISHERY
300506	SALMON 4/5 FAROE ISLAND	3/4-5 LB	FISHERY
961055	SWORDFISH LOIN	1/10-15 LB	FISHERY
191277	TUNA LOIN #2G WILD FRESH PINK	1/14 LB	FISHERY
965009	CALAMARI T&T 5-8"	12/2.5 LB	OCEAN TIDE
682186	CLAMS MIDDLENECK	1/200 CT	FISHERY
191314	CRABMEAT LUMP BLUE CRAB	12/1 LB	PACKER
191424	CRABMEAT LUMP COLOSSAL BLUE	12/1 LB	CHKN OF SEA
191514	CRABMEAT LUMP JUMBO BLUE CRAB	12/1 LB	CHKN OF SEA
961411	MUSSELS PEI	1/10 LB	FISHERY
961280	SCALLOPS U/10 DRY	1/8 LB	FISHERY
965008	SHRIMP 16/20 P&D TAIL ON	5/2 LB	PACKER
965053	SHRIMP 51/60 P&D TAIL OFF	5/2 LB	PACKER
962406	SHRIMP U/15 P&D TAIL ON	5/2 LB	PACKER
300331	OCTOPUS SPANISH RAW 6-8	1/28LB	STELLA

## BURGERS

009993	BEEF STEAK BURGER 4OZ	40/4 OZ	PLYMOUTH
008165	BEEF BURGER 80/20 THICK FROZEN	27/6 OZ	DRISCOLL
010997	BEEF BURGER 7OZ SPECIAL BLEND	24/7 OZ	PLYMOUTH
091168	BEEF BURGER 8OZ SMASHBALL 1855 ANGUS	20/8 OZ	PLYMOUTH
871035	BUFFALO BISON BURGER 2/1 8OZ FROZEN	20/8 OZ	BLACK WING
018139	TURKEY BURGER WHITE MEAT	30/5.3 OZ	BUTTERBALL
091000	GROUND BEEF 80/20 FRESH	2/5 LB	DRISCOLL
091004	GROUND BEEF 80/20 FROZEN	1/10 LB	DRISCOLL
009701	GROUND BEEF 90% 10/1 LB PKGS	10/1 LB	DRISCOLL
090303	GROUND BEEF 90/10 FRESH	2/5 LB	DRISCOLL
090504	GROUND BEEF 90/10 FROZEN	1/5 LB	DRISCOLL
090506	GROUND BEEF GRASS FED NATURAL	4/2.5 LB	DRISCOLL
090915	GROUND TURKEY ABF	2/10 LB	BUTTERBALL
111718	BURGER BEYOND MEAT VEGAN	6/2 LB	BEYOND BEEF
111717	BURGER BEYOND MEAT VEGAN	32/8 OZ	BEYOND BEEF

# coffee & dessert

## DESSERT

112039	CAKE LIMONCELLO MASCARPONE	1/3.5 LB	FORNO
112027	CANNOLI SHELLS LG 48CT	48/5 OZ	BROOKLYN
112034	CANNOLI SHELLS MINI CHOC COVRD	120/6 OZ	BROOKLYN
121323	CHEESECAKE MINI PLAIN	24/2 OZ	JUNIORS
970417	CHEESECAKE NY STYLE 10"	4/16 SLI	SWEET STREET
121256	CHEESECAKE XANGO BANANA CARAMEL	48/4.8 OZ	SWEET STREET
112029	CREAM CANNOLI W/CHOC CHIPS	4/1.5 LB	BROOKLYN
970415	PIE OREO COOKIE BASH 14 SLI	4/12"	SWEET STREET
112035	TIRAMISU DESSERT UNCUT TRAYS	2/4.25 LB	BROOKLYN
112038	TIRAMISU INDIV DESSERT CUP	12/3.5 OZ	BROOKLYN



key west  
key lime

#121219 | 24/5 oz

## GELATO

256342	BUTTER PECAN	1/2.5 GAL	NY CLASSIC
256302	CARAMEL SALTED	1/2.5 GAL	NY CLASSIC
256301	CHOCOLATE	1/2.5 GAL	NY CLASSIC
256305	ESPRESSO	1/2.5 GAL	NY CLASSIC
256359	MINT CHOCOLATE CHUNK	1/2.5 GAL	NY CLASSIC
256338	OLIVE OIL	1/2.5 GAL	NY CLASSIC
256353	PISTACHIO	1/2.5 GAL	NY CLASSIC
256306	PUMPKIN	1/2.5 GAL	NY CLASSIC
256320	RASPBERRY	1/2.5 GAL	NY CLASSIC
256300	VANILLA BEAN	1/2.5 GAL	NY CLASSIC
256341	WHITE CHOCOLATE	1/2.5 GAL	NY CLASSIC



tiramisu

#121209 | 24/4 oz



lil red velvet

#121269 | 24/5.25 oz

## COFFEE

510220	COFFEE BLEND SUMMIT	84/2.5 OZ	STONE PEAK
510221	COFFEE BLEND VALLEY	84/2.5 OZ	STONE PEAK
510224	COFFEE COLOMBIAN 100%	84/2.5 OZ	STONE PEAK
510223	COFFEE DECAF	42/2 OZ	STONE PEAK
510229	COFFEE DECAF HAZELNUT	64/3 OZ	STONE PEAK



molten  
chocolate  
lava

#920105 | 36/5 oz



# takeout essentials

## ECO-FRIENDLY CONTAINERS



BIO BOX WHITE #3	#513594	8"X5"X2.5"	200 CT
BIO BOX KRAFT #1	#513596	4"X3"2.5"	450 CT
BIO BOX KRAFT #2	#513687	7"X5"X2"	200 CT
BIO BOX KRAFT #3	#513597	7"X5"X2.5"	200 CT
BIO BOX KRAFT #4	#513595	7"X5"X3.5"	160 CT
BIO BOX KRAFT #8	#513598	6"X4"X2.5"	300 CT
BIO HINGE PAPER	#745009	8"X6"X3"	200 CT

## PLASTIC CONTAINERS



**CONT PL HINGE 6X6 ANCHOR, 420 CT**  
#781002



**9X6 PLASTIC HINGE CONTAINER ANCHOR, 120 CT**  
#511975



**6X6 PLASTIC HINGE CONTAINER ANCHOR, 300 CT**  
#781827



**CONT PL HINGE 10.5X9.5 ANCHOR, 120 CT**  
#781750



**CONT PL HINGE 3 SEC 9X9 ANCHOR, 100 CT**  
#705055



**10.5"X9.5" PLASTIC HINGE CONTAINER ANCHOR, 100 CT**  
#705056



**16 OZ SQUARE COMBO 6.68" x 5.81" x 2.41" ANCHOR, 200 CT**  
#781818



**9"X9" ANCHOR, 100 CT**  
#781901



**CONT PLASTIC HINGE 5X5 ANCHOR, 500 CT**  
#511955



**CONT HINGE PLASTIC 8X8 ANCHOR, 250 CT**  
#690606

## PAPER BAGS

ITEM#	DESCRIPTION	PACK	DIMENSIONS
750801	BROWN PAPER #8	500 CT	6X4X13
750405	BROWN PAPER #25	500 CT	8X5X18
750810	WHITE PAPER #8	500 CT	6X4X13
751202	WHITE PAPER #12	1000 CT	7X4X13
754702	BROWN SHOP W HANDLE TINY	250 CT	8X4X10
752005	BROWN SHOP W HANDLE SMALL	250 CT	10X15X13
754726	BROWN SHOP W HANDLE LARGE	250 CT	13X7X17
754706	BROWN SHOP W HANDLE JUMBO	200 CT	18X7X18.25
752006	WHITE SHOP W HANDLE SMALL	250 CT	10X15X13

## DISPOSABLE CUPS

ITEM#	DESCRIPTION	LID#	PACK SIZE
741235	CUP PLASTIC PET 9 OZ	690616	1/1000 CT
511613	CUP PLASTIC PET 12 OZ	741616	1/1000 CT
511910	CUP FOAM WHITE 6 OZ	511916	1/1000 CT
740802	CUP FOAM WHITE 8 OZ	705039	1/1000 CT
741627	CUP FOAM WHITE 10 OZ	741626	1/1000 CT
741204	CUP FOAM WHITE 12 OZ	705012	1/1000 CT
741604	CUP FOAM WHITE 16 OZ	741605	1/1000 CT
740835	CUP FOAM WHITE 20 OZ	741605	1/500 CT
513105	PAPER COLD CUP 9 OZ	513107	1/2000 CT
742003	PAPER HOT CUP 20 OZ	741896	1/500 CT

## DISPOSABLE PLATES & CUTLERY

SKU	DESCRIPTION	PACK SIZE
731060	FORK WHITE IND WRAPPED	1/1000 CT
731061	KNIFE WHITE IND WRAPPED	1/1000 CT
731029	KNIFE BLACK HEAVY ND WRAPPED	1/1000 CT
731070	SPOON WHITE MED IND WRAPPED	1/1000 CT
731024	SPOON SOUP BLACK IND WRAPPED	1/1000 CT
511780	CUTLERY KIT F-K-S-NAPKIN	1/250CT
511760	CUTLERY KIT F-S-K-NAPKIN	1/500 CT
511775	CUTLERY KIT HEAVY F/K/S/NAP	1/500 CT
650001	PLATE PAPER COATED HEAVY 8.5"	1/500 CT
513154	PLATE PAPER COATED 9"	1/500 CT

## FILM & FOIL

ITEM #	DESCRIPTION	PACK SIZE
761817	FILM WRAP 12X2000	1/2000 FT
761815	FILM WRAP 18X2000 CUTTER	1/2000 FT
761821	FILM WRAP 18X2000 SLIDE	1/2000 FT
761819	FILM WRAP 24X2000	1/2000 FT
761204	FILM WRAP ECONOMY 24	1/2000 FT
761207	FOIL 12 HEAVYWEIGHT	1/500 FT
761202	FOIL 12 STANDARD WEIGHT	1/1000 FT
761799	FOIL 12 STANDARD WEIGHT	1/1000 FT
761000	FOIL 18 HEAVY ECONOMY	1/500 FT
760801	FOIL 18 HEAVY ECONOMY	1/1000 FT
761804	FOIL 18 HEAVYWEIGHT	1/500 FT
761802	FOIL 18 STANDARD WEIGHT	1/1000 FT
761823	FOIL 18 STANDARD WEIGHT	1/500 FT
761805	FOIL 24 HEAVYWEIGHT	1/1000 FT
761810	FOIL 24' HEAVYWEIGHT	1/500 FT







[www.driscollfoods.com](http://www.driscollfoods.com)