



# LABOR SAVERS









## what's inside

**1** **LABOR SOLUTIONS**

---

**7** **BREAKFAST**

---

**9** **PRODUCE**

---

**13** **SOUPS & SALADS**

---

**14** **BASES & SAUCES**

---

**15** **FULLY COOKED PROTEIN**

---

**21** **SEAFOOD**

---

**23** **DESSERT**

---

**25** **READY MADE MEALS**

---



# Make Your Restaurant a Great Place to Work

## OFFER PROFESSIONAL DEVELOPMENT AT ALL LEVELS

Most employees receive foundational on-the-job training, though employees do wish they received more career advancement training. Opportunities for professional development are critical to employee satisfaction and, subsequently, lower turnover rates.

## CREATE A GROWTH PATH FOR YOUR EMPLOYEES

A big contributor to restaurant turnover is having overqualified employees who feel they are stuck in entry-level positions. It's crucial to think of all new hires and existing employees as potential managers and operators, making proper training a vital strategy for long-term growth and retention. Make the paths to higher level jobs at your restaurant clear and attainable.

## CHANGE YOUR MANAGEMENT STYLE

A simple strategy for retaining talent is considering your approach to managing staff. Open communication and transparency will strengthen the relationship between the owner and staff. Try involving your employees in the high-level decisions that will affect their everyday routine, for example. This will help foster a culture of trust and empower everyone involved.

## TOP REASONS RESTAURANT EMPLOYEES LEAVE A RESTAURANT JOB

24%

Wasn't paid enough

16%

Life circumstances outside the restaurant

13%

Didn't have good relationship with manager

12%

No opportunities for growth



## LATE-NIGHT COOKING CLASSES

At Chicago's upscale Blackbird, Chef Ryan Pfeiffer hosts late-night cooking classes in his kitchen after hours for his chefs and others from nearby restaurants. Previous "After School Demos" have taught chefs how to break down a whole pig, Japanese fish-slaughtering and how to prepare a French galantine.





### PAID INTERNSHIP/SCHOLARSHIP PROGRAMS

Fast casuals such as Honeygrow, Hopdoddy Burger Bar, and Tender Greens are looking to use education as a tool, not only to help existing employees grow and become better workers, but also as an enticement for others, especially younger generations, to join and remain with their teams.

Tender Greens has developed an educational initiative dubbed the Sustainable Life Program, a six-month paid internship offered to emancipated foster youth interested in the culinary arts.

### PARTNER UP!

Reach out to your community for support.

Build relationships with local organizations, high schools, college fairs and after-school programs to offer free training or skill-building workshops to people in exchange for a term of employment. Becoming a pillar of the community sets the foundation for harmonious partnerships where the restaurant will get staff, and the employees will receive a valuable skill set as they enter the labor market.



### HOMEWORK HOUR.

Imagine getting paid to do homework!?! A well-established restaurant contacted the Guidance Department of their local School District. An idea was proposed where the students that had an interest in working at the Restaurant could get dropped off right after school, clock in and do their homework for an hour while getting paid.

# Strategic Recruiting

## CREATE A STAFF REFERRAL PROGRAM

If you already have some great employees, odds are they know other restaurant workers who are also great at what they do. Enlist their help in the hiring process by implementing an employee referral program. Offer a bonus to any staff member who refers someone you end up hiring. They'll help spread the word about your job openings.

## UTILIZE SOCIAL MEDIA MARKETING

The younger generations react to short, personalized videos on social media platforms, like Facebook, Instagram, Twitter, LinkedIn, TikTok, and YouTube. Create a video showcasing your brand, company culture, work environment, and employee benefits.

## TRANSFORM YOUR JOB DESCRIPTIONS

Ensure that the job requirements clearly outline each position's requirements, duties, and expectations. This will help you attract suitable candidates and make onboarding easier. Tell job seekers who you are, what you do, and why you do it—don't be afraid to get to the heart and soul of your business.

## Throw a Hiring Party

Hold hiring parties that offer free food in a festive atmosphere with on-site applications and on-the-spot interviews. Some sites report receiving twice the number of applications needed to fill open positions.



snagajob

POACHED  
FOOD DRINKS JOBS

## WHERE TO POST YOUR JOB LISTING

- Career Builder
- Craigslist
- Culintro
- Facebook
- Indeed
- Good Food Jobs
- Jobs on the Menu
- LinkedIn
- Monster
- Poached
- Snagajob
- Culinary Agents



# leveraging technology

While the restaurant industry finds its footing, technology can help ease some of the challenges that stem from the ongoing labor shortage. Here's how to make the most of tech tools to streamline your workflow and take some of the pressure of the staff you do have.

## plato

Introducing a new way to integrate robotics into the hospitality industry. Plato multiplies your workforce and amplifies your service environment to create a memorable guest experience.

### A Service Robot Made for everyday tasks

#### HELPING STAFF

Plato helps staff by delivering food and drinks directly to guests via voice command or tablet.



#### REDUCE RISK

With 25,000 slip and fall accidents every day in the US, Plato creates a safer work environment by alleviating workload for staff and reducing risk for work related injuries.



#### IMPROVE SERVICE

Outpace the competition and drive sales by allowing staff to spend more time with guests, increasing table turnover rate and "wow" factor of Plato.





## Pay your compliments, to the chef.

The first platform that connects "back of house" staff with their patrons, allowing diners to send some love to everyone that made it happen, from the head chef to the dishwasher.



## We help you and your staff get paid.

We provide everything you need to start receiving tips from customers and getting your staff paid!

### Onboard

Create a team, then invite and manage your staff members.

### Collect

Display our QR code to patrons and watch as the tips roll in!

### Payout

Determine who gets what and send the tips their way.

Dashboard		Tip Page
Total Tips	Tips Received	Avg. Tip
\$718.97	157	\$3.50
Amount	Date	
\$3.00 Paid	July 18th, 2022, 10:30 PM	
\$2.00 Paid	July 18th, 2022, 9:30 PM	
\$3.00 Paid	July 18th, 2022, 8:30 PM	
\$5.00 Paid	July 18th, 2022, 7:30 PM	
\$3.00 Paid	July 18th, 2022, 6:30 PM	
\$4.00 Paid	July 18th, 2022, 5:30 PM	
\$3.00 Paid	July 18th, 2022, 4:30 PM	
\$4.00 Paid	July 18th, 2022, 3:30 PM	



A close-up photograph of a pizza on a metal tray. The pizza is topped with a red tomato sauce, browned sausage, yellow cherry tomatoes, and green spinach leaves. The crust is thick and white. In the background, there is a glass of amber-colored beer and a stack of white plates. The entire scene is set on a blue textured surface.

# LABOR SAVING PRODUCTS



# BREAKFAST TIME

## FULLY COOKED BACON

008518	BACON PRE COOKED EXTRA THICK	2/150 CT	DAILYS
873009	BACON PRE COOKED 300CT	2/1.5 LB	PACKER
400300	BACON TOPPING 1/2" FC	2/5 LB	HORMEL
870610	BACON 1 PERFECTLY COOKED 18/22	2/144 SLC	HORMEL
870602	BACON ROUND PRECOOKED	1/192 CT	HORMEL

## FULLY COOKED SAUSAGE

416657	SAUSAGE LINK CHICKEN FC 1.4 OZ	1/10 LB	JONES
871014	SAUSAGE PATTY 2OZ FC	1/10 LB	FARMLAND
871005	SAUSAGE PORK LINK FC SKNLS	1/10 LB	FARMLAND
091604	SAUSAGE SWEET LINK FC	1/10 LB	PREMIO
416658	SAUSAGE PORK LINK 1.6 OZ	1/10 LB	JONES

## POTATOES

831201	HASH BROWN PATTIES OVENABLE	240/2.12 OZ	CAVENDISH
833003	HOME FRIES SLICE 3/16	6/5 LB	SIMPLT
833051	POTATO DICED SEASONED	6/5 LB	CAVENDISH
700404	POTATO PANCAKE OLD EURO	6/5 LB	SIMPLT
700283	POTATO TOTS (NUGGETS) GOLDEN	6/5 LB	CAVENDISH

## EGGS & OMELETTES

055001	EGG HARD COOKED	2/10 LB	NEWBURG
051912	EGG HARD COOKED PEELED	12/12 CT	PAPETTI
410021	EGG PATTY SCRAMBLED ROUND	120/1.5 OZ	PAPETTI
893042	EGG PATTY VEGAN	120/2 OZ	JUST EGG
054001	EGG SCRAMBLED COOKED	8/2.5 LB	EGG LOW
171232	EGG SCRAMBLED MIX CN	6/5 LB	PAPETTI
171205	OMELETTE CHEESE	72/3.5 OZ	PAPETTI
171201	OMELETTE HALF MOON WESTERN	60/3 OZ	JUNO CHEF
171211	OMELETTE PLAIN 5.5	84/3 OZ	PAPETTI

## HEAT & SERVE



**BELGIAN WAFFLE  
SQUARE**  
KRUSTEAZ, 72/2.4 OZ  
# 931450



**WAFFLE HOMESTYLE  
ROUND**  
EGGO, 144/1.23 OZ  
# 123077



**PANCAKES  
GTF**  
VANS, 12/8 CT  
# 939604



**BUTTERMILK  
PANCAKES**  
EGGO, 144/1.36 OZ  
# 123078



**BELGIAN WAFFLE  
STICKS WGR**  
KRUSTEAZ, 216/.78 OZ  
# 931468



**FRENCH TOAST  
STICKS**  
PAPETTI, 100/2.6 OZ  
# 520101



**FRENCH TOAST  
WGR STICKS**  
RICH'S, 12/2 LB  
# 931456



**FRENCH TOAST  
WGR STICKS**  
BAKE CRAFTERS, 2/5 LB  
# 926056



**FRENCH TOAST  
CINNAMON SWIRL**  
PAPETTI, 100/2.5 OZ  
# 520100



**DUTCH WAFFLE  
WHOLE GRAIN**  
J&J, 1/48 CT  
# 931471



**BUTTERMILK BISCUIT  
BAKED, EASY SPLIT**  
PILLSBURY, 120/2.25 OZ  
# 041026



**BISCUIT SANDWICH  
SAUSAGE, EGG &  
CHEESE**  
JIMMY DEAN, 12/4.9 OZ  
# 231303



# PASTRIES & MUFFINS

## THAW & SERVE

ITEM#	DESCRIPTION	PACK SIZE	BRAND
914617	CROISSANT LG BAKED BUTTER	48/3 OZ	PILLSBURY
921012	CINNAMON ROLLS THAW/SERVE	24/6 OZ	DAVIDS
922399	DANISH ASST IW 3OZ T&S	24/3 OZ	CHEF PIERRE
915165	DANISH MINI SQUARE ASSORT	120/1.6 OZ	DIMITRIA
928820	MUFFIN MINI .9OZ BLUEBERRY T&S	108/.9 OZ	CHEF PIERRE
928819	MUFFIN MINI .9OZ CHOC CHUNK	108/.9 OZ	CHEF PIERRE
921161	MUFFIN WGR CRAN APPLE YOGURT	12/5.8 OZ	MORRISON
120908	SCONE BLUEBERRY PAN & BAKE	80/4 OZ	DAVIDS
120907	SCONE CINNAMON CHIP P&B	80/4 OZ	DAVIDS
120901	SCONE CRANBERRY ORANGE P&B	80/4 OZ	DAVIDS



**DOUBLE  
CHOCOLATE  
CHIP MUFFIN**  
ITEM #921105  
12/6 OZ



**CHOCOLATE  
CHIP BAKED  
MUFFIN**  
ITEM #921135  
12/6 OZ



**BANANA  
NUT  
MUFFIN**  
ITEM #921137  
12/6 OZ



**CORN  
MUFFIN**  
ITEM #921134  
12/6 OZ



**FRENCH  
TOAST  
MUFFIN**  
ITEM #995488  
12/6 OZ



**RED VELVET  
YOGURT  
MUFFIN**  
ITEM #995489  
12/6 OZ

# BATTERS & DOUGHS

ITEM#	DESCRIPTION	PACK SIZE	BRAND
995435	MUFFIN BATTER APPLE CINN BURST	2 / 8 LB	BAKE N JOY
921116	MUFFIN BATTER BANANA NUT	2 / 8 LB	DAVIDS
995444	MUFFIN BATTER BLUEBERRY	2 / 8 LB	DAVIDS
995447	MUFFIN BATTER CHOC CHIP	2 / 8 LB	DAVIDS
995428	MUFFIN BATTER CINN COFFEE CAKE	2 / 8 LB	BAKE N JOY
995446	MUFFIN BATTER CORN	2 / 8 LB	DAVIDS
995403	MUFFIN BATTER CRAN ORANGE NUT	2 / 8 LB	BAKE N JOY
921128	MUFFIN BATTER DBL CHOC CHIP	2 / 8 LB	DAVIDS
995463	MUFFIN BATTER FRENCH TOAST	2 / 8 LB	DAVIDS
995448	MUFFIN BATTER HEALTHY HARVEST	2 / 8 LB	DAVIDS
995408	MUFFIN BATTER LEMON FLAVORED	2 / 8 LB	BAKE N JOY
120869	MUFFIN BATTER LEMON POPPY	2 / 8 LB	DAVIDS
995425	MUFFIN BATTER PISTACHIO FLAV	2 / 8 LB	BAKE N JOY
995449	MUFFIN BATTER RAISIN BRAN	2 / 8 LB	DAVIDS
921215	MUFFIN BATTER RED VELVET	2 / 8 LB	DAVIDS
915358	CINNAMON DOUGH ROLL	100/3 OZ	PILLSBURY
041035	DANISH DOUGH SLAB	2/15 LB	PILLSBURY
120904	SCONE DOUGH ASST CINN/BLUE/RAISN	80/4 OZ	DAVIDS
120908	SCONE DOUGH BLUEBERRY IQF	80/4 OZ	DAVIDS
120907	SCONE DOUGH CINNAMON CHIP IQF	80/4 OZ	DAVIDS
120901	SCONE DOUGH CRANBERRY ORANGE IQF	80/4 OZ	DAVIDS
120910	SCONE DOUGH PUMPKIN IQF	80/4 OZ	DAVIDS





# FRESH CUT PRODUCE

ITEM #	DESCRIPTION	PACK SIZE	ITEM #	DESCRIPTION	PACK SIZE
751247	BEANS GREEN CLIPPED	2/5 LB	752521	LETTUCE SHREDDED 1/8	4/5 LB
751600	BEANS WAX CLIPPED	2/5 LB	685062	MANGO CHUNKS 1 INCH	1/5 LB
750940	BROCCOLI FLORETS	2/5 LB	107573	ONION JULIENNE	2/5 LB
109337	BROCCOLI FLORETS	4/3 LB	751161	ONION RED DICED	1/20 LB
109335	BRUSSEL HALVES	2/3 LB	109149	ONION WHOLE PEELED YELLOW	4/5LB
107330	BRUSSEL SPROUTS SHAVED	2/3 LB	751910	ONION YELLOW DICED	4/5 LB
751021	CABBAGE GREEN SHREDDED	4/5 LB	751493	ONION YELLOW SLICED	1/20 LB
751020	CABBAGE RED SHREDDED	4/5 LB	255526	ORANGE WEDGES	50/2 OZ
685058	CANTALOUPE CHUNK 1 INCH	1/5 LB	102454	PEPPER DICED TRICOLOR 4/5#	1/20 LB
752151	CARROT DICED 1/2 IN	4/5 LB	751162	PEPPER GREEN DICED	1/20 LB
750180	CARROTS DICED 1/4 IN	2/5 LB	705890	PEPPER GREEN QUARTERED	2/5 LB
103350	CARROTS JULIENNE SLICED	2/5 LB	705889	PEPPER RED QUARTERED	2/5 LB
751200	CARROTS MATCHSTIX	4/5 LB	751177	PEPPER YELLOW DICED	1/20 LB
751260	CARROTS STICKS	4/5 LB	109754	PEPPER YELLOW DICED	1/20 LB
109704	CELERY CHOPPED	4/5 LB	752889	PEPPER YELLOW STRIPS	1/5LB
751460	CELERY STICKS (5# BG)	4/5 LB	685055	PINEAPPLE CHUNK 1 INCH	1/5 LB
752004	COLESLAW MIX SHRED	4/5 LB	685067	PINEAPPLE CHUNK CUPS 1 INCH	65/4 OZ
109823	COLLARD GREENS CHOPPED	4/2.5 LB	255626	POTATO SWEET CRINKLE CUT	12/16 OZ
107409	CUCUMBER DICED SKIN ON 1/4	2/5 LB	751045	TOMATO DICED	2/5 LB
80840	FRUIT SALAD MIX CANT,PINE,DEW,GRAPE	65/4 OZ	751777	TOMATO PLUM DICED 1/4	1/20 LB
110686	GRAPES RED NO STEM	2/5 LB	751046	TOMATO SLICED	2/5LB
685075	HONEY DEW,PINEAPPLE,CANTALOUPE RED GRAPE	2/5 LB	685068	WATERMELON CHUNK CUPS 1 INCH	65/4 OZ
685060	HONEYDEW CHUNKS 1 INCH	1/5 LB	255678	WATERMELON CHUNKS 1 INCH	2/5 LB
110702	LEMON SLICED 1/4 INCH	2/5 LB	685061	WATERMELON CHUNKS 1INCH	1/5 LB
751115	LETTUCE CHOPPED ROMAINE 6/2LB	6/2 LB	751033	YELLOW SQUASH CHUNKS	2/5 LB
878343	LETTUCE ROMAINE SHREDDED	6/2 LB	725887	ZUCCHINI CHUNKS	2/5 LB



**SHAVED BRUSSEL  
SPROUTS**  
# 107330 - 2/3 LB



**PICO  
MIX**  
# 751887 - 2/5 LB



**TRI COLOR  
PEPPERS DICED**  
# 102454- 1/20 LB



**CARROTS  
JULIENNE**  
# 103350- 2/5 LB



**MANGO  
DICED**  
# 752524- 2/5 LB



# PRE-PROCESSED PRODUCE



**BABY BAKER HALVES  
WITH HERBS &  
PARMESAN**

ITEM # 479156 - 6/2.5 LB



**POTATO DICED LARGE  
3/4\" SKINLESS**

ITEM # 700245 - 6/5 LB



**ROASTED ROSEMARY  
REDSKIN POTATOES**

ITEM # 831501 - 6/2.5 LB



**BABY BAKER WHOLE  
ROASTED WITH  
GARLIC & OIL**

ITEM # 479155 - 6/2.5 LB



**POTATO SLICE 3/16  
HOME FRIES**

ITEM # 833003- 6/5 LB

## VEGETABLES

ITEM #	DESCRIPTION	PACK SIZE	BRAND
530591	ARTICHOKE HEARTS 40/50CT	6/88 OZ	ROLAND
530500	ARTICHOKE HEARTS MARIN/QTR	6/67 OZ	ROLAND
841217	AVOCADO CHUNKY PULP	6/2 LB	AVO-KING
481470	AVOCADO HALVES	4/3 LB	AVO-KING
700344	AVOCADO PULP HARVEST FRESH	6/3 LB	SIMPLOT
942395	BROCCOLI FLORETS W/P	12/2 LB	SIMPLOT
883110	CORN CUT FLAME- ROASTED	1/20 LB	SIMPLOT
883113	CORN CUT SIMPLY SWEET	12/40 OZ	SIMPLOT
841216	GUACAMOLE ORIGINAL	12/1 LB	AVO-KING
841214	GUACAMOLE SOUTHWESTERN	12/1 LB	AVO-KING
841224	GUACAMOLE WESTERN STYLE	12/1 LB	AVO-KING
391210	PEPPERS RED ROASTED	6/88.2 OZ	ROLAND
682579	SPINACH CHOPPED IQF	1/20 LB	SIMPLOT
521240	TOMATOES CRUSHED W/BASIL	6/#10	FURMANO
520646	TOMATOES DICED	6/#10	FURMANO
520627	TOMATOES STEWED	6/#10	FURMANO

## FRUIT

ITEM #	DESCRIPTION	PACK SIZE	BRAND
479158	APPLES FUJI ROASTED	6/2.5 LB	SIMPLOT
250617	FRUIT TROPICAL IN JUICE	6/81 OZ	DOLE
915516	IQF BANANA SLICED	1/20 LB	VALLEY FRESH
843008	IQF BLACKBERRY	1/10 LB	VALLEY FRESH
843006	IQF BLUEBERRIES	1/30 LB	VALLEY FRESH
922011	IQF CRANBERRIES WHOLE	2/5 LB	VALLEY FRESH
845217	IQF MANGO CUBE	2/5 LB	VALLEY FRESH
220632	IQF PINEAPPLE CHUNKS	1/22 LB	VALLEY FRESH
843003	IQF STRAWBERRIES	2/5 LB	VALLEY FRESH
845217	MANGO CUBES DICED IQF FRUIT	2/5 LB	DOLE
222414	PINEAPPLE CRUSHED	12/20 OZ	DOLE
250667	PINEAPPLE SLICED PIJ	6/107 OZ	DOLE
222417	PINEAPPLE TIDBITS IN JUICE	6/#10	DOLE



# VEGGIE BLENDS



**CALIFORNIA BLEND**  
ITEM # 684745 - 12/2 LB  
broccoli, cauliflower & carrots



**STIR FRY SUPREME  
VEGETABLE BLEND**  
ITEM # 651921 - 12/2 LB  
broccoli, peas, carrots, corn, onion, celery



**MONTEREY BLEND**  
ITEM # 941508 - 8/3 LB  
broccoli, cauliflower, carrots &  
yellow carrots



**SONOMA BLEND**  
ITEM # 941500 - 8/3 LB  
broccoli, sugar snap peas, orange  
& yellow carrots



**SWEET CORN &  
JALAPENO BLEND**  
ITEM # 883009 - 6/2.5 LB  
sweet & white corn, jalapeno, green  
onion, garlic & cilantro



**MIREPOIX BLEND**  
ITEM # 99589 - 12/2 LB  
onion, carrot & celery



**FLAME ROASTED  
PEPPER & ONION**  
ITEM # 833088 - 6/2.5 LB  
onion, green & red bell peppers flame  
roasted with olive oil



**UNSEASONED  
PEPPER & ONION**  
ITEM # 700303 - 6/2.5 LB  
onion, green & red bell peppers



**TUSCAN BLEND**  
ITEM # 700231 - 8/3 LB  
green beans, carrots, yellow squash,  
zucchini & red bell pepper



**SICILIAN BLEND**  
ITEM # 944815 - 6/4 LB  
green bean, carrots, cauliflower, red  
pepper, yellow pepper, onions



**NORMANDY BLEND**  
ITEM # 944816 - 6/4 LB  
broccoli, cauliflower, sliced carrots,  
zucchini, yellow squash





# VALUE ADDED

## COMMODITY PRODUCE



CELERY #751082	CELERY DICED #109704	CELERY STICKS #751460
24 count 60 min of labor (diced) 50 min of labor (sticks)	4/5lb bags ZERO Labor	4/5 lb bags ZERO Labor
Gross Weight = 60lb 60% Yield	Gross Weight = 20lb 100% Yield	Gross Weight = 20lb 100% Yield
Case Cube = 1.8 Net Weight = 36lb	Case Cube = .82 Net Weight = 20lb	Case Cube = .82 Net Weight = 20lb

CAULIFLOWER #751091	CAULIFLOWER FLORETS #109338	CAULIFLOWER RICE #751340
12 count 25 minutes of Labor	4/3lb bags ZERO Labor	6/2 lb bags ZERO Labor
Gross Weight = 28 lb 35% Yield	Gross Weight = 12 lb 100% Yield	Gross Weight = 11lb 100% Yield
Case Cube = 1.45 Net Weight = 9.8 lb	Case Cube = .41 Net Weight = 12 lb	Case Cube = 1 Net Weight = 11 lb

CARROTS #751010	CARROTS MATCHSTICK #751200	CARROT STICKS #751260	DICED CARROTS #752151
50 lb 180 min of Labor (sticks) 150 min of Labor (shredded)	4/5 lb bags ZERO Labor	4/5 lb bags ZERO Labor	2/5 lb bags ZERO Labor
Gross Weight = 50lb 65% Yield	Gross Weight = 20lb 100% Yield	Gross Weight = 20lb 100% Yield	Gross Weight = 10lb 100% Yield
Case Cube = 1.63 Net Weight = 32.5lb	Case Cube = 1.01 Net Weight = 20lb	Case Cube = 1.01 Net Weight = 20lb	Case Cube = .56 Net Weight = 10lb

CABBAGE #751080	SHREDDED CABBAGE #751021	RED CABBAGE #751089	SHREDDED RED CABBAGE #751020
50 lb box 70 minutes of Labor	4/5 lb bags ZERO Labor	14-16 ct 70 minutes of Labor	4/5 lb bags ZERO Labor
Gross Weight = 50lb 65% Yield	Gross Weight = 20lb 100% Yield	Gross Weight = 50lb 65% Yield	Gross Weight = 20lb 100% Yield
Case Cube = 2.63 Net Weight = 32.5lb	Case Cube = 1.04 Net Weight = 20lb	Case Cube = 2.63 Net Weight = 32.5lb	Case Cube = 1.04 Net Weight = 20 lb

## Value Added Produce

- Triple Washed
- Ready to Serve
- Zero Waste
- Takes up less space in your cooler.

BROCCOLI #751090
14 count Broccoli 30 minutes of Labor
Gross Weight = 25 lbs 40% Yield
Case Cube = 1.52 Net Weight = 10 lbs

BROCCOLI FLORETS #750940
2/5 lb bags ZERO Labor
Gross Weight = 10 lbs 100% Yield
Case Cube = .96 Net Weight = 10 lbs



# SOUPS

## HEAT & SERVE

ITEM #	DESCRIPTION	PACK SIZE	BRAND
400716	SOUP BISQUE LOBSTER MAINE	4/4 LB	BLOUNT
400718	SOUP BROCCOLI & CHEDDAR CHEESE	4/4 LB	BLOUNT
400760	SOUP CHICKEN & DUMPLING ABF	4/4 LB	BLOUNT
400740	SOUP CHICKEN KALE & SW POTATO	4/4 LB	BLOUNT
400826	SOUP CHICKEN LEMON ORZO	4/4 LB	BLOUNT
400717	SOUP CHICKEN NOODLE	4/4 LB	BLOUNT
962029	SOUP CHICKEN NOODLE	4/4 LB	BLOUNT
400722	SOUP CHOWDER NEW ENGLAND CLAM	4/4 LB	BLOUNT
400719	SOUP CREAMY TOMATO GTF	4/4 LB	BLOUNT
961310	SOUP ITALIAN WEDDING	4/4 LB	BLOUNT
700742	SOUP MINISTRONE	4/4 LB	BLOUNT
400715	SOUP SHRIMP AND ROAST CORN	4/4 LB	BLOUNT
400721	SOUP TURKEY SAUSAGE AND KALE	4/4 LB	BLOUNT

# PRE-MADE SALADS

ITEM #	DESCRIPTION	PACK SIZE	BRAND
530676	BEETS SALAD SLICED	6/10 #	PACKER
070101	CHICKEN SALAD	4/4 LB	SALLY SHERMAN
070248	COLE SLAW ZTF	2/10 LB	SALLY SHERMAN
070230	COLESLAW	1/30 LB	SALLY SHERMAN
682276	COLESLAW HOMESTYLE	2/5 LB	DON'S
682277	MACARONI SALAD	2/5 LB	DON'S
070233	MACARONI SALAD PAIL	1/30 LB	SALLY SHERMAN
070243	MACARONI SALAD ZTF	2/10 LB	SALLY SHERMAN
070232	POTATO SALAD PAIL	1/30 LB	SALLY SHERMAN
070242	POTATO SALAD ZTF	2/10 LB	SALLY SHERMAN
517223	SEAWEED SALAD FROZEN	4/2 KG	EMERALD
070111	TUNA SALAD ZTF	2/4 LB	SALLY SHERMAN

## SOUP AS AN INGREDIENT

Prepared foods used as ingredients can also save a lot of time in the kitchen. Soup is an especially great option for this type of approach, because it can boost the flavor of just about anything it's added to.

Using tomato soup as a base for making an Indian-inspired butter chicken entree can help operators offer on-trend ethnic dishes in a fraction of the time.



### TOMATO SOUP LRS

#950491, 4/4 lb



Turn your French onion soup into an onion dip by adding cream cheese, sour cream, roasted garlic and crispy fried onions.



### FRENCH ONION SOUP

#400704, 4/4 lb



Combine roasted red pepper and smoked gouda bisque with mayonnaise and add an innovative flavor to your sandwich offerings or use as a dipping sauce.



### RED PEPPER & SMOKED GOUDA BISQUE

#950457, 4/4 lb





# BASES & SAUCES

## Saving time on slow cooking

Speed-scratch ingredients such as flavor concentrates are great for applications that normally involve lengthy cooking times or a degree of culinary expertise, such as stocks, soups, bastes and marinated items, where it can otherwise take hours to develop flavors.

### BASES

ITEM #	DESCRIPTION	PACK SIZE	BRAND
450691	BASE BEEF STOCK NO MSG	6/1 LB	EMERALD
450688	BASE CHICKEN NO MSG	6/1 LB	EMERALD
450698	BASE CLAM STOCK NO MSG	6/1 LB	EMERALD
450692	BASE CRAB STOCK NO MSG	6/1 LB	EMERALD
680093	BASE HAM NO MSG	12/1 LB	MAJOR
450694	BASE LOBSTER STOCK NO MSG	6/1 LB	EMERALD
450705	BASE MUSHROOM	6/1 LB	EMERALD
995102	BASE POBLANO ROASTED	6/13.6 OZ	MINORS
450689	BASE PORK STOCK NO MSG	6/1 LB	EMERALD
451240	BASE SEAFOOD NO MSG	6/1 LB	ELITE
450693	BASE SHRIMP STOCK NO MSG	6/1 LB	EMERALD
451230	BASE SOUP CREAM	6/25.22 OZ	LEGOUT

## LIQUID CONCENTRATED BASES/PASTES

ITEM #	DESCRIPTION	PACK SIZE	BRAND
450356	BASE BEEF LRS PASTE GTF	6/1 LB	GOLD LABEL
453005	BASE BEEF PASTE FLV	1/20 LB	MAJOR
450355	BASE CHICKEN PASTE LRS GTF	6/1 LB	GOLD LABEL
450603	BASE CLAM ULTIMATE	6/1 LB	KNORR
450359	BASE VEGETABLE ROASTED PASTE	6/1 LB	GOLD LABEL

## SAUCES & GRAVIES

ITEM #	DESCRIPTION	PACK SIZE	BRAND
451342	MIX GRAVY BEEF INSTANT	8/12.16 OZ	LEGOUT
451345	MIX GRAVY TURKEY	8/1 LB	LEGOUT
460448	MIX SAUCE AU JUS	16/3.3 OZ	LEGOUT
460622	SAUCE & MARINADE SESAME GARLIC	4/.5 GAL	ASIAN MENU
940205	SAUCE CHIMICHURRI	3/30 OZ	ARMANINO
450401	SAUCE HOLLANDAISE	4/30.2 OZ	KNORR
450802	SAUCE MIX DEMI GLACE	4/28 OZ	KNORR
160677	SAUCE MIX DEMI GLACE	4/38 OZ	CUSTOM CULINARY

# SCRATCH QUALITY LESS LABOR

Mix sour cream with fire-roasted poblano flavor concentrate to ramp up the flavor of classic fish tacos, garnished with pickled cabbage and thinly sliced red onions



### FIRE ROASTED POBLANO FLAVOR CONCENTRATE

#995102, 6/13.6 oz

## LIQUID BASE CONCENTRATION

Knorr

### BEEF FLAVOR

#451225, 4/32 oz

### CHICKEN FLAVOR

#451226, 4/32 oz



### VEGETABLE FLAVOR

#451227, 4/32 oz

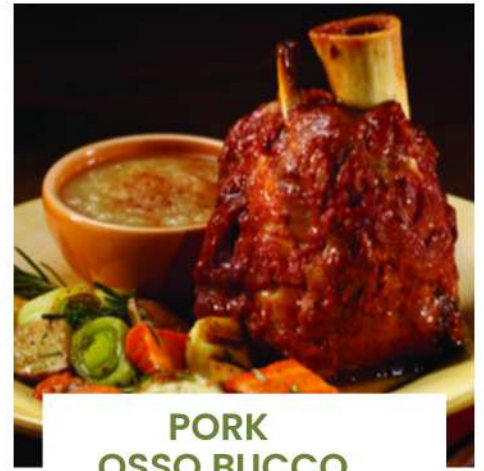


# FULLY COOKED MEATS

READY TO GO!



**LAMB SHANK  
BRAISED IN DEMI**  
BONEWERKS, 12/1 BAG  
#7116



**PORK  
OSSO BUCCO**  
HORMEL, 6/2 CT  
#091242



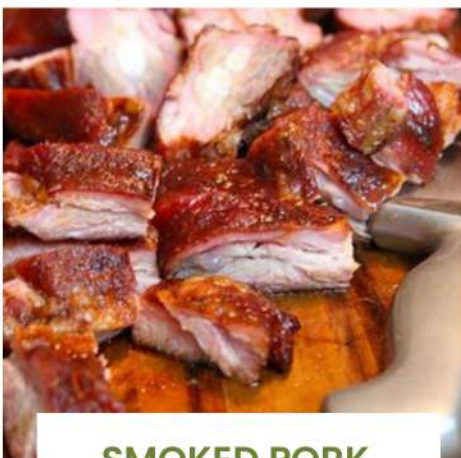
**FIRE BRAISED  
PORK RIBS**  
HORMEL, 1/12 CT  
#009333



**BABY BACK PORK  
RIBS IN SAUCE**  
HATFIELD, 16/1.75 LBA  
#090430



**PECANWOOD  
SMOKED RIB RIPS**  
AUSTIN BLUE, 4/5 LB  
#873005



**SMOKED PORK  
RIB BITS B/I**  
SMITHFIELD, 2/5 LB  
#091154



**PORK CARNITAS**  
HORMEL, 6/5 LB  
#891806



**STEAK FLANK FIRE  
BRAISED**  
HORMEL, 2/2 PC  
#111793





**BEEF POT ROAST  
COOKED ANGUS  
FREIRICH, 1/10 LBA  
#683415**



**BONELESS  
SHORT RIBS  
FREIRICH, 4/5 LB  
#091150**



**BONELESS BRAISED  
SHORT RIB  
BONEWERKS, 20/12 OZ  
#450805**

## MEATBALLS

**MEATBALLS ALL BEEF  
NONNA'S,  
#413355, 160/1 OZ  
#413340, 80/2 OZ**

**MEATBALLS BEEF & PORK  
NONNA'S, 160/1 OZ  
#413360**

**MEATBALLS CHICKEN & BEEF  
BUONA VITA, 160/1 OZ  
#861603**

**MEATBALLS BEEF & LAMB  
BUONA VITA, 2/5 LB  
#413353**



ITEM #	DESCRIPTION	PACK SIZE	BRAND
683415	BEEF POT ROAST COOKED ANGUS	1/10 LBA	FREIRICH
450815	BEEF SHORT RIBS BRAISED	25/9.3 OZ	BONEWERKS
680072	BEEF TACO FILLER FC	4 / 5 LB	JTM
007887	BRATWURST LINK 4-1 FC FROZ	1 / 10 LB	SCHMALZ
918006	CHORIZO CRUMBLES VGT FC	2 / 5 LB	NONNA'S
871601	GYRO MEAT SLICES CKD	4/4 LB	CHICAGO
872422	GYRO SLICES BEEF/LAMB FC	2 / 5 LB	KRONOS
683391	PORK BELLY RUBBED SMOKED	6/1.5 LBA	BROOKWOOD
091834	PORK PULLED CHUNKY CKD	2/5 LB	BROOKWOOD
093035	PORK SHANK FC OSSO BUCO	6/3 LB	FARMLAND
091238	PORK WINGS RIBEEZ FULLY CKD	1/11 LB	HATFIELD
962801	PULLED PORK COOKED FRZ NO SAUCE	4/2.5 LB	SMITHFIELD
870631	RIBS ST LOUIS FC HICKORY	8 / 2PC	SMITHFIELD
008095	VEAL FORESHANK OSSO CKD SAUCE	12/12-16 OZ	CATELLI
413307	TURKEY MEATBALLS .50 OZ FC	2/5 LB	CAROLINA
009498	TURKEY BREAST FC S/O BRWN & SRV	2/10 LBA	MICHIGAN
009450	TURKEY BREAST OVEN BRWN FC	2/8.5 LBA	MIGHIGAN
009873	SKNLSBF RIBEYE STEAK BNLS CHOICE	20/8 OZ	DRISCOLL
091154	PORK BRISKET RIB BITS SMOKED	2/5 LB	SMITHFIELD





## **GAIN EFFICIENCIES**

- SERVE EVERY OUNCE OF PROTEIN PURCHASED
- KNOW EXACT PORTION COST FOR EVERY ITEM
- UNIFORM SIZE & COOKING TIME
- DON'T PAY FOR UNUSED BY-PRODUCT
- INVENTORY BUFFER/FEWER SHORTAGES

## **MAXIMIZE LABOR**

- REDUCE SKILL LABOR COSTS FOR TRIMMING, SKINNING & BONING
- REDUCE LABOR COSTS FOR INVENTORY CONTROL
- LESSEN STAFF SAFETY CONCERNS/LOWER INSURANCE COSTS

## **MANAGE INVESTMENT COSTS**

- SMALLER PHYSICAL INVENTORY
- GREATER EFFECTIVENESS
- REDUCE SPOILAGE
- REDUCE COOLER SPACE & EQUIPMENT NEEDS

## **THE BOTTOM LINE**

At first glance portion control steaks seem more expensive than buying subprimals. However in the long run, they are much more cost effective when considering labor hours, waste, & butchery skills of your team.

Let the Cutshop experts do the work for you!



# PRE -PORTIONED MEATS

ITEM #	DESCRIPTION	PACK SIZE
--------	-------------	-----------



## RIBEYE

009873	BF RIB STEAK BNLS CHOICE	20/8 OZ
871639	BF RIB STEAK BONE/IN CHOICE	10/16 OZ
871666	BF RIB STEAK COWBOY FRNCH CHOICE	10/16 OZ



## TENDERLOIN

008073	BF TENDERLOIN STEAK METRO 6OZ	32/6 OZ
007846	BF TENDERLOIN STK C/C 1855 8OZ	20/8 OZ
871589	BF TENDERLOIN MEDALLION 3PC 9OZ	60/3 OZ



## T-BONE & PORTERHOUSE

871693	BF PORTERHOUSE STEAK CHOICE	10/16 OZ
871694	BF PORTERHOUSE STEAK CHOICE	9/18 OZ
117412	BF TBONE STEAK CHOICE	14/12 OZ
871709	BF TBONE STEAK CHOICE	12/14 OZ



## STRIP STEAK

007793	BF STRIPLOIN B/I C/C ANGUS	10/18 OZ
009452	BF STRIPLOIN BNLS C/C CHOICE	20/8 OZ
007792	BF STRIPLOIN BNLS PUB CHOICE	20/8 OZ



## HANGER STEAK

007867	BF HANGER STK PORTION CHOICE 10OZ	20/10 OZ
007891	BF HANGER STK PORTION CHOICE 8OZ	10/8 OZ



## FLAT IRON STEAK

404648	BF FLAT IRON BLADE STK CHOICE 8OZ	20/8 OZ
091010	BF FLAT IRON BLADE STK CHOICE 10OZ	16/10 OZ



## SHORT RIB

008373	BF SHORT RIBS BNLS CUT	10/16 OZ
009970	BF SHORT RIBS LOLLIPOP 12OZ	14/12 OZ
008814	BF SHORT RIB TOMAHAWK 17OZ	10/16-18 OZ
871054	BF 1/2" KOREAN SHORT RIBS 4OZ	1/10 LB

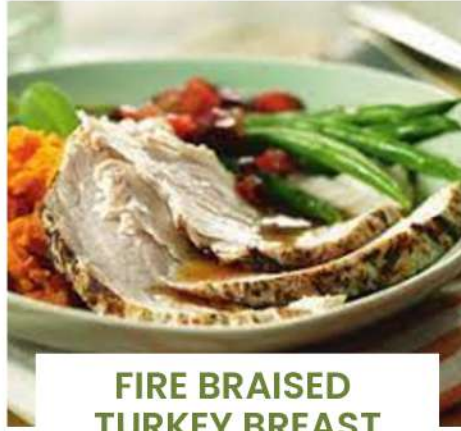


## PORK

532433	PORK RACK CHOP FRNCHD PREM RES.	14/12 OZ
--------	---------------------------------	----------



# FULLY COOKED POULTRY



**FIRE BRAISED  
TURKEY BREAST**  
HORMEL  
#009860 - 27/6 OZ



**FIRE BRAISED  
CHICKEN BREAST**  
HORMEL  
#009745 - 27/6 OZ

410110



**FRIED CHICKEN**  
8 PC BONE IN  
PERDUE, 1/15 LB  
#410564



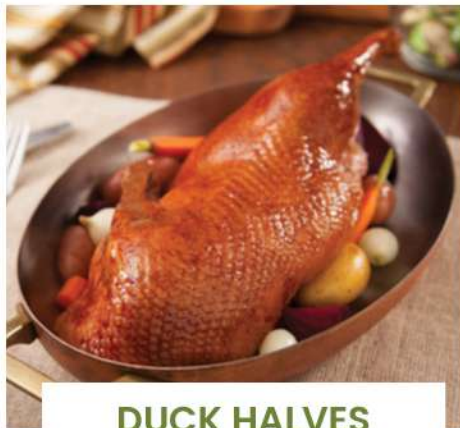
**BREADED CHICKEN  
DRUMSTICKS**  
TYSON, 1/29.5 LB  
#410110



**CHICKEN HALVES  
ROASTED**  
HARVESTLAND, 8/2.87 LB  
#411543



**DUCK WING  
DRUMETTES**  
MAPLE LEAF, 5/2 LB  
#009761



**DUCK HALVES  
ROASTED BONE IN**  
MAPLE LEAF - 12/10.5 OZ  
#009776



**DUCK LEG CONFIT  
PART BONE**  
MAPLE LEAF, 2/12 CT  
#006794



# FULLY COOKED POULTRY



**GRILLED CHICKEN  
BREAST SKEWER**  
HEAT AND SERVE  
EXPRESO, 1/30 CT  
#821180

## 3 REASONS TO ADD FULLY-COOKED CHICKEN TO YOUR KITCHEN

1

### LABOR

Reduce the labor spent managing that prep work and cook times.

2

### SAFETY

There are many uncertainties associated with cooking raw chicken, including cross contamination, over-cooking, or the risk of serving undercooked meat

3

### QUALITY

Depending on who cooks the raw chicken, it's likely to be inconsistent from plate to plate, whether it's overcooked or undercooked.



## CHICKEN BREAST

ITEM #	DESCRIPTION	BRAND	PACK SIZE
400134	CHICKEN BREAST FILETS GRILLED RED LABEL FC	TYSON	40/4 OZ
410532	CHICKEN BREAST FILETS GRILLED RED LABEL FC	TYSON	54/3 OZ
822119	CHICKEN BREAST ITALIAN GRILLED FC	PACKER	1/10 LB

## BREADED CHICKEN FILET

ITEM #	DESCRIPTION	BRAND	PACK SIZE
410350	CHICKEN BREAST FILLET BRD FC	GARIMARK	2/5 LB
410305	CHICKEN BREAST FILET BRD ITALIAN FC	GARIMARK	35/4.7 OZ
410520	CHICKEN BREAST FILET BRD ITALIAN FC	TYSON	34/4.7 OZ
411100	CHICKEN BREAST FILET BRD MILD FC	TYSON	40/4 OZ
410526	CHICKEN BREAST FILET BRD NAE HOMESTYLE FC	TYSON	46/3.5 OZ

## CHICKEN WINGS

ITEM #	DESCRIPTION	BRAND	PACK SIZE
820502	CHICKEN WING OF FIRE CKD	TYSON	2/5 LB
730235	CHICKEN WING ROTISSERIE CKD	PERDUE	2/5 LB
900323	CHICKEN WING ZING BNLS BRD CKD	PIERCE	2/5 LB
821143	CHICKEN WINGETTES CKD 2NDS	BRAKEBUSH	1/10 LB

## DICED CHICKEN

1/2" WHITE & DARK MEAT  
WAYNE FARMS, 1/10 LB  
#007865

1/2" BREAST MEAT  
TYSON, 2/5 LB  
#938012

1/2" BREAST MEAT  
PIERCE, 2/5 LB  
#090007

## CHICKEN STRIPS

BREAST STRIPS CHAR GRILLED  
HARVESTLAND, 2/5 LB  
#411582

BREAST STRIPS GRILLED  
TYSON RED LABEL, 2/5 LB  
#410524

FAJITA BREAST STRIPS W/  
GRILL MARKS  
PIERCE, 1/10 LB  
#821508

## PULLED CHICKEN

BBQ PULLED CHICKEN  
HORMEL, 2/5 LB  
#091235

BREAST MEAT PULLED  
TYSON, 2/5 LB  
#680424

WHITE & DARK MEAT PULLED  
TYSON, 2/5 LB  
#822001



# SEAFOOD

## RAW IQF PORTIONED

ITEM #	DESCRIPTION	PACK SIZE
960617	CATFISH FILLET 5-7 OZ	1/15 LB
960999	CATFISH FILLET 7-9OZ	1/15 LB
362436	COD LOIN RAW IQF 4 OZ	1/10 LB
362434	COD LOIN RAW IQF 6 OZ	1/10 LB
961004	FLOUNDER FILLET IQF 3-5	1/10 LB
960614	HADDOCK FILLETS 6-8 OZ	1/10 LB
25507	MAHI MAHI 8OZ PORTIONS IVP	1/10 LB
963011	MAHI MAHI IQF 6OZ	26/6 OZ
680351	MAHI MAHI PIECES 1-3 OZ	1/10 LB
961318	RED SNAPPER 6-8 OZ FILLET	1/10 LB
961234	SALMON ATLANTIC FILLET 4OZ	40/4 OZ
961625	SALMON ATLANTIC FILLET 8OZ	1/10 LB
961325	SALMON FAROE ISLAND 6 OZ	1/10 LB
301496	SALMON POKEY FRESH CUT	1/10 LB
961611	SEA BASS CHILEAN S/L 8OZ IQF	1/10 LB
961264	TILAPIA FILLET 3-5OZ	1/10 LB
961261	TILAPIA FILLET 5-7OZ	1/10 LB
960415	TUNA POKE CUBES	1/10 LB
961627	TUNA STEAK 4OZ SKNL BNLS	1/10 LB

## COOKED SHRIMP

110435	SHRIMP 13/15 P&D CKD T/ON	5/2 LB
961220	SHRIMP 16/20 P&D CKD T/ON	5/2 LB
101004	SHRIMP 16/20 P&D CKD T/ON WHT	5/2 LB
101005	SHRIMP 21/25 P&D CKD T/ON WHT	5/2 LB
965038	SHRIMP 31/40 P&D CKD T/ON	5/2 LB
965062	SHRIMP 31/40 P&D CKD T/OFF	5/2 LB
962430	SHRIMP 41/50 P&D CKD T/OFF PW	5/2 LB
780269	SHRIMP 100/250 CKD T/OFF	2/5 LB
062003	SHRIMP 250/350 CKD TITI	4/5 LB



## BREADED & BATTERED



**SHRIMP TEMPURA**  
21/25 TAIL ON  
ITEM #480537 - 4/2.5 LB



**SHRIMP COCONUT**  
BREADED 16/20  
ITEM #480525 - 4/2.5 LB



**SHRIMP POPCORN**  
BUTTERMILK  
ITEM #962039 - 4/2.5 LB



**CALAMARI T&T**  
DIPT N' DUSTED  
ITEM #965046 - 6/2 LB



**CALAMARI RINGS**  
BREADED  
ITEM #965066 - 6/2 LB



**BREADED**  
CLAM STRIPS  
ITEM #191288 - 6/1LB LB



**BREADED SCALLOPS**  
26/30 CT  
ITEM #960007 - 4/2.5 LB



**FISH PATTIES 4 OZ**  
BREADED  
ITEM #100012 - 1/10 LB



**COD BREADED RECTANGLE**  
3 OZ  
ITEM #300260 - 1-10 LB



**COD NUGGETS**  
BREADED 1 OZ  
ITEM #901312 - 1/10 LB



# BEER BATTERED SEAFOOD



**BEER BATTERED  
SHRIMP 31/35  
#960627 - 1/10 LB**



**BEER BATTERED  
SHRIMP 28/36  
#480540 - 4/2.5 LB**



**COD  
BEER BATTERED  
#023895 - 1/10 LB**



**CRAFT BEER  
BATTERED COD  
#962455 - 4/2.5 LB**



**BASS PALE ALE  
BATTERED  
COD FILLET  
#960009 - 80/2 OZ**



**CORONA  
BATTERED COD  
ITEM #960032 - 40/4 OZ**



**GUINNESS BATTERED  
SHRIMP 26-30 CT  
#801808 - 1/10 LB**



**YUENGLING  
BATTERED HADDOCK  
#960051 - 27/6 OZ**



# DESSERTS

## SPEED SCRATCH

How do you capture that dessert-craving customer when there's no pastry chef on staff, and the kitchen already is slammed? Some operators are going the speed-scratch route, starting with ready-made components and adding fresh ingredients and flourishes back-of-house to create signature desserts.

### MIXES

ITEM #	DESCRIPTION	BRAND	PACK SIZE
120640	MIX BROWNIE DBL DARK CHOCOLATE	GHIRADELLI	4 / 7.5 LB
120667	MIX BROWNIE FUDGE DECADENT	KRUSTEAZ	6 / 7 LB
123005	MIX CAKE CINNAMON STREUSEL	GENERAL MILLS	6 / 4.66 LB
012236	MIX CAKE DEVILS FOOD	CONTINENTAL	6 / 5 LB
001724	MIX CAKE GINGERBREAD	HOSPITALITY	6 / 5 LB
121223	MIX CAKE LEMON	DUNCAN HINES	12/15 OZ
121277	MIX CAKE RED VELVET	PILLSBURY	1/50 LB
120623	MIX CAKE WHITE COMPLETE	CONTINENTAL	6 / 5 LB
012994	MIX CAKE YELLOW	KRUSTEAZ	6 / 5 LB
120676	MIX DONUT NUGGET CAKE	BAKE N JOY	1 / 50 LB

ITEM #	DESCRIPTION	BRAND	PACK SIZE
012991	MIX CREME BRULEE	PASTRY1	1 / 11 LB
863611	MIX MERINGUE	IRCA	6 / 2.2 LB
682663	MIX MOUSSE CHOCOLATE DARK	PARIS	5 / 2.2#
682668	MIX MOUSSE WHITE CHOCOLATE	PARIS	5 / 2.2#

### FROZEN DOUGHS

ITEM #	DESCRIPTION	BRAND	PACK SIZE
932580	DOUGH FILO #10	KONTOS	24/1 LB
932502	DOUGH FILO #4 14X18	KONTOS	24/1 LB BOX
915512	DOUGH PASTRY PUFF	PILLSBURY	2/15 LB
915125	DOUGH PASTRY PUFF 5X5 SQUARE	PILLSBURY	120/2 OZ
915123	DOUGH PASTRY PUFF 10X15 ZTF	PILLSBURY	20/12 OZ
915124	DOUGH PASTRY PUFF 5X5 SQUARE	PENNANT	120/2 OZ
931009	DOUGH PASTRY PUFF SHEET 10X15	PENNANT	20/12 OZ
477665	DOUGH PIE SHEET FROZEN	PILLSBURY	1/17 LB

### FILLINGS RTU

ITEM #	DESCRIPTION	BRAND	PACK SIZE
112029	CREAM CANNOLI WITH CHOC CHIPS	BROOKLYN	4/1.5 LB
220700	FILLING APPLE	HIGHLAND	6/#10
404005	FILLING BAVARIAN CREAM RTU	DAWN	1 / 35 LB
400627	FILLING BLUEBERRY	HIGHLAND	6/#10
526489	FILLING CHOCOLATE SILK	KARP'S	1 / 20 LB
400692	FILLING PUMPKIN	LIBBY	24 / 15 OZ
681277	FILLING STRAWBERRY	HIGHLAND	6 / #10

## READY- TO FILL

Delicious vessels ready to be filled with mousse, ganache, pastry cream, fruit, and more. The perfect base for your sweetest creations!



### CANNOLI SHELLS

# 147853- Large  
48/1.06 oz, Pannellino  
# 174860- Mini 3"  
120/.5 oz, Siciliano  
# 147861- Chocolate Dip Mini 3"  
120/.6 oz, Siciliano



### SWEET BUTTER TART SHELL

Round, 2"  
1/96 ct, Pidy  
#863090



### TART SHELL MINI

Square, 1.5"  
1/240 ct, Pidy  
#863105



### TART SHELL FLUTED SWEET BUTTER

4"  
72 ct, Pidy  
#863070



### SHELL CUP SPICY ASSORTMENT

1.25"  
1/96 ct, Pidy  
#863114



# INDIVIDUAL DESSERTS

## SIMPLY SERVE

Individual desserts will save you time, labor & money. Pre-portioned sweets make it easy for your culinary team to simply heat & serve without any waste and also leave your customers satisfied at the end of a great meal.



### PEANUT BUTTER EXPLOSION

An combination of fudge brownies, velvety smooth peanut butter mousse, rich chocolate cake & finished with brownie chunks, peanut butter chips & drizzled in chocolate fudge.

#121198, 24/6.75 oz



### LIL RED VELVET

Rich red velvet cake is layered with sweet cream cheese filling and finished with a dark chocolate feather garnish. David's Cookies

#121269 24/5.25 oz



### CHOCOLATE TRILOGY

Enjoy rich chocolate cake layered with dark chocolate, milk chocolate & white chocolate mousse and finished with dark chocolate curls. David's Cookies

#121549, 24/5.75 OZ



### MANGO GUAVA CHEESECAKE

A refreshing duo of brightly flavored mango & guava cheesecakes on a classic graham crust topped with a light mango mousse and finished with toasted almonds. David's Cookies

#121268 24/6 oz



### MINI CHEESECAKE PLAIN

Junior's famous cheesecake in a mini version!

2 oz - #121323 1/24 ct  
4 oz - #121337 2/18 ct



### TIRAMISU

Layers of yellow cake soaked in coffee and dark rum sandwiched with a light mascarpone mousse. Finished with a dusting of cocoa powder and a chocolate covered espresso bean.

#121209, 24/4 oz



### CHOCOLATE LAVA CAKE

A rich, moist hand crafted chocolate ganache is surrounded by a delectable chocolate cake. Simply heat and enjoy! (Heat & Serve) David's Cookies

#121267 24/4 oz



# READY MADE MEALS



**PACKAGED &  
DELIVERED IN A  
HEAT RETAINING  
DISPOSABLE PAN**



**LASAGNA VEGETABLE  
WHITE SAUCE**  
ITEM # 860417 - 4/96 OZ

*Freshly made noodles and whole grains layered with sea salt, spinach, broccoli, carrots, a blend of five cheeses, and breadcrumbs.*



**CREAMED CHIPPED BEEF**  
ITEM # 860209 - 4/76 OZ

*Tender slices of chipped beef set in a rich, delicious lightly seasoned cream sauce.*



**CHICKEN PARMESAN**  
ITEM # 860407 - 4/62 OZ

*Seasoned chicken lightly coated with breadcrumbs, covered in chunky tomato sauce and topped with Parmesan and mozzarella.*



**STUFFED CABBAGE WITH  
BEEF SAUCE**  
ITEM # 860201 - 4/92 OZ

*Seasoned beef, long grain rice and spices hand-folded into tender cabbage leaves, topped with rich, chunky tomato sauce.*



**SALISBURY STEAK WITH  
GRAVY TRAY**  
ITEM # 860211 - 4/69 OZ

*Freshly ground beef mixed with onions, rolled oats, and seasonings, oven-roasted for tender texture and smothered with hearty gravy.*



**MEATLOAF WITH  
BROWN GRAVY**  
ITEM # 860451 - 4/58 OZ

*Ground beef, onions, tomato puree, green peppers and oats, smothered with a savory brown gravy.*



**BEEF STEW**  
ITEM # 860452 - 4/72 OZ

*With sliced carrots, russet potatoes, peas, onions and spices.*



**MACARONI & CHEESE  
WHITE CHEDDAR**  
ITEM # 860208 - 4/64 OZ

*Al dente cavatappi pasta smothered in a creamy white cheddar sauce featuring 9-month aged Sharp Cheddar Cheese from New York.*



**SCALLOPED POTATOES**  
ITEM #850402- 4/4.5 LB

*Slices of select potatoes in smooth and savory white sauce sprinkled with chives.*



## This image shows a full page of blank, lined paper. It features approximately 28 horizontal black lines spaced evenly across the page, typical of standard notebook paper. The lines are thin and extend from the left edge to the right edge. There are no margins, text, or other markings on the page.



[illegible]









[WWW.DRISCOLLFOODS.COM](http://WWW.DRISCOLLFOODS.COM)