

# Fine Dining

A MENU GUIDE



*Driscoll*  
FOODS





# CONTENTS

---

- 2 CHARCUTERIE
- 4 CHEESE
- 9 GROCERY
- 14 FRESH PRODUCE
- 18 PORTION CONTROL MEATS
- 21 SEAFOOD
- 24 DESSERTS
- 30 BEVERAGES



CHARCUTERIE

# prosciutto & bulk

---



**PROSCIUTTO SAN DANIELE**  
 PARMACOTTO  
**ITEM #231463**  
 1/16.5 LBA



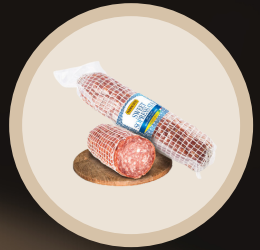
**PROSCIUTTO ITALIANO**  
 PARMACOTTO  
**ITEM #231461**  
 1/13 LBA



**PROSCIUTTO DI PARMA**  
 PARMACOTTO  
 Aged 14 months  
**#231459**, 1/16.5 lba



**PORCHETTA AROSTO**  
 PARMACOTTO  
**ITEM #231471**  
 2/6 LB



**SWEET SOPRESSATA**  
 PARMACOTTO  
**ITEM #231475**  
 2/3.5 LB



**HOT SOPRESSATA**  
 PARMACOTTO  
**ITEM #231477**  
 2/3.5 LB



**TOSCANO SALAMI**  
 PARMACOTTO  
**ITEM #231479**  
 2/3.5 LB



**MORTADELLA WITH PISTACHIO**  
 PARMACOTTO  
**ITEM #231473** 2/11 LB



**SPECK ALTO ADIGE**  
 RECLA  
**ITEM #090447**  
 2/5 LB

# chubs & slices

---



**HOT SOPRESSATA CHUB**  
 PARMACOTTO  
**ITEM #231507**, 12/8 OZ



**PROSCIUTTO DI PARMA**  
 PARMACOTTO  
**ITEM #231485**  
 12/3 OZ



**PROSCIUTTO ITALIANO**  
 PARMACOTTO  
**ITEM #231487**  
 12/3 OZ



CHEESES

## Asiago

ITEM #	BRAND	DESCRIPTION	PACK SIZE
30901	BELGIOIOSO	ASIAGO HALF WHEEL	1/12 LBA
30198	CUCINA ANDOLINA	ASIAGO SHREDDED	4/5 LBA
90452	SILANO	ASIAGO FRESCO DOP	1/32 LB
90478	SILANO	ASIAGO VECCHIO 1/4	4/3 LB

## Brie

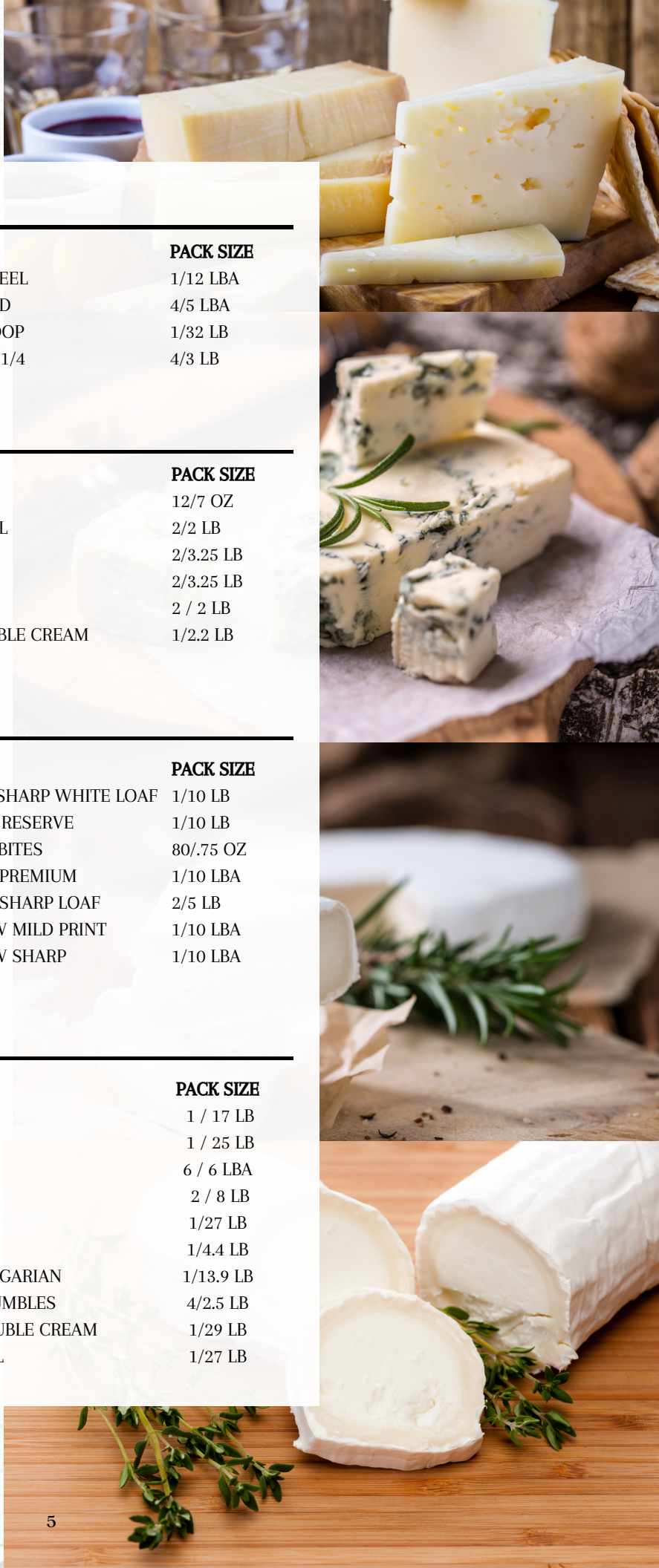
ITEM #	BRAND	DESCRIPTION	PACK SIZE
30260	EIFFEL TOWER	BRIE BABY	12/7 OZ
30207	PRESIDENT	BRIE PLAIN WHEEL	2/2 LB
107584*	PRESIDENT	BRIE SPREAD	2/3.25 LB
30232	PRESIDENT	BRIE SPREAD	2/3.25 LB
30214	ALOUETTE	BRIE WHEEL	2 / 2 LB
31502	EIFFEL TOWER	BRIE WHEEL DOUBLE CREAM	1/2.2 LB

## Cheddar

ITEM #	BRAND	DESCRIPTION	PACK SIZE
30989	CABOT	CHEDDAR EXTRA SHARP WHITE LOAF	1/10 LB
36013	OLD CROC	CHEDDAR GRAND RESERVE	1/10 LB
36025	OLD CROC	CHEDDAR SHARP BITES	80/.75 OZ
31029	CABOT	CHEDDAR WHITE PREMIUM	1/10 LBA
31091	CABOT	CHEDDAR WHITE SHARP LOAF	2/5 LB
31042	CABOT	CHEDDAR YELLOW MILD PRINT	1/10 LBA
31044	CABOT	CHEDDAR YELLOW SHARP	1/10 LBA

## Feta

ITEM #	BRAND	DESCRIPTION	PACK SIZE
34203	FANTIS	CHEESE FETA	1 / 17 LB
35004	ARGO	CHEESE FETA	1 / 25 LB
34204	ARGO	CHEESE FETA	6 / 6 LBA
31802	ARGO	CHEESE FETA TUB	2 / 8 LB
350003	OLYMPUS	FETA CHEESE	1/27 LB
30245	REAL GREEK	FETA CHEESE	1/4.4 LB
35000	PACKER	FETA CHEESE BULGARIAN	1/13.9 LB
33509	STELLA	FETA CHEESE CRUMBLES	4/2.5 LB
952572	DIVANI	FETA CHEESE DOUBLE CREAM	1/29 LB
33510	STELLA	FETA CHEESE PAIL	1/27 LB



# specialty cheeses



**MONTASIO STAGIONATO  
DOP 1/4**  
4/8.5 lb, #90475

A dry, grainy and almost crumbly cheese. The taste is strong and aromatic. Pairs well with red wines.



**THREE SISTERS COW,  
GOAT, SHEEP MILK**  
2/2.5 kg, #090455

Made from a blend of sheep, cow and goat's milk. Pairs well with Southern French wine



**UBRIACO CLASSICO 1/4  
SINGLE**

4/3 lb, #090491  
Best served in crumbles or shavings with a glass of Prosecco or any aged, red wine.



**BONFIRE CHEESE MARIN**  
10/6.4 oz, #30381

A mild & creamy soft ripened grilling cheese. Toss them into salads, top a sandwich, serve them hot and creamy with crackers.



**BONFIRE CHEESE MILD**  
10/6.4 oz, #30379

A semi-soft grilling cheese with a herb marinade. Toss them into salads, top a sandwich, serve them hot and creamy with crackers



**DON JUAN MANCHEGO**  
2/7 lb, #030243

Don Juan Manchego the mildest version of this Spanish classic. Pairs well with a Cava, or a Spanish white based on Verdejo or Viura.



**PECORINO ROMANO WHEEL**  
1/56 lb, #090499

Pecorino Romano is a hard, salty, sheep's milk cheese. It is also great for melting over polenta, vegetables, porcini mushrooms, pastas, and quiches.



**CASTELMAGNO**  
1/15 lb, #090495

It is appreciated as a table cheese and used in the preparation of typical Italian dishes such as gnocchi.



**TALEGGIO STELLA ALPINA**  
1/5 lb #090466

A DOP soft, cow's milk cheese with a soft, thin crust. The paste has a double-texture: it is soft, slightly stringy and straw-yellow in color under the crust; firm, crumbly and white colored inside.



**PECORINO W/ TRUFFLE**  
3/2 lb, #090489

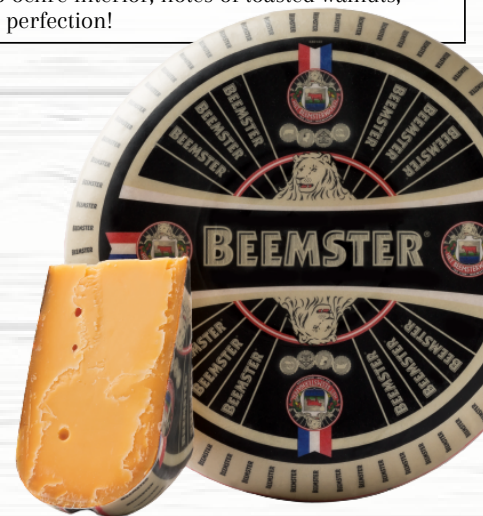
A semi-soft sheep's milk cheese flavored with selected truffle "Scorzzone" and "Bianchetto", finely chopped and in small flakes to give more texture and taste.

## Beemster Gouda

Item #030278

### Aged 18 Months

Beemster Classic (aged 18-months) is considered the classic Dutch cheese throughout Holland. Its complex flavors develop slowly as it matures for a year and a half in our 100+ year-old traditional warehouse. A firm texture with some crystallization, a deep ochre interior, notes of toasted walnuts, and a brown-butter finish equal perfection!





# specialty cheeses



## CRUCOLO CHEESE 1/4

4/7.45 lb, #090476

Artisanal Semi Soft Cow's Milk Cheese aged 60 days with rich buttery yet creamy texture  
Pair with wine jellies and mostarda



## PROVOLONE VALPADANA

1/12 lb, #090463

Hard Cow's Milk Cheese- sharp yet delicate, yellowish color, aged over 10 months  
Pairs well with young, fruity wines.



## PRIMOSALE TARTUFO

6/2 lb, #090448

Semi Soft Sheep's Milk Cheese Stuffed with Truffles  
Pairs well with cold meats & salami and red wine.



## PRIMOSALE FANTASIA

2/5 lb, #090457

Semi Soft Sheep's Milk Cheese Stuffed with Peppercino, Olives, and Arugula  
It's the perfect table cheese.



## PRIMOSALE PISTACHIO

2/5 lb, #090455

Semi Soft Sheep's Milk Cheese Stuffed with Pistachios. Great addition to an antipasto platter and or on a cheese board!



## CAMBOZOLA TRIPPLE CREAM

2/5lb, #030370

A triple cream soft-ripened cheese with delicate blue veining.  
Pairs well with Pinot Noir.



## BLUE CHEESE PREM GRAND NOIR

1/5.5 LB, #30377

Aged in its waxy black mantle like wine in a cask. Ideal for fine dining, top-quality cheese platters or to accompany high-class drinks.



## TOM PIEMONTESE

2/5lb, #030370

Semi Soft cow's milk cheese, sweet, tangy, and sharp.  
Pairs well with strong reds such as a Cabernet Sauvignon and Light White Wines such as Pinot Grigio.



## MANCHEGO CURADO WHEELS

2/6.6 lb, #3208

Made from 100% sheep milk aged over 2 months  
Pairs well with fruits, and nuts.



## MONTASIO STAGIONATO 1/4

4/3.5 lb, #090475

A DOP semi-soft cow's milk cheese with a mild creamy flavor. It is known for its delicate and slightly acidic taste and Aged minimum 365 days.



## GORGONZOLA PICANTE DOP

4/3 lb, #090450

Made from pasteurized cow's milk. Aged for two/three months and pierced several times to favor the development of molds.



## GORGONZOLA DOLCE DOP

4/3 lb, #090464

Gorgonzola Dolce is a soft, blue, buttery cheese made from pasteurized cow's milk. Gorgonzola Dolce pairs well with soft red and white wines.

## Fontina

ITEM #	BRAND	DESCRIPTION	PACK SIZE
90449	ST CLEMENS	FONTINA DANISH RED WAX WHEEL	1/15 LB
31124	BELGIOIOSO	FONTINA DELI CUT	2/6 LB

## Goat Cheese

ITEM #	BRAND	DESCRIPTION	PACK SIZE
31128	CHEESEPOP	CHEESE GOAT PLAIN LOG	12 / 10.5 OZ
30262	AMMERLANDER	GOAT CHEESE CRUMBLD	2/2 LB
31210	DUTCH MILL	GOAT CHEESE LOG	2/2.2 LB

## Gorgonzola

ITEM #	BRAND	DESCRIPTION	PACK SIZE
34414	SAPUTO	CHEESE GORGONZOLA CRUMBLE	1 / 5 LB
90464	CAROZZI	CHEESE GORGONZOLA DOLCE 1/8	4/3 LB
30217	BELGIOIOSO	GORGONZOLA CRUMBLE	4/5 LB
90450	CAROZZI	GORGONZOLA PICCANTE/MOUNTAIN	4/3 LB

## Gouda

ITEM #	BRAND	DESCRIPTION	PACK SIZE
30278	CAROZZI	CHEESE CLASSIC AGED 18 MO	1/6 LBA
30031	SOMMER MAID	CHEESE BITES GOUDA	9/2.2 OZ
30405	CELEBRITY	CHEESE GOUDA LOAF	4 / 6.5 LB
30203	CELEBRITY	CHEESE GOUDA SMOKED LOG	4 / 6 LB

## Grana Padano

ITEM #	BRAND	DESCRIPTION	PACK SIZE
030269	BELGIOIOSO	GRANA AMERICAN	2/8 LB
860439	EMMA	GRANA PADANO 1/8 WHEEL 14 MO	2/10 LBA

## Gruyere

ITEM #	BRAND	DESCRIPTION	PACK SIZE
30548	ROTH KASE	GRUYERE BURKASE SLICES	4/2.5 LB
30233	AMMERLANDER	GRUYERE LOAF (GERMANY)	2/6.5 LB
30204	MIFROMA	GRUYERE SWISS	2/6 LB

## Harvarti

ITEM #	BRAND	DESCRIPTION	PACK SIZE
031009	ATALANTA	HAVARTI WITH DILL	1/9 LBA

## Mascrapone

ITEM #	BRAND	DESCRIPTION	PACK SIZE
031025	BELGIOIOSO	MASCARPONE	6/1 LB
030509	BELGIOIOSO	MASCARPONE BULK	4/5 LB

## Mozzarella

ITEM #	BRAND	DESCRIPTION	PACK SIZE
31247	BELGIOIOSO	BURRATA FRESH 2-4 oz	6/8 OZ
30268	BELGIOIOSO	MOZZARELLA CILIEGINE	2/3 LB
30303	BELGIOIOSO	MOZZARELLA CURD PLATINUM	2/20 LB
30610	NONNA'S	MOZZARELLA FRESH 1LB	2/3 LB
30607	BELGIOIOSO	MOZZARELLA FRESH SLICED	8/1 LB
30666	BELGIOIOSO	MOZZARELLA LOAF FRESH	2/5 LB
30557	BELGIOIOSO	MOZZARELLA LOAF WHOLE MILK	8/5 LB
30617	BELGIOIOSO	MOZZARELLA LOG	8/1 LB
31246	BELGIOIOSO	MOZZARELLA OVOLINI	2/3 LB
30620	BELGIOIOSO	MOZZARELLA PEARLS FRESH	12/8 OZ
35018	CEDAR VALLEY	MOZZARELLA PS LOAF	8/6 LBA

## Parmesan

ITEM #	BRAND	DESCRIPTION	PACK SIZE
031036	BELGIOIOSO	PARMESAN SHAVED	4/5 LB
030212	BELGIOIOSO	PARMESAN SHREDDED	4/5 LB
030514	BELGIOIOSO	PARMESAN WHEEL	1/24 LBA
860435	EMMA	REGGIANITO (WHEEL) ARGENTINA	2/15 LBA
034816	EMMA	REGGIANO PARMIGIANO 22 MO	1/19-23 LB

## Pecorino Romano

ITEM #	BRAND	DESCRIPTION	PACK SIZE
034819	ITALIA	PECORINO ROMANO WHEEL	4/12 LBA

## Ricotta

ITEM #	BRAND	DESCRIPTION	PACK SIZE
031251	ANTONIO	CHEESE IMPASTATA RICOTTA	1/10 LB
035023	ZERTO	CHEESE RICOTTA SALATA	4/7 LB
035014	GALBANI	CHEESE RICOTTA WM	6/3 LB



GROCERY



## Artichokes

ITEM #	BRAND	DESCRIPTION	PACK/SIZE
404015	ACADEMIA	ARTICHOKE WITH STEM IN OIL	6/3 KILO
530591	ROLAND	ARTICHOKE HEARTS 40/50CT	6/88 OZ
530500	ROLAND	ARTICHOKE HEARTS MARIN/QTR	6/67 OZ
530603	RUBY	ARTICHOKE HEARTS QUARTERED	6/3 KG

## Anchovies

ITEM #	BRAND	DESCRIPTION	PACK/SIZE
109598	MARTEL	ANCHOVIES WHITE MARINATED	4/1 KG
192418	ROLAND	ANCHOVY FILLETS CANNED OIL	12/14 OZ
031047	WHITE CROWN	ANCHOVIES FLAT FILLETS	24/28 OZ
192413	ROLAND	ANCHOVY PASTE	12/1 LB

## Canned Peppers

ITEM #	BRAND	DESCRIPTION	PACK/SIZE
341219	AMBROSIA	WATER CHESTNUTS SLICED	6/10#
391209	ROLAND	PEPPERS ROASTED STRIPS	6/10#

## Dried Fruits & Nuts

ITEM #	BRAND	DESCRIPTION	PACK/SIZE
340601	PACKER	PECAN PIECES	1/30 LB
550446	PACKER	WALNUT HALVES & PIECES	1/25 LB
340600	RCN	ALMONDS SLICED BLANCHED	1/5 LB
561242	RCN	NUTS PINE	1/5 LB
340612	RCN	WALNUT HALVES AND PIECES	1/5 LB

## Seasoning

ITEM #	BRAND	DESCRIPTION	PACK/SIZE
920571	GOYA	SEASONING ADOBO WITH PEPPER	24/8 OZ
481359	MAGIC SEAS	SEASONING BLACKENED STEAK	4/20 OZ
481264	EMERALD	SEASONING POULTRY	12/1 LB
480101	AMBROSIA	SEASONING SAFFRON	1/1 OZ
432002	ROLAND	SEASONING SEA SALT COARSE	12/26.5 OZ
432003	ROLAND	SEASONING SEA SALT FINE	12/26.5 OZ
481234	EMERALD	SEASONING SEASONING ITALIAN	12/6 OZ

## Asian Specialties

ITEM #	BRAND	DESCRIPTION	PACK/SIZE
481204	EMERALD	CHILI POWDER	12/18 OZ
391508	KIKKOKIN	KIMCHI PICKLED VEGETABLE	6/64 OZ
310555	KEWPIE	MAYONNAISE KEWPIE	4/1 GAL
551249	ROLAND	MISO PASTE WHITE GTF ZTF	10/2.2 LB
480513	EMERALD	PEPPER RED CRUSHED	4/4 LB
541205	ROLAND	PICKLED GINGER PINK	12/16 OZ
460412	KIKKOMAN	SAUCE SOY LITE LRS	6/1/2 GAL
517223	EMERALD	SEAWEED SALAD FROZEN	4/2 KG
481346	EMERALD	SEEDS SESAME BLACK	12/18 OZ
541206	PACKER	WASABI POWDER	10/2.2 LB

## Imported Pasta

ITEM #	BRAND	DESCRIPTION	PACK/SIZE
370180	DECECCO	CAVATAPPI	4/5 LB
371027	DECECCO	EGG PAPPARDELLE	12/8.8 OZ
371097	DECECCO	ELBOWS	20/1 LB
370174	DECECCO	FARFALLE	4/5 LB
372096	DECECCO	FETTUCCHINE NEST	12/8.8 OZ
371030	DECECCO	FUSILLI	4/5 LB
371243	DECECCO	GEMELLI	12/1 LB
370178	DECECCO	MEZZA RIGATONI	4/5 LB
372088	DECECCO	ORECCHIETTE	4/5 LB
370175	DECECCO	PENNE RIGATE	4/5 LB
371220	DECECCO	PENNE RIGATE	12/1 LB
371114	DECECCO	RIGATONI	12/1 LB
370177	DECECCO	SPAGHETTI	4/5 LB
371016	DECECCO	SPAGHETTI #12	20/1 LB

## Oils

ITEM #	BRAND	DESCRIPTION	PACK/SIZE
350649	CORTO	OIL BLND 51/49 SOY OLIVE	1/10 LTR
350648	CORTO	OIL COOKING LA PADELLA	1/10 LTR
350650	CORTO	OIL OLIVE EXTRA VIRGIN	11/10 LTR
350675	PACKER	OIL OLIVE EXTRA VIRGIN	4/3 LTR
351013	DEL DESTINO	OIL SESAME 100% PURE	10/56 OZ
350614	ROLAND	TRUFFLE OIL WHITE	6/8.4 OZ
350615	PONS	TRUFFLE OIL WHITE	6/8.5 OZ

## Capers

ITEM #	BRAND	DESCRIPTION	PACK/SIZE
391206	DEL DESTINO	CAPER BERRY	6/64 OZ
031116	DEL DESTINO	CAPERS CAPOTES	6/32 OZ
031115	DEL DESTINO	CAPERS NON-PAREIL	6/32 OZ

## Pickles & Peppers

ITEM #	BRAND	DESCRIPTION	PACK/SIZE
390430	DEL DESTINO	PEPPERONCINI	4/1 GAL
390410	DEL DESTINO	PEPPERONCINI SLICED	2/1 GAL
390431	EIFEEL TOWER	CORNICHONS	6/4.2 KG
480425	ROLAND	PEPPERCORNS GREEN BRINE	24/8.82 OZ

## Olives

ITEM #	BRAND	DESCRIPTION	PACK/SIZE
360629	FRUTTO D'ITALIA	OLIVE PITTED CASTELVETRANO	2/4.4 LB
360630	FRUTTO D'ITALIA	OLIVES PITTED MEDITERRANEAN	2/4 LB
363003	KIKI	OLIVE KALAMATA LARGE	1/8 LB
363015	KONTOS	OLIVE KALAMATA LARGE PITTED	1/8 LB
530651	PACKER	OLIVES KALAMATA PITTED LARGE	1/22 LB

## Tomatoes

ITEM #	BRAND	DESCRIPTION	PACK/SIZE
520612	ALTA CUCINA	TOMATO PLUM WHOLE ALTA CUCINA	6/#10
520601	CARMELINA	TOMATOES ITALIAN WHOLE PEELED	6/91 OZ
031119	DEL DESTINO	TOMATOES SUNDRIED HALVES	4/5 LB
031117	DEL DESTINO	TOMATOES SUNDRIED STRIPS	4/5 LB
520625	FULL RED	DICED TOMATOES IN JUICE	6/#10
520634	FULL RED	MARINARA SAUCE	6/#10
520633	FULL RED	TOMATO PASTE FULL RED	6/#10
520618	FULL RED	TOMATO SAUCE FULL RED	6/#10
392404	ROLAND	TOMATO SUN DRIED IN OLIVE OIL	6/2 LB
520617	SAPORITO	TOMATO STRIP FILETTO POMODORO	6/#10
520602	STAN 7/11	TOMATO GROUND 7/11	6/#10
520609	SUZY BELL	TOMATO PUREE	6/#10
520673	TOMATO MAGIC	TOMATO GROUND MAGIC	6/#10
520664	VALOROSO	TOMATO WHOLE PEELED VALOR	6/#10
852706	WHITE TOQUE	TOMATOES ROASTED RED USA	4/2.5 LB

## Glaze

ITEM #	BRAND	DESCRIPTION	PACK/SIZE
400682	ROLAND	BALSAMIC GLAZE	6/12.9 OZ
400687	ROLAND	BALSAMIC GLAZE	4/27.2 OZ
400684	ROLAND	FIG BALSAMIC GLAZE	6/12.9 OZ

## Paste

ITEM #	BRAND	DESCRIPTION	PACK/SIZE
552412	ROLAND	CHIPOTLE PEPPER PASTE	24/7 OZ
192413	ROLAND	ANCHOVY PASTE	12/1 LB
481316	ROLAND	TAHINI PASTE	12/16 OZ
421011	ROLAND	TAHINI PASTE PAIL	1/40 LB
390437	ROLAND	RED CURRY PASTE	24/6.8 OZ

## Sauces

ITEM #	BRAND	DESCRIPTION	PACK/SIZE
140604	ROLAND	MANGO CHUTNEY MAJOR GREY	12/32 OZ
480102	COLMANS	MUSTARD POWDER	12/1 LB
160427	CLOVIS	MUSTARD WHOLE GRAIN	2/8.16 LB
160586	ROLAND	SAUCE CHILI SWEET	2/1 GAL
552403	ROLAND	SAUCE CHILI SWEET THAI STYLE	6/2 LTR
421016	ROLAND	SAUCE HONEY GARLIC FUSION	2/1 GAL
140610	AMBROSIA	SAUCE MELBA	12/32 OZ
463008	MAE PLOY	SAUCE SWEET CHILI	12/32 OZ
551401	HUY FONG	SAUCE SRIRACHA	12/28 OZ

## Vinegar

ITEM #	BRAND	DESCRIPTION	PACK/SIZE
551232	DON BRUNO	VINEGAR SHERRY AGED	4/5 LTR
550512	PACKER	VINEGAR SHERRY MODENA	2/5 LTR
550434	REIMS	VINEGAR CHAMPAGNE	2/5 LTR
550504	ROLAND	VINEGAR BALSAMIC WHITE	2/5 LTR
550417	ROLAND	VINEGAR RED WINE	4/5 LTR
551203	ROLAND	SHERRY VINEGAR	12/25.4 OZ
550409	ROLAND	VINEGAR RICE WINE	12/20 OZ
550411	PACKER	VINEGAR RICE WINE PET	4/1 GAL

# glazes, olives & more





# rice & grains

## Polenta

ITEM #	BRAND	DESCRIPTION	PACK/SIZE
205046	ROLAND	POLENTA	4/5 LB
205049	ROLAND	POLENTA MED QUICK COOK	12/8.8 OZ

## Farro

ITEM #	BRAND	DESCRIPTION	PACK/SIZE
031111	AGRIBOSCO	FARRO ITALIAN PEARLED OGC	12/1 LB
205030	ROLAND	FARRO PEARLED	12/17.6 OZ
421226	INHARVEST	FREEKAH GREEN WHEAT	1/25 LB

## Couscous

ITEM #	BRAND	DESCRIPTION	PACK/SIZE
420606	ROYAL	COUSCOUS	1/10 LB
421015	AMBROSIA	COUSCOUS ISRAELI TOASTED	4/5 LB
421005	ROLAND	COUSCOUS ISRAELI	4/5 LB

## Quinoa

ITEM #	BRAND	DESCRIPTION	PACK/SIZE
551429	PACKER	QUINOA RED	1/55 LB
551243	ROLAND	QUINOA RED ANDEAN	2/5 LB
550437	PACKER	QUINOA TRI COLOR	2/5 LB
551216	ROLAND	QUINOA WHITE	12/12 OZ
551426	PACKER	QUINOA WHITE	1/25 LB

## Rice

ITEM #	BRAND	DESCRIPTION	PACK/SIZE
420605	ROYAL	RICE ARBORIO	1/10 LB
420604	ROYAL	RICE BASMATI	1/20 LB
420607	ROYAL	RICE BASMATI SELA	1/10 LB
030020	CAMPANINI	RICE BLACK ITALIAN	12/1.15 LB
420601	ROLAND	RICE JASMINE	1/20 LB
420603	ROYAL	RICE WHITE JASMINE THAI	1/25 LB
550411	PACKER	RICE WINE VINEGAR PLASTIC	4/1 GAL
421555	PACKER	RISOTTO RICE (ARBORIO)	10/35 OZ
172470	ROLAND	VERMICELLI NOODLE RICE WHT	12/8.8 OZ



FRESH PRODUCE



## Assorted Produce

ITEM #	DESCRIPTION	PACK/SIZE
107496	ARTICHOKE JERUSALEM "SUNCHOKE"	1/5 LB
107490	ARTICHOKE FRESH 24 CT	1/24 CT
107499	ASPARAGUS JUMBO	1/1/2 BX
107502	ASPARAGUS PENCIL	1/1/2 BX
107495	ASPARAGUS STANDARD	1/11 LB
107497	ASPARAGUS WHITE	1/1/2BX
107110	BEANS FRENCH HARICOTVERT	1/5 LB
109711	ENDIVE BELGIUM	1/10 LB
107114	FAVA BEANS	1/10 LB
106252	FIDDLEHEAD FERNS	1/1LB
107856	FRENCH BEANS CLIPPED *	1/5 LB
530682	HEARTS OF PALM	12/28 OZ
751069	LOTUS ROOT	1/10 LB
107552	MALANGA (TARO ROOT)	1/40 LB
750272	MUSHROOM CELLO PACK *	10/10 OZ
751061	MUSHROOM CHANTERELLE *	1/5 LB
107523	MUSHROOM ENOKI	1/1CASE
789254	MUSHROOM FOODSERVICE	1/10 LB
109900	MUSHROOM GOURMET BLEND *	1/5 LB
750290	MUSHROOM OYSTER	1/5 LB
109895	MUSHROOM SHITAKE #1	1/3 LB
751040	MUSHROOM SILVER DOLLAR	1/10 LB
755255	MUSHROOMS PORCINI FRESH *	1/3 LB
109822	ONION PEELED WHITE PEARL*	1/5 LB
109813	ONIONS CIPOLINI PEELED *	1/5 LB
750291	OYSTER MUSHROOM KING *	1/3 LB
109192	POTATO FINGERLINGS	1/50 LB
107537	POTATO FINGERLINGS TRI COLOR	1/50 LB
109200	POTATO MARBLE TRI COLOR	1/50 LB
982011	SQUASH GREEN PATTY PAN *	1/5 LB
109966	TOMATO GRAPE TRI COLOR	1/12 CT
109820	TOMATO GRAPE YELLOW *	12/PT
755555	TOMATO MIX MEDLEY	12/PT
109827	TOMATO YELLOW ON THE VINE	1/CS
109835	TOMATO YELLOW PEAR	1/CS
109815	TOMATOES GREEN	1/15 LB
751212	YELLOW WAX BEANS	10/LB
104002	YUCCA WAXED	1/40 LB

\*PRE-ORDER ITEM





**Strawberries Fresh**  
Item# 109860  
8/1 lb



**Strawberries Stem**  
Item #109867  
4/1 lba



**Pomegranate Seeds**  
Item# 109417  
12/4.4 oz



**Pomegranate\***  
Item# 109872  
1/cs



**Cherries Fresh 10 Row**  
Item# 109865  
1/cs



**Raspberries Fresh**  
Item# 109862  
12/1/2 pt



**Asian Pears**  
Item# 753911  
1/16 ct



**Grapes Champagne\***  
Item# 752544  
1/10 lb



**Blood Oranges**  
Item# 753559  
1/25-30 ct



**Fresh Peaches**  
Item# 753802  
1/cs



**Nectarines Loose**  
Item # 753100  
1/80-100 ct



**Peaches White\***  
Item# 753803  
18/6 ct



**Mint Micro\***  
Item# 751669  
1/8 oz



**Spicy Mustard Micro\***  
Item# 106995  
1/8 oz



**Lettuce Mache**  
Item# 751270  
1/3 lb



**Frisee Italian**  
Item# 752572  
1/3 lb



**Lettuce Baby Gem**  
Item# 752558  
24/24 ct



**Lettuce Baby Iceberg**  
Item# 109920  
1/40 ct



**Wheat Grass Fresh**  
Item# 109715  
1/flat



**Baby Mix Artisan**  
Item# 751903  
1/8 lb



**Baby Fennel\***  
Item # 751256  
1/24 ct



**Anise (Fennel)**  
Item# 751255  
24/bunch



**Baby Bok Choy**  
Item# 751076  
1/10 lb



**Bay Leaves Fresh**  
Item# 485084  
1/1 lb



**Micro Cut Rainbow Mix**  
Item# 109885  
1/8 oz



**Micro Shiso Leaves**  
Item# 109417  
12/4.4 oz



**Kalettes Lollipop**  
Item# 107553  
1/4 lb



**Baby Kale**  
Item# 109727  
1/12 ct



**Blackberries**  
Item# 109770  
12/1/2 pt



**Blueberries Fresh**  
Item# 109871  
12/1 pt



**Eggplant Baby Imported**  
Item# 109652  
11/11 ea



**Micro Cut Beet Bull Blood**  
Item# 109924  
1/8 oz



**Potato Baby Garnet Yams**  
Item# 107592  
1/10 lb



**Eggplant Japanese\***  
Item# 751045  
1/10 lb



**Purple Potato**  
Item# 765626  
1/50 lb



**Radish Watermelon**  
Item# 106222  
1/10 lb



**Papaya Ripe**  
Item# 751158  
1/10 lb



**Apricots Fresh**  
Item# 109857  
1/cs



**Carrots Peeled with Tops**  
Item# 751078  
1/5 lb



**Baby Gold Beets**  
Item# 751240  
1/cs



**Fresh Meyer Lemons\***  
Item# 109991  
1/36 lb



**Star Fruit**  
Item# 109870  
1/cs



**Squash Yellow Patty Pan**  
Item# 751014  
1/5 lb



**Kumquats**  
Item# 109452  
1/10 lb



**Nasturtium Flower\***  
Item # 752338  
1/50 ct



**Micro Cut Arugula\***  
Item# 109923  
1/8 oz



**Micro Cut Basil\***  
Item# 109929  
1/8 oz



**Micro Cut Cilantro**  
Item# 109925  
1/8 oz



**Mizuna Micro Green**  
Item# 109915  
1/8 oz



**Banana Leaves Frozen**  
Item# 106552  
16/1 lb



**Lemon Leaves\***  
Item# 109935  
1/bnch



**Lime Leaves Kaffir\***  
Item# 109451  
1/1 lb



**Lemon Grass**  
Item# 751267  
1/1 lb



**Turnip Baby**  
Item# 752559  
12/pc



**Chevril\***  
Item# 751261  
1/4 oz



**Ramps\***  
Item# 109727  
1/12 ct



**Fresh Okra\***  
Item# 751039  
1/15 lb



**Basil Thai\***  
Item# 750785  
1/lb



**Zucchini Green Baby**  
Item# 982015  
1/cs



**Leeks Baby\***  
Item# 753300  
12/bnch



**Fresh Medjoul Dates**  
Item# 521299  
1/11 lb



**Plums Black/Red**  
Item# 754400  
1/cs



**Figs Fresh 1/2 Pint\***  
Item# 755205  
12/1 ct



**Micro Cut Amaranth Red\***  
Item# 109919  
1/8 oz



**Beets Bunched\***  
Item # 751245  
1/cs



**Candy Stripe Beets\***  
Item# 755156  
1/25 lb



**Radicchio**  
Item# 109723  
9/heads



**Carrot Tri Color with Top\***  
Item# 751337  
1/5 lb



**Heirloom Tomatoes**  
Item# 751136  
1/10 lb



**Confetti Flowers\***  
Item# 751285  
1/50 ct



**Edible Flowers (Orchids)\***  
Item# 751273  
1/50 ct



**Edible Flowers (Pansies)\***  
Item# 751248  
1/50 ct



PORTION CONTROL  
MEATS



## Skirt Steak

---

ITEM #	DESCRIPTION	PACK/SIZE
91061	BEEF SKIRT STEAK UNPEELED CHOICE	1/10 LBA
91105	BEEF SKIRT STEAK UNPEELED	6/8 PC
8999	BEEF SKIRT STEAK PORTION CHOICE	10/10 OZ
9042	BEEF SKIRT STEAK PORTION CHOICE	14/12 OZ
8991	BEEF SKIRT STEAK PORTION CHOICE	16/10 OZ
91014	BEEF SKIRT STEAK PORTION CHOICE	20/8 OZ
8995	BEEF SKIRT STEAK PORTION CHOICE	30/5 OZ

## Strip Steak

---

ITEM #	DESCRIPTION	PACK/SIZE
8013	BEEF STRIPLOIN BONE-IN ANGUS DRY AGED	12/14OZ
7794	BEEF STRIPLOIN BONE-IN ANGUS DRY AGED	9/18 OZ
117916	BEEF STRIPLOIN BONE-IN CENTER CUT ANGUS	10/16 OZ
7796	BEEF STRIPLOIN BONE-IN CENTER CUT ANGUS	8/20 OZ
8092	BEEF STRIPLOIN BONE-IN CENTER CUT PRIME	9/18OZ
910127	BEEF STRIPLOIN BONE-IN PRIME DRY AGED	10/17-18OZ
871557	BEEF STRIPLOIN BONELESS CENTER CUT ANGUS	20/8 OZ
871568	BEEF STRIPLOIN BONELESS CENTER CUT ANGUS	20/8 OZ
871558	BEEF STRIPLOIN BONELESS CENTER CUT ANGUS	16/10 OZ
871559	BEEF STRIPLOIN BONELESS CENTER CUT ANGUS	14/12 OZ
871561	BEEF STRIPLOIN BONELESS CENTER CUT ANGUS	10/16 OZ
8016	BEEF STRIPLOIN BONELESS CENTER CUT CHOICE DRY AGED	20/8 OZ
871628	BEEF STRIPLOIN BONELESS CENTER CUT PRIME	14/12 OZ
871652	BEEF STRIPLOIN BONELESS CENTER CUT PRIME	12/14 OZ
871552	BEEF STRIPLOIN BONELESS CENTER CUT PRIME	10/16 OZ
871527	BEEF STRIPLOIN BONELESS CENTER CUT PRIME	20/8 OZ
871643	BEEF STRIPLOIN BONELESS CENTER CUT PRIME DRY AGED	14/12OZ
820519	BEEF STRIPLOIN BONELESS CENTER CUT PRIME DRY AGED	12/14OZ
820515	BEEF STRIPLOIN BONELESS CENTER CUT PRIME DRY AGED	10/16OZ
871527	BEEF STRIPLOIN BONELESS DRY AGE ANGUS	10/16OZ
871540	BEEF STRIPLOIN CENTER CUT BONELESS	6/14 OZ

## Tenderloin

---

ITEM #	DESCRIPTION	PACK/SIZE
871579	TENDERLOIN CENTER CUT CHOICE	26/6 OZ
871599	TENDERLOIN STEAK BONE-IN ANGUS	10/16 OZ
218910	TENDERLOIN STEAK CENTER CUT	16/10OZ
218907	TENDERLOIN STEAK CENTER CUT	26/7OZ
318906	TENDERLOIN STEAK CENTER CUT	13/6OZ
871591	TENDERLOIN STEAK CENTER CUT ANGUS	20/8 OZ
118912	TENDERLOIN STEAK CENTER CUT ANGUS	14/12OZ
871593	TENDERLOIN STEAK CENTER CUT CHOICE	14/11OZ
190006	TENDERLOIN STEAK CENTER CUT PRIME	27/6OZ
190009	TENDERLOIN STEAK CENTER CUT PRIME	18/9OZ

Flat Iron Steak		
ITEM #	DESCRIPTION	PACK/SIZE
122212	BEEF FLAT IRON STEAK KOBE FROZEN	20/8OZ
222212	BEEF FLAT IRON STEAK KOBE FROZEN	16/10OZ
Hanger Steak		
ITEM #	DESCRIPTION	PACK/SIZE
007877	BEEF HANGER STEAK PRIME	16/10 OZ
091085	BEEF HANGER STEAK PRIME	20/8OZ
Lamb		
ITEM #	DESCRIPTION	PACK/SIZE
017131	LAMB RACK LOLLIPOPS NEW ZEALAND	1/192 PC
007126	LAMB RACK SPLIT & CHINE DOMESTIC	2/8 #AVG
007121	LAMB RACK WHOLE FRESH	2/8 #AVG
870801	LAMB SHOULDER CHOP FROZEN	20/4 OZ
008322	LAMB T-BONE LOIN CHOP NO TAIL	20/8 OZ
008343	LAMB T-BONE LOIN CHOP NO TAIL	26/5-6 OZ
Pork - Frenched		
ITEM #	DESCRIPTION	PACK/SIZE
001189	PREMIUM RESERVE PORK RACK CHOPS	14/12-14 OZ
007809	PREMIUM RESERVE PORK RACK CHOPS	16/10 OZ
008371	PREMIUM RESERVE PORK RACK CHOPS	5/16 OZ
Rib Eye Steak		
ITEM #	DESCRIPTION	PACK/SIZE
871632	RIB STEAK BONE-IN ANGUS	8/22OZ
871676	RIB STEAK BONE-IN ANGUS DRY AGED	10/16-18OZ
871630	RIB STEAK BONE-IN ANGUS DRY AGED	8/20 OZ
871674	RIB STEAK BONE-IN ANGUS DRY AGED	6/32 OZ
871606	RIBEYE STEAK BNELS ANGUS	14/12 OZ
871604	RIBEYE STEAK BNELS ANGUS	10/18 OZ
871625	RIBEYE STEAK BNELS ANGUS DRY AGED	10/16 OZ
871621	RIBEYE STEAK BNELS PRIME	14/12OZ
871623	RIBEYE STEAK BNELS PRIME	10/16OZ
961063	RIBEYE STEAK BNELS PRIME DRY AGED	10/18OZ
871660	RIB STEAK COWBOY ANGUS	10/16-18OZ
871673	RIB STEAK COWBOY ANGUS	9/18OZ
871659	RIB STEAK COWBOY ANGUS	8/20 OZ
871637	RIB STEAK COWBOY ANGUS	8/22 OZ
871658	RIB STEAK COWBOY ANGUS	7/24 OZ
871678	RIB STEAK COWBOY ANGUS	5/32OZ
871667	RIB STEAK COWBOY PRIME	8/22OZ
871672	RIB STEAK COWBOY PRIME	5/32OZ
871662	RIB STEAK COWBOY PRIME	5/40 OZ
871668	RIB STEAK COWBOY PRIME DRY AGED	8/18-20OZ
780119	RIB STEAK TOMAHAWK CHOICE	7/24 OZ
780186	RIB STEAK TOMAHAWK CHOICE	6/27-29OZ
780185	RIB STEAK TOMAHAWK CHOICE	6/42OZ

Short Rib		
ITEM #	DESCRIPTION	PACK/SIZE
007823	BEEF CHUCK FLAP TAIL BONELESS	6/2 PC
009946	BEEF CHUCK SHORT RIBS BONE/IN	1/60 LBA
008277	BEEF SHORT RIB B/1 1.5" PORTION	14/12 OZ
871047	BEEF SHORT RIBS B/1 2" PORTION	1/12 LB
008373	BEEF SHORT RIBS BONELESS CUT	10/16 OZ
007875	BEEF SHORT RIBS BONELESS CUT	20/8-10 OZ
007667	BEEF SHORT RIBS BONELESS CUT	30/5.5 OZ
008814	BEEF SHORT RIBS LOLLIPOP FRENCHED	10/16-18OZ
009970	BEEF SHORT RIBS LOLLIPOP FRENCHED	14/12 OZ
871054	BEEF SHT RIB B/1 1/2" KOREAN	2/5#

T-Bone & Porterhouse Steaks		
ITEM #	DESCRIPTION	PACK/SIZE
871704	BEEF T-BONE STEAK ANGUS	10/16 OZ
871706	BEEF T-BONE STEAK ANGUS	8/20 Z
871702	BEEF T-BONE STEAK ANGUS	8/22 OZ
871687	BEEF PORTERHOUSE STEAK ANGUS	10/16 OZ
871689	BEEF PORTERHOUSE STEAK ANGUS	8/20 OZ
871690	BEEF PORTERHOUSE STEAK ANGUS	8/22 OZ
871688	BEEF PORTERHOUSE STEAK ANGUS	5/32 OZ
117419	BEEF PORTERHOUSE STEAK ANGUS	6/36 OZ
871698	BEEF PORTERHOUSE STEAK ANGUS	4/42 OZ
871697	BEEF PORTERHOUSE STEAK ANGUS DRY AGED	7/24 OZ
009864	BEEF PORTERHOUSE STEAK ANGUS DRY AGED	5/38 OZ
871686	BEEF PORTERHOUSE STEAK ANGUS DRY AGED	4/44 OZ
871699	BEEF PORTERHOUSE STEAK PRIME	4/36OZ
871809	BEEF PORTERHOUSE STEAK PRIME DRY AGED	7/24OZ
117446	BEEF PORTERHOUSE STEAK PRIME DRY AGED	4/44OZ

Veal		
ITEM #	DESCRIPTION	PACK/SIZE
870334	VEAL CHOP FRENCHED LONG BONE	14/12 OZ
870332	VEAL CHOP FRENCHED LONG BONE	10/16 OZ
870363	VEAL CHOP FRENCHED LONG BONE	12/14 OZ
870321	VEAL CHOP KANSAS CITY STYLE	12/14 OZ
009875	VEAL LOIN EYE BNLS 0X0 S/ON	2/2-3 AVG
008134	VEAL OSSO BUCCO CUT HIND SHANK	14/10-12 OZ
008001	VEAL OSSO BUCCO CUT HIND SHANK 2"	10/16 OZ
009870	VEAL OSSO BUCCO CUT NET WT 3"	8/20 OZ
008409	VEAL PORTERHOUSE CHOP NO TAIL	14/12 OZ
008406	VEAL PORTERHOUSE CHOP NO TAIL	12/14 OZ
008062	VEAL PORTERHOUSE CHOP NO TAIL	10/16 OZ



SEAFOOD

## Artic Char

ITEM #	DESCRIPTION	PACK/SIZE
300369	ARCTIC CHAR FILLET 1-1.5LB	1/10 LBA

## Bronzini

ITEM #	DESCRIPTION	PACK/SIZE
025501	BRONZINO FILLET SKIN/ON	1/10 LBA
025486	BRONZINO LRG 600-800 GR	1/10 LBA
025478	BRONZINO WHOLE 400/600 GR	1/22 LBA
025466	BRONZINI FILLET 6OZ SKIN ON	1/10 LBA

## Chilean Sea Bass

ITEM #	DESCRIPTION	PACK/SIZE
961624	CHILEAN SEA BASS FILLET SKIN O	1/10 LBA
109367	CHILEAN SEA BASS WHOLE FRESH	1/25 LBA

## Caviar

ITEM #	DESCRIPTION	PACK/SIZE
109243	CAVIAR HACKLEBACK	1/2 OZ
070513	CAVIAR BLACK JAR	1/12 OZ
070512	CAVIAR BLACK LUMPFISH	1/12 OZ
070514	CAVIAR RED JAR	1/12 OZ

## Cod

ITEM #	DESCRIPTION	PACK/SIZE
025480	COD WHOLE FRESH HEAD ON	7/10 LBA
991001	COD PORTION 6 OZ *	1/10 LB
961499	COD FILLET SKINLESS REFRESHED	1/10 LBA
300234	COD PORTION 8 OZ SKINLESS	1/10 LBA

## Halibut

ITEM #	DESCRIPTION	PACK/SIZE
300426	HALIBUT 8OZ PORTIONS	1/10 LBA
025452	HALIBUT FILLET FRESH SKIN ON	1/10 LBA
025483	HALIBUT WHOLE FRESH	1/10 LBA

## Grouper

ITEM #	DESCRIPTION	PACK/SIZE
109550	GROUPEL FILLET 12-16 OZ	1/10 LBA
109257	GROUPEL WHOLE	1/10 LBA

## Mahi Mahi

ITEM #	DESCRIPTION	PACK/SIZE
025476	MAHI MAHI FILLET SKINLESS *	1/15 LBA
025507	MAHI MAHI PORTIONS 8 OZ	1/10 LB
963011	MAHI MAHI IQF	26/6 OZ

## Monkfish

ITEM #	DESCRIPTION	PACK/SIZE
025485	MONKFISH FILLET FRESH	1/10 LBA

## Red Snapper

ITEM #	DESCRIPTION	PACK/SIZE
025453	RED SNAPPER FILLET 8-10 OZ FRESH	1/10 LBA

## Salmon

ITEM #	DESCRIPTION	PACK/SIZE
300381	SALMON FILLET 14/16 SEND ALL	1/1 CT
025579	SALMON FILLET 18/20 SEND ALL	1/20 LBA
300371	SALMON FILLET 3/4 LB SKINLESS	1/10 LBA
961237	SALMON FILLET 4/5 LB SKIN ON	1/10 LBA
300271	SALMON FILLET 4/5 LB SKINLESS	1/10 LBA
961293	SALMON FILLET 8/10LB SEND ALL	1/2 CT
961188	SALMON PORTION 5OZ SKIN OFF	1/10 LBA
300280	SALMON PORTIONS 4OZ FRESH	1/10 LBA
300370	SALMON PORTIONS 6OZ FRESH	1/10 LBA
300265	SALMON PORTIONS 8OZ FRESH	1/10 LBA
300506	SALMON FILLET 4/5 FAROE ISLAND	1/10 LBA

## Sole Dover

ITEM #	DESCRIPTION	PACK/SIZE
025516	DOVER SOLE 16-20 HOLLAND*	1/ 25#

## Tuna

ITEM #	DESCRIPTION	PACK/SIZE
362412	TUNA AHI IVP 6 OZ	1/10 LB
190616	TUNA SAKU BLOCK 8-10OZ	1/10 LBA
961627	TUNA STEAK 4OZ SKNL BNLS	1/10 LB
300306	TUNA LOIN #2+ WILD FRESH	1/10 LBA
191277	TUNA LOIN #2G WILD FRESH PINK	1/14 LBA
362412	TUNA AHI IVP 6 OZ	1/10 LB
190616	TUNA SAKU BLOCK 8-10OZ	1/10 LBA







## Crab

ITEM #	BRAND	DESCRIPTION	PACK/SIZE
964008	EMERALD	CRAB KING LEGS RED 9-12CT	1/20 LB
191253	CHKN OF SEA	CRABMEAT CLAWMEAT BLUE CRAB	12/1 LB
191224	CHKN OF SEA	CRABMEAT LUMP BACKFIN BLUE	12/1 LB
191252	CHKN OF SEA	CRABMEAT LUMP BLUE CRAB	12/1 LB
191244	CHKN OF SEA	CRABMEAT LUMP COLOSSAL BLUE	12/1 LB
191249	CHKN OF SEA	CRABMEAT LUMP JUMBO BLUE CRAB	12/1 LB
191250	CHKN OF SEA	CRABMEAT LUMP SUPER BLUE CRAB	12/1 LB
191254	CHKN OF SEA	CRABMEAT SPECIAL CHKN OF SEA	12/1 LB
191248	VAN CAMP	CRABMEAT LUMP CHINESE RED	12/1 LB
191260	VAN CAMP	CRABMEAT LUMP PETITTE CHINESE	12/1 LB

## Lobster

ITEM #	BRAND	DESCRIPTION	PACK/SIZE
910013	ORION	LOBSTER MEAT CLAW & KNUCKLE	6/2 LB
910012	PACKER	LOBSTER MEAT CLAW/KNUCKLE/LEG	6/2 LB
961074	PACKER	LOBSTER TAIL 4 OZ BRAZILIAN	1/10 LB
961095	PACKER	LOBSTER TAIL 5OZ BRAZILIAN	1/10 LB
961059	PACKER	LOBSTER TAIL 6 OZ BRAZILIAN	1/10 LB
961053	PACKER	LOBSTER TAIL 8 OZ BRAZILIAN	1/10 LB

## Octopus

ITEM #	BRAND	DESCRIPTION	PACK/SIZE
192515	EMERALD	OCTOPUS WILD SPANISH 6/8 RAW	1/28 LBA
192512	EMERALD	OCTOPUS SPANISH COOKED LEGS	1/8 LBA
300334	PACKER	OCTOPUS 4/6 WILD SPANISH	1/30 LBA

## Scallops & Mussels

ITEM #	BRAND	DESCRIPTION	PACK/SIZE
961411	EMERALD	MUSSELS P.E.I. FRESH	1/10 LBA
960418	EMERALD	SCALLOPS 10/20CT DRY FRESH	1/8 LBA
300307	EMERALD	SCALLOPS 20/30CT DRY FRESH	1/8 LBA
961280	EMERALD	SCALLOPS U/10CT DRY FRESH	1/8 LBA
300392	EMERALD	SCALLOPS U/8 DRY FRESH	1/8 LBA

## Shellfish

ITEM #	BRAND	DESCRIPTION	PACK/SIZE
300330	EMERALD	COCKLES FRESH FARM RAISED	1/10 LBA
961054	EMERALD	LANGOSTINO MEAT FROZEN	4/5 LB
996281	EMERALD	PRAWNS HEAD ON U/7 CT	5/4 LB
996281	EMERALD	PRAWNS HEAD ON U/7 CT *	5/4 LB
965008	AQUA STAR	SHRIMP 16/20 P&D RAW T-ON	5/2 LB
965012	PACKER	SHRIMP 16/20 RAW SHELL ON	6/4 LB
965017	PACKER	SHRIMP 8/12 P&D WHITES	5/2 LB
965017	PACKER	SHRIMP 8/12 P&D WHITES	5/2 LB
965027	OCEAN HRZN	SHRIMP 8/12 PD TAIL ON	5/2 LB
109659	CENSEA	SHRIMP RAW 16/20 P&D T/ON WHT	5/2LB
109657	CENSEA	SHRIMP RAW 8/12 P&D T/ON BLK	5/2 LB
780263	AQUA STAR	SHRIMP SHELL ON U/15	6/4 LB
152513	PANAMA BAY	SHRIMP U/12 PANAMA WHITE	10/5 LB
961219	AQUA STAR	SHRIMP U/12 RAW SHELL ON	6/4 LB



DESSERTS

# cakes



**BIG FAT CHOCOLATE CAKE**  
SWEET STREET  
ITEM #160560 2/8.31 LB SLICED  
ITEM# 160558 2/8.31 LB UNSLICED



**CAKE CHOC BIG 5 LAYER 14 SLI**  
SWEET STREET  
ITEM #970413 2/7 LB



**CAKE CHOCOLATE LOVIN SPOON**  
SWEET STREET  
ITEM #160566 4/6.25 LB



**CAKE DEEP DARK CHOC CHOCOLATE**  
ANNIES  
ITEM #121238, 2/14 SLI



**CHOCOLATE FUDGE  
SKYSCRAPER CAKE**  
JUNIORS  
ITEM #121281, 1/14 SLI



**CAKE CHOC OVERLOAD**  
ANNIES  
ITEM #121213 2/14 SLI



**TIRAMISU DESSERT UNCUR TRAYS**  
BROOKLYN CANNOLI  
ITEM #112035, 2/4.25 LB



**CARROT CAKE BIG UNSL 6 LAYR 10"**  
SWEET STREET  
ITEM #160565, 2/8.37 LB



**RAINBOW PREMIER CAKE**  
ANNIES  
ITEM #995540, 2/14 SLI



**COCONUT CLOUD CAKE 10" SLICED**  
ANNIES  
ITEM #995539, 2/14 SLI



**RED VELVET CAKE ICED 14 SLI 9"**  
SWEET STREET  
ITEM #121200, 2/7.75 LB



**RED VELVET CAKE SKYSCRAPER**  
JUNIORS  
ITEM #121282, 1/14 SLI

# cheesecakes



ITEM #	BRAND	DESCRIPTION	PACK/SIZE
970416	SWEET STREET	CHEESECAKE CREME BRULEE	2/5 LB
970417	SWEET STREET	CHEESECAKE NY STYLE 10" 16SLI	4/16 SLI
921123	DAVIDS	CHEESECAKE NY STYLE 14 SLICE	2/10"
921125	DAVIDS	CHEESECAKE NY STYLE 20 SLICE	2/10"
121337	JUNIORS	CHEESECAKE ORIGINAL 3" 4oz	2/18 PC
121283	JUNIORS	CHEESECAKE PLAIN 10	2/20 SLI
121257	JUNIORS	CHEESECAKE PLAIN 10" 14 SLICE	2/14 SLI
121335	JUNIORS	CHEESECAKE PLAIN 3" RETAIL PK	9/4 OZ
921124	DAVIDS	CHEESECAKE SGF NY STYLE 14 SLICE	1/2 CT

# pies



**Pie Apple Unbaked 10"**  
DAVIDS COOKIES  
ITEM # 920774  
6/50 OZ



**Pie Blueberry Unbaked 10"**  
DAVIDS COOKIES  
ITEM # 920469  
6/47 OZ



**Pie Cherry Unbaked 10"**  
DAVIDS COOKIES  
ITEM # 928428  
6/47 OZ



**Pie Lemon Meringue 10" T&S**  
DAVIDS COOKIES  
ITEM # 112346  
6/36 OZ



**Pie Lemon Meringue 10"**  
DAVIDS COOKIES  
ITEM # 112350  
4/46 OZ



**Pie Peach Unbaked 10"**  
DAVIDS COOKIES  
ITEM # 928422  
6/47 OZ



**Pie Pumpkin Baked 10" T&S**  
DAVIDS COOKIES  
ITEM # 730418  
6/41 OZ



**Pie Pumpkin Unbaked 10"**  
DAVIDS COOKIES  
ITEM # 730417  
6/43 OZ



**Pie Southern Pecan Baked 10"**  
DAVIDS COOKIES  
ITEM # 920776  
6/35 OZ



**Pie Wildberry Unbaked 10"**  
DAVIDS COOKIES  
ITEM # 920775  
6/47 OZ



**Pie Peachberry Hi Unbaked 10"**  
SARA LEE  
ITEM # 928426  
1/6 CT



**Pie Apple Cranberry Unbaked 10"**  
SARA LEE  
ITEM # 928427  
6/51 OZ



**Pie Hi Lemon Meringue 10"**  
SARA LEE  
ITEM # 928427  
6/51 OZ



**Pie Caramel Apple Granny 10"**  
SWEET STREET  
ITEM # 970406  
4/4.75 SLI



**Pie Chocolate Peanut Butter**  
SWEET STREET  
ITEM # 970404  
4/12"



**PIE OREO COOKIE BASH**  
SWEET STREET  
ITEM # 970415  
4/12"



**PIE 10" CHOC CREAM W/CHOC**  
CHEF PIERRE  
ITEM # 928248  
6/27 OZ



**PIE 10" BOSTON CREME PREBAKED**  
CHEF PIERRE  
ITEM # 920603  
6/33 OZ



**PIE 10" CHOC CREME DE LA CREAM**  
CHEF PIERRE  
ITEM # 730414  
4/38 OZ



**PIE 10" BANANA CREAM**  
CHEF PIERRE  
ITEM # 920621  
6/27 OZ

# individual desserts



**Key West Key Lime**  
DAVIDS COOKIES  
ITEM #121219  
24/5 OZ



**Tiramisu**  
DAVIDS COOKIES  
ITEM #121209  
24/4 OZ



**Lil Red Velvet**  
DAVIDS COOKIES  
ITEM # 121269  
24/5.25 OZ



**Peanut Butter Explosion**  
DAVIDS COOKIES  
ITEM # 121198  
24/6.75 OZ



**Molten Chocolate Lava Cake**  
SWEET STREET DESSERTS  
ITEM # 920105  
35/5 OZ



**Chocolate Chip Cookie Lava**  
DAVIDS COOKIES  
ITEM # 121183  
24/6.5 OZ



**Chocolate Lava Cake**  
DAVIDS COOKIES  
ITEM #121209  
24/4 OZ



**Tuxedo Bombe**  
DAVIDS COOKIES  
ITEM # 121266  
24/4 OZ



**Apple Crumb Tart**  
NY CLASSIC FOODS  
ITEM # 256314  
9/4 OZ



**Large Napoleon**  
NY CLASSIC FOODS  
ITEM # 256317  
10/5.5 OZ



**Luscious Lemon Squares**  
SWEET STREET DESSERTS  
ITEM # 121327  
1/4 CT, 4/2.6 LB



**Assorted Cake Pops**  
NY CLASSIC FOODS  
ITEM # 112065  
1/25 CT



**Assorted Petit Fours**  
NY CLASSIC FOODS  
ITEM # 256318  
1/36 CT



**Assorted Mini Banquet Pastries**  
NY CLASSIC FOODS  
ITEM # 112066  
4/36 CT



**Banana Caramel  
Cheesecake Xango**  
SWEET STREET DESSERTS  
ITEM # 121256  
48/4.8 OZ



**Caramel Filled Churros**  
(Pre-Fried)  
WHITE TOQUE  
ITEM # 942557  
4/3 LB



**Vanilla Creme Brulee  
Cheesecake**  
SWEET STREET DESSERTS  
ITEM # 970435  
1/32 CT



**Mini Cheesecake**  
JUNIOR'S  
#121323 1/24 ct 2 oz  
#121337 2/18 ct 4 oz  
#121335 9/4 oz Retail



**Large Cannoli Shells**  
BROOKLYN CANNOLI  
ITEM # 112027  
48/0.5 OZ



**Cannoli Cream with Chocolate  
Chips**  
NY CLASSIC FOODS  
ITEM # 112029  
4/1.5 LB

## fillables



**Dark Chocolate Cup  
Slanted Rim,  
Pisa Cup**  
1/168 ct, #863596,



**Dark Chocolate  
Truffle Shell .98 in**  
1/504 ct, #863595



**Milk Chocolate  
Truffle Shell .98 in**  
1/504 ct, #863618



**White Chocolate  
Truffle Shell .98 in**  
1/504 ct, #863619

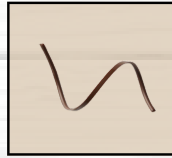
## decorations



**Flower  
Dark Chocolate**  
1/76 ct, #863593



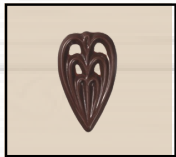
**Happy Birthday  
Dark Chocolate**  
4/140 ct, #863602



**Curled Spiral  
Dark Chocolate**  
6/80 ct, #863622



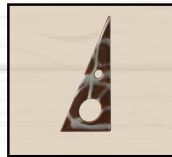
**Crunchy Beads  
Mixed Chocolate**  
4/4.4 lbs,  
#863617



**Fan Shape  
Dark Chocolate**  
6/300 ct, #863590



**Fan Decor  
Dark Chocolate**  
6/280 ct, #863625



**Chocolate  
Marble Triangle**  
6/131 ct,  
#863624



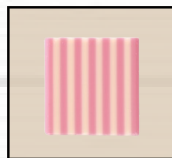
**Bowtie  
Dark & White  
Chocolate**  
1/250 ct, #863592



**Tornado  
Dark & White  
Chocolate**  
6/144 ct, #863591



**Triangle & Squares  
White Chocolate**  
6/262 ct, #863594

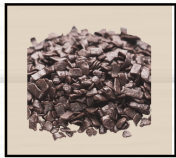


**Pink/White  
Stripped Square**  
6/500 ct,  
#863623



**Panatella Chocolate  
Sticks**  
6/110 ct  
Dark: #863603  
White: #863620  
Dark & White: #863621

## toppings



**Chocolate  
Dark Flakes**  
20/2.2 lb, #863615



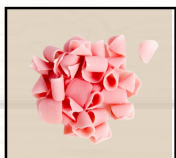
**Chocolate  
White Flakes**  
20/2.2 lb, #863614



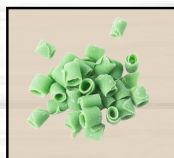
**Ribbon Shavings  
Dark Chocolate**  
1/5.5 lb, #863589



**Dark Blossom  
Curls**  
4/4.4 lb #863617



**Pink Blossom  
Curls**  
1/5lb, #863601



**Green Blossom  
Curls**  
1/12 lb, #120817

## assorted toppings



ITEM #	BRAND	DESCRIPTION	PACK/SIZE
470457	LUXARDO	CHERRIES MARASCHINO	4/3 KG
411256	10 DEGREES	CHOCOLATE DARK BELGIAN 54% SEMI SWEET	1/22 LB
411257	10 DEGREES	CHOCOLATE MILK BELGIAN DISCS 33%	1/22 LB
134507	REESE'S	CHOCOLATE REESE'S PEANUT BUTTER MORSELS	12/10 OZ
11771	HERSHEY	CHOCOLATE SEMI SWEET CHOCOLATE CHIPS	1/25 LB
411255	10 DEGREES	CHOCOLATE WHITE BELGIAN COUVERTURE 31%	1/22 LB
340602	RCN	FLAKES COCONUT SWEETENED	1/25 LB
15619	BONOMI	ITALIAN LADY FINGERS	10/17.6 OZ
999140	SMUCKERS	TOPPING SCRAPER PLATE CARAMEL	12/19.5 OZ
999136	SMUCKERS	TOPPING SCRAPER PLATE CHOCOLATE	12/19.5 OZ
999137	SMUCKERS	TOPPING SCRAPER PLATE RASPBERRY	12/19.5 OZ
999131	SMUCKERS	TOPPING SCRAPER PLATE VANILLA	12/19.5 OZ
23820	RICH'S	WHIPPED "ON TOP" TOPPING	12/16 OZ
310315	REDDI WHIP	WHIPPED CREAM AEROSOL	12/15 OZ

## Gelato

ITEM #	BRAND	DESCRIPTION	PACK/SIZE
256342	NY CLASSIC	BUTTER PECAN	1/2.5 GAL
256302	NY CLASSIC	CARAMEL SALTED	1/2.5 GAL
256339	NY CLASSIC	DARK CHOCOLATE	1/2.5 GAL
256305	NY CLASSIC	ESPRESSO	1/2.5 GAL
256338	NY CLASSIC	OLIVE OIL GELATO	1/2.5 GAL
256337	NY CLASSIC	POPCORN GELATO	1/2.5 GAL
256306	NY CLASSIC	PUMPKIN	1/2.5 GAL
256325	NY CLASSIC	RASPBERRY	1/2.5 GAL
256300	NY CLASSIC	VANILLA BEAN	1/2.5 GAL
256341	NY CLASSIC	WHITE CHOCOLATE	1/2.5 GAL

## Ice Cream

ITEM #	BRAND	DESCRIPTION	PACK/SIZE
257040	BLUE BUNNY	CHOCOLATE	1/3 GAL
257010	BLUE BUNNY	COOKIES AND CREAM	1/3 GAL
257038	BLUE BUNNY	VANILLA	1/3 GAL
842408	HAGEN DAZ	CHOCOLATE	2/2.5 GAL
842397	HAGEN DAZ	VANILLA	1/2.5 GAL
842430	SAN BERNARDO	CHOCOLATE 14%	1/3 GAL
842602	SAN BERNARDO	SEA SALT CARAMEL TR	1/3 GAL
842456	SAN BERNARDO	STRAWBERRY 14%	1/3 GAL
842429	SAN BERNARDO	VANILLA 14%	1/3 GAL

## Sorbet

ITEM #	BRAND	DESCRIPTION	PACK/SIZE
256340	NY CLASSIC	COCONUT SORBET	1/2.5 GAL
256324	NY CLASSIC	GRAPEFRUIT SORBET	1/2.5 GAL
256310	NY CLASSIC	LEMON SORBET	1/2.5 GAL
842322	SAN BERNARDO	LEMON SORBET	1/1.5 GAL
256308	NY CLASSIC	MANGO SORBET	1/2.5 GAL
256345	NY CLASSIC	MIXED BERRY SORBET	1/2.5 GAL
256322	NY CLASSIC	ORANGE SORBET	1/2.5 GAL
256344	NY CLASSIC	PEACH SORBET	1/2.5 GAL
256320	NY CLASSIC	RASPBERRY SORBET	1/2.5 GAL
842321	NY CLASSIC	SORBET MANGO	1/1.5 GAL



BEVERAGES



## Coffee

ITEM #	BRAND	DESCRIPTION	PACK/SIZE
103120	LAVAZZA	COLD BREW BAG IN BOX	1/1 GAL
103111	LAVAZZA	COFFEE TOP CLASS BLUE 1X	1/100 CT
103112	LAVAZZA	COFFEE TOP CLASS BLUE 2X	1/100 CT
103110	LAVAZZA	COFFEE GROUND DECAF DEK	30/2.25 OZ
510223	STONE PEAK	COFFEE DECAF	42/2 OZ
510180	GRAMERCY PARK	COFFEE GROUND DECAF	42/2 OZ
510074	GRAMERCY PARK	COFFEE HOUSE BLEND	42/2 OZ
510229	STONE PEAK	COFFEE FRENCH ROAST	64/3 OZ
510226	STONE PEAK	COFFEE FRENCH VANILLA	64/3 OZ
510225	STONE PEAK	COFFEE HAZELNUT	64/3 OZ
510230	STONE PEAK	COFFEE PUMPKIN SPICE	64/3 OZ
510078	GRAMERCY PARK	COFFEE DECAF ARABICA	80/2.5 OZ
510220	STONE PEAK	COFFEE BLEND SUMMIT	84/2.5 OZ
510221	STONE PEAK	COFFEE BLEND VALLEY	84/2.5 OZ
510224	STONE PEAK	COFFEE COLOMBIAN 100%	84/2.5 OZ

## Tea

ITEM #	BRAND	DESCRIPTION	PACK/SIZE
510691	BIGELOW	TEA APPLE CINNAMON HERBAL DECAF	6/28 CT
510695	BIGELOW	TEA ASSORTED FLAVORED & HERBAL	6/28 CT
510671	BIGELOW	TEA CHAMOMILE HERBAL CAFFEINE FREE	6/28 CT
510685	BIGELOW	TEA EARL GREY	6/28 CT
510689	BIGELOW	TEA ENGLISH TEATIME	6/28 CT
510670	BIGELOW	TEA GREEN	6/28 CT
510678	BIGELOW	TEA LEMON LIFT	6/28 CT

## Water

ITEM #	BRAND	DESCRIPTION	PACK/SIZE
581214	PERRIER	SPARKLING WATER	24/11 OZ
583412	SARATOGA SPRING WATER	WATER SPARKLING (DEPOSIT)	24/12 OZ
583419	SARATOGA SPRING WATER	WATER SPARKLING (DEPOSIT)	12/28 OZ
582412	SARATOGA SPRING WATER	WATER SPARKLING (NON DEPOSIT)	24/12 OZ
582419	SARATOGA SPRING WATER	WATER SPARKLING (NON DEPOSIT)	12/28 OZ
581209	PERRIER	WATER SPARKLING GLASS BOTTLE	12/25 OZ
582403	SAN PELLEGRINO	WATER SPARKLING GLASS BOTTLE	24/8.45 OZ
582424	SAN PELLEGRINO	WATER SPARKLING GLASS BOTTLE	24/5 LT
583416	SARATOGA SPRING WATER	WATER STILL (DEPOSIT)	12/28 OZ
582416	SARATOGA SPRING WATER	WATER STILL (NON DEPOSIT)	12/28 OZ



# purees

## FROZEN FRUIT PURÉE 100%



Our fruit purees are available in 100% fruit or with added sugar. They are GMO-free and have no preservatives, additives and thickening agents. Ready to use and with a long preservation period after unfreezing (between 10 and 15 days).

ITEM#	DESCRIPTION	PACK SIZE
845156	PUREE APRICOT	6/2.2 LB
845159	PUREE BANANA*	6/2.2 LB
845016	PUREE BLACK CURRANT	6/2.2 LB
845106	PUREE BLACKBERRY	6/2.2 LB
845113	PUREE BLOOD ORANGE*	6/2.2 LB
845157	PUREE BLUEBERRY	6/2.2 LB
845167	PUREE COCONUT	6/2.2 LB
845178	PUREE FIG*	6/2.2 LB
845176	PUREE GREEN APPLE	6/2.2 LB
845153	PUREE LEMON*	6/2.2 LB
845102	PUREE LIME	6/2.2 LB
845169	PUREE LYCHEE	6/2.2 LB
845130	PUREE MANDARIN*	6/2.2 LB
845014	PUREE MANGO*	6/2.2 LB
845177	PUREE MELON	6/2.2 LB
845172	PUREE MORELLO CHERRY	6/2.2 LB
845103	PUREE PASSION FRUIT*	6/2.2 LB
845107	PUREE PEAR	6/2.2 LB
845151	PUREE PINEAPPLE*	6/2.2 LB
845174	PUREE PINK GRAPEFRUIT	6/2.2 LB
845154	PUREE POMEGRANATE*	6/2.2 LB
845173	PUREE RED BERRIES	3/2.2 LB
845175	PUREE RHUBARB*	6/2.2 LB
845101	PUREE STRAWBERRY*	6/2.2LB
845158	PUREE WATERMELON*	3/2.2 LB

\*no sugar added

## SHELF STABLE AMBIENT FRUIT PURÉES WITH NO ADDED SUGAR



With no added sugar, the purees have no preservatives, no added flavorings, and no artificial colors, and are highly stable with a shelf life of 15\* months before opening, and eight days in the fridge once opened.

ITEM#	DESCRIPTION	PACK SIZE
845108	PUREE BLACKBERRY AMBIENT	6/1LT
845109	PUREE STRAWBERRY AMBIENT	6/1LT
845110	PUREE RASPBERRY AMBIENT	6/1LT
845111	PUREE MANGO AMBIENT	6/1LT
845114	PUREE PASSION FRUIT AMBIENT	6/1LT
845115	PUREE PEACH AMBIENT	6/1LT

### Sherry Smash (Rocks)



1/4 part Blood Orange puree | 1/2 part Blackberry | 1/2 part Raspberry | 1/2 part agave syrup | 1/4 part fresh lemon | 1 part gin | 1 part sherry

### Blackberry Collins (Highball)



1/2 part blackberry puree | 3/4 part simple syrup | 3/4 part fresh lemon | Club Soda (add last) | 1+1/2 part gin

### Peach Julep (Julep Cup or Highball)



1/2 part White Peach puree | 1/2 cup loose mint springs | 3/4 part honey syrup | 2 parts bourbon

### Pisco Lychee Sour (Large Rocks Glass)



3/4 part Lychee puree | 3 drops of angosture bitters over finished drink | 3/4 part simple syrup | 3/4 part fresh lemon | 1 egg white | 2 parts pisco acholado



6 Westbelt  
Wayne, NJ 07470  
[www.driscollfoods.com](http://www.driscollfoods.com)