



May 22, 2026

Project Name: Reed Green Coliseum Renovation

IHL Project Number: 208-301

WBA Project Number: 23-063

ADDENDUM NO. 01

NOTICE TO ALL DOCUMENT HOLDERS:

The following additions, deletions, changes and clarifications to the drawings and specifications are to be included as part of the Contract Documents.

GENERAL INFORMATION

ITEM NO. 01 Pre-Bid Meeting will be held at the USM Physical Plant at **10:00 AM on Thursday, June 4, 2026.** (3101 W 4th St, Hattiesburg MS 39401)

SPECIFICATIONS

ITEM NO. 01 01.2100 Allowances , Part 1 Paragraph 5 Allowances Schedule. **Revise Paragraph 5D** for the Access Hardware Package One to include the stipulated sum/price of **\$91,847.85**. **Revise Paragraph 5E** for the Access Hardware Package Two to include the stipulated sum/price of **\$42,971.25**.

ITEM NO. 02 **Add** Specification Section 07.1800 Traffic Coatings.

DRAWINGS

ITEM NO. 01 On Sheets **A300, A301, & A311**, replace all notes referring to “Crystalline Waterproofing on Interior side of Permanent shoring wall” with “Crystalline waterproofing admixture as per structural drawings.”

ITEM NO. 02 **Replace** Sheet **A106** with attached **revised** sheet **A106**
Clarification: Exterior concourse slab to slope away from concourse doors & add a water proof traffic coating to exterior surface of slab.

ITEM NO. 03 **Replace** Sheet **A404** with attached **revised** sheet **A404** to add detail 14/A404
Clarification: Slab edge detail for new exterior concourse slab over conditioned space.

Encl: Drawings (30x42): A106, A404
Specification (8-½ x 11): 07.1800 Traffic Coatings
Cc: All document holders
File 23-063. C2

Traffic Coatings

PART 1 GENERAL

1. SECTION INCLUDES
 - A. Waterproof coatings for traffic surfaces.
2. REFERENCE STANDARDS
3. SUBMITTALS
 - A. See Section 01 3000 - Administrative Requirements for submittal procedures.
 - B. Product Data: Include product characteristics and limitations. Identify dissolving solvents, fuels, and potential destructive compounds.
4. QUALITY ASSURANCE
 - A. Manufacturer Qualifications: Company specializing in manufacturing products of the type specified in this section, with not less than three years of documented experience.
 - B. Applicator Qualifications: Company specializing in performing installation of traffic membrane, with minimum three years experience.
5. DELIVERY, STORAGE, AND HANDLING
 - A. See Section 01 7419 - Construction Waste Management and Disposal for packaging waste requirements.
 - B. Maintain storage area at minimum ambient temperature of 55 degrees F (13 degrees C).
6. FIELD CONDITIONS
 - A. Do not install materials when temperature is below 50 degrees F (10 degrees C) or above 90 degrees F (32 degrees C).

PART 2 PRODUCTS

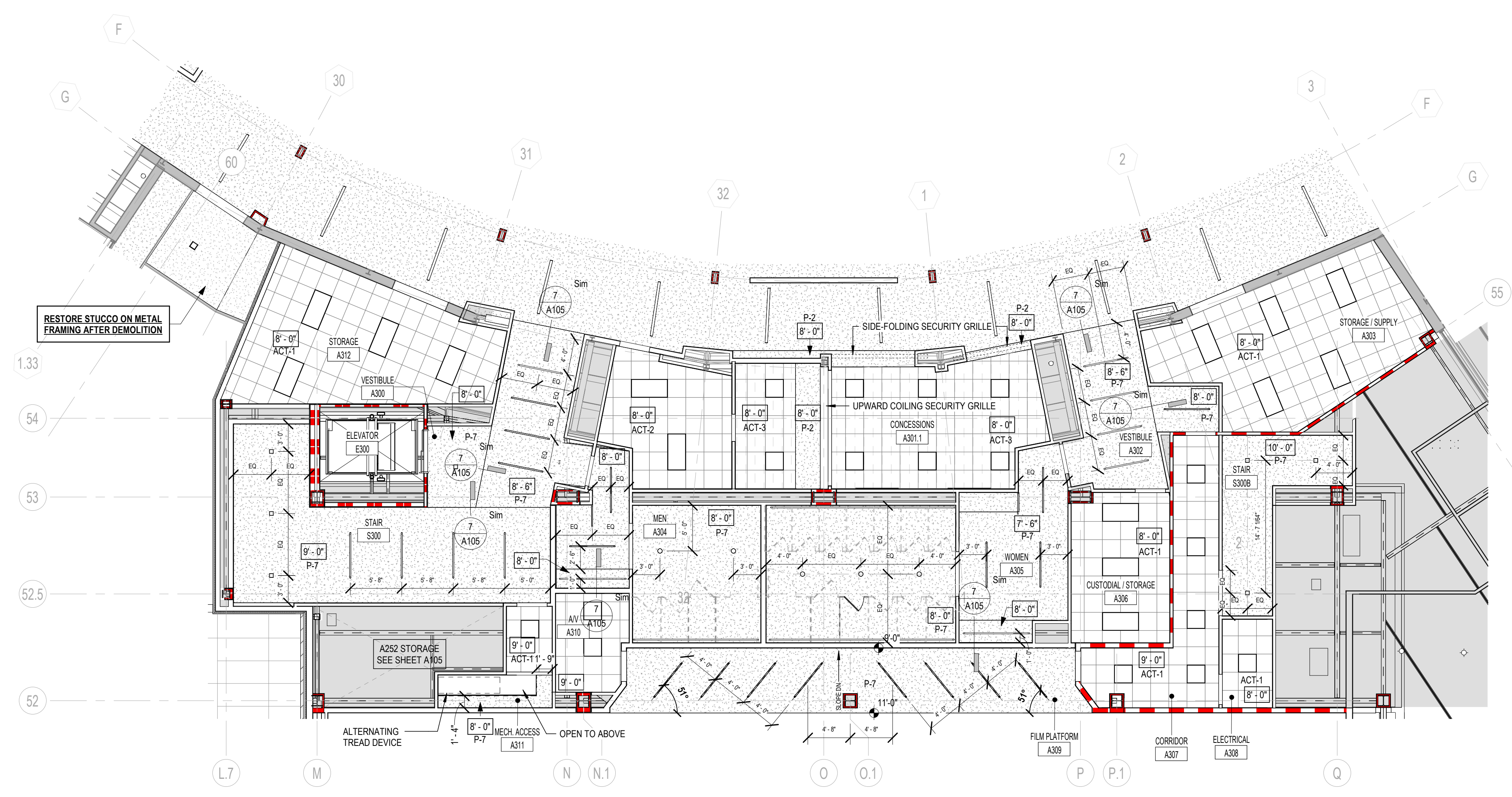
1. MANUFACTURERS
2. TRAFFIC COATINGS
 - A. Polyurethane Waterproof Pedestrian Traffic Coating System: Fluid-applied polyurethane system with base and top coat.
 1. Finished Coating Thickness: 48 mil, 0.048 inch (1.21 mm), minimum.
 2. Color: As selected by Architect.
 3. Products:
 - a. Master Builders Solutions; MasterSeal Traffic 1500: www.master-builders-solutions.com/en-us/#sle.
 - b. Tremco Commercial Sealants & Waterproofing; Vulkem 350NF/351: www.tremcosealants.com/#sle.
 - c. Substitutions: See Section 01 6000 - Product Requirements.
3. ACCESSORIES
 - A. Surfacing: Clean sand.
 - B. Filler and Primer: As recommended by membrane manufacturer.
 - C. Sealant: As recommended by membrane manufacturer, and compatible with system and adjacent materials.

PART 3 EXECUTION

1. EXAMINATION
 - A. Verify that substrate is ready to receive work, surface is clean, dry and free of substances that could adversely effect bond.
2. PREPARATION
 - A. Clean substrate surface free of foreign matter.

- B. Protect adjacent surfaces.
- 3. INSTALLATION
 - A. Apply system materials in accordance with manufacturer's instructions.
 - B. Apply surfacing to top coat before set.
 - C. Apply sealant to junction of horizontal and intersecting surfaces to achieve watertight seal.

END OF SECTION



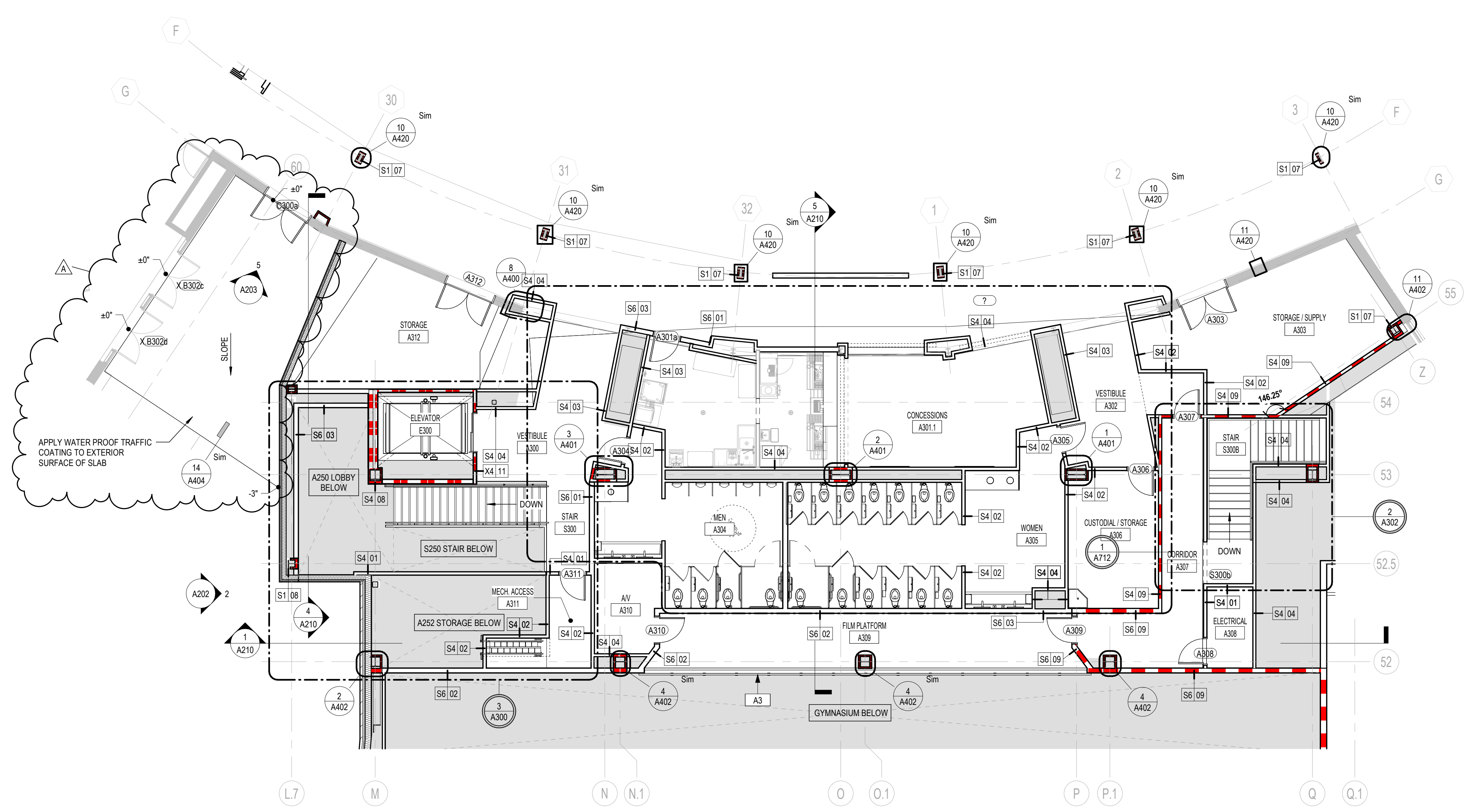
RCP LEGEND

| | | | |
|--|--|--|--|
| | | | |
| | | | |
| | | | |
| | | | |
| | | | |

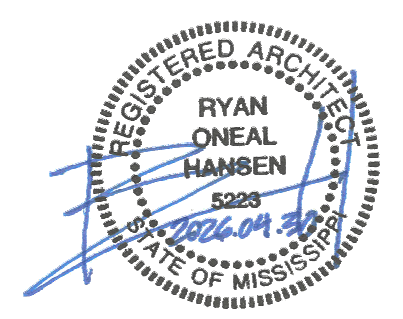
RAILING SCHEDULE

| TYPE | DESCRIPTION |
|------|---------------------------------|
| A1 | CABLE RAILING |
| A2 | CABLE RAILING |
| A3 | CABLE RAILING |
| C | TYP. HANDRAIL WALL MOUNT DETAIL |
| D | LOWER BOWL HANDRAIL |
| DR | FREESTANDING DRINK RAIL |
| F | DIVIDER RAIL |
| G1 | ORNAMENTAL PICKET GUARDRAIL |
| G2 | ORNAMENTAL PICKET GUARDRAIL |

4 CEILING PLAN - LEVEL 300 - AREA A
1/8" = 1'-0"



- GENERAL NOTES**
- NOTES APPEAR ON VARIOUS DRAWINGS FOR VARIOUS DISCIPLINES FOR VARIOUS DISCIPLINES. REVIEW ALL SHEETS AND APPLY NOTES TO RELATED BUILDING COMPONENTS.
 - REFER TO COMPLETE SET OF ISSUED CONTRACT DOCUMENTS FOR OTHER APPLICABLE NOTES, ABBREVIATIONS, AND SYMBOLS.
 - WHERE MATERIALS ARE APPLIED TO, OR ARE IN DIRECT CONTACT WITH WORK INSTALLED BY ANOTHER SUBCONTRACTOR, COMMENCEMENT OF WORK IMPLIES ACCEPTANCE OF THE SUBSTRATE AS SUITABLE FOR THE APPLICATION INTENDED.
 - ISOLATE DISSIMILAR METALS TO PREVENT GALVANIC CORROSION.
 - PARTITION TYPES AND FIRE RESISTIVE RATINGS INDICATED ON A WALL ARE TO BE CONTINUOUS FOR THE LENGTH AND HEIGHT OF A PARTITION.
 - OPENINGS IN RATED WALL, FLOOR, CEILING AND ROOF ASSEMBLIES SHALL BE SEALED WITH PENETRATION SEALANT SYSTEMS MEETING OR EXCEEDING THE REQUIRED FIRE RESISTIVE RATINGS.
 - MAINTAIN THE FIRE RATING OF CONSTRUCTION AROUND CABINETS, PANELS, AND BOXES RECESSED IN FIRE RATED WALL, FLOOR, AND CEILING ASSEMBLIES.
 - PROVIDE CONTINUOUS PERIMETER FIRE SAFING BETWEEN FLOORS AND COORDINATE THE INSTALLATION WITH THE EXTERIOR WALL. FIRE RATING OF SAFING SHALL MATCH FIRE RATING OF FLOOR CONSTRUCTION.
 - DO NOT SCALE THE DRAWINGS.
 - FIELD MEASURE AND CONFIRM DIMENSIONS FOR OWNER PROVIDED EQUIPMENT AND FURNISHINGS.
 - PROVIDE STIFFENERS, BRACING, BACKING PLATES AND BLOCKING REQUIRED FOR SECURE INSTALLATION OF TOILET PARTITIONS, DOORS AND DOOR HARDWARE INCLUDING WALL-MOUNTED DOOR STOPS, HANDRAILS, WALL-MOUNTED SHELVES, OPERABLE PARTITIONS, MISCELLANEOUS EQUIPMENT, AND SUSPENDED MECHANICAL AND ELECTRICAL EQUIPMENT.
 - COORDINATE ALL BASE AND HOUSEKEEPING PADS WITH MECHANICAL, PLUMBING AND ELECTRICAL EQUIPMENT.
 - LOCATE ACCESS PANELS AS INDICATED ON DRAWINGS. FOR ACCESS PANELS NOT SHOWN BUT REQUIRED BY PROVISIONS OF THE CONTRACT DOCUMENTS, LOCATED IN ACCORDANCE WITH APPLICABLE CODES. SUBMIT PROPOSED LOCATIONS TO THE ARCHITECT FOR REVIEW AND ACCEPTANCE PRIOR TO INSTALLATION.
 - CONTRACTOR TO PATCH AND REPAIR ALL EXISTING FLOOR AND WALL TRANSITIONS THAT ARE LEFT EXPOSED AT CONNECTIONS BETWEEN EXISTING CONCOURSE AND NEW ADDITIONS.



2026.04.30

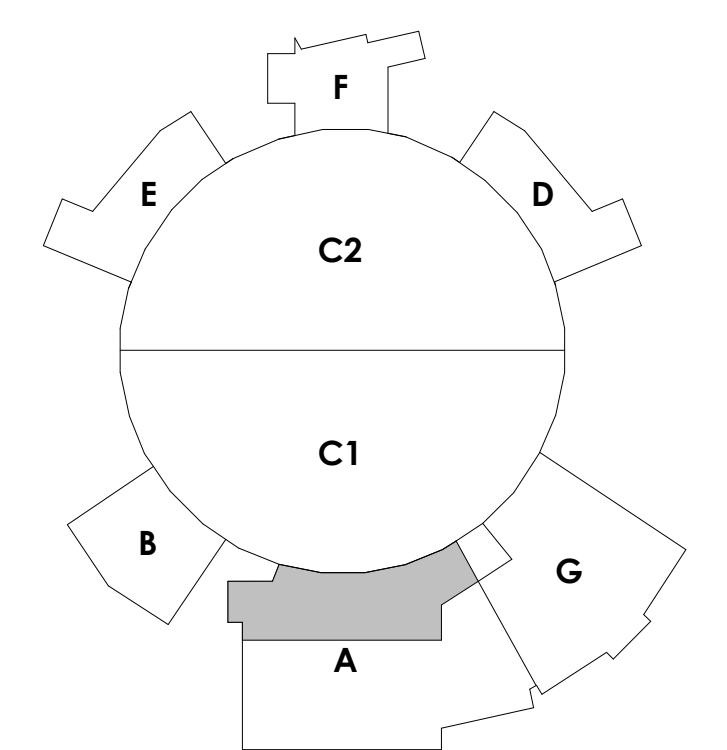
CONSTRUCTION DOCUMENTS

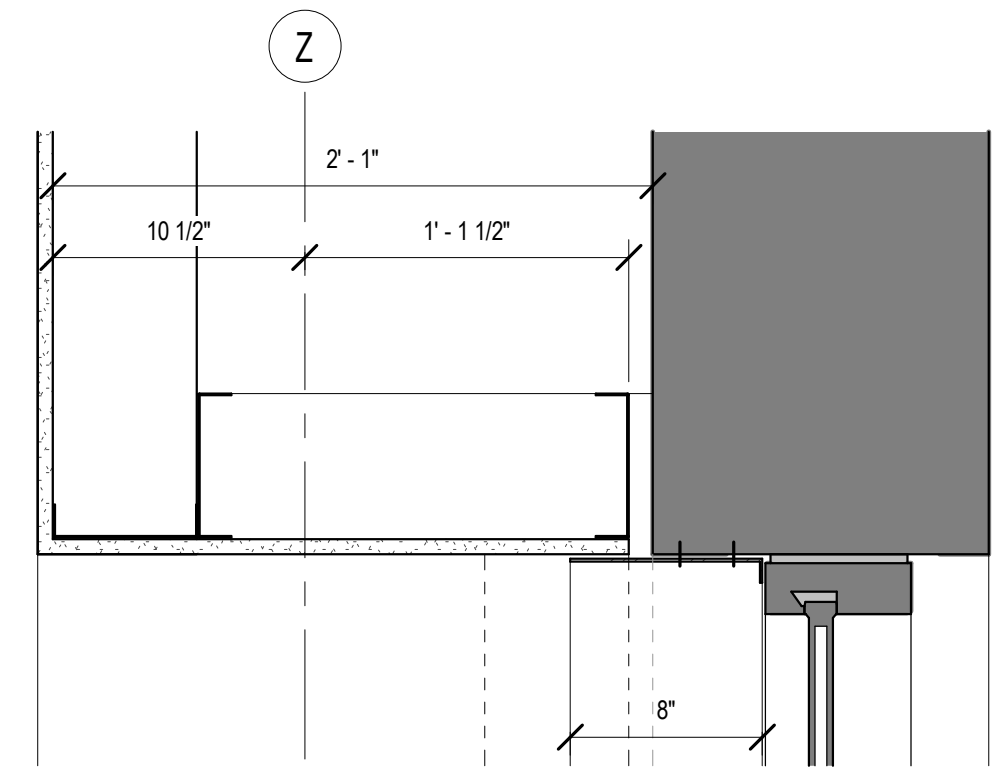
WBA # 23-063

REVISIONS

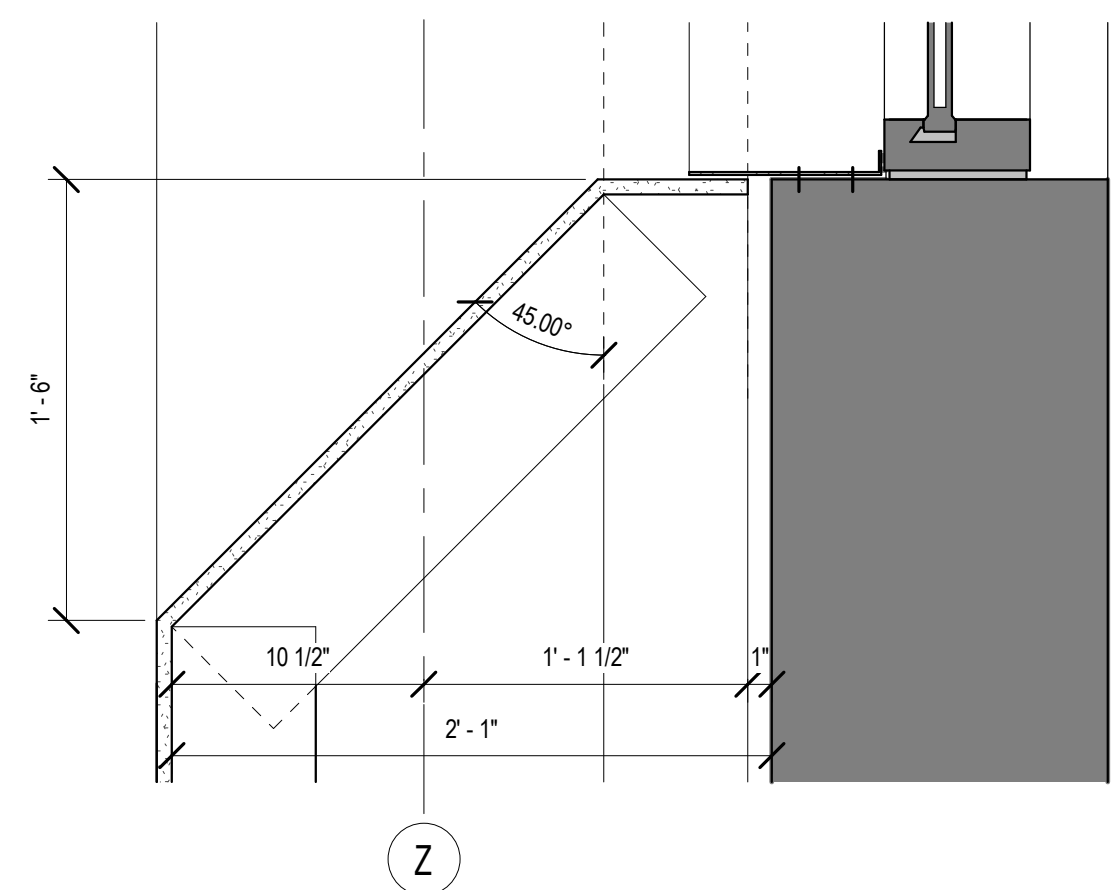
| NO. | DESCRIPTION | DATE |
|-----|-------------|----------|
| A | ADDENDUM 01 | 05.22.26 |

1 FLOOR PLAN - LEVEL 300 - AREA A
1/8" = 1'-0"

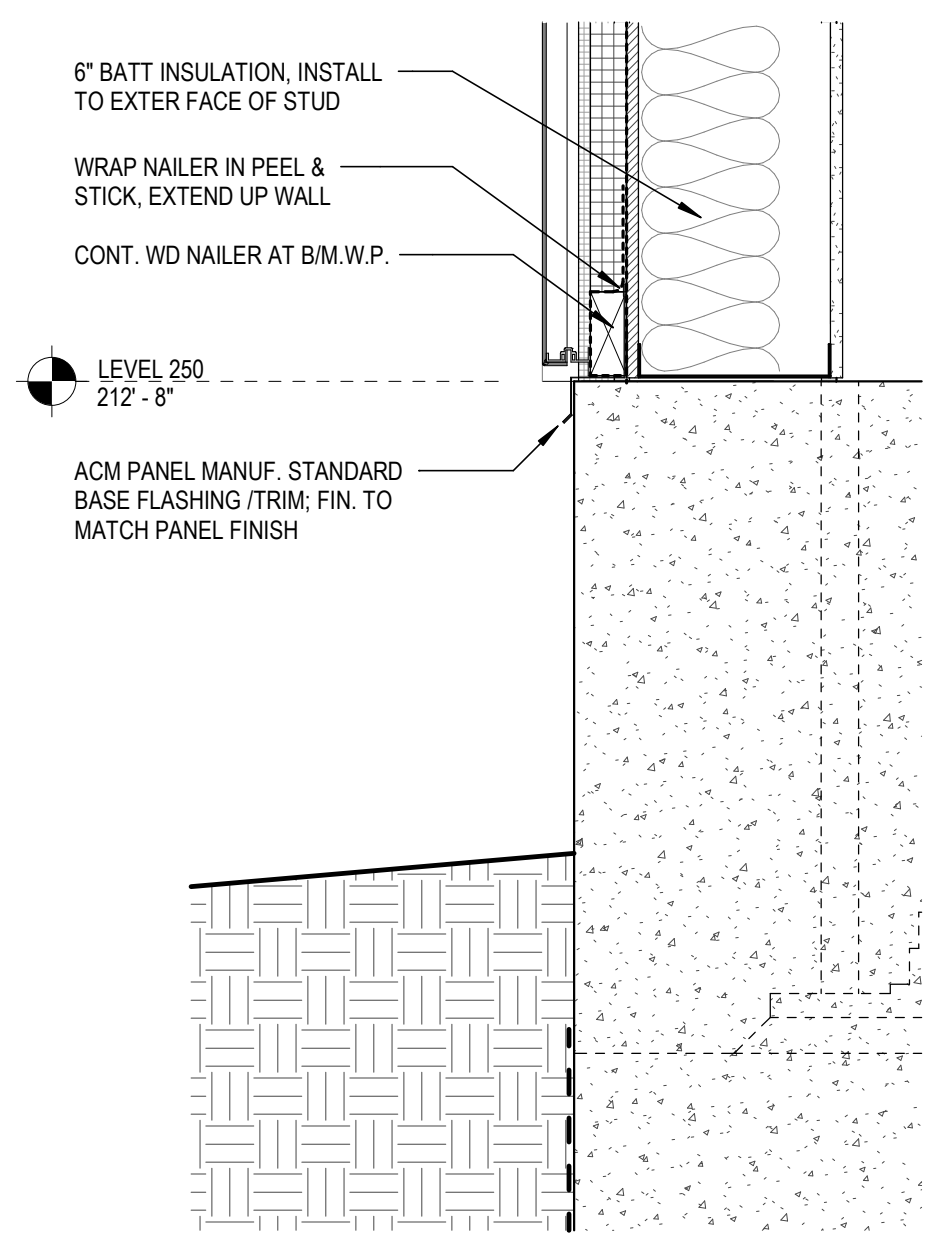




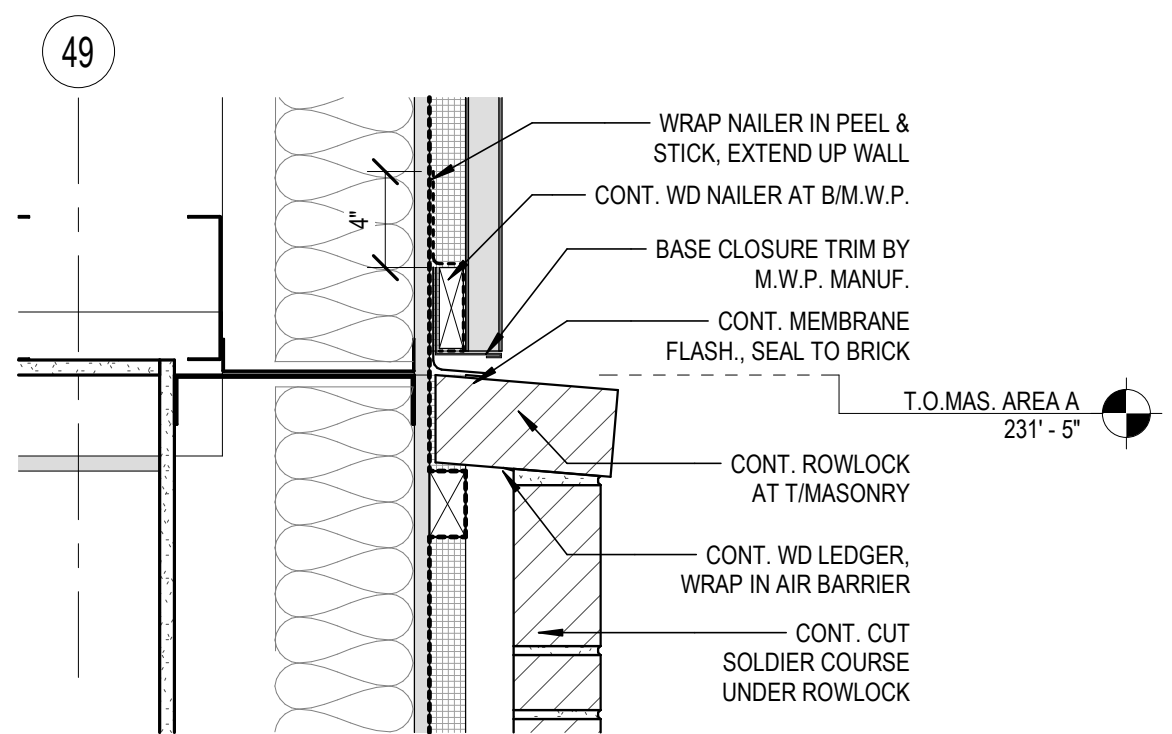
12 SECTION DETAIL
1 1/2" = 1'-0"



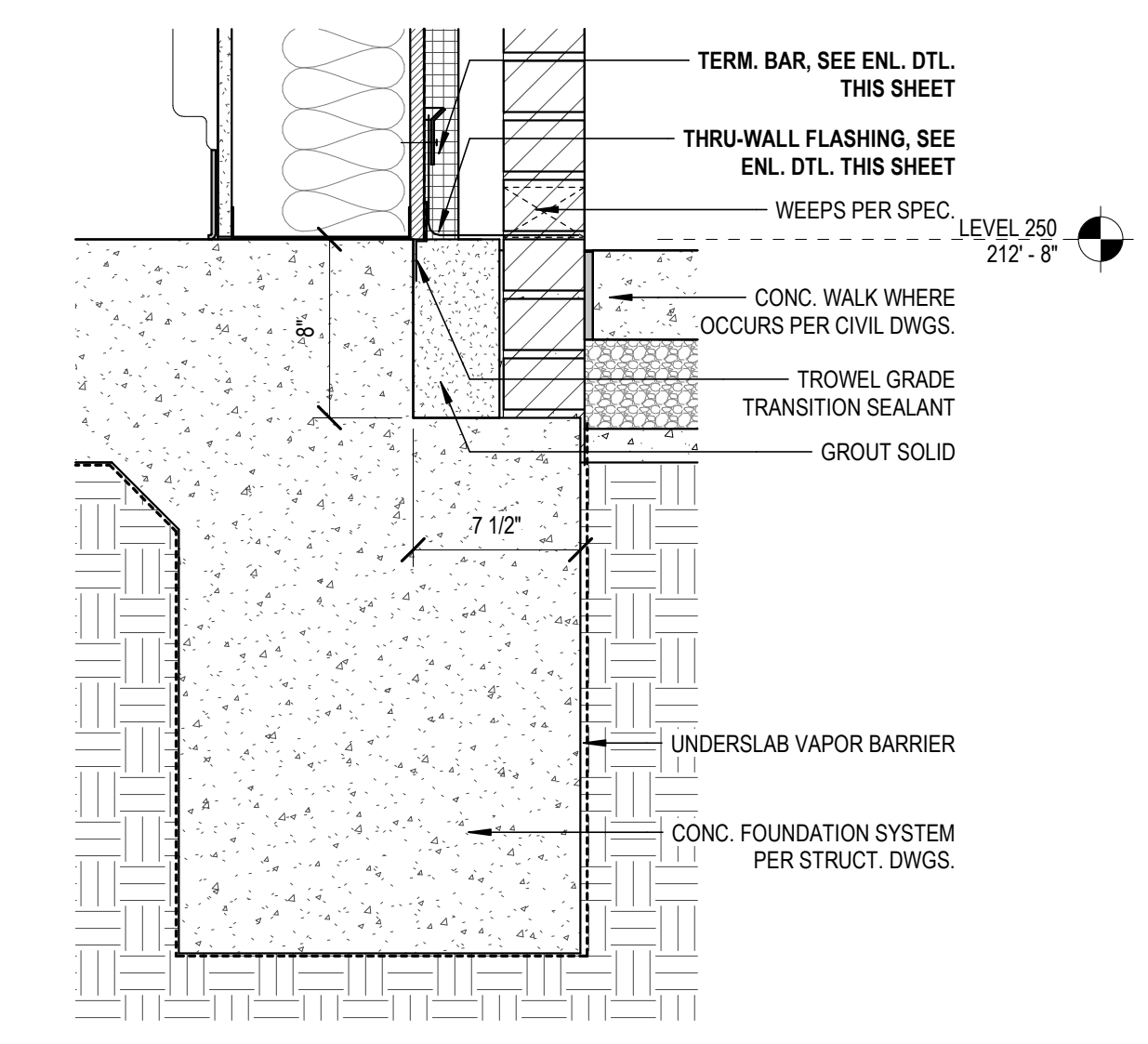
13 SECTION DETAIL
1 1/2" = 1'-0"



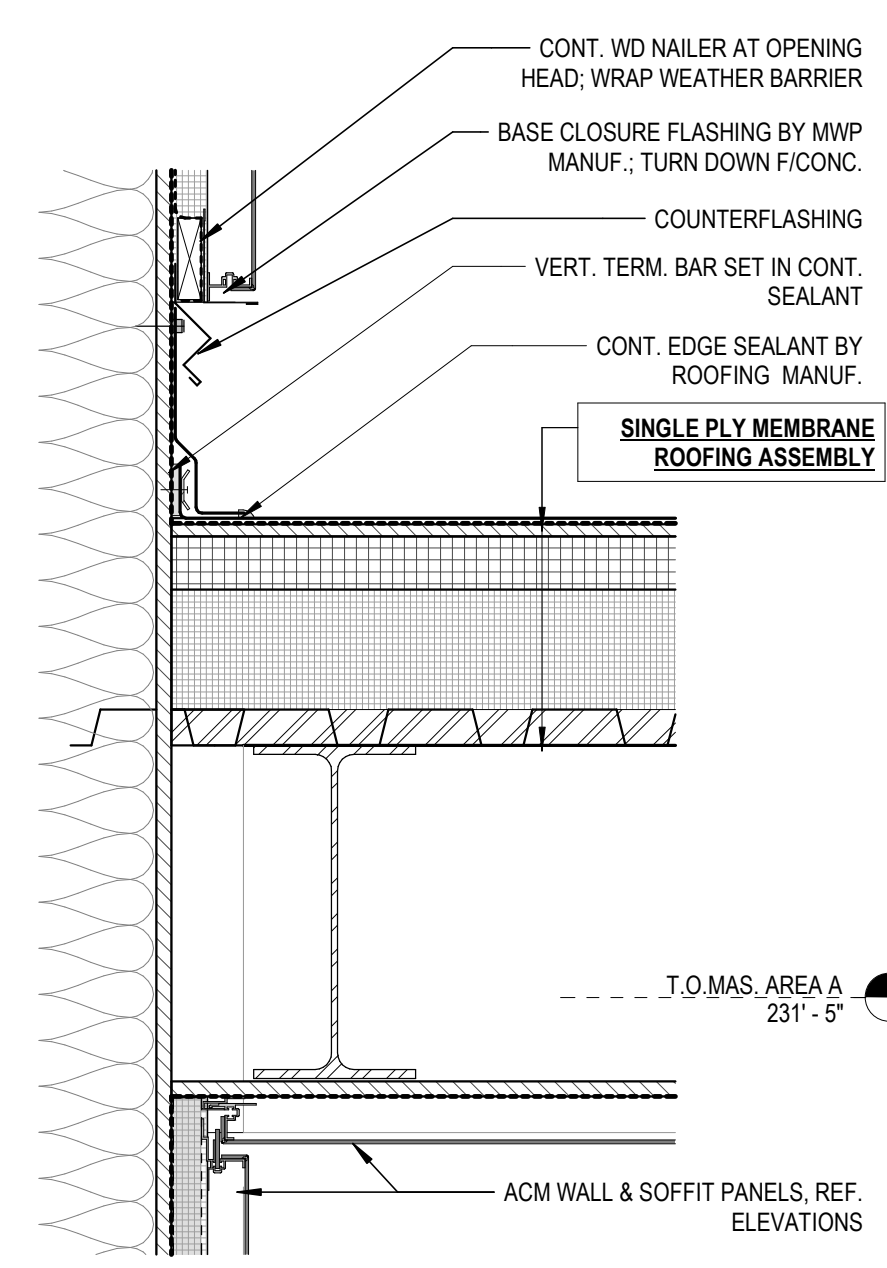
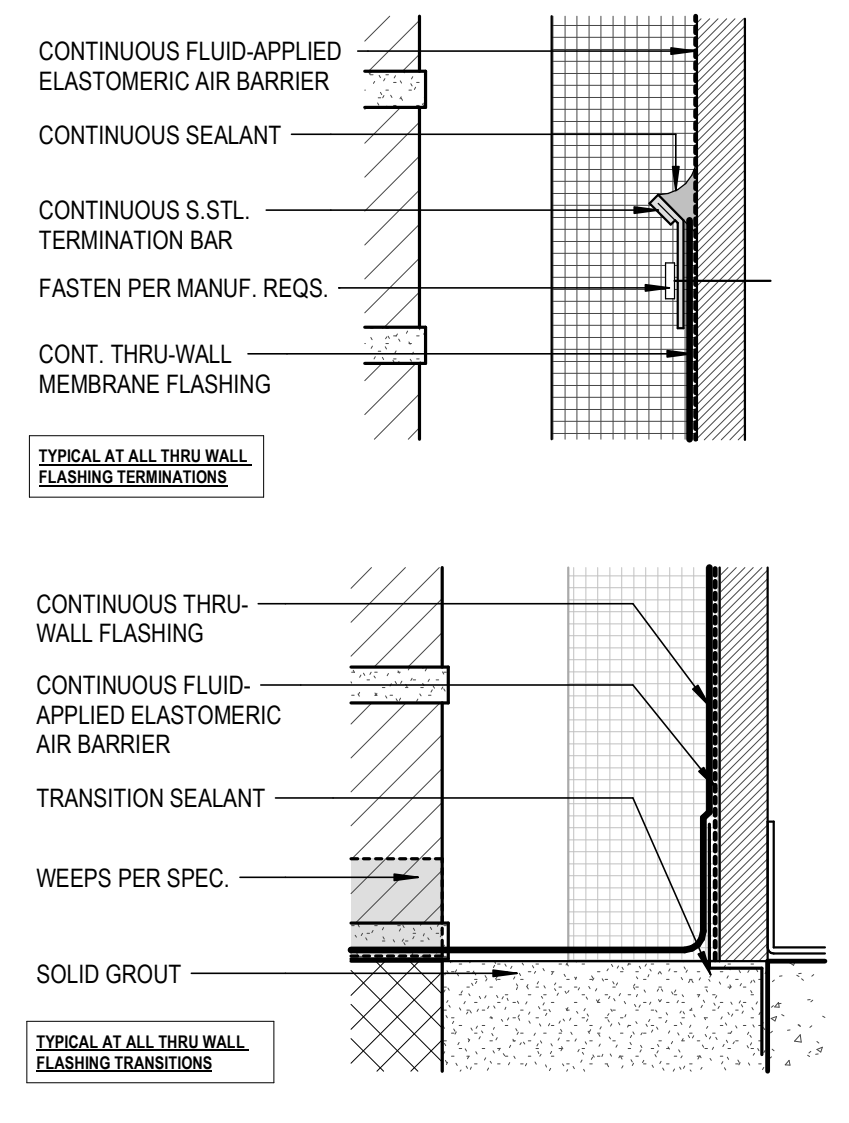
7 SECTION DETAIL
1 1/2" = 1'-0"



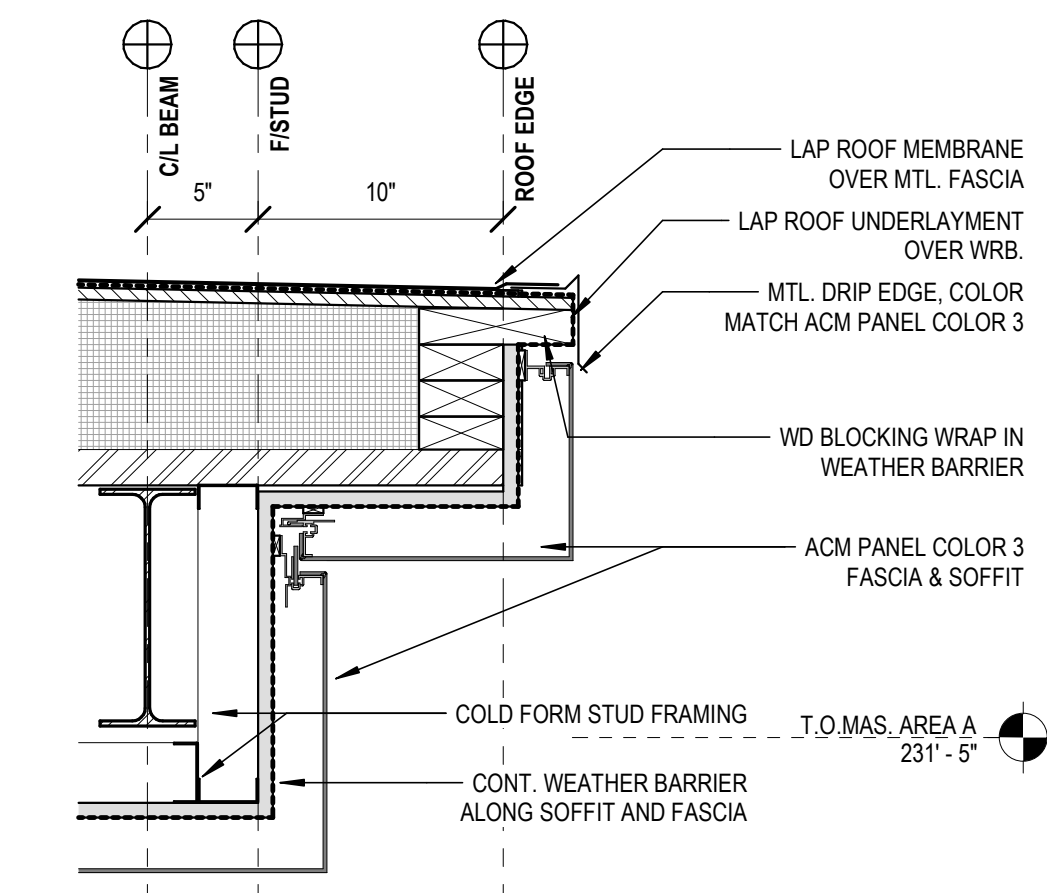
6 SECTION DETAIL
1 1/2" = 1'-0"



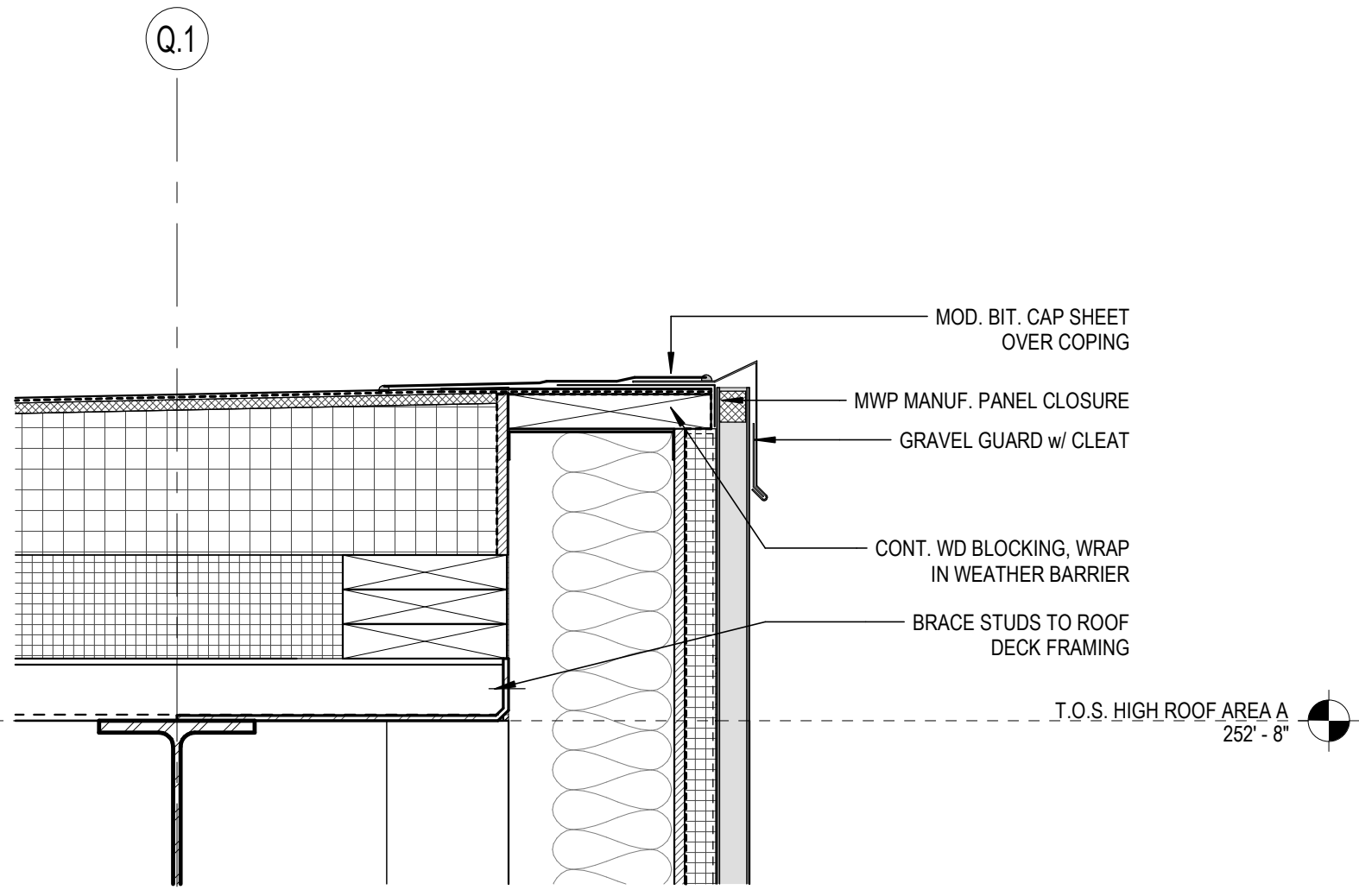
5 SECTION DETAIL
1 1/2" = 1'-0"



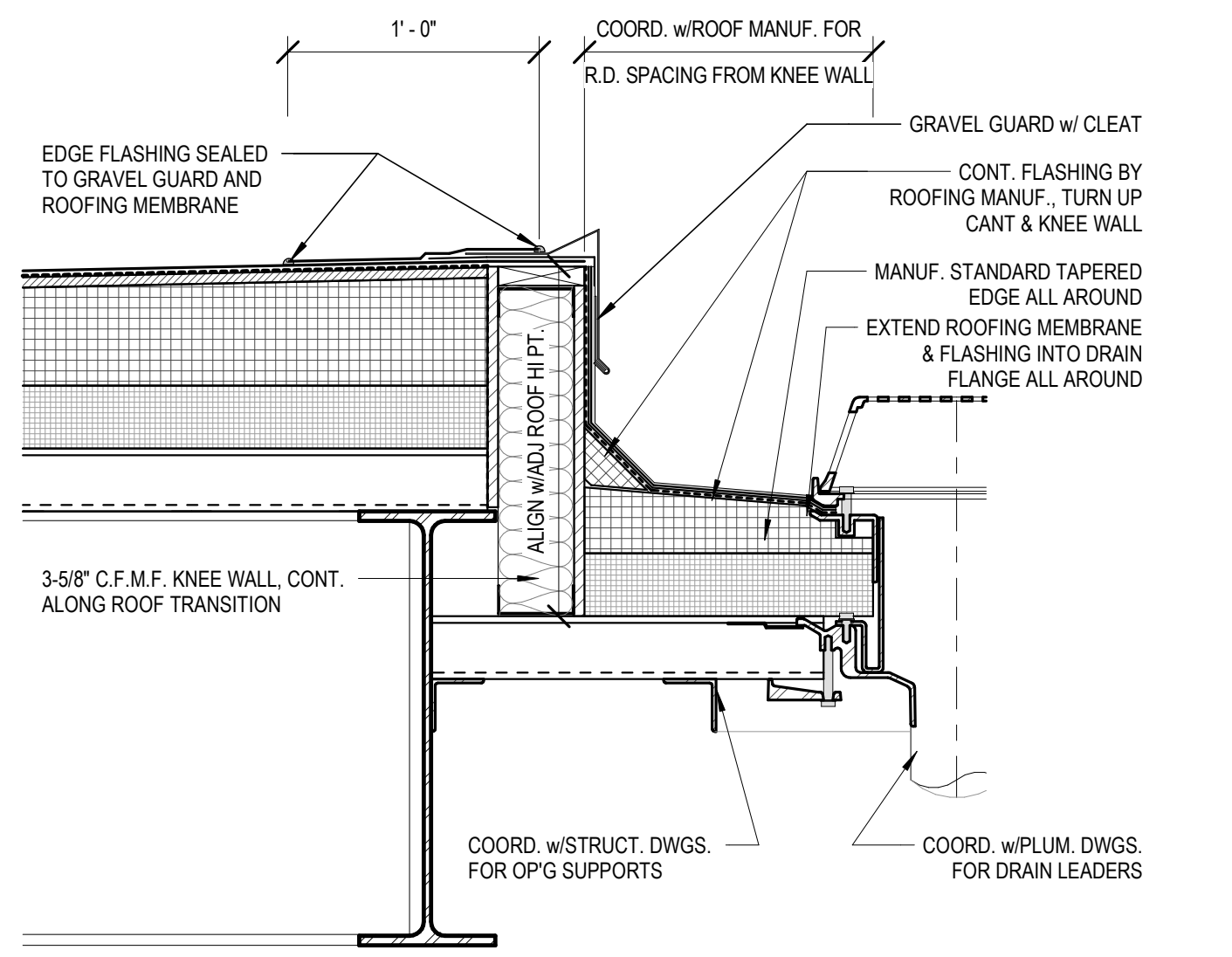
9 AREA A - SECT. DTL 24
1 1/2" = 1'-0"



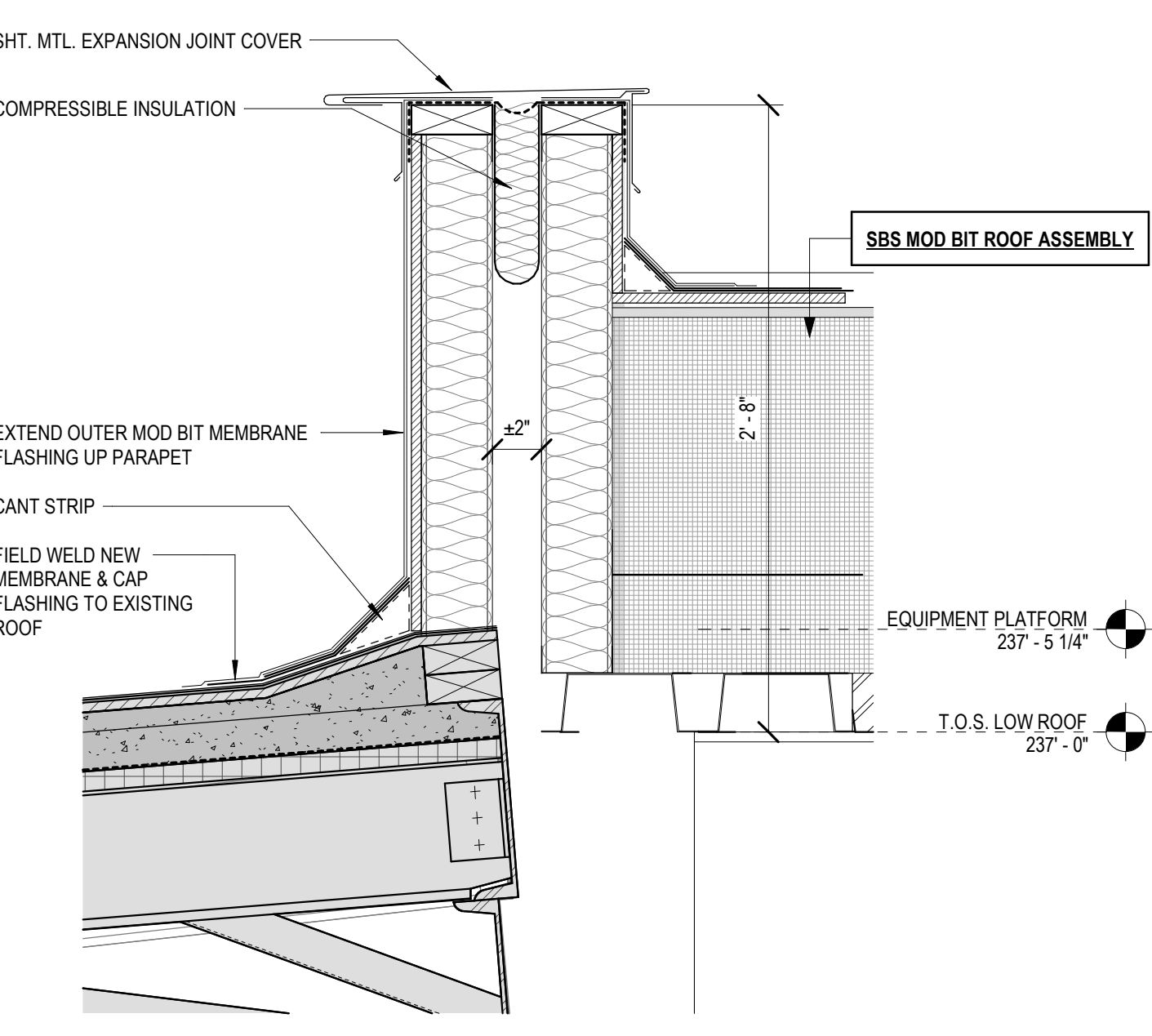
8 SECTION DETAIL
1 1/2" = 1'-0"



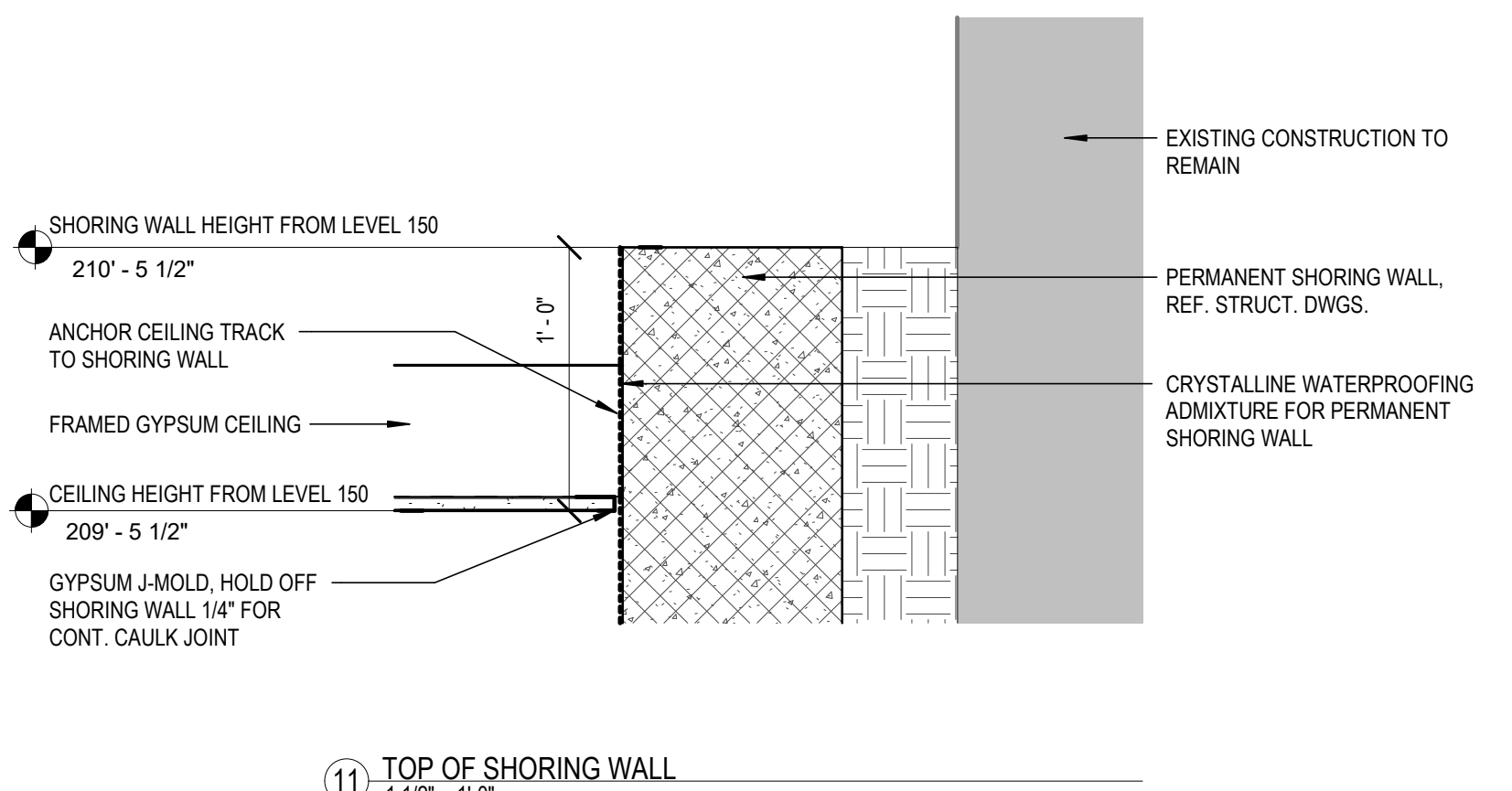
4 SECTION DETAIL
1 1/2" = 1'-0"



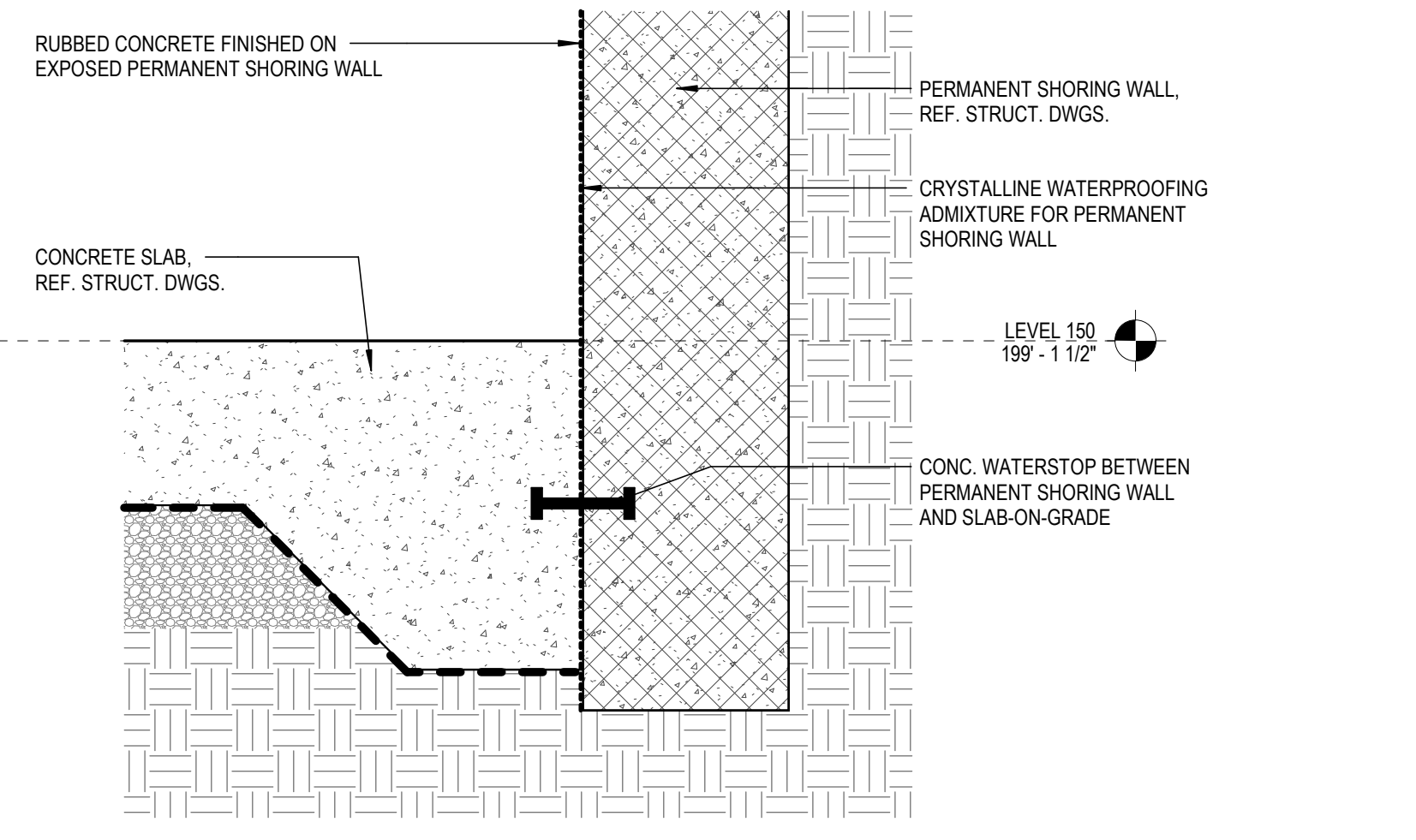
3 SECTION DETAIL
1 1/2" = 1'-0"



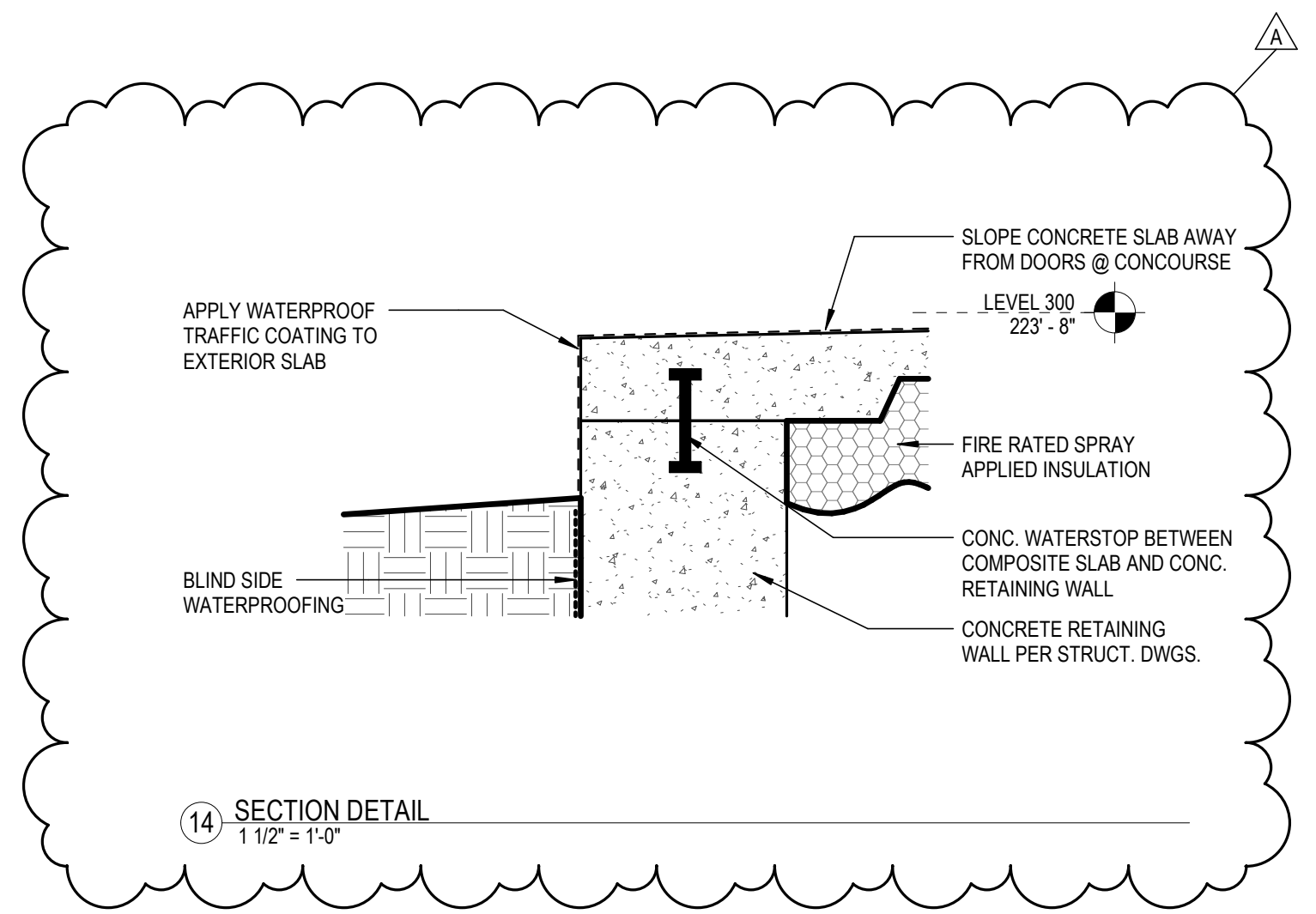
2 SECTION DETAIL
1 1/2" = 1'-0"



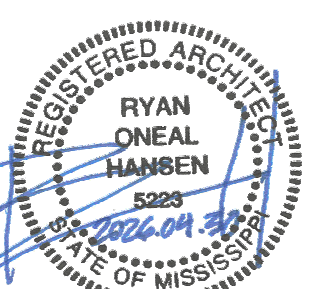
11 TOP OF SHORING WALL
1 1/2" = 1'-0"



10 BOTTOM OF SHORING WALL
1 1/2" = 1'-0"



14 SECTION DETAIL
1 1/2" = 1'-0"



2026.04.30

CONSTRUCTION DOCUMENTS

WBA # 23-063

| NO. | DESCRIPTION | DATE |
|-----|-------------|----------|
| A | ADDENDUM 01 | 05.22.26 |

A404
AREA A SECTION DETAILS