

ODYSSY

— AI —

Odysseyai.io

CAPABILITIES



Odyssey AI Inc. has an IP portfolio of 19 computer intelligent inventions and platforms, originating from conceptualizing, designing, building, and deploying these highly value-driven AI solutions that perform above expectations, and highly minimize hallucinations and distortions.



We work with commercial and public-sector clients to tailor and license our IP, jointly or through partnerships (currently negotiating 6 via two companies) to leverage our innovative AI solutions that will improve efficiency to save operational resources and increase revenue.



The Odyssey AI Inc. development team, composed of mathematicians, engineers, data scientists, and full-stack developers, are working on new mathematical models that use rule-based cells, thousands that can be replaced in milliseconds to prevent 'call home' triggers, prevent hallucinations, and more accurately provide answers to prompts than current antiquated probabilistic and pattern matching LLMs offer.

FOUNDING TEAM



Steve Weeks



Data Scientist

Entrepreneur, Professor

Scott Martin



AI ARCHITECT

*Author, Inventor,
Professor*

Tara Mezzanotte



**VP of
Partnerships**

Inventor, Entrepreneur

Matthew Toloczko



CFO

*Entrepreneur,
Analyst*

Our Executive Team has 25 years of Experience in AI and Data Science

PAST AI CLIENTS



JJ International

- Optimization Models Based on Thermodynamic Principles for ICBM Anomaly Sensory Detection and to Restructure Maintenance and Repair Schedules to increase National Security

Aquiline Drones

- Machine Vision for Object Detection, Identification, and Tracking
- Machine Learning for Real-Time Drone Pilot Training
- Serious Game Development to Teach the FAA Part 107 Course

Micron Technology

- Manufacturing Acoustic Machine Learning to Predict Memory Fabrication Breakdowns and avoid \$1M per hour losses

Scriyb LLC

- Education & Training Cluster Predictive Analytics to Assign Ideal Learners in an Online Course
- Generative Cycle GANs and Context Response Generation to Adjust Chat Bot Emotions
- Auto-Regression Language Modeling

Professions Quest LLC

- Healthcare and Pharmacy Machine Learning-Enhanced Game to Improve All Health Professionals' Collaboration and Communication to prevent patient treatment mistakes and errors

Our Executive Team has Successfully Completed Many AI Client Contracts.

RECENT IP



- **An Artificial General Intelligence Super Swarming System (S³) 2026 (USPTO filed)**

S³ Deploys Collaborating Multi-Task Agents that can Swarm, Self-learn, Correct, and Dynamically and Infinitively Spawn New Agents as Required for an Assigned Tasks. The Swarm is able to act, react, and adapt faster than a similar system requiring human intervention or control. Lastly, S³ will have complete control within their domain, while humans may maintain overall control at the root or base layer.

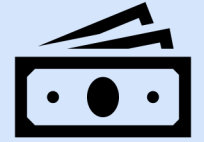
- **AI Advisory Agent for eTMF Creation and Management 2026 (USPTO filed)**

A regulator-friendly intelligence platform for an AI-powered electronic Clinical Trial Master File creation that successfully survives audits, makes clinical trial operation teams more productive and efficient, and improves patient safety. In summary, the Advisory Agent eTMF is a validated, GxP (Good Clinical Practice) compliant system that manages all essential trial documents (ICH-GCP Section 8), continually assesses accuracy, completeness, quality, and timeliness.

- **Reference Architecture Employing Retriever-First Question and Answer Solutions with Citations for Validation and Verification of Public LLM Output (RFVV) 2026 (USPTO filed)**

RFVV operating process is as follows: Query → Retriever (documents) → Re-ranker (optional) → Generator (LLM) + math engine verifier → Response with inline citations and symbolic check results. The provenance and citation format includes chunking metadata, using a unique inline citation format, potential source snippets for quick verification, and finally RFVV employs a 'trust score' that computes a small provenance score per claim based on retrieval similarity + re-ranker score + whether CAS verified the arithmetic if necessary.

REVENUE / SALES



Revenue generated from the licensing of patented/patent-pending intellectual property, and through fixed priced, high-margin commercial and government contracts directly related to the customization of the licensed IP.



Execute up to 12 commercial and/or government contracts (FPCs) over the next 2 years, starting in 2026, within the \$100K-\$5M range that can be completed and deployed with a 75% gross average margin.

COMMITTED TO ETHICS/COMPLIANCE



- The Odyssey AI Inc. Executive Team is comprised of Mathematicians, Engineers, Data Scientists, AI Architects, and Business Leaders whose core belief values the importance of ethics and compliance within the AI and the advanced emerging technology industries. Our Executive Team leverages decades of commercial and government compliance expertise to forge our Commitment Frameworks including:

- Ethics Commitment Policy

Bias and fairness, privacy, transparency and accountability, future foresight, human safety, social impact, environmental impact, interdisciplinary collaboration, regulatory compliance, and careful oversight of industry trends.

- Compliance Commitment Policy

Adherence to legal, regulations, and operational standards throughout design and deployment, mitigation of risks such as data breaches and algorithmic bias, structured review approaches including ethical impact assessments, transparency measures, continuous monitoring, explainability, data privacy and security, risk management, human oversight, future foresight, and continuous improvement.

ASK & EXIT...



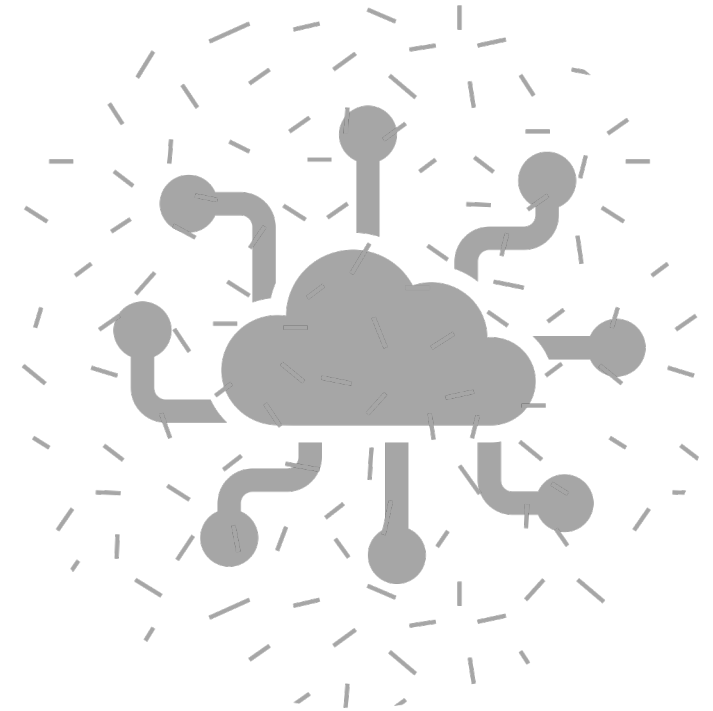
\$2M Convertible Note, 25% Discount Rate
For USPTO Filing Fees and Lock Down our All-
Star Development Teams

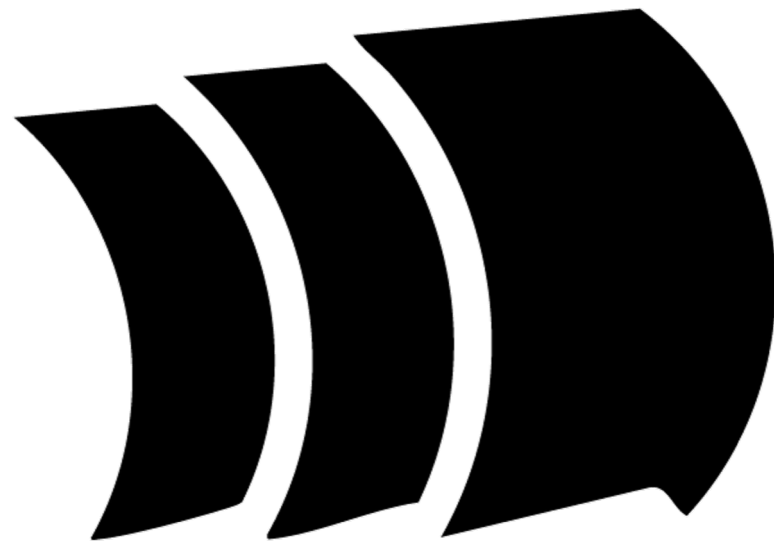


Inventory of 19+ Patents/Patent-Pending
Inventions, Growing Each Month
IP Portfolio Value: \$50M+



Exit: 3 Years @ \$300M +





ODYSSY

— AI —

WWW.ODYSSYAI.IO