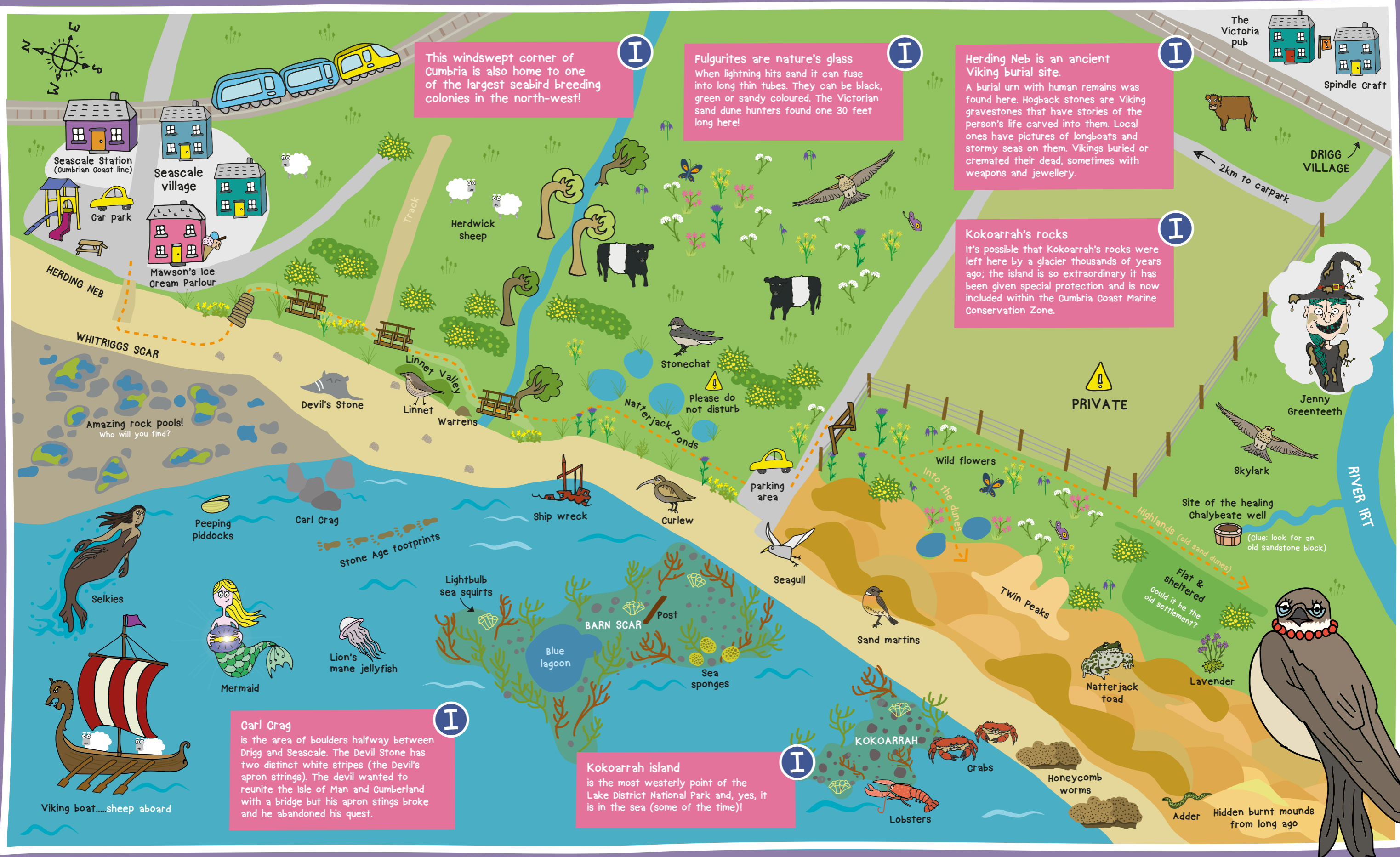


Drigg - The Sand Martin's Tale



I This windswept corner of Cumbria is also home to one of the largest seabird breeding colonies in the north-west!

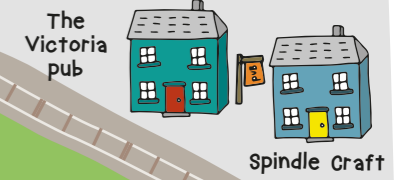
I Fulgurites are nature's glass. When lightning hits sand it can fuse into long thin tubes. They can be black, green or sandy coloured. The Victorian sand dune hunters found one 30 feet long here!

I Herding Neb is an ancient Viking burial site. A burial urn with human remains was found here. Hogback stones are Viking gravestones that have stories of the person's life carved into them. Local ones have pictures of longboats and stormy seas on them. Vikings buried or cremated their dead, sometimes with weapons and jewellery.

I Kokoarrah's rocks. It's possible that Kokoarrah's rocks were left here by a glacier thousands of years ago; the island is so extraordinary it has been given special protection and is now included within the Cumbria Coast Marine Conservation Zone.

I Carl Crag is the area of boulders halfway between Drigg and Seascale. The Devil Stone has two distinct white stripes (the Devil's apron strings). The devil wanted to reunite the Isle of Man and Cumberland with a bridge but his apron stings broke and he abandoned his quest.

I Kokoarrah island is the most westerly point of the Lake District National Park and, yes, it is in the sea (some of the time)!



Trail Safety Information
This Tale Trail explores the coastal area between Seascale and the sand dunes around Drigg. The terrain is a mixture of beach, sand dune paths and quiet roads. It is part of the famous Cumbria Coastal

Way. Please stick to the marked footpaths and avoid the unstable dune areas.
!!The stretch along the coast is tidal, so please check the tide timetables before

setting off. The tidal flats have areas of sinking sand and deep channels, and although it's tempting to walk off shore please be aware that the tide returns very quickly!!

Discover more at
www.taletrails.co.uk
westernlakedistrict.com/
www.visitlakedistrict.com/explore/areas-of-cumbria/western-lakes
Map illustration and design by Custard Graphic Design
www.custard-graphic-design.co.uk