

A large, spreading acacia tree stands on the left side of a vast, flat savanna landscape. The ground is covered in dry, yellowish-brown grass. In the distance, a low, rocky hill is visible under a clear, light blue sky. The overall scene is serene and natural.

# TANZANIA

## CURATING WILD SPACES

Lisa Goldsmith

### FROM MATERIALS TO MOOD

Sourcing & Styling Safari Lodges Rooted in Place

*All layouts, sequencing, and concepts are the intellectual property of the author and are shared in confidence for review purposes only. Images are included for reference and inspiration and remain the property of their respective owners. Curated by Lisa Goldsmith*

GROUNDED IN WILDLIFE & COMMUNITY, DESIGNED WITH A LIGHT FOOTPRINT



# DESIGN INTENT

Refined

Intentional

Grounded

Restrained

# MATERIALS ROOTED IN SUSTAINABILITY

Sisal | recycled glass | terracotta

Natural fibers and crafted finishes

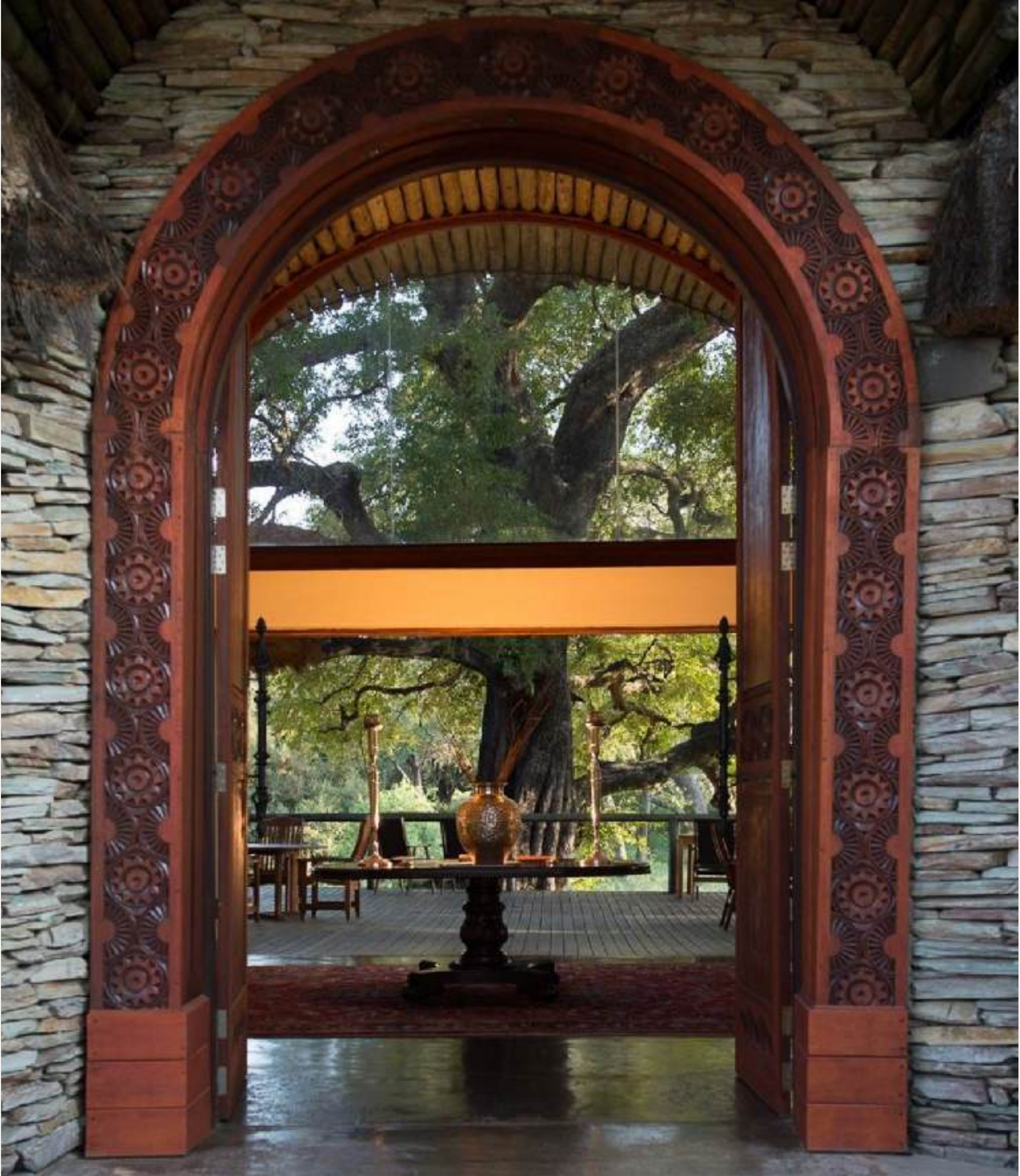
Mvule timber | volcanic stone | lime plaster

Durable materials shaped by landscape

Compressed earth | rammed earth | polished concrete

Low-impact, climate-responsive construction

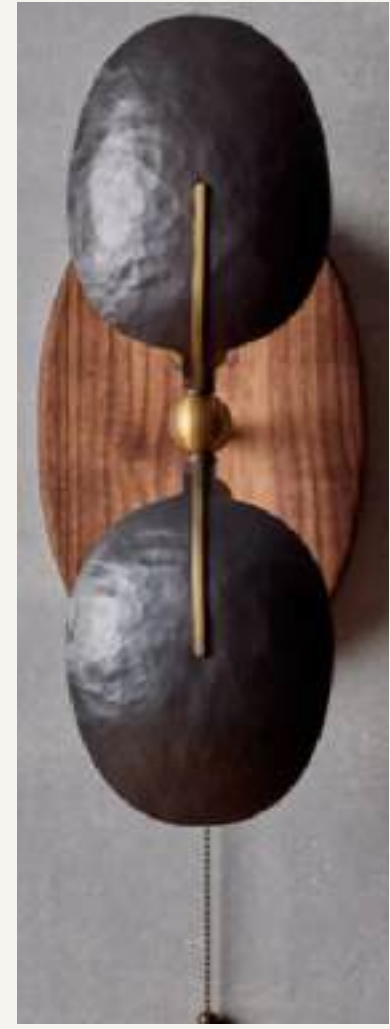
ENTRYWAYS | QUIET STATEMENTS ON ARRIVAL





# GATHERING SPACES

Linen | leather | warm woods | layered seating



SOFA UPHOLSTERED IN LINEN



# BEDROOMS

Soft layers, warmth & restraint





# BATHROOMS

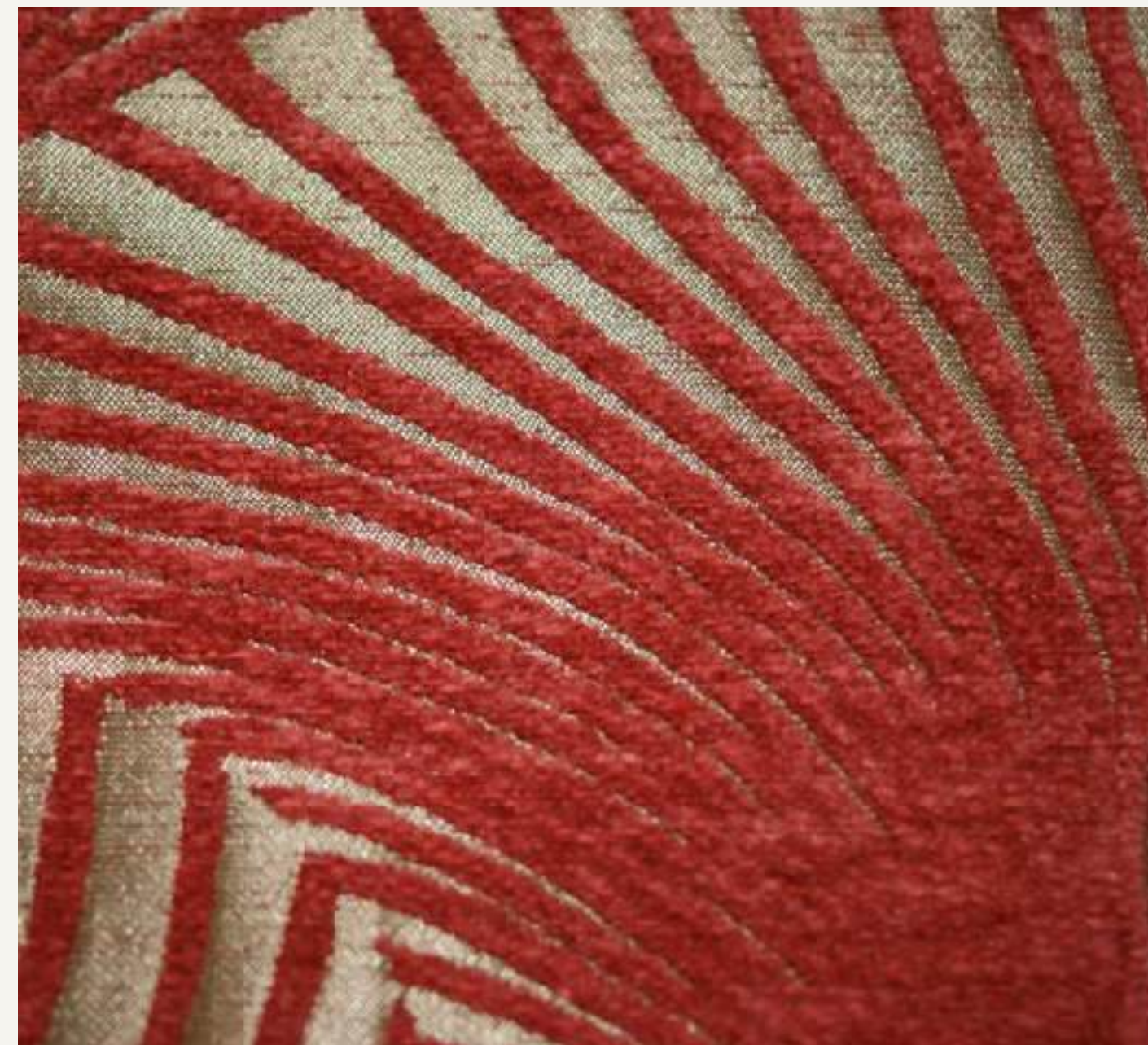
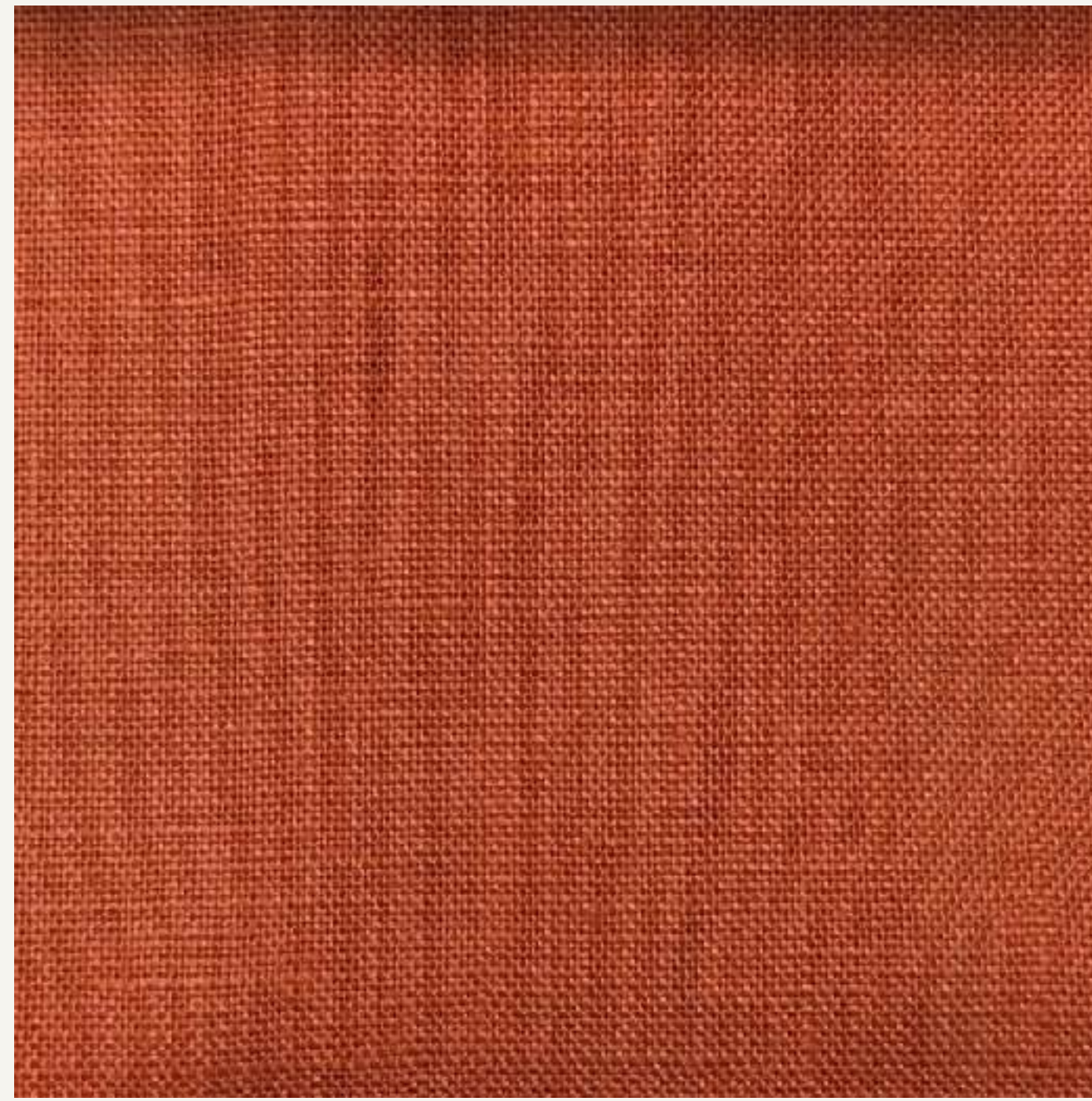
A mix of travertine, stone, & natural fibers





# TEXTILES

Upholstery in warm & mineral tones





# DINING

Indoor & outdoor dining | sculptural forms





# OUTDOOR SPACES

Private decks | fireside gatherings & shared evenings

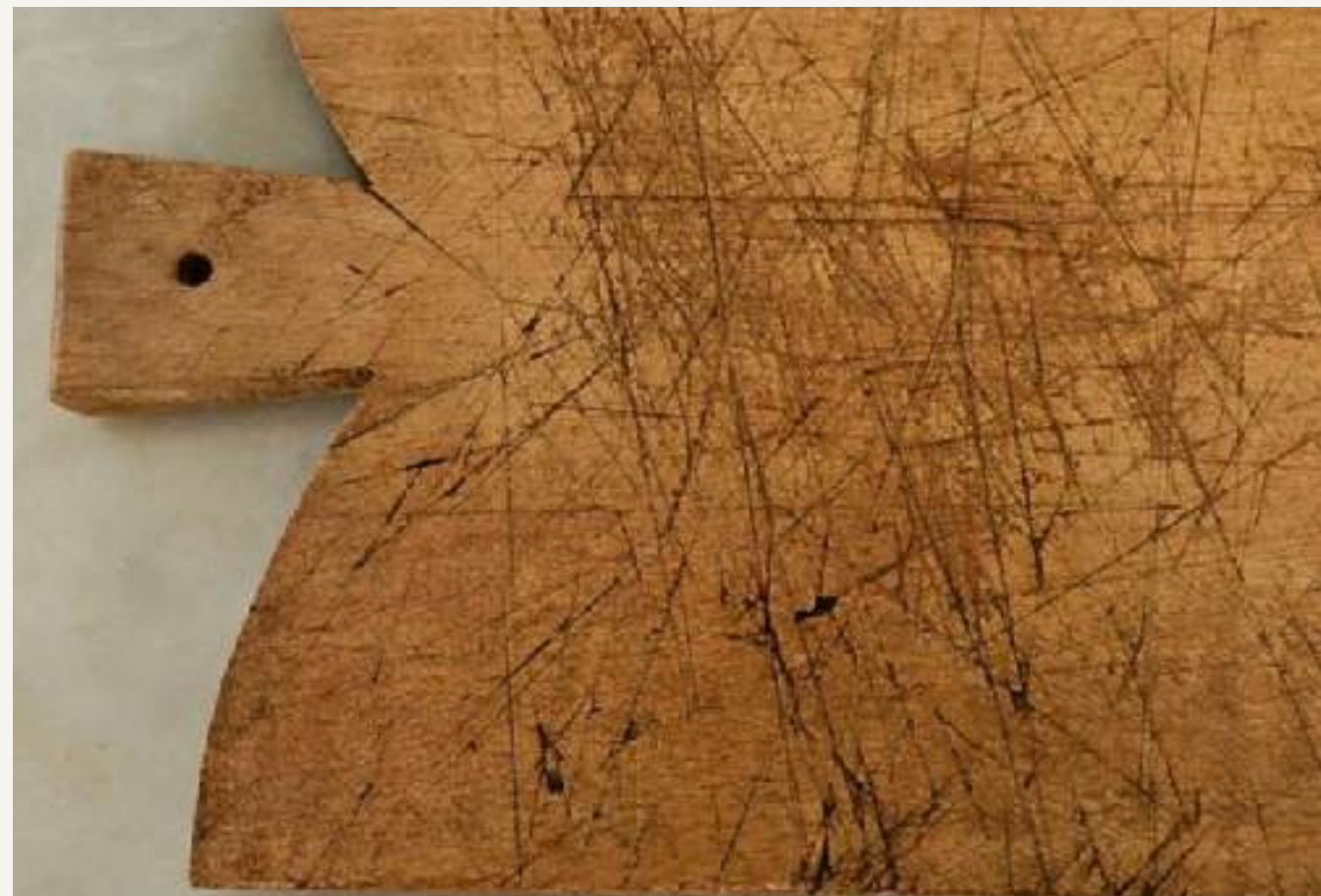




# TABLEWARE & OBJECTS

Woods | ceramics | artisan craft







ART

Texture, contract and presence







Thank you for taking the time to view this presentation.

I'd be happy to explore potential collaborations in styling, sourcing and lodge direction.

Please get in touch:

[lisa@headedtoafrica.com](mailto:lisa@headedtoafrica.com)

US +1 323 420 5390

UK +44 7477 014320