



SouthSide

E N T E R P R I S E S P T Y L T D.

Excavating & Earthmoving Equipment Hire

Capability Statement

TABLE OF CONTENT

03	INTRODUCTION	10	CERTIFICATIONS
04	ABOUT US	11	SERVICES
05	ABOUT THE GROUP	12	SAFETY
06	OUR MISSION STATEMENT	13	FEEDBACK
07	OUR TEAM	14	OUR PORTFOLIO
08	OUR EQUIPMENT	16	CONTACT US
09	OUR SERVICE		

“There are two types of people who will tell you that you cannot make a difference in this world: those who are afraid to try and those who are afraid you will succeed.”

- Ray Goforth

❖ Statewide Coverage ❖ Operators Available ❖ Wide Range of Attachments ❖ Safety First ❖ Half Day Rates ❖ Quality Equipment ❖ Personalized Service

For further assistance, call 0425 562 622 or visit our website for more details www.southsideenterprises.com.au



❖ Statewide Coverage ❖ Operators Available ❖ Wide of Range Attachments ❖ No Environmental Levy ❖ Safety First ❖ Quality Equipment ❖ Personalized Service

For further assistance, call 0425 562 622 or visit our website for more details www.southsideenterprises.com.au



JJ Stephens
Managing Director

“Southside Enterprises, Excavating & Earthmoving Equipment Hire is committed to maintaining and building upon our reputation and brand by ‘Going the Extra Mile to Meet Hire Demands’”

JJ Stephens
Founder and Managing Director of Southside Enterprises Pty Ltd – Excavating & Earthmoving Equipment Hire

It was Southside Enterprises Pty Ltd.'s founder and Managing Director JJ Stephens vision to create a plant hire company that not only provided the right machine, but provided the perfect package: the right machine and operator, in a safe cost effective and efficient manner. And we know the best way of achieving this is by employing outstanding people.

The vision has been realised and the company is growing, and carrying with it a reputation for quality, continual investment in staff and equipment and above all customer satisfaction.

With an expansive fleet of modern plant and equipment, Southside provides operated and contract hire (dry & wet hire plant) to a variety of sectors within construction, civil works, public utilities, ground works, highways maintenance and demolition.

With a determination to succeed and commitment to delivery, Southside's mission is 'Going the Extra Mile to Meet Hire Demands' by delivering exactly what the customer wants.

SOUTHSIDE ENTERPRISES'S VISION IS TO ENSURE A SAFE AND EFFICIENT HIRE MARKET. OUR KEY PRIORITY IS QUALITY OF SERVICE.

To achieve this by,

- Avoiding the worst, put safety first
- Employing highly skilled and well trained staff
- Deliver the highest quality
- Excel at clear and concise communication
- Personalised service
- Leading investor in H&S measures
- Caring for our environment.



❖ Statewide Coverage ❖ Operators Available ❖ Wide of Range Attachments ❖ Safety First ❖ Quality Equipment ❖ Personalized Service

For further assistance, call 0425 562 622 or visit our website for more details www.southsideenterprises.com.au

Our Management Team is one of the most experience around. As a result, Southside have a unique understanding of their customer needs, and the necessary experience to deliver a comprehensive end to end service that exceeds expectations.



If required, we can arrange site visits to assist with choosing the correct equipment should there be any doubts
Flexible delivery and collection times means you have your machinery and equipment on site when you need **it**
A plant renewal program ensures our fleet of machines is modern and up to date

✓ Avoid the worst, put safety first

Southside number one priority is safety. Southside's modern fleet and thorough pre-delivery inspection and handover ensure equipment arrives on site in time and on spec in perfect condition. All the equipment has a:

1. Full service history
2. Maintenance File
3. Safety Equipment
4. Safe Work Method Statement
5. Operational Manual

*Maintenance records can be requested for equipment hired by emailing us at admin@southsideenterprises.com.au.

✓ Employing highly skilled and well trained staff

Southside can provide operators when hiring equipment. All operators are fully licensed and well trained with demonstrated skills to ensure the job tasks are carried out in a safe and reliable manner. When requesting for an operator, let us know if specific licenses are required and/if an induction need to be attended prior to pre-start..

✓ Deliver the highest quality

A plant renewal program ensures our fleet of machines is of the highest standard.

With hiring equipment comes significant advantages:

- Saving you capital outlay upfront on long term or short hire
- Eliminate ongoing storage costs
- Eliminate maintenance costs as well as, us needing the skilled personnel to undertake all of this.
- Emergency breakdown support
- Access to a wide range of optional attachments, that can be used across the hire fleet as required by the customer.

Southside is happy to discuss your individual requirements.

✓ Excel at clear and concise communication

In detail pre-delivery inspection and handover ensures all information regarding the Hire Agreement and Southside Terms & Conditions are clearly understood and acknowledged. A copy of the contract and pre-delivery inspection will be provided to the hirer.

✓ Personalised service

Southside staff are very friendly and will work with you to ensure no job opportunity is lost. Please do not hesitate to call us for your hire needs or even when on site and you need help, if we are unable to (which there will always be the slightest possibility) we will find someone that can help find a solution for you. Southside provide "door to door service" and deliver equipment statewide. Alternatively, you can DIY and hire a trailer from us. All mini track loaders and 1 Ton- 3.5 Ton excavators comes with a transportable trailer which saves you money on transport. Monthly newsletters and occasional specials are communicated regularly.

WE ARE ALL PASSIONATE PEOPLE

We want every hire to be on time, on spec and working straight away – maximum productivity with no hidden costs. While this sounds simple this takes hard work, belief and commitment from everyone in the team.

*We strive to **maintain our mission of “Going the Extra Mile to Meet Hire Demands” every day** by improving and exceeding our customer requirements in every area of our service*

Led by JJ Stephens, Managing Director of Southside Enterprises Pty Ltd



❖ Statewide Coverage ❖ Operators Available ❖ Wide Range of Attachments ❖ Safety First ❖ Half Day Rates ❖ Quality Equipment ❖ Personalized Service

For further assistance, call 0425 562 622 or visit our website for more details www.southsideenterprises.com.au

MINI EXCAVATORS

1 TON
1.7 TON
2.8 TON
3 TON
3.5 TON
5.5 TON

WIDE RANGE OF EARTHMOVING
EQUIPMENT ATTACHMENTS

ROCKBREAKERS
AUGERS
FORKLIFT ATTACHMENT
POLE GRABS
RAKE BUCKETS
FULL RANGE BUCKETS
ROTARY ROCK & CONCRETE
CUTTER
BLOCK LIFTERS

MIDI EXCAVATORS

8.5 TON

13.5 TON

Bigger SIZES available on request



COMPACTORS

MULCHERS

TEMPORARY FENCING

FUEL TRAILERS

WIDE RANGE OF
EQUIPMENT
AVAILABLE

HYDRAULIC QUICK HITCH
FITTED TO 2.8 TON - 13.5 TON
EXCAVATORS

All Equipment is MINE SPEC

MINI TRACK LOADERS

TRACK LOADERS

SKID STEERS



TRANSPORT PLANT
TRAILERS TO SUIT 1 TON –
3.5 TON EXCAVATORS

2 TON TIPPER TRAILER

3.5 TON RAMPS

VACUUM
EXCAVATORS



THE ONLY WAY TO DO GREAT WORK IS TO LOVE AND ENJOY WHAT YOU DO

We are unlikely to be the cheapest as we believe in the best service and backup. That's why Southside have a commitment to maintaining a modern fleet that is less likely to break down, ultimately saving you time and money. It is reassuring to know that, if a machine does encounter problems, Southside can provide assistance on site.



- 24-hour operation and call out service
- Single point of contact keeps everything simple
- Streamlined administration that works hand in hand with our processing system, means access to orders, invoices, statements and customer records are immediately available.

❖ Statewide Coverage ❖ Operators Available ❖ Wide Range of Attachments ❖ Safety First ❖ Half Day Rates ❖ Quality Equipment ❖ Personalized Service

For further assistance, call 0425 562 622 or visit our website for more details www.southsideenterprises.com.au

Southside's Certifications.

- ✓ Public Liability - up to \$20,000,000
- ✓ Workers Compensation - up to \$50,000,000
- ✓ Superannuation - as directed by the Australian Tax Office
- ✓ Payroll Tax - as directed by current State OSR Legislation
- ✓ PAYG/GST - as directed by the Taxation Office
- ✓ All our Earthmoving Equipment is fully Insured.

Certificates of currencies and all supporting documentation is available on request by emailing us at admin@southsideenterprises.com.au or calling us on (08) 9417 2553

We never stand still and are continually striving for improvement and innovative ways to improve our service to our customers.

CALL **0425 562 622** FOR ALL YOUR HIRE NEEDS, CHOOSE SOUTHSIDE TO SAVE YOU TIME AND MONEY ON SOURCING AND MANAGING HIRE EQUIPMENT.

❖ Statewide Coverage ❖ Operators Available ❖ Wide Range of Attachments ❖ Safety First ❖ Half Day Rates ❖ Quality Equipment ❖ Personalized Service

For further assistance, call 0425 562 622 or visit our website for more details www.southsideenterprises.com.au

• **DRY HIRE** (Equipment Hire without an operator DIY) OF EARTHMOVING EQUIPMENT includes but not limited to

- Excavators
- Vacuum Excavators
- Compactors
- Mini Utility Loaders
- Track Loaders
- 4.5 Ton Plant Trailers
- 2 Ton Tipper Trailers
- Temporary Fencing
- Block Lifters
- Rotary Concrete & Rock Cutters
- Forks
- Mulchers
- Buckets
- Pole Grabs
- Augers
- Rock Breakers

• **WET HIRE** (Equipment Hire with an operator)

• **SOUTHSIDE JOB SOLUTIONS**

- Swimming Pool Excavation
- Trenching
- Soakwell Installation
- Stormwater Drainage
- House Pad Preparation
- Site/Backyard Clean Ups
- Tree Stump Removal
- Rock Breaking
- Verge Cleaning
- Waste Removal
- Demolition
- Civil Works
- Pole Planting
- Vacuum Excavation
- Equipment Transportation
- Driveway Removals
- Post Hole Auger
- Retaining walls
- Reinstatements

Southside can also Supply Equipment & Services in relation to Traffic Management, Locating, Directional Drilling and Temporary Fencing.



All Southside equipment have an average age of 24 months and are fully equipped with safety equipment. Most of the equipment are mine spec ready. All our equipment is fully maintained to OEM specifications.

They are fitted/supplied with:

- ✓ Travel alarms
- ✓ Fire Extinguisher
- ✓ Canvas Seat Cover
- ✓ Revolving Flashing Light
- ✓ Lockable Battery Isolator
- ✓ External Emergency Stop Decals
- ✓ Reflective Tape
- ✓ Operational Manual (Located in back seat cover Compartment)
- ✓ Safe Work Method Statement & JRA (Upon Request tailored to Job Requirements)
- ✓ All Southside Equipment goes through an extensive pre-delivery inspection before it arrives on site or is picked -up from our workshop, ensuring that when it starts work it is in perfect condition.
- ✓ Equipment familiarisation are available on request
- ✓ 24-hour on call Assistance
- ✓ Pre-Start Checklists
- ✓ Operators Accreditations includes but not limited to
 - HR Heavy Vehicle Drivers Licence
 - NAC (Western Power Network Access Cards)
 - White Card (Construction Inductions Card)
 - High Risk Card
 - Licence to operate a Forklift Truck
 - Licence to Conduct Hydraulic Excavator AND/OR Bakhoe/Loader, Roller, Wheel Loader, Grader, Scraper, Bulk Water Truck, Tracker Dozer Operations

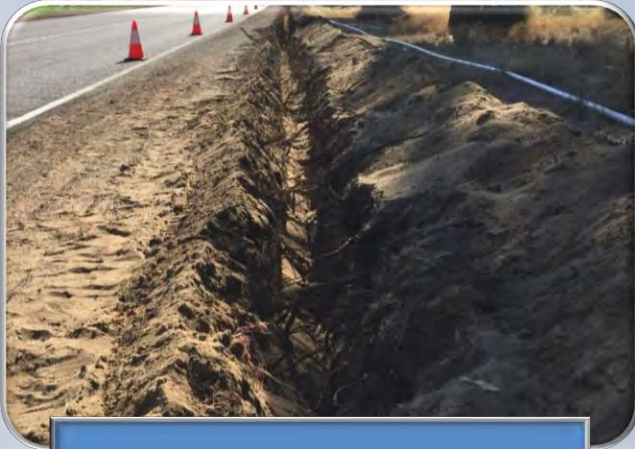




Tristan Merrick ▶ Southside Enterprises

7 November 2015 · Kwinana · 🌐

Thanks Jj for the excellent service and the use of your boxer/trencher. The speed and ease of use was quite surprising. Highly recommended to anyone that needs holes dug fast!



NBN Civil Link Installations

Contract Value \$120,000.00

Southside was approached by Sydney company to provide NBN Civil Link Installations in WA. Project Planning included Traffic Management, Labour Hire, Equipment Hire, DBYD Plans, Directional Drilling, Vacuum Excavations, Locating and Surveying. The client provided all the materials for this project.

Contract Term 6 months



Western Power Pole Planting in difficult access areas

Contract Value \$33,000.00

Southside was contacted to assist with Pole Planting in bad access locations due to Western Power Trucks being unable to get into boggy areas, whereas the Excavators with Pole Grab attachments was ideal. The Excavator with pole grab combination was used instead of EWP & Crane Borer. No time was lost and jobs were not cancelled.

Services included labour hire, equipment hire and occasional Rock Breaking.

Contract Term Ongoing

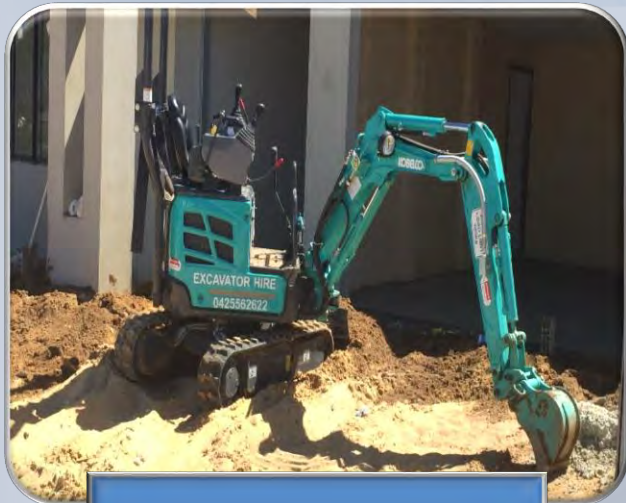


Western Power Reinforcing of Distribution Power Poles

Contract Value \$250,000.00

Southside was approached initially only for 2 x 3 Tonne Excavators with Pole Grabs & Transportable Trailers. Due to success achieved and increased priority to get the project completed within 3 months, an additional 8 x Excavators were requested immediately. The project was clarified as a P1 (Priority 1) and being high risk by Energy & Safety.

Contract Term 3 months



STORM WATER DRAINAGE

Contract Value \$25,000.00

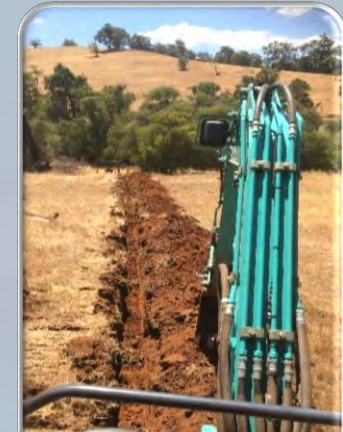
Builder Required storm water drainage to be installed and connected to installed soakwells .

Contract Term 3 months



INSTALLATION OF SOAKWELLS

Sub Contractor for Builder required installation of Soakwells for new properties to be build



TRENCHING FOR ELECTRICAL CABLE LAYING

Contract Value \$65,000.00

Installation & Connecting of Electrical cables. Services included trenching 800m, Cable Laying, Materials, Equipment Hire, Labour Hire & Back Fill.

Contract Term 2 Weeks



WESTERN AUSTRALIA BRANCH

5/130 Cutler Road

Jandakot WA 6164

(08) 9417 2553

0425 562 622

admin@southsideenterprises.com.au

www.southsideenterprises.com.au

