



# 2026

## GREATER SACRAMENTO AREA RELOCATION GUIDE



SHERRI PATTERSON TEAM

[www.sherripatterson.net](http://www.sherripatterson.net)

DRE#01273462

GUIDE  
REAL ESTATE

Forbes  
GLOBAL PROPERTIES

# WE ARE

## Here to help you settle in.

Relocation and the real estate process doesn't have to be stressful— our team listens to your unique needs, proactively communicates and puts our clients first to ensure every transaction goes smoothly and we exceed your expectations.

## All about relationships.

The Sherri Patterson Team brings open and honest communication, excellent negotiation skills and a WOW experience to each real estate transaction. Our exceptional customer service enables us to build lifelong relationships with our clients that extends far beyond the transaction. In fact, 100 percent of our business comes from past clients, friends and associates.

## More than real estate professionals.

We are your local experts for the greater Sacramento area. We look forward to not only serving all of your real estate needs, but also connecting you to our vibrant community and network of vendors you can trust.

[www.sherripatterson.net](http://www.sherripatterson.net)



"Sherri and Alyssa have been absolutely amazing to work with! They did a great job getting our house sold and then helping us find our new one. It was a changing market, but they stayed ahead of it with their great market knowledge and experience. They were professional, responsive, and truly cared about making the process smooth for us from start to finish. We're so grateful for all their hard work — highly recommend this team!"

**-Katie & Mike P.**

# FLY FIRST CLASS

WITH THE SHERRI PATTERSON TEAM

## BECOME A VIP CLIENT

The Sherri Patterson Team builds its business 100% by referral. As we're partying our way to the top, we love to show our appreciation for our clients who refer us to their colleagues, friends, and family.

# 92%

of people trust referrals from people they know.

## THE SPT CARE STANDARD

Our goal is to anticipate our clients' needs and go above and beyond to deliver a personalized real estate experience. We love what we do and enjoy building deep, meaningful, lifelong relationships.

### VIP CLIENTS GET ACCESS TO:



PARTIES &  
EVENTS



LOCAL  
VENDORS



NETWORK OF  
REALTORS



SEASONAL  
GIFTS

## What Do Our VIP Clients Have in Common? They've...

Sent us 2 or more referrals that have closed within the past calendar year.



For every client you refer, you will receive (1) entry into drawings which are held quarterly and annually. If you know anyone looking to buy or sell real estate this year, please contact us and we'll be happy to help!

Thank you!  
- The Sherri Patterson Team

[www.sherripatterson.net](http://www.sherripatterson.net) | 916-801-1105 | [sherri@sherripatterson.net](mailto:sherri@sherripatterson.net)

# WHY WE WORK BY REFERRAL

## MORE TIME TO SERVE YOU

Unlike many agents, our primary source of new business is referrals from people who know and trust us. That means we don't have to spend all our time prospecting for new leads. This allows us to dedicate ourselves fully to the activities that benefit you most and deliver truly exceptional service.

## SERVICE THAT CONTINUES AFTER THE SALE

We devote ourselves to serving the needs of our clients before, during and after each sale. Instead of disappearing after the closing, you can expect us to keep in touch. We will send you valuable information each month, and will also call from time to time just to check in and see if you need anything.

## SERVICE THAT WILL EXCEED YOUR EXPECTATIONS

We know we must earn your referrals, so we aim to exceed your expectations. We have a vested interest in making sure that you are completely satisfied at the end a transaction together. We want you to be so "fired-up" that you can't wait to tell your friends and family about us and the fantastic service you received! When you come across an opportunity, we'd appreciate you referring us to great people like yourself, who would benefit from the excellent service and personal attention we provide.

When it comes to finding a great service provider, there is nothing like getting a referral from someone you know and trust who has used that provider and received great service. That's why we choose to work by referral. Trust is a big deal, especially when it comes to the professional you choose to handle the largest purchase you'll ever make—the purchase (or sale) of a home. Here are the benefits to you:

## WHAT WE CAN DO FOR YOU BEFORE, AFTER AND DURING THE SALE.

Give advice on upgrades that will enhance your property's resale value.

Provide you with up-to-date information and statistics on local market conditions.

Refer you to our trusted list of handymen, general contractors, interior designers, roofers, painters, flooring installers, plumbing/electrical / HVAC specialists

## WE'RE PART OF A NETWORK OF AGENTS WHO SELL IN 1 OUT OF EVERY 8 HOMES NORTH AMERICA

If you have a friend or family member who is moving out of the area, We can ease the transition by making sure they are connected to the right agent!

# LUXURY SPECIALISTS

## *WE ARE CERTIFIED LUXURY HOME MARKETING SPECIALISTS™!*

Each of our agents at the Sherri Patterson Team have earned their Certified Luxury Home Marketing Specialist™ (CLHMS) designation and GUILD™ recognition.

Recognized as the mark of accomplishment in luxury markets around the world, the Certified Luxury Home Marketing Specialist™ (CLHMS) designation assures affluent buyers and sellers that the agents who have earned it have the knowledge, experience, competence, and confidence they require.

The CLHMS™ designation is earned by Institute Members with documented sales performance in the top 10% of their market.

The GUILD™ recognition is awarded after earning the CLHMS™ designation, and closing two transactions in the million-dollar and above residential market.

We look forward to sharing the latest marketing strategies, information on changing market conditions and providing all our clients -- including those with exceptional properties --- top notch service!



# CFSP<sup>TM</sup> CERTIFIED

## *ELEVATING TO BETTER SERVE YOU!*

Each of our agents at the Sherri Patterson Team has earned their Certified Full-Service Professional<sup>TM</sup> designation with Buffini & Company – the largest real estate coaching and training company in North America.

This designation ensures we are properly trained on how to go beyond expectations and deliver an industry-leading experience that really wows each client we represent.

Our dialed-in process when it comes to communication, negotiation and marketing, ensures every person is treated with personalized care, respect and the professionalism they deserve.

We understand that buying or selling a home is a big financial and emotional commitment. With this designation, we are equipped with the skills to offer first-class service during this important time in your life, while also protecting what is likely one of your largest financial assets.





08. Why Sacramento is THE Relocation Destination

09. Statistics

10. Ten Tips to Make Relocation Easy

12. Sacramento Map

13. Best Cities & Towns in the Sacramento Area

16. Sacramento Rankings & Rants

17. Best New Home Builders in the Area

18. Top Public Schools

23. Top Private Schools

26. Lifestyle: Farmers Markets, Dog Parks, Hiking Trails, Wineries

30. Meet Your Favorite Relocation Specialists

# *CONTENTS*

# 2.6 MILLION

HERE'S WHY

## ESTIMATED POPULATION OF SACRAMENTO METRO AREA

### ***Experience the Greater Sacramento Region.***

While we are one of the oldest regions in western United States, we are rapidly emerging as a national leader in several high-growth technology fields.

The Sacramento metropolitan area, which includes seven counties, has an estimated population of 2.6 million, is the fourth largest metro area in California after Los Angeles, San Francisco and San Diego.

The greater Sacramento region is home to some of the most beautiful rivers, lakes, hiking trails and sport teams such as the Sacramento Kings, the Sacramento River Cats, and Sac Republic.

One of the most affordable places to live in California, Sacramento is becoming a business and cultural hot spot, attracting an influx of medical professionals, entrepreneurs and other creative professionals. We are also ranked #6 of all U.S. metro areas for relocation. So, what's all the fuss about?

With our abundant and educated workforce, low cost living as well as excellent schools and booming housing market, The Sacramento area is home to thousands of relocating families each year.

***We hope our guide will show you around a bit and get you to stay a little longer.***



[www.sherripatterson.net](http://www.sherripatterson.net)

# \$559,000

**MEDIAN PROPERTY VALUE**

9.29% growth

**59% WHITE**

**23% HISPANIC**

**14% ASIAN**

**6% BLACK**

**63%**

HOMEOWNERSHIP RATE

**38**

MEDIAN AGE

# \$93,986

**MEDIAN HOUSEHOLD INCOME**

+ 5.33% growth

# STATS



## HERE'S HOW

# 10 TIPS TO MAKE RELOCATION EASY

## 1 Research.

What are you looking for in a neighborhood? Make a list of your priorities such as schools, recreation, safety, cost of living and especially take a look at the job market. Once you have a pretty good idea of what you're looking for, you can narrow down your search to house type, size and amenities.

## 2 Tour the area.

There's only so much you can learn about a place from online searches and photos! In order to really determine if an area is right for you and your family, you need to visit it. Having a dedicated relocation specialist show you around will help you make a decision based on experience.

## 3 Secure a job.

Are your skills, service, profession or business needed in the area you're prospecting? Make sure you'll be able to thrive in your career before making the move. If working with a recruiter or human resources personnel, get your offer letter before making an offer on a home or signing a lease.

## 4 Ask the locals.

One of the best ways to get to know an area is to ask the people who actually live there! While you're interviewing for a position, take some time out to meet up with anyone you know who lives in the area, including your real estate agent to ask questions about the area to get their honest opinions.

## 5 Get pre-approved.

If you're planning to purchase a home in the area, it's best to get pre-approved for a loan before looking at homes. This way, you know exactly what price range of homes you can afford and can come with an offer that's likely to be accepted once that time comes. Find a lender who will work with your particular circumstance or one whose expertise is in relocation.

## 6 Consider the stats.

Another good way to find out if an area will work for you is by taking a look at the most recent census or gathering demographic data from sites such as [Areavibes.com](http://Areavibes.com). Does the neighborhood you're considering fit what you're looking for? Will you fit in and be happy here?

## 7 Check the crime.

You want to make sure your new home is safe and sound, especially if you're moving your children with you. Check the crime rates and local registry for sex offenders to ensure your new home meets the needs of your family and your peace of mind.



## 8 Look at three.

After considering your priorities, your must-haves and deal breakers, narrow the list of your favorite homes down to your top three. Work with your real estate agent to view the homes.

## 9 Hire movers.

Will you be driving across the country in a huge truck of your belongings or will you hire movers to carry the load? If the latter, work with a reputable moving company to help bring household items to your new home.

## 10 Get plugged in.

Community is very important to many people. If you do not know anyone in the new area you will be relocating to, be sure to get plugged into a community that makes it easy to build relationships such as a church, parent-student committee or hobby group. Be sure to follow local groups on social media.

# MEDICAL PROFESSIONAL RELOCATION SPECIALISTS

AT THE SHERRI PATTERSON TEAM



## PHYSICIAN LOAN PROGRAMS

We work with lenders who offer Professional Mortgage Lending Programs designed to make homeownership more attainable for those in the medical field.



## AREA EXPERTISE

Our team has a combined 50+ years of area expertise in the Greater Sacramento Area. We are familiar with the top neighborhoods, schools and the areas that will best suit your needs.



## PARTNERSHIPS WITH TOP HOSPITALS

We have relationships with the best hospitals in the area, including Sutter Medical Group, Dignity Health, UC Davis and Kaiser Permanente.

**59%** of our transactions  
are with medical  
professionals.



Sutter Health

UCDAVIS



“I wanted to thank you for all the help and resources for relocation. I wanted to especially thank you for a great tour. It was very helpful and informative. I think this opportunity would be a great fit for me.” – Dr. F



# THE AREA

## BEST TOWNS AND CITIES TO LIVE IN SAC

SOURCE: point2homes.com, Zillow



### DOWNTOWN SAC

**10.4%** of people own their homes

Home to the new Golden 1 Center, Downtown Commons Shopping Plaza, The Sawyer Hotel and more. Only minutes away from historic Old Town Sacramento, in the downtown area you can also enjoy local restaurants and riverfront dining nearby, which makes for a vibrant night life for residents to enjoy.

57.8%		Median Age	37
42.2%		Average Household Income	\$78,016
		Family Households	16.7%
		Median Home Value	\$626,400

### MIDTOWN

**28.1%** of people own their homes

Offers the young working class a lively environment to live. With most of the population being renters, 28% of the 4,420 population own a home. There are many restaurants with a great night life to accommodate many different people. Downtown is walking distance from some parts of midtown as well as Old Town Sacramento.

47.7%		Median Age	34
52.3%		Average Household Income	\$112,319
		Family Households	26.4%
		Median Home Value	\$641,527

### EAST SACRAMENTO

**50.2%** of people own their homes

Prestigious area known for low crime, renowned private schools and old-time charm, East Sacramento is a main attraction during the holidays featuring the Fabulous 40s. With downtown Sacramento just minutes away, you can enjoy fine dining, shopping, as well as various sporting events all year long.

48.5%		Median Age	36
51.5%		Average Household Income	\$150,972
		Family Households	41.5%
		Median Home Value	\$754,222

# THE AREA

## BEST TOWNS AND CITIES TO LIVE IN SAC

SOURCE: point2homes.com, Zillow



### ELK GROVE

**73.9%** of people own their homes

A family-oriented community where opportunity is around every corner. The city offers everything from starter homes to ranch estates, and provides a safe, youthful environment where families put down roots. Perhaps one of the best things about Elk Grove is its gorgeous man-made lakes on which a few homes make their stay.

49.0%	♂	Median Age	39
51.0%	♀	Average Household Income	\$142,709
		Family Households	80.5%
		Median Home Value	\$625,897

### FOLSOM

**69%** of people own their homes

Rated one of the best cities to raise a family in Sacramento, Folsom has an excellent school district, plenty of recreation and family-centered activities. On a sunny day, you can find residents enjoying Folsom Lake, biking along the trails or shopping on historic Sutter Street or the newly built Palladio.

49.8%	♂	Median Age	40
50.2%	♀	Average Household Income	\$169,639
		Family Households	72.0%
		Median Home Value	\$746,759

### EL DORADO HILLS

**87.8%** of people own their homes

El Dorado Hills offers spectacular views of the Sacramento Valley and Folsom Lake, along with the Sierra Nevada Mountains. The area also offers a vast number of wineries in its backyard, located in Amador County and is also right around the corner from Apple Hill, a great place to take the family when the weather starts to cool down.

49.2%	♂	Median Age	45
50.8%	♀	Average Household Income	\$209,904
		Family Households	83.0%
		Median Home Value	\$888,215

# THE AREA

## BEST TOWNS AND CITIES TO LIVE IN SAC

SOURCE: point2homes.com, Zillow



### GRANITE BAY

**90.3%** of people own their homes

Offers a beautiful place to live for families moving to the Sacramento area. With little to no crime in the area and a population of 21,378 people, Granite Bay is a great place to own a home. Folsom Lake is just minutes away as well as Granite Bay Golf Club for those who like a day outdoors.

49.3%



Median Age	48
Average Household Income	\$241,994
Family Households	83.3%
Median Home Value	\$1,110,588

### ROSEVILLE

**68.6%** of people own their homes

Offers a variety of shopping, restaurants, golf courses, and a water park for all ages! With many highly ranked schools and a low crime rate, it is a great place for families to live. There are plenty of schools in the area as well as sports and many group activities to participate in. Tech giants, HP and Oracle are major employment contributors here.



Median Age	39
Average Household Income	\$141,123
Family Households	70.2%
Median Home Value	\$632,461

### ROCKLIN

**68.5%** of people own their homes

Located in South Placer County and is characterized by rolling hill terrain with 360-degree panoramic views of the Sierra Nevada mountains. A preferred location to live, work, visit, and grow business because of its convenient location, excellent schools and universities, abundant recreational opportunities, and the highest commitment to public safety.



Median Age	38
Average Household Income	\$151,409
Family Households	72.4%
Median Home Value	\$674,911

# SAY WHAT?

## SACRAMENTO STATS & RANKINGS

### SACRAMENTO IS AMERICA'S FARM-TO-FORK CAPITAL

We're known as America's Farm-to-Fork Capital. Our produce is shipped all over the United States year-round and we have around 40 farmers' markets. September is devoted to farm-to-fork events and restaurants, culminating in a large gala dinner on the famous Tower Bridge (the event is simply called the "Tower Bridge Dinner").

### 269 SUNNY DAYS PER YEAR

Welcome to sunny California! Sacramento's mild weather makes it attractive among U.S. cities. Each year it gets about 20 inches of rain, compared to U.S. average of 38. The hottest month is July.

SOURCE: [BestPlaces.net](http://BestPlaces.net)

### 80% OF THE WORLD'S ALMONDS ARE PRODUCED IN SACRAMENTO



Sacramento is America's Farm-to-Fork capital, growing more than 129 different crops in our area.



### SACRAMENTO WAS THE NO.1 METROPOLITAN AREA IN THE COUNTRY FOR PEOPLE RELOCATING FROM OTHER AREAS.

SOURCE: [Redfin News](http://Redfin News)

### HOME TO SACRAMENTO KINGS & RIVER CATS

Sacramento is home to 32 museums, so you can definitely find one that fits your taste. A local fave is the California State Railroad Museum which has 225,000 square feet of exhibit space.

### THE ONLY CITY IN THE WORLD WITH MORE TREES PER CAPITA THAN SACRAMENTO IS PARIS, FRANCE.

Sacramento is a city known by many names, including City of Trees, The Camellia Capital, the Big Tomato, The River City, Sac, or Sactown,

# NEW HOMES

## OUR FAVORITE HOME BUILDERS IN SACRAMENTO

Are you thinking about purchasing a new home construction from one of the builders in the area? Make sure your Realtor is with you when you first tour the community!

While there are plenty of benefits of buying a new home, we suggest working with a Realtor so that you have someone in your corner looking out for your best interests.

You're probably thinking, "Why on earth would I need a real estate agent if I'm buying new construction?"

Well, from choosing floor plans to the color paint or attending inspections and walk-throughs with you, a Realtor can negotiate on your behalf and make sure that you're getting what you ask for in your new home.

In some cases, your Realtor can save you thousands of dollars by representing you in a new home purchase. Here are some of our team's favorite home builders in the Sacramento area:



### TOLL BROTHERS

With 50+ years of experience building luxury homes, Toll Brothers holds a prominent place in the industry with seasoned leadership and strong trade partners. 2021 marked the 10th year Toll Brothers has been named to FORTUNE magazine's World's Most Admired Companies® list.\* Their impeccable standards are reflected in every home they build.

[www.tollbrothers.com](http://www.tollbrothers.com)



### TIM LEWIS

From lot selection to final walk-through, Tim Lewis prides itself on providing exceptional service to home buyers. With several beautiful communities to choose from in the Sacramento area, ranging from Rocklin to Elk Grove, Tim Lewis homes offer a variety of floor plans and quality design options.

[www.timlewis.com](http://www.timlewis.com)



### RISEWELL HOMES

Risewell Homes was born from the trusted legacies of two nationally recognized homebuilders, combining over 35 years of experience. As a Top 25 U.S. Homebuilder, they bring national reach and local expertise to every community they build. They have communities in Elk Grove, Roseville, Natomas and across the Sacramento area.

[www.risewellhomes.com](http://www.risewellhomes.com)



### JMC HOMES

Family-owned by Roseville natives, John Mourier Construction Homes are built with your family in mind. Some of its notable features are larger family gathering spaces, larger windows for natural light, guest suites and extra storage. They have communities in Roseville, Rocklin, and in Lincoln.

[www.jmchomes.com](http://www.jmchomes.com)

# PUBLIC ELEMENTARY SCHOOLS

Best Public Elementary Schools in the Sacramento Area from  
Niche.com & GreatSchools.org.

School	# of Students	School District
<b>RIVERVIEW STEM ELEMENTARY</b> 10700 Ambassador Dr. Rancho Cordova, CA 95670 (916) 294-2435   <a href="http://rsa.fcusd.org">rsa.fcusd.org</a>	346	<b>Folsom-Cordova</b> Student-Teacher Ratio 22:1
<b>SANDRA J. GALLARDO ELEMENTARY</b> 775 Russi Rd. Folsom, CA 95630 (916) 294-9170   <a href="http://fcusd.org/sge">fcusd.org/sge</a>	515	<b>Folsom-Cordova</b> Student-Teacher Ratio 21:1
<b>RUSSELL RANCH ELEMENTARY</b> 375 Dry Creek Rd. Folsom, CA 95630 (916) 294-2430   <a href="http://rre.fcusd.org">rre.fcusd.org</a>	609	<b>Folsom-Cordova</b> Student-Teacher Ratio 21:1
<b>EMPIRE OAKS ELEMENTARY</b> 1830 Bonhill Dr. Folsom, CA 95630 (916) 294-9130   <a href="http://eoe.fcusd.org">eoe.fcusd.org</a>	409	<b>Folsom-Cordova</b> Student-Teacher Ratio 23:1
<b>MANGINI RANCH ELEMENTARY</b> 4640 Sparrow Dr. Folsom, CA 95630 (916) 294-2460   <a href="http://mre.fcusd.org">mre.fcusd.org</a>	656	<b>Folsom-Cordova</b> Student -Teacher Ratio 23:1
<b>CARL H. SUNDAHL ELEMENTARY</b> 9932 Inwood Rd Folsom, CA 95630 (916) 294-2425   <a href="http://cse.fcusd.org">cse.fcusd.org</a>	382	<b>Folsom-Cordova</b> Student-Teacher Ratio 20:1



School	# of Students	School District	Student-Teacher Ratio
<b>FOLSOM HILLS ELEMENTARY</b> 106 Manseau Dr. Folsom, CA 95630 (916) 294-9135   <a href="http://fhe.fcusd.org">fhe.fcusd.org</a>	473	<b>Folsom-Cordova</b>	23:1
<b>OAK CHAN ELEMENTARY</b> 101 Prewett Dr. Folsom, CA 95630 (916) 294-9155   <a href="http://oce.fcusd.org">oce.fcusd.org</a>	444	<b>Folsom-Cordova</b>	21:1
<b>ELLIOTT RANCH ELEMENTARY</b> 10000 E Taron Dr. Elk Grove, CA 95757 (916) 683-3877   <a href="http://elliotttranch.egusd.net">elliotttranch.egusd.net</a>	548	<b>Elk Grove</b>	22:1
<b>ARNOLD ADREANI ELEMENTARY</b> 9927 Wildhawk W Dr Sacramento, CA 95829 (916) 525-0630   <a href="http://adreani.egusd.net">adreani.egusd.net</a>	901	<b>Elk Grove</b>	24:1
<b>NATOMA STATION ELEMENTARY</b> 500 Turnpike Dr Folsom, CA 95630 (916) 294-9145   <a href="https://nse.fcusd.org">https://nse.fcusd.org</a>	524	<b>Folsom-Cordova</b>	22:1

# TOP SCHOOLS

# PUBLIC ELEMENTARY SCHOOLS

Best Public Elementary Schools in the Sacramento Area from  
Niche.com & GreatSchools.org.

School	# of Students	School District
<b>THEODORE JUDAH ELEMENTARY</b> 101 Dean Way Folsom, CA 95630 (916) 294-9175   <a href="http://tje.fcusd.org">tje.fcusd.org</a>	<b>626</b>	<b>Folsom- Cordova</b> Student-Teacher Ratio 22:1
<b>GREENHILLS ELEMENTARY</b> 8200 Greenhills Way Granite Bay, CA 95746 (916) 791-4230   <a href="http://greenhills.eurekausd.org">greenhills.eurekausd.org</a>	<b>507</b>	<b>Eureka Union</b> Student-Teacher Ratio 21:1
<b>JUNCTION ELEMENTARY</b> 2150 Ellison Drive Roseville, CA 95747 (916) 771-1860   <a href="http://junction.rcsdk8.org">junction.rcsdk8.org</a>	<b>648</b>	<b>Roseville City</b> Student-Teacher Ratio 25:1
<b>MARIA MONTESSORI CHARTER</b> 1850 Wildcat Boulevard Rocklin, CA, 95765 (916) 630-1510   <a href="http://www.mmcharter.org">www.mmcharter.org</a>	<b>260</b>	<b>Rocklin Unified</b> Student-Teacher Ratio 14:1
<b>DIAMOND CREEK ELEMENTARY</b> 3151 Hopscotch Way Roseville, CA, 95747 (916) 771-1760   <a href="http://diamondcreek.rcsdk8.org">diamondcreek.rcsdk8.org</a>	<b>716</b>	<b>Roseville City</b> Student -Teacher Ratio 23:1
<b>SIERRA ELEMENTARY</b> 6811 Camborne Way Rocklin, CA, 95677 (916) 788-7141   <a href="http://ses.rocklinusd.org">ses.rocklinusd.org</a>	<b>446</b>	<b>Rocklin Unified</b> Student-Teacher Ratio 22:1



School	# of Students	School District	Student-Teacher Ratio
<b>WILLIAM KASEBERG ELEMENTARY</b> 1040 Main Street Roseville, CA, 95678 (916) 771-1790   <a href="http://kaseberg.rcsdk8.org">kaseberg.rcsdk8.org</a>	<b>294</b>	<b>Roseville City</b>	<b>18:1</b>
<b>H. CLARKE POWERS ELEMENTARY</b> 3296 Humphrey Rd. Loomis, CA, 95650 (916) 652-2635   <a href="http://powers.loomis-usd.k12.ca.us">powers.loomis-usd.k12.ca.us</a>	<b>491</b>	<b>Loomis Union</b>	<b>20:1</b>
<b>OAKHILLS ELEMENTARY</b> 9233 Twin School Rd. Granite Bay, CA, 95746 (916) 791-5391   <a href="http://oakhills.eurekausd.org">oakhills.eurekausd.org</a>	<b>518</b>	<b>Eureka Union</b>	<b>21:1</b>

# TOP SCHOOLS

# PUBLIC MIDDLE SCHOOLS

School	# of Students	School District	Student-Teacher Ratio
<b>FOLSOM MIDDLE SCHOOL</b> 500 Blue Ravine Rd. Folsom, CA 95630 (916) 983-4466   <a href="https://fcsd.org/fms">fcsd.org/fms</a>	1,403	Folsom-Cordova	26:1
<b>ELIZABETH PINKERTON MIDDLE SCHOOL</b> 8365 Whitelock Pkwy. Elk Grove, CA 95757 (916) 683-7680   <a href="https://epms.egusd.net">epms.egusd.net</a>	1,047	Elk Grove	22:1
<b>KATHERINE L. ALBIANI MIDDLE SCHOOL</b> 9140 Bradshaw Rd. Elk Grove, CA 95624 (916) 686-5210   <a href="https://kams.egusd.net">kams.egusd.net</a>	1,307	Elk Grove	21:1
<b>TOBY JOHNSON MIDDLE SCHOOL</b> 10099 Franklin High Rd. Elk Grove, CA 95757 (916) 714-8181   <a href="https://tjms.egusd.net">tjms.egusd.net</a>	1,335	Elk Grove	23:1
<b>WESTLAKE CHARTER SCHOOL</b> 2680 Mabry Dr. Sacramento, CA 95835 (916) 567-5760 <a href="https://westlakecharter.com">westlakecharter.com</a>	1,382	Natomas	22:1
<b>SUTTER MIDDLE SCHOOL</b> 715 Riley St. Folsom, CA 95630 (916) 294-9035   <a href="https://sms.fcusd.org">sms.fcusd.org</a>	1,628	Folsom-Cordova	25:1



# TOP SCHOOLS

# PUBLIC MIDDLE SCHOOLS

School	# of Students	School District	Student-Teacher Ratio
<b>LOOMIS BASIN CHARTER SCHOOL</b> 5438 Laird Rd. Loomis, CA, 95650 (916) 652-2642   <a href="http://loomischarter.org">loomischarter.org</a>	498	Loomis Union	22:1
<b>WILLMA CAVITT JUNIOR HIGH SCHOOL</b> 7200 Fuller Drive Granite Bay, CA, 95746 (916) 791-4152   <a href="http://cavitt.eurekausd.org">cavitt.eurekausd.org</a>	360	Eureka Union	21:1
<b>OLYMPUS JUNIOR HIGH SCHOOL</b> 2625 La Croix Drive Roseville, CA, 95661 (916) 782-1667   <a href="http://olympus.eurekausd.org">olympus.eurekausd.org</a>	434	Eureka Union	25:1
<b>FRANKLIN ELEMENTARY SCHOOL</b> 7050 Franklin School Rd. Loomis, CA, 95650 (916) 652-1818   <a href="http://franklin.loomis-usd.k12.ca.us">franklin.loomis-usd.k12.ca.us</a>	472	Loomis Union	22:1
<b>PLACER ELEMENTARY SCHOOL</b> 8650 Horseshoe Bar Rd. Loomis, CA, 95650 (916) 652-1830   <a href="http://placer.loomis-usd.k12.ca.us">placer.loomis-usd.k12.ca.us</a>	523	Loomis Union	24:1
<b>SPRING VIEW MIDDLE SCHOOL</b> 5040 5th Street Rocklin, CA, 95677 (916) 624-3381   <a href="http://svms.rocklinusd.org">svms.rocklinusd.org</a>	773	Rocklin Unified	21:1



# TOP SCHOOLS

# PUBLIC HIGH SCHOOLS

School	# of Students	School District	Student-Teacher Ratio
DAVIS SENIOR HIGH 315 W. 14th St. Davis, CA 95616 (530) 757-5400 <a href="http://dshs.djUSD.net">dshs.djUSD.net</a>	1,789	Davis Joint	22:1  <i>Graduation Rate: 95%   Average SAT: 1360   Average ACT: 31</i>
GRANITE BAY HIGH SCHOOL 31 Grizzly Way Granite Bay, CA 95746 (916) 786-8676 <a href="http://rjhsd.us/granitebay">rjhsd.us/granitebay</a>	2,050	Davis Joint	23:1  <i>Graduation Rate: 96%   Average SAT: 1320   Average ACT: 30</i>
FOLSOM HIGH SCHOOL 1655 Iron Point Rd. Folsom, CA 95630 (916) 294-2400 <a href="http://fcusd.org/fhs">fcusd.org/fhs</a>	2,806	Folsom-Cordova	25:1  <i>Graduation Rate: 96%   Average SAT: 1330   Average ACT: 29</i>
OAK RIDGE HIGH SCHOOL 1120 Harvard Way El Dorado Hills, CA 95762 (916) 933-6980 <a href="http://orhs.eduhsd.k12.ca.us">orhs.eduhsd.k12.ca.us</a>	2,375	El Dorado Union	24:1  <i>Graduation Rate: 97%   Average SAT: 1290   Average ACT: 29</i>
WHITNEY HIGH SCHOOL 701 Wildcat Blvd. Rocklin, CA 95765 (916) 632-6500 <a href="http://whs.rocklinusd.org">whs.rocklinusd.org</a>	21,981	Rocklin	22:1  <i>Graduation Rate: 97%   Average SAT: 1260   Average ACT: 28</i>
WEST CAMPUS 5022 58th St. Sacramento, CA 95820 (916) 395-5170 <a href="http://westcampus.scusd.edu">westcampus.scusd.edu</a>	881	Sacramento City	28:1  <i>Graduation Rate: 95%   Average SAT: 1220   Average ACT: 26</i>
ROCKLIN HIGH SCHOOL 5301 Victory Ln. Rocklin, CA 95765 (916) 632-1600 <a href="http://rhs.rocklinusd.org">rhs.rocklinusd.org</a>	2,025	Rocklin	23:1  <i>Graduation Rate: 96%   Average SAT: 1290   Average ACT: 27</i>

School	# of Students	School District	Student-Teacher Ratio
WESTERN SIERRA COLLEGIATE 660 Menlo Dr. Rocklin, CA 95765 (916) 778-4544 <a href="http://wsacademy.org">wsacademy.org</a>	770	Rocklin Academy	20:1  <i>Graduation Rate: 99%   Average SAT: 1270   Average ACT: 29</i>
DEL ORO HIGH 3301 Taylor Rd. Loomis, CA 95650 <a href="http://sites.google.com/puhsd.k12.ca.us/delorohigh/home?authuser=0">sites.google.com/puhsd.k12.ca.us/delorohigh/home?authuser=0</a>	1,622	Placer Union	24:1  <i>Graduation Rate: 99%   Average SAT: 1250   Average ACT: 28</i>
FRANKLIN HIGH 6400 Whitelock Pkwy Elk Grove, CA 95757 (916) 714-8150 <a href="http://frhs.egusd.net">frhs.egusd.net</a>	2,659	Elk Grove	24:1  <i>Graduation Rate: 99%   Average SAT: 1240   Average ACT: 28</i>
PLEASANT GROVE HIGH 9531 Bond Rd. Elk Grove, CA 95624 (916) 686-0230 <a href="http://pghs.egusd.net">pghs.egusd.net</a>	2,512	Elk Grove	23:1  <i>Graduation Rate: 96%   Average SAT: 1270   Average ACT: 28</i>
VISTA DEL LAGO 1970 Bird Stone Pkwy Folsom, CA 95630 (916) 294-2410 <a href="http://www.fcusd.org/vdlhs">www.fcusd.org/vdlhs</a>	1,750	Folsom-Cordova	24:1  <i>Graduation Rate: 99%   Average SAT: 1340   Average ACT: 29</i>
WOODCREEK HIGH 2551 Woodcreek Oaks Blvd. Roseville, CA 95747 (916) 771-6565 <a href="http://rjhsd.us/page/414">rjhsd.us/page/414</a>	1,902	Roseville Joint	22:1  <i>Graduation Rate: 95%   Average SAT: 1230   Average ACT: 26</i>
DA VINCI CHARTER 1400 E. Eighth St. Davis, CA 95616 (530) 757-7154 <a href="http://davincicharteracademy.net">davincicharteracademy.net</a>	582	Davis Joint	18:1  <i>Graduation Rate: 95%   Average SAT: 1300   Average ACT: 29</i>
BELLA VISTA 8301 Madison Ave. Fair Oaks, CA 95628 (916) 971-5052 <a href="http://sanjuan.edu/bellavista">sanjuan.edu/bellavista</a>	1,926	San Juan	24:1  <i>Graduation Rate: 90%   Average SAT: 1250   Average ACT: 28</i>

# TOP SCHOOLS

# PRIVATE SCHOOLS

## The Goddard School

251 Outcropping Way Folsom, CA  
3370 Zinfandel Drive. Rancho Cordova, CA  
2021 Wildcat Blvd. Rocklin, CA  
2081 Oak Meadow Drive, Roseville, CA  
[www.goddardschool.com](http://www.goddardschool.com)

With four locations to serve Sacramento families, The Goddard School offers private, play-based curriculum, educational daycare services, as well as enrichment programs for school-age children. With campuses in Folsom, Rancho Cordova, Roseville and Rocklin, their highly-trained educators deliver nurturing and encouraging care every step of the way. The school aims to help each child achieve important social and academic milestones. What's more, The Goddard School curriculum helps students become academically proficient and ready for the future.

## Sacramento Country Day School

2636 Latham Dr. Sacramento, CA  
[www.saccds.org](http://www.saccds.org)

Founded in 1964, Sacramento Country Day School is an private, college-preparatory school serving students in Kindergarten through grade 12. Known as one of Sacramento's finest private schools, their campus serves hundreds of students each school year. The school's mission is to challenge students to pursue academic and personal excellence. The school aims to develop and embrace every student's passion for learning. These objectives are met through a dynamic college preparatory program that fuels curiosity, instills confidence, and builds resilience. Students are challenged academically by engaging with conflicting points of view, making connections, and collaborating with others. Sacramento Country Day School provides students with the necessary skills to thrive in an evolving world.



## Sacramento Waldorf School

3750 Bannister Rd, Fair Oaks, CA 95628  
[www.sacwaldorf.org](http://www.sacwaldorf.org)

Sacramento Waldorf School provides more than just education to the children in Kindergarten through 12th grade who enroll there. Their 22-acre Fair Oaks campus provides a safe place to discover the self, build courage to communicate articulately and confidently, and develop a true love of learning that carries students through life with wonder and curiosity. Established in 1959, Sacramento Waldorf School is one of the oldest and largest Waldorf schools in North America and the only AWSNA-accredited high school locally.

## St. Charles Borromeo Catholic School

7580 Center Parkway Sacramento, CA  
[www.scb.school](http://www.scb.school)

Established in 1960, St. Charles Borromeo School is an active learning community tucked away in the heart of Center Parkway, Sacramento. The school serves students from pre-kindergarten through 8th grade. The campus prides itself on its warm, welcoming community of dedicated, talented faculty, and bright, enthusiastic children. St. Charles Borromeo School is a place where children grow as students with the support of parents, faculty, and staff. Their traditions are grounded in spirituality and their mission is to affirm the fundamental dignity of all people through enthusiasm for solid, challenging academics.

## Merryhill Private School

14 Locations in the Greater Sacramento Area  
[www.merryhillschool.com](http://www.merryhillschool.com)

Merryhill Schools are one of the largest private educational institutions in the Sacramento region. With 14 local campuses, their locations can be found in Natomas, Elk Grove, Roseville, Rocklin and Davis. Merryhill teachers engage and challenge each student in a warm and nurturing learning community. They combine a rigorous, standards-based curriculum with experiences that develop creativity, collaboration and communication. Additionally, they provide a technology-rich environment, including an iPad for each student in grades 4-8.

# TOP SCHOOLS

# PRIVATE SCHOOLS

## Jesuit High School

1200 Jacob Ln. Carmichael, CA 95608

[www.jesuithighschool.org](http://www.jesuithighschool.org)

Jesuit High School (JHS) is a Sacramento regional Catholic high school that provides young men with a life-building experience and delivers an academically rigorous college preparatory education to prepare graduates for lives of leadership and service. Founded in 1963, JHS currently has an enrollment of over 1070. The student body represents diversity in geography, ethnicity, religious affiliation, and socioeconomic background. JHS draws from more than 90 zip codes throughout the Greater Sacramento Area with 99 percent of graduates going on to college or university.

## St. Francis High School

5900 Elvas Ave. Sacramento, CA 95819

[www.stfrancishs.org](http://www.stfrancishs.org)

St. Francis prides itself on graduating young women who will change the world. Since their founding in 1940, they have encouraged the education of the whole person by providing high academic standards, a Christian environment for spiritual development, a full range of athletics, fine and performing arts, numerous on-campus clubs, and a variety of social activities. In most years 100% of its graduates attend college, 90% choosing four-year institutions.

## Shalom School

2320 Sierra Blvd, Sac, CA 95825

[www.shalomschool.org](http://www.shalomschool.org)

Shalom School's mission is to provide each child with an outstanding education in a nurturing environment that is academically excellent, inclusive, innovative, and inspired by Jewish values and traditions. As Sacramento's only Jewish community day school, they offer an excellent and nurturing education that serves the whole child and a rigorous academic curriculum.

## Bradshaw Christian School

8324 Bradshaw Rd. Sacramento, CA

[www.bradshawchristian.com](http://www.bradshawchristian.com)

Established in 1993, Bradshaw Christian School is the result of the vision and hard work of its dedicated founders. The school serves students from preschool through high school with an enrollment of 1,100 students. The campus is located on 50 country acres at the corner of Bradshaw and Calvine Roads in Sacramento, less than 1 mile from Elk Grove. The school places a strong emphasis on academics and character development and is dedicated to challenging young people through their educational endeavors. The school's programs focus on the development of the whole child by fostering intellectual, social and emotional growth.

## Camellia Waldorf School

57450 Pocket Rd. Sacramento

[www.camelliawaldorf.org](http://www.camelliawaldorf.org)

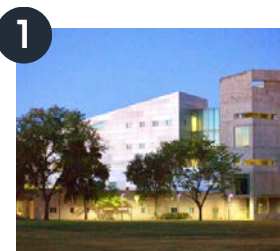
Located in Sacramento's Pocket neighborhood, Camellia Waldorf School was founded in 1989. The school educates elementary and middle-school students through 8th grade. They offer small class sizes, outstanding academic programs, outdoor education, music instruction, field trips, athletics, summer camps, and special events.

# TOP SCHOOLS

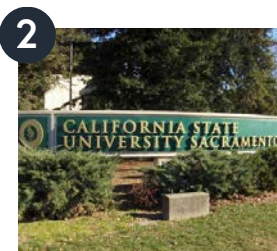
# 33.3% OF PEOPLE IN SACRAMENTO COUNTY HAVE A BACHELOR'S DEGREE OR HIGHER.

Greater Sacramento's comprehensive network of public and private universities and community and technical colleges fosters entrepreneurship, innovation and community-based learning.

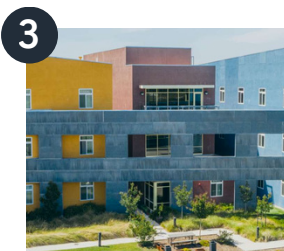
## COLLEGES & UNIVERSITIES



**UC DAVIS**  
UNIVERSITY OF CALIFORNIA  
Attendance: 31,797  
One Shields Ave. Davis, CA  
[ucdavis.edu](http://ucdavis.edu)  
Ranked #1 in the nation for veterinary medicine, agriculture & forestry



**SACRAMENTO STATE**  
Attendance: 28,268  
6000 J St. Sacramento, CA  
[csus.edu](http://csus.edu)  
Ranked #4 most diverse university in the western US



**JESSUP UNIVERSITY**  
Attendance: 1,056  
2121 University Ave. Rocklin, CA  
[jessup.edu](http://jessup.edu)  
Ranked #677 in Best Colleges in America



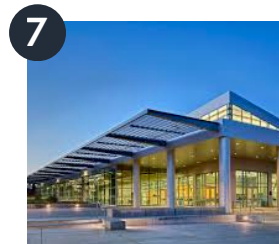
**FOLSOM LAKE COLLEGE**  
A LOS RIOS COLLEGE  
Attendance: 10,214  
10 College Parkway Folsom, CA  
[flc.losrios.edu](http://flc.losrios.edu)  
Ranked #56 in Best Community Colleges in California



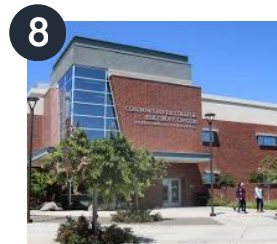
**SIERRA COLLEGE**  
Attendance: 17,420  
5100 Sierra College Blvd.  
Rocklin, CA  
[sierracollege.edu](http://sierracollege.edu)  
Ranked #49 in Best Community Colleges in California



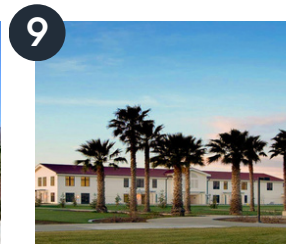
**SACRAMENTO CITY COLLEGE**  
EST. 1916  
Attendance: 19,031  
3835 Freeport Blvd. Sacramento, CA  
[scc.losrios.edu](http://scc.losrios.edu)  
Ranked #55 in Best Community Colleges in California



Attendance: 29,908  
[arc.losrios.edu](http://arc.losrios.edu)  
4700 College Oak Dr. Sacramento, CA  
Ranked #64 in Best Community Colleges in California



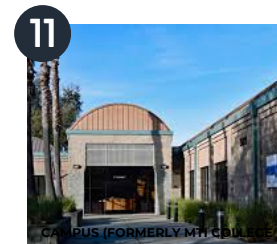
Attendance: 14,980  
8401 Center Pkwy. Sacramento, CA  
[crc.losrios.edu](http://crc.losrios.edu)



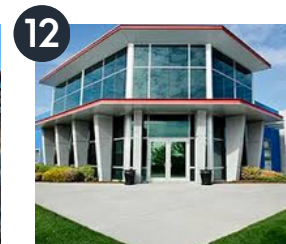
Attendance: 3,664  
2300 E Gibson Rd. Woodland, CA  
[wcc.yccd.edu](http://wcc.yccd.edu)  
Ranked #73 in Best Community Colleges in California



Attendance: 318  
1101 Investment Blvd. #200 El Dorado Hills, CA  
[sum.edu](http://sum.edu)  
Ranked #9 Best Colleges for Religious Studies in America



Attendance: 938  
5221 Madison Ave. Sacramento, CA  
[campus.edu](http://campus.edu)



Attendance: 1,107  
4100 Duckhorn Dr. Sacramento, CA  
[s.uti.edu/niche](http://s.uti.edu/niche)

# TOP SCHOOLS

## SACRAMENTO

### Tuesdays

#### FAIR OAKS

11549 Fair Oaks Blvd., Fair Oaks, CA  
Year Round from 9am-2pm

### Wednesdays

#### CAPITOL MALL

600 Capitol Mall Sacramento, CA  
May to Oct. from 9am-1:00pm

### Thursdays

#### SUTTER MEDICAL CENTER

2825 Capital Ave. Sacramento, CA  
Year Round from 2:30pm-5:30pm

#### FLORIN LIGHT RAIL STATION

3001 Florin Rd. Sacramento, CA  
Year Round from 8am-12pm

#### BODEGA DAYS AT CHAVEZ PLAZA

910 I St. Sacramento, CA  
May to Sept. from 10:30am - 1:30pm

### FRIDAYS

#### SIERRA FRESH FARMERS MARKET

Kaiser 2025 Morse Ave. Sacramento, CA  
Year Round from 9:30am-1:30pm



## ELK GROVE

### Saturdays

#### LAGUNA GATEWAY CENTER

8245 Laguna Blvd. Elk Grove, CA  
Year Round from 8am-12pm

### Saturdays

#### MIDTOWN SUTTER HEALTH

1050 20th St, Sacramento, CA 95811  
Year Round from 9am-1pm

#### OAK PARK

3500 5th Ave, Sacramento, CA 95817  
April to Nov. from 9am-1pm

#### COUNTRY CLUB PLAZA

El Camino St & Watt Ave.  
Year Round from 8am-12pm

#### NEIGHBORGOOD MARKET

400 Ball Park Dr, West Sacramento, CA  
Summer from 8am - 1pm

#### SUNRISE MALL

6041 Sunrise Blvd. Citrus Heights, CA  
Year Round from 8am - 1pm

### Sundays

#### SACRAMENTO CENTRAL

8th Street &, W St, Sacramento, CA  
Year Round from 8am-12pm



# LIFESTYLE

## DAILY FARMERS MARKET

## RANCHO CORDOVA

### Saturdays

#### RANCHO CORDOVA MARKET

11164 Folsom Blvd, Rancho Cordova, CA  
Year Round from 8am - 12pm

## DAVIS

### Wednesday & Saturdays

#### DAVIS MARKET

301 C St, Davis, CA  
Saturday: Year Round, 8am-1pm  
Wednesday: Picnic in the Park 4pm-8pm (May-Sept) & 3pm-6pm (Oct-April)

### Thursday

#### SUTTER DAVIS HOSPITAL

Sutter Davis Hospital, Davis, CA  
May - Sept from 10am -1pm

## FOLSOM

### Saturdays

#### HISTORIC FOLSOM PLAZA

915 Sutter St. Folsom, CA  
Year Round 8am-1pm



## ROSEVILLE

### Tuesday

#### FOUNTAINS

1198 Roseville Pkwy, Roseville, CA  
Year Round from 8:30am-1pm

### Friday

#### SUTTER MEDICAL CENTER

1 Medical Plaza Dr., Roseville, CA  
March-October from 10am-1pm

## EL DORADO HILLS

### Sundays

#### EDH TOWN CENTER

Town Center Blvd. El Dorado Hills, CA  
Year Round from 9am-2pm

## ROCKLIN

### Saturdays

#### BLUE OAKS FARMERS MARKET

6RC Willey Parking Lot. Rocklin  
June - October | Saturdays 8am-12pm



## Sacramento

### TRUITT BARK PARK

1818 Q St, Sacramento, CA

Truitt Dog Park features separate fenced-in parks for small and large dogs, lighting, trees, and public art. Open from sunrise to sunset, this park also includes a garden.

[cityofsacramento.org/ParksandRec/Parks/Park-Directory/Central-City/Brooks-Truitt-Park](http://cityofsacramento.org/ParksandRec/Parks/Park-Directory/Central-City/Brooks-Truitt-Park)

### THE LOCAL BARK PARK

4024 Power Inn Road, Sacramento, CA

Members-only playground for dogs, featuring a huge in-ground pool, a climbing and play structure, and sand digging pit.

[animaldenpetresort.com/thelocalbarkpark.com](http://animaldenpetresort.com/thelocalbarkpark.com) | \*See Website For Hrs.

## Cameron Park

### PAUL J. RYAN MEMORIAL PARK

3395 Hacienda Rd. Cameron Park, CA

Hacienda is the only off-leash dog park in Cameron Park. It offers a nice shaded walking trail among beautiful oak trees. There are designated areas for small and large dogs.

[cameronpark.org/paul-j-ryan-memorial-park-dog-park](http://cameronpark.org/paul-j-ryan-memorial-park-dog-park)

## Orangevale

### PECAN PARK

5945 Pecan Ave. Orangevale, CA

Hosting the first-ever dog park in Orangevale, which opened in 2017, Pecan Park is home to one of Sacramento's newest dog parks.

[ovparks.com/pecan-park](http://ovparks.com/pecan-park) | Open 7am-7pm

### HOWE DOG PARK

2201 Cottage Way Sacramento, CA

Howe Dog Park is the very first park constructed in the greater Sacramento region for dogs. A new, smaller-sized park has been added and dogs continue to enjoy the spacious running areas as they meet and greet fellow canines.

[fecrecpark.com](http://fecrecpark.com) | Open 9am-5pm



## Folsom

### FIDO FIELD DOG PARK

1775 Creekside Dr. Folsom, CA

The Fido Field is an off-leash dog park with distinct areas to separate large dogs from small dogs. It also provides ample seating and shade for the sports spectators.

[folsom.ca.us](http://folsom.ca.us) Open 7am-9pm, Closed Wednesdays

# LIFESTYLE

## DOG PARKS

## El Dorado Hills

### CSD COMMUNITY DOG PARK

1021 Harvard Way El Dorado Hills, CA

Located west of New York Creek in the wooded area alongside the athletic fields, the CSD Dog Park offers separate areas for large dogs and for small dogs and is fully accessible to people of all abilities.

[eldoradohillscsd.org](http://eldoradohillscsd.org) | Open 7am-9pm

## Fair Oaks

### PHOENIX DOG PARK

9050 Sunset Ave. Fair Oaks, CA

The Phoenix Dog Park has three fenced areas for small dogs, large dogs, and a special needs area for disabled, shy, and aggressive dogs.

There are also shade structures and benches for the comfort and convenience of patrons.

[forpd.org/222/Phoenix-Dog-Park](http://forpd.org/222/Phoenix-Dog-Park)

\*See Website For Hrs.

## Carmichael

### CARMICHAEL DOG PARK

5750 Grant Ave, Carmichael, CA

An off-leash dog park, Carmichael offers a special Canine Corral with small dog and large dog areas. Open daily from dawn to dark.

[carmichaelpark.com](http://carmichaelpark.com) | Open 6am-7pm

## Roseville

### SAUGSTAD OFF LEASH DOG PARK

100 Buljan Dr. Roseville, CA

The Saugstad Dog Park is a place that has truly gone to the doggoes! There is a large fenced area where your pooch can have the time of his life pawrtying with all of his puppy pals.

[roseville.ca.us](http://roseville.ca.us) | Open 6am-7pm

## Elk Grove

### ELK GROVE DOG PARK

9950 Elk Grove-Florin Rd. Elk Grove, CA

One of Elk Grove's finest parks, this one comes equipped with an aquatic center, baseball fields, a multi-use trail, a scenic lake for fishing and an off-leash dog park of course.

[ca-cosumnescsd.civicplus.com](http://ca-cosumnescsd.civicplus.com)

| Open Sunrise-1 hr. After Sunset

### LAGUNA COMMUNITY PARK

9014 Bruceville Rd. Elk Grove, CA

Very open and spacious and clean dog park tucked away behind the baseball fields. Lots of shade and benches here too!

[ca-cosumnescsd.civicplus.com](http://ca-cosumnescsd.civicplus.com)

| Open Sunrise-1 hr. After Sunset

### MORSE DOG PARK

5540 Bellaterra Dr, Elk Grove, CA

This dog park went under construction during the summer of 2019 and was re-launched in December 2019. Upgrades include an increased area for small dogs, shade additions to both large dog and small dog areas, 30 additional trees and added natural agility play elements.

[yourcsd.com/849/Morse-Park-Dog-Park](http://yourcsd.com/849/Morse-Park-Dog-Park) | Open Sunrise-1 hr. After Sunset

## Rocklin

### RRUFF OFF LEASH DOG PARK

5480 5th St. Rocklin, CA

This park has separate sections for small and large dogs. There is also a 30 x 60 fenced Special Needs Area for dogs/people with special needs, for service dog training, obedience training, rescue group adoption days, meetup groups, and more. Dogs can use the agility course, play in the kiddie pool, or just hang out.

[ruffhealingheroes.org](http://ruffhealingheroes.org)

Open Dawn-Dusk



## HIKING TRAILS

### COSUMNES RIVER PRESERVE

13501 Franklin Blvd. Galt, CA

The preserve, located along the Cosumnes River, has more than 11 miles of hiking trails. The riparian habitat has more than 250 types of birds, 40+ species of fish and many four-legged creatures. Along the one-mile Lost Slough Wetlands Walk you can sight birds and amphibians.

**(916) 684-2816 | [cosumnes.org](http://cosumnes.org)**

### JEDEDIAH SMITH MEMORIAL TRAIL DISCOVERY PARK

1000 Garden Hwy Sacramento, CA

Another easy, paved trail is the 32-mile Jedediah Smith Memorial Trail that runs along the American River Parkway. It is accessible from many county regional parks, including Discovery Park, Paradise Beach, Rossmoor Bar and William B. Pond and at several in Folsom as well. Jedediah Smith is a very popular trail for hikers, walkers, bicyclists and runners.

**(916) 875-7275 | [regionalparks.saccounty.net/Parks/Pages/JedediahSmith.aspx](http://regionalparks.saccounty.net/Parks/Pages/JedediahSmith.aspx)**

### DISCOVERY PARK

1000 Garden Hwy Sacramento, CA

A 302-acre park, Discovery features a 32-mile bike trail, ball fields, picnic sites, fishing and boat launches.

**(916) 875-7275 | [regionalparks.saccounty.net/Parks/Pages/DiscoveryPark.aspx](http://regionalparks.saccounty.net/Parks/Pages/DiscoveryPark.aspx)**

### SOUTH FORK AMERICAN RIVER TRAIL

780 Salmon Falls Rd. El Dorado Hills, CA

The South Fork American River Trail has numerous paths for hiking, biking and horseback riding along 25 miles of trails. With varying degrees of difficulty and inclines, this hike's scenery includes river views, chaparral canyons and rolling.

**(530) 621-1224 | [arconservancy.org](http://arconservancy.org)**

### JOHNNY CASH ART TRAIL

50 Natoma St. Folsom, CA

Folsom Lake provides 34 miles of biking trails for cyclists within their city, including a number of options around picturesque Folsom Lake. The Johnny Cash Art Trail hosts cycling events on its grounds and you can even gear up with Johnny Cash cycling clothes if you want to go in style.

**(916) 355-7304 | [folsomcasharttrail.com](http://folsomcasharttrail.com)**

### LAKE CLEMENTINE TRAIL

1¼ miles south of ASRA Park Headquarters Gate #139 in Auburn, CA

This easy trail is ideal for a panoramic hike along the North Fork American River, is pet-friendly, wheelchair accessible and great for kids. Much of it is in the shade of conifers and oaks. Several side trails lead down to the river, the last one descending to a deep pool beneath the cascading waters of the North Fork Dam.

**(530) 887-2111 | [visitplacer.com/discover/lake-clementine-trail/](http://visitplacer.com/discover/lake-clementine-trail/)**

# LIFESTYLE

## HIKING TRAILS, LAKES & THE GREAT OUTDOORS

### LAKES & RIVERS

#### FOLSOM LAKE & RECREATION AREA

7755 Folsom-Auburn Rd. Folsom, CA

Located at the base of the Sierra foothills, the lake and recreation area offers opportunities for hiking, biking, running, camping, picnicking, horseback riding, water-skiing and fishing. Throughout the year, Folsom Lake is used for boating, jet-skiing and much more. Entrances can be found in both Folsom and Granite Bay.  
**(916) 988-0205 | [parks.ca.gov/?page\\_id=500](http://parks.ca.gov/?page_id=500)**

#### NIMBUS FLAT & RECREATION AREA

1901 Hazel Ave. Gold River, CA

Popular beach area and scenic park with a stretch of riverfront facing the dam, un-motorized boat launch, adjacent to Sac State Aquatic Center and located along the American River Bike Trail.  
**(916) 988-0205 | <https://maps.app.goo.gl/2UxPYK9KnsnN93fJA>**

#### LAKE NATOMA

7806 Folsom Auburn Rd. Folsom, CA

This lake was created by Nimbus Dam across the American River. Facilities include one group campground, 11 miles of paved bicycle trails, 6 miles of multi-use trails and excellent year-round bank or boat fishing. Lake Natoma is an excellent facility for non-motorized boat recreation, though motorized boating is also allowed and there is a 5 mph speed limit on the entire lake. Good fishing for both cold and warm water species including rainbow trout, brown trout, black bass, crappie and bluegill.  
**(916) 988-0205 | [recreation.gov/camping/gateways/2280](http://recreation.gov/camping/gateways/2280)**

### DESTINATIONS & ACTIVITIES

#### SOUTH LAKE TAHOE

Lake Tahoe, CA

South Lake Tahoe's outdoor recreation and nightlife attract people from all over the world. Mix together world-class ski resorts, golf, hiking, beaches and mountain biking and you have a year-round recreation destination.

**[tahoeactivities.com/lake-tahoe-recreation/](http://tahoeactivities.com/lake-tahoe-recreation/)**

#### SAC AQUATIC CENTER

1901 Hazel Ave. Gold River, CA

Located on Lake Natoma, the Sacramento Aquatic Center offers a fun variety of water activities for the whole family including classes and rentals for water skiing, paddle boating, wind surfing and more!

**(916) 278-2842 | [sacstateaquaticcenter.com](http://sacstateaquaticcenter.com)**

#### QUARRY PARK ADVENTURES

5373 Pacific St. Rocklin, CA

Located in the 160-year-old Quarry District in downtown Rocklin, Quarry Park is a one-of-a-kind outdoor experience with zip lines, free-fall jumps, paddle boat rides, rock climbing and a kids adventure area, and much more.

**(916) 824-1680 | [quarrypark.com](http://quarrypark.com)**

#### WAKE ISLAND WATERPARK

7633 Locust Rd. Pleasant Grove, CA

West Coast's largest waterpark resort featuring cable (boatless) wakeboarding, "floating" obstacle courses, beach volleyball, pedal boats and a swimming beach. Wake Island is free to enter; activities prices vary.

**(916) 655 3900 | [wakeislandwaterpark.com](http://wakeislandwaterpark.com)**



# LIFESTYLE

## WINERIES & BREWERIES

### Sacramento

#### SCRIBNER BEND VINEYARDS

9051 River Rd. Sacramento, CA  
(916) 744-1803 | [scribnerbend.com](http://scribnerbend.com)

#### BAILARIN CELLARS

720 K Street Sacramento, CA  
(707) 200-7710 | [bailarincellars.com](http://bailarincellars.com)

#### BIKE DOG BREWING COMPANY

2568 Industrial Blvd. #110 West Sac, CA  
(916) 572-0788 | [bikedogbrewing.com](http://bikedogbrewing.com)

#### FIELDWORK BREWING CO.

1805 Capitol Ave. Sacramento, CA  
(916) 329-8367 | [fieldworkbrewing.com](http://fieldworkbrewing.com)

#### NEW GLORY CRAFT BREWERY

8251 Alpine Ave. Sacramento, CA  
(916) 451-9355 | [newglorybeer.com](http://newglorybeer.com)

#### MCCONNELL ESTATES WINERY

10686 W Stockton Blvd. Elk Grove, CA  
(916) 685-5368 | [mcconnellestates.com](http://mcconnellestates.com)

### Folsom

#### RED BUS BREWING COMPANY

802A Reading St. Unit A Folsom, CA  
(916) 467-7790 | [redbusbrew.com](http://redbusbrew.com)

#### OUT OF BOUNDS BREWING CO.

13407 Folsom Blvd. Suite D, Folsom, CA  
(916) 357-5250 | [outofboundsbrewing.com](http://outofboundsbrewing.com)

### Davis

#### GREAT BEAR VINEYARDS

24800 Co Rd 101A, Davis, CA  
(530) 574-1516 | [greatbearvineyards.com](http://greatbearvineyards.com)

### Placerville, Shingle Springs & Cameron Park

#### GOLD HILL VINEYARD & BREWERY

5660 Vineyard Ln, Placerville, CA  
(530) 626-6522 | [goldhillvineyard.com](http://goldhillvineyard.com)

#### BOEGER WINERY

17096 Carson Rd. Placerville, CA  
(530) 378-9406 | [boegerwinery.com](http://boegerwinery.com)

#### DAVID GIRARD VINEYARDS

741 Cold Springs Rd. Placerville, CA  
(530) 295-1833 | [davidgirardvineyards.com](http://davidgirardvineyards.com)

#### CIELO ESTATES

3040 Ponderosa Rd. Shingle Springs, CA  
(530) 672-8575 | [cieloestate.com](http://cieloestate.com)

#### MOONRAKER MILLHOUSE BREWRY

3501 Robin Ln. Cameron Park, CA  
(530) 745-6816 | [moonrakerbrewing.com/millhouse](http://moonrakerbrewing.com/millhouse)

#### MOIRAE BREWING COMPANY

2650 Cameron Park Dr, CA  
(530) 359-8820 | [moiraebrewing.com](http://moiraebrewing.com)

#### EDIO VINEYARDS/DELFINO FARMS

3205 N Canyon Rd Bldg 1, Camino, CA  
(530) 622-0184 | [delfinofarms.com](http://delfinofarms.com)

### Plymouth

#### AMADOR CELLARS

11093 Shenandoah Rd. Plymouth, CA  
(209) 245-6150 | [amadorcellars.com](http://amadorcellars.com)

#### WILDEROTTER VINEYARD

19890 Shenandoah School Rd.  
Plymouth, CA  
(209) 245-6016 | [wilderottvineyard.com](http://wilderottvineyard.com)

#### BORJÓN WINERY

11270 Shenandoah Rd. Plymouth, CA  
(209) 245-3087 | [borjonwinery.com](http://borjonwinery.com)

#### AMADOR BREWING COMPANY

9659 Main St Plymouth, CA  
(209) 507-1900 | [amadorbrewing.com](http://amadorbrewing.com)



#### DILLIAN WINES

12138 Steiner Rd. Plymouth, CA  
(209) 245-3444 | [dillianwines.com](http://dillianwines.com)

#### HELWIG VINEYARDS & WINERY

11555 Shenandoah Rd, Plymouth, CA  
(209) 245-5200 | [helwigwinery.com](http://helwigwinery.com)

#### SERA FINA CELLARS

17000 Latrobe Rd. Plymouth CA  
(209) 245-4300 | [serafinacellars.com](http://serafinacellars.com)

### Rancho Cordova

#### CLAIMSTAKE BREWING COMPANY

11366 Monier Park Pl. Rancho Cordova, CA  
(916) 661-5249 | [claimstakebrewing.com](http://claimstakebrewing.com)

### Auburn

#### MOONRAKER BREWING COMPANY

12970 Earhart Ave. #100 Auburn, CA  
(530) 745-6816 | [moonrakerbrewing.com](http://moonrakerbrewing.com)

#### KNEE DEEP

13395 New Airport Rd. H Auburn, CA  
(530) 797-HOPS | [kneedeepbrewing.com](http://kneedeepbrewing.com)

#### LONE BUFFALO VINEYARDS

7505 Wise Rd. Auburn, CA  
(916) 823-1159 | [lonebuffalovineyards.com](http://lonebuffalovineyards.com)

#### VINA CASTELLANO

4590 Bell Rd, Auburn, CA 95602  
(530) 889-2855 | [vinacastellano.com](http://vinacastellano.com)

#### TROUBLEMAKERS BEER GARDEN

7221 Coloma Rd. Lotus, CA  
(530) 663-8723 | [troublemakersbeergarden.com](http://troublemakersbeergarden.com)



## SHERRI PATTERSON

 **BROKER ASSOCIATE  
& OWNER**

DRE# 01273462 | Email: sherri@sherripatterson.net  
Phone: 916-801-1105



With more than 25 years of experience, Sherri Patterson is a highly respected Broker Associate serving the Greater Sacramento region. Sherri leads The Sherri Patterson Team, recently recognized as Outstanding Small Team by Real Producers. Known for white-glove service and deep local expertise, Sherri specializes in helping physicians and medical professionals relocate seamlessly to the area.

A Lifetime Member of the Sacramento Association of Realtors Master's Club, Sherri holds prestigious designations including CFSP, CLHMS, GUILD recognition for Luxury Sales, and is a designated DRS Agent. She is trusted for her discretion, advocacy and precision in high-stakes transactions.

Sherri and her team deliver concierge-level relocation support, coordinating community tours, virtual walkthroughs, home previews and every step of the transaction with proactive communication. For busy medical families, they act as trusted partners on the ground, ensuring every detail is handled with care.

Outside of real estate, Sherri enjoys spending time with family, paddleboarding on Folsom Lake, exploring Lake Tahoe in her Jeep, traveling and adventuring outdoors with her sweet pup, Lili.

## MARY HILLYER

 **DIRECTOR OF OPERATIONS**

Email: ops@sherripatterson.net  
Phone: 530-870-0015



As Director of Operations for The Sherri Patterson Team, Mary Hillyer drives the systems and structure that keep the organization running seamlessly. She oversees daily operations, administrative leadership, hiring, training, marketing, community tour coordination and agent support, ensuring every experience reflects the team's high standards of care and service.

Known for her detail-driven, solutions-oriented approach, Mary anticipates needs and streamlines processes behind the scenes so the sales team can focus fully on clients. She brings a calm, organized presence to a fast-paced environment and takes pride in building systems that support both people and performance.

Mary splits her time between Sacramento and Boise, ID with her husband, their two adult children and their two huskies. Family is at the center of everything she does, and she values balancing a strong professional role with a connected life at home.

## FRAN CAMMAROTA

 **BROKER ASSOCIATE,  
MBA**

DRE# 01052954 | Email: Fran@francammarota.com  
Phone: 916-367-2773



Fran Cammarota has been a trusted local real estate advisor since 1989. As a lifelong resident of Sacramento, he grew up in Fair Oaks and graduated from Jesuit High School, Thomas Aquinas College, and California State University Sacramento where he received an MBA in Finance. He is a third-generation real estate agent, a Lifetime Master's Club Member, and earned his broker's license in 1992. If you are Fran's client, you can expect a full-service experience with your success at the center. Fran's perfect weekend would be a trip with his wife to Vegas or spending time with the whole family in Lake Tahoe, or Disneyland!

# OUR TEAM



## ALYSSA TEYLER

 **CFSP** REALTOR

DRE# 02061580 | Email: [alyssa@sherripatterson.net](mailto:alyssa@sherripatterson.net)  
Phone: 619-988-6229

With 10 years of luxury hospitality management, Alyssa Teyler is the real estate expert clients trust for the highest level of service and success. After receiving her license in 2018, Alyssa joined the award-winning Sherri Patterson Team. In addition to quickly being ranked in the top 20% of agents at her first brokerage, she has also earned her CLHMS designation and GUILD recognition as a Luxury Agent, DRS agent designation and is a realtor partner of the Teacher Next Door and Fire Fighter Next Door Programs. Alyssa's goal is to provide an elevated level of service by putting her clients first and doing what it takes to ensure they enjoy their journey to homeownership. As her client, you will have peace of mind knowing that she is an expert negotiator with thorough attention to detail, especially when it comes to contracts. She will deliver the best real estate experience with knowledgeable communication and flexibility around your schedule, to ensure that you remain confident and informed. When not serving her clients, Alyssa enjoys spending quality time with her family. If you're lucky, she might bake you some of her amazing cookies or share the adventures of the farm animals around their property. She also loves wine tasting in Shenandoah Valley and exploring outdoor activities around Folsom Lake.



## ANIKA HAUX

 **CLIENT EXPERIENCE  
SPECIALIST**

Email: [marketing@sherripatterson.net](mailto:marketing@sherripatterson.net)

As our Client Care Specialist, Anika is passionate about creating meaningful connections and memorable experiences. A proud El Dorado County native, she enjoys sharing her love for the region and all that it has to offer. With her warm personality and commitment to excellence, Anika ensures every interaction is positive, seamless, and filled with joy. When she's not at work, she loves spending time at the lake, being a devoted dog-mom, and traveling to tropical destinations to scuba dive and soak up the sun.

## PORTIA HIGH

 **CFSP** REALTOR

DRE# 02143926 | Email: [portia@sherripatterson.net](mailto:portia@sherripatterson.net)  
Phone: 916-820-6277



With a passion to serve others, Portia is the real estate expert clients trust for unparalleled dedication and success. After earning her Bachelor's Degree from California State University, Chico, Portia built a career spanning over 20 years in both the public and private sectors. With a deep understanding of the market, exceptional communication, and expert negotiation skills, she provides her clients with the highest level of service. Having been a resident of Sacramento for 13 years, she brings invaluable local expertise to every real estate transaction.

Portia's goal is to guide her clients through every step of the home buying or selling process, ensuring they have a clear understanding and feel supported. As her client, you will benefit from her thorough attention to detail and unwavering dedication to achieving your real estate goals. Her commitment to transparency and a client-first approach guarantees that your needs remain her top priority.

Passionate about giving back, Portia is committed to charitable work and community service. She proudly serves as a Board Member of her local Optimist club, helping to provide educational scholarships that empower foster teens to pursue their goals. Additionally, she volunteers with the National Marrow Donor Program (NMDP), helping to register potential marrow or stem cell donors who could be life-saving matches for patients in need. When not serving her clients, Portia enjoys traveling with her two daughters, spending quality time with friends and family, and walking her dog, Macy.

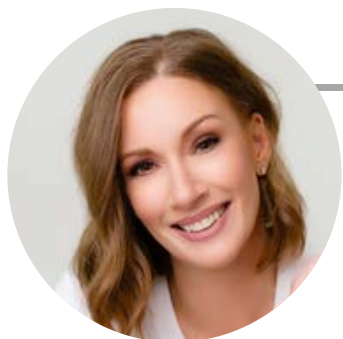


## JEROME EDILLOR

### EXECUTIVE ASSISTANT

Email: [team@sherripatterson.net](mailto:team@sherripatterson.net)

Jerome Edillor is an experienced Executive Virtual Assistant with over five years of supporting entrepreneurs, real estate professionals, and creative teams in fast-paced environments. With a background in administrative management and client relations, he helps streamline operations so his clients can focus on growth and productivity. Jerome is known for his reliability, organization, and proactive approach. Outside of work, Jerome enjoys biking, relaxing at the beach, and spending time with his cats.



## ELLIE KRISTOFF-MORSE

### TRANSACTION COORDINATOR

Email: [ellie@partnersprocessing.com](mailto:ellie@partnersprocessing.com)

Ellie Kristoff-Morse is the creator and owner of Partners Processing, Inc. and has partnered with the Sherri Patterson Team for more than seven years. Ellie is passionate about real estate and is extremely detailed, organized and trustworthy, which has led to her building a successful referral-based business over the last 13 years.

## KAT WELLS

### MARKETING DIRECTOR

Email: [kat@copykatconsulting.com](mailto:kat@copykatconsulting.com)  
Phone: 951-294-8110 | [copykatconsulting.com](http://copykatconsulting.com)



Kat Wells has a bachelor's degree in Journalism and 13 years of digital marketing experience—leading and executing successful content marketing strategies for real estate teams. Her passion is to help business owners share their personality, creativity and big ideas with the world. She joined the Sherri Patterson Team in 2017 to help take their marketing and client experience to the next level. In her free time, Kat enjoys camping, hiking and fishing in Northern Arizona, where she lives with her husband, three sons and two dogs.



SHERRI PATTERSON TEAM

916.801.1105

[sherripatterson.net](http://sherripatterson.net)