

DOOR SCHEDULE					
SYMBOL	WIDTH	HEIGHT	HEADER	NOTES	QUANTITY
①	3'-0"	6'-8"	(2)2"X8"	INSULATED DOOR	1
②	2'-8"	6'-8"	(2)2"X8"	INSULATED DOOR FULL LITE W/ GRIDS	1
③	3'-0"	6'-8"	(2)2"X8"	20 MIN. INSULATED DOOR	1
④	3'-0"	6'-8"		INTERIOR DOOR	4
⑤	2'-8"	6'-8"		INTERIOR DOOR	3
⑥	2'-4"	6'-8"		INTERIOR DOOR	1
⑦	3'-0"	6'-8"		BARN DOOR	1
⑧	2'-8"	6'-8"		POCKET DOOR	1
⑨	PR-3'-0"	6'-8"		BI-PASS DOOR	2
⑩	PR-2'-6"	6'-8"	(2)2"X10"	SLIDING GLASS PATIO DOOR	1
⑪	1'-6'-0"	8'-0"	(2)11-7/8"LVLS	OVERHEAD DOOR	1
⑫	3'-0"	6'-8"	(2)2"X8"	INSULATED DOOR HALF LIGHT	1

## GENERAL NOTES:

EXTERIOR DOORS: 1-3/4" INSULATED PRE-HUNG VINYL CLAD or WD (PRE-BORED FOR LOCKS & DEADBOLT)

INTERIOR DOORS: 1-3/8" PRE-HUNG HOLLOW CORE WOOD. LEVER-TYPE LOCKSETS, DOORS & HARDWARE AS APPROVED BY OWNER.

OVERHEAD DOOR: 1-3/4" INSUL. ROLL-TYPE DOORS w/TRACK, GUIDES, AUTO OPEN & LOCKS. EXTERIOR WINDOWS: INSULATING VINYL, LOW "E" GLAZING, U-VALUE CERTIFIED.

CLOSETS: 1-1 1/2" PAINTED SHELF, 1- METAL POLE, SHELF @ 68" A.F.F. CONFIGURATION BY CONTRACTOR.

BATH: LAVATORY SINK BASIN, T.P. HOLDER, ROBE HOOK ON DOOR (PRIMARY), TOWEL BARS (1-24", 1-36").

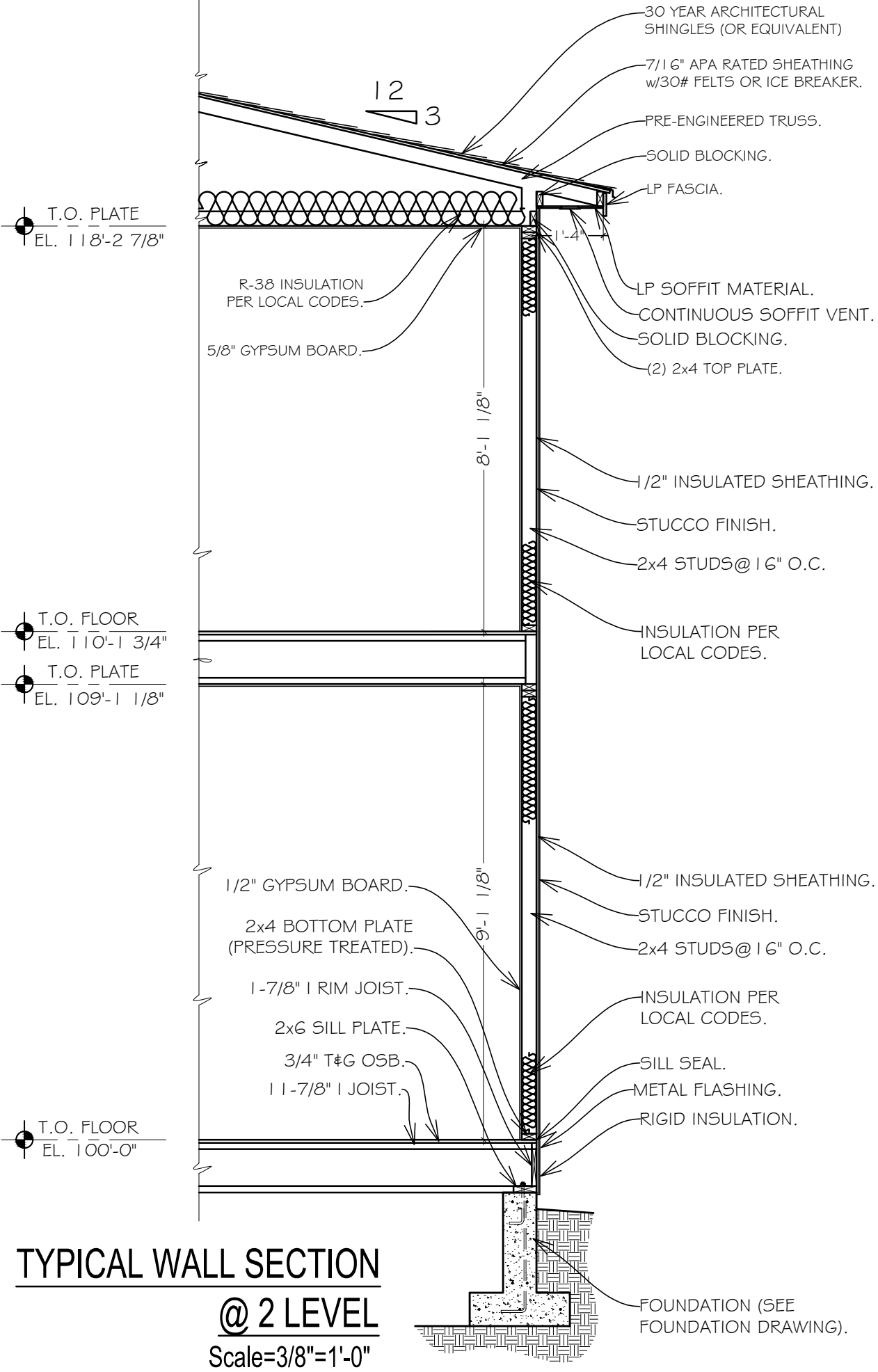
KITCHEN & BATH CABINET & CTR. TOP DESIGN BY OTHERS. EXTERIOR FINISH as NOTED ON PLAN, DRYWALL INTERIOR FINISH MOISTURE-RESISTANT DRYWALL "GREENBOARD" IN BATHS & SINK. PROVIDE GUTTER & DOWNSPOUT SYSTEM TO PROVIDE POSITIVE DRAINAGE AWAY FROM STRUCTURE. DO NOT SCALE DRAWINGS. DIMENSIONS TAKE PRECEDENCE OVER SCALE; LARGER SCALE OVER SMALLER SCALE. & DETAILS OVER NOTES. GEN'L CONTRACTOR & SUB-CONTRACTORS SHALL VERIFY DRAWINGS & SITE CONDITIONS BEFORE COMMENCEMENT OF THE WORK. ANY DISCREPANCY IN THE DRAWINGS OR DOCUMENTS SHALL BE BROUGHT TO THE ATTENTION OF THE ARCHITECT/ENGINEER PRIOR TO COMMENCEMENT OF THE WORK. ALL WORK SHALL COMPLY WITH THE MOST CURRENT ADOPTED I.R.C., STATE ENERGY CODE, & LOCAL BLDG. DEPT. REQMTs. PRE-MANUFACTURED FLR. & ROOF TRUSSES AS APPROVED BY THE ARCHITECT/ENGINEER. ATTIC SPACE VENTILATION PER I.R.C. R806.

## ELECTRICAL NOTES:

ELECTRICAL CONTRACTOR TO SUPPLY ALL LABOR & MATERIAL TO PERFORM THE WORK PER APPLICABLE GOVERNING CODE (NEC & LOCAL). THE WORK SHALL INCLUDE: FANLITES, SWITCHES, MOTORS, RECESSED LIGHTS, SMOKE & CO2 ALARMS, OUTLETS, PANELS, BREAKERS, POWER & LIGHTING. OWNER SELECTION OF FINISHES (COLOR & TYPE) BEFORE INSTALLATION.

## MECHANICAL:

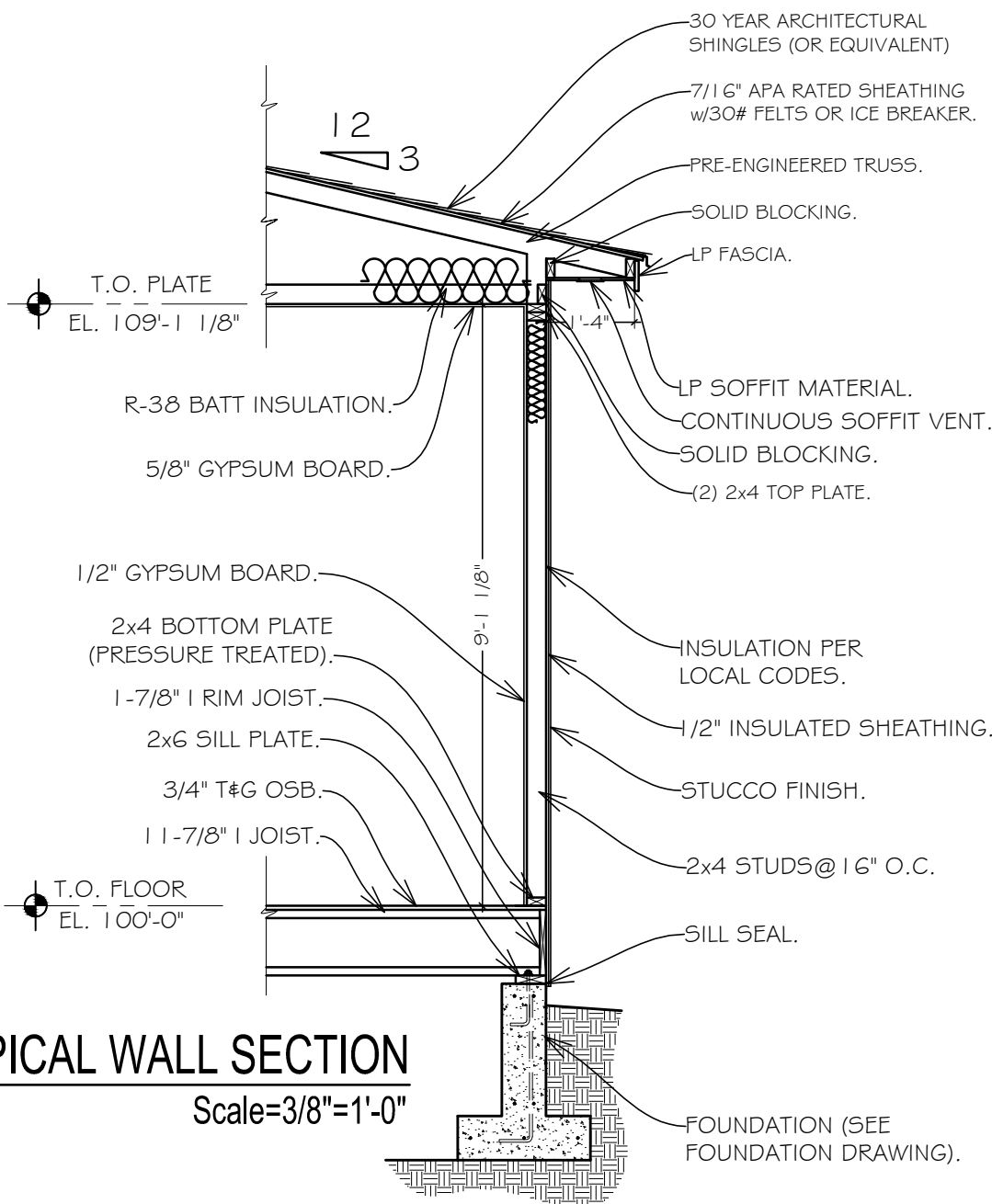
MECHANICAL CONTRACTOR TO SUPPLY ALL LABOR & MATERIAL TO PERFORM THE WORK PER APPLICABLE GOVERNING CODES (UMC, UPC, & LOCAL). GOVERNING CODE (UMC, UPC, & LOCAL). THE WORK INCLUDES: 50 GALLON GAS-FIRED WTR. HTR. AIR-CONDITIONING, VENTING, MAKE-UP AIR FOR EXHAUST FANS, WATER CLOSETS, TUB & ENCLOSURE, SHOWER, SHOWER PAN OR ENCLOSURE & LAVs. FORCED-AIR HEAT SYSTEM & FURNACE STAINLESS STEEL DOUBLE SINK w/GARBAGE DISPOSAL, ICE-MAKING CONNECTION (FOR REFRIGERATOR), UNDER-COUNTER DISHWASHER.



### TYPICAL WALL SECTION

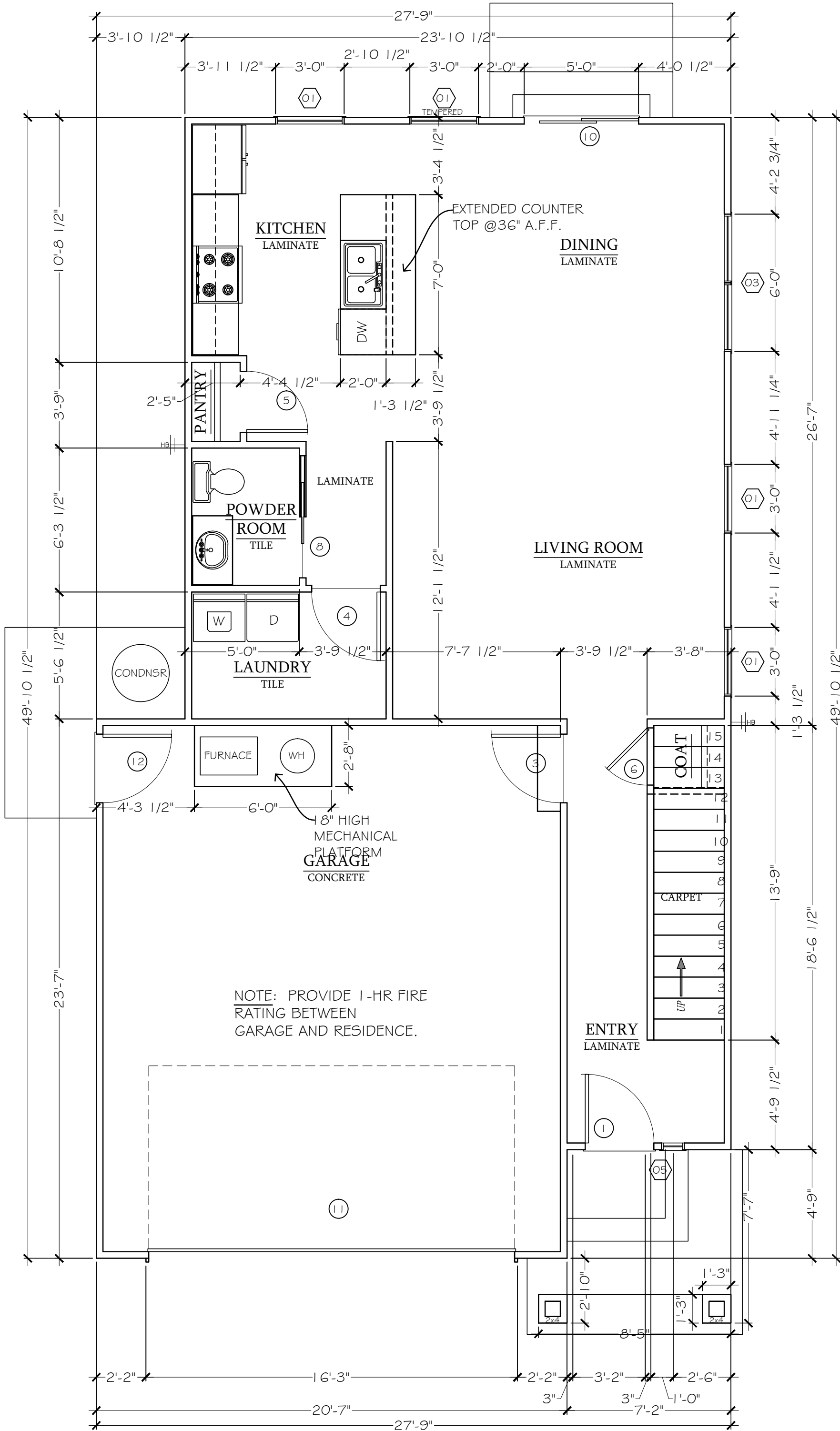
@ 2 LEVEL

Scale=3/8"=1'-0"



### TYPICAL WALL SECTION

Scale=3/8"=1'-0"



Garage: 476 Sq Ft

Upper Level: 1112 Sq Ft

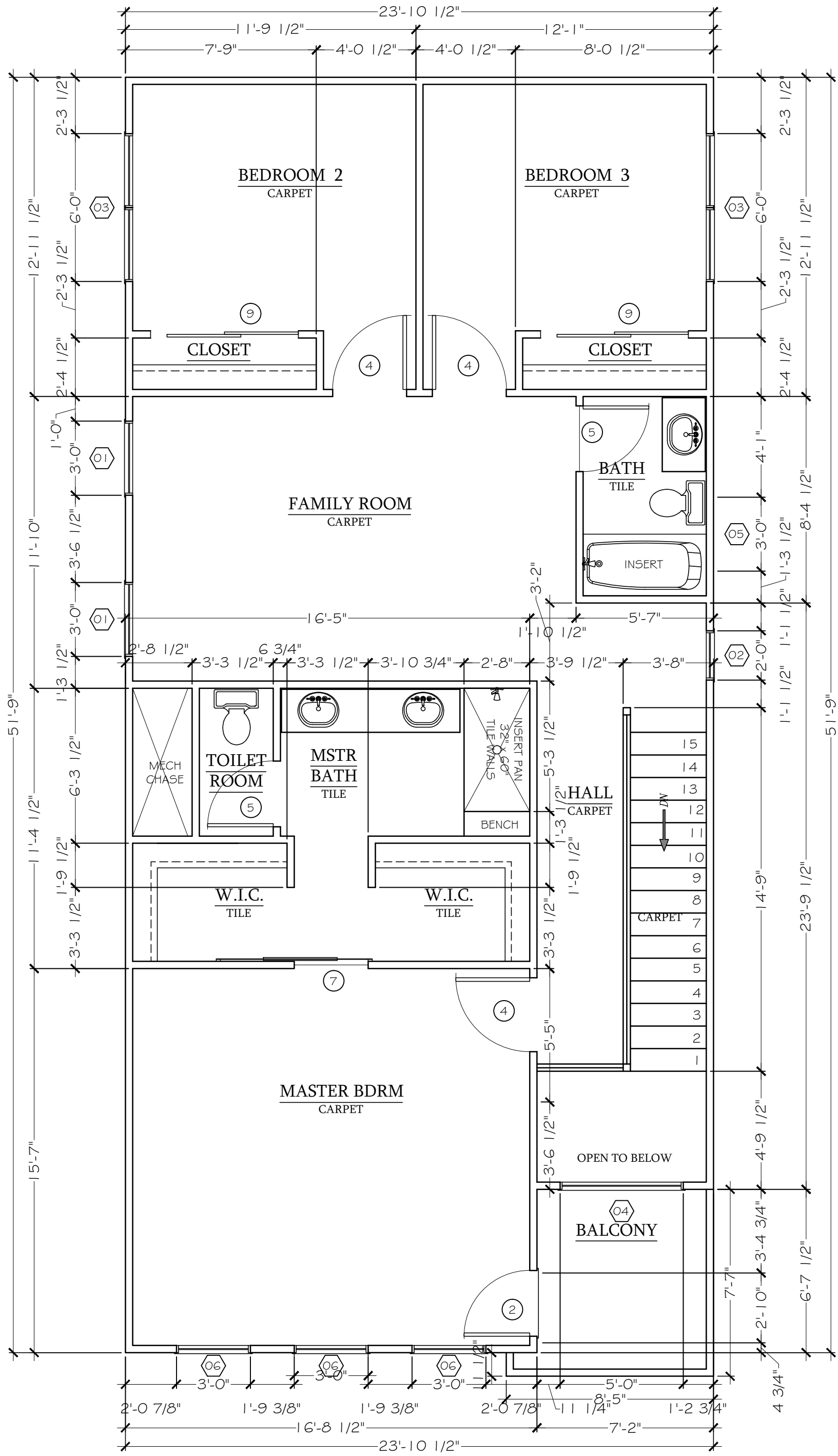
Main Level: 773 Sq Ft

Total Living: 1885 Sq Ft

### FLOOR PLAN

Scale=1/4"=1'-0"

WINDOW SCHEDULE						
SYMBOL	SIZE	MATERIAL	TYPE	HEADER	COMMENTS	QUANTITY
①	3o5o	VINYL	SINGLE-HUNG	(2)2"X8"	INSULATING	6
②	2o5o	VINYL	FIXED	(2)2"X8"	INSULATING-TEMPERED	1
③	PR-3o5o	VINYL	SINGLE-HUNG	(2)2"X10"	INSULATING	3
④	5o4o	VINYL	FIXED	(2)2"X10"	INSULATING-TEMPERED	1
⑤	1o6o	VINYL	SIDELITE	(2)2"X8"	INSULATING-TEMPERED	1
⑥	3o5o	VINYL	FIXED	(2)2"X8"	INSULATING	3



Upper Level: 1057 Sq Ft

### UPPER FLOOR PLAN

Scale=1/4"=1'-0"

PRELIMINARY DOCUMENTS  
Not For Construction

Buyer  
Approved: \_\_\_\_\_  
Date: \_\_\_\_\_

NOTE: 11'x17" Drawings  
are printed at Half Scale.

DISCLAIMER  
This plan is not 100% to scale as internal  
features or appliances shown other than those  
noted in your specifications are for effect only and  
not included.  
COPYRIGHT  
This drawing remains the property of  
Integrity Homes, LLC, and may not be used  
or reproduced in whole or without written  
permission.

**INTEGRITY HOMES**  
Phone: 970-255-6520 Fax: 970-255-1017  
1380 North Ave.  
Grand Junction, CO 81501

**THE VINEYARD**  
VISTA MESA SPEC  
Grand Junction, CO

**GOLD Inclusions**

Revisions  
△ Date/Revision Item

Phase  
FD

Date  
00-000-2022

Drawn by:  
EG

**FLOOR  
PLAN**

**A1**