

DOOR SCHEDULE					
SYMBOL	WIDTH	HEIGHT	HEADER	NOTES	QUANTITY
①	3'-0"	6'-8"	(2)2"x10"	INSULATED DOOR	1
②	3'-0"	6'-8"	(2)2"x10"	INSULATED DOOR HALF LIGHT	1
③	3'-0"	6'-8"	(2)2"x10"	20 MIN. INSULATED DOOR	1
④	3'-0"	6'-8"		INTERIOR DOOR	2
⑤	2'-8"	6'-8"			2
⑥	2'-6"	6'-8"			5
⑦	2'-4"	6'-8"			2
⑧	2'-0"	6'-8"			2
⑨	1'-6"	6'-8"			1
⑩	PR-2'-0"	6'-8"	(2)9-1/2"LVL5	FRENCH DOORS FULL LIGHT	1
⑪	PR-2'-6"	6'-8"	(2)9-1/2"LVL5	BI-PASS DOORS	1
⑫	PR-2'-0"	6'-8"		BI-PASS DOORS	1
⑬	PR-2'-6"	6'-8"	(2)11-7/8"LVL5	SLIDING GLASS PATIO / INSULATED	1
⑭	16'-0"	8'-0"	(2)11-7/8"LVL5	OVERHEAD DOOR	1

WINDOW SCHEDULE						
SYMBOL	SIZE	MATERIAL	TYPE	HEADER	COMMENTS	QUANTITY
①	PR-3o5o	VINYL	SINGLE-HUNG	(2)9-1/2"LVL5	INSULATING	2
②	2o5o	VINYL	FIXED	(2)2"x10"	INSULATING	2
③	2o3o	VINYL	SINGLE-HUNG	(2)2"x10"	INSULATING-OBSCURE	1
④	4o3o	VINYL	SINGLE-HUNG	(2)2"x10"	INSULATING-OBSCURE	1
⑤	4o5o	VINYL	SINGLE-HUNG	(2)2"x10"	INSULATING	1
⑥	3o3o	VINYL	SINGLE-HUNG	(2)2"x10"	INSULATING	1
⑦	3o5o	VINYL	SINGLE-HUNG	(2)2"x10"	INSULATING	1
⑧	4o4o	VINYL	SLIDER	(2)2"x10"	INSULATING	1

GENERAL NOTES:

EXTERIOR DOORS: 1-3/4" INSULATED PRE-HUNG VINYL CLAD or WD (PRE-BORED FOR LOCKS & DEADBOLT)

INTERIOR DOORS: 1-3/8" PRE-HUNG HOLLOW CORE WOOD, LEVER-TYPE LOCKSETS, DOORS & HARDWARE AS APPROVED BY OWNER.

OVERHEAD DOOR: 1-3/4" INSUL. ROLL-TYPE DOORS w/TRACK, GUIDES, AUTO OPEN & LOCKS.

EXTERIOR WINDOWS: INSULATING VINYL, LOW "E" GLAZING, U-VALUE CERTIFIED.

CLOSETS: 1-1/2" PAINTED SHELF, 1- METAL POLE, SHELF @ 68" A.F.F. CONFIGURATION BY CONTRACTOR.

BATH: LAVATORY SINK BASIN, T.P. HOLDER, ROBE HOOK ON DOOR (PRIMARY), TOWEL BARS (1-24", 1-36").

KITCHEN & BATH CABINET & CTR. TOP DESIGN BY OTHERS.

EXTERIOR FINISH as NOTED ON PLAN. DRYWALL INTERIOR FINISH MOISTURE-RESISTANT DRYWALL "GREENBOARD" IN BATHS & SINK.

PROVIDE GUTTER & DOWNSPOUT SYSTEM TO PROVIDE POSITIVE DRAINAGE AWAY FROM STRUCTURE. DO NOT SCALE DRAWINGS.

DIMENSIONS TAKE PRECEDENCE OVER SCALE; LARGER SCALE OVER SMALLER SCALE. & DETAILS OVER NOTES. GEN'L CONTRACTOR & SUB-CONTRACTORS SHALL VERIFY DRAWINGS & SITE CONDITIONS BEFORE COMMENCEMENT OF THE WORK.

ANY DISCREPANCY IN THE DRAWINGS OR DOCUMENTS SHALL BE BROUGHT TO THE ATTENTION OF THE ARCHITECT/ENGINEER PRIOR TO COMMENCEMENT OF THE WORK.

ALL WORK SHALL COMPLY WITH THE MOST CURRENT ADOPTED I.R.C., STATE ENERGY CODE, & LOCAL BLDG. DEPT. REQMNTs.

PRE-MANUFACTURED FLR. & ROOF TRUSSES AS APPROVED BY THE ARCHITECT/ENGINEER.

ATTIC SPACE VENTILATION PER I.R.C. R806.

ELECTRICAL NOTES:

ELECTRICAL CONTRACTOR TO SUPPLY ALL LABOR & MATERIAL TO PERFORM THE WORK PER APPLICABLE GOVERNING CODE (NEC & LOCAL).

THE WORK SHALL INCLUDE: FANLITES, SWITCHES, MOTORS, RECESSED LIGHTS, SMOKE & CO2 ALARMS, OUTLETS, PANELS, BREAKERS, POWER & LIGHTING.

OWNER SELECTION OF FINISHES (COLOR & TYPE) BEFORE INSTALLATION.

MECHANICAL:

MECHANICAL CONTRACTOR TO SUPPLY ALL LABOR & MATERIAL TO PERFORM THE WORK PER APPLICABLE GOVERNING CODEs (UMC, UPC, & LOCAL).

GOVERNING CODE (UMC, UPC, & LOCAL).

THE WORK INCLUDES: 50 GALLON GAS-FIRED WTR. HTR. AIR-CONDITIONING, VENTING, MAKE-UP AIR FOR EXHAUST FANS, WATER CLOSETS, TUB & ENCLOSURE, SHOWER, SHOWER PAN OR ENCLOSURE & LAVs. FORCED-AIR HEAT SYSTEM & FURNACE STAINLESS STEEL DOUBLE SINK w/GARBAGE DISPOSAL, ICE-MAKING CONNECTION (FOR REFRIGERATOR), UNDER-COUNTER DISHWASHER.

Buyer
Approved: _____
Date: _____



INTEGRITY HOMES

Phone: 970-255-6520 Fax: 970-255-1017
1380 North Ave.
Grand Junction, CO 81501

ADDRESS

SILVERADO

VISTA MESA SPEC

GRAND JUNCTION, CO

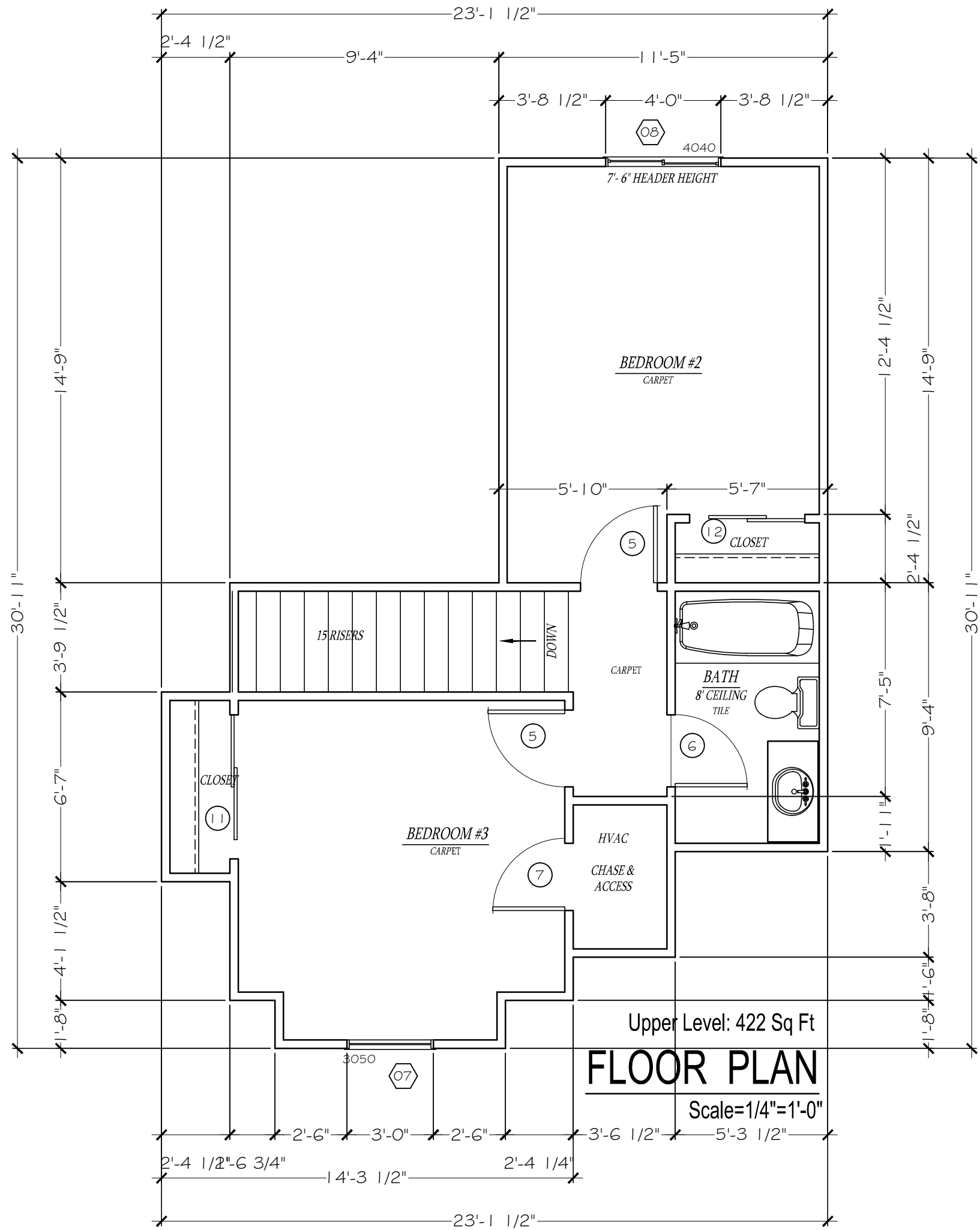
GOLD Inclusions

Revisions
DATE/REVISION

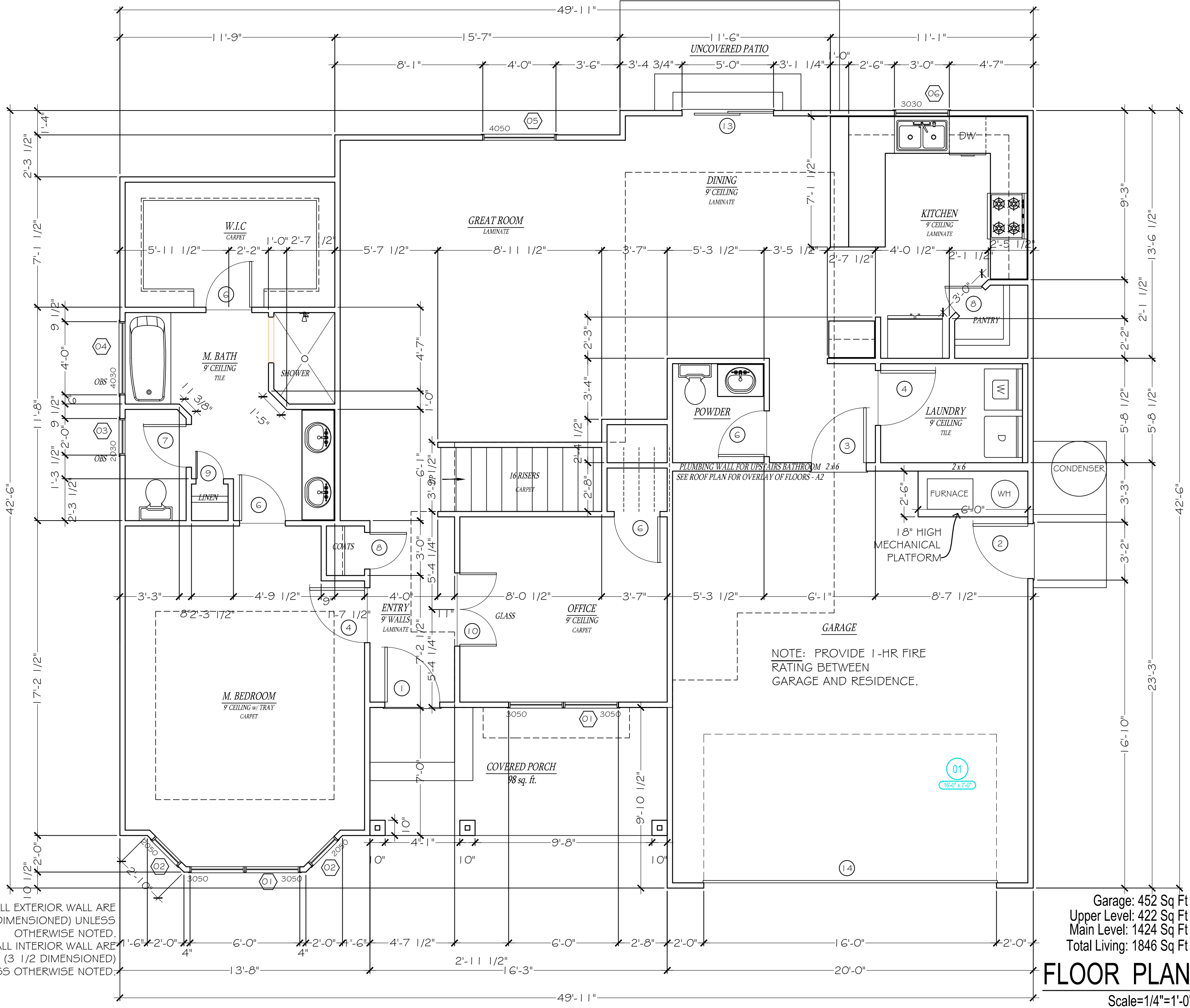
Phase FD Date 00-000-00 Drawn by: EG

FLOOR PLAN

A1



PRELIMINARY DOCUMENTS
Not For Construction



NOTE: 1/4" = 1'-0" Drawings are printed at Half Scale.

Garage: 452 Sq Ft
Upper Level: 422 Sq Ft
Main Level: 1424 Sq Ft
Total Living: 1846 Sq Ft

FLOOR PLAN
Scale=1/4"=1'-0"