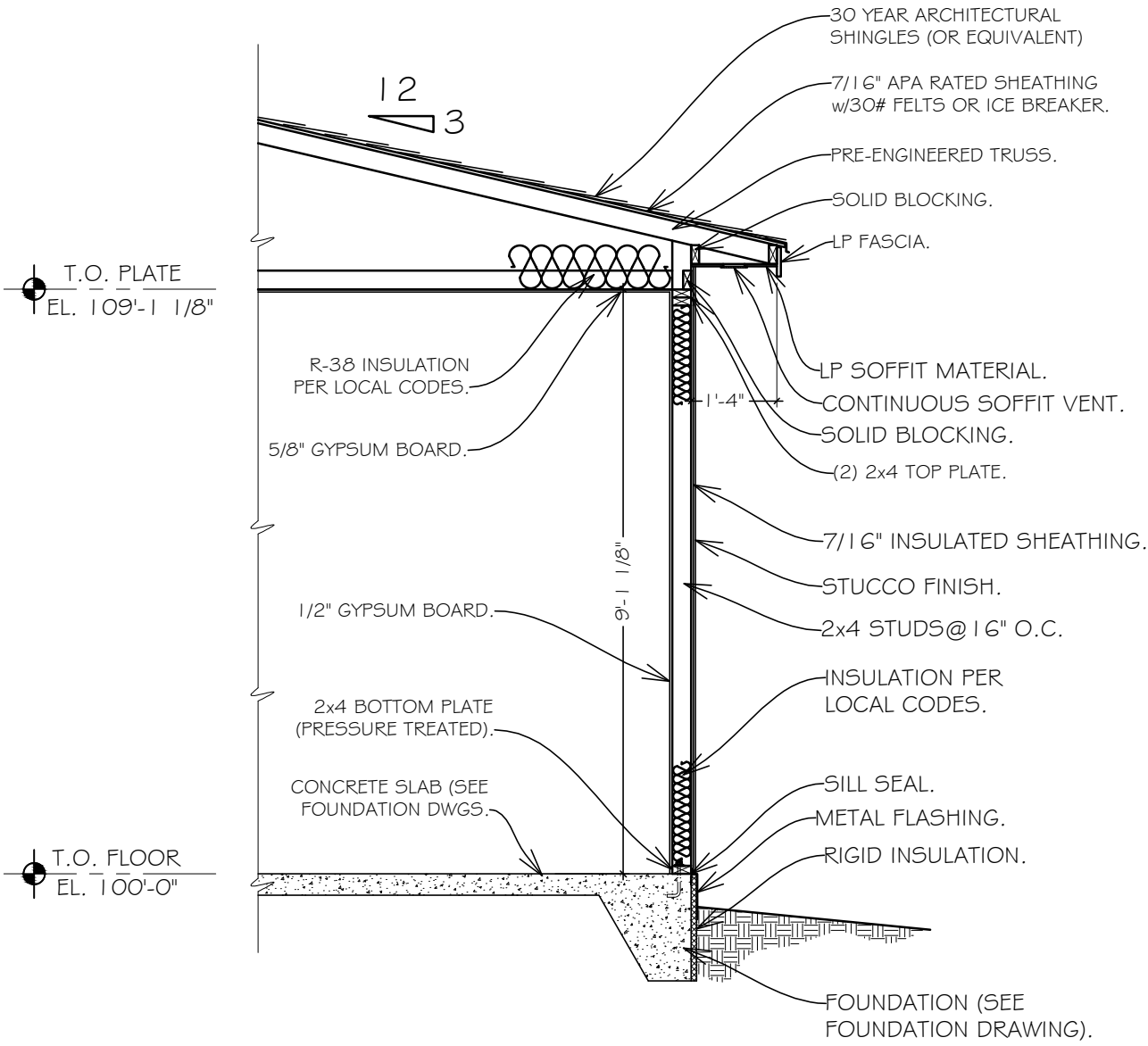


Buyer
Approved: _____

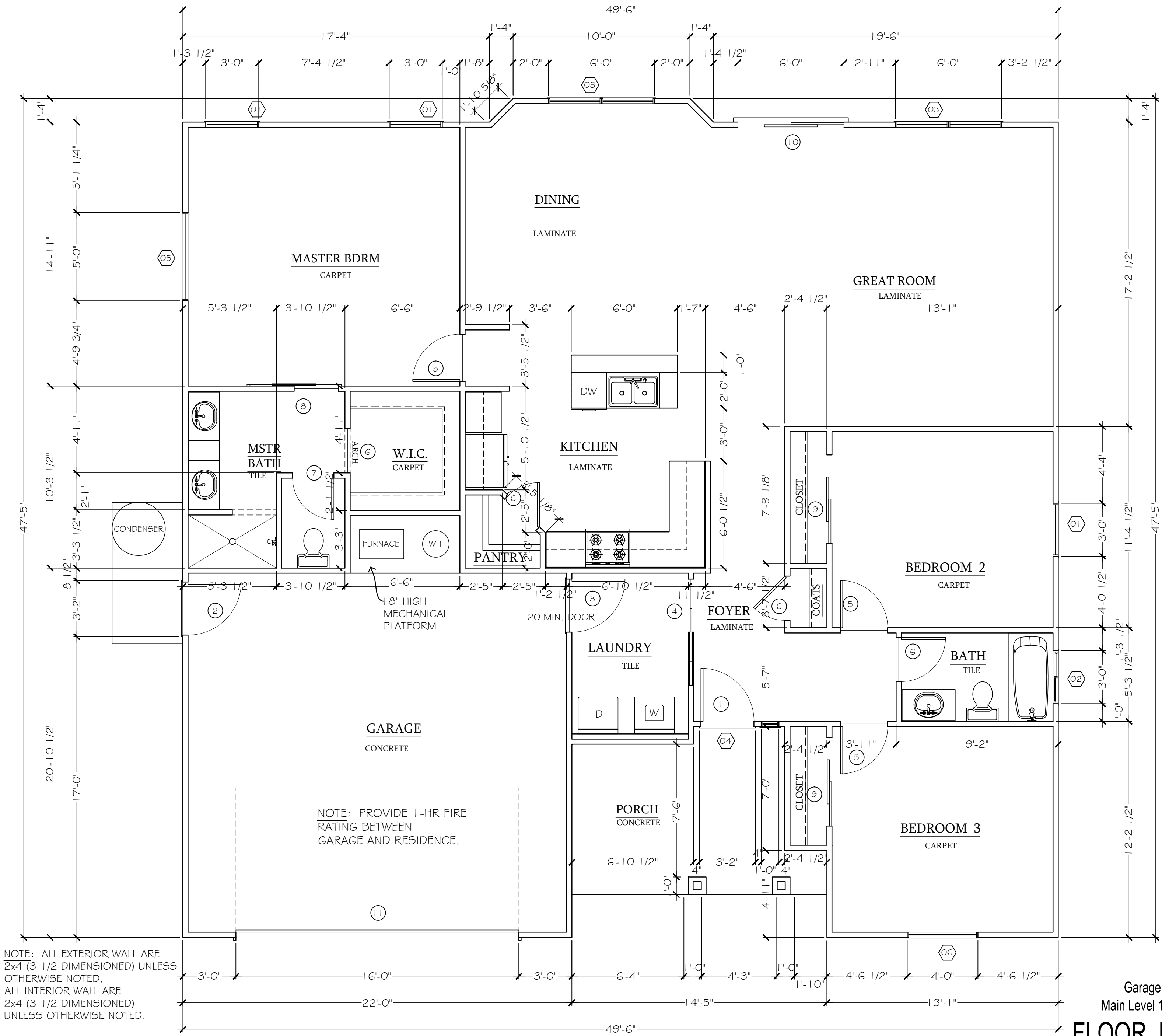
Date: _____

DOOR SCHEDULE					
SYMBOL	WIDTH	HEIGHT	HEADER	NOTES	QUANTITY
①	3'-0"	6'-8"	(2)2"x8"	INSULATED DOOR	1
②	3'-0"	6'-8"	(2)2"x8"	INSULATED DOOR HALF LIGHT	1
③	3'-0"	6'-8"	(2)2"x8"	20 MIN. INSULATED DOOR	1
④	3'-0"	6'-8"		POCKET DOOR	1
⑤	2'-8"	6'-8"			3
⑥	2'-6"	6'-8"			4
⑦	2'-4"	6'-8"			1
⑧	3'-0"	6'-8"	(2)9-1/2"LVL5	BARN DOOR	1
⑨	PR-2'-6"	6'-8"		BI-PASS DOORS	2
⑩	PR-3'-0"	6'-8"	(2)9-1/2"LVL5	SLIDING GLASS PATIO / INSULATED	1
⑪	16'-0"	8'-0"	(2)11-7/8"LVL5	OVERHEAD DOOR	1

WINDOW SCHEDULE						
SYMBOL	SIZE	MATERIAL	TYPE	HEADER	COMMENTS	QUANTITY
①	3o5o	VINYL	SINGLE-HUNG	(2)2"x8"	INSULATING	3
②	3o2o	VINYL	SLIDER	(2)2"x8"	INSULATING	1
③	PR-3o5o	VINYL	SINGLE-HUNG	(2)2"x8"	INSULATING	2
④	3o14	VINYL	FIXED	(2)2"x8"	INSULATING-TRANSOM	1
⑤	5o16	VINYL	FIXED	(2)9-1/2"LVL5	INSULATING	1
⑥	4o5o	VINYL	SINGLE-HUNG	(2)9-1/2"LVL5	INSULATING	1



TYPICAL WALL SECTION
Scale=3/8\"=1'-0"



NOTE: ALL EXTERIOR WALL ARE 2x4 (3 1/2 DIMENSIONED) UNLESS OTHERWISE NOTED.
ALL INTERIOR WALL ARE 2x4 (3 1/2 DIMENSIONED) UNLESS OTHERWISE NOTED.

Garage 470 Sq Ft
Main Level 1678 Sq Ft
FLOOR PLAN
Scale=1/4\"=1'-0"

GENERAL NOTES:

EXTERIOR DOORS: 1-3/4\" INSULATED PRE-HUNG VINYL CLAD or WD (PRE-BORED FOR LOCKS & DEADBOLT)

INTERIOR DOORS: 1-3/8\" PRE-HUNG HOLLOW CORE WOOD. LEVER-TYPE LOCKSETS, DOORS & HARDWARE AS APPROVED BY OWNER.

OVERHEAD DOOR: 1-3/4\" INSUL. ROLL-TYPE DOORS w/TRACK, GUIDES, AUTO OPEN & LOCKS.

EXTERIOR WINDOWS: INSULATING VINYL, LOW "E" GLAZING, U-VALUE CERTIFIED.

CLOSETS: 1-1 1/2\" PAINTED SHELF, 1- METAL POLE, SHELF @ 68\" A.F.F. CONFIGURATION BY CONTRACTOR.

BATH: LAVATORY SINK, BASIN, T.P. HOLDER, ROBE HOOK ON DOOR (PRIMARY), TOWEL BARS (1-24\", 1-36\").

KITCHEN & BATH CABINET & CTR. TOP DESIGN BY OTHERS. EXTERIOR FINISH as NOTED ON PLAN, DRYWALL INTERIOR FINISH MOISTURE-RESISTANT DRYWALL "GREENBOARD" IN BATHS & SINK.

PROVIDE GUTTER & DOWNSPOUT SYSTEM TO PROVIDE POSITIVE DRAINAGE AWAY FROM STRUCTURE. DO NOT SCALE DRAWINGS.

DIMENSIONS TAKE PRECEDENCE OVER SCALE; LARGER SCALE OVER SMALLER SCALE, & DETAILS OVER NOTES. GEN'L CONTRACTOR & SUB-CONTRACTORS SHALL VERIFY DRAWINGS & SITE CONDITIONS BEFORE COMMENCEMENT OF THE WORK.

ANY DISCREPANCY IN THE DRAWINGS OR DOCUMENTS SHALL BE BROUGHT TO THE ATTENTION OF THE ARCHITECT/ENGINEER PRIOR TO COMMENCEMENT OF THE WORK.

ALL WORK SHALL COMPLY WITH THE MOST CURRENT ADOPTED I.R.C., STATE ENERGY CODE, & LOCAL BLDG. DEPT. REQMNTs.

PRE-MANUFACTURED FLR. & ROOF TRUSSES AS APPROVED BY THE ARCHITECT/ENGINEER.

ATTIC SPACE VENTILATION PER I.R.C. R806.

ELECTRICAL NOTES:

ELECTRICAL CONTRACTOR TO SUPPLY ALL LABOR & MATERIAL TO PERFORM THE WORK PER APPLICABLE GOVERNING CODE (NEC & LOCAL).

THE WORK SHALL INCLUDE: FANLITES, SWITCHES, MOTORS, RECESSED LIGHTs, SMOKE & CO2 ALARMS, OUTLETS, PANELs, BREAKERS, POWER & LIGHTING.

OWNER SELECTION OF FINISHes (COLOR & TYPE) BEFORE INSTALLATION.

MECHANICAL:

MECHANICAL CONTRACTOR TO SUPPLY ALL LABOR & MATERIAL TO PERFORM THE WORK PER APPLICABLE GOVERNING CODEs (UMC, UPC, & LOCAL).

GOVERNING CODE (UMC, UPC, & LOCAL).

THE WORK INCLUDES: 50 GALLON GAS-FIRED WTR. HTR, AIR-CONDITIONING, VENTING, MAKE-UP AIR FOR EXHAUST FANS, WATER CLOSETS, TUB & ENCLOSURE, SHOWER, SHOWER PAN OR ENCLOSURE & LAVs. FORCED-AIR HEAT SYSTEM & FURNACE STAINLESS STEEL DOUBLE SINK w/GARBAGE DISPOSAL, ICE-MAKING CONNECTION (FOR REFRIGERATOR), UNDER-COUNTER DISHWASHER.

PRELIMINARY DOCUMENTS
Not For Construction



Phone: 970-255-6520 Fax: 970-255-1017
1380 North Ave.
Grand Junction, CO 81501

THE ORCHARD
VISTA MESA SPEC
GRAND JUNCTION, CO

GOLD Inclusions

Revisions
DATE/REVISION

Phase FD Date 00-000-000 Drawn by: EG

FLOOR PLAN

A1

DISCLAIMER
This plan is not 100% to scale as internal features or appliances shown other than those noted in your specifications are for effect only and not included.

COPYRIGHT
This drawing remains the property of Integrity Homes, LLC, and may not be used or reproduced in whole or without written permission.