

DOOR SCHEDULE					
SYMBOL	WIDTH	HEIGHT	HEADER	NOTES	QUANTITY
①	3'-0"	6'-8"	(2)2"x8"	INSULATED DOOR	1
②	3'-0"	6'-8"	(2)2"x8"	20 MIN. INSULATED DOOR	1
③	3'-0"	6'-8"		INTERIOR DOOR	4
④	2'-8"	6'-8"		INTERIOR DOOR	3
⑤	PR-2'-6"	6'-8"		BI-PASS DOOR	3
⑥	PR-1'-6"	6'-8"		BI-FOLD DOOR	1
⑦	3'-0"	6'-8"		POCKET DOOR	1
⑧	2'-8"	6'-8"		POCKET DOOR	2
⑨	PR-2'-6"	6'-8"	(2)9'-1/2"LVL5	SLIDING GLASS PATIO DOOR	1
⑩	16'-0"	8'-0"	(2)11'-7/8"LVL5	OVERHEAD DOOR	1
⑪	PR-2'-6"	6'-8"	(2)2"x10"	BARN DOORS	1
⑫	3'-0"	6'-8"	(2)2"x8"	INSULATED DOOR HALF LIGHT	1

WINDOW SCHEDULE						
SYMBOL	SIZE	MATERIAL	TYPE	HEADER	COMMENTS	QUANTITY
①	3o5o	VINYL	SINGLE-HUNG	(2)2"x8"	INSULATING	5
②						
③	PR-3o5o	VINYL	SINGLE-HUNG	(2)2"x10"	INSULATING	3
④	3o1o	VINYL	SLIDER	(2)2"x8"	INSULATING-OBSCURED	1
⑤	2o4o	VINYL	SINGLE-HUNG	(2)2"x8"	INSULATING	1
⑥	2o5o	VINYL	FIXED-W/GRIDS	(2)2"x8"	INSULATING	1

## GENERAL NOTES:

EXTERIOR DOORS: 1-3/4" INSULATED PRE-HUNG VINYL CLAD or WD (PRE-BORED FOR LOCKS & DEADBOLT)

INTERIOR DOORS: 1-3/8" PRE-HUNG HOLLOW CORE WOOD. LEVER-TYPE LOCKSETS, DOORS & HARDWARE AS APPROVED BY OWNER.

OVERHEAD DOOR: 1-3/4" INSUL. ROLL-TYPE DOORS w/TRACK, GUIDES, AUTO OPEN & LOCKs.

EXTERIOR WINDOWS: INSULATING VINYL, LOW "E" GLAZING, U-VALUE CERTIFIED.

CLOSETS: 1-1/2" PAINTED SHELF, 1- METAL POLE, SHELF @ 68" A.F.F. CONFIGURATION BY CONTRACTOR.

BATH: LAVATORY SINK BASIN, T.P. HOLDER, ROBE HOOK ON DOOR (PRIMARY), TOWEL BARS (1-24", 1-36").

KITCHEN & BATH CABINET & CTR. TOP DESIGN BY OTHERS. EXTERIOR FINISH as NOTED ON PLAN, DRYWALL INTERIOR FINISH MOISTURE-RESISTANT DRYWALL "GREENBOARD" IN BATHS & SINK.

PROVIDE GUTTER & DOWNSPOUT SYSTEM TO PROVIDE POSITIVE DRAINAGE AWAY FROM STRUCTURE. DO NOT SCALE DRAWINGS.

DIMENSIONS TAKE PRECEDENCE OVER SCALE; LARGER SCALE OVER SMALLER SCALE, & DETAILS OVER NOTES. GEN'L CONTRACTOR & SUB-CONTRACTORS SHALL VERIFY DRAWINGS & SITE CONDITIONS BEFORE COMMENCEMENT OF THE WORK.

ANY DISCREPANCY IN THE DRAWINGS OR DOCUMENTS SHALL BE BROUGHT TO THE ATTENTION OF THE ARCHITECT/ENGINEER PRIOR TO COMMENCEMENT OF THE WORK.

ALL WORK SHALL COMPLY WITH THE MOST CURRENT ADOPTED I.R.C., STATE ENERGY CODE, & LOCAL BLDG. DEPT. REQMNTs.

PRE-MANUFACTURED FLR. & ROOF TRUSSES AS APPROVED BY THE ARCHITECT/ENGINEER.

ATTIC SPACE VENTILATION PER I.R.C. R806.

## ELECTRICAL NOTES:

ELECTRICAL CONTRACTOR TO SUPPLY ALL LABOR & MATERIAL TO PERFORM THE WORK PER APPLICABLE GOVERNING CODE (NEC & LOCAL).

THE WORK SHALL INCLUDE: FAN/LITES, SWITCHES, MOTORS, RECESSED LIGHTs, SMOKE & CO2 ALARMS, OUTLETS, PANELs, BREAKERS, POWER & LIGHTING.

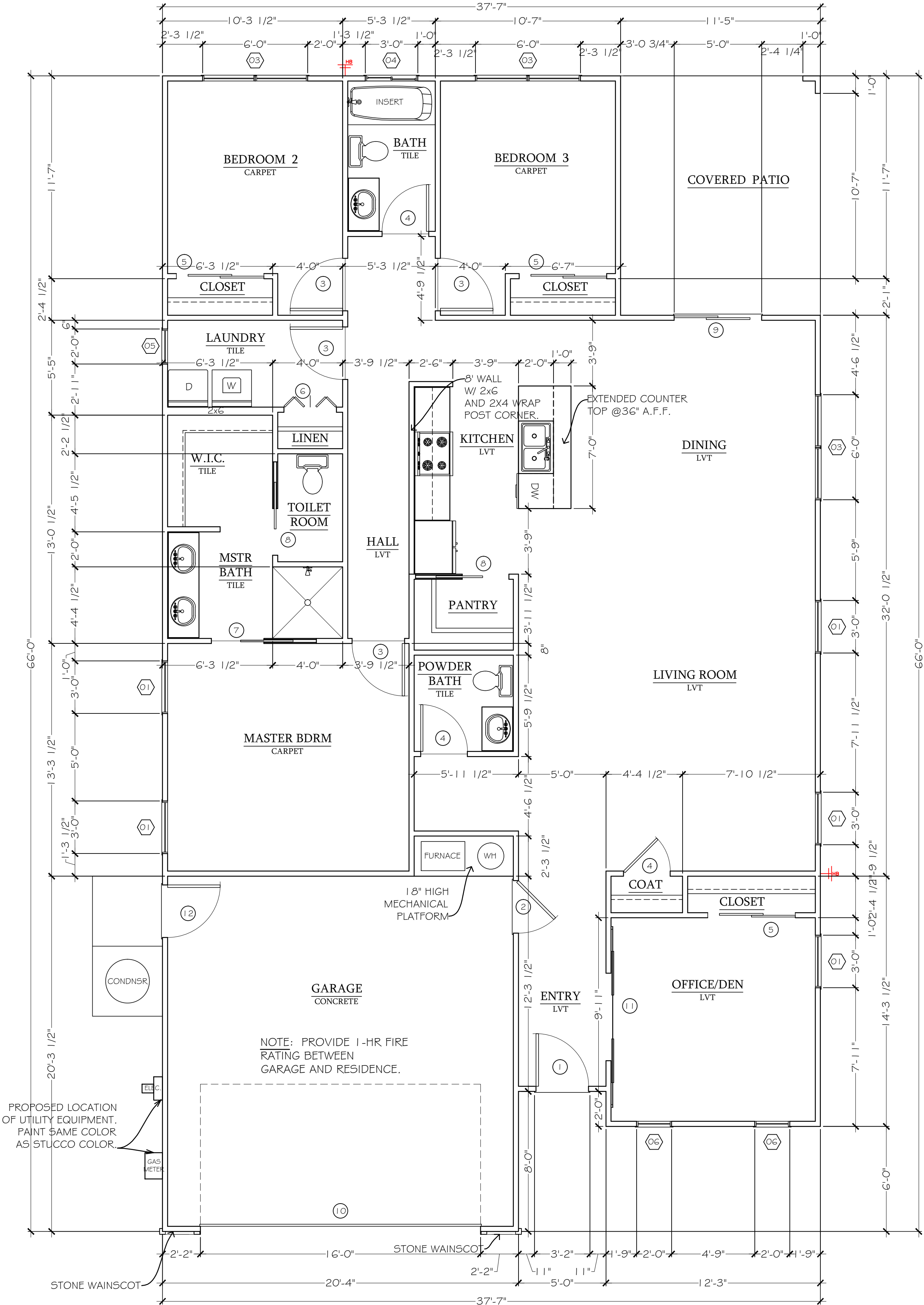
OWNER SELECTION OF FINISHes (COLOR & TYPE) BEFORE INSTALLATION.

## MECHANICAL:

MECHANICAL CONTRACTOR TO SUPPLY ALL LABOR & MATERIAL TO PERFORM THE WORK PER APPLICABLE GOVERNING CODEs (UMC, UPC, & LOCAL).

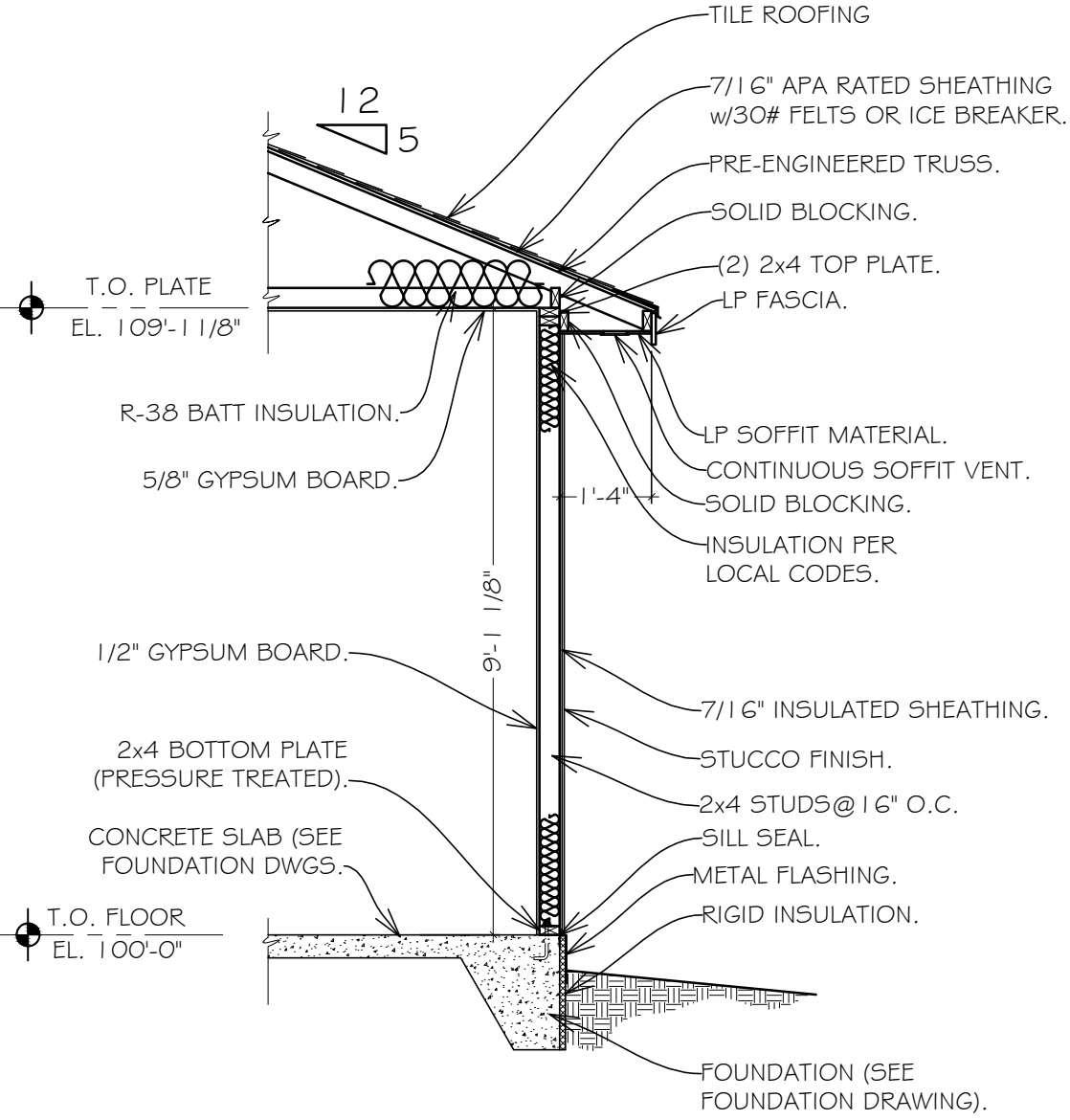
GOVERNING CODE (UMC, UPC,, & LOCAL).

THE WORK INCLUDES: 50 GALLON GAS-FIRED WTR. HTR, AIR-CONDITIONING, VENTING, MAKE-UP AIR FOR EXHAUST FANS, WATER CLOSETS, TUB & ENCLOSURE, SHOWER, SHOWER PAN OR ENCLOSURE & LAVs, FORCED-AIR HEAT SYSTEM & FURNACE STAINLESS STEEL DOUBLE SINK w/GARBAGE DISPOSAL, ICE-MAKING CONNECTION (FOR REFRIGERATOR), UNDER-COUNTER DISHWASHER.



Garage: 422 Sq Ft  
Total Living: 1789 Sq Ft  
**FLOOR PLAN**  
Scale=1/4"=1'-0"

Buyer  
Approved: \_\_\_\_\_  
Date: \_\_\_\_\_



**TYPICAL WALL SECTION**  
Scale=3/8"=1'-0"

NOTE: 1 1/4" x 1 7/8" Drawings  
are printed at Half Scale.

DISCLAIMER  
This plan is not 100% to scale as internal dimensions may vary slightly from those shown correct to Sales Proposal. Any furnishings, fixtures or appliances shown other than those noted in your specifications are for effect only and not included.

COPYRIGHT  
This drawing remains the property of Integrity Homes, LLC, and may not be used or reproduced in whole or without written permission.

INTEGRITY HOMES

Phone: 970-255-6520 Fax: 970-255-1017  
1380 North Ave.  
Grand Junction, CO 81501

**ROSANNA**  
**MESA ESTATES**  
**2833 KELSO MESA DR.**  
**Grand Junction, CO**

### Silver Inclusions

Revisions		
	Date/Revision	Item

Phase	Date	Drawn by:
CD	31-JAN-2020	EG

**FLOOR PLAN**

**A1**