

# SILTSOXX®

## Compost Filter Sock



### Controls Costs While You Control Runoff.

Easily installed for a variety of construction applications, SiltSoxx reduces the labor cost required for installation and maintenance, while delivering optimal performance.

Common applications include perimeter control, inlet protection, check dams, and slope interruption.

SiltSoxx is prefilled with certified FilterMedia™, ready to ship, and easy to install. Available in a variety of sizes, configurations, and netting materials for any project requirements.

SiltSoxx is also available in two natural netting options, eliminating the need for field removal.

### ORIGINAL Netting:

- The most widely recognized & used polypropylene netting in the industry
- Available in classic green/black stripe

### NATURAL ORIGINAL Netting:

- 100% Biodegradable Cotton fiber
- Functional field longevity up to 12 mo.

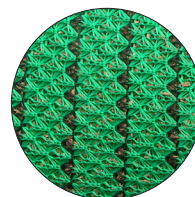
### NATURAL+ Netting:

- 100% Biodegradable Wood fiber
- Functional field longevity up to 18 mo.



## SiltSoxx Original Product Specs:

|   |   |
|---|---|
| Netting Material Type                             | Original Pallet Netting<br>Heavy Duty Multi-Filament Polypropylene (MFPP) |
| Netting Degradation                               | Photodegradable   |
| Netting Diameters                                 | 5", 8", 12", 18", 24"   |
| Netting Opening Size                              | 1/8"  |
| Netting Color                                     | Green w/ Thin Black Stripe  |
| Fabric Tensile Strength (ASTM D4595) <sup>1</sup> | 546 lbs   |
| Fill Type   | Tested & Certified, Locally Sourced Composted FilterMedia                 |
| Functional Longevity <sup>2</sup>                 | up to 5 years   |
| Edging Material                                   | Edging Media Bags Available   |
| Staking Recommendation                            | Every 10-ft (stakes not included on precuts)                              |



Netting Sample



Fill Sample

<sup>1</sup>Tensile Strength is based on 12" diameter using ATSM D4595. See Filtrex TechLink #3342 for full tensile strength testing.

<sup>2</sup>Functional longevity ranges are estimates only. Site specific environmental conditions may result in significantly shorter or longer time periods.

## ORIGINAL Item List:

| Item Number | Diameter | Total Linear Feet per pallet | Unit Length | Units per pallet | Stakes per pallet | Pallet Weight |
|-------------|----------|------------------------------|-------------|------------------|-------------------|---------------|
| P05-400S2   | 5-in     | 400-ft                       | 200         | 2                | 42                | ~ 1600 lbs    |
| PN05-400S16 | 5-in     | 400-ft                       | 25-ft       | 16               | 0                 | ~ 1600 lbs    |
| P08-200     | 8-in     | 200-ft                       | 200-ft      | 1                | 21                | ~ 1600 lbs    |
| PN08-200S20 | 8-in     | 200-ft                       | 10-ft       | 20               | 0                 | ~ 1600 lbs    |
| PN08-200S10 | 8-in     | 200-ft                       | 20-ft       | 10               | 0                 | ~ 1600 lbs    |
| P12-110     | 12-in    | 110-ft                       | 110-ft      | 1                | 12                | ~ 1700 lbs    |
| PN12-100S10 | 12-in    | 100-ft                       | 10-ft       | 10               | 0                 | ~ 1650 lbs    |
| P18-55      | 18-in    | 55-ft                        | 55-ft       | 1                | 7                 | ~ 1750 lbs    |
| PN18-50S5   | 18-in    | 50-ft                        | 10-ft       | 5                | 0                 | ~ 1650 lbs    |
| P24-40      | 24-in    | 40-ft                        | 40-ft       | 1                | 5                 | ~ 1800 lbs    |

## Shipping Specs:

|                     |  |
|---------------------|--|
| Pallets per TL      | 26   |
| Shipping Dimensions | 40L x 48W x 66H  |
| Packaging           | 40 x 48 Pallet with Plastic Stretch-Wrap or Super Sack |
| Storage Life        | Under Roof - 6 months / Outdoors - 3 months            |

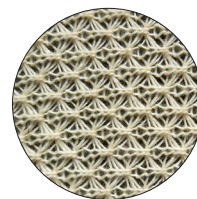
| Diameter | Stake Size (Nominal) |
|----------|----------------------|
| 5-in     | 1" x 1" x 12"        |
| 8-in     | 2" x 2" x 24"        |
| 12-in    | 2" x 2" x 24"        |
| 18-in    | 2" x 2" x 36"        |
| 24-in    | 2" x 2" x 42"        |

# SILTSOXX®

## Natural Original Compost Filter Sock

### SiltSoxx Natural Original Product Specs:

|   |   |
|---|---|
| Netting Material Type                             | Natural Original Pallet Netting<br>All Natural Biodegradable Cotton Fiber |
| Netting Degradation                               | Biodegradable   |
| Netting Diameters                                 | 5", 8", 12"   |
| Netting Opening Size                              | 1/8"  |
| Netting Color                                     | Beige   |
| Fabric Tensile Strength (ASTM D4595) <sup>1</sup> | 175 lbs   |
| Fill Type   | Tested & Certified, Locally Sourced Composted FilterMedia                 |
| Functional Longevity <sup>2</sup>                 | up to 12 months   |
| Edging Material                                   | Edging Media Bags Available   |
| Staking Recommendation                            | Every 10-ft (stakes not included on precuts)                              |



Netting Sample



Fill Sample

<sup>1</sup>Tensile Strength is based on 12" diameter using ATSM D4595. See Filtrex TechLink #3342 for full tensile strength testing.

<sup>2</sup>Functional longevity ranges are estimates only. Site specific environmental conditions may result in significantly shorter or longer time periods.

### NATURAL ORIGINAL Item List:

| Item Number  | Diameter | Total Linear Feet per pallet | Unit Length | Units per pallet | Stakes per pallet | Pallet Weight |
|--------------|----------|------------------------------|-------------|------------------|-------------------|---------------|
| PC05-400S2   | 5-in     | 400-ft                       | 200         | 2                | 42                | ~ 1600 lbs    |
| PCN05-400S16 | 5-in     | 400-ft                       | 25-ft       | 16               | 0                 | ~ 1600 lbs    |
| PC08-200     | 8-in     | 200-ft                       | 200-ft      | 1                | 21                | ~ 1600 lbs    |
| PCN08-200S20 | 8-in     | 200-ft                       | 10-ft       | 20               | 0                 | ~ 1600 lbs    |
| PCN08-200S10 | 8-in     | 200-ft                       | 20-ft       | 10               | 0                 | ~ 1600 lbs    |
| PC12-110     | 12-in    | 110-ft                       | 110-ft      | 1                | 12                | ~ 1700 lbs    |
| PCN12-100S10 | 12-in    | 100-ft                       | 10-ft       | 10               | 0                 | ~ 1650 lbs    |

### Shipping Specs:

|                     |   |
|---------------------|---|
| Pallets per TL      | 26  |
| Shipping Dimensions | 40L x 48W x 66H   |
| Packaging           | 40 x 48 Pallet with Plastic Stretch-Wrap or Super Sack  |
| Storage Life        | Storage not recommended. All SiltSoxx Natural products are made to order due to biodegradable properties. |

| Diameter | Stake Size (Nominal) |
|----------|----------------------|
| 5-in     | 1" x 1" x 12"        |
| 8-in     | 2" x 2" x 24"        |
| 12-in    | 2" x 2" x 24"        |



# SILTSOXX®

## Natural+ Compost Filter Sock

### SiltSoxx Natural+ Product Specs:

|   |  |
|---|--|
| Netting Material Type                             | Natural + Pallet Netting<br>All Natural Biodegradable Wood Fiber |
| Netting Degradation                               | Biodegradable  |
| Netting Diameters                                 | 5", 8", 12"  |
| Netting Opening Size                              | 1/8"   |
| Netting Color                                     | Off-White  |
| Fabric Tensile Strength (ASTM D4595) <sup>1</sup> | 249 lbs  |
| Fill Type   | Tested & Certified, Locally Sourced Composted FilterMedia        |
| Functional Longevity <sup>2</sup>                 | up to 18 months  |
| Edging Material                                   | Edging Media Bags Available                                      |
| Staking Recommendation                            | Every 10-ft (stakes not included on precuts)                     |



Netting Sample



Fill Sample

<sup>1</sup>Tensile Strength is based on 12" diameter using ATSM D4595. See Filtrex TechLink #3342 for full tensile strength testing.

<sup>2</sup>Functional longevity ranges are estimates only. Site specific environmental conditions may result in significantly shorter or longer time periods.

### NATURAL+ Item List:

| Item Number  | Diameter | Total Linear Feet per pallet | Unit Length | Units per pallet | Stakes per pallet | Pallet Weight |
|--------------|----------|------------------------------|-------------|------------------|-------------------|---------------|
| PW05-400S2   | 5-in     | 400-ft                       | 200         | 2                | 42                | ~ 1600 lbs    |
| PWN05-400S16 | 5-in     | 400-ft                       | 25-ft       | 16               | 0                 | ~ 1600 lbs    |
| PW08-200S2   | 8-in     | 200-ft                       | 100-ft      | 2                | 22                | ~ 1600 lbs    |
| PWN08-200S20 | 8-in     | 200-ft                       | 10-ft       | 20               | 0                 | ~ 1600 lbs    |
| PWN08-200S10 | 8-in     | 200-ft                       | 20-ft       | 10               | 0                 | ~ 1600 lbs    |
| PW12-110     | 12-in    | 110-ft                       | 110-ft      | 1                | 12                | ~ 1700 lbs    |
| PWN12-100S10 | 12-in    | 100-ft                       | 10-ft       | 10               | 0                 | ~ 1650 lbs    |

### Shipping Specs:

|                     |   |
|---------------------|---|
| Pallets per TL      | 26  |
| Shipping Dimensions | 40L x 48W x 66H   |
| Packaging           | 40 x 48 Pallet with Plastic Stretch-Wrap or Super Sack  |
| Storage Life        | Storage not recommended. All SiltSoxx Natural products are made to order due to biodegradable properties. |

| Diameter | Stake Size (Nominal) |
|----------|----------------------|
| 5-in     | 1" x 1" x 12"        |
| 8-in     | 2" x 2" x 24"        |
| 12-in    | 2" x 2" x 24"        |