



from **\$1,198,698**

NEWELL 346

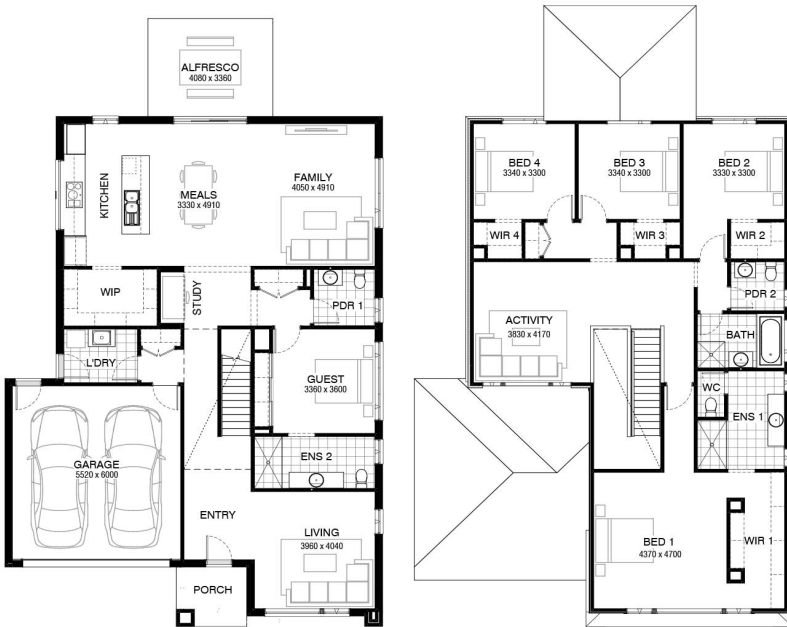
Birchgrove facade

Home size : 37.22 SQ

5 3 2 900 sqm

Lot 55 Wardell street, Bungendore (Elm Grove)

- Land Price \$565 000
- 100% Australian Owned and Operated Since 1983
- Site Costs Included + 7 Star BASIX Compliance
- Floor Coverings + Ducted AC Throughout
- Price Protection Guarantee + 30 Year Structural Guarantee
- 2595mm Ceilings to Ground Floor + 900mm Appliances
- 20mm Stone Benchtops to Kitchen + Colorbond Roof



Ben Silk

0467 206 519

Ben.Silk@burbank.com.au
www.burbank.com.au

*Images are for illustrative purposes only and may include upgrade items, fixtures, finishes available at an additional cost. Burbank does not supply items such as furniture, landscaping, fencing and external lighting. Any prices listed do not include the supply of these items. Packages are subject to availability and to the subject to developer's design review panel and council's final approval. Package price excludes stamp duty on land, legal fees and conveyancing costs. For detailed home pricing, please consult a Burbank sales consultant for further information. Burbank reserves the right to alter the images, descriptions, and/or pricing at any time without notice. All designs are the property of Burbank and must not be used, reproduced, copied or varied, wholly or in part without written permission from an authorised Burbank representative. Copyright. Burbank Australia (NSW) Pty Ltd. ABN 88 610 822 770. Builders Registration numbers; NSW BL 295627C and ACT BL 2016566. - Printed on: 13/05/2026

Burbank